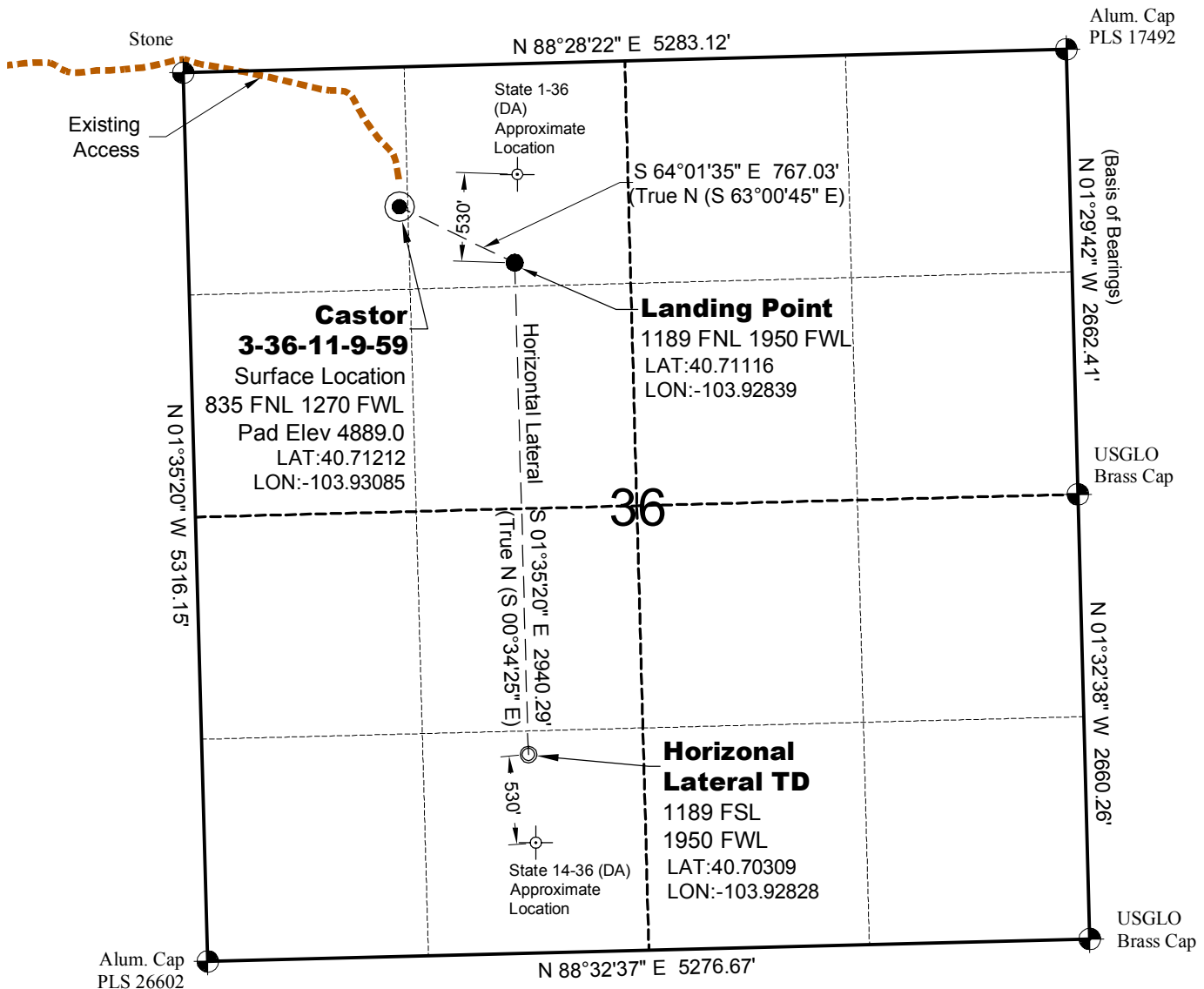


# WELL LOCATION MAP

**CASTOR**  
**36-11-9-59 PAD**

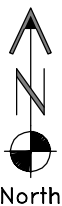


## SURVEYOR'S STATEMENT

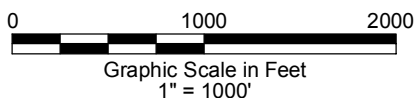
The undersigned hereby states that the well location shown hereon was staked on the ground based on existing monumentation and/or physical evidence found in the field and is correct to the best of my knowledge, information and belief.

## NOTES

- 1.) Horizontal coordinates based on NGS control point "SNOW" and vertical datum based on NGS control point "G 209" with an elevation of 4955.32. NAVD 1988.
  - 2.) All directions, distances, and dimensions shown hereon are based on coordinates from the "Colorado coordinate system of 1983 north zone" (article 52 of title 38, C.R.S.).
  - 3.) All section line dimensions shown hereon are based on field measurements of existing monuments and/or physical evidence found in the field unless otherwise indicated. Refer to land survey plats deposited in Weld County.
  - 4.) Physical features shown hereon are for graphical representation only.
  - 5.) See Form 2A for visible improvements within 400' of wellhead.
  - 6.) Distances to nearest section lines are measured perpendicularly.
  - 7.) This is not a land survey nor land survey plat.
  - 8.) Date of Survey 7/9/12; Date of Drawing 2/28/13. REV 1
- PDOP Reading: 1.7 Instrument Operator: Mark Woodard



North



**CARRIZO NIOBRARA LLC**  
**CASTOR 3-36-11-9-59**

**SL NW1/4 NW1/4 SEC.36 T9N R59W**  
**HL TD SE1/4 SW1/4 SEC.36 T9N R59W**  
**6th PM WELD COUNTY COLORADO**