



Digital Drilling Data
Systems, LLC

GeoLogPlot

(Scale: 2":100' (100'))

Company: Cathedral Energy Services

State: Colorado

Well: Chaves 4B-4H

County: Weld

Field: DJ Basin

Country: USA

Well ID: 05123354740000

Job Number: 125431

Location: SWSE S4-T1N-R6SW

Elev KB: 4929

Operator 1: Jared Nichols / Trevor Plunk

Elev DF: 13

Operator 2: Trevor Plunk

Elev GL: 4916

Comment 1:

Comment 2:

Comment 3:

Comment 4:

Comment 5:

Hole Data			Casing Record		
Size	From	To	Size	From	To
12.25	0	936	9.625	0	921
8.75	936	7360	7	0	7327
6.125	7360	11460	4.5	0	11460

Tool Run Data	Run #1	Run #2	Run #3	Run #4	Run #5
Tool S/N		1119	1119	1119	
Cal Factor		4.028	2.98	2.98	
Gamma Offset		38	34		
Start Depth		946	7360	9827	
Start Date		7/3/12	7/9/12	7/12/12	
Start Time		10:00	03:00	01:30	
End Depth		7360	9827	11460	
End Date		7/7/12	7/12/12	7/14/12	
End Time		19:00	00:00	21:00	

#2 MD:5086.0 TVD:5052.1 I:2.9 A:112.6 VS:-213.8

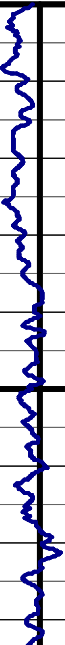
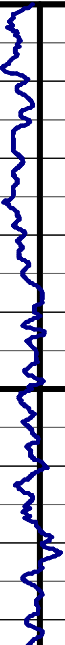
Depth
2":100' (100')

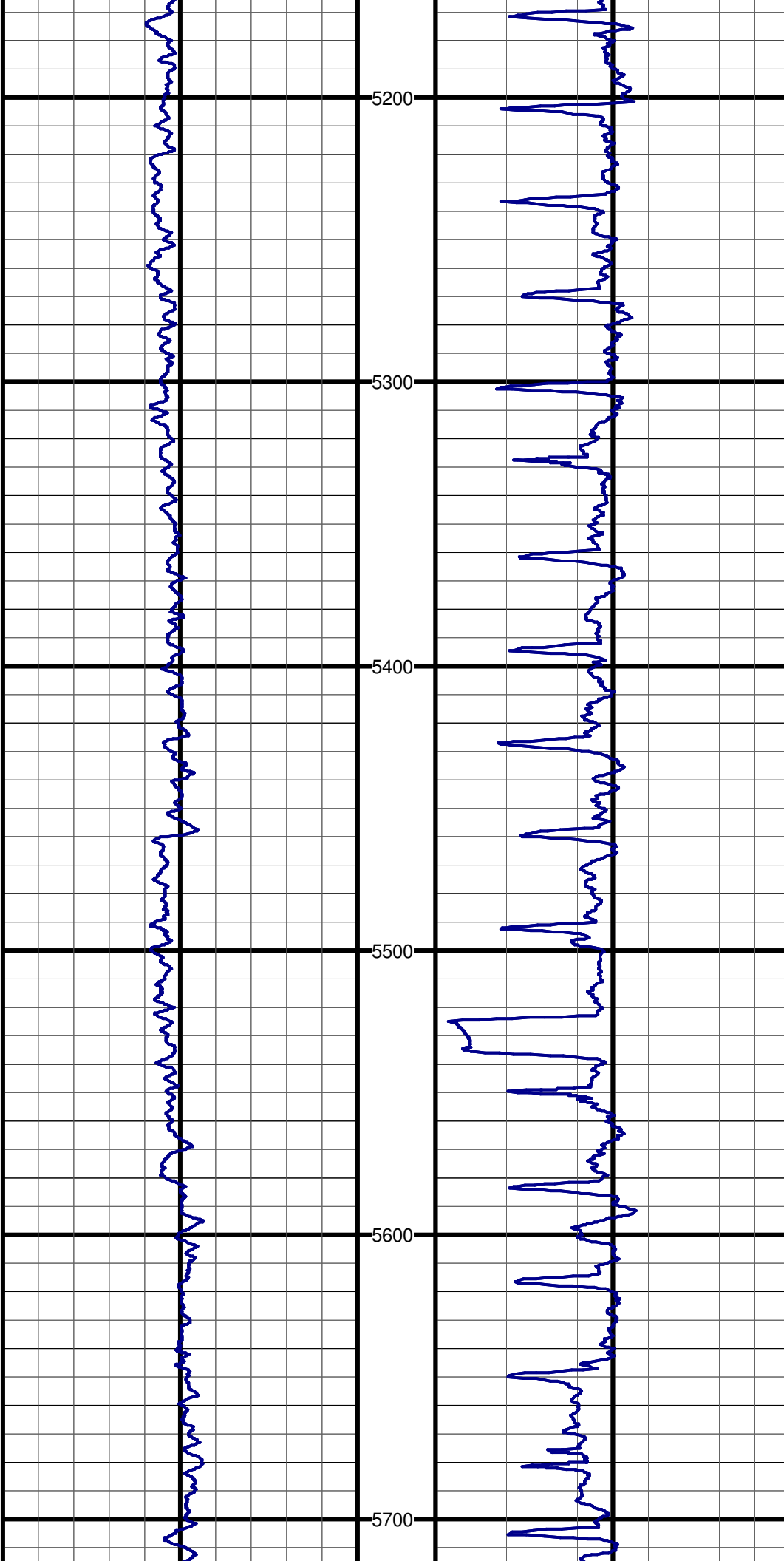
ROP (MD) Track: 1
Ft/Hr

0 400 800 1200
400 800

Gamma API (MD) Track: 1
API

0 200 400 600
200 400





#3 MD:5181.0 TVD:5147.1 I:2.2 A:114.9 VS:-215.5

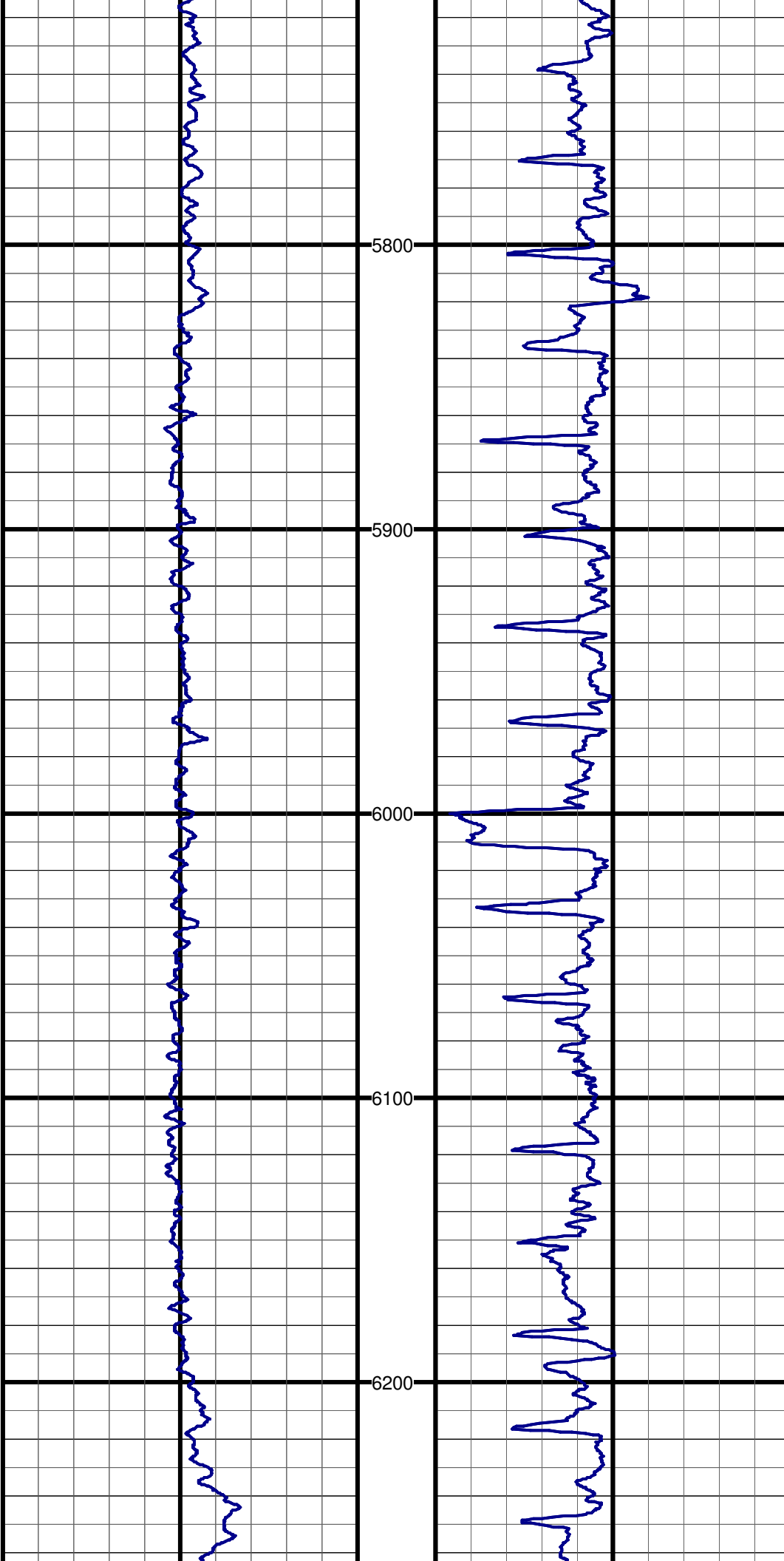
#4 MD:5276.0 TVD:5242.0 I:2.1 A:113.8 VS:-217.0

#5 MD:5371.0 TVD:5336.9 I:2.0 A:106.8 VS:-218.1

#6 MD:5466.0 TVD:5431.9 I:1.8 A:117.6 VS:-219.3

#7 MD:5561.0 TVD:5526.9 I:0.6 A:38.3 VS:-219.6

#8 MD:5657.0 TVD:5622.8 I:0.5 A:39.8 VS:-218.9



#9 MD:5752.0 TVD:5717.8 I:0.4 A:75.3 VS:-218.5

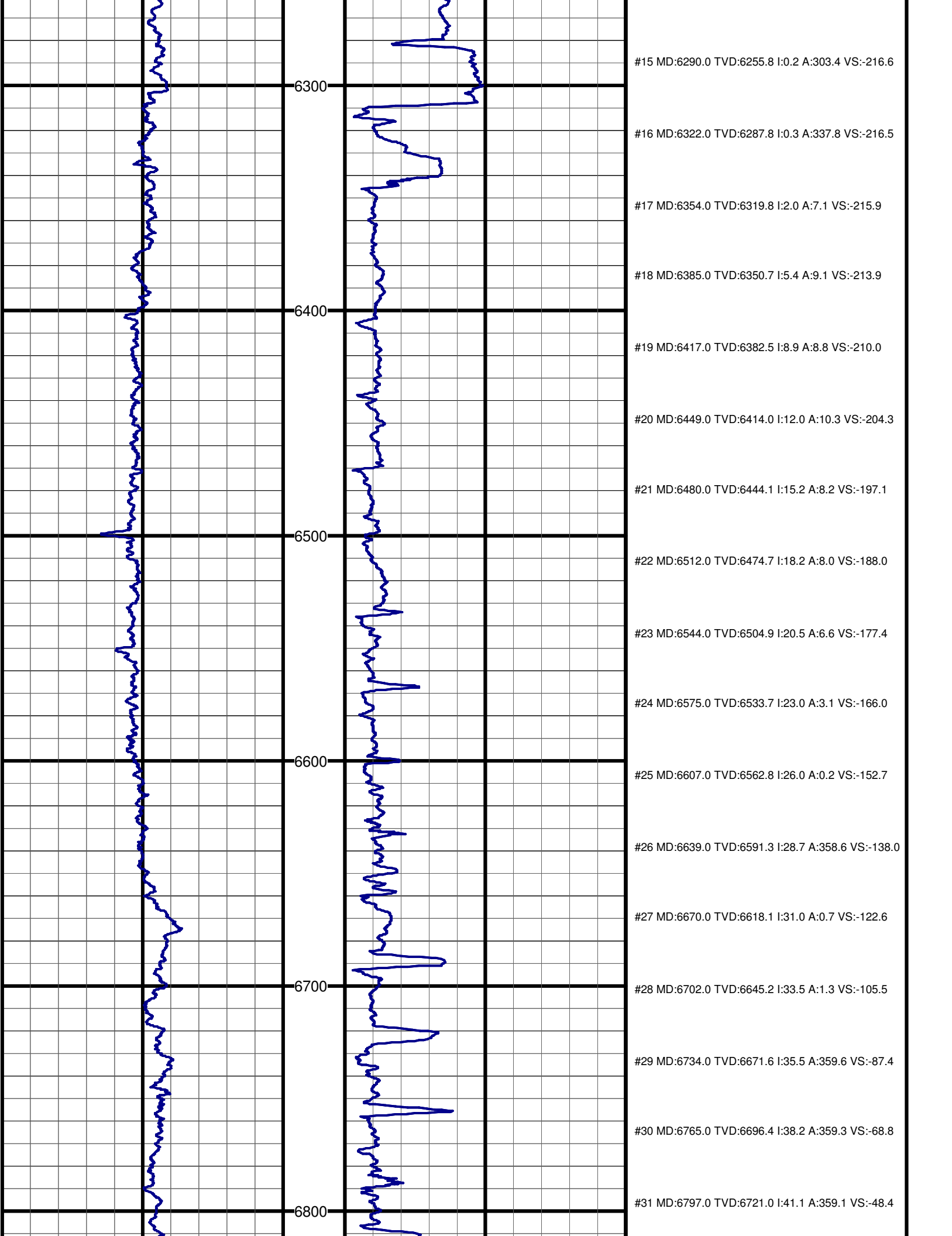
#10 MD:5847.0 TVD:5812.8 I:0.9 A:31.8 VS:-217.8

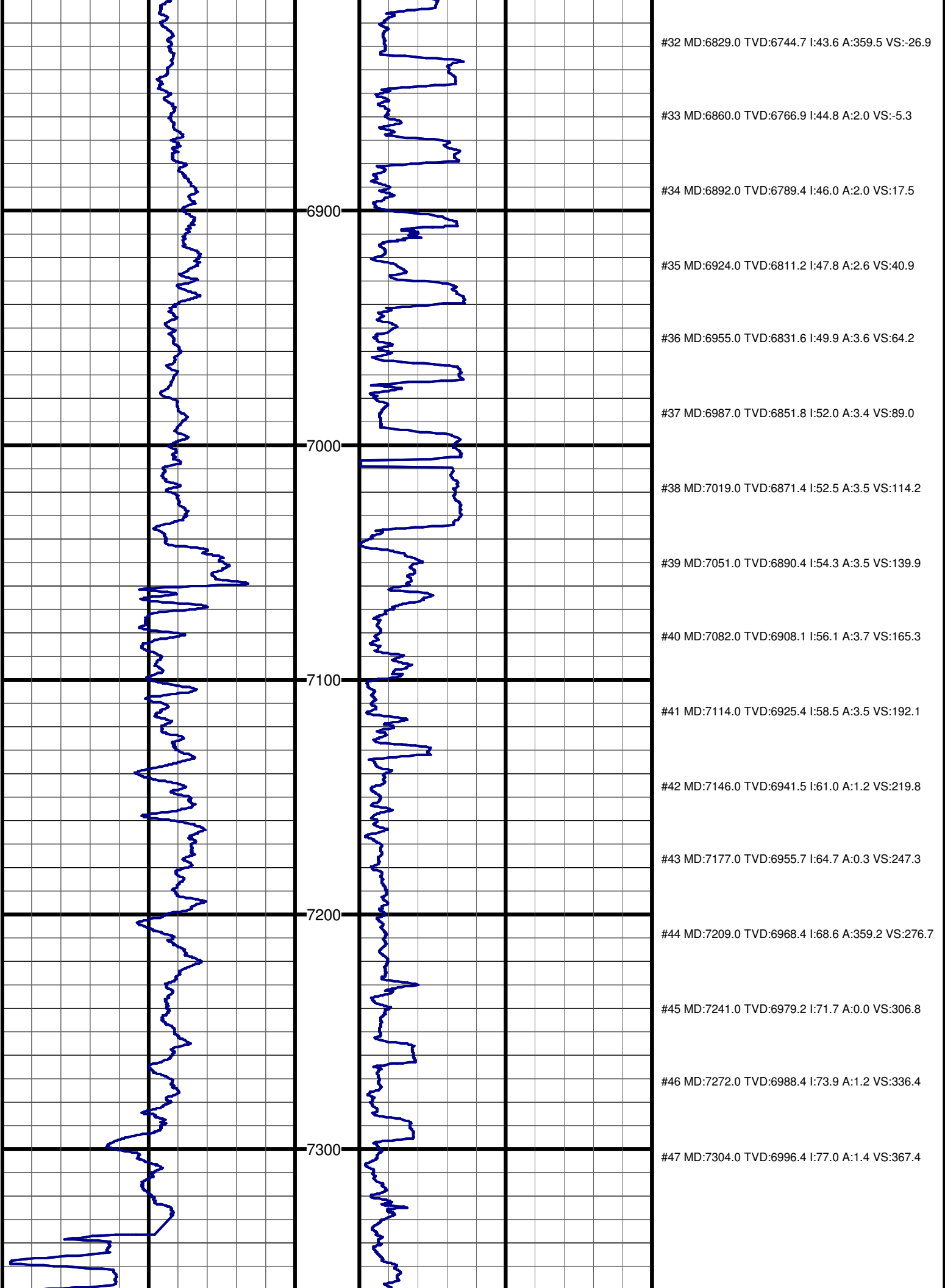
#11 MD:5942.0 TVD:5907.8 I:0.8 A:46.2 VS:-216.7

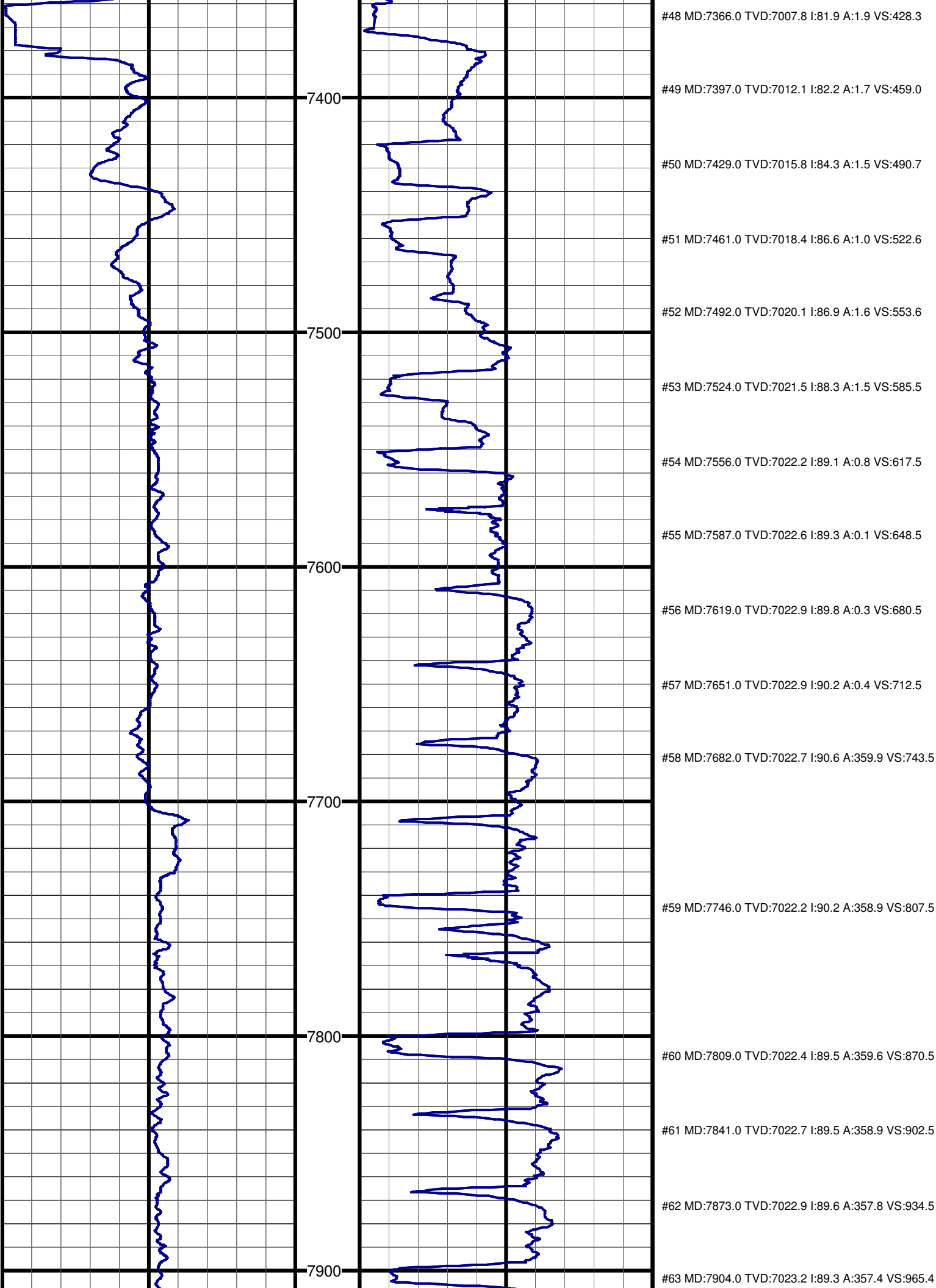
#12 MD:6037.0 TVD:6002.8 I:0.6 A:255.0 VS:-216.3

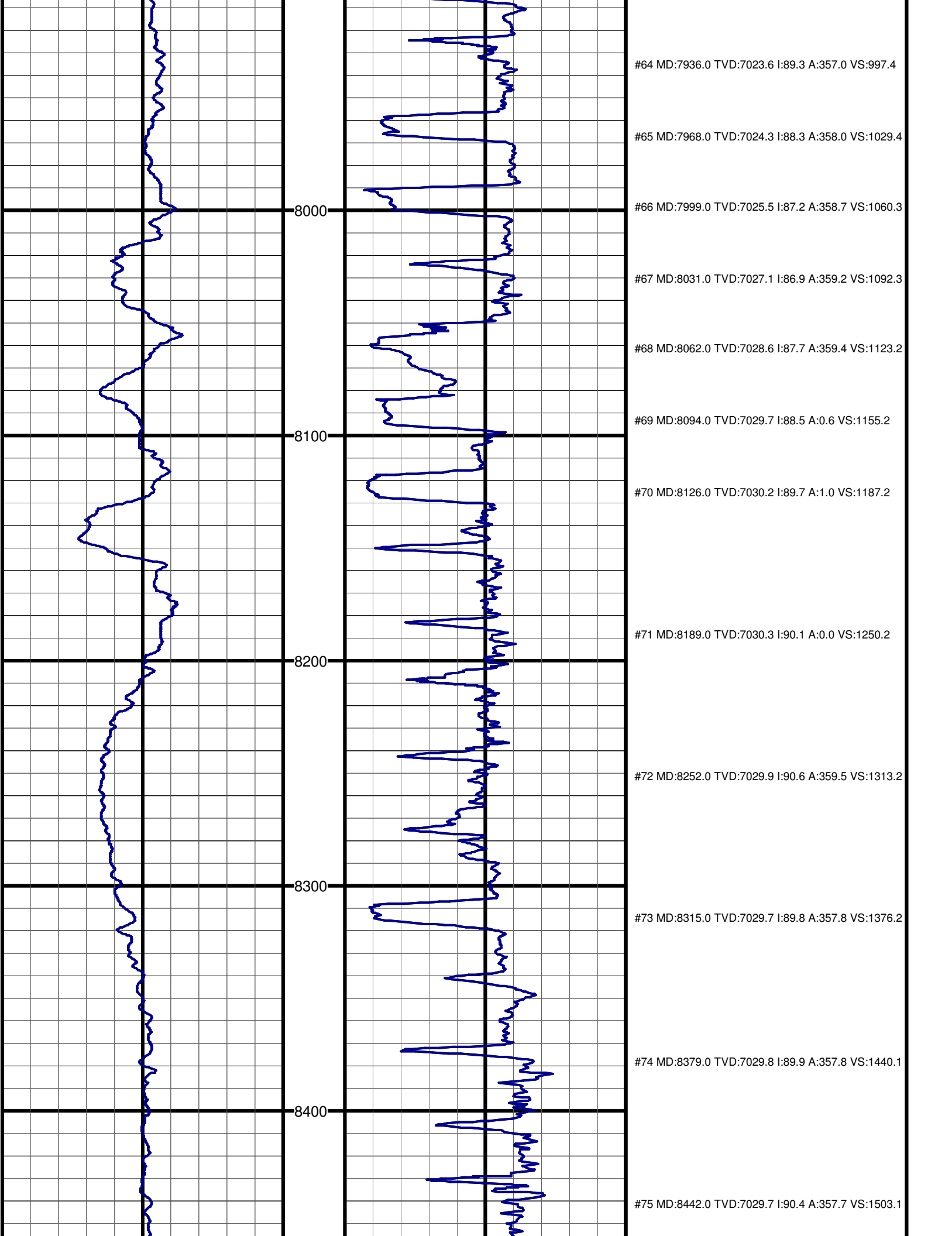
#13 MD:6132.0 TVD:6097.8 I:0.3 A:245.6 VS:-216.6

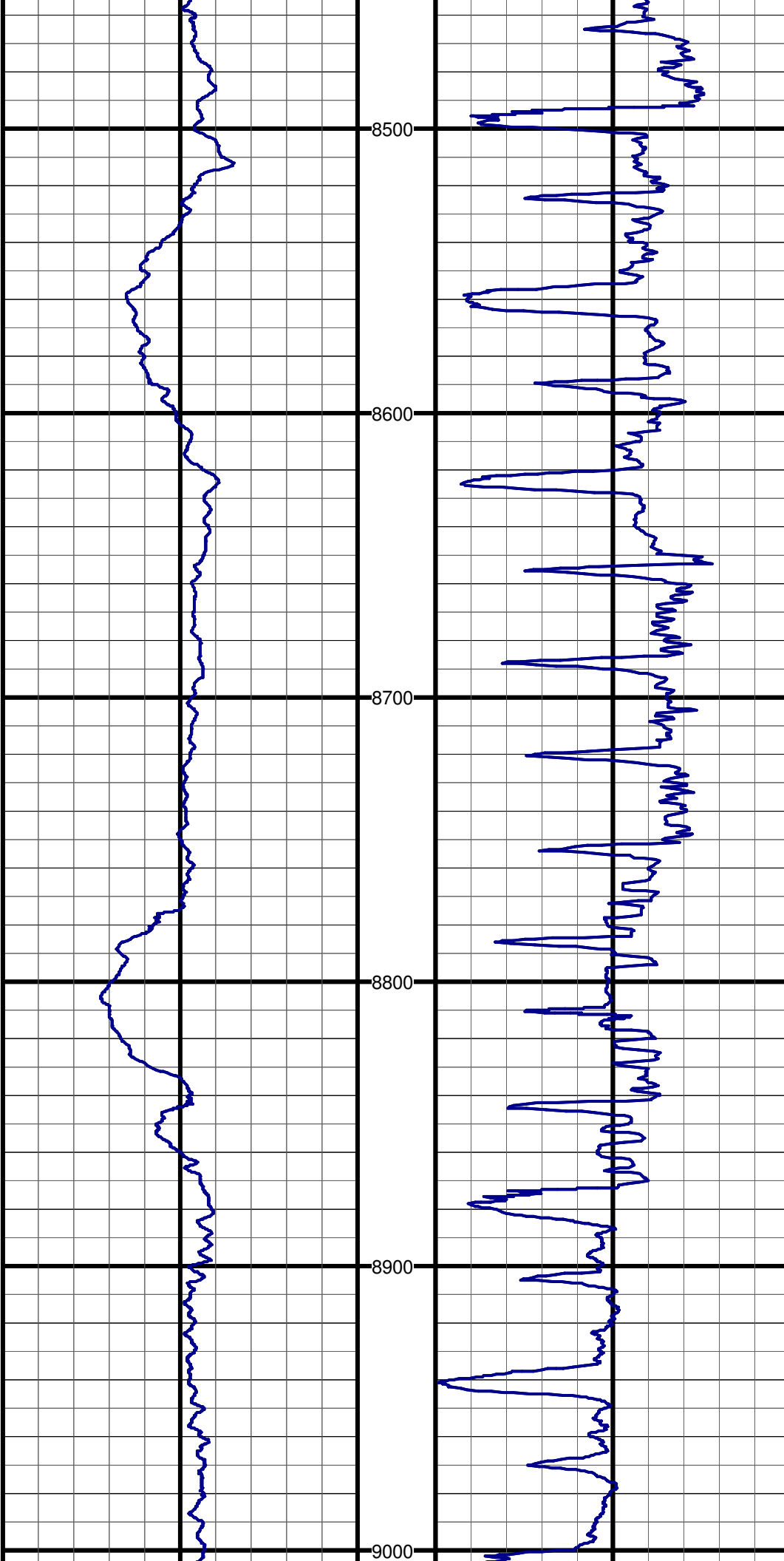
#14 MD:6227.0 TVD:6192.8 I:0.4 A:269.0 VS:-216.7











#76 MD:8505.0 TVD:7029.2 I:90.5 A:358.0 VS:1566.0

#77 MD:8569.0 TVD:7028.6 I:90.5 A:359.4 VS:1630.0

#78 MD:8632.0 TVD:7028.8 I:89.1 A:358.0 VS:1693.0

#79 MD:8695.0 TVD:7029.6 I:89.5 A:357.3 VS:1755.9

#80 MD:8759.0 TVD:7030.0 I:89.8 A:358.1 VS:1819.9

#81 MD:8822.0 TVD:7030.0 I:90.2 A:357.4 VS:1882.8

#82 MD:8886.0 TVD:7029.8 I:90.1 A:357.9 VS:1946.8

#83 MD:8949.0 TVD:7029.7 I:90.2 A:357.3 VS:2009.7

