

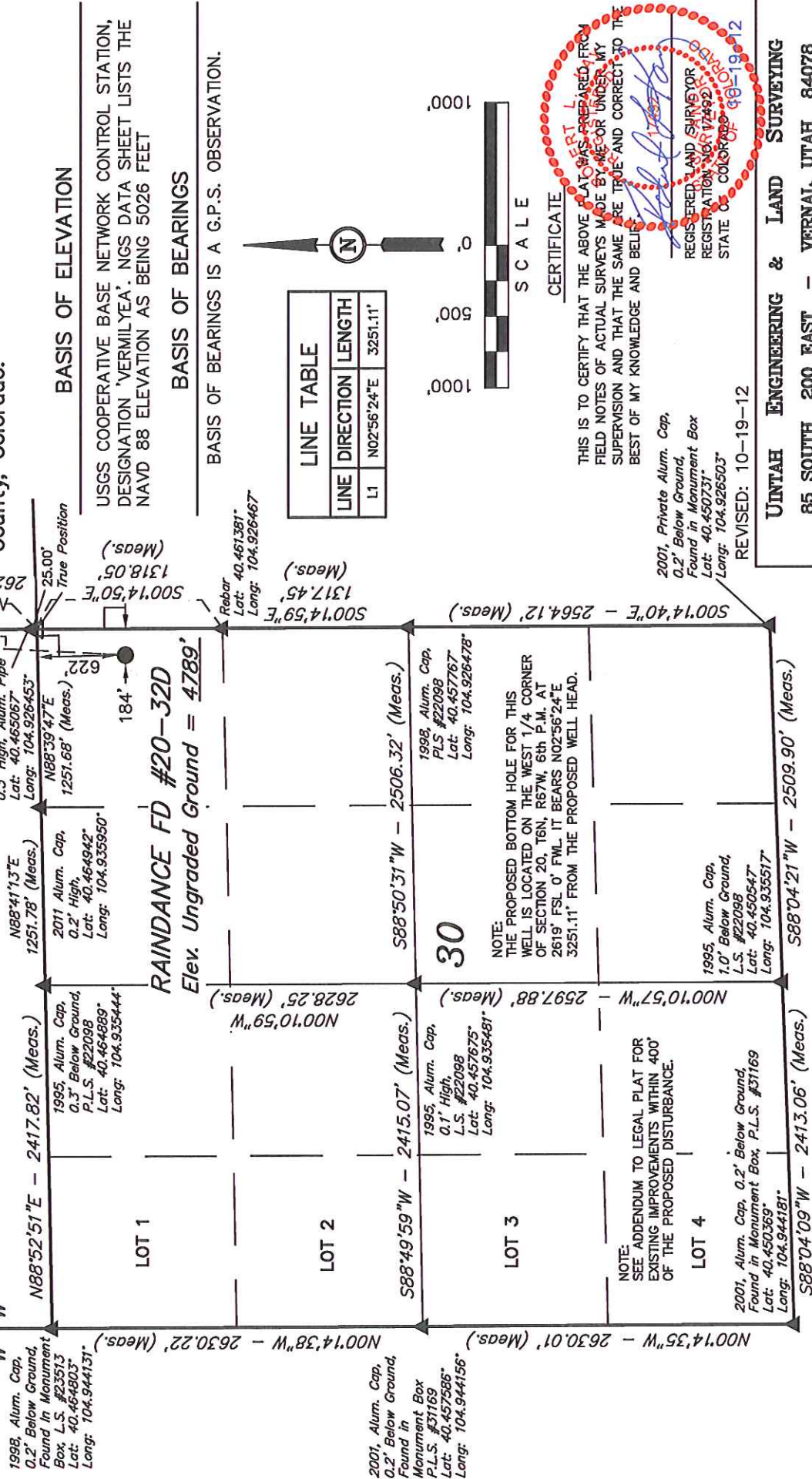
T6N, R67W, 6th P.M.

W 1/4 Cor. Sec. 20

1998, Alum. Cap. 0.4' Below Ground,
Found in Monument Box at Rd.
Intersection
Lat: 40.472189°
Long: 104.926436°

GREAT WESTERN OIL & GAS COMPANY

Well location, RAINDANCE FD #20-32D (SURFACE LOCATION), located as shown in the NE 1/4 NE 1/4 of Section 30, T6N, R67W, 6th P.M., Weld County, Colorado.



LEGEND:

- 90° SYMBOL
- PROPOSED WELL HEAD.
- SECTION CORNERS LOCATED.
- SECTION CORNERS RE-ESTABLISHED (Not Set on Ground.)

PDOP = 2.0

NAD 83 (SURFACE LOCATION)	
LATITUDE = 40°27'47.82"	(40.463283)
LONGITUDE = 104°55'37.63"	(104.927119)
NAD 27 (SURFACE LOCATION)	
LATITUDE = 40°27'47.88"	(40.463300)
LONGITUDE = 104°55'35.72"	(104.926589)

SCALE	1" = 1000'	DATE SURVEYED:	09-28-12	DATE DRAWN:	10-02-12
PARTY	L.S. G.W. J.W.	REFERENCES	G.L.O. PLAT		
WEATHER	WARM	FILE	GREAT WESTERN OIL & GAS COMPANY		

UINTAH ENGINEERING & LAND SURVEYING
85 SOUTH 200 EAST - VERNAL, UTAH 84078
(435) 789-1017

T6N, R67W, 6th P.M.

GREAT WESTERN OIL & GAS COMPANY

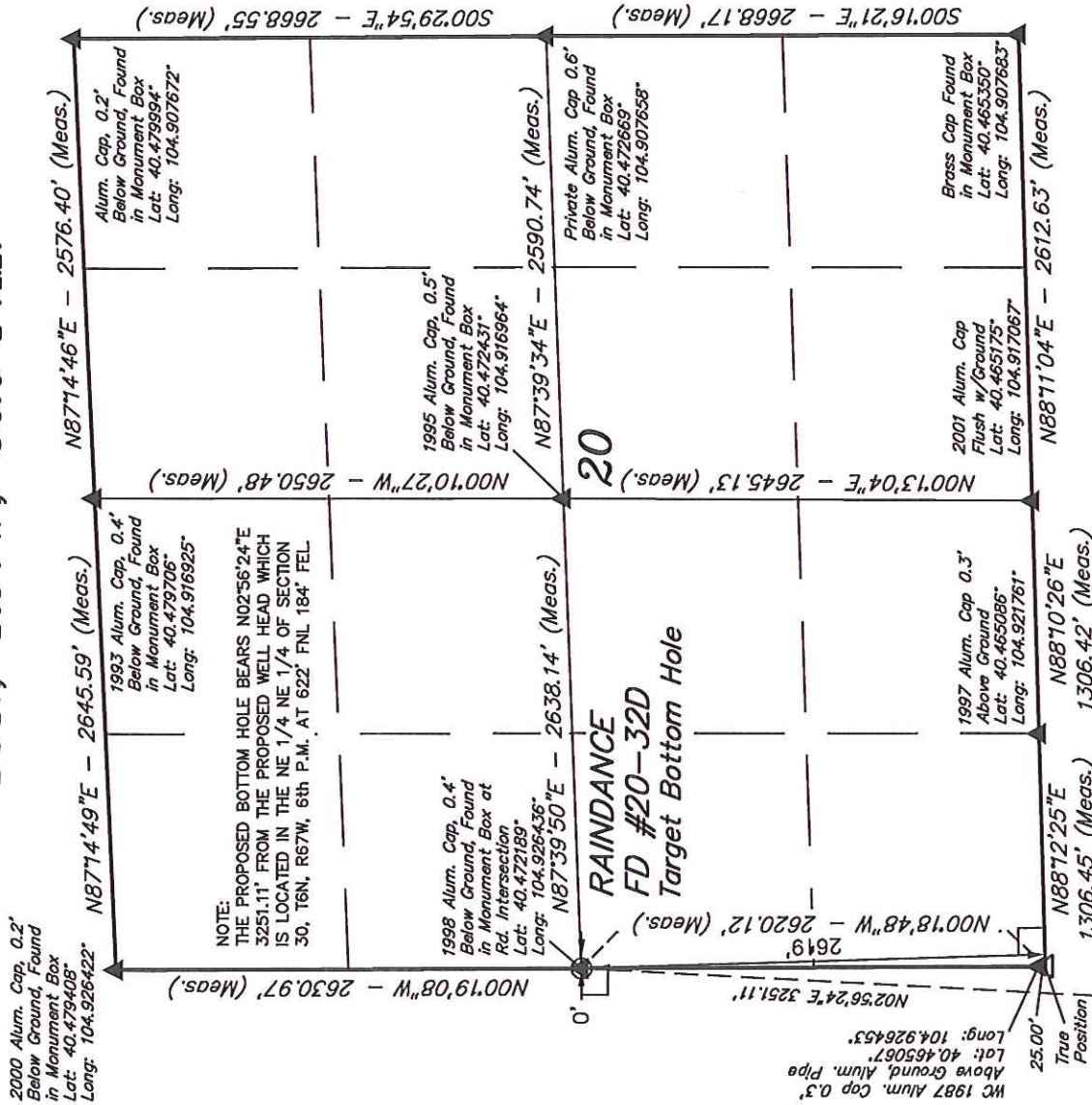
Well location, RAINDANCE FD #20-32D (TARGET BOTTOM HOLE), located as shown on the WEST 1/4 Corner of Section 20, T6N, R67W, 6th P.M., Weld County, Colorado.

BASIS OF ELEVATION

USGS COOPERATIVE BASE NETWORK CONTROL STATION, DESIGNATION 'VERMILYEA'. NGS DATA SHEET LISTS THE NAVD 88 ELEVATION AS BEING 5026 FEET

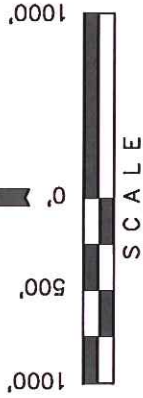
BASIS OF BEARINGS

BASIS OF BEARINGS IS A G.P.S. OBSERVATION.



- LEGEND:**
- 90° SYMBOL
 - PROPOSED WELL HEAD.
 - SECTION CORNERS LOCATED.
 - SECTION CORNERS RE-ESTABLISHED (Not Set on Ground.)

Surface Location



CERTIFICATE
THIS IS TO CERTIFY THAT THE ABOVE PLAT WAS PREPARED FROM FIELD NOTES OF ACTUAL SURVEYS MADE BY ME OR UNDER MY SUPERVISION AND THAT THE SAME ARE TRUE AND CORRECT TO THE BEST OF MY KNOWLEDGE AND BELIEF.
REGISTERED LAND SURVEYOR
REGISTRATION NO. 17492
STATE OF COLORADO 98-19-12

REVISED: 10-19-12

UNTAH ENGINEERING & LAND SURVEYING	
85 SOUTH 200 EAST - VERNAL, UTAH 84078	
(435) 789-1017	
SCALE 1" = 1000'	DATE SURVEYED: 09-28-12
PARTY L.S. G.W. J.W.	DATE DRAWN: 10-02-12
WEATHER WARM	REFERENCES G.L.O. PLAT
FILE GREAT WESTERN OIL & GAS COMPANY	

NAD 83 (TARGET BOTTOM HOLE)	
LATITUDE = 40°28'19.88"	(40.472189)
LONGITUDE = 104°55'35.17"	(104.926436)
NAD 27 (TARGET BOTTOM HOLE)	
LATITUDE = 40°28'19.94"	(40.472206)
LONGITUDE = 104°55'33.26"	(104.925906)