

WELLBORE DIAGRAM

Bonanza Creek Energy
Pronghorn 41-44-18HNB

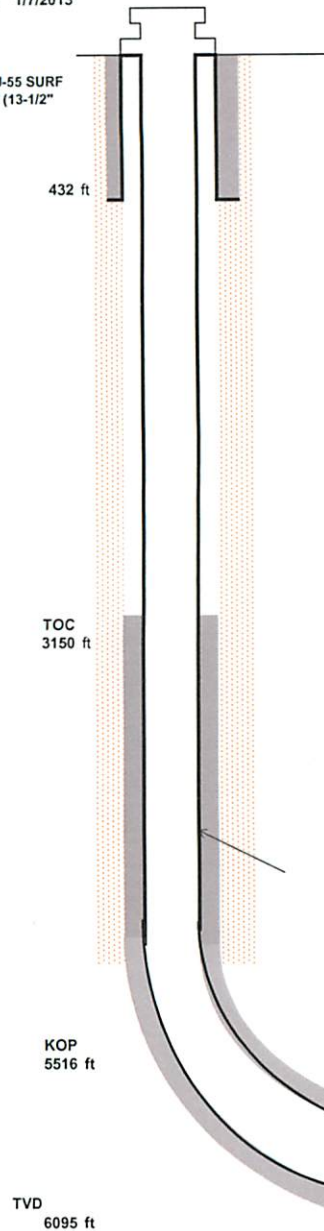
SHL: 200' FNL & 460' FEL NENE
Sec 18 T5N R61W
BHL: 460' FSL & 576' FEL
Sec 18 T5N R61W
Weld County, CO
05-123-35696

KB Elev 4602' ft
GL Elev 4587' ft
KB to GL 15' ft

Updated Date
2/6/2013

Spud Date: 1/7/2013

9-5/8" 36# J-55 SURF
CSG @ 432' (13-1/2"
HOLE)



Casing, Cement, Tubing Information

Surface: 9 5/8" , 36#, J-55 Surface Casing @ 417' Cemented W/ 360 sks to Surface (13 1/2" hole)

Intermediate: 7", 26#, P-110, LTC Intermediate Casing @ 6569' Cemented W/ 733 sks; TOC @ 3154 CBL (8 3/4" hole)

Liner: 4 1/2", 11.6#, N-80, LTC Liner @ 10,711' ,Top @ 6478'

Tubing: 179 jts. 2 7/8", 6.5#, 8RD, EUE @ 5781.21 KB

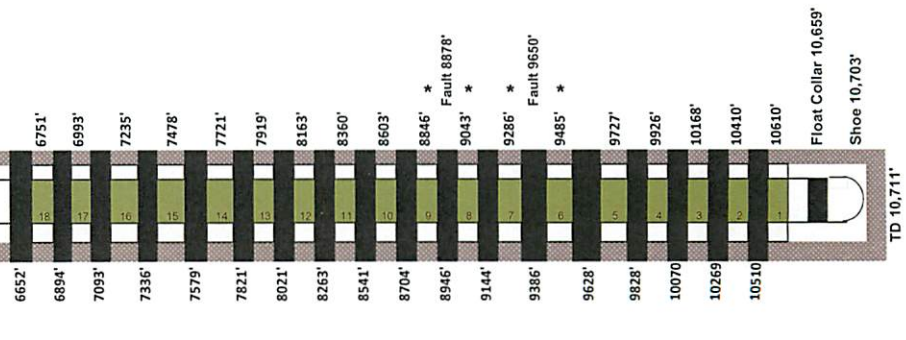
Other: SN @ 5758.3', ON/OFF Tool @ 5829', Packer @ 5836.5', Mule Shoe @ 5837.8'

7" 26# HCP-110
6567 ft

TOL= 6479'

Sleeve Top

Packer Tops



Stage	Sleeve Top (Ft)	Ball Size (Bbls)	Rounddown Flush (Bbls)	-40 Bbls Flush - Slowdown (Bbls)
1	10,610	1,625	311.69	271
2	10,410	1,750	308.59	268
3	10,168	1,875	304.82	264
4	9,926	2,000	301.06	261
5	9,727	2,125	297.97	257
6	9,485	2,250	294.21	254
7	9,286	2,375	291.12	251
8	9,043	2,500	287.34	247
9	8,846	2,625	284.28	244
10	8,603	2,750	280.50	240
11	8,360	2,875	276.73	236
12	8,163	3,000	273.67	233
13	7,919	3,125	269.88	229
14	7,721	3,250	266.80	226
15	7,478	3,375	263.02	223
16	7,235	3,500	259.25	219
17	6,993	3,625	255.49	215
18	6,751	3,750	251.72	211