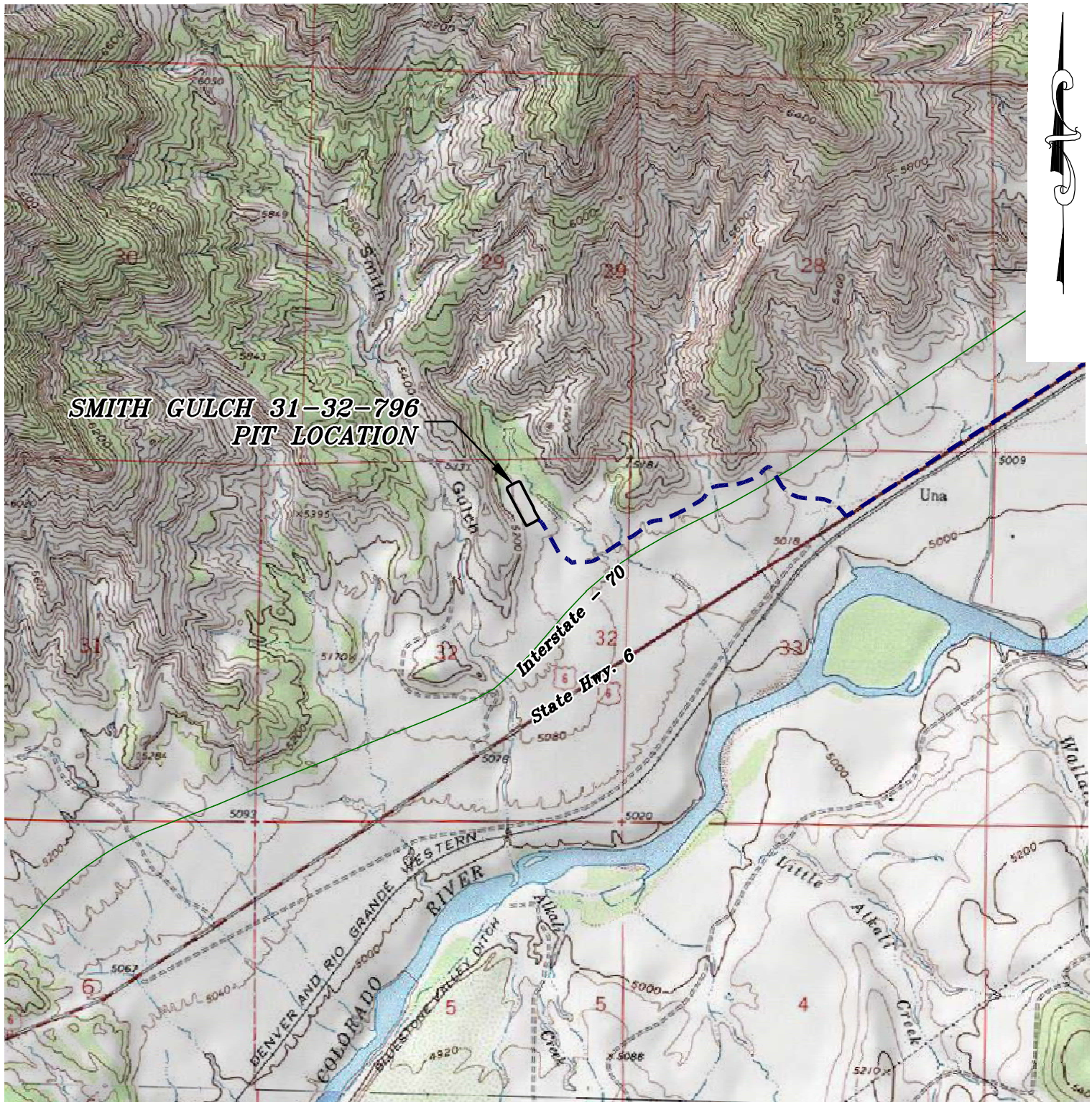


Topo Map with Pit Location

Section 32
T. 7 S., R 96 W.



1000 0 2000
GRAPHIC SCALE IN FEET
1 INCH = 2000 FEET

ACCESS DESCRIPTION:

FROM INTERSTATE 70 EXIT 72 ROUND-ABOUT INTERSECTION SOUTHWEST OF THE TOWN OF PARACHUTE, PROCEED IN A SOUTHWESTERLY DIRECTION ALONG STATE HIGHWAY 6 & 24, ± 3.0 MILES TO AN INTERSECTION WITH A DIRT/GRAVEL ROAD, PROCEED RIGHT IN A NORTHERLY DIRECTION TO THE SMITH GULCH 31-32-798 PIT LOCATION, AS SHOWN HEREON.

136 East Third Street
Rifle, Colorado 81650
Ph. (970) 625-2720
Fax (970) 625-2773

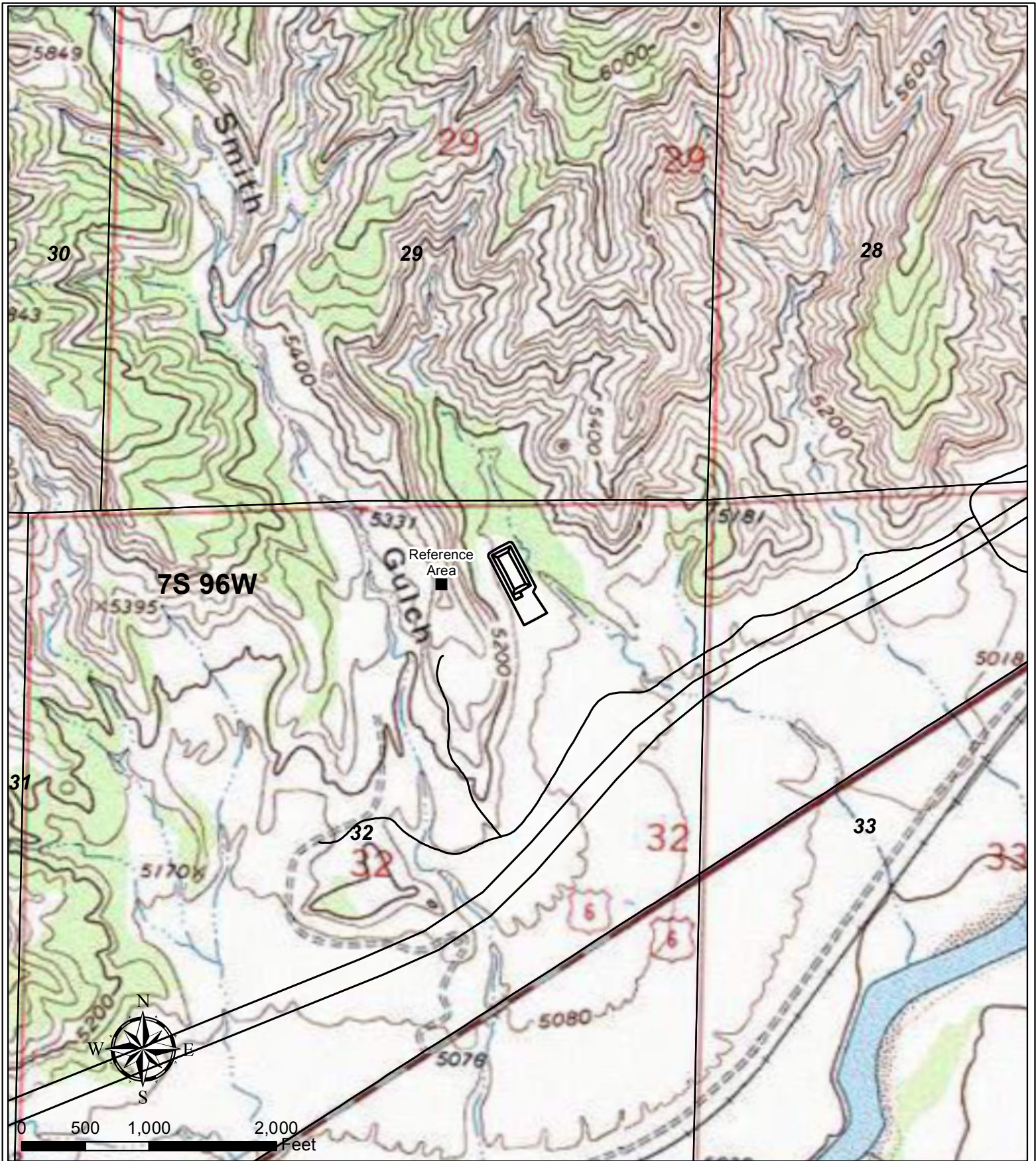


BOOKCLIFF
Survey Services, Inc.

SCALE: 1" = 2000'
DATE: 2/26/13
PLAT: 3 of 4
PROJECT: Valley
DFT: cws

Construction Plan Prepared for:
WPXENERGY WPX Energy Rocky Mountain, LLC

*Smith Gulch 31-32-796 - Plat 3
ACCESS ROAD & TOPO MAP*



Legend

— Pad

WPX Energy Rocky Mountain, LLC

Plat 5D

Smith Gulch 31-32-796
Reference Area Map

