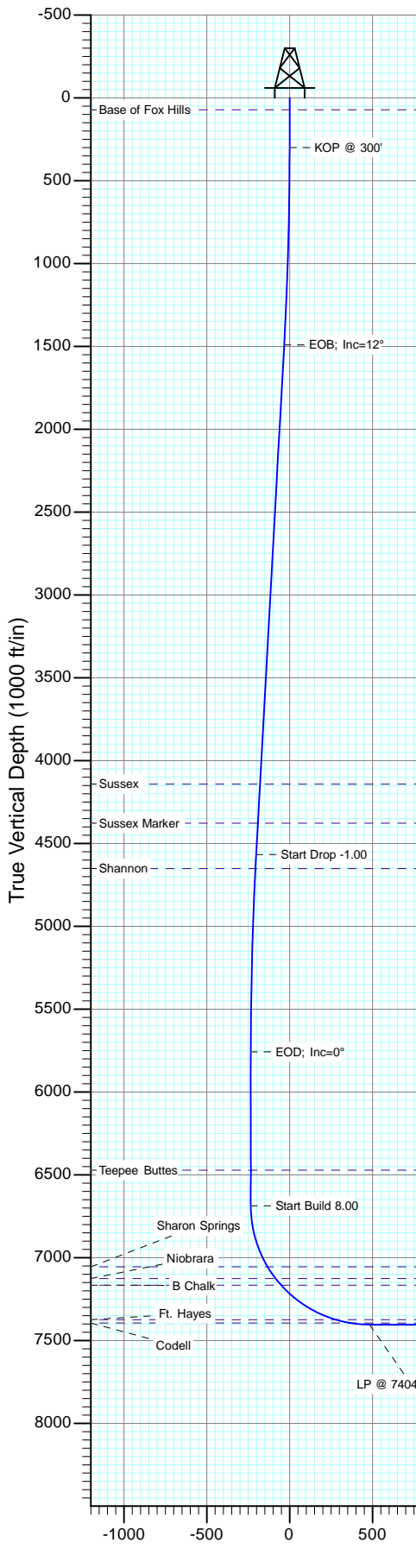
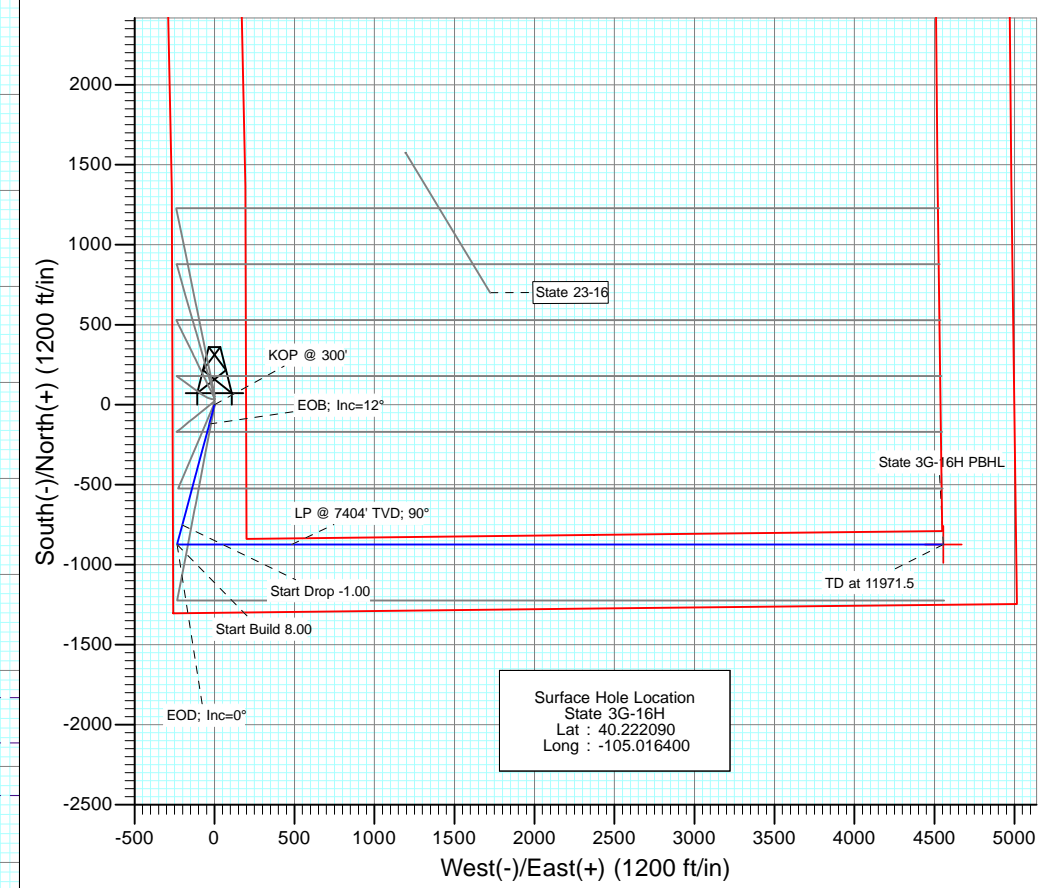




Project: DJ Wattenberg
 Site: S16-T3N-R68W (State)
 Well: State 3G-16H
 Wellbore: Hz
 Design: Plan #1



SECTION DETAILS										
Sec	MD	Inc	Azi	TVD	+N/-S	+E/-W	Dleg	TFace	VSec	Target
1	0.0	0.00	0.00	0.0	0.0	0.0	0.00	0.00	0.0	
2	300.0	0.00	0.00	300.0	0.0	0.0	0.00	0.00	0.0	
3	1500.0	12.00	195.00	1491.2	-120.9	-32.4	1.00	195.00	-32.4	
4	4645.0	12.00	195.00	4567.5	-752.5	-201.6	0.00	0.00	-201.6	
5	5845.0	0.00	0.00	5758.8	-873.5	-234.0	1.00	180.00	-234.0	
6	6774.0	0.00	0.00	6687.8	-873.5	-234.0	0.00	0.00	-234.0	
7	7899.0	90.00	90.00	7404.0	-873.5	482.1	8.00	90.00	482.1	
8	11971.5	90.00	90.00	7404.0	-873.9	4554.6	0.00	0.00	4554.6	State 3G-16H PBHL



Surface Hole Location
 State 3G-16H
 Lat : 40.222090
 Long : -105.016400

DESIGN TARGET DETAILS						
Name	+N/-S	+E/-W	Northing	Easting	Latitude	Longitude
State 3G-16H PBHL	-873.9	4554.6	1323271.36	3139605.96	40.219690	-105.000090

M Azimuths to True North
 Magnetic North: 8.76°
 Magnetic Field
 Strength: 52835.7snT
 Dip Angle: 66.81°
 Date: 2/5/2013
 Model: IGRF2010

FORMATION TOP DETAILS		
TVDPath	MDPath	Formation
72.0	72.0	Base of Fox Hills
4142.0	4210.0	Sussex
4378.0	4451.2	Sussex Marker
4652.0	4731.2	Shannon
6472.0	6558.2	Teepee Buttes
7055.0	7159.6	Sharon Springs
7126.0	7245.6	Niobrara
7166.0	7297.6	B Chalk
7374.0	7691.0	Ft. Hayes
7394.0	7779.2	Codell

Plan #1
 State 3G-16H
 13xxx; LR
 WELL @ 5072.0ft (Original Well Elev)
 Ground Elevation @ 5059.0
 North American Datum 1983
 Well State 3G-16H, True North

Vertical Section at 90.00° (1000 ft/in)

Planning Report

Database:	USA EDM 5000 Multi Users DB	Local Co-ordinate Reference:	Well State 3G-16H
Company:	EnCana Oil & Gas (USA) Inc	TVD Reference:	WELL @ 5072.0ft (Original Well Elev)
Project:	DJ Wattenberg	MD Reference:	WELL @ 5072.0ft (Original Well Elev)
Site:	S16-T3N-R68W (State)	North Reference:	True
Well:	State 3G-16H	Survey Calculation Method:	Minimum Curvature
Wellbore:	Hz		
Design:	Plan #1		

Project DJ Wattenberg			
Map System:	US State Plane 1983	System Datum:	Mean Sea Level
Geo Datum:	North American Datum 1983		
Map Zone:	Colorado Northern Zone		

Site S16-T3N-R68W (State)					
Site Position:		Northing:	1,326,575.12 ft	Latitude:	40.228760
From:	Lat/Long	Easting:	3,139,542.66 ft	Longitude:	-105.000250
Position Uncertainty:	0.0 ft	Slot Radius:	13.200 in	Grid Convergence:	0.32 °

Well State 3G-16H						
Well Position	+N/-S	0.0 ft	Northing:	1,324,120.36 ft	Latitude:	40.222090
	+E/-W	0.0 ft	Easting:	3,135,046.66 ft	Longitude:	-105.016400
Position Uncertainty		0.0 ft	Wellhead Elevation:	ft	Ground Level:	5,059.0 ft

Wellbore Hz					
Magnetics	Model Name	Sample Date	Declination	Dip Angle	Field Strength
			(°)	(°)	(nT)
	IGRF2010	2/5/2013	8.76	66.81	52,836

Design Plan #1				
Audit Notes:				
Version:	Phase:	PLAN	Tie On Depth:	0.0
Vertical Section:	Depth From (TVD)	+N/-S	+E/-W	Direction
	(ft)	(ft)	(ft)	(°)
	0.0	0.0	0.0	90.00

Plan Sections										
Measured Depth (ft)	Inclination (°)	Azimuth (°)	Vertical Depth (ft)	+N/-S (ft)	+E/-W (ft)	Dogleg Rate (°/100ft)	Build Rate (°/100ft)	Turn Rate (°/100ft)	TFO (°)	Target
0.0	0.00	0.00	0.0	0.0	0.0	0.00	0.00	0.00	0.00	
300.0	0.00	0.00	300.0	0.0	0.0	0.00	0.00	0.00	0.00	
1,500.0	12.00	195.00	1,491.2	-120.9	-32.4	1.00	1.00	0.00	195.00	
4,645.0	12.00	195.00	4,567.5	-752.5	-201.6	0.00	0.00	0.00	0.00	
5,845.0	0.00	0.00	5,758.8	-873.5	-234.0	1.00	-1.00	0.00	180.00	
6,774.0	0.00	0.00	6,687.8	-873.5	-234.0	0.00	0.00	0.00	0.00	
7,899.0	90.00	90.00	7,404.0	-873.5	482.1	8.00	8.00	0.00	90.00	
11,971.5	90.00	90.00	7,404.0	-873.9	4,554.6	0.00	0.00	0.00	0.00	State 3G-16H PBHL

Planning Report

Database:	USA EDM 5000 Multi Users DB	Local Co-ordinate Reference:	Well State 3G-16H
Company:	EnCana Oil & Gas (USA) Inc	TVD Reference:	WELL @ 5072.0ft (Original Well Elev)
Project:	DJ Wattenberg	MD Reference:	WELL @ 5072.0ft (Original Well Elev)
Site:	S16-T3N-R68W (State)	North Reference:	True
Well:	State 3G-16H	Survey Calculation Method:	Minimum Curvature
Wellbore:	Hz		
Design:	Plan #1		

Planned Survey									
Measured Depth (ft)	Inclination (°)	Azimuth (°)	Vertical Depth (ft)	+N/-S (ft)	+E/-W (ft)	Vertical Section (ft)	Dogleg Rate (°/100ft)	Build Rate (°/100ft)	Comments / Formations
0.0	0.00	0.00	0.0	0.0	0.0	0.0	0.00	0.00	
72.0	0.00	0.00	72.0	0.0	0.0	0.0	0.00	0.00	Base of Fox Hills
100.0	0.00	0.00	100.0	0.0	0.0	0.0	0.00	0.00	
200.0	0.00	0.00	200.0	0.0	0.0	0.0	0.00	0.00	
300.0	0.00	0.00	300.0	0.0	0.0	0.0	0.00	0.00	KOP @ 300'
400.0	1.00	195.00	400.0	-0.8	-0.2	-0.2	1.00	1.00	
500.0	2.00	195.00	500.0	-3.4	-0.9	-0.9	1.00	1.00	
600.0	3.00	195.00	599.9	-7.6	-2.0	-2.0	1.00	1.00	
700.0	4.00	195.00	699.7	-13.5	-3.6	-3.6	1.00	1.00	
800.0	5.00	195.00	799.4	-21.1	-5.6	-5.6	1.00	1.00	
900.0	6.00	195.00	898.9	-30.3	-8.1	-8.1	1.00	1.00	
1,000.0	7.00	195.00	998.3	-41.3	-11.1	-11.1	1.00	1.00	
1,100.0	8.00	195.00	1,097.4	-53.9	-14.4	-14.4	1.00	1.00	
1,200.0	9.00	195.00	1,196.3	-68.1	-18.3	-18.3	1.00	1.00	
1,300.0	10.00	195.00	1,294.9	-84.1	-22.5	-22.5	1.00	1.00	
1,400.0	11.00	195.00	1,393.3	-101.7	-27.2	-27.2	1.00	1.00	
1,500.0	12.00	195.00	1,491.2	-120.9	-32.4	-32.4	1.00	1.00	EOB; Inc=12°
1,600.0	12.00	195.00	1,589.1	-141.0	-37.8	-37.8	0.00	0.00	
1,700.0	12.00	195.00	1,686.9	-161.1	-43.2	-43.2	0.00	0.00	
1,800.0	12.00	195.00	1,784.7	-181.2	-48.5	-48.5	0.00	0.00	
1,900.0	12.00	195.00	1,882.5	-201.3	-53.9	-53.9	0.00	0.00	
2,000.0	12.00	195.00	1,980.3	-221.4	-59.3	-59.3	0.00	0.00	
2,100.0	12.00	195.00	2,078.1	-241.4	-64.7	-64.7	0.00	0.00	
2,200.0	12.00	195.00	2,175.9	-261.5	-70.1	-70.1	0.00	0.00	
2,300.0	12.00	195.00	2,273.8	-281.6	-75.5	-75.5	0.00	0.00	
2,400.0	12.00	195.00	2,371.6	-301.7	-80.8	-80.8	0.00	0.00	
2,500.0	12.00	195.00	2,469.4	-321.8	-86.2	-86.2	0.00	0.00	
2,600.0	12.00	195.00	2,567.2	-341.8	-91.6	-91.6	0.00	0.00	
2,700.0	12.00	195.00	2,665.0	-361.9	-97.0	-97.0	0.00	0.00	
2,800.0	12.00	195.00	2,762.8	-382.0	-102.4	-102.4	0.00	0.00	
2,900.0	12.00	195.00	2,860.7	-402.1	-107.7	-107.7	0.00	0.00	
3,000.0	12.00	195.00	2,958.5	-422.2	-113.1	-113.1	0.00	0.00	
3,100.0	12.00	195.00	3,056.3	-442.3	-118.5	-118.5	0.00	0.00	
3,200.0	12.00	195.00	3,154.1	-462.3	-123.9	-123.9	0.00	0.00	
3,300.0	12.00	195.00	3,251.9	-482.4	-129.3	-129.3	0.00	0.00	
3,400.0	12.00	195.00	3,349.7	-502.5	-134.6	-134.6	0.00	0.00	
3,500.0	12.00	195.00	3,447.5	-522.6	-140.0	-140.0	0.00	0.00	
3,600.0	12.00	195.00	3,545.4	-542.7	-145.4	-145.4	0.00	0.00	
3,700.0	12.00	195.00	3,643.2	-562.8	-150.8	-150.8	0.00	0.00	
3,800.0	12.00	195.00	3,741.0	-582.8	-156.2	-156.2	0.00	0.00	
3,900.0	12.00	195.00	3,838.8	-602.9	-161.6	-161.6	0.00	0.00	
4,000.0	12.00	195.00	3,936.6	-623.0	-166.9	-166.9	0.00	0.00	
4,100.0	12.00	195.00	4,034.4	-643.1	-172.3	-172.3	0.00	0.00	
4,200.0	12.00	195.00	4,132.2	-663.2	-177.7	-177.7	0.00	0.00	
4,210.0	12.00	195.00	4,142.0	-665.2	-178.2	-178.2	0.00	0.00	Sussex
4,300.0	12.00	195.00	4,230.1	-683.3	-183.1	-183.1	0.00	0.00	
4,400.0	12.00	195.00	4,327.9	-703.3	-188.5	-188.5	0.00	0.00	
4,451.2	12.00	195.00	4,378.0	-713.6	-191.2	-191.2	0.00	0.00	Sussex Marker
4,500.0	12.00	195.00	4,425.7	-723.4	-193.8	-193.8	0.00	0.00	
4,600.0	12.00	195.00	4,523.5	-743.5	-199.2	-199.2	0.00	0.00	
4,645.0	12.00	195.00	4,567.5	-752.5	-201.6	-201.6	0.00	0.00	Start Drop -1.00
4,700.0	11.45	195.00	4,621.4	-763.3	-204.5	-204.5	1.00	-1.00	

Planning Report

Database:	USA EDM 5000 Multi Users DB	Local Co-ordinate Reference:	Well State 3G-16H
Company:	EnCana Oil & Gas (USA) Inc	TVD Reference:	WELL @ 5072.0ft (Original Well Elev)
Project:	DJ Wattenberg	MD Reference:	WELL @ 5072.0ft (Original Well Elev)
Site:	S16-T3N-R68W (State)	North Reference:	True
Well:	State 3G-16H	Survey Calculation Method:	Minimum Curvature
Wellbore:	Hz		
Design:	Plan #1		

Planned Survey									
Measured Depth (ft)	Inclination (°)	Azimuth (°)	Vertical Depth (ft)	+N/-S (ft)	+E/-W (ft)	Vertical Section (ft)	Dogleg Rate (°/100ft)	Build Rate (°/100ft)	Comments / Formations
4,731.2	11.14	195.00	4,652.0	-769.2	-206.1	-206.1	1.00	-1.00	Shannon
4,800.0	10.45	195.00	4,719.6	-781.7	-209.5	-209.5	1.00	-1.00	
4,900.0	9.45	195.00	4,818.0	-798.4	-213.9	-213.9	1.00	-1.00	
5,000.0	8.45	195.00	4,916.8	-813.4	-218.0	-218.0	1.00	-1.00	
5,100.0	7.45	195.00	5,015.9	-826.8	-221.5	-221.5	1.00	-1.00	
5,200.0	6.45	195.00	5,115.1	-838.4	-224.7	-224.7	1.00	-1.00	
5,300.0	5.45	195.00	5,214.6	-848.5	-227.3	-227.3	1.00	-1.00	
5,400.0	4.45	195.00	5,314.2	-856.8	-229.6	-229.6	1.00	-1.00	
5,500.0	3.45	195.00	5,414.0	-863.4	-231.4	-231.4	1.00	-1.00	
5,600.0	2.45	195.00	5,513.8	-868.4	-232.7	-232.7	1.00	-1.00	
5,700.0	1.45	195.00	5,613.8	-871.7	-233.6	-233.6	1.00	-1.00	
5,800.0	0.45	195.00	5,713.8	-873.3	-234.0	-234.0	1.00	-1.00	
5,845.0	0.00	0.00	5,758.8	-873.5	-234.0	-234.0	1.00	-1.00	EOD; Inc=0°
5,900.0	0.00	0.00	5,813.8	-873.5	-234.0	-234.0	0.00	0.00	
6,000.0	0.00	0.00	5,913.8	-873.5	-234.0	-234.0	0.00	0.00	
6,100.0	0.00	0.00	6,013.8	-873.5	-234.0	-234.0	0.00	0.00	
6,200.0	0.00	0.00	6,113.8	-873.5	-234.0	-234.0	0.00	0.00	
6,300.0	0.00	0.00	6,213.8	-873.5	-234.0	-234.0	0.00	0.00	
6,400.0	0.00	0.00	6,313.8	-873.5	-234.0	-234.0	0.00	0.00	
6,500.0	0.00	0.00	6,413.8	-873.5	-234.0	-234.0	0.00	0.00	
6,558.2	0.00	0.00	6,472.0	-873.5	-234.0	-234.0	0.00	0.00	Teepee Buttes
6,600.0	0.00	0.00	6,513.8	-873.5	-234.0	-234.0	0.00	0.00	
6,700.0	0.00	0.00	6,613.8	-873.5	-234.0	-234.0	0.00	0.00	
6,774.0	0.00	0.00	6,687.8	-873.5	-234.0	-234.0	0.00	0.00	Start Build 8.00
6,800.0	2.08	90.00	6,713.8	-873.5	-233.6	-233.6	8.00	8.00	
6,900.0	10.08	90.00	6,813.1	-873.5	-223.0	-223.0	8.00	8.00	
7,000.0	18.08	90.00	6,910.0	-873.5	-198.7	-198.7	8.00	8.00	
7,100.0	26.08	90.00	7,002.6	-873.5	-161.1	-161.1	8.00	8.00	
7,159.6	30.84	90.00	7,055.0	-873.5	-132.8	-132.8	8.00	8.00	Sharon Springs
7,200.0	34.08	90.00	7,089.1	-873.5	-111.1	-111.1	8.00	8.00	
7,245.6	37.72	90.00	7,126.0	-873.5	-84.4	-84.4	8.00	8.00	Niobrara
7,297.6	41.89	90.00	7,166.0	-873.5	-51.0	-51.0	8.00	8.00	B Chalk
7,300.0	42.08	90.00	7,167.7	-873.5	-49.4	-49.4	8.00	8.00	
7,400.0	50.08	90.00	7,237.1	-873.5	22.5	22.5	8.00	8.00	
7,500.0	58.08	90.00	7,295.7	-873.5	103.4	103.4	8.00	8.00	
7,600.0	66.08	90.00	7,342.5	-873.5	191.7	191.7	8.00	8.00	
7,691.0	73.36	90.00	7,374.0	-873.5	277.0	277.0	8.00	8.00	Ft. Hayes
7,700.0	74.08	90.00	7,376.5	-873.5	285.7	285.7	8.00	8.00	
7,779.2	80.41	90.00	7,394.0	-873.5	362.9	362.9	8.00	8.00	Codell
7,800.0	82.08	90.00	7,397.2	-873.5	383.4	383.4	8.00	8.00	
7,899.0	90.00	90.00	7,404.0	-873.5	482.1	482.1	8.00	8.00	LP @ 7404' TVD; 90°
7,900.0	90.00	90.00	7,404.0	-873.5	483.1	483.1	0.00	0.00	
8,000.0	90.00	90.00	7,404.0	-873.5	583.1	583.1	0.00	0.00	
8,100.0	90.00	90.00	7,404.0	-873.6	683.1	683.1	0.00	0.00	
8,200.0	90.00	90.00	7,404.0	-873.6	783.1	783.1	0.00	0.00	
8,300.0	90.00	90.00	7,404.0	-873.6	883.1	883.1	0.00	0.00	
8,400.0	90.00	90.00	7,404.0	-873.6	983.1	983.1	0.00	0.00	
8,500.0	90.00	90.00	7,404.0	-873.6	1,083.1	1,083.1	0.00	0.00	
8,600.0	90.00	90.00	7,404.0	-873.6	1,183.1	1,183.1	0.00	0.00	
8,700.0	90.00	90.00	7,404.0	-873.6	1,283.1	1,283.1	0.00	0.00	
8,800.0	90.00	90.00	7,404.0	-873.6	1,383.1	1,383.1	0.00	0.00	
8,900.0	90.00	90.00	7,404.0	-873.6	1,483.1	1,483.1	0.00	0.00	

Planning Report

Database:	USA EDM 5000 Multi Users DB	Local Co-ordinate Reference:	Well State 3G-16H
Company:	EnCana Oil & Gas (USA) Inc	TVD Reference:	WELL @ 5072.0ft (Original Well Elev)
Project:	DJ Wattenberg	MD Reference:	WELL @ 5072.0ft (Original Well Elev)
Site:	S16-T3N-R68W (State)	North Reference:	True
Well:	State 3G-16H	Survey Calculation Method:	Minimum Curvature
Wellbore:	Hz		
Design:	Plan #1		

Planned Survey									
Measured Depth (ft)	Inclination (°)	Azimuth (°)	Vertical Depth (ft)	+N/-S (ft)	+E/-W (ft)	Vertical Section (ft)	Dogleg Rate (°/100ft)	Build Rate (°/100ft)	Comments / Formations
9,000.0	90.00	90.00	7,404.0	-873.6	1,583.1	1,583.1	0.00	0.00	
9,100.0	90.00	90.00	7,404.0	-873.6	1,683.1	1,683.1	0.00	0.00	
9,200.0	90.00	90.00	7,404.0	-873.6	1,783.1	1,783.1	0.00	0.00	
9,300.0	90.00	90.00	7,404.0	-873.6	1,883.1	1,883.1	0.00	0.00	
9,400.0	90.00	90.00	7,404.0	-873.7	1,983.1	1,983.1	0.00	0.00	
9,500.0	90.00	90.00	7,404.0	-873.7	2,083.1	2,083.1	0.00	0.00	
9,600.0	90.00	90.00	7,404.0	-873.7	2,183.1	2,183.1	0.00	0.00	
9,700.0	90.00	90.00	7,404.0	-873.7	2,283.1	2,283.1	0.00	0.00	
9,800.0	90.00	90.00	7,404.0	-873.7	2,383.1	2,383.1	0.00	0.00	
9,900.0	90.00	90.00	7,404.0	-873.7	2,483.1	2,483.1	0.00	0.00	
10,000.0	90.00	90.00	7,404.0	-873.7	2,583.1	2,583.1	0.00	0.00	
10,100.0	90.00	90.00	7,404.0	-873.7	2,683.1	2,683.1	0.00	0.00	
10,200.0	90.00	90.00	7,404.0	-873.7	2,783.1	2,783.1	0.00	0.00	
10,300.0	90.00	90.00	7,404.0	-873.7	2,883.1	2,883.1	0.00	0.00	
10,400.0	90.00	90.00	7,404.0	-873.7	2,983.1	2,983.1	0.00	0.00	
10,500.0	90.00	90.00	7,404.0	-873.7	3,083.1	3,083.1	0.00	0.00	
10,600.0	90.00	90.00	7,404.0	-873.7	3,183.1	3,183.1	0.00	0.00	
10,700.0	90.00	90.00	7,404.0	-873.8	3,283.1	3,283.1	0.00	0.00	
10,800.0	90.00	90.00	7,404.0	-873.8	3,383.1	3,383.1	0.00	0.00	
10,900.0	90.00	90.00	7,404.0	-873.8	3,483.1	3,483.1	0.00	0.00	
11,000.0	90.00	90.00	7,404.0	-873.8	3,583.1	3,583.1	0.00	0.00	
11,100.0	90.00	90.00	7,404.0	-873.8	3,683.1	3,683.1	0.00	0.00	
11,200.0	90.00	90.00	7,404.0	-873.8	3,783.1	3,783.1	0.00	0.00	
11,300.0	90.00	90.00	7,404.0	-873.8	3,883.1	3,883.1	0.00	0.00	
11,400.0	90.00	90.00	7,404.0	-873.8	3,983.1	3,983.1	0.00	0.00	
11,500.0	90.00	90.00	7,404.0	-873.8	4,083.1	4,083.1	0.00	0.00	
11,600.0	90.00	90.00	7,404.0	-873.8	4,183.1	4,183.1	0.00	0.00	
11,700.0	90.00	90.00	7,404.0	-873.8	4,283.1	4,283.1	0.00	0.00	
11,800.0	90.00	90.00	7,404.0	-873.8	4,383.1	4,383.1	0.00	0.00	
11,900.0	90.00	90.00	7,404.0	-873.9	4,483.1	4,483.1	0.00	0.00	
11,971.5	90.00	90.00	7,404.0	-873.9	4,554.6	4,554.6	0.00	0.00	TD at 11971.5 - State 3G-16H PBHL

Targets									
Target Name	Dip Angle (°)	Dip Dir. (°)	TVD (ft)	+N/-S (ft)	+E/-W (ft)	Northing (ft)	Easting (ft)	Latitude	Longitude
State 3G-16H PBHL - hit/miss target - Shape - Point	0.00	0.00	7,404.0	-873.9	4,554.6	1,323,271.36	3,139,605.96	40.219690	-105.000090

Planning Report

Database:	USA EDM 5000 Multi Users DB	Local Co-ordinate Reference:	Well State 3G-16H
Company:	EnCana Oil & Gas (USA) Inc	TVD Reference:	WELL @ 5072.0ft (Original Well Elev)
Project:	DJ Wattenberg	MD Reference:	WELL @ 5072.0ft (Original Well Elev)
Site:	S16-T3N-R68W (State)	North Reference:	True
Well:	State 3G-16H	Survey Calculation Method:	Minimum Curvature
Wellbore:	Hz		
Design:	Plan #1		

Formations						
Measured Depth (ft)	Vertical Depth (ft)	Name	Lithology	Dip (°)	Dip Direction (°)	
72.0	72.0	Base of Fox Hills				
4,210.0	4,142.0	Sussex				
4,451.2	4,378.0	Sussex Marker				
4,731.2	4,652.0	Shannon				
6,558.2	6,472.0	Teepee Buttes				
7,159.6	7,055.0	Sharon Springs				
7,245.6	7,126.0	Niobrara				
7,297.6	7,166.0	B Chalk				
7,691.0	7,374.0	Ft. Hayes				
7,779.2	7,394.0	Codell				

Plan Annotations					
Measured Depth (ft)	Vertical Depth (ft)	Local Coordinates		Comment	
		+N/-S (ft)	+E/-W (ft)		
300.0	300.0	0.0	0.0	KOP @ 300'	
1,500.0	1,491.2	-120.9	-32.4	EOB; Inc=12°	
4,645.0	4,567.5	-752.5	-201.6	Start Drop -1.00	
5,845.0	5,758.8	-873.5	-234.0	EOD; Inc=0°	
6,774.0	6,687.8	-873.5	-234.0	Start Build 8.00	
7,899.0	7,404.0	-873.5	482.1	LP @ 7404' TVD; 90°	
11,971.5	7,404.0	-873.9	4,554.6	TD at 11971.5	

EnCana Oil & Gas (USA) Inc

DJ Wattenberg

S16-T3N-R68W (State)

State 3G-16H

Hz

Plan #1

Anticollision Report

05 February, 2013

Anticollision Report

Company:	EnCana Oil & Gas (USA) Inc	Local Co-ordinate Reference:	Well State 3G-16H
Project:	DJ Wattenberg	TVD Reference:	WELL @ 5072.0ft (Original Well Elev)
Reference Site:	S16-T3N-R68W (State)	MD Reference:	WELL @ 5072.0ft (Original Well Elev)
Site Error:	0.0ft	North Reference:	True
Reference Well:	State 3G-16H	Survey Calculation Method:	Minimum Curvature
Well Error:	0.0ft	Output errors are at	2.00 sigma
Reference Wellbore	Hz	Database:	USA EDM 5000 Multi Users DB
Reference Design:	Plan #1	Offset TVD Reference:	Offset Datum

Reference	Plan #1		
Filter type:	NO GLOBAL FILTER: Using user defined selection & filtering criteria		
Interpolation Method:	MD Interval 100.0ft	Error Model:	Systematic Ellipse
Depth Range:	Unlimited	Scan Method:	Closest Approach 3D
Results Limited by:	Maximum center-center distance of 500.0ft	Error Surface:	Elliptical Conic
Warning Levels Evaluated at:	2.00 Sigma		

Survey Tool Program		Date	2/5/2013	
From (ft)	To (ft)	Survey (Wellbore)	Tool Name	Description
0.0	11,971.5	Plan #1 (Hz)	MWD	Geolink MWD

Site Name	Reference Measured Depth (ft)	Offset Measured Depth (ft)	Distance Between Centres (ft)	Distance Between Ellipses (ft)	Separation Factor	Warning
Summary						
Offset Well - Wellbore - Design						
S16-T3N-R68W (State)						
State 23-16 - Existing - Existing						Out of range
State 3A-16H - Hz - Plan #1	200.0	200.0	61.9	61.3	94.873	CC, ES
State 3A-16H - Hz - Plan #1	700.0	692.2	96.4	94.1	40.423	SF
State 3B-16H - Hz - Plan #1	300.0	300.0	51.0	50.0	50.907	CC, ES
State 3B-16H - Hz - Plan #1	700.0	696.3	71.9	69.6	30.081	SF
State 3C-16H - Hz - Plan #1	300.0	300.0	40.1	39.1	39.999	CC, ES
State 3C-16H - Hz - Plan #1	700.0	698.9	54.4	52.0	22.724	SF
State 3D-16H - Hz - Plan #1	200.0	200.0	32.8	32.1	50.227	CC
State 3D-16H - Hz - Plan #1	300.0	299.9	32.9	31.9	32.870	ES
State 3D-16H - Hz - Plan #1	600.0	598.9	44.4	42.3	21.263	SF
State 3E-16H - Hz - Plan #1	300.0	300.0	21.9	20.9	21.817	CC
State 3E-16H - Hz - Plan #1	400.0	400.2	22.2	20.8	16.390	ES
State 3E-16H - Hz - Plan #1	800.0	800.8	31.3	28.5	11.020	SF
State 3F-16H - Hz - Plan #1	300.0	300.0	10.9	9.9	10.909	CC, ES
State 3F-16H - Hz - Plan #1	11,971.5	11,704.6	414.8	218.9	2.118	SF
State 3H-16H - Hz - Plan #1	200.0	200.0	7.3	6.6	11.161	CC, ES
State 3H-16H - Hz - Plan #1	11,971.5	11,807.0	414.8	218.4	2.112	SF

Anticollision Report

Company:	EnCana Oil & Gas (USA) Inc	Local Co-ordinate Reference:	Well State 3G-16H
Project:	DJ Wattenberg	TVD Reference:	WELL @ 5072.0ft (Original Well Elev)
Reference Site:	S16-T3N-R68W (State)	MD Reference:	WELL @ 5072.0ft (Original Well Elev)
Site Error:	0.0ft	North Reference:	True
Reference Well:	State 3G-16H	Survey Calculation Method:	Minimum Curvature
Well Error:	0.0ft	Output errors are at	2.00 sigma
Reference Wellbore	Hz	Database:	USA EDM 5000 Multi Users DB
Reference Design:	Plan #1	Offset TVD Reference:	Offset Datum

Offset Design													Offset Site Error:	0.0 ft
S16-T3N-R68W (State) - State 3A-16H - Hz - Plan #1													Offset Well Error:	0.0 ft
Survey Program: 0-MWD														
Reference		Offset		Semi Major Axis			Distance						Warning	
Measured Depth (ft)	Vertical Depth (ft)	Measured Depth (ft)	Vertical Depth (ft)	Reference (ft)	Offset (ft)	Highside Toolface (°)	Offset Wellbore Centre +N/-S (ft)	+E/-W (ft)	Between Centres (ft)	Between Ellipses (ft)	Total Uncertainty Axis	Separation Factor		
0.0	0.0	0.0	0.0	0.0	0.0	0.00	61.9	0.0	61.9					
100.0	100.0	100.0	100.0	0.2	0.2	0.00	61.9	0.0	61.9	61.6	0.30	203.922		
200.0	200.0	200.0	200.0	0.3	0.3	0.00	61.9	0.0	61.9	61.3	0.65	94.873 CC, ES		
300.0	300.0	298.9	298.9	0.5	0.5	-0.16	62.8	-0.2	62.8	61.8	1.00	62.776		
400.0	400.0	397.8	397.8	0.7	0.7	164.59	65.3	-0.7	66.2	64.8	1.35	49.107		
500.0	500.0	496.4	496.3	0.9	0.9	164.46	69.4	-1.5	72.9	71.2	1.69	43.039		
600.0	599.9	594.6	594.3	1.0	1.1	164.44	75.2	-2.7	83.0	81.0	2.04	40.686		
700.0	699.7	692.2	691.6	1.2	1.3	164.49	82.6	-4.2	96.4	94.1	2.39	40.423 SF		
800.0	799.4	789.0	788.0	1.4	1.5	164.59	91.6	-6.1	113.2	110.5	2.73	41.448		
900.0	898.9	885.0	883.3	1.7	1.7	164.69	102.0	-8.2	133.2	130.1	3.08	43.319		
1,000.0	998.3	979.9	977.5	1.9	2.0	164.79	113.8	-10.7	156.5	153.1	3.42	45.773		
1,100.0	1,097.4	1,073.6	1,070.2	2.2	2.3	164.88	127.0	-13.4	182.9	179.2	3.76	48.641		
1,200.0	1,196.3	1,166.0	1,161.4	2.5	2.6	164.96	141.5	-16.3	212.5	208.4	4.10	51.811		
1,300.0	1,294.9	1,256.9	1,251.0	2.8	2.9	165.02	157.2	-19.5	245.2	240.8	4.44	55.206		
1,400.0	1,393.3	1,346.3	1,338.7	3.1	3.2	165.07	173.9	-23.0	280.9	276.2	4.78	58.771		
1,500.0	1,491.2	1,434.0	1,424.5	3.5	3.5	165.09	191.6	-26.6	319.6	314.5	5.12	62.462		
1,600.0	1,589.1	1,520.3	1,508.7	3.9	3.9	165.19	210.3	-30.5	360.5	355.0	5.46	65.967		
1,700.0	1,686.9	1,605.5	1,591.4	4.3	4.2	165.22	229.9	-34.5	402.6	396.8	5.81	69.285		
1,800.0	1,784.7	1,689.5	1,672.7	4.7	4.6	165.21	250.5	-38.7	446.1	439.9	6.16	72.444		
1,900.0	1,882.5	1,772.3	1,752.6	5.0	5.0	165.16	271.9	-43.1	490.8	484.3	6.50	75.468		

Anticollision Report

Company:	EnCana Oil & Gas (USA) Inc	Local Co-ordinate Reference:	Well State 3G-16H
Project:	DJ Wattenberg	TVD Reference:	WELL @ 5072.0ft (Original Well Elev)
Reference Site:	S16-T3N-R68W (State)	MD Reference:	WELL @ 5072.0ft (Original Well Elev)
Site Error:	0.0ft	North Reference:	True
Reference Well:	State 3G-16H	Survey Calculation Method:	Minimum Curvature
Well Error:	0.0ft	Output errors are at	2.00 sigma
Reference Wellbore	Hz	Database:	USA EDM 5000 Multi Users DB
Reference Design:	Plan #1	Offset TVD Reference:	Offset Datum

Offset Design													Offset Site Error:	0.0 ft	
S16-T3N-R68W (State) - State 3B-16H - Hz - Plan #1													Survey Program:	0-MWD	
													Offset Well Error:	0.0 ft	
Reference				Offset			Semi Major Axis			Distance			Total Uncertainty Axis	Separation Factor	Warning
Measured Depth (ft)	Vertical Depth (ft)	Measured Depth (ft)	Vertical Depth (ft)	Reference (ft)	Offset (ft)	Highside Toolface (°)	Offset Wellbore Centre +N/-S (ft)	+E/-W (ft)	Between Centres (ft)	Between Ellipses (ft)					
0.0	0.0	0.0	0.0	0.0	0.0	0.00	51.0	0.0	51.0						
100.0	100.0	100.0	100.0	0.2	0.2	0.00	51.0	0.0	51.0	50.7	0.30	167.935			
200.0	200.0	200.0	200.0	0.3	0.3	0.00	51.0	0.0	51.0	50.3	0.65	78.130			
300.0	300.0	300.0	300.0	0.5	0.5	0.00	51.0	0.0	51.0	50.0	1.00	50.907 CC, ES			
400.0	400.0	400.0	400.0	0.7	0.7	165.25	51.0	0.0	51.8	50.5	1.35	38.380			
500.0	500.0	499.1	499.0	0.9	0.8	165.68	51.8	-0.2	55.2	53.5	1.70	32.511			
600.0	599.9	597.9	597.8	1.0	1.0	165.97	54.3	-0.9	61.9	59.9	2.05	30.274			
700.0	699.7	696.3	696.1	1.2	1.2	166.12	58.4	-2.1	71.9	69.6	2.39	30.081 SF			
800.0	799.4	794.1	793.8	1.4	1.4	166.16	64.0	-3.7	85.3	82.5	2.74	31.149			
900.0	898.9	891.2	890.6	1.7	1.6	166.12	71.2	-5.8	101.9	98.8	3.08	33.044			
1,000.0	998.3	987.4	986.4	1.9	1.8	166.04	79.9	-8.3	121.8	118.4	3.43	35.506			
1,100.0	1,097.4	1,082.6	1,081.0	2.2	2.0	165.94	90.0	-11.2	144.9	141.1	3.78	38.370			
1,200.0	1,196.3	1,176.6	1,174.2	2.5	2.3	165.82	101.5	-14.5	171.1	167.0	4.12	41.526			
1,300.0	1,294.9	1,269.3	1,266.0	2.8	2.5	165.70	114.3	-18.1	200.5	196.0	4.47	44.895			
1,400.0	1,393.3	1,360.6	1,356.1	3.1	2.8	165.58	128.2	-22.1	232.9	228.1	4.81	48.422			
1,500.0	1,491.2	1,450.3	1,444.5	3.5	3.1	165.45	143.3	-26.5	268.4	263.2	5.16	52.065			
1,600.0	1,589.1	1,538.7	1,531.3	3.9	3.4	165.39	159.4	-31.1	306.0	300.5	5.51	55.540			
1,700.0	1,686.9	1,627.6	1,618.2	4.3	3.7	165.28	176.9	-36.1	344.9	339.1	5.87	58.784			
1,800.0	1,784.7	1,719.6	1,708.2	4.7	4.1	165.16	195.3	-41.4	384.2	378.0	6.23	61.638			
1,900.0	1,882.5	1,811.5	1,798.2	5.0	4.4	165.07	213.6	-46.6	423.5	416.9	6.60	64.164			
2,000.0	1,980.3	1,903.5	1,888.1	5.4	4.8	164.99	232.0	-51.9	462.7	455.7	6.97	66.416			

Anticollision Report

Company:	EnCana Oil & Gas (USA) Inc	Local Co-ordinate Reference:	Well State 3G-16H
Project:	DJ Wattenberg	TVD Reference:	WELL @ 5072.0ft (Original Well Elev)
Reference Site:	S16-T3N-R68W (State)	MD Reference:	WELL @ 5072.0ft (Original Well Elev)
Site Error:	0.0ft	North Reference:	True
Reference Well:	State 3G-16H	Survey Calculation Method:	Minimum Curvature
Well Error:	0.0ft	Output errors are at	2.00 sigma
Reference Wellbore	Hz	Database:	USA EDM 5000 Multi Users DB
Reference Design:	Plan #1	Offset TVD Reference:	Offset Datum

Offset Design													Offset Site Error:	0.0 ft
S16-T3N-R68W (State) - State 3C-16H - Hz - Plan #1													Offset Well Error:	0.0 ft
Survey Program: 0-MWD														
Reference		Offset		Semi Major Axis			Distance						Warning	
Measured Depth (ft)	Vertical Depth (ft)	Measured Depth (ft)	Vertical Depth (ft)	Reference (ft)	Offset (ft)	Highside Toolface (°)	Offset Wellbore Centre +N/-S (ft)	+E/-W (ft)	Between Centres (ft)	Between Ellipses (ft)	Total Uncertainty Axis	Separation Factor		
0.0	0.0	0.0	0.0	0.0	0.0	0.00	40.1	0.0	40.1					
100.0	100.0	100.0	100.0	0.2	0.2	0.00	40.1	0.0	40.1	39.8	0.30	131.949		
200.0	200.0	200.0	200.0	0.3	0.3	0.00	40.1	0.0	40.1	39.4	0.65	61.388		
300.0	300.0	300.0	300.0	0.5	0.5	0.00	40.1	0.0	40.1	39.1	1.00	39.999	CC, ES	
400.0	400.0	400.0	400.0	0.7	0.7	165.31	40.1	0.0	40.9	39.6	1.35	30.289		
500.0	500.0	500.0	500.0	0.9	0.8	166.18	40.1	0.0	43.5	41.8	1.70	25.566		
600.0	599.9	599.9	599.9	1.0	1.0	167.43	40.1	0.0	47.7	45.7	2.05	23.289		
700.0	699.7	698.9	698.9	1.2	1.2	168.37	40.8	-0.4	54.4	52.0	2.39	22.724	SF	
800.0	799.4	797.5	797.4	1.4	1.4	168.63	43.1	-1.5	64.4	61.6	2.74	23.475		
900.0	898.9	895.6	895.4	1.7	1.6	168.43	46.9	-3.3	77.5	74.4	3.09	25.087		
1,000.0	998.3	993.0	992.6	1.9	1.7	167.98	52.2	-5.9	93.7	90.3	3.44	27.288		
1,100.0	1,097.4	1,089.5	1,088.9	2.2	1.9	167.43	58.9	-9.2	113.2	109.4	3.78	29.905		
1,200.0	1,196.3	1,185.1	1,184.1	2.5	2.1	166.85	66.9	-13.1	135.7	131.6	4.13	32.820		
1,300.0	1,294.9	1,279.6	1,278.0	2.8	2.4	166.29	76.3	-17.6	161.3	156.8	4.49	35.950		
1,400.0	1,393.3	1,372.9	1,370.5	3.1	2.6	165.77	86.9	-22.8	189.9	185.1	4.84	39.233		
1,500.0	1,491.2	1,464.8	1,461.5	3.5	2.8	165.29	98.6	-28.6	221.6	216.4	5.20	42.624		
1,600.0	1,589.1	1,555.5	1,551.1	3.9	3.1	164.88	111.5	-34.8	255.4	249.8	5.57	45.860		
1,700.0	1,686.9	1,647.3	1,641.5	4.3	3.4	164.45	125.7	-41.8	290.4	284.4	5.95	48.836		
1,800.0	1,784.7	1,740.9	1,733.7	4.7	3.7	164.09	140.3	-48.9	325.5	319.2	6.33	51.439		
1,900.0	1,882.5	1,834.5	1,825.9	5.0	4.0	163.80	154.9	-56.0	360.7	353.9	6.71	53.730		
2,000.0	1,980.3	1,928.1	1,918.1	5.4	4.3	163.56	169.5	-63.1	395.8	388.7	7.10	55.761		
2,100.0	2,078.1	2,021.7	2,010.3	5.8	4.6	163.36	184.1	-70.3	431.0	423.5	7.49	57.573		
2,200.0	2,175.9	2,115.3	2,102.4	6.2	4.9	163.19	198.7	-77.4	466.1	458.3	7.87	59.198		

CC - Min centre to center distance or covergent point, SF - min separation factor, ES - min ellipse separation

Anticollision Report

Company:	EnCana Oil & Gas (USA) Inc	Local Co-ordinate Reference:	Well State 3G-16H
Project:	DJ Wattenberg	TVD Reference:	WELL @ 5072.0ft (Original Well Elev)
Reference Site:	S16-T3N-R68W (State)	MD Reference:	WELL @ 5072.0ft (Original Well Elev)
Site Error:	0.0ft	North Reference:	True
Reference Well:	State 3G-16H	Survey Calculation Method:	Minimum Curvature
Well Error:	0.0ft	Output errors are at	2.00 sigma
Reference Wellbore	Hz	Database:	USA EDM 5000 Multi Users DB
Reference Design:	Plan #1	Offset TVD Reference:	Offset Datum

Offset Design													Offset Site Error:	0.0 ft
S16-T3N-R68W (State) - State 3D-16H - Hz - Plan #1													Offset Well Error:	0.0 ft
Survey Program: 0-MWD														
Reference		Offset		Semi Major Axis			Distance							
Measured Depth (ft)	Vertical Depth (ft)	Measured Depth (ft)	Vertical Depth (ft)	Reference (ft)	Offset (ft)	Highside Toolface (°)	Offset Wellbore Centre +N/-S (ft)	+E/-W (ft)	Between Centres (ft)	Between Ellipses (ft)	Total Uncertainty Axis	Separation Factor	Warning	
0.0	0.0	0.0	0.0	0.0	0.0	0.00	32.8	0.0	32.8					
100.0	100.0	100.0	100.0	0.2	0.2	0.00	32.8	0.0	32.8	32.5	0.30	107.959		
200.0	200.0	200.0	200.0	0.3	0.3	0.00	32.8	0.0	32.8	32.1	0.65	50.227 CC		
300.0	300.0	299.9	299.9	0.5	0.5	-1.49	32.9	-0.9	32.9	31.9	1.00	32.870 ES		
400.0	400.0	399.7	399.7	0.7	0.7	159.65	33.4	-3.4	34.4	33.0	1.36	25.356		
500.0	500.0	499.4	499.3	0.9	0.9	154.70	34.1	-7.7	38.1	36.4	1.72	22.218		
600.0	599.9	598.9	598.5	1.0	1.1	149.71	35.2	-13.7	44.4	42.3	2.09	21.263 SF		
700.0	699.7	698.0	697.4	1.2	1.3	145.36	36.5	-21.3	53.1	50.6	2.47	21.520		
800.0	799.4	796.3	795.3	1.4	1.5	142.39	38.7	-30.2	64.7	61.9	2.86	22.657		
900.0	898.9	894.0	892.4	1.7	1.7	140.91	42.3	-39.9	79.5	76.2	3.26	24.415		
1,000.0	998.3	990.9	988.6	1.9	2.0	140.38	47.2	-50.4	97.3	93.6	3.66	26.543		
1,100.0	1,097.4	1,087.0	1,083.8	2.2	2.3	140.39	53.4	-61.6	118.0	113.9	4.08	28.897		
1,200.0	1,196.3	1,182.0	1,177.8	2.5	2.5	140.69	60.9	-73.6	141.7	137.2	4.51	31.391		
1,300.0	1,294.9	1,275.9	1,270.4	2.8	2.8	141.13	69.7	-86.3	168.2	163.3	4.95	33.970		
1,400.0	1,393.3	1,371.1	1,364.2	3.1	3.2	141.67	79.4	-99.6	197.1	191.7	5.41	36.466		
1,500.0	1,491.2	1,466.4	1,458.0	3.5	3.5	142.31	89.1	-113.0	227.4	221.5	5.87	38.739		
1,600.0	1,589.1	1,561.4	1,551.6	3.9	3.8	143.06	98.8	-126.4	258.4	252.0	6.35	40.714		
1,700.0	1,686.9	1,656.4	1,645.2	4.3	4.1	143.66	108.5	-139.7	289.4	282.5	6.82	42.403		
1,800.0	1,784.7	1,751.5	1,738.8	4.7	4.4	144.14	118.2	-153.1	320.4	313.1	7.30	43.861		
1,900.0	1,882.5	1,846.7	1,832.6	5.0	4.8	144.53	127.9	-166.4	351.4	343.7	7.79	45.131		
2,000.0	1,980.3	1,947.3	1,931.7	5.4	5.1	144.97	137.6	-179.8	381.7	373.5	8.27	46.144		
2,100.0	2,078.1	2,048.6	2,032.0	5.8	5.4	145.49	146.4	-191.8	410.7	402.0	8.75	46.936		
2,200.0	2,175.9	2,150.8	2,133.3	6.2	5.7	146.09	154.1	-202.5	438.3	429.1	9.22	47.550		
2,300.0	2,273.8	2,253.7	2,235.6	6.6	5.9	146.75	160.9	-211.8	464.6	454.9	9.67	48.022		
2,400.0	2,371.6	2,357.3	2,338.7	7.0	6.2	147.48	166.6	-219.6	489.5	479.4	10.12	48.381		

CC - Min centre to center distance or convergent point, SF - min separation factor, ES - min ellipse separation

Anticollision Report

Company:	EnCana Oil & Gas (USA) Inc	Local Co-ordinate Reference:	Well State 3G-16H
Project:	DJ Wattenberg	TVD Reference:	WELL @ 5072.0ft (Original Well Elev)
Reference Site:	S16-T3N-R68W (State)	MD Reference:	WELL @ 5072.0ft (Original Well Elev)
Site Error:	0.0ft	North Reference:	True
Reference Well:	State 3G-16H	Survey Calculation Method:	Minimum Curvature
Well Error:	0.0ft	Output errors are at	2.00 sigma
Reference Wellbore	Hz	Database:	USA EDM 5000 Multi Users DB
Reference Design:	Plan #1	Offset TVD Reference:	Offset Datum

Offset Design S16-T3N-R68W (State) - State 3E-16H - Hz - Plan #1													Offset Site Error:	0.0 ft
Survey Program: 0-MWD													Offset Well Error:	0.0 ft
Reference		Offset		Semi Major Axis			Distance				Total Uncertainty Axis	Separation Factor	Warning	
Measured Depth (ft)	Vertical Depth (ft)	Measured Depth (ft)	Vertical Depth (ft)	Reference (ft)	Offset (ft)	Highside Tooface (°)	Offset Wellbore Centre +N/-S (ft)	+E/-W (ft)	Between Centres (ft)	Between Ellipses (ft)				
0.0	0.0	0.0	0.0	0.0	0.0	0.00	21.9	0.0	21.9					
100.0	100.0	100.0	100.0	0.2	0.2	0.00	21.9	0.0	21.9	21.6	0.30	71.972		
200.0	200.0	200.0	200.0	0.3	0.3	0.00	21.9	0.0	21.9	21.2	0.65	33.484		
300.0	300.0	300.0	300.0	0.5	0.5	0.00	21.9	0.0	21.9	20.9	1.00	21.817 CC		
400.0	400.0	400.2	400.2	0.7	0.7	163.82	21.3	-0.7	22.2	20.8	1.35	16.390 ES		
500.0	500.0	500.5	500.4	0.9	0.9	160.48	19.7	-2.7	23.1	21.4	1.70	13.554		
600.0	599.9	600.6	600.5	1.0	1.0	155.50	16.9	-6.1	24.8	22.8	2.06	12.027		
700.0	699.7	700.8	700.4	1.2	1.2	149.65	13.0	-10.9	27.5	25.1	2.44	11.277		
800.0	799.4	800.8	800.2	1.4	1.4	143.69	8.1	-17.0	31.3	28.5	2.84	11.020 SF		
900.0	898.9	900.8	899.7	1.7	1.7	138.16	2.1	-24.5	36.3	33.0	3.27	11.079		
1,000.0	998.3	1,000.7	998.9	1.9	1.9	133.33	-5.1	-33.3	42.5	38.7	3.75	11.333		
1,100.0	1,097.4	1,100.4	1,097.8	2.2	2.2	129.28	-13.3	-43.4	49.9	45.6	4.26	11.696		
1,200.0	1,196.3	1,200.0	1,196.3	2.5	2.5	125.94	-22.5	-54.8	58.4	53.6	4.82	12.115		
1,300.0	1,294.9	1,299.5	1,294.4	2.8	2.8	123.20	-32.9	-67.6	68.2	62.8	5.43	12.551		
1,400.0	1,393.3	1,398.9	1,392.3	3.1	3.1	121.57	-43.7	-81.0	79.0	73.0	6.07	13.024		
1,500.0	1,491.2	1,498.2	1,490.1	3.5	3.5	121.26	-54.6	-94.4	90.8	84.1	6.72	13.514		
1,600.0	1,589.1	1,597.4	1,587.9	3.9	3.8	121.51	-65.4	-107.8	103.0	95.7	7.38	13.966		
1,700.0	1,686.9	1,696.7	1,685.6	4.3	4.1	121.71	-76.3	-121.2	115.3	107.2	8.04	14.333		
1,800.0	1,784.7	1,795.9	1,783.3	4.7	4.5	121.88	-87.1	-134.6	127.5	118.8	8.71	14.635		
1,900.0	1,882.5	1,895.2	1,881.1	5.0	4.8	122.01	-98.0	-148.0	139.7	130.3	9.38	14.888		
2,000.0	1,980.3	1,994.4	1,978.8	5.4	5.1	122.12	-108.8	-161.4	151.9	141.9	10.06	15.102		
2,100.0	2,078.1	2,093.7	2,076.6	5.8	5.5	122.26	-119.6	-174.7	164.1	153.4	10.74	15.290		
2,200.0	2,175.9	2,193.1	2,174.8	6.2	5.8	122.81	-129.6	-187.0	176.3	164.9	11.37	15.503		
2,300.0	2,273.8	2,292.5	2,273.1	6.6	6.1	123.82	-138.4	-198.0	188.4	176.4	11.97	15.745		
2,400.0	2,371.6	2,391.7	2,371.5	7.0	6.3	125.20	-146.3	-207.6	200.6	188.1	12.52	16.024		
2,500.0	2,469.4	2,490.7	2,469.9	7.4	6.6	126.88	-153.0	-215.9	212.9	199.8	13.02	16.353		
2,600.0	2,567.2	2,589.5	2,568.3	7.8	6.8	128.81	-158.6	-222.8	225.4	211.9	13.46	16.741		
2,700.0	2,665.0	2,687.9	2,666.5	8.2	7.0	130.94	-163.2	-228.5	238.3	224.5	13.86	17.199		
2,800.0	2,762.8	2,786.1	2,764.5	8.6	7.2	133.23	-166.6	-232.8	251.8	237.6	14.19	17.738		
2,900.0	2,860.7	2,883.8	2,862.1	9.0	7.3	135.63	-169.0	-235.7	265.9	251.4	14.48	18.368		
3,000.0	2,958.5	2,981.0	2,959.3	9.4	7.5	138.12	-170.4	-237.4	280.8	266.1	14.70	19.097		
3,100.0	3,056.3	3,078.0	3,056.3	9.8	7.6	140.65	-170.8	-237.9	296.6	281.7	14.89	19.922		
3,200.0	3,154.1	3,175.8	3,154.1	10.2	7.7	143.05	-170.8	-237.9	313.1	298.0	15.06	20.789		
3,300.0	3,251.9	3,273.6	3,251.9	10.6	7.8	145.20	-170.8	-237.9	330.0	314.8	15.24	21.663		
3,400.0	3,349.7	3,371.4	3,349.7	11.0	8.0	147.14	-170.8	-237.9	347.4	332.0	15.42	22.535		
3,500.0	3,447.5	3,469.2	3,447.5	11.4	8.1	148.90	-170.8	-237.9	365.2	349.6	15.61	23.398		
3,600.0	3,545.4	3,567.0	3,545.4	11.8	8.2	150.50	-170.8	-237.9	383.2	367.4	15.80	24.248		
3,700.0	3,643.2	3,664.9	3,643.2	12.2	8.3	151.96	-170.8	-237.9	401.6	385.5	16.01	25.082		
3,800.0	3,741.0	3,762.7	3,741.0	12.6	8.5	153.28	-170.8	-237.9	420.1	403.9	16.22	25.895		
3,900.0	3,838.8	3,860.5	3,838.8	13.0	8.6	154.50	-170.8	-237.9	438.9	422.4	16.44	26.688		
4,000.0	3,936.6	3,958.3	3,936.6	13.4	8.7	155.62	-170.8	-237.9	457.8	441.1	16.67	27.458		
4,100.0	4,034.4	4,056.1	4,034.4	13.8	8.9	156.64	-170.8	-237.9	476.9	460.0	16.91	28.204		
4,200.0	4,132.2	4,153.9	4,132.2	14.2	9.0	157.59	-170.8	-237.9	496.1	478.9	17.15	28.927		

CC - Min centre to center distance or convergent point, SF - min separation factor, ES - min ellipse separation

Anticollision Report

Company:	EnCana Oil & Gas (USA) Inc	Local Co-ordinate Reference:	Well State 3G-16H
Project:	DJ Wattenberg	TVD Reference:	WELL @ 5072.0ft (Original Well Elev)
Reference Site:	S16-T3N-R68W (State)	MD Reference:	WELL @ 5072.0ft (Original Well Elev)
Site Error:	0.0ft	North Reference:	True
Reference Well:	State 3G-16H	Survey Calculation Method:	Minimum Curvature
Well Error:	0.0ft	Output errors are at	2.00 sigma
Reference Wellbore	Hz	Database:	USA EDM 5000 Multi Users DB
Reference Design:	Plan #1	Offset TVD Reference:	Offset Datum

Offset Design S16-T3N-R68W (State) - State 3F-16H - Hz - Plan #1													Offset Site Error:	0.0 ft
Survey Program: 0-MWD													Offset Well Error:	0.0 ft
Reference		Offset		Semi Major Axis			Distance				Total Uncertainty Axis	Separation Factor	Warning	
Measured Depth (ft)	Vertical Depth (ft)	Measured Depth (ft)	Vertical Depth (ft)	Reference (ft)	Offset (ft)	Highside Toolface (°)	Offset Wellbore Centre +N/-S (ft)	+E/-W (ft)	Between Centres (ft)	Between Ellipses (ft)				
0.0	0.0	0.0	0.0	0.0	0.0	0.00	10.9	0.0	10.9					
100.0	100.0	100.0	100.0	0.2	0.2	0.00	10.9	0.0	10.9	10.6	0.30	35.986		
200.0	200.0	200.0	200.0	0.3	0.3	0.00	10.9	0.0	10.9	10.3	0.65	16.742		
300.0	300.0	300.0	300.0	0.5	0.5	0.00	10.9	0.0	10.9	9.9	1.00	10.909 CC, ES		
400.0	400.0	400.0	400.0	0.7	0.7	166.10	10.9	0.0	11.8	10.4	1.35	8.716		
500.0	500.0	500.2	500.2	0.9	0.9	167.38	10.1	-0.3	13.5	11.8	1.70	7.945		
600.0	599.9	600.4	600.4	1.0	1.0	167.49	7.7	-1.4	15.3	13.3	2.05	7.469		
700.0	699.7	700.7	700.5	1.2	1.2	166.79	3.7	-3.1	17.2	14.8	2.40	7.156		
800.0	799.4	800.9	800.6	1.4	1.4	165.52	-2.0	-5.5	19.1	16.4	2.75	6.941		
900.0	898.9	901.2	900.6	1.7	1.6	163.86	-9.2	-8.6	21.1	18.0	3.11	6.791		
1,000.0	998.3	1,001.6	1,000.5	1.9	1.8	161.93	-18.1	-12.3	23.3	19.8	3.48	6.682		
1,100.0	1,097.4	1,101.9	1,100.2	2.2	2.1	159.81	-28.6	-16.8	25.5	21.7	3.87	6.598		
1,200.0	1,196.3	1,202.3	1,199.7	2.5	2.4	157.58	-40.7	-21.9	27.9	23.6	4.27	6.527		
1,300.0	1,294.9	1,302.7	1,298.9	2.8	2.6	155.29	-54.4	-27.7	30.4	25.7	4.71	6.459		
1,400.0	1,393.3	1,403.1	1,398.0	3.1	3.0	152.99	-69.7	-34.2	33.1	27.9	5.18	6.387		
1,500.0	1,491.2	1,503.5	1,496.7	3.5	3.3	150.70	-86.6	-41.4	35.9	30.2	5.70	6.307		
1,600.0	1,589.1	1,604.0	1,595.1	3.9	3.7	147.78	-105.1	-49.2	38.2	31.9	6.29	6.079		
1,700.0	1,686.9	1,703.9	1,692.9	4.3	4.0	144.42	-124.2	-57.4	40.0	33.0	6.94	5.760		
1,800.0	1,784.7	1,803.9	1,790.7	4.7	4.4	141.36	-143.3	-65.5	41.9	34.3	7.64	5.485		
1,900.0	1,882.5	1,903.9	1,888.5	5.0	4.8	138.57	-162.5	-73.6	43.9	35.5	8.37	5.248		
2,000.0	1,980.3	2,003.8	1,986.2	5.4	5.2	136.03	-181.6	-81.7	46.0	36.9	9.12	5.046		
2,100.0	2,078.1	2,103.8	2,084.0	5.8	5.6	133.72	-200.7	-89.8	48.2	38.3	9.89	4.873		
2,200.0	2,175.9	2,203.7	2,181.8	6.2	6.0	131.61	-219.9	-98.0	50.5	39.8	10.68	4.725		
2,300.0	2,273.8	2,303.7	2,279.6	6.6	6.3	129.68	-239.0	-106.1	52.8	41.3	11.48	4.599		
2,400.0	2,371.6	2,403.6	2,377.3	7.0	6.7	127.92	-258.1	-114.2	55.2	42.9	12.29	4.490		
2,500.0	2,469.4	2,503.6	2,475.1	7.4	7.1	126.31	-277.3	-122.3	57.6	44.5	13.10	4.396		
2,600.0	2,567.2	2,603.6	2,572.9	7.8	7.5	124.83	-296.4	-130.4	60.1	46.1	13.92	4.315		
2,700.0	2,665.0	2,703.5	2,670.7	8.2	7.9	123.46	-315.5	-138.6	62.6	47.8	14.74	4.245		
2,800.0	2,762.8	2,803.5	2,768.4	8.6	8.3	122.20	-334.6	-146.7	65.1	49.5	15.57	4.183		
2,900.0	2,860.7	2,903.4	2,866.2	9.0	8.7	121.04	-353.8	-154.8	67.7	51.3	16.39	4.129		
3,000.0	2,958.5	3,003.4	2,964.0	9.4	9.1	119.96	-372.9	-162.9	70.3	53.1	17.22	4.081		
3,100.0	3,056.3	3,103.4	3,061.7	9.8	9.5	118.96	-392.0	-171.1	72.9	54.8	18.05	4.039		
3,200.0	3,154.1	3,203.2	3,159.5	10.2	9.9	118.04	-411.1	-179.2	75.5	56.7	18.87	4.003		
3,300.0	3,251.9	3,302.7	3,257.0	10.6	10.3	117.93	-429.2	-186.8	78.6	59.0	19.60	4.009		
3,400.0	3,349.7	3,402.2	3,354.8	11.0	10.6	118.96	-445.7	-193.8	82.2	62.0	20.18	4.074		
3,500.0	3,447.5	3,501.5	3,452.8	11.4	10.9	120.96	-460.6	-200.1	86.5	65.9	20.61	4.198		
3,600.0	3,545.4	3,600.6	3,550.9	11.8	11.2	123.73	-473.9	-205.8	91.7	70.8	20.88	4.390		
3,700.0	3,643.2	3,699.5	3,648.9	12.2	11.5	127.09	-485.6	-210.8	97.9	76.9	21.00	4.661		
3,800.0	3,741.0	3,798.1	3,746.9	12.6	11.8	130.81	-495.8	-215.1	105.3	84.3	20.96	5.023		
3,900.0	3,838.8	3,896.4	3,844.7	13.0	12.0	134.72	-504.3	-218.7	114.1	93.3	20.80	5.486		
4,000.0	3,936.6	3,994.2	3,942.3	13.4	12.2	138.63	-511.3	-221.7	124.5	104.0	20.55	6.059		
4,100.0	4,034.4	4,091.6	4,039.4	13.8	12.3	142.42	-516.7	-224.0	136.6	116.4	20.25	6.746		
4,200.0	4,132.2	4,188.4	4,136.2	14.2	12.5	146.01	-520.6	-225.6	150.5	130.5	19.93	7.548		
4,300.0	4,230.1	4,284.7	4,232.5	14.6	12.6	149.33	-523.0	-226.6	166.1	146.5	19.63	8.461		
4,400.0	4,327.9	4,380.4	4,328.1	15.0	12.7	152.37	-523.9	-227.0	183.6	164.2	19.37	9.479		
4,500.0	4,425.7	4,477.9	4,425.7	15.4	12.8	155.08	-523.9	-227.0	202.3	183.1	19.17	10.552		
4,600.0	4,523.5	4,575.8	4,523.5	15.8	12.9	157.34	-523.9	-227.0	221.4	202.3	19.07	11.607		
4,700.0	4,621.4	4,673.6	4,621.4	16.2	13.0	159.26	-523.9	-227.0	240.5	221.5	19.06	12.621		
4,800.0	4,719.6	4,771.8	4,719.6	16.6	13.1	160.81	-523.9	-227.0	258.4	239.3	19.12	13.516		
4,900.0	4,818.0	4,870.3	4,818.0	16.9	13.2	162.04	-523.9	-227.0	274.8	255.6	19.24	14.284		
5,000.0	4,916.8	4,969.1	4,916.8	17.2	13.3	163.03	-523.9	-227.0	289.7	270.3	19.40	14.928		
5,100.0	5,015.9	5,068.1	5,015.9	17.5	13.5	163.83	-523.9	-227.0	302.9	283.3	19.60	15.453		

CC - Min centre to center distance or convergent point, SF - min separation factor, ES - min ellipse separation

Anticollision Report

Company:	EnCana Oil & Gas (USA) Inc	Local Co-ordinate Reference:	Well State 3G-16H
Project:	DJ Wattenberg	TVD Reference:	WELL @ 5072.0ft (Original Well Elev)
Reference Site:	S16-T3N-R68W (State)	MD Reference:	WELL @ 5072.0ft (Original Well Elev)
Site Error:	0.0ft	North Reference:	True
Reference Well:	State 3G-16H	Survey Calculation Method:	Minimum Curvature
Well Error:	0.0ft	Output errors are at	2.00 sigma
Reference Wellbore	Hz	Database:	USA EDM 5000 Multi Users DB
Reference Design:	Plan #1	Offset TVD Reference:	Offset Datum

Offset Design													Offset Site Error:	0.0 ft								
Survey Program: 0-MWD													Offset Well Error:		0.0 ft							
Reference													Offset		Semi Major Axis		Distance				Warning	
Measured Depth (ft)	Vertical Depth (ft)	Measured Depth (ft)	Vertical Depth (ft)	Reference (ft)	Offset (ft)	Highside Toolface (°)	Offset Wellbore Centre +N/-S (ft)	+E/-W (ft)	Between Centres (ft)	Between Ellipses (ft)	Total Uncertainty Axis	Separation Factor	Warning									
5,200.0	5,115.1	5,167.4	5,115.1	17.8	13.6	164.48	-523.9	-227.0	314.6	294.8	19.83	15.866										
5,300.0	5,214.6	5,266.8	5,214.6	18.0	13.7	164.99	-523.9	-227.0	324.6	304.5	20.07	16.172										
5,400.0	5,314.2	5,366.5	5,314.2	18.2	13.8	165.40	-523.9	-227.0	332.9	312.6	20.33	16.376										
5,500.0	5,414.0	5,466.2	5,414.0	18.4	13.9	165.71	-523.9	-227.0	339.6	319.0	20.60	16.485										
5,600.0	5,513.8	5,566.1	5,513.8	18.5	14.0	165.93	-523.9	-227.0	344.6	323.7	20.88	16.503										
5,700.0	5,613.8	5,666.0	5,613.8	18.7	14.2	166.08	-523.9	-227.0	347.9	326.7	21.17	16.434										
5,800.0	5,713.8	5,766.0	5,713.8	18.8	14.3	166.15	-523.9	-227.0	349.5	328.0	21.46	16.283										
5,900.0	5,813.8	5,866.0	5,813.8	18.9	14.4	1.15	-523.9	-227.0	349.7	317.3	32.37	10.801										
6,000.0	5,913.8	5,966.0	5,913.8	19.0	14.5	1.15	-523.9	-227.0	349.7	317.1	32.60	10.726										
6,100.0	6,013.8	6,066.0	6,013.8	19.0	14.7	1.15	-523.9	-227.0	349.7	316.8	32.83	10.651										
6,200.0	6,113.8	6,166.0	6,113.8	19.1	14.8	1.15	-523.9	-227.0	349.7	316.6	33.06	10.577										
6,300.0	6,213.8	6,266.0	6,213.8	19.2	14.9	1.15	-523.9	-227.0	349.7	316.4	33.29	10.503										
6,400.0	6,313.8	6,366.0	6,313.8	19.3	15.0	1.15	-523.9	-227.0	349.7	316.1	33.53	10.430										
6,500.0	6,413.8	6,466.0	6,413.8	19.4	15.2	1.15	-523.9	-227.0	349.7	315.9	33.76	10.357										
6,540.1	6,453.9	6,506.1	6,453.9	19.5	15.2	1.15	-523.9	-227.0	349.7	315.8	33.86	10.327										
6,600.0	6,513.8	6,565.5	6,513.2	19.5	15.3	1.42	-523.9	-225.4	349.7	315.7	34.03	10.278										
6,700.0	6,613.8	6,662.5	6,609.3	19.7	15.3	3.56	-523.9	-212.3	350.3	315.9	34.44	10.173										
6,800.0	6,713.8	6,754.6	6,698.1	19.8	15.4	-82.48	-523.9	-188.0	352.9	329.0	23.87	14.785										
6,900.0	6,813.1	6,842.8	6,779.5	19.8	15.4	-78.11	-523.9	-154.2	357.9	334.1	23.84	15.010										
7,000.0	6,910.0	6,928.5	6,854.0	19.8	15.4	-74.08	-523.9	-112.1	364.5	340.4	24.08	15.136										
7,100.0	7,002.6	7,012.0	6,921.2	19.8	15.4	-70.45	-523.9	-62.7	372.2	347.6	24.55	15.160										
7,200.0	7,089.1	7,093.6	6,981.1	19.8	15.5	-67.26	-523.9	-7.2	380.4	355.2	25.14	15.129										
7,300.0	7,167.7	7,173.8	7,033.3	19.9	15.7	-64.53	-523.9	53.6	388.5	362.6	25.86	15.020										
7,400.0	7,237.1	7,250.0	7,076.3	20.0	16.0	-62.31	-523.9	116.4	396.1	369.5	26.60	14.889										
7,500.0	7,295.7	7,330.8	7,114.4	20.2	16.4	-60.43	-523.9	187.6	402.7	375.2	27.48	14.654										
7,600.0	7,342.5	7,408.0	7,143.1	20.6	17.1	-59.05	-523.9	259.3	408.1	379.6	28.45	14.343										
7,700.0	7,376.5	7,484.8	7,163.8	21.2	18.0	-58.10	-523.9	333.2	412.0	382.4	29.62	13.908										
7,800.0	7,397.2	7,561.2	7,176.4	22.1	19.0	-57.58	-523.9	408.5	414.2	383.2	31.04	13.344										
7,900.0	7,404.0	7,642.1	7,181.0	23.3	20.3	-57.47	-523.9	489.2	414.7	381.9	32.83	12.632										
7,929.9	7,404.0	7,665.9	7,181.0	23.7	20.7	-57.47	-523.9	513.0	414.7	381.0	33.70	12.306										
8,000.0	7,404.0	7,736.0	7,181.0	24.7	22.0	-57.47	-523.9	583.1	414.7	378.7	35.99	11.522										
8,100.0	7,404.0	7,836.0	7,181.0	26.3	23.9	-57.47	-523.9	683.1	414.7	375.3	39.41	10.522										
8,200.0	7,404.0	7,936.0	7,181.0	28.0	25.9	-57.47	-523.9	783.1	414.7	371.7	42.97	9.651										
8,300.0	7,404.0	8,036.0	7,181.0	29.9	28.0	-57.47	-523.9	883.1	414.7	368.1	46.63	8.894										
8,400.0	7,404.0	8,136.0	7,181.0	31.9	30.1	-57.47	-523.9	983.1	414.7	364.3	50.37	8.234										
8,500.0	7,404.0	8,236.0	7,181.0	33.9	32.3	-57.47	-523.9	1,083.1	414.7	360.5	54.17	7.655										
8,600.0	7,404.0	8,336.0	7,181.0	36.1	34.5	-57.47	-524.0	1,183.1	414.7	356.7	58.03	7.147										
8,700.0	7,404.0	8,436.0	7,181.0	38.2	36.8	-57.47	-524.0	1,283.1	414.7	352.8	61.92	6.697										
8,800.0	7,404.0	8,536.0	7,181.0	40.4	39.1	-57.47	-524.0	1,383.1	414.7	348.8	65.85	6.297										
8,900.0	7,404.0	8,636.0	7,181.0	42.7	41.4	-57.47	-524.0	1,483.1	414.7	344.9	69.81	5.940										
9,000.0	7,404.0	8,736.0	7,181.0	45.0	43.7	-57.47	-524.0	1,583.1	414.7	340.9	73.80	5.619										
9,100.0	7,404.0	8,836.0	7,181.0	47.2	46.1	-57.47	-524.0	1,683.1	414.7	336.9	77.80	5.330										
9,200.0	7,404.0	8,936.0	7,181.0	49.6	48.4	-57.47	-524.0	1,783.1	414.7	332.9	81.83	5.068										
9,300.0	7,404.0	9,036.0	7,181.0	51.9	50.8	-57.47	-524.0	1,883.1	414.7	328.8	85.86	4.830										
9,400.0	7,404.0	9,136.0	7,181.0	54.2	53.2	-57.47	-524.0	1,983.1	414.7	324.8	89.91	4.612										
9,500.0	7,404.0	9,236.0	7,181.0	56.6	55.6	-57.47	-524.0	2,083.1	414.7	320.7	93.97	4.413										
9,600.0	7,404.0	9,336.0	7,181.0	58.9	58.0	-57.47	-524.0	2,183.1	414.7	316.7	98.04	4.230										
9,700.0	7,404.0	9,436.0	7,181.0	61.3	60.4	-57.47	-524.0	2,283.1	414.7	312.6	102.12	4.061										
9,800.0	7,404.0	9,536.0	7,181.0	63.7	62.8	-57.47	-524.0	2,383.1	414.7	308.5	106.21	3.905										
9,900.0	7,404.0	9,636.0	7,181.0	66.1	65.2	-57.47	-524.0	2,483.1	414.7	304.4	110.31	3.760										
10,000.0	7,404.0	9,736.0	7,181.0	68.5	67.6	-57.47	-524.0	2,583.1	414.7	300.3	114.41	3.625										
10,100.0	7,404.0	9,836.0	7,181.0	70.9	70.0	-57.47	-524.0	2,683.1	414.7	296.2	118.51	3.499										

CC - Min centre to center distance or convergent point, SF - min separation factor, ES - min ellipse separation

Anticollision Report

Company:	EnCana Oil & Gas (USA) Inc	Local Co-ordinate Reference:	Well State 3G-16H
Project:	DJ Wattenberg	TVD Reference:	WELL @ 5072.0ft (Original Well Elev)
Reference Site:	S16-T3N-R68W (State)	MD Reference:	WELL @ 5072.0ft (Original Well Elev)
Site Error:	0.0ft	North Reference:	True
Reference Well:	State 3G-16H	Survey Calculation Method:	Minimum Curvature
Well Error:	0.0ft	Output errors are at	2.00 sigma
Reference Wellbore	Hz	Database:	USA EDM 5000 Multi Users DB
Reference Design:	Plan #1	Offset TVD Reference:	Offset Datum

Offset Design													Offset Site Error:	0.0 ft	
Survey Program: 0-MWD													Offset Well Error:		0.0 ft
Reference															
Offset				Semi Major Axis			Distance								
Measured Depth (ft)	Vertical Depth (ft)	Measured Depth (ft)	Vertical Depth (ft)	Reference (ft)	Offset (ft)	Highside Toolface (°)	Offset Wellbore Centre +N/-S (ft)	+E/-W (ft)	Between Centres (ft)	Between Ellipses (ft)	Total Uncertainty Axis	Separation Factor	Warning		
10,200.0	7,404.0	9,936.0	7,181.0	73.3	72.5	-57.47	-524.0	2,783.1	414.7	292.1	122.62	3.382			
10,300.0	7,404.0	10,036.0	7,181.0	75.7	74.9	-57.47	-524.1	2,883.1	414.7	288.0	126.74	3.272			
10,400.0	7,404.0	10,136.0	7,181.0	78.1	77.3	-57.47	-524.1	2,983.1	414.7	283.9	130.86	3.169			
10,500.0	7,404.0	10,236.0	7,181.0	80.5	79.8	-57.47	-524.1	3,083.1	414.7	279.8	134.98	3.073			
10,600.0	7,404.0	10,336.0	7,181.0	82.9	82.2	-57.47	-524.1	3,183.1	414.7	275.6	139.10	2.981			
10,700.0	7,404.0	10,436.0	7,181.0	85.3	84.6	-57.47	-524.1	3,283.1	414.7	271.5	143.23	2.896			
10,800.0	7,404.0	10,536.0	7,181.0	87.8	87.1	-57.47	-524.1	3,383.1	414.7	267.4	147.37	2.814			
10,900.0	7,404.0	10,636.0	7,181.0	90.2	89.5	-57.47	-524.1	3,483.1	414.7	263.2	151.50	2.738			
11,000.0	7,404.0	10,736.0	7,181.0	92.6	92.0	-57.47	-524.1	3,583.1	414.7	259.1	155.64	2.665			
11,100.0	7,404.0	10,836.0	7,181.0	95.0	94.4	-57.47	-524.1	3,683.1	414.7	255.0	159.78	2.596			
11,200.0	7,404.0	10,936.0	7,181.0	97.5	96.9	-57.47	-524.1	3,783.1	414.7	250.8	163.92	2.530			
11,300.0	7,404.0	11,036.0	7,181.0	99.9	99.3	-57.47	-524.1	3,883.1	414.7	246.7	168.06	2.468			
11,400.0	7,404.0	11,136.0	7,181.0	102.4	101.8	-57.47	-524.1	3,983.1	414.8	242.5	172.20	2.408			
11,500.0	7,404.0	11,236.0	7,181.0	104.8	104.2	-57.47	-524.1	4,083.1	414.8	238.4	176.35	2.352			
11,600.0	7,404.0	11,336.0	7,181.0	107.2	106.7	-57.48	-524.1	4,183.1	414.8	234.3	180.50	2.298			
11,700.0	7,404.0	11,436.0	7,181.0	109.7	109.1	-57.48	-524.1	4,283.1	414.8	230.1	184.65	2.246			
11,800.0	7,404.0	11,536.0	7,181.0	112.1	111.6	-57.48	-524.1	4,383.1	414.8	226.0	188.80	2.197			
11,900.0	7,404.0	11,636.0	7,181.0	114.6	114.0	-57.48	-524.1	4,483.1	414.8	221.8	192.95	2.150			
11,941.0	7,404.0	11,677.0	7,181.0	115.6	115.0	-57.48	-524.1	4,524.1	414.8	220.1	194.65	2.131			
11,971.5	7,404.0	11,704.6	7,181.0	116.3	115.7	-57.48	-524.1	4,551.7	414.8	218.9	195.86	2.118 SF			

Anticollision Report

Company:	EnCana Oil & Gas (USA) Inc	Local Co-ordinate Reference:	Well State 3G-16H
Project:	DJ Wattenberg	TVD Reference:	WELL @ 5072.0ft (Original Well Elev)
Reference Site:	S16-T3N-R68W (State)	MD Reference:	WELL @ 5072.0ft (Original Well Elev)
Site Error:	0.0ft	North Reference:	True
Reference Well:	State 3G-16H	Survey Calculation Method:	Minimum Curvature
Well Error:	0.0ft	Output errors are at	2.00 sigma
Reference Wellbore	Hz	Database:	USA EDM 5000 Multi Users DB
Reference Design:	Plan #1	Offset TVD Reference:	Offset Datum

Offset Design S16-T3N-R68W (State) - State 3H-16H - Hz - Plan #1													Offset Site Error:	0.0 ft
Survey Program: 0-MWD													Offset Well Error:	0.0 ft
Reference		Offset		Semi Major Axis			Distance				Total Uncertainty Axis	Separation Factor	Warning	
Measured Depth (ft)	Vertical Depth (ft)	Measured Depth (ft)	Vertical Depth (ft)	Reference (ft)	Offset (ft)	Highside Toolface (°)	Offset Wellbore Centre +N/-S (ft)	+E/-W (ft)	Between Centres (ft)	Between Ellipses (ft)				
0.0	0.0	0.0	0.0	0.0	0.0	-180.00	-7.3	0.0	7.3					
100.0	100.0	100.0	100.0	0.2	0.2	-180.00	-7.3	0.0	7.3	7.0	0.30	23.991		
200.0	200.0	200.0	200.0	0.3	0.3	-180.00	-7.3	0.0	7.3	6.6	0.65	11.161	CC, ES	
300.0	300.0	299.9	299.9	0.5	0.5	-178.85	-8.1	-0.2	8.1	7.1	1.00	8.129		
400.0	400.0	399.7	399.7	0.7	0.7	-12.50	-10.7	-0.7	9.9	8.5	1.35	7.313		
500.0	500.0	499.5	499.4	0.9	0.9	-12.17	-15.0	-1.5	11.6	9.9	1.70	6.844		
600.0	599.9	599.3	598.9	1.0	1.1	-12.46	-20.9	-2.6	13.4	11.4	2.05	6.542		
700.0	699.7	699.0	698.4	1.2	1.3	-13.15	-28.6	-4.1	15.2	12.8	2.40	6.334		
800.0	799.4	798.7	797.6	1.4	1.5	-14.11	-38.0	-5.9	17.0	14.3	2.75	6.182		
900.0	898.9	898.4	896.7	1.7	1.8	-15.26	-49.0	-8.0	18.9	15.7	3.11	6.066		
1,000.0	998.3	998.0	995.4	1.9	2.0	-16.54	-61.8	-10.4	20.7	17.3	3.47	5.973		
1,100.0	1,097.4	1,097.6	1,094.0	2.2	2.3	-17.92	-76.2	-13.2	22.6	18.8	3.84	5.893		
1,200.0	1,196.3	1,197.2	1,192.2	2.5	2.7	-19.36	-92.3	-16.3	24.6	20.4	4.23	5.819		
1,300.0	1,294.9	1,296.8	1,290.1	2.8	3.0	-20.85	-110.1	-19.7	26.6	22.0	4.63	5.746		
1,400.0	1,393.3	1,396.3	1,387.6	3.1	3.4	-22.36	-129.5	-23.4	28.6	23.6	5.05	5.670		
1,500.0	1,491.2	1,495.8	1,484.8	3.5	3.8	-23.89	-150.6	-27.5	30.7	25.2	5.50	5.587		
1,600.0	1,589.1	1,595.2	1,581.5	3.9	4.2	-24.79	-173.3	-31.8	33.7	27.7	5.97	5.648		
1,700.0	1,686.9	1,694.5	1,677.6	4.3	4.7	-24.61	-197.6	-36.5	38.3	31.9	6.40	5.978		
1,800.0	1,784.7	1,794.3	1,774.0	4.7	5.1	-24.02	-223.0	-41.3	43.7	36.9	6.82	6.415		
1,900.0	1,882.5	1,894.2	1,870.5	5.0	5.6	-23.56	-248.4	-46.2	49.2	42.0	7.24	6.800		
2,000.0	1,980.3	1,994.0	1,966.9	5.4	6.1	-23.20	-273.8	-51.1	54.7	47.1	7.66	7.143		
2,100.0	2,078.1	2,093.9	2,063.4	5.8	6.5	-22.90	-299.1	-55.9	60.2	52.1	8.08	7.449		
2,200.0	2,175.9	2,193.7	2,159.8	6.2	7.0	-22.65	-324.5	-60.8	65.7	57.2	8.51	7.724		
2,300.0	2,273.8	2,293.6	2,256.3	6.6	7.5	-22.44	-349.9	-65.7	71.2	62.3	8.93	7.973		
2,400.0	2,371.6	2,393.4	2,352.7	7.0	7.9	-22.26	-375.3	-70.5	76.7	67.3	9.35	8.199		
2,500.0	2,469.4	2,493.3	2,449.2	7.4	8.4	-22.10	-400.7	-75.4	82.2	72.4	9.78	8.405		
2,600.0	2,567.2	2,593.1	2,545.6	7.8	8.9	-21.97	-426.1	-80.3	87.7	77.5	10.20	8.593		
2,700.0	2,665.0	2,693.0	2,642.1	8.2	9.4	-21.85	-451.4	-85.1	93.2	82.5	10.63	8.766		
2,800.0	2,762.8	2,792.8	2,738.5	8.6	9.9	-21.74	-476.8	-90.0	98.6	87.6	11.05	8.925		
2,900.0	2,860.7	2,892.7	2,835.0	9.0	10.3	-21.64	-502.2	-94.9	104.1	92.7	11.48	9.073		
3,000.0	2,958.5	2,992.5	2,931.4	9.4	10.8	-21.56	-527.6	-99.7	109.6	97.7	11.90	9.210		
3,100.0	3,056.3	3,092.4	3,027.9	9.8	11.3	-21.48	-553.0	-104.6	115.1	102.8	12.33	9.337		
3,200.0	3,154.1	3,192.2	3,124.3	10.2	11.8	-21.41	-578.3	-109.5	120.6	107.9	12.76	9.455		
3,300.0	3,251.9	3,292.1	3,220.7	10.6	12.3	-21.34	-603.7	-114.3	126.1	112.9	13.18	9.566		
3,400.0	3,349.7	3,391.9	3,317.2	11.0	12.7	-21.28	-629.1	-119.2	131.6	118.0	13.61	9.670		
3,500.0	3,447.5	3,491.8	3,413.6	11.4	13.2	-21.23	-654.5	-124.0	137.1	123.1	14.04	9.767		
3,600.0	3,545.4	3,591.6	3,510.1	11.8	13.7	-21.18	-679.9	-128.9	142.6	128.1	14.46	9.859		
3,700.0	3,643.2	3,691.5	3,606.5	12.2	14.2	-21.13	-705.2	-133.8	148.1	133.2	14.89	9.945		
3,800.0	3,741.0	3,791.3	3,703.0	12.6	14.7	-21.09	-730.6	-138.6	153.6	138.3	15.32	10.026		
3,900.0	3,838.8	3,891.2	3,799.4	13.0	15.1	-21.05	-756.0	-143.5	159.1	143.3	15.75	10.103		
4,000.0	3,936.6	3,991.0	3,895.9	13.4	15.6	-21.01	-781.4	-148.4	164.6	148.4	16.17	10.176		
4,100.0	4,034.4	4,090.9	3,992.3	13.8	16.1	-20.98	-806.8	-153.2	170.1	153.5	16.60	10.244		
4,200.0	4,132.2	4,190.7	4,088.8	14.2	16.6	-20.94	-832.1	-158.1	175.6	158.5	17.03	10.310		
4,300.0	4,230.1	4,290.6	4,185.2	14.6	17.1	-20.91	-857.5	-163.0	181.1	163.6	17.46	10.372		
4,400.0	4,327.9	4,390.4	4,281.7	15.0	17.6	-20.88	-882.9	-167.8	186.6	168.7	17.89	10.431		
4,500.0	4,425.7	4,490.3	4,378.1	15.4	18.0	-20.86	-908.3	-172.7	192.1	173.7	18.31	10.487		
4,600.0	4,523.5	4,590.1	4,474.6	15.8	18.5	-20.83	-933.7	-177.6	197.6	178.8	18.74	10.541		
4,700.0	4,621.4	4,689.9	4,571.0	16.2	19.0	-20.79	-959.0	-182.4	203.3	184.1	19.16	10.609		
4,800.0	4,719.6	4,789.7	4,667.3	16.6	19.5	-20.62	-984.4	-187.3	210.5	191.0	19.54	10.773		
4,900.0	4,818.0	4,889.3	4,763.5	16.9	20.0	-20.30	-1,009.7	-192.1	219.3	199.5	19.87	11.041		
5,000.0	4,916.8	4,989.3	4,860.1	17.2	20.4	-19.87	-1,035.1	-197.0	229.8	209.7	20.15	11.406		
5,100.0	5,015.9	5,092.7	4,960.3	17.5	20.9	-19.39	-1,060.3	-201.8	240.8	220.4	20.41	11.800		

CC - Min centre to center distance or convergent point, SF - min separation factor, ES - min ellipse separation

Anticollision Report

Company:	EnCana Oil & Gas (USA) Inc	Local Co-ordinate Reference:	Well State 3G-16H
Project:	DJ Wattenberg	TVD Reference:	WELL @ 5072.0ft (Original Well Elev)
Reference Site:	S16-T3N-R68W (State)	MD Reference:	WELL @ 5072.0ft (Original Well Elev)
Site Error:	0.0ft	North Reference:	True
Reference Well:	State 3G-16H	Survey Calculation Method:	Minimum Curvature
Well Error:	0.0ft	Output errors are at	2.00 sigma
Reference Wellbore	Hz	Database:	USA EDM 5000 Multi Users DB
Reference Design:	Plan #1	Offset TVD Reference:	Offset Datum

Offset Design													Offset Site Error:	0.0 ft								
Survey Program: 0-MWD													Offset Well Error:		0.0 ft							
Reference													Offset		Semi Major Axis		Distance				Warning	
Measured Depth (ft)	Vertical Depth (ft)	Measured Depth (ft)	Vertical Depth (ft)	Reference (ft)	Offset (ft)	Highside Toolface (°)	Offset Wellbore Centre +N/-S (ft)	+E/-W (ft)	Between Centres (ft)	Between Ellipses (ft)	Total Uncertainty Axis	Separation Factor	Warning									
5,200.0	5,115.1	5,196.4	5,061.2	17.8	21.4	-18.93	-1,083.7	-206.3	251.8	231.1	20.66	12.185										
5,300.0	5,214.6	5,300.3	5,162.8	18.0	21.8	-18.49	-1,105.4	-210.5	262.6	241.7	20.91	12.562										
5,400.0	5,314.2	5,404.4	5,264.9	18.2	22.2	-18.06	-1,125.3	-214.3	273.4	252.3	21.14	12.932										
5,500.0	5,414.0	5,508.8	5,367.6	18.4	22.5	-17.64	-1,143.4	-217.8	284.1	262.7	21.37	13.293										
5,600.0	5,513.8	5,613.3	5,470.8	18.5	22.8	-17.23	-1,159.7	-220.9	294.7	273.1	21.60	13.646										
5,700.0	5,613.8	5,718.1	5,574.6	18.7	23.1	-16.83	-1,174.2	-223.7	305.2	283.4	21.81	13.992										
5,800.0	5,713.8	5,823.1	5,678.7	18.8	23.4	-16.43	-1,186.9	-226.1	315.6	293.6	22.02	14.330										
5,900.0	5,813.8	5,928.3	5,783.4	18.9	23.6	-178.96	-1,197.7	-228.2	325.6	284.1	41.56	7.836										
6,000.0	5,913.8	6,033.9	5,888.6	19.0	23.8	179.28	-1,206.6	-229.9	334.1	292.2	41.91	7.972										
6,100.0	6,013.8	6,139.8	5,994.2	19.0	24.0	179.52	-1,213.6	-231.2	340.7	298.5	42.22	8.071										
6,200.0	6,113.8	6,245.9	6,100.2	19.1	24.2	179.69	-1,218.7	-232.2	345.5	303.1	42.49	8.133										
6,300.0	6,213.8	6,352.2	6,206.4	19.2	24.3	179.80	-1,222.0	-232.8	348.6	305.8	42.72	8.159										
6,400.0	6,313.8	6,458.5	6,312.8	19.3	24.4	179.84	-1,223.2	-233.1	349.7	306.8	42.92	8.148										
6,500.0	6,413.8	6,559.5	6,413.8	19.4	24.5	179.84	-1,223.2	-233.1	349.8	306.7	43.11	8.113										
6,544.7	6,458.4	6,604.2	6,458.4	19.5	24.5	179.84	-1,223.2	-233.1	349.8	306.6	43.20	8.097										
6,600.0	6,513.8	6,659.4	6,513.6	19.5	24.5	179.57	-1,223.2	-231.4	349.8	306.5	43.27	8.084										
6,700.0	6,613.8	6,757.2	6,610.4	19.7	24.6	177.39	-1,223.2	-218.1	350.1	307.0	43.18	8.110										
6,800.0	6,713.8	6,850.0	6,699.8	19.8	24.6	83.37	-1,223.2	-193.4	352.3	326.0	26.31	13.394										
6,900.0	6,813.1	6,938.7	6,781.6	19.8	24.6	78.94	-1,223.3	-159.2	356.9	329.5	27.44	13.006										
7,000.0	6,910.0	7,024.8	6,856.4	19.8	24.6	74.84	-1,223.3	-116.5	363.3	335.1	28.20	12.880										
7,100.0	7,002.6	7,108.7	6,923.8	19.8	24.6	71.13	-1,223.3	-66.7	370.8	342.3	28.47	13.023										
7,200.0	7,089.1	7,190.7	6,983.6	19.8	24.7	67.86	-1,223.3	-10.6	378.9	350.6	28.31	13.383										
7,300.0	7,167.7	7,271.2	7,035.6	19.9	24.8	65.04	-1,223.3	50.6	387.0	359.3	27.74	13.951										
7,400.0	7,237.1	7,350.0	7,079.7	20.0	24.9	62.68	-1,223.3	115.9	394.7	367.6	27.10	14.565										
7,500.0	7,295.7	7,428.5	7,116.2	20.2	25.2	60.77	-1,223.3	185.4	401.6	374.8	26.78	14.997										
7,600.0	7,342.5	7,505.9	7,144.5	20.6	25.5	59.31	-1,223.3	257.4	407.2	380.1	27.12	15.015										
7,700.0	7,376.5	7,582.8	7,164.8	21.2	26.0	58.28	-1,223.3	331.5	411.4	383.0	28.48	14.446										
7,800.0	7,397.2	7,659.2	7,176.9	22.1	26.5	57.67	-1,223.3	407.0	414.0	383.0	30.95	13.378										
7,900.0	7,404.0	7,735.5	7,181.0	23.3	27.1	57.48	-1,223.3	483.1	414.8	380.4	34.40	12.059										
7,937.5	7,404.0	7,773.0	7,181.0	23.8	27.5	57.48	-1,223.3	520.6	414.8	379.2	35.56	11.664										
8,000.0	7,404.0	7,835.5	7,181.0	24.7	28.2	57.48	-1,223.3	583.1	414.8	377.3	37.53	11.052										
8,100.0	7,404.0	7,935.5	7,181.0	26.3	29.4	57.48	-1,223.3	683.1	414.8	374.0	40.84	10.156										
8,200.0	7,404.0	8,035.5	7,181.0	28.0	30.9	57.48	-1,223.3	783.1	414.8	370.5	44.30	9.363										
8,300.0	7,404.0	8,135.5	7,181.0	29.9	32.4	57.48	-1,223.3	883.1	414.8	366.9	47.88	8.664										
8,400.0	7,404.0	8,235.5	7,181.0	31.9	34.2	57.48	-1,223.3	983.1	414.8	363.3	51.54	8.048										
8,500.0	7,404.0	8,335.5	7,181.0	33.9	36.0	57.48	-1,223.3	1,083.1	414.8	359.5	55.28	7.503										
8,600.0	7,404.0	8,435.5	7,181.0	36.1	38.0	57.48	-1,223.3	1,183.1	414.8	355.7	59.08	7.021										
8,700.0	7,404.0	8,535.5	7,181.0	38.2	40.0	57.48	-1,223.3	1,283.1	414.8	351.9	62.92	6.592										
8,800.0	7,404.0	8,635.5	7,181.0	40.4	42.0	57.48	-1,223.4	1,383.1	414.8	348.0	66.81	6.209										
8,900.0	7,404.0	8,735.5	7,181.0	42.7	44.2	57.48	-1,223.4	1,483.1	414.8	344.1	70.73	5.865										
9,000.0	7,404.0	8,835.5	7,181.0	45.0	46.3	57.48	-1,223.4	1,583.1	414.8	340.1	74.68	5.555										
9,100.0	7,404.0	8,935.5	7,181.0	47.2	48.5	57.48	-1,223.4	1,683.1	414.8	336.1	78.65	5.274										
9,200.0	7,404.0	9,035.5	7,181.0	49.6	50.8	57.48	-1,223.4	1,783.1	414.8	332.2	82.64	5.019										
9,300.0	7,404.0	9,135.5	7,181.0	51.9	53.0	57.48	-1,223.4	1,883.1	414.8	328.1	86.65	4.787										
9,400.0	7,404.0	9,235.5	7,181.0	54.2	55.3	57.48	-1,223.4	1,983.1	414.8	324.1	90.67	4.575										
9,500.0	7,404.0	9,335.5	7,181.0	56.6	57.6	57.48	-1,223.4	2,083.1	414.8	320.1	94.71	4.380										
9,600.0	7,404.0	9,435.5	7,181.0	58.9	59.9	57.48	-1,223.4	2,183.1	414.8	316.0	98.76	4.200										
9,700.0	7,404.0	9,535.5	7,181.0	61.3	62.2	57.48	-1,223.4	2,283.1	414.8	312.0	102.82	4.034										
9,800.0	7,404.0	9,635.5	7,181.0	63.7	64.6	57.48	-1,223.4	2,383.1	414.8	307.9	106.89	3.881										
9,900.0	7,404.0	9,735.5	7,181.0	66.1	66.9	57.48	-1,223.4	2,483.1	414.8	303.8	110.96	3.738										
10,000.0	7,404.0	9,835.5	7,181.0	68.5	69.3	57.48	-1,223.4	2,583.1	414.8	299.7	115.05	3.605										
10,100.0	7,404.0	9,935.5	7,181.0	70.9	71.6	57.48	-1,223.4	2,683.1	414.8	295.6	119.14	3.482										

CC - Min centre to center distance or convergent point, SF - min separation factor, ES - min ellipse separation

Anticollision Report

Company:	EnCana Oil & Gas (USA) Inc	Local Co-ordinate Reference:	Well State 3G-16H
Project:	DJ Wattenberg	TVD Reference:	WELL @ 5072.0ft (Original Well Elev)
Reference Site:	S16-T3N-R68W (State)	MD Reference:	WELL @ 5072.0ft (Original Well Elev)
Site Error:	0.0ft	North Reference:	True
Reference Well:	State 3G-16H	Survey Calculation Method:	Minimum Curvature
Well Error:	0.0ft	Output errors are at	2.00 sigma
Reference Wellbore	Hz	Database:	USA EDM 5000 Multi Users DB
Reference Design:	Plan #1	Offset TVD Reference:	Offset Datum

Offset Design													Offset Site Error:	0.0 ft
S16-T3N-R68W (State) - State 3H-16H - Hz - Plan #1													Offset Well Error:	0.0 ft
Survey Program: 0-MWD														
Reference		Offset		Semi Major Axis			Distance							
Measured Depth (ft)	Vertical Depth (ft)	Measured Depth (ft)	Vertical Depth (ft)	Reference (ft)	Offset (ft)	Highside Toolface (°)	Offset Wellbore Centre +N/-S (ft)	+E/-W (ft)	Between Centres (ft)	Between Ellipses (ft)	Total Uncertainty Axis	Separation Factor	Warning	
10,200.0	7,404.0	10,035.5	7,181.0	73.3	74.0	57.48	-1,223.4	2,783.1	414.8	291.5	123.23	3.366		
10,300.0	7,404.0	10,135.5	7,181.0	75.7	76.4	57.48	-1,223.5	2,883.1	414.8	287.4	127.34	3.257		
10,400.0	7,404.0	10,235.5	7,181.0	78.1	78.8	57.48	-1,223.5	2,983.1	414.8	283.3	131.44	3.156		
10,500.0	7,404.0	10,335.5	7,181.0	80.5	81.2	57.48	-1,223.5	3,083.1	414.8	279.2	135.55	3.060		
10,600.0	7,404.0	10,435.5	7,181.0	82.9	83.6	57.48	-1,223.5	3,183.1	414.8	275.1	139.67	2.970		
10,700.0	7,404.0	10,535.5	7,181.0	85.3	86.0	57.48	-1,223.5	3,283.1	414.8	271.0	143.79	2.885		
10,800.0	7,404.0	10,635.5	7,181.0	87.8	88.4	57.48	-1,223.5	3,383.1	414.8	266.9	147.91	2.804		
10,900.0	7,404.0	10,735.5	7,181.0	90.2	90.8	57.48	-1,223.5	3,483.1	414.8	262.7	152.03	2.728		
11,000.0	7,404.0	10,835.5	7,181.0	92.6	93.2	57.48	-1,223.5	3,583.1	414.8	258.6	156.16	2.656		
11,100.0	7,404.0	10,935.5	7,181.0	95.0	95.6	57.48	-1,223.5	3,683.1	414.8	254.5	160.29	2.588		
11,200.0	7,404.0	11,035.5	7,181.0	97.5	98.0	57.48	-1,223.5	3,783.1	414.8	250.3	164.42	2.523		
11,300.0	7,404.0	11,135.5	7,181.0	99.9	100.5	57.48	-1,223.5	3,883.1	414.8	246.2	168.56	2.461		
11,400.0	7,404.0	11,235.5	7,181.0	102.4	102.9	57.48	-1,223.5	3,983.1	414.8	242.1	172.69	2.402		
11,500.0	7,404.0	11,335.5	7,181.0	104.8	105.3	57.48	-1,223.5	4,083.1	414.8	237.9	176.83	2.346		
11,600.0	7,404.0	11,435.5	7,181.0	107.2	107.7	57.48	-1,223.5	4,183.1	414.8	233.8	180.97	2.292		
11,700.0	7,404.0	11,535.5	7,181.0	109.7	110.2	57.48	-1,223.6	4,283.1	414.8	229.6	185.12	2.241		
11,800.0	7,404.0	11,635.5	7,181.0	112.1	112.6	57.48	-1,223.6	4,383.1	414.8	225.5	189.26	2.192		
11,900.0	7,404.0	11,735.5	7,181.0	114.6	115.0	57.48	-1,223.6	4,483.1	414.8	221.4	193.41	2.145		
11,971.5	7,404.0	11,807.0	7,181.0	116.3	116.8	57.48	-1,223.6	4,554.6	414.8	218.4	196.37	2.112 SF		

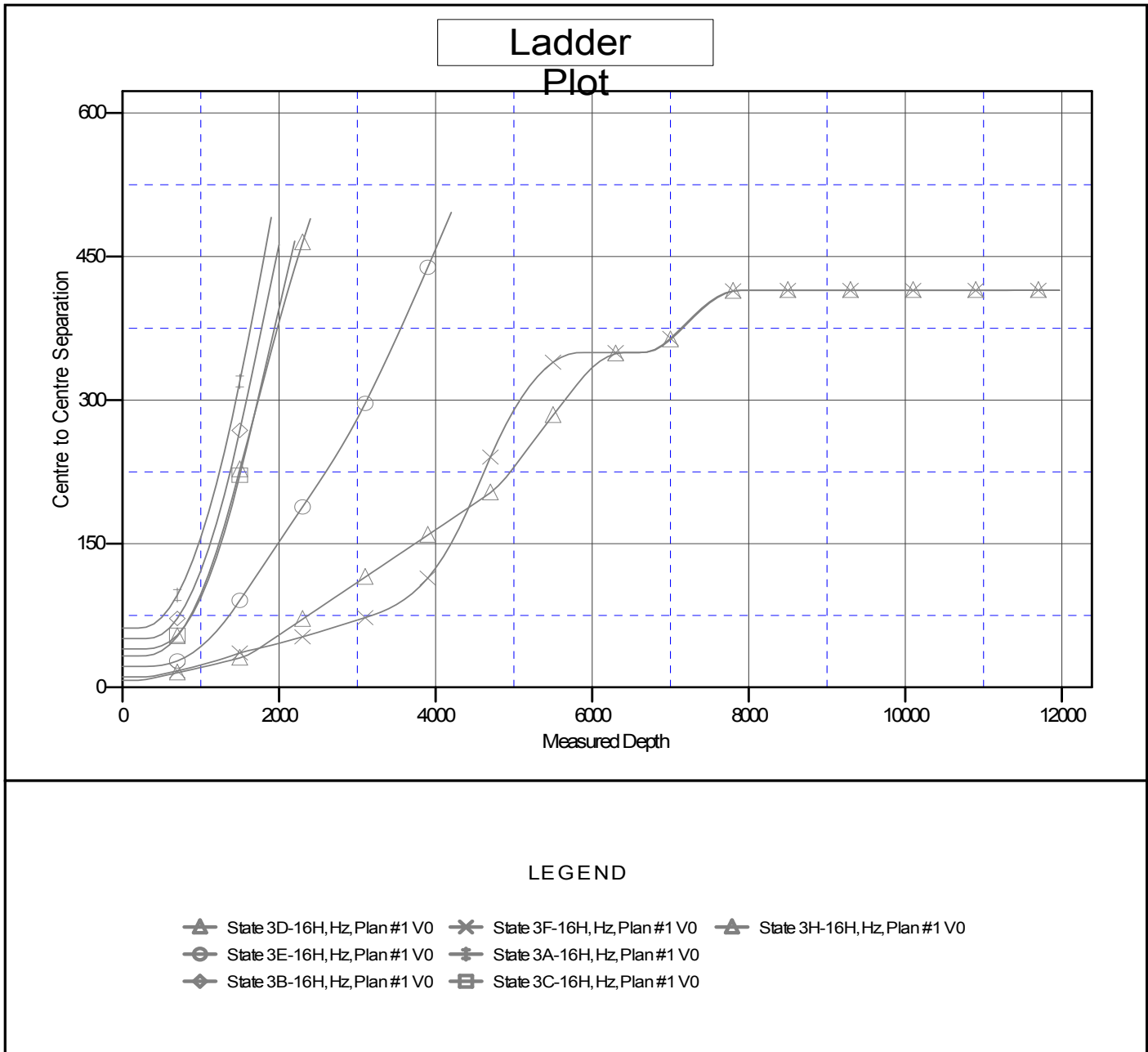
CC - Min centre to center distance or convergent point, SF - min separation factor, ES - min ellipse separation

Anticollision Report

Company: EnCana Oil & Gas (USA) Inc	Local Co-ordinate Reference: Well State 3G-16H	
Project: DJ Wattenberg	TVD Reference: WELL @ 5072.0ft (Original Well Elev)	
Reference Site: S16-T3N-R68W (State)	MD Reference: WELL @ 5072.0ft (Original Well Elev)	
Site Error: 0.0ft	North Reference: True	
Reference Well: State 3G-16H	Survey Calculation Method: Minimum Curvature	
Well Error: 0.0ft	Output errors are at 2.00 sigma	
Reference Wellbore Hz	Database: USA EDM 5000 Multi Users DB	
Reference Design: Plan #1	Offset TVD Reference: Offset Datum	

Reference Depths are relative to WELL @ 5072.0ft (Original Well Elev)
 Offset Depths are relative to Offset Datum
 Central Meridian is -105.500000 °

Coordinates are relative to: State 3G-16H
 Coordinate System is US State Plane 1983, Colorado Northern Zone
 Grid Convergence at Surface is: 0.31°



CC - Min centre to center distance or convergent point, SF - min separation factor, ES - min ellipse separation