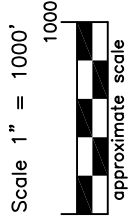
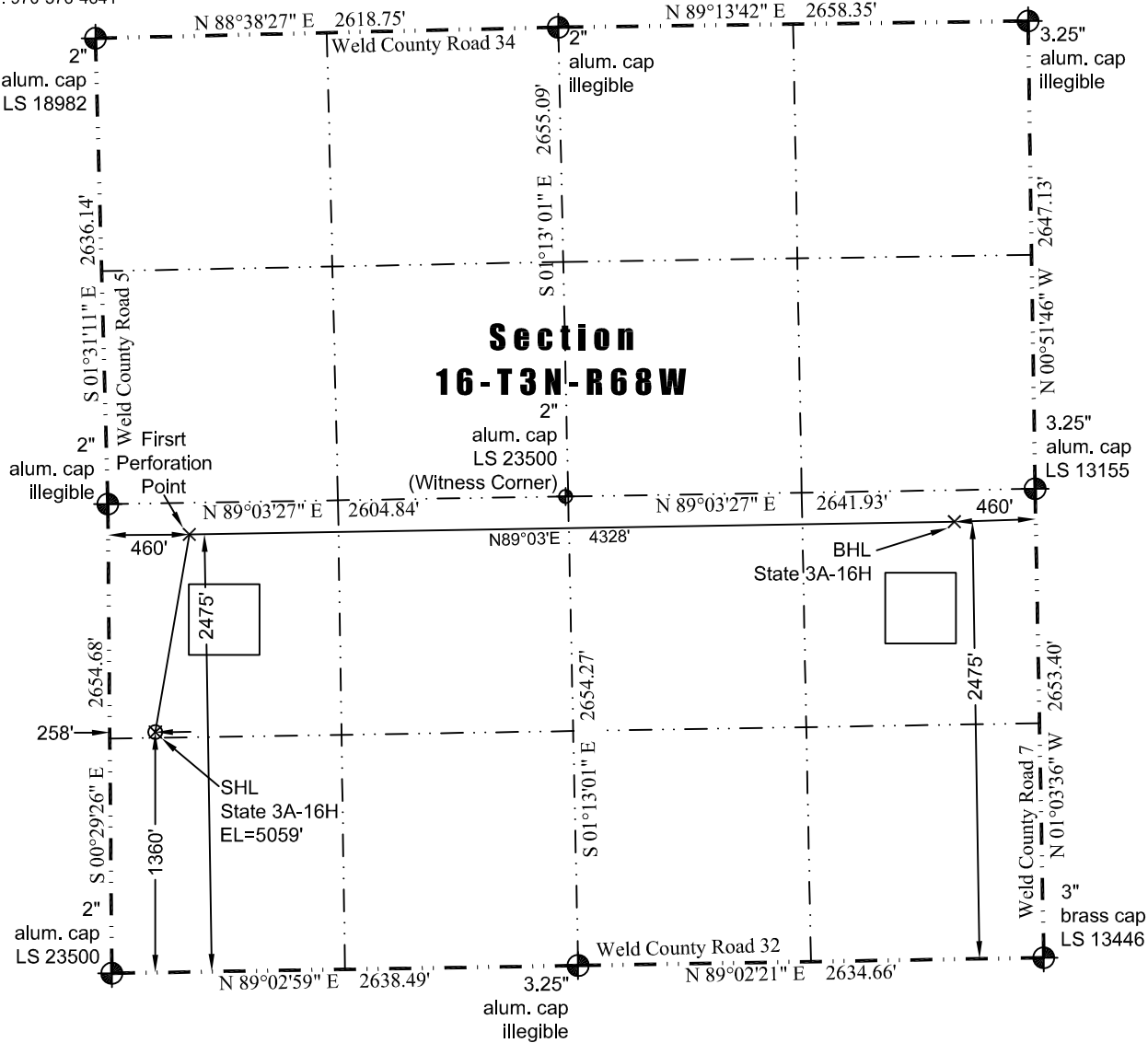


JR Land Surveying, LLC
 8114 Northstar Drive
 Windsor, Colorado 80528
 P. 970-576-4641

WELL LOCATION CERTIFICATE

THIS MAP DOES NOT REPRESENT A BOUNDARY SURVEY



LEGEND
 — found survey monument
 - - - calculated dimension
 (c)

In accordance with a request from Jay Knutson of EnCana Oil & Gas (USA) Inc., JR Land Surveying, LLC has determined the location of the **State 3A-16H** well site to be SHL: 1360' FSL and 258' FWL, (BHL: 2475' FSL and 460' FEL), (First Perforation Point: 2475' FSL and 460' FWL) as measured at ninety (90) degrees from the section lines of Sections 16, Township 3 North, Range 68 West of the 6th Principal Meridian, Weld County Colorado.

Proposed Surface Hole Data:

Latitude: N 40.22226° (BHL: 40.22546°) & (First Perforation Point: 40.22533°)
 Longitude: W 105.01640° (BHL: 105.00018°) & (First Perforation Point: 105.01568°)
 PDOP: 1.8

Nearest:

Building: 772' northwest	Above Ground Utility: 231' west
Public Road: 245' west	Railroad: 2,909' southeast
Property Line: 258' west	Well Window: SHL is 477' outside
Existing Well: Runyan #1, 1,513' southwest	

I hereby certify that this Well Location Certificate was prepared by me or under my direct supervision on 12/11/2012 for and on behalf of EnCana Oil & Gas (USA) Inc. That it is not a Land Survey Plat or an Improvement Survey Plat and that it is not to be relied upon for establishment of fences, buildings, or other future improvement lines. 38219

Notes:

- 1) Bearings and distances based on NAD 83 Colorado North State Plane Coordinate. using RTK GPS observations taken 12/7/12 by operator John Rice.
- 2) Conversion factor to ground (1.000285153).
- 3) Elevations based on NAVD 88 GPS heights and Geoid 2003 corrections.
- 4) See Location Drawing for visible improvements within 400 feet of Pad Site.
- 5) The surface use is a cultivated field.

NOTICE: According to Colorado law you must commence any legal action based upon any defect in this W.L.C. within three years after you first discover such defect. In no event may any action based upon any defect in this W.L.C. be commenced more than ten years from this said date of the certification shown hereon.

John Robert McGehee LS#38219
 Well: State 3A-16H WLC

