

# CEMENT BOND LOG



Mesa Wireline

Company ENCANA OIL & GAS (USA) INC		Company ENCANA OIL & GAS (USA) INC	
Well	IONE 4-6-8	Well	IONE 4-6-8
Field	WATTENBERG	Field	WATTENBERG
County	WELD	County	WELD
State	COLORADO	State	COLORADO
Location:		API #: 05-123-31398-0000	
SHL: 1520' FSL & 973' FEL BHL: 1350' FSL & 2590' FEL		Other Services	
SEC: 8 TWP: 2N RGE: 66W		NONE	
Permanent Datum	GROUND LEVEL	Elevation	4882'
Log Measured From	KELLY BUSHING = 13'	Elevation	K.B. 4895' D.F. 4894' G.L. 4882'
Drilling Measured From	KELLY BUSHING		

Date	5 DECEMBER 2012			
Run Number	ONE			
Depth Driller	8209'			
Depth Logger	8208'			
Bottom Logged Interval	8208'			
Top Log Interval	4000'			
Open Hole Size	7.875"			
Type Fluid	WATER			
Density / Viscosity	~8.3#			
Max. Recorded Temp.	260 DEG F			
Estimated Cement Top	4280'			
Time Well Ready	N/A			
Time Logger on Bottom	N/A			
Equipment Number	10501 PRD01			
Location	AULT, CO			
Recorded By	Z. EMICK			
Witnessed By	T. MAJORS			
Borehole Record		Tubing Record		
Run Number	Bit	From	To	Size
ONE	12.25"	0'	845'	
TWO	7.875"	845'	8245'	
Casing Record	Size	Wgt/Ft	Top	Bottom
Surface String	8.625"	24#	0'	840'
Prot. String				
Production String	4.5"	11.6#	0'	8233'
Liner				

<<< Fold Here >>>

All interpretations are opinions based on inferences from electrical or other measurements and we cannot and do not guarantee the accuracy or correctness of any interpretation, and we shall not, except in the case of gross or willful negligence on our part, be liable or responsible for any loss, costs, damages, or expenses incurred or sustained by anyone resulting from any interpretation made by any of our officers, agents or employees. These interpretations are also subject to our general terms and conditions set out in our current Price Schedule.

**Comments**

LOG NOT CORRELATED TO ANY OTHER LOG

SHORT JOINT: 7323' - 7344'

WE APPRECIATE YOUR BUSINESS, MESA WIRELINE LLC, AULT CO. (970) 834-2495



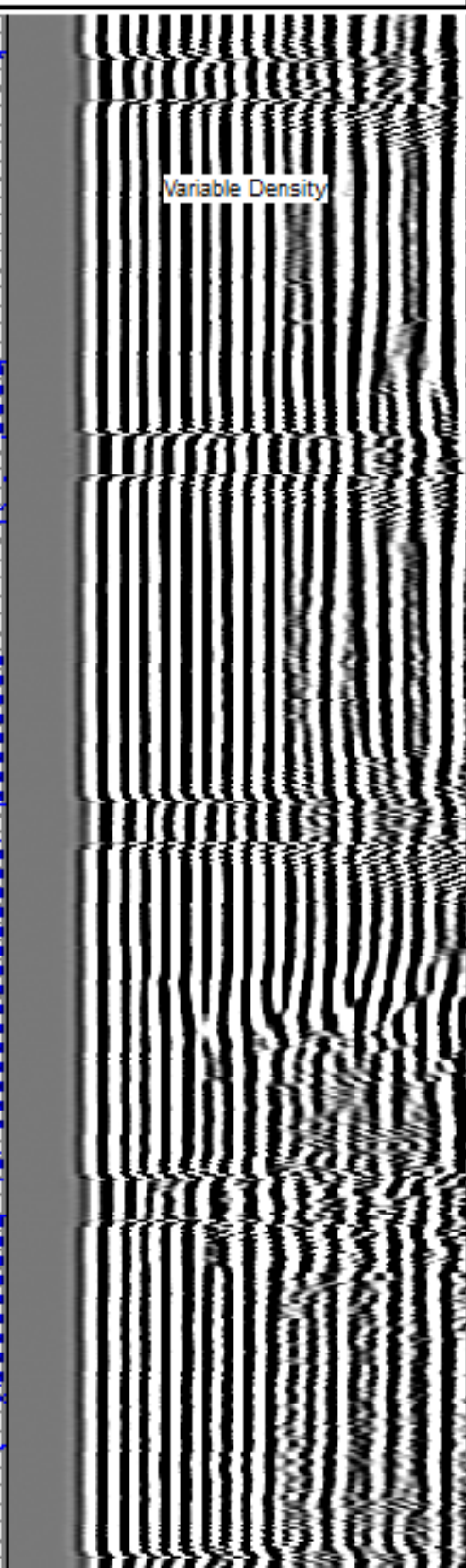
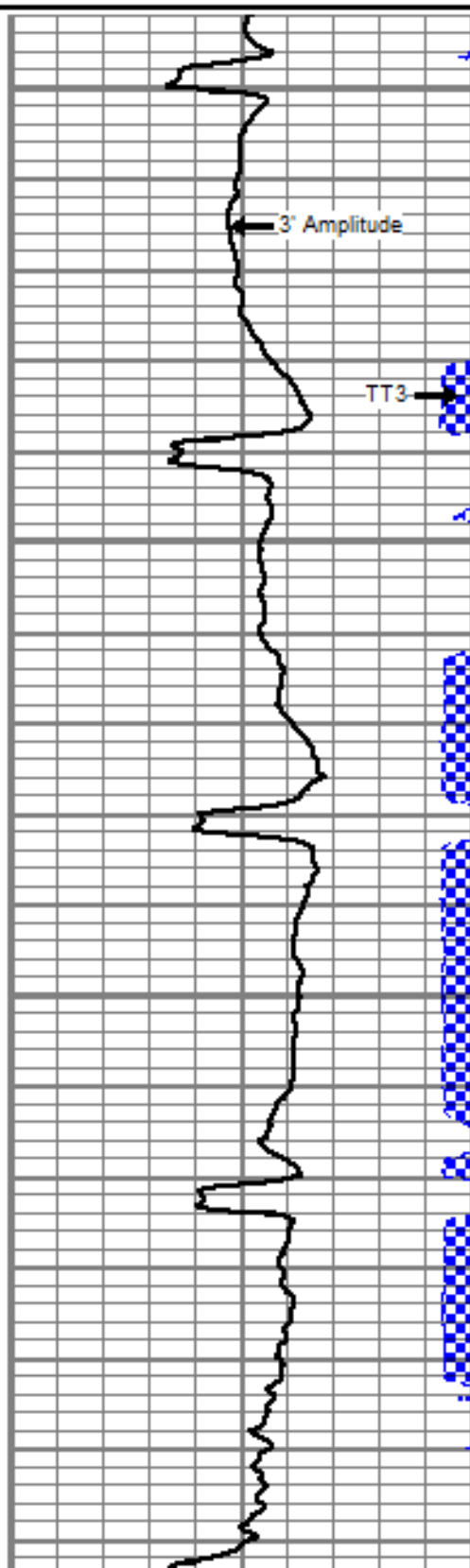
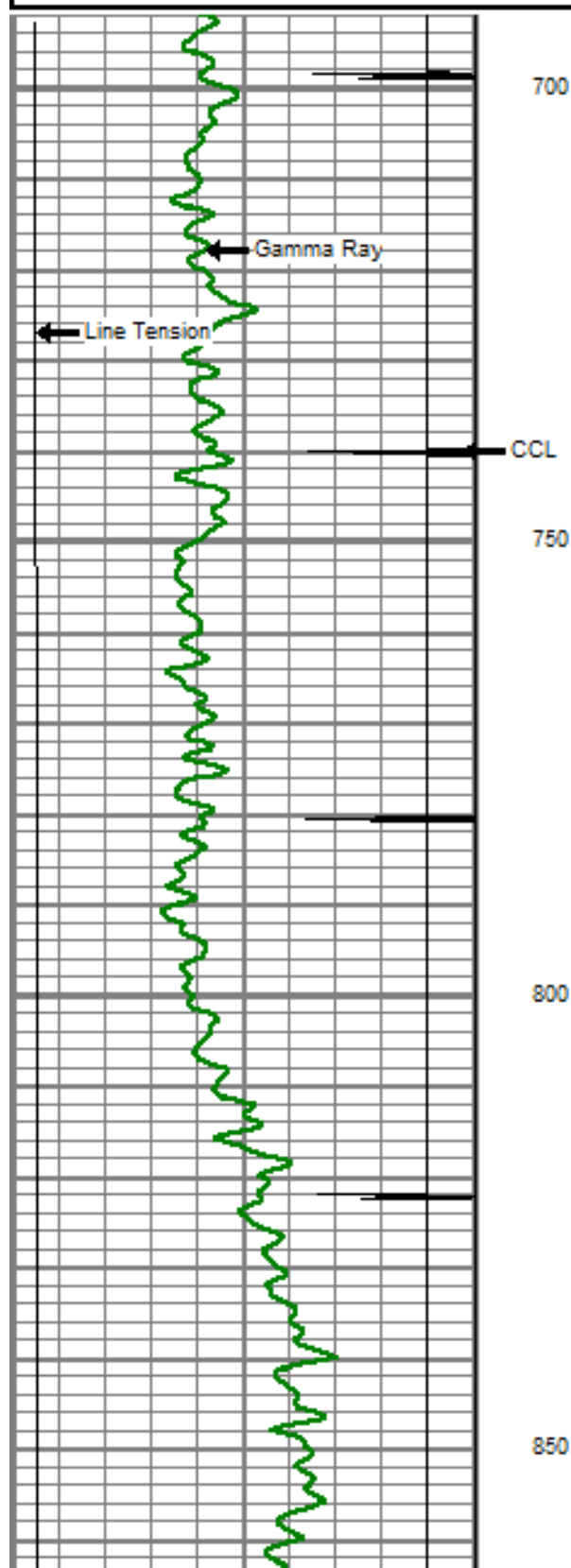
TOP PASS

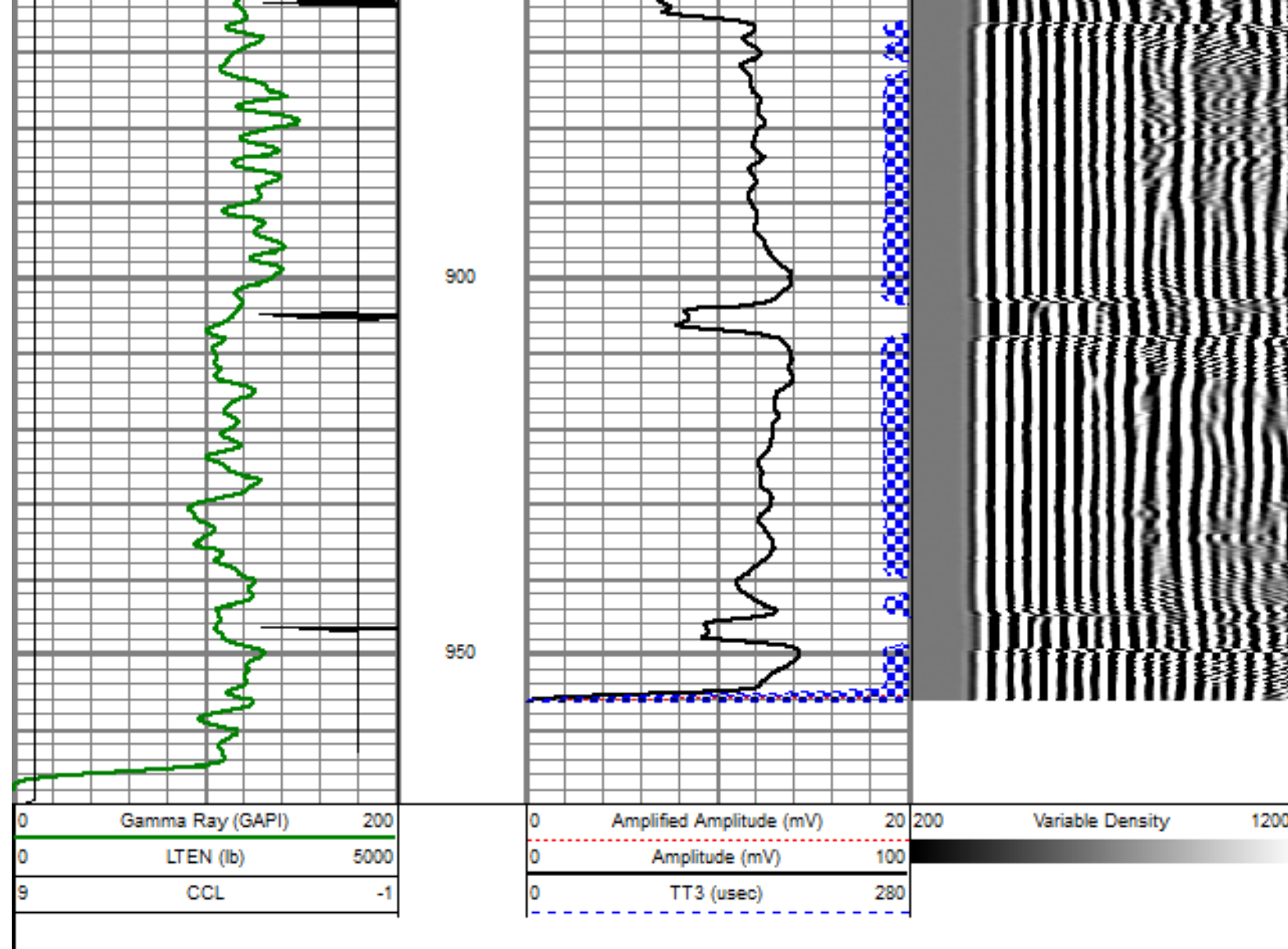
Database File: ione 4-8-8.db  
Dataset Pathname: pass4.2  
Presentation Format: dobl\_prb  
Dataset Creation: Wed Dec 05 11:27:23 2012 by Calc SCH 110930  
Charted by: Depth in Feet scaled 1:240

0	Gamma Ray (GAPI)	200
0	LTEN (lb)	5000
9	CCL	-1

0	Amplified Amplitude (mV)	20
0	Amplitude (mV)	100
0	TT3 (usec)	280

200 Variable Density 1200

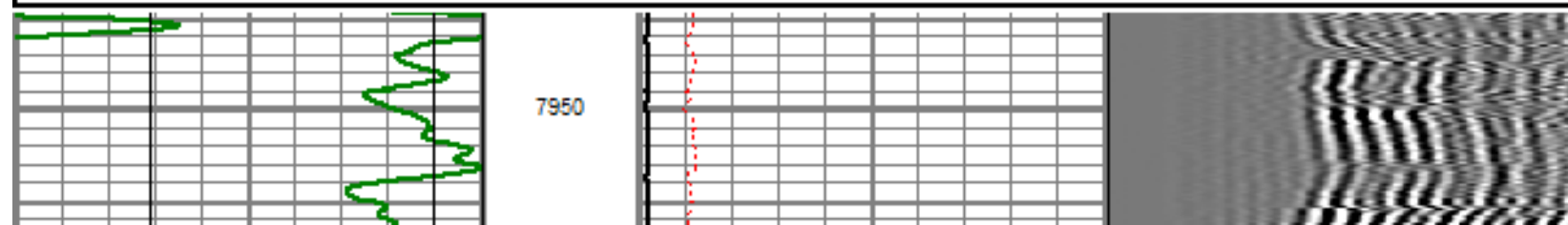
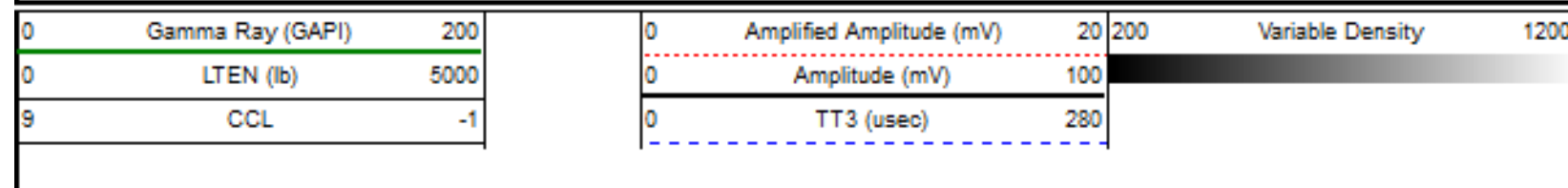




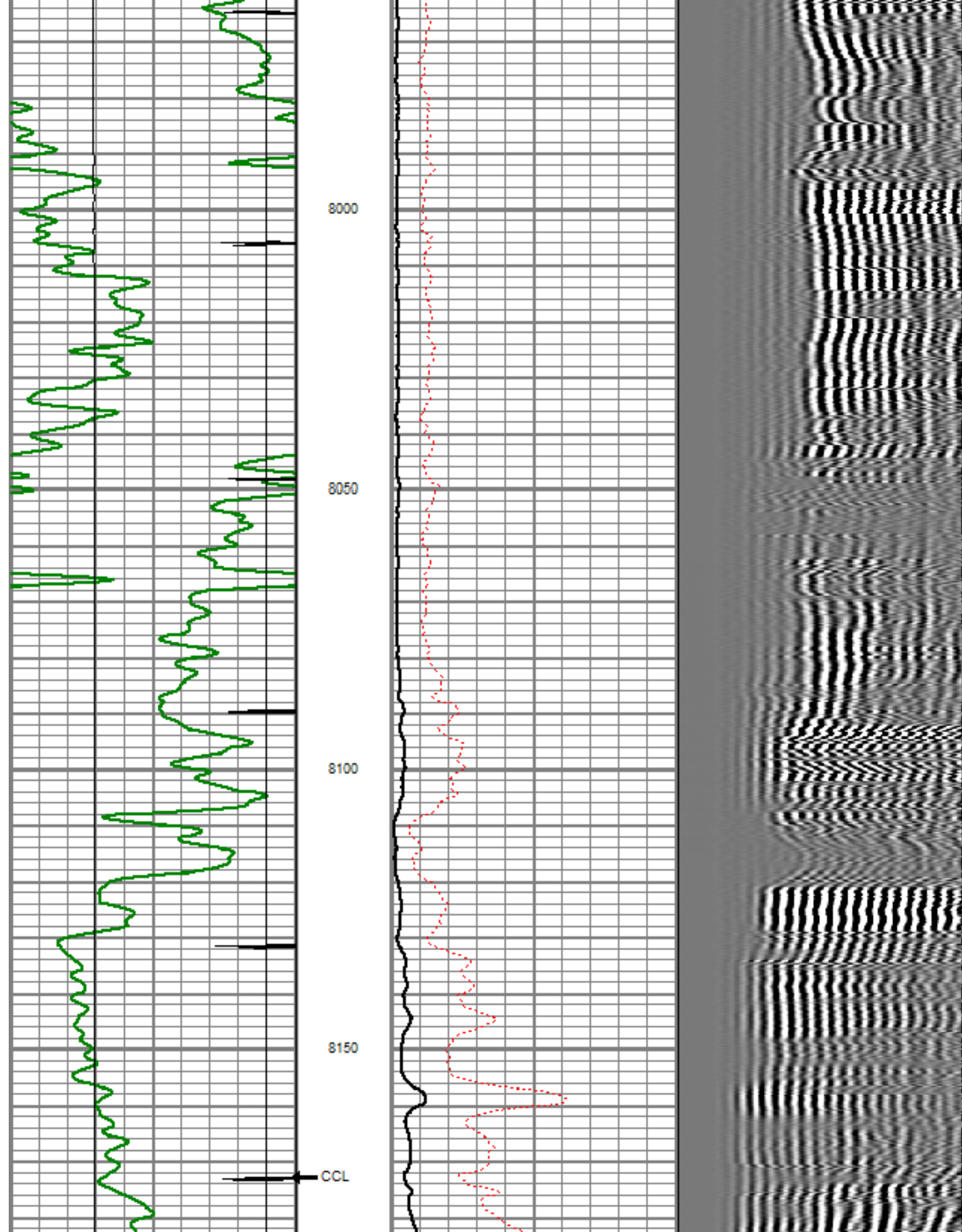
## REPEAT PASS

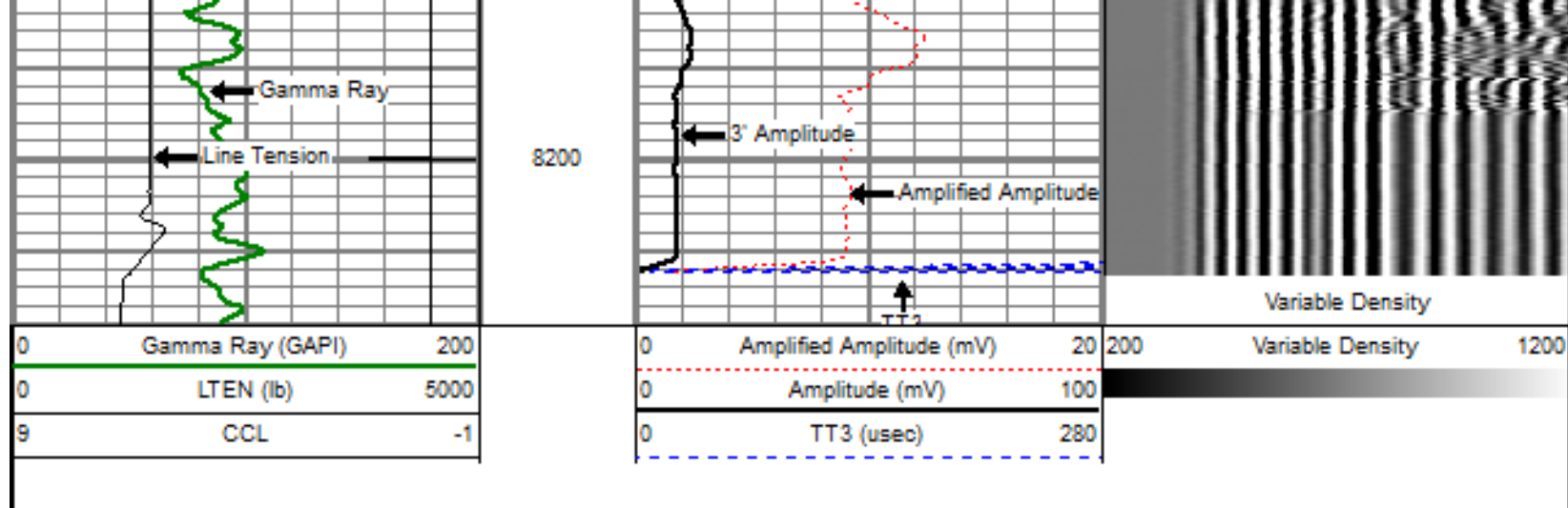
5" = 100'

Database File: ione 4-6-8.db  
 Dataset Pathname: pass2  
 Presentation Format: dobl\_prb  
 Dataset Creation: Wed Dec 05 10:01:06 2012 by Log SCH 110930  
 Charted by: Depth in Feet scaled 1:240





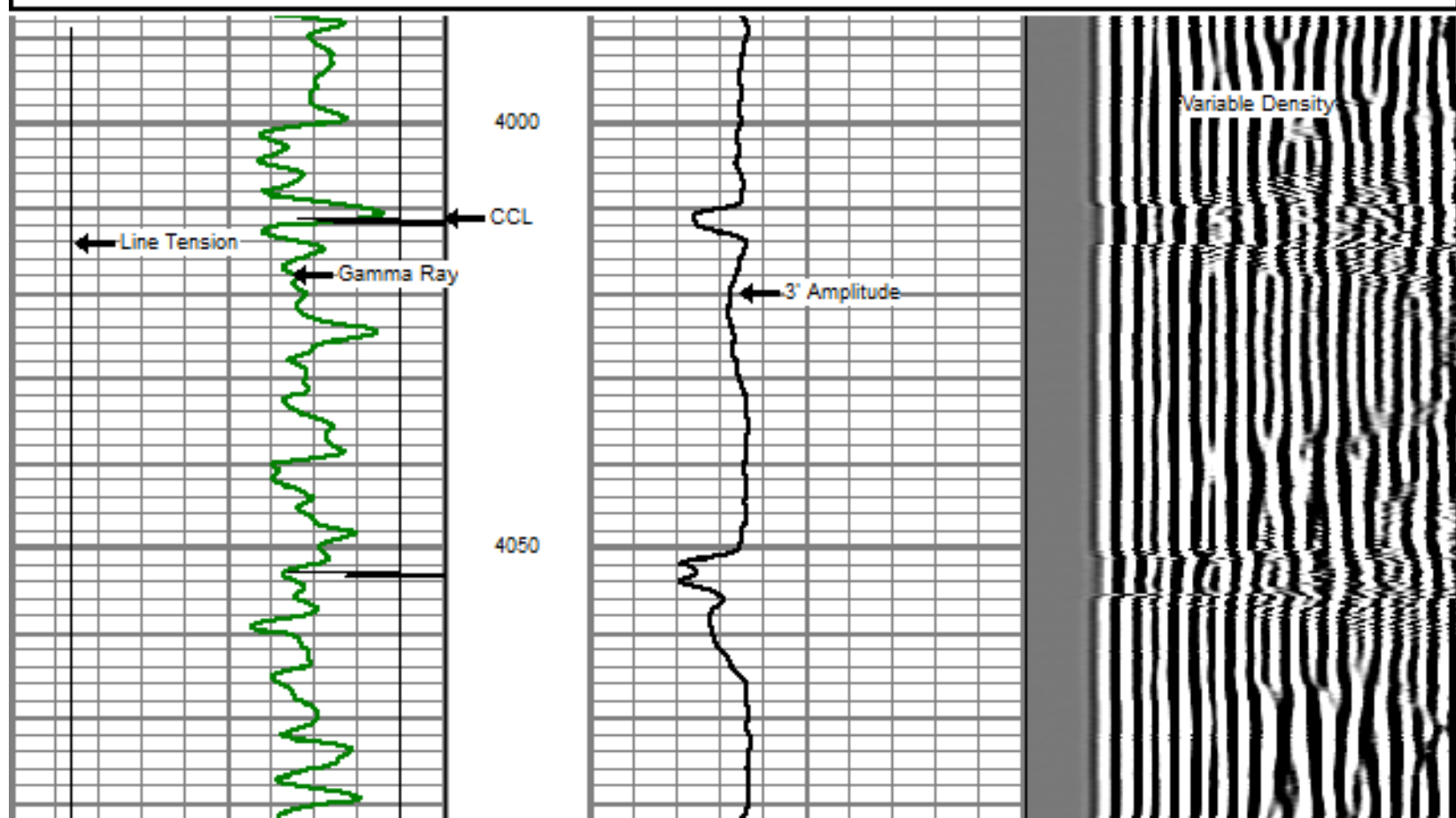
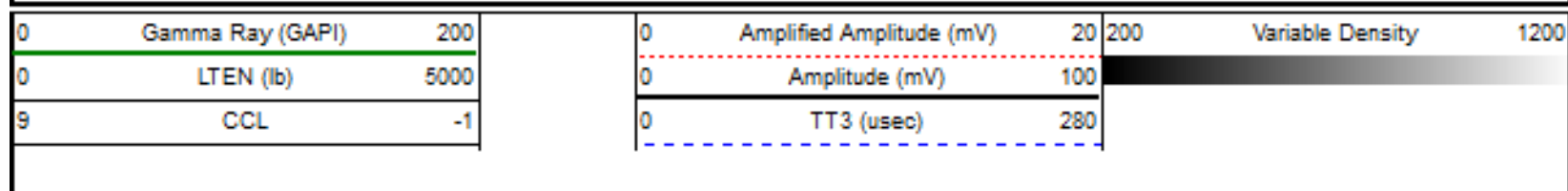


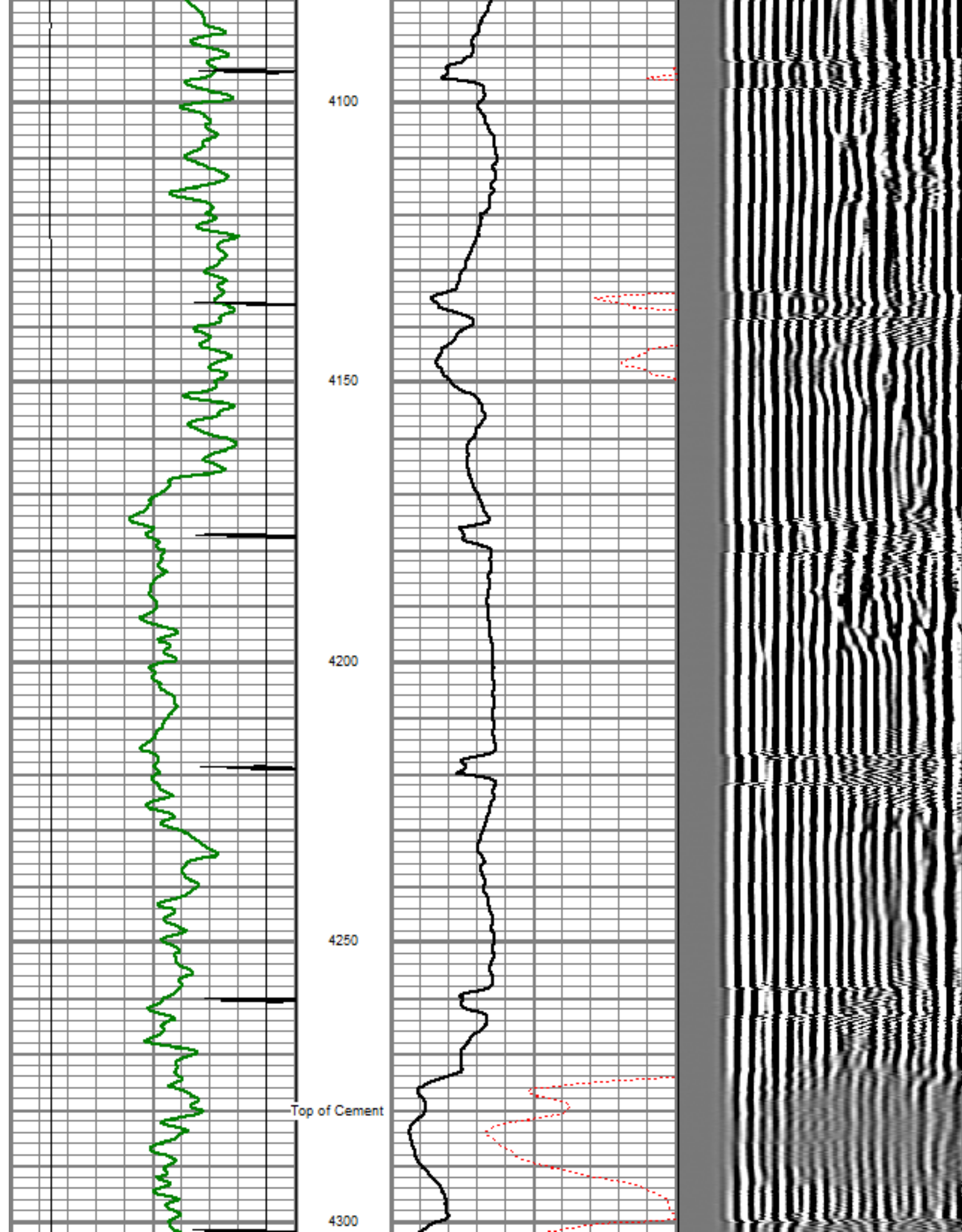


## MAIN PASS

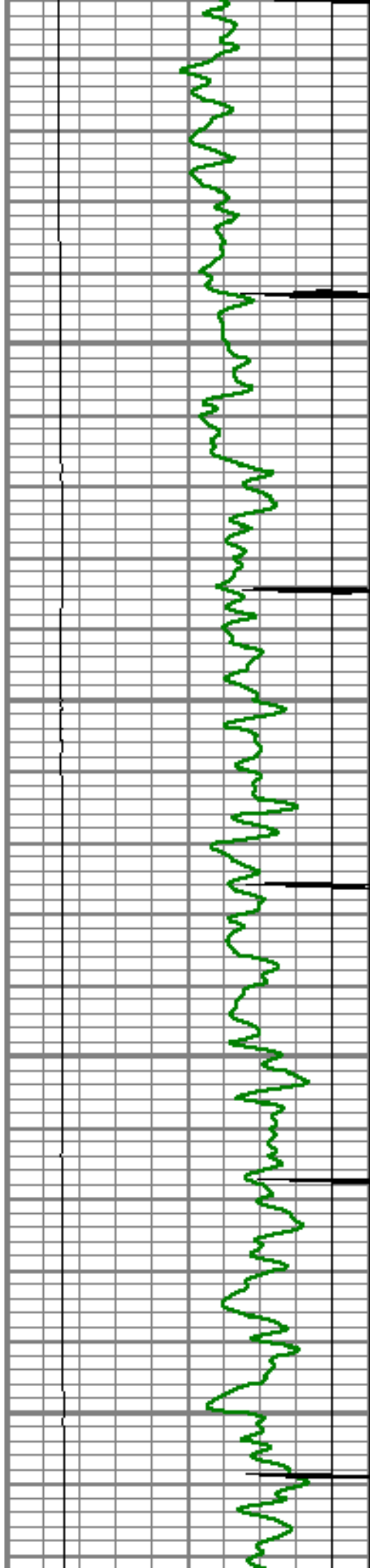
5" = 100'

Database File: ione 4-8-8.db  
 Dataset Pathname: pass3  
 Presentation Format: dcbl\_prb  
 Dataset Creation: Wed Dec 05 10:10:41 2012 by Log SCH 110930  
 Charted by: Depth in Feet scaled 1:240







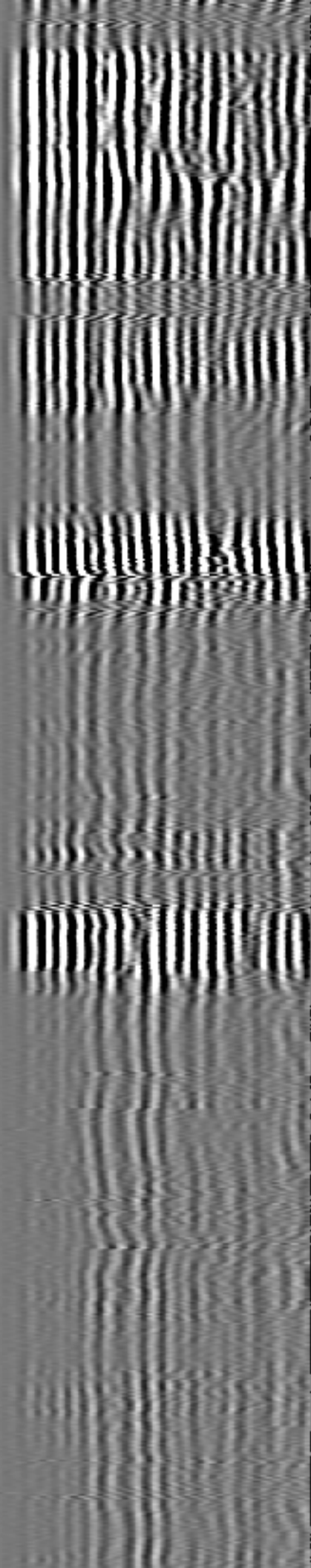
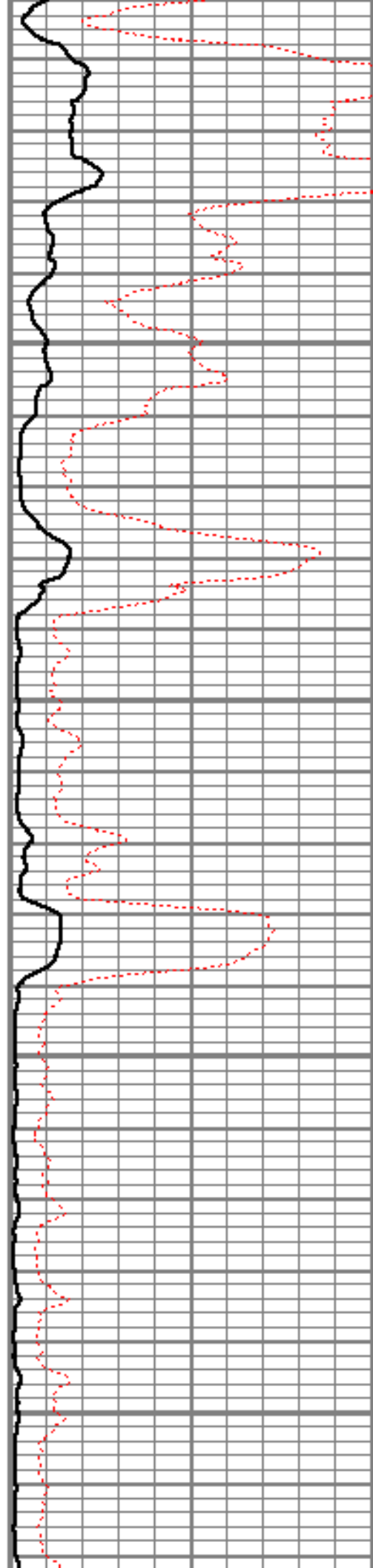


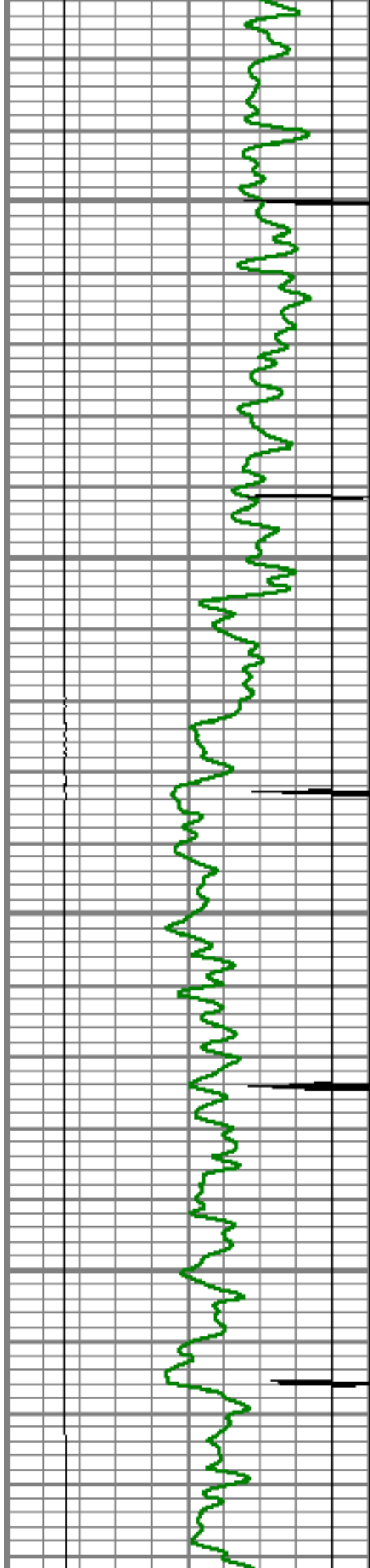
4350

4400

4450

4500



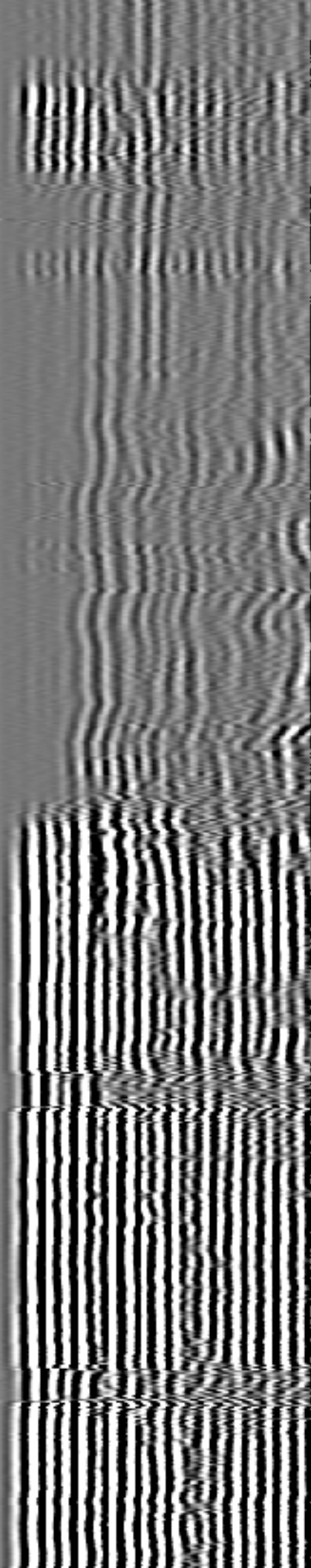
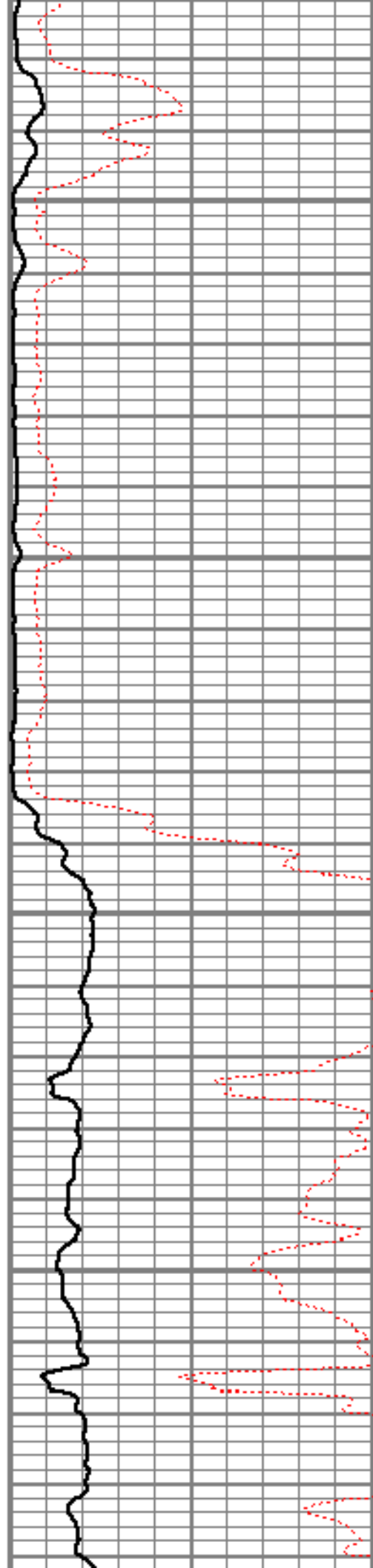


4550

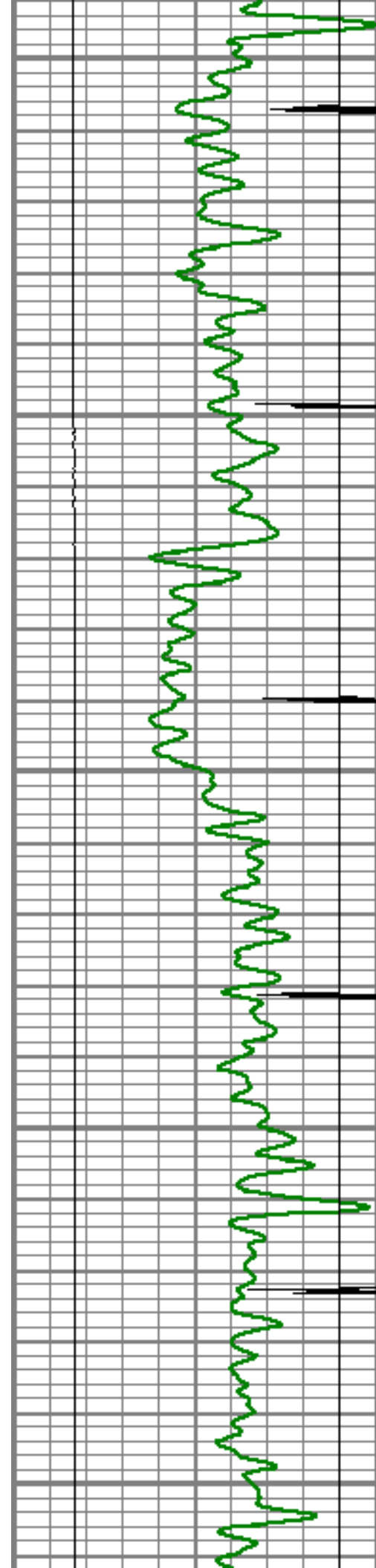
4600

4650

4700







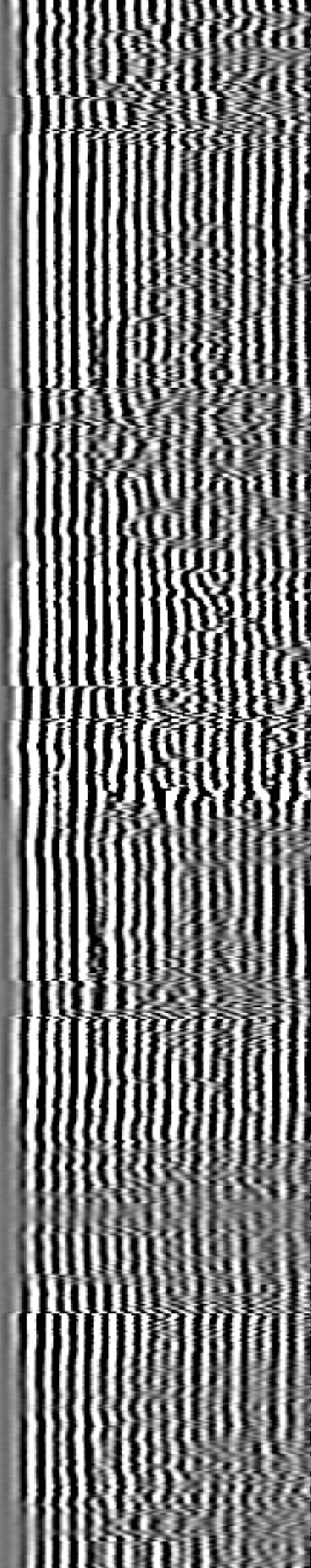
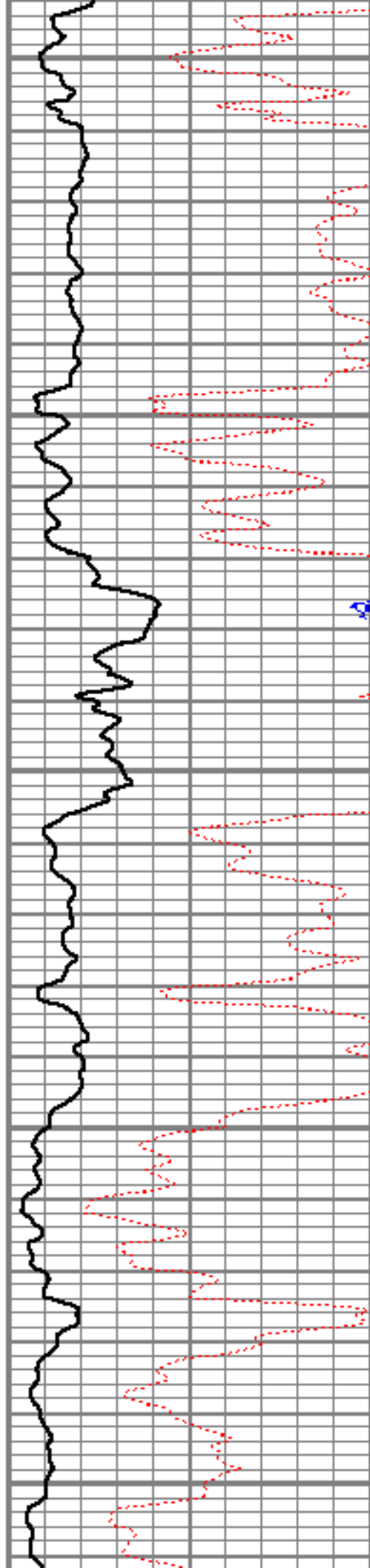
4750

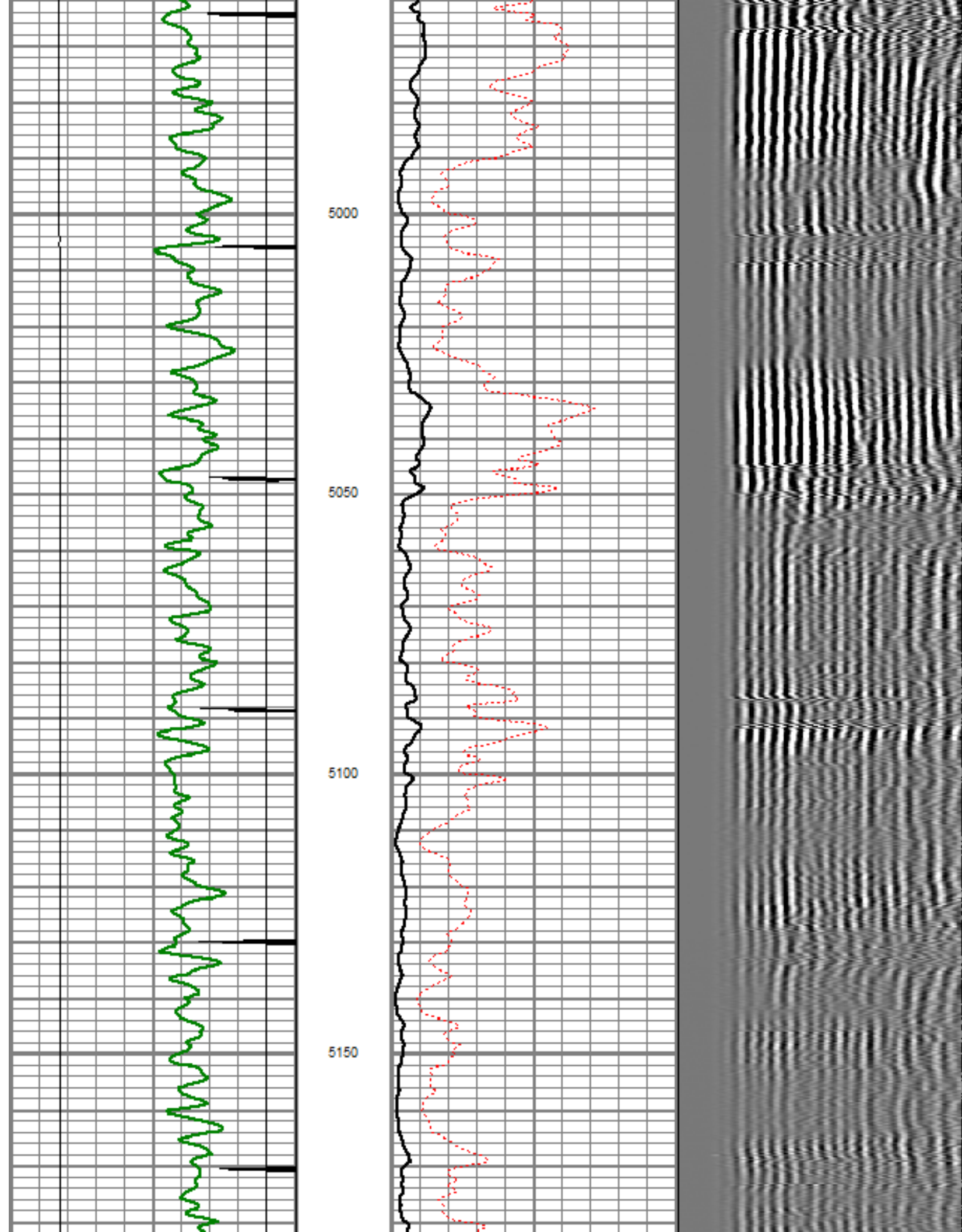
4800

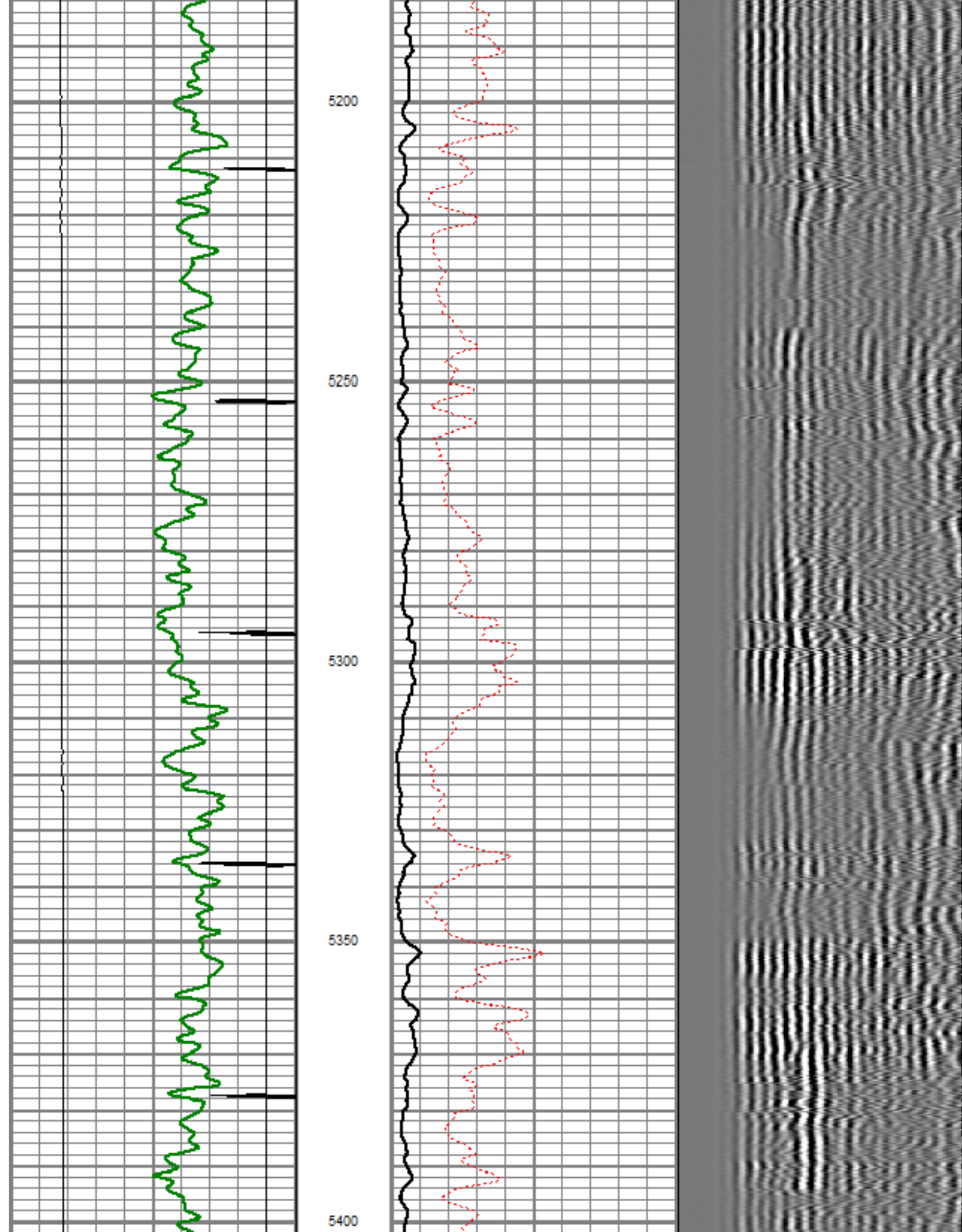
4850

4900

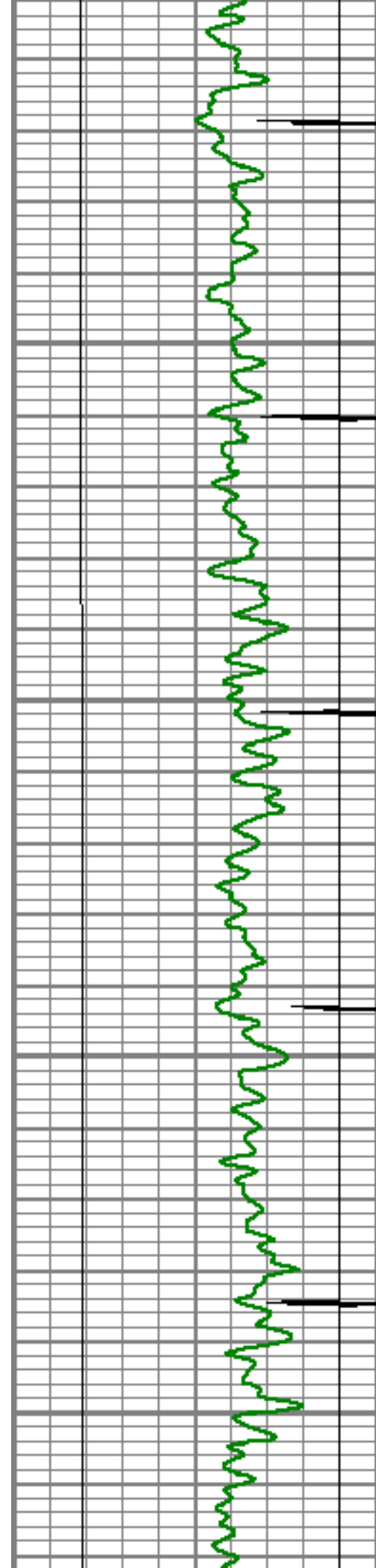
4950









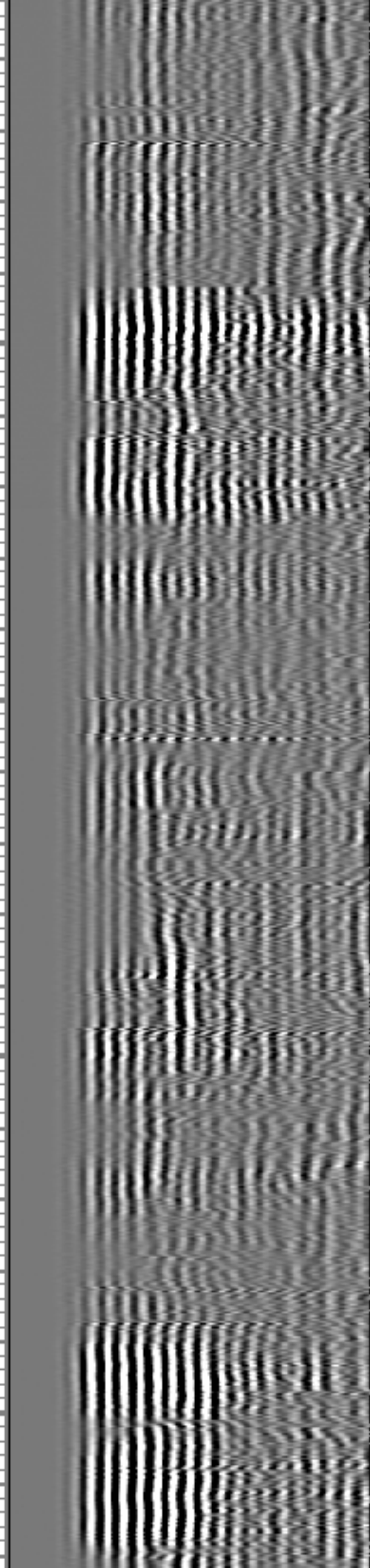
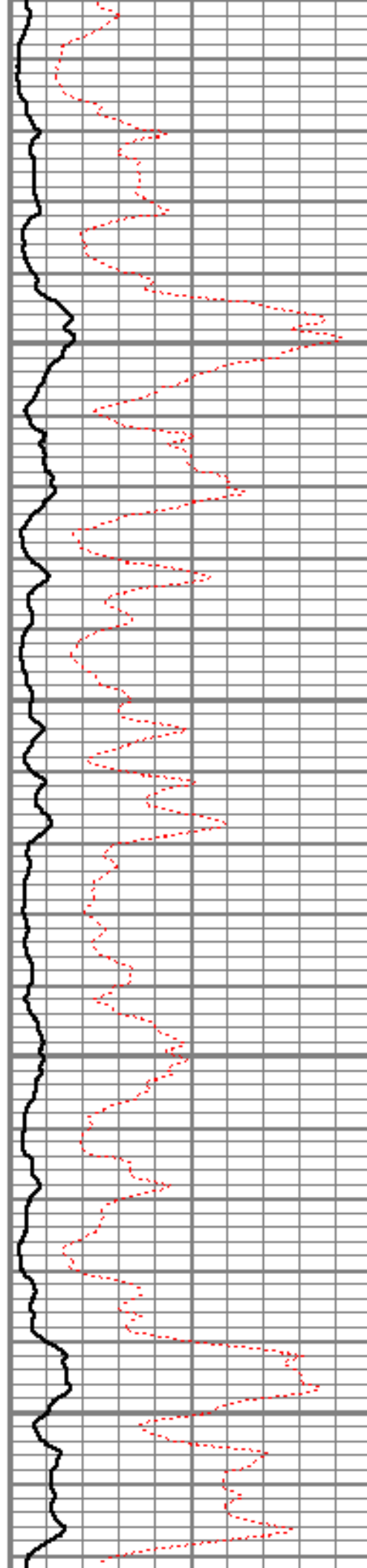


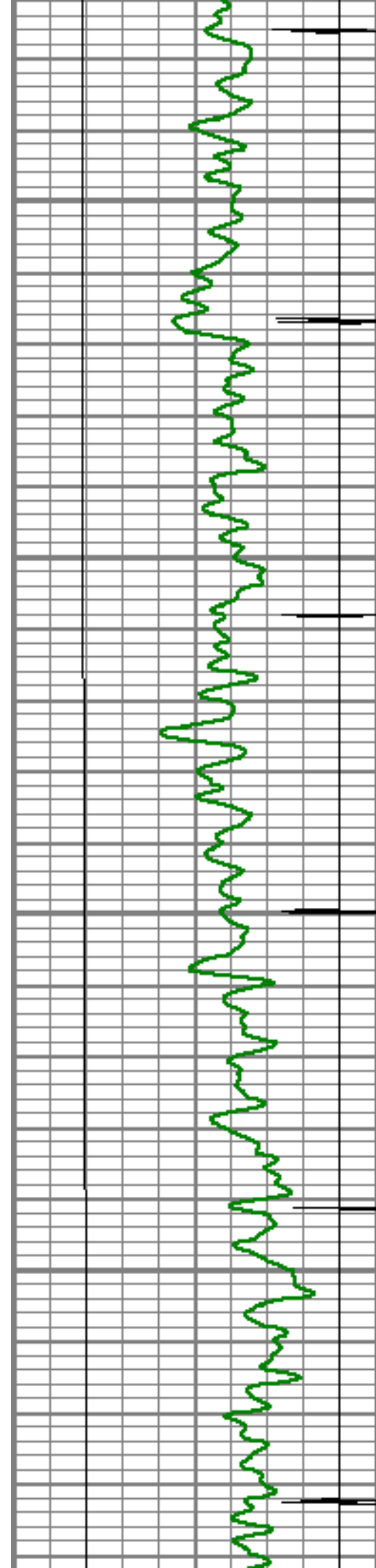
5450

5500

5550

5600



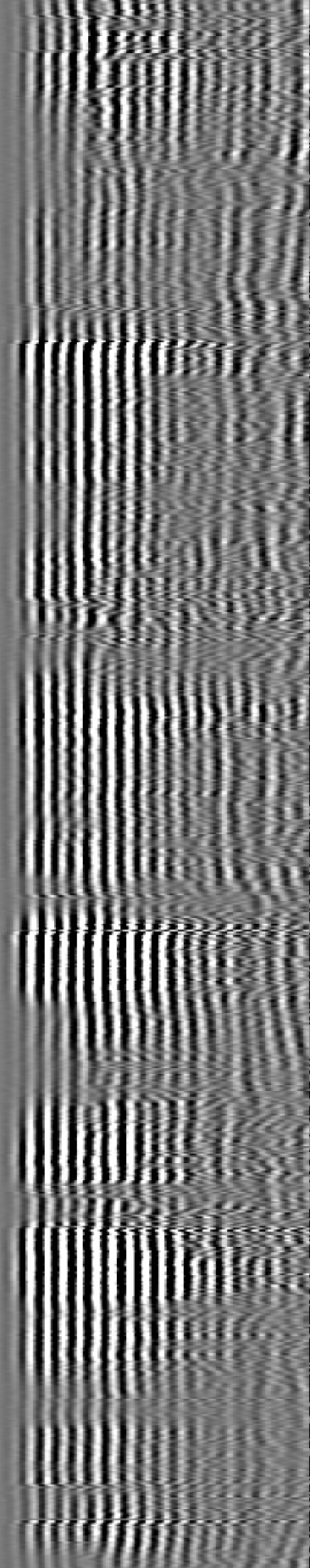
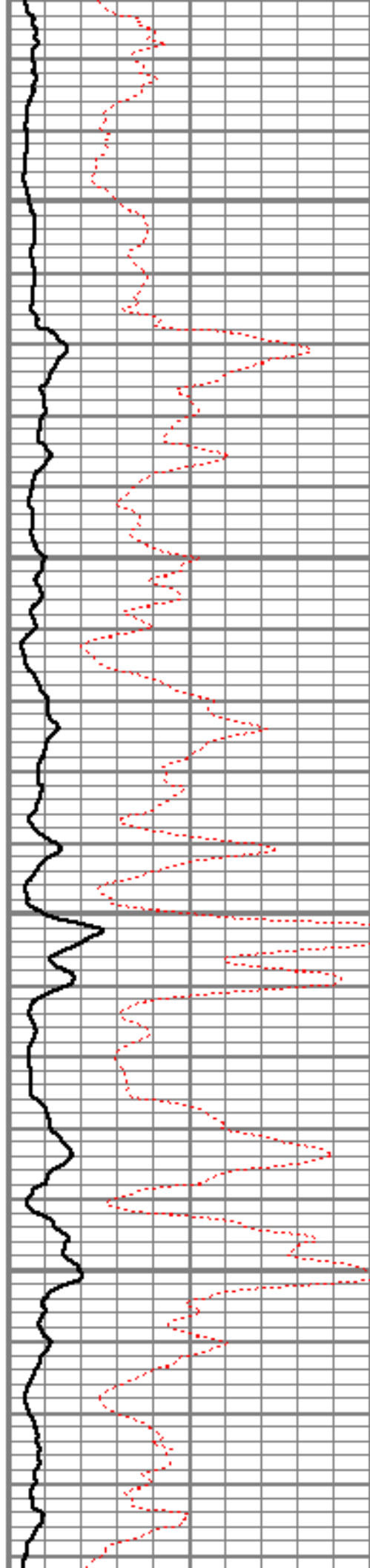


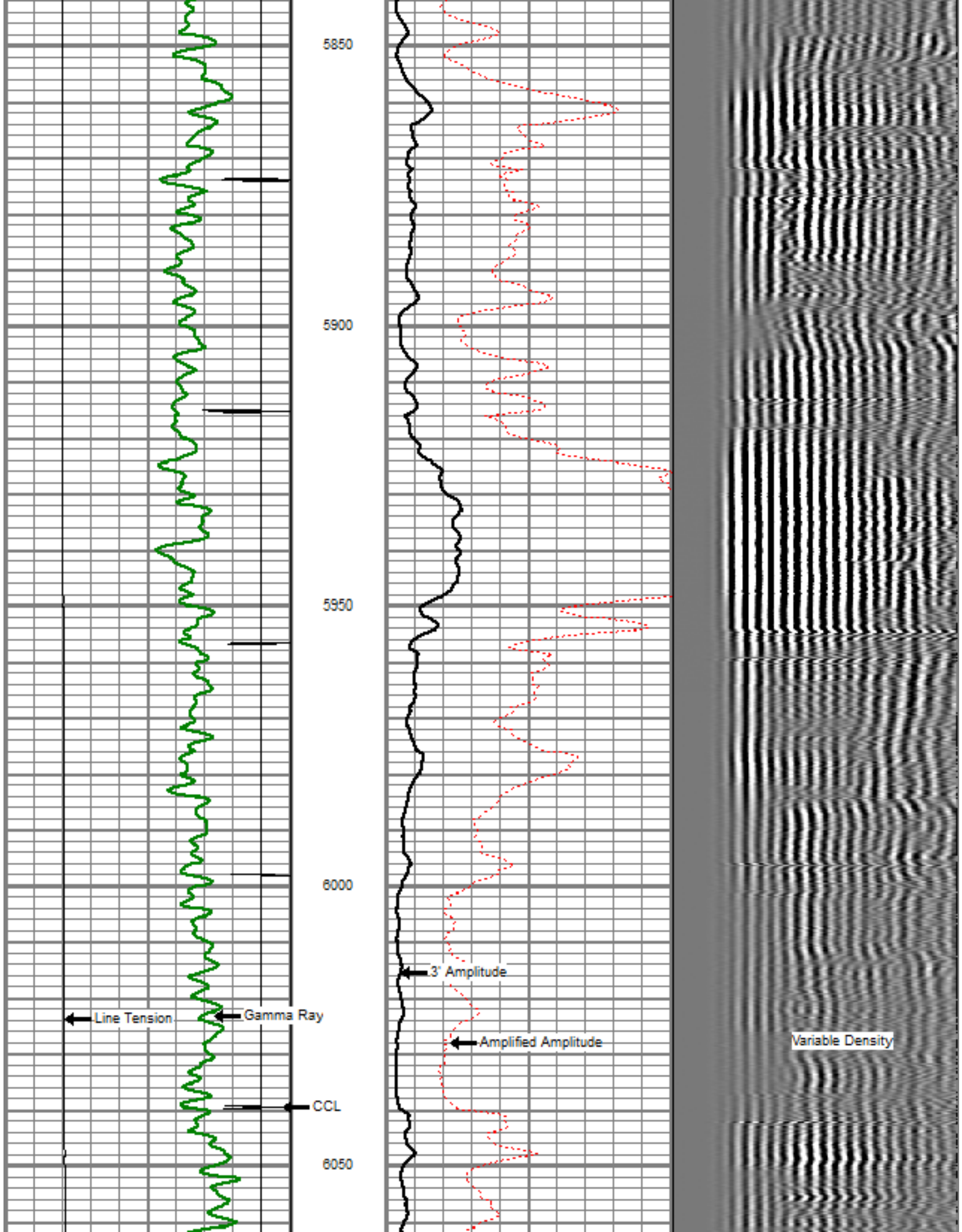
5650

5700

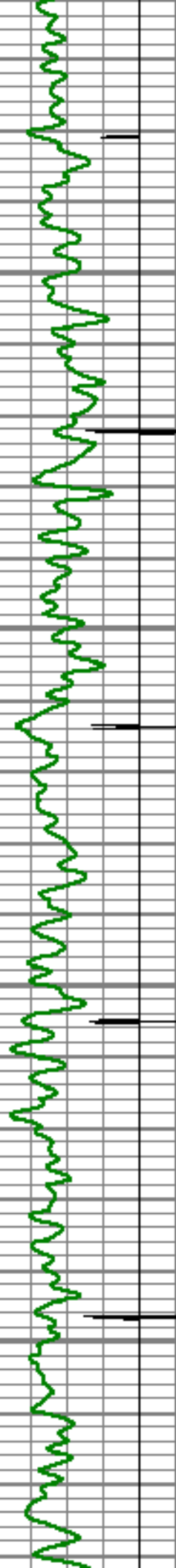
5750

5800







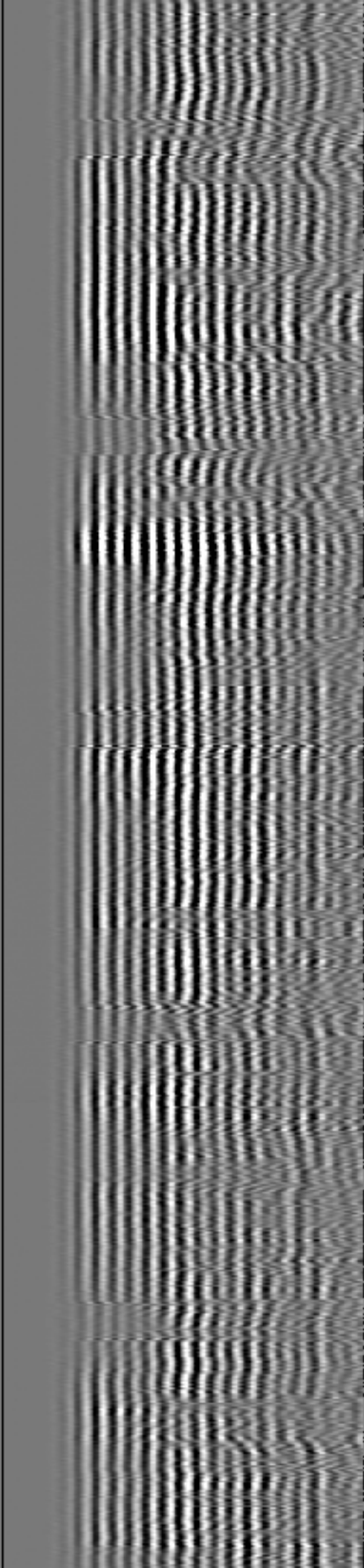
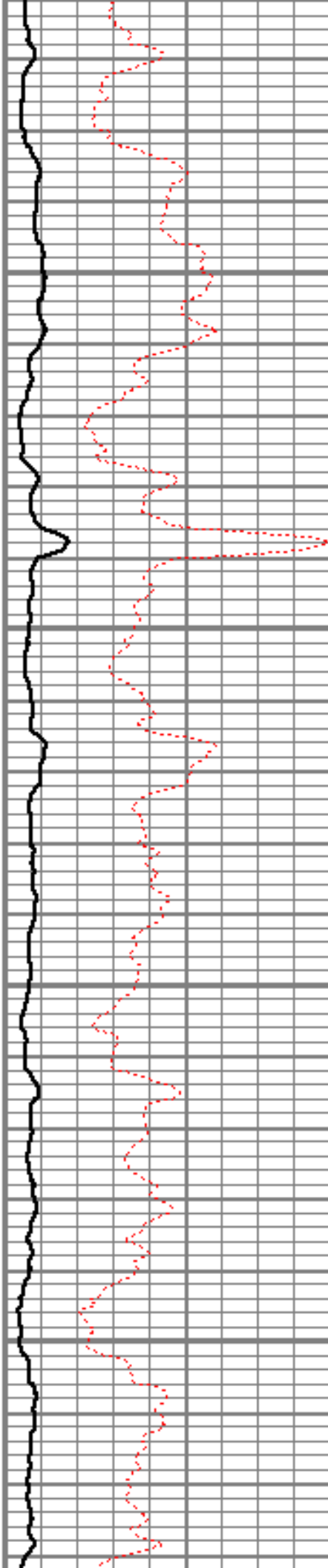


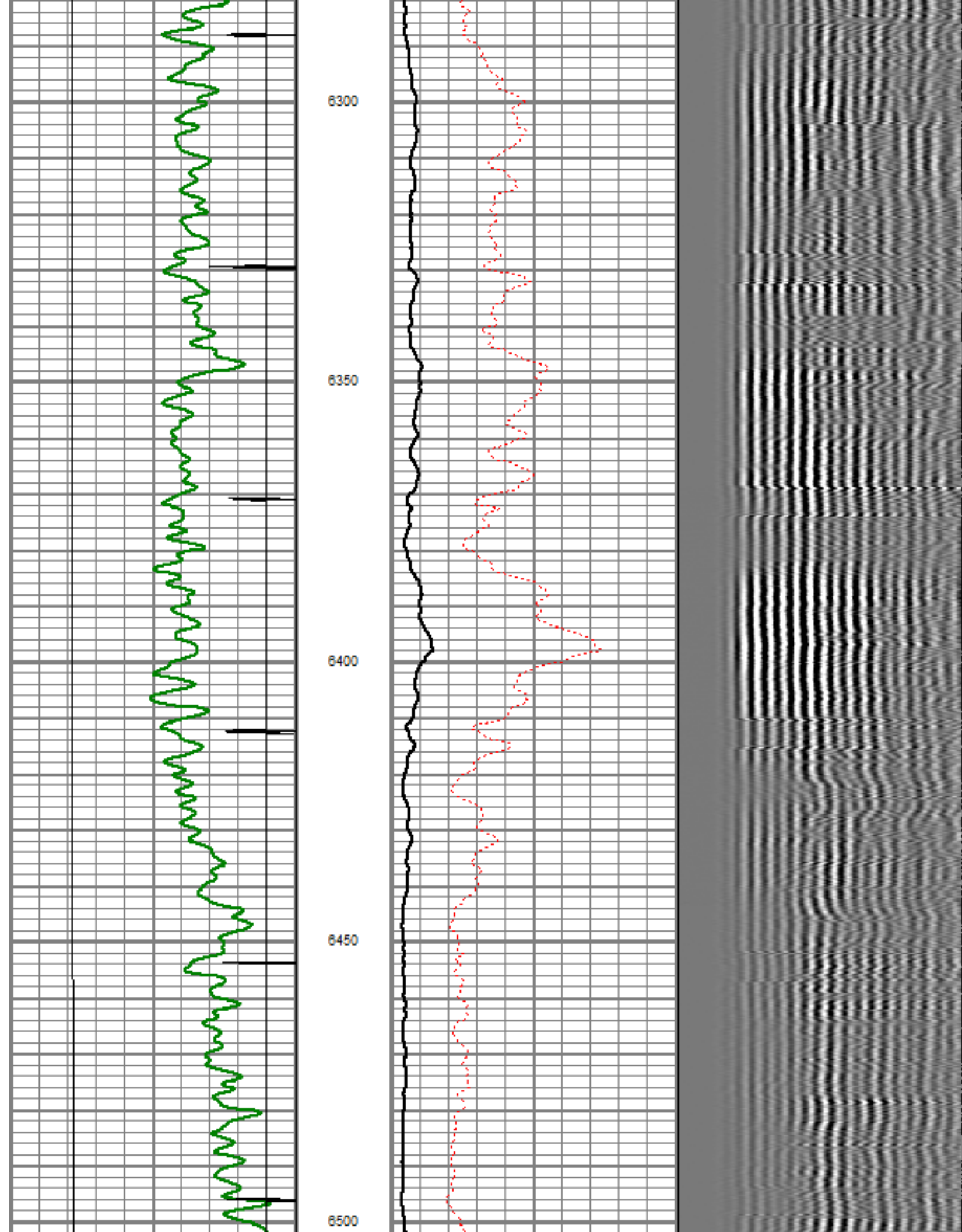
6100

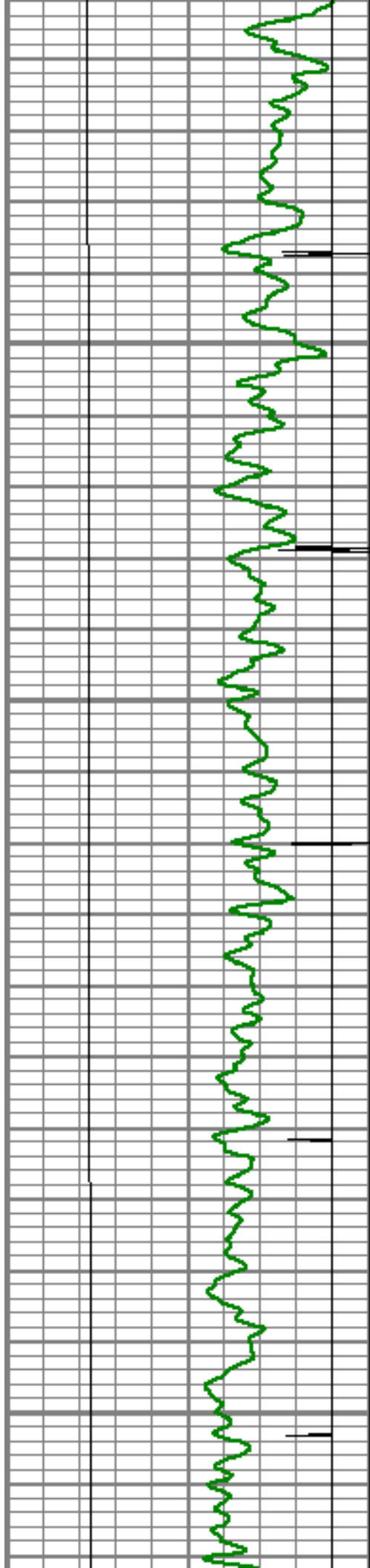
6150

6200

6250





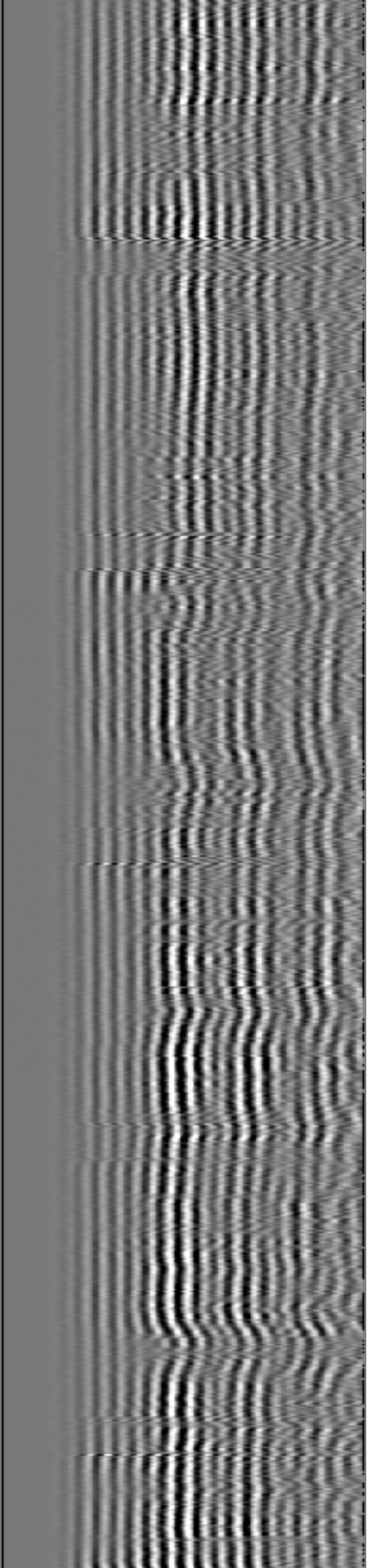
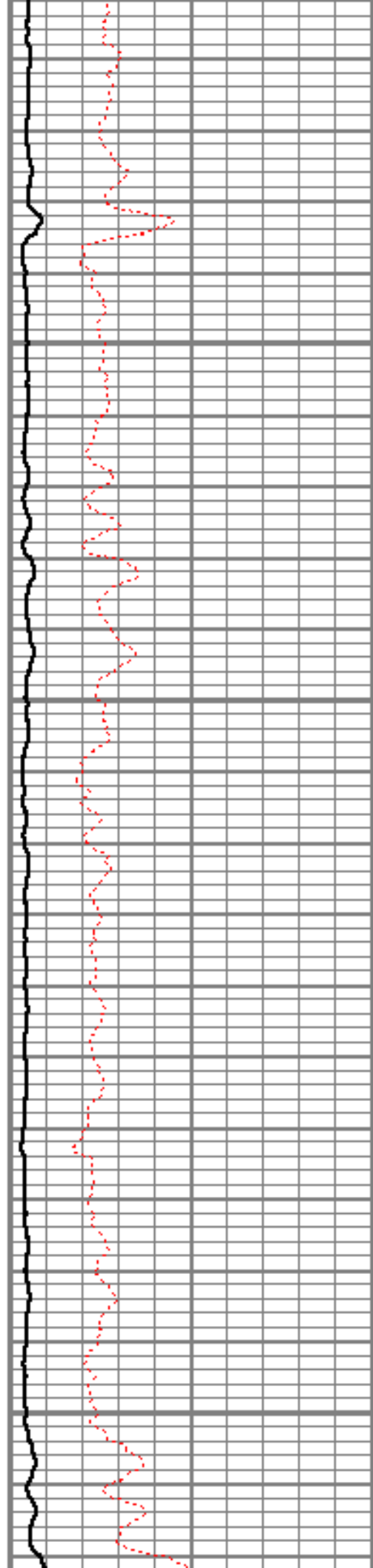


6550

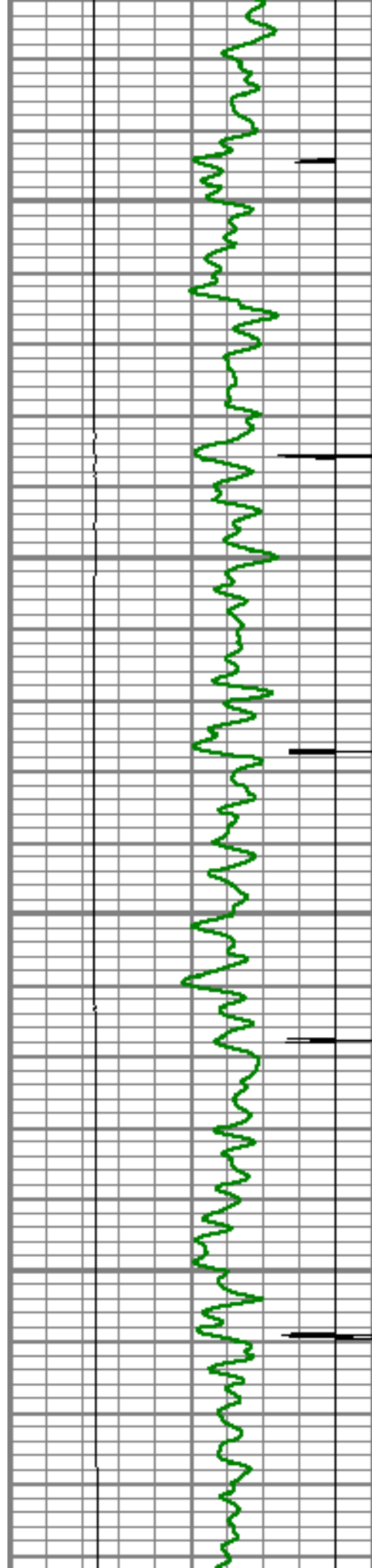
6600

6650

6700





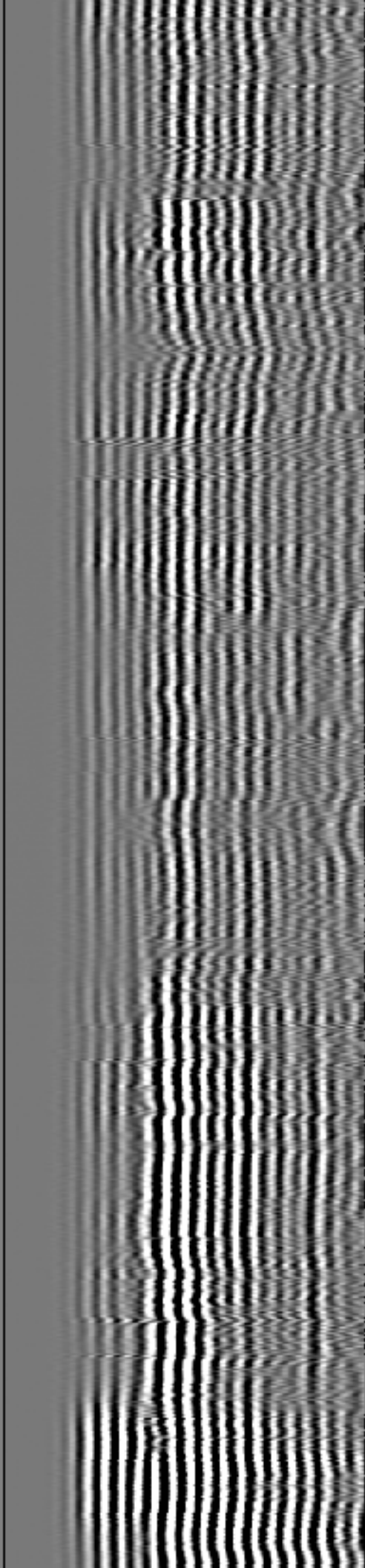
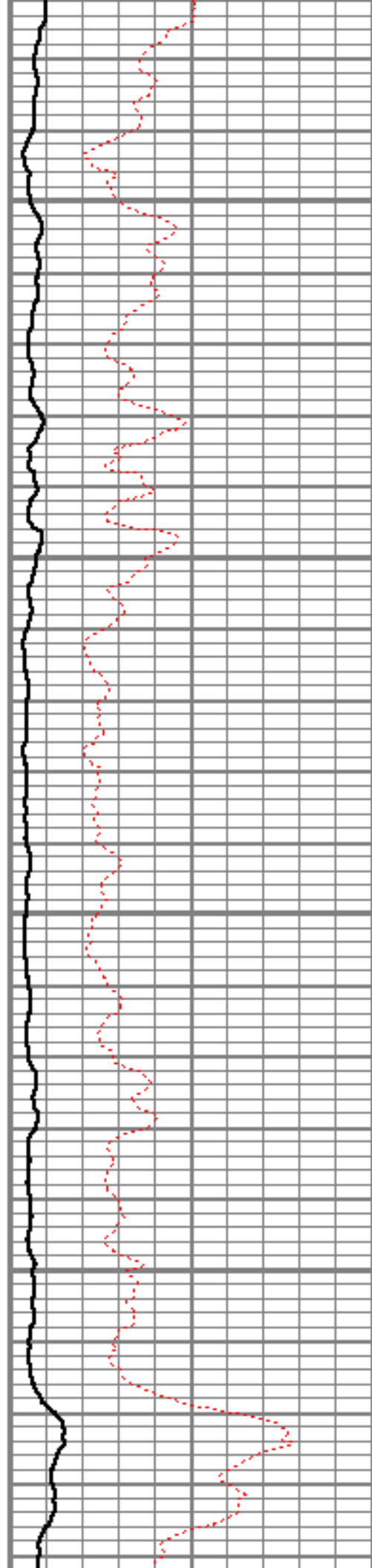


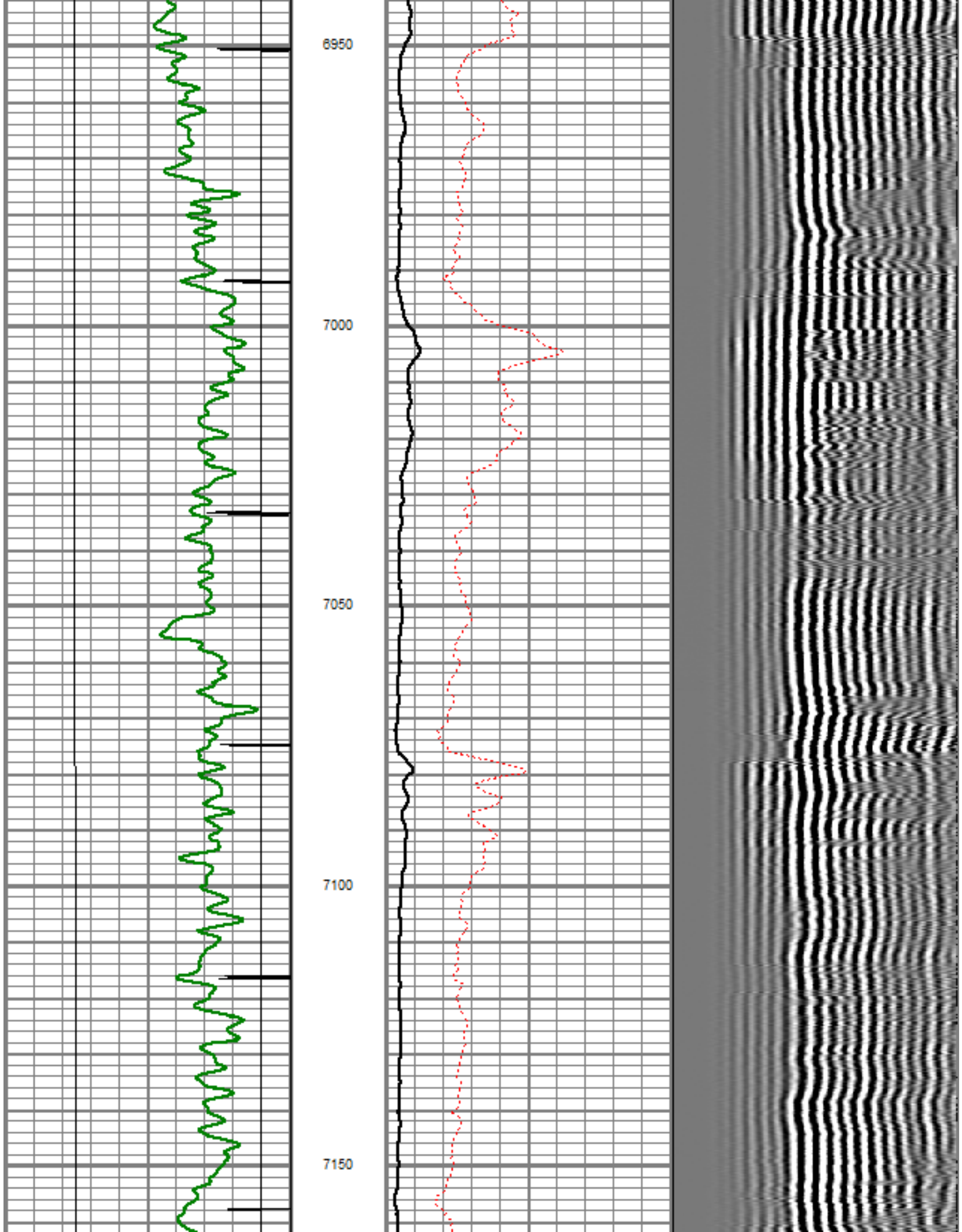
6750

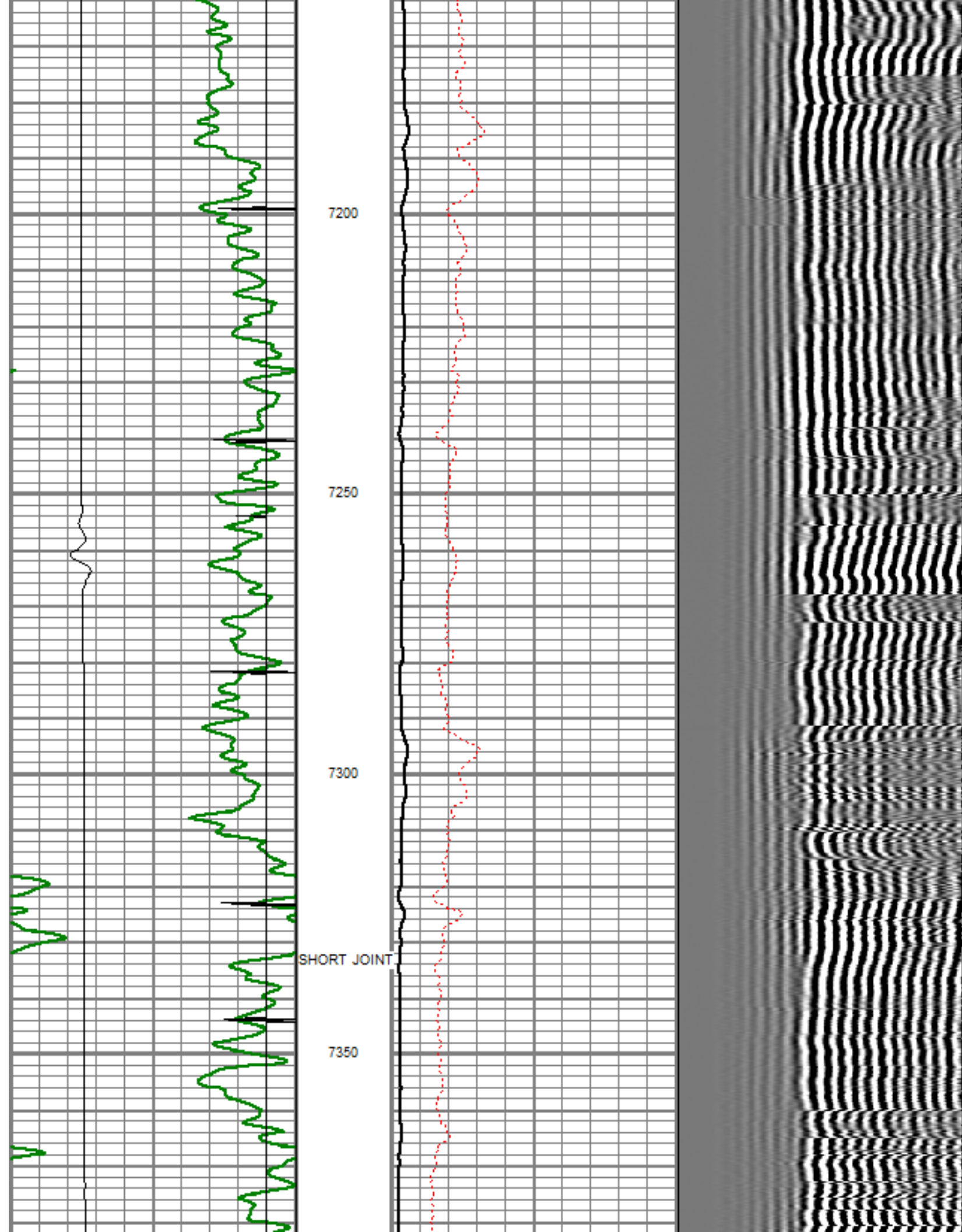
6800

6850

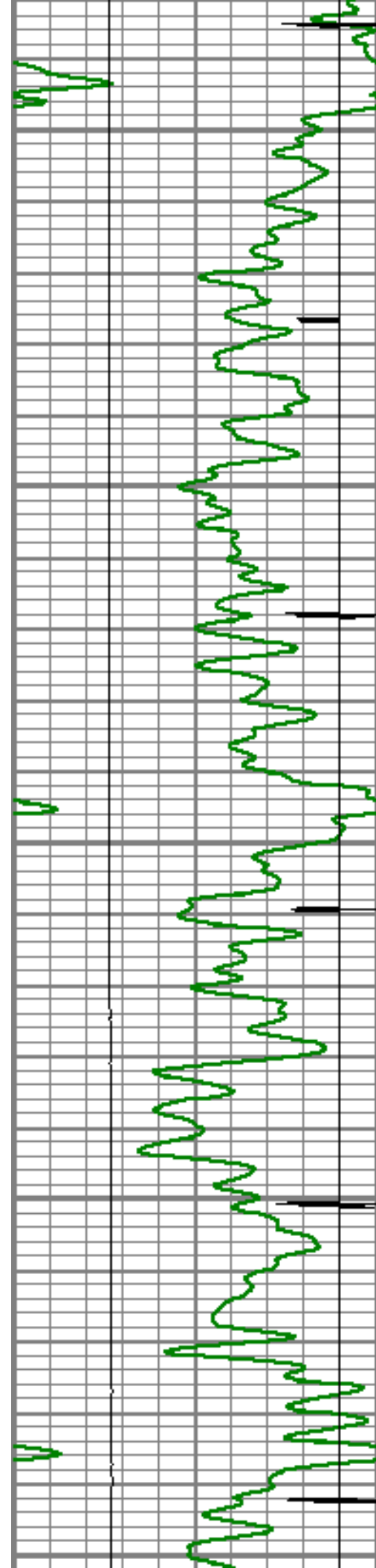
6900











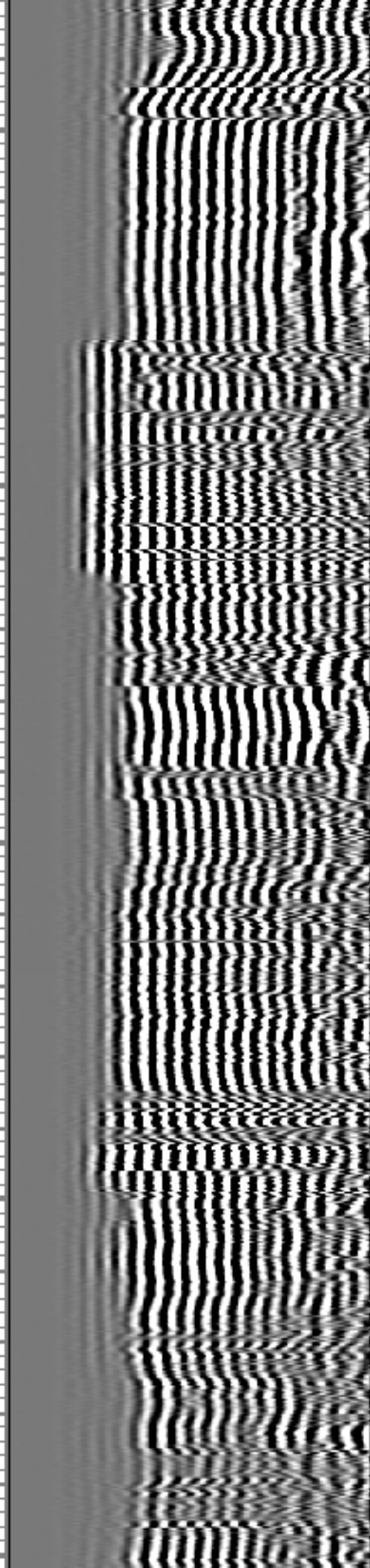
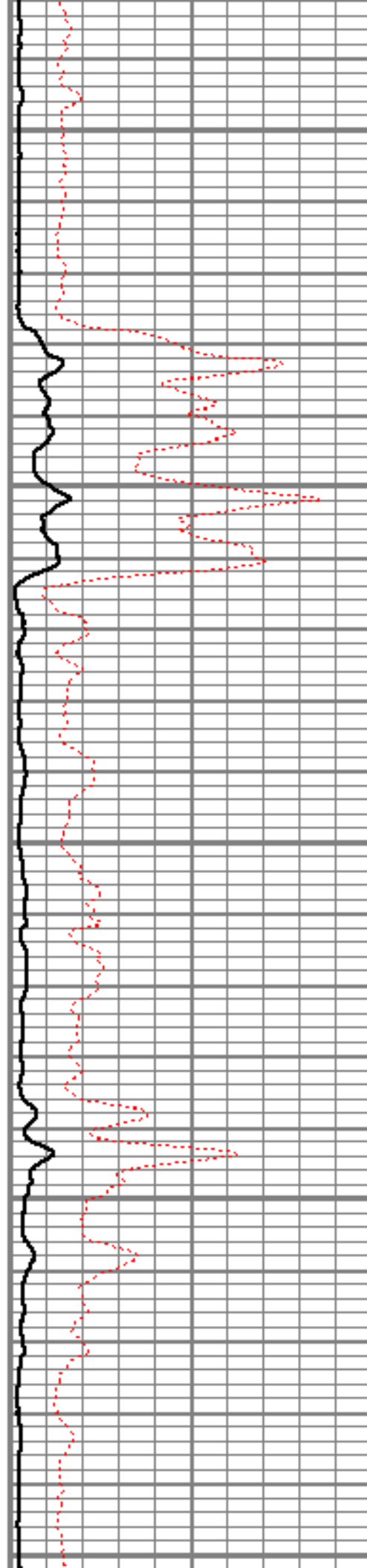
7400

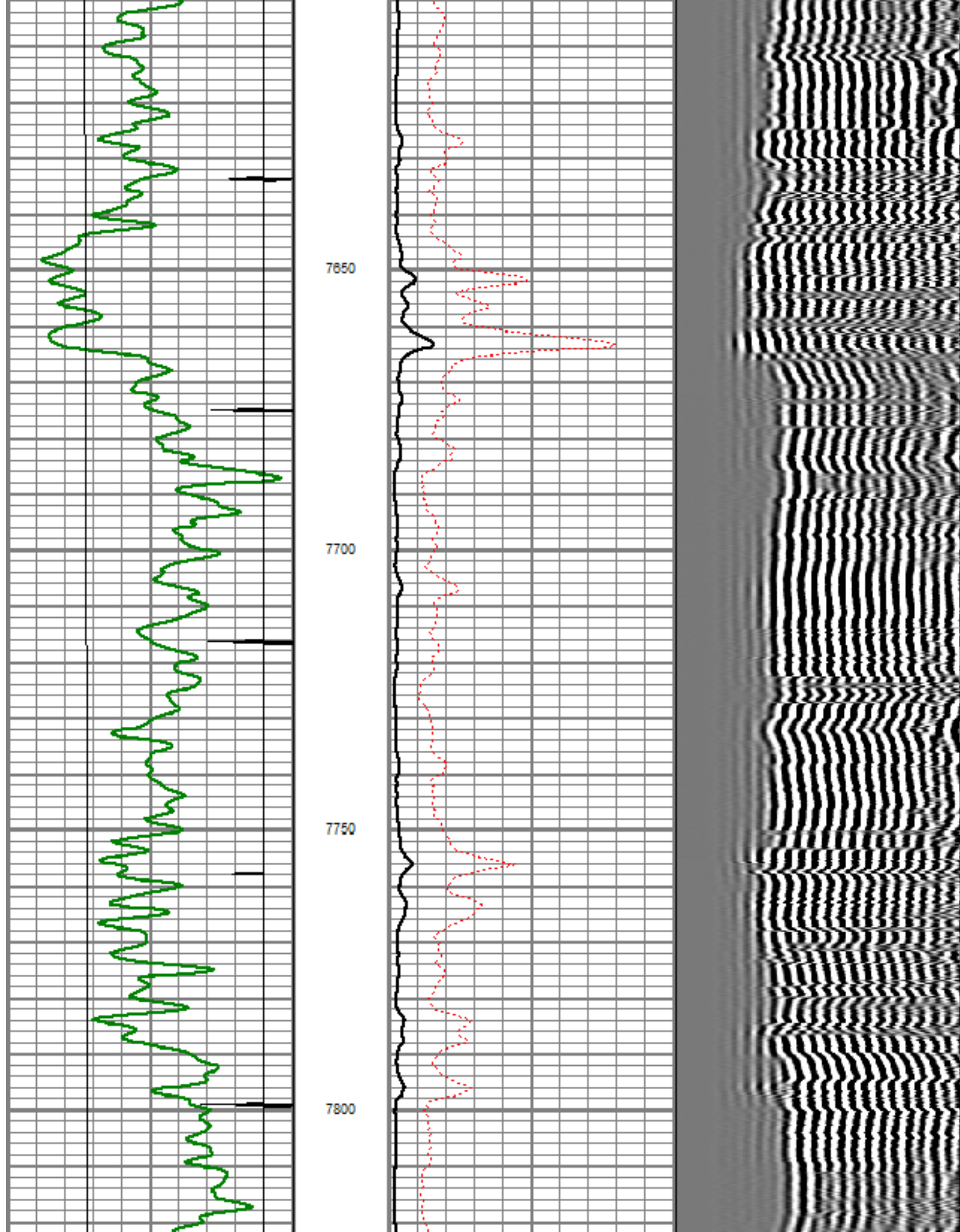
7450

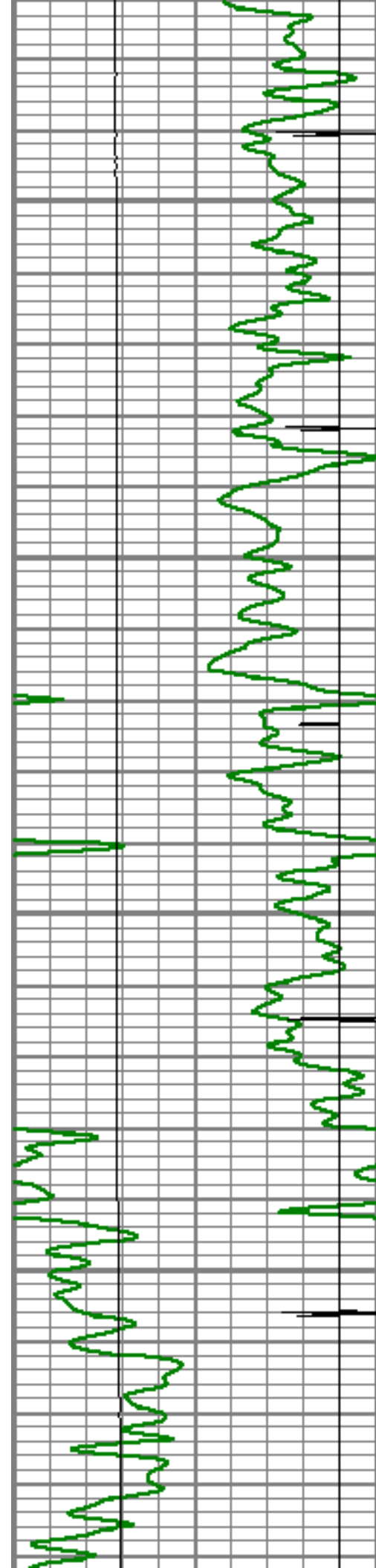
7500

7550

7600





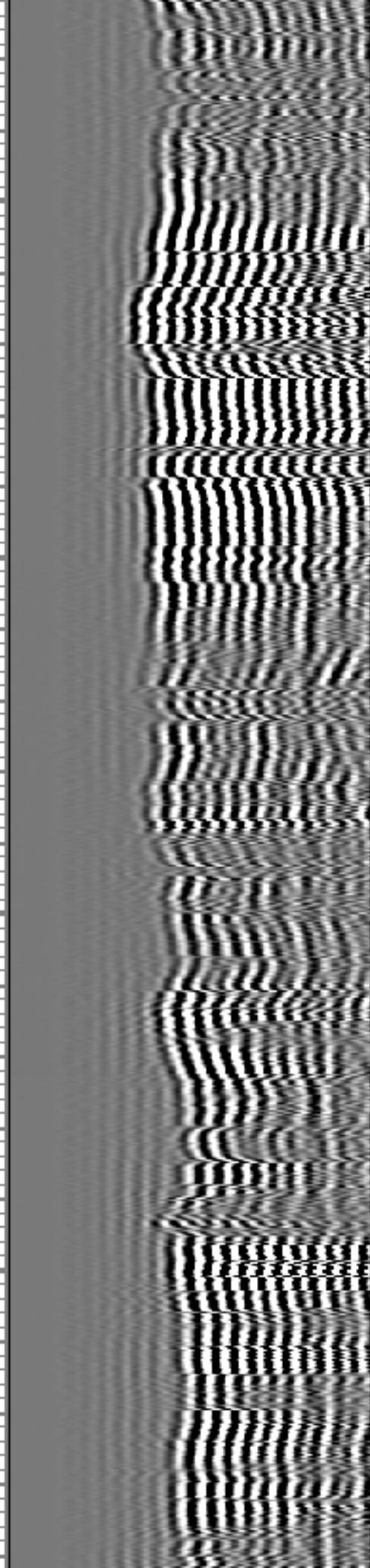
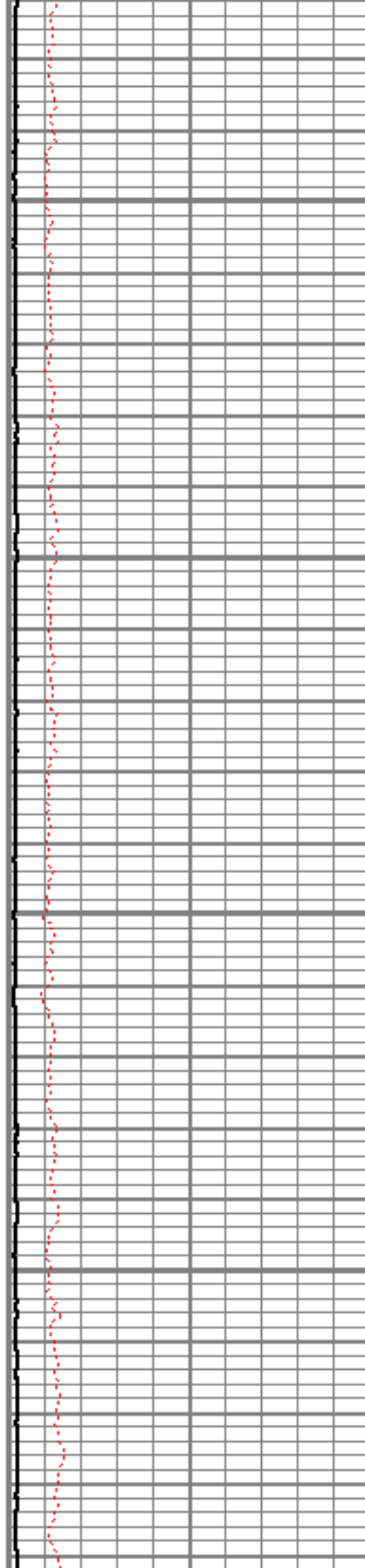


7850

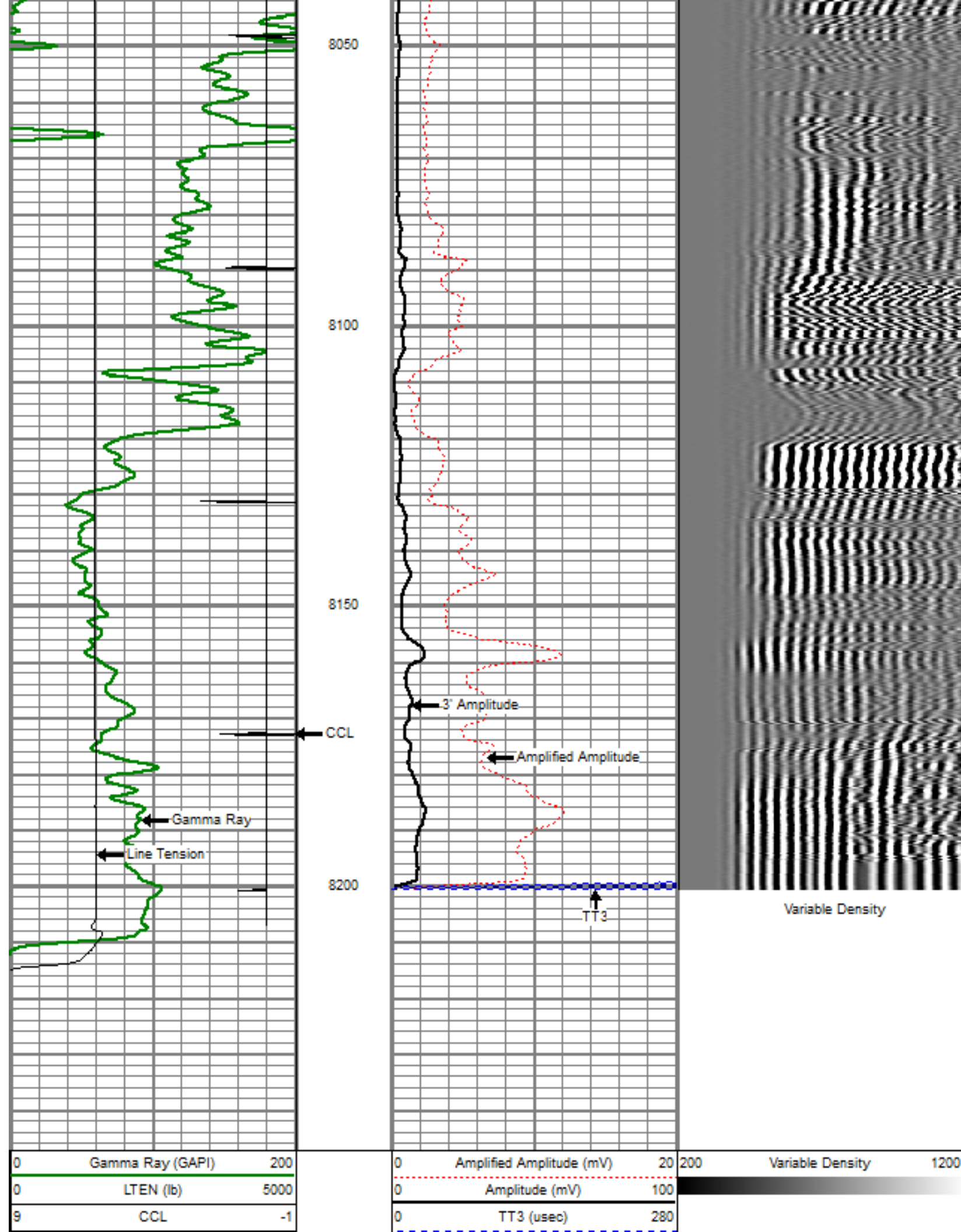
7900

7950

8000







Sensor	Offset (ft)	Schematic	Description	Len (ft)	OD (in)	Wt (lb)
WVF3	14.54		titan Titan Cable Head Go Pin.	1.02	1.44	1.50
			Centralizer-Probe (CENT-PROBE-1) Probe Bowspring Centralizer	2.88	2.75	10.00
			CBL-PRB_CBL_DIGITAL (PRB_CBL_DIG_28.77 1) Probe 2.75" Dual Receiver Bond	28.77	2.75	60.00
			Centralizer-Probe (CENT-PROBE-2) Probe Bowspring Centralizer	2.88	2.75	10.00
			GR-PROBE_GRCL (PRB_GRCL_275_01) Probe 2.75" 4 Channel Pulse	4.54	2.75	30.00
GR	3.77		TEMP-Comprobe (TEMP_CMPRB_1375_0) Positive pulse Temp tool	2.88	1.38	15.00
TEMP	0.17					

Total Length:	22.98 ft
Total Weight:	126.50 lb
O.D.	2.75 in



Company	ENCANA OIL & GAS (USA) INC
Well	IONE 4-6-8
Field	WATTENBERG
County	WELD
State	COLORADO