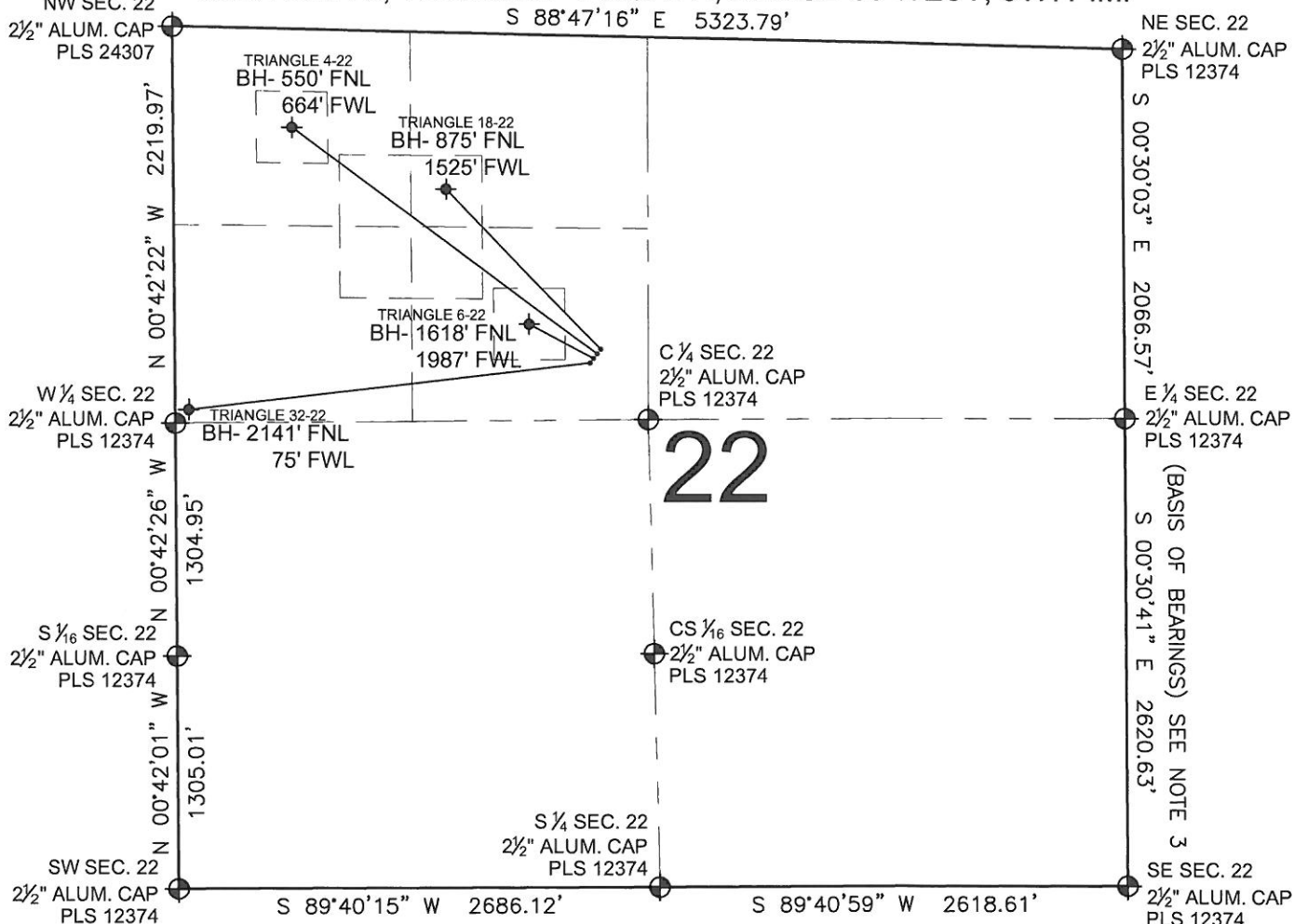


# TRIANGLE 6-22 PAD MULTI-WELL PLAN

SECTION 22, TOWNSHIP 7 NORTH, RANGE 65 WEST, 6TH P.M.



### LEGEND

- ⊕ = EXISTING MONUMENT      ⊕ = BOTTOM HOLE      BH= BOTTOM HOLE
- = PROPOSED WELL          ◆ = EXISTING WELL

### NOTES:

1. THIS FIELD SURVEY CONFORMS TO THE MINIMUM STANDARDS SET BY THE C.O.G.C.C., RULE NO. 215
2. HORIZONTAL POSITIONS AND ORTHOMETRIC ELEVATIONS SHOWN AT THE WELL HEAD, ARE BASED ON GPS-RTK POSITIONS DERIVED FROM MINIMUM 2-HOUR STATIC OBSERVATIONS CORRECTED BY THE NATIONAL GEODETIC SURVEY ONLINE POSITIONING USER SERVICE, O.P.U.S. DATUM: HORIZONTAL = NAD83/2007, VERTICAL = NAVD88
3. THE BASIS OF BEARINGS ARE STATE PLANE COORDINATE SYSTEM GRID BEARINGS SHOWN HEREON BETWEEN THE DESCRIBED MONUMENTS SHOWN HEREON.
4. GRID DISTANCES ARE SHOWN, AS MEASURED IN THE FIELD, WITH TIES TO WELLS MEASURED PERPENDICULAR TO SECTION LINES.

### NOTES:

- TRIANGLE 18-22 TO BE AT 1764' FNL, 2373' FWL. BOTTOM HOLE AT 875' FNL & 1525' FWL.
- TRIANGLE 4-22 TO BE AT 1776' FNL, 2363' FWL. BOTTOM HOLE AT 550' FNL & 664' FWL.
- TRIANGLE 6-22 TO BE AT 1788' FNL, 2354' FWL. BOTTOM HOLE AT 1618' FNL & 1987' FWL.
- TRIANGLE 32-22 TO BE AT 1800' FNL, 2345' FWL. BOTTOM HOLE AT 2141' FNL & 75' FWL.

PREPARED BY:



**Petroleum Field Services, LLC**  
1801 W. 13th Ave.  
Denver, CO 80204

BAYSWATER EXPLORATION & PRODUCTION, LLC

FIELD DATE: 09-19-12	PAD NAME: TRIANGLE 6-22 PAD
DRAWING DATE: 09-20-12	SURFACE LOCATION: SE 1/4 NW 1/4, SEC. 22, T7N, R65W, 6TH P.M.
BY: SMF	CHECK: MLP
WELD COUNTY, COLORADO	

