



Digital Drilling Data
Systems, LLC

MD BUILD

(Scale: 5":100' (10'))

Company: Encana Oil & Gas

State: CO

Well: Stelling 3A-4H

County: Weld

Field: DJ Basin

Country: USA

Well ID: 051233476400

Job Number: 125383

Location: SESW S4-T1N-R65W

Elev KB: 4930

Operator 1: Cathedral Energy

Elev DF: 4910

Operator 2: Erick King

Elev GL: 4910

Comment 1:

Comment 2:

Comment 3:

Comment 4:

Comment 5:

Hole Data

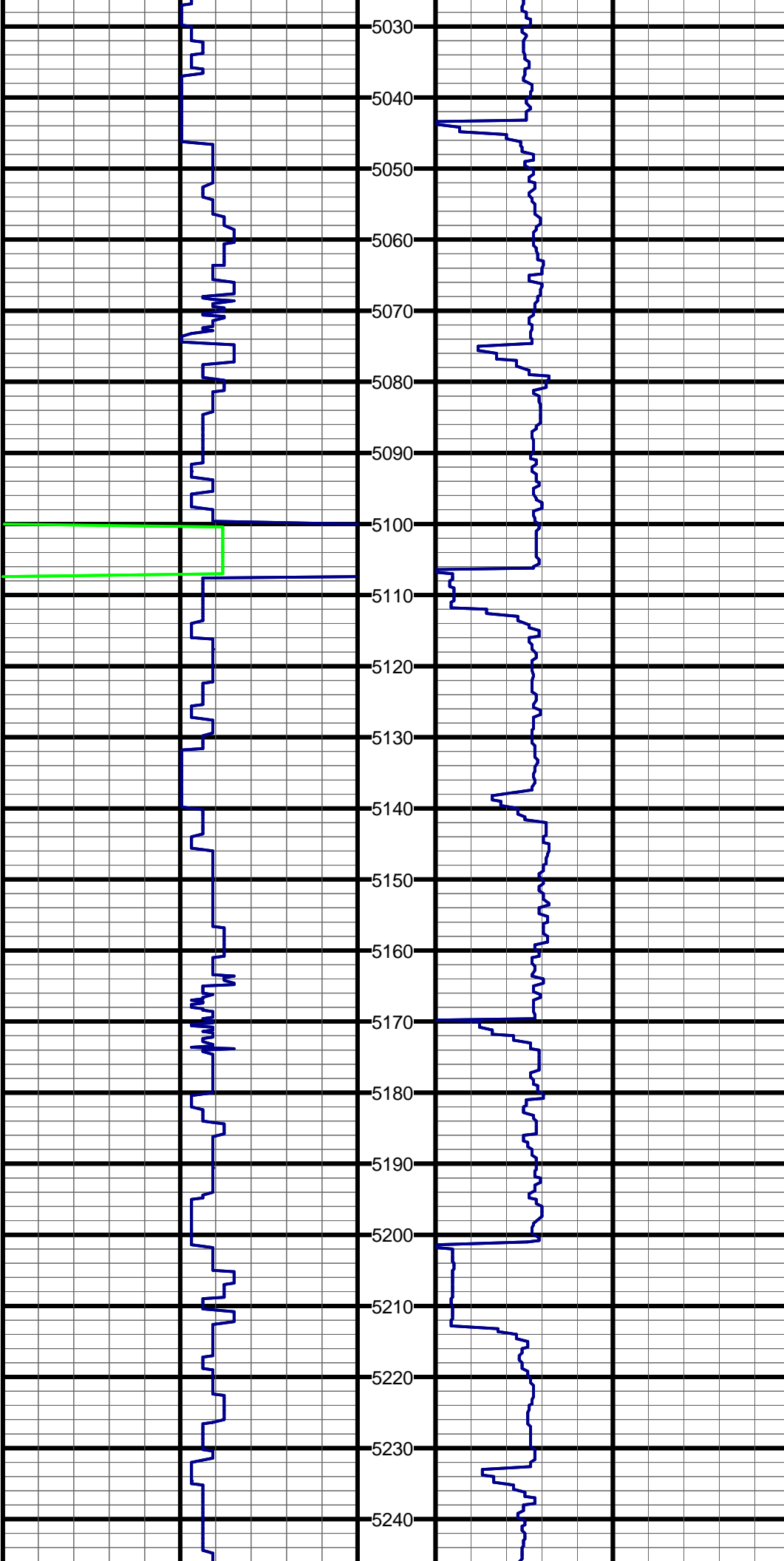
Casing Record

Size	From	To	Size	From	To
12.25	80	1001	9.6.25	80	1000
8.75	1001	7507			

Tool Run Data	Run #1	Run #2	Run #3	Run #4	Run #5
Tool S/N	1074	1074			
Cal Factor	4.463	4.463			
Gamma Offset	38.53	37.94			
Start Depth	80	1003			
Start Date	6-7-2012	6-9-2012			
Start Time	17:00	22:30			
End Depth	1001	7507			
End Date	6-8-2012	6-14-2012			
End Time	16:30	19:00			

ROP (MD) Track: 1
5":100' (10")
0 1000
Ft/Hr

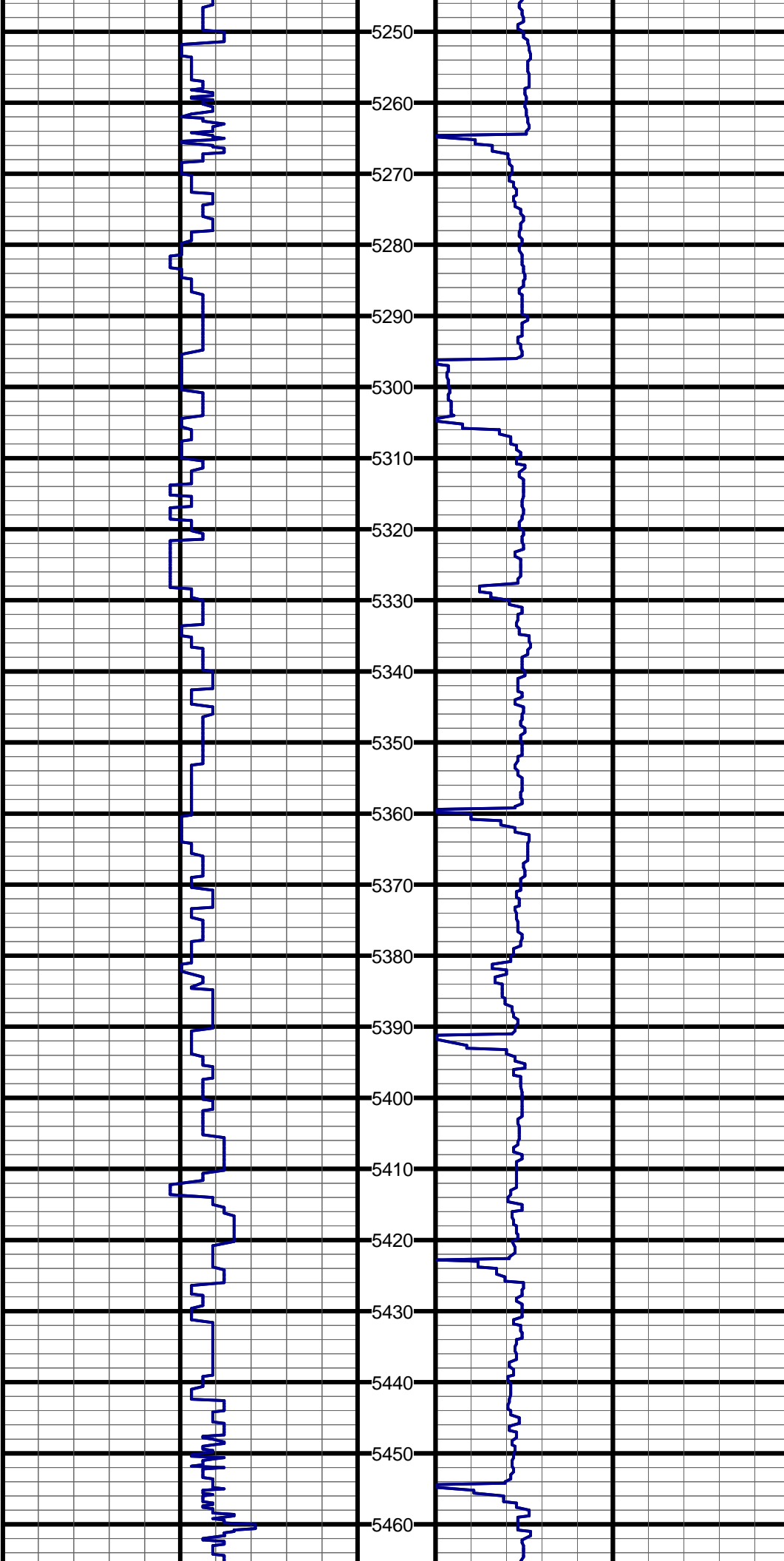
Gamma API (MD) Track: 1
API
0 150 300 450
150 300 450



#55 MD:5056.0 TVD:5009.5 I:9.3 A:230.1 VS:-500.4

#56 MD:5151.0 TVD:5103.5 I:7.7 A:232.3 VS:-509.2

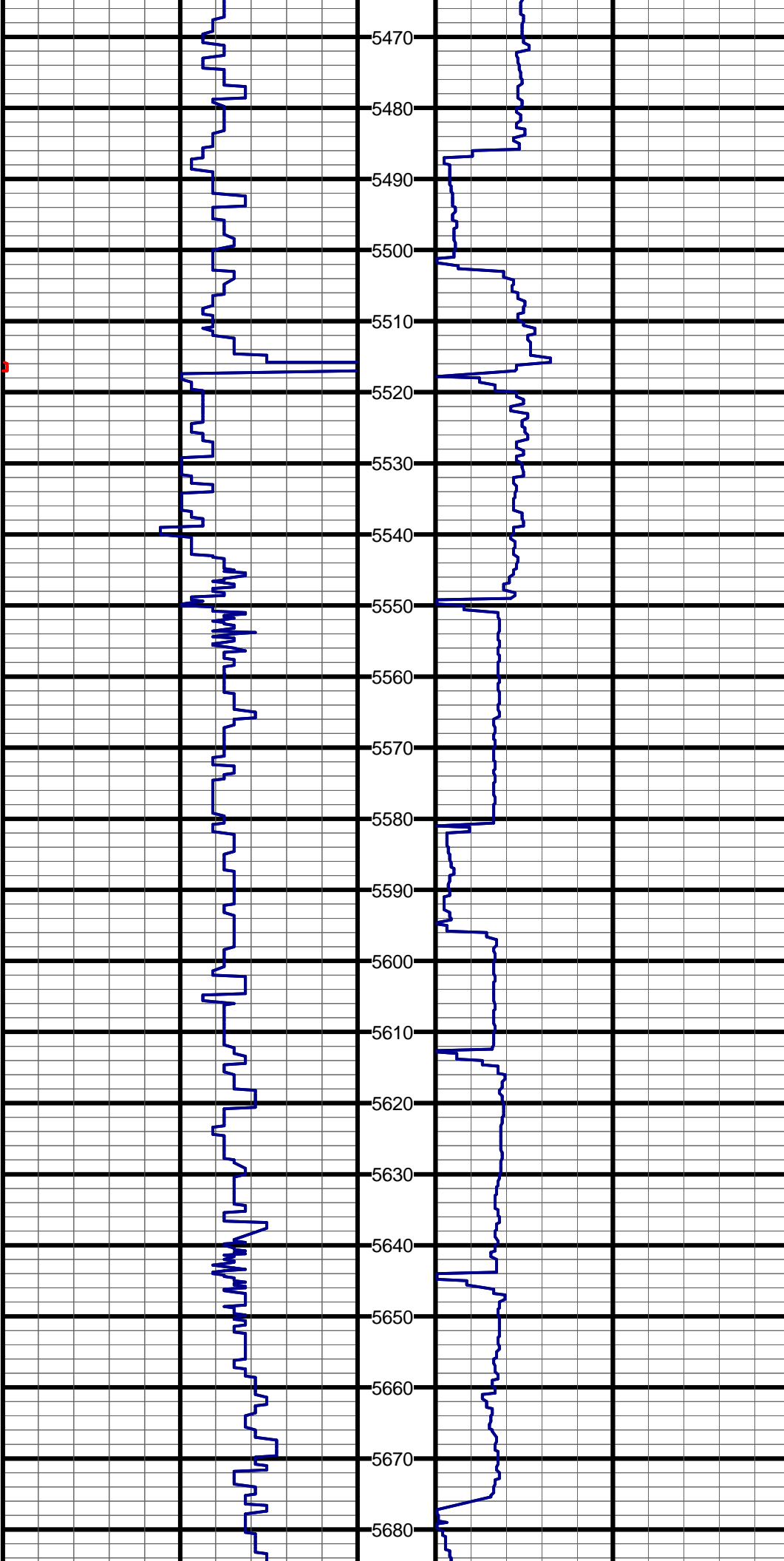
#57 MD:5246.0 TVD:5197.6 I:8.1 A:228.7 VS:-517.5



#57 MD:5246.0 TVD:5197.6 I:6.1 A:226.7 VS:-517.3

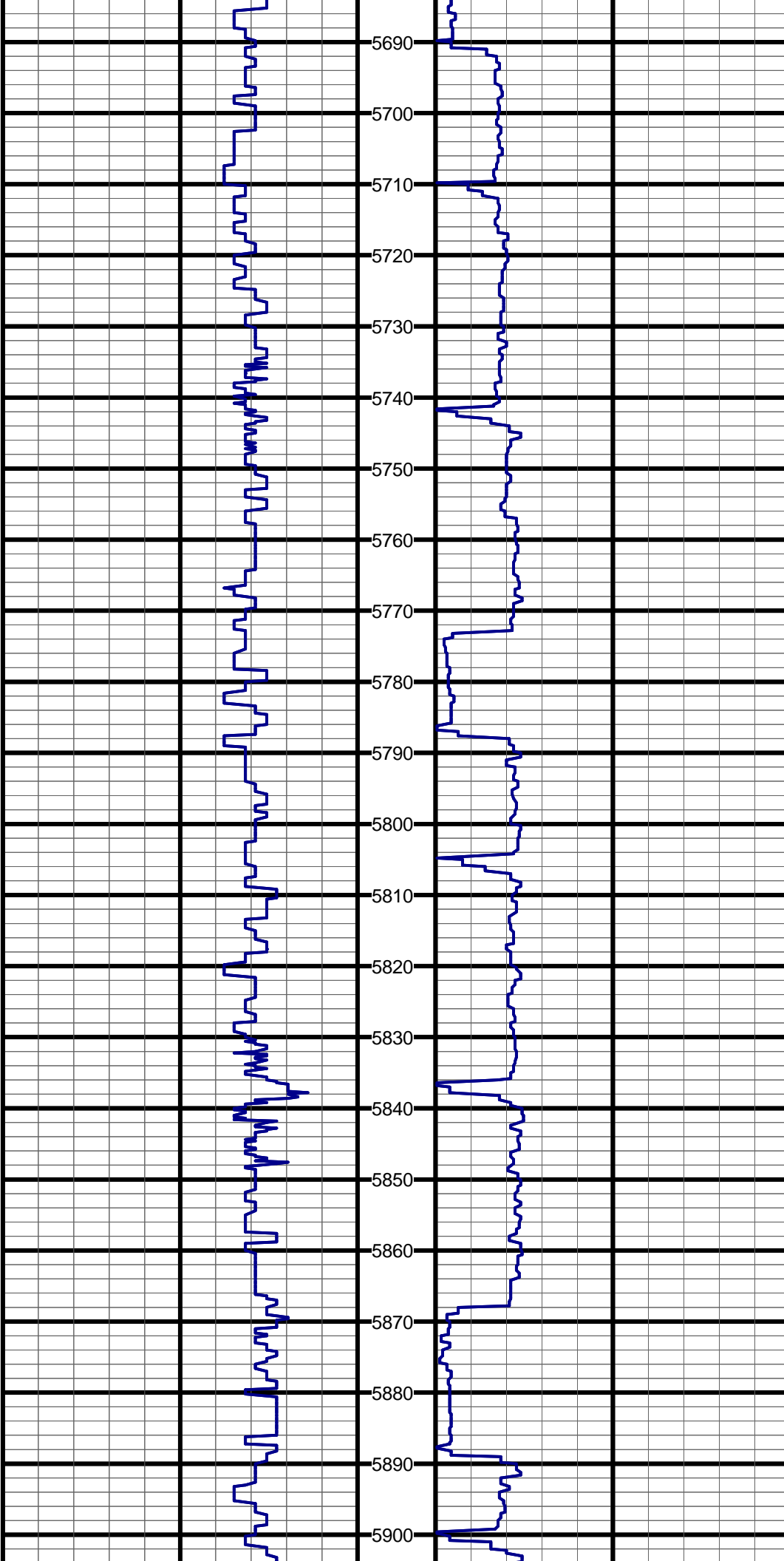
#58 MD:5341.0 TVD:5291.6 I:8.6 A:225.1 VS:-526.9

#59 MD:5436.0 TVD:5385.7 I:6.7 A:222.4 VS:-536.0



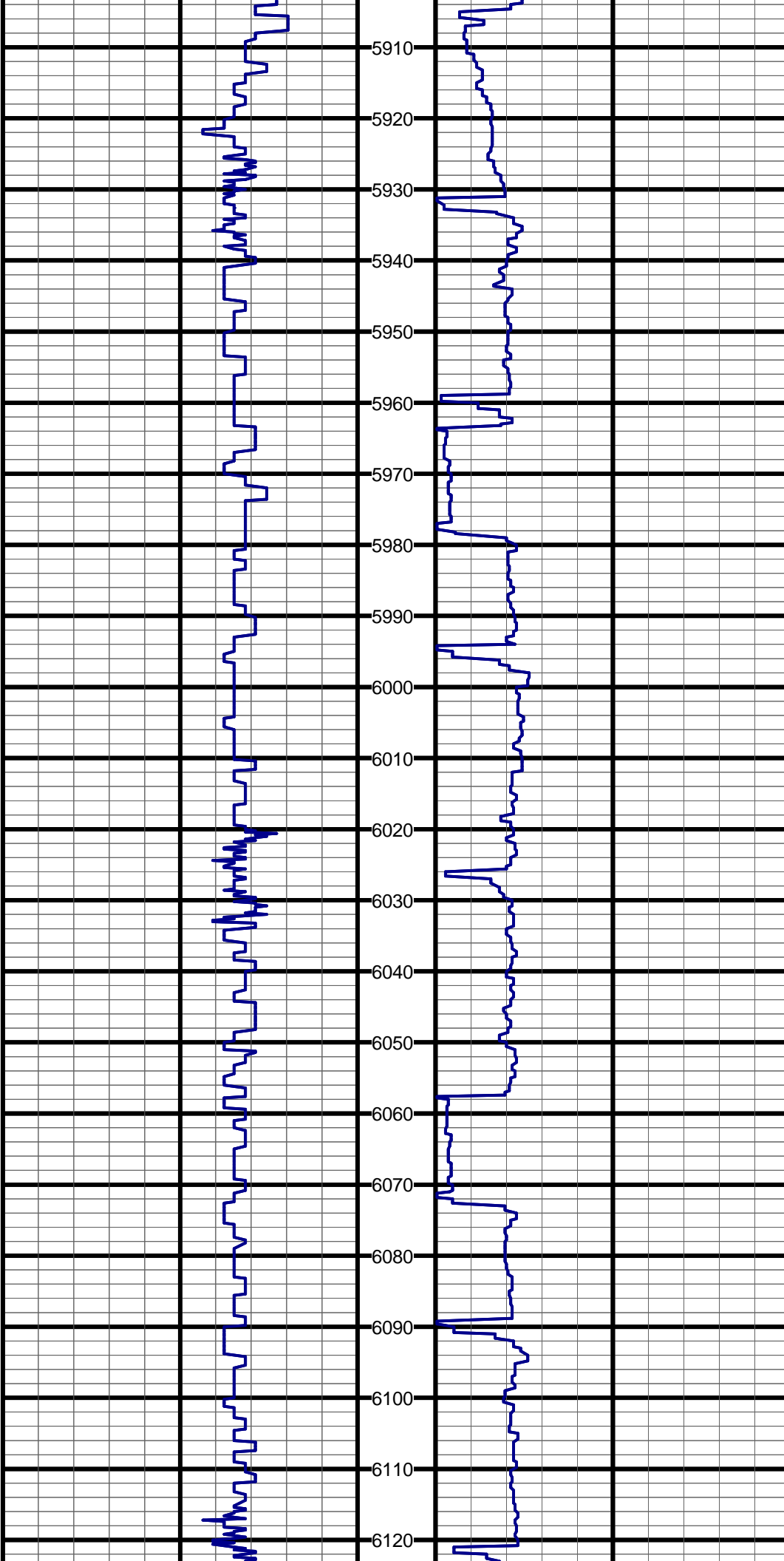
#60 MD:5532.0 TVD:5481.0 I:7.6 A:220.4 VS:-545.0

#61 MD:5627.0 TVD:5575.1 I:8.3 A:220.7 VS:-555.0



#62 MD:5722.0 TVD:5669.1 I:8.0 A:216.8 VS:-565.5

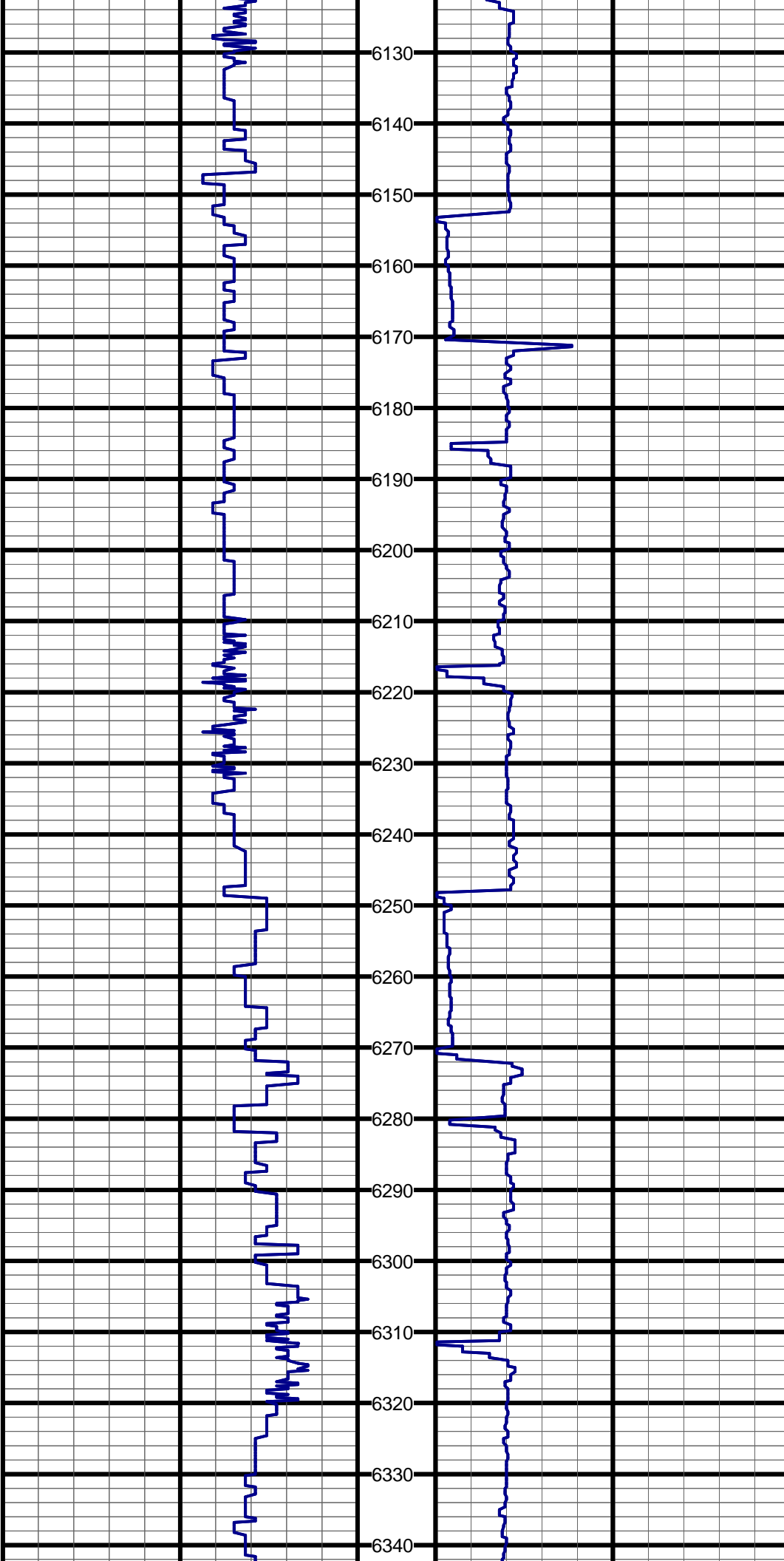
#63 MD:5817.0 TVD:5763.1 I:8.6 A:215.6 VS:-576.5



#64 MD:5912.0 TVD:5857.1 I:8.4 A:217.0 VS:-587.9

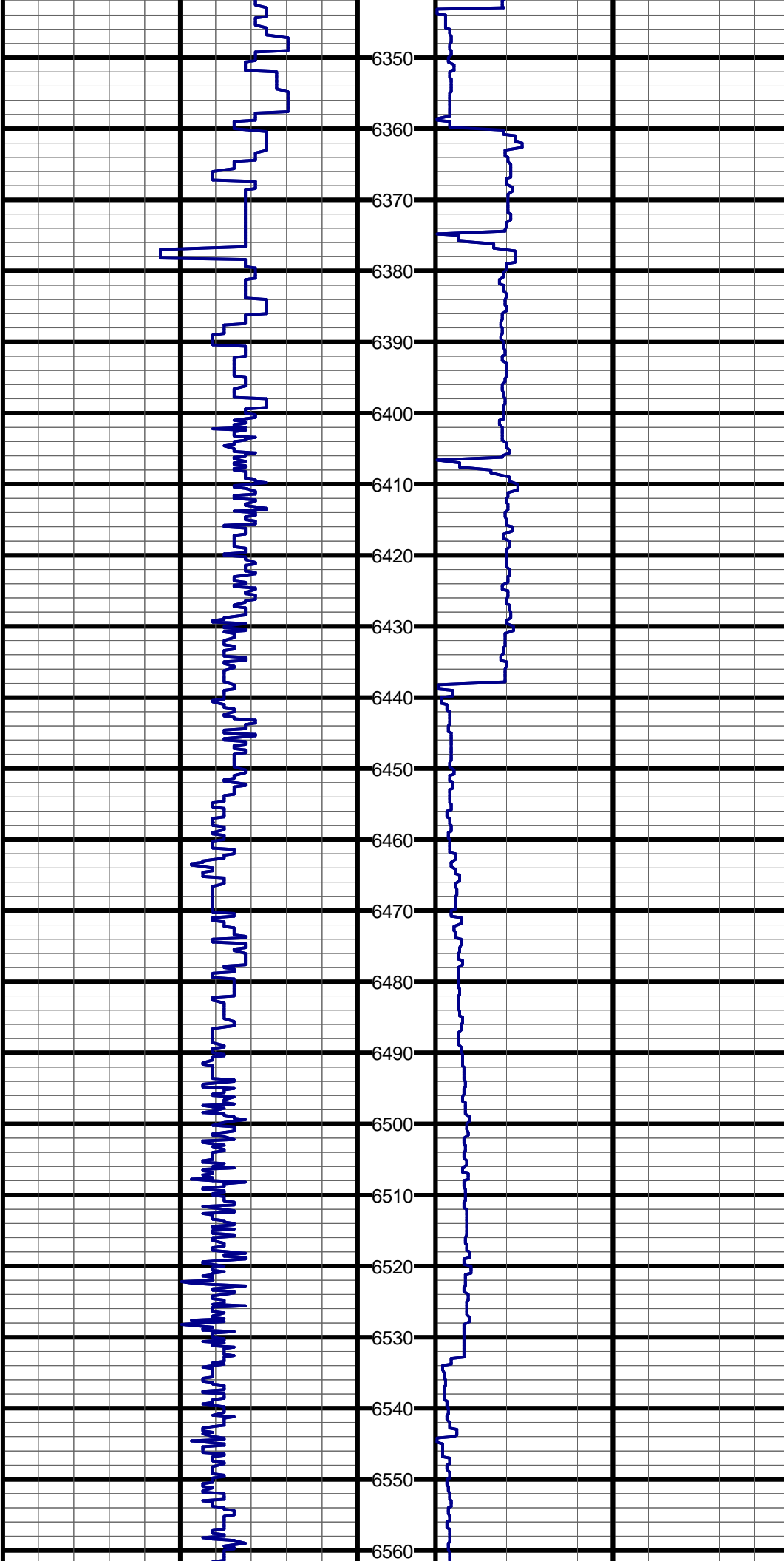
#65 MD:6008.0 TVD:5952.1 I:8.2 A:216.1 VS:-599.0

#66 MD:6103.0 TVD:6046.1 I:8.4 A:218.4 VS:-609.9



#67 MD:6198.0 TVD:6140.2 I:7.0 A:226.5 VS:-619.3

#68 MD:6293.0 TVD:6234.8 I:3.5 A:221.4 VS:-625.5



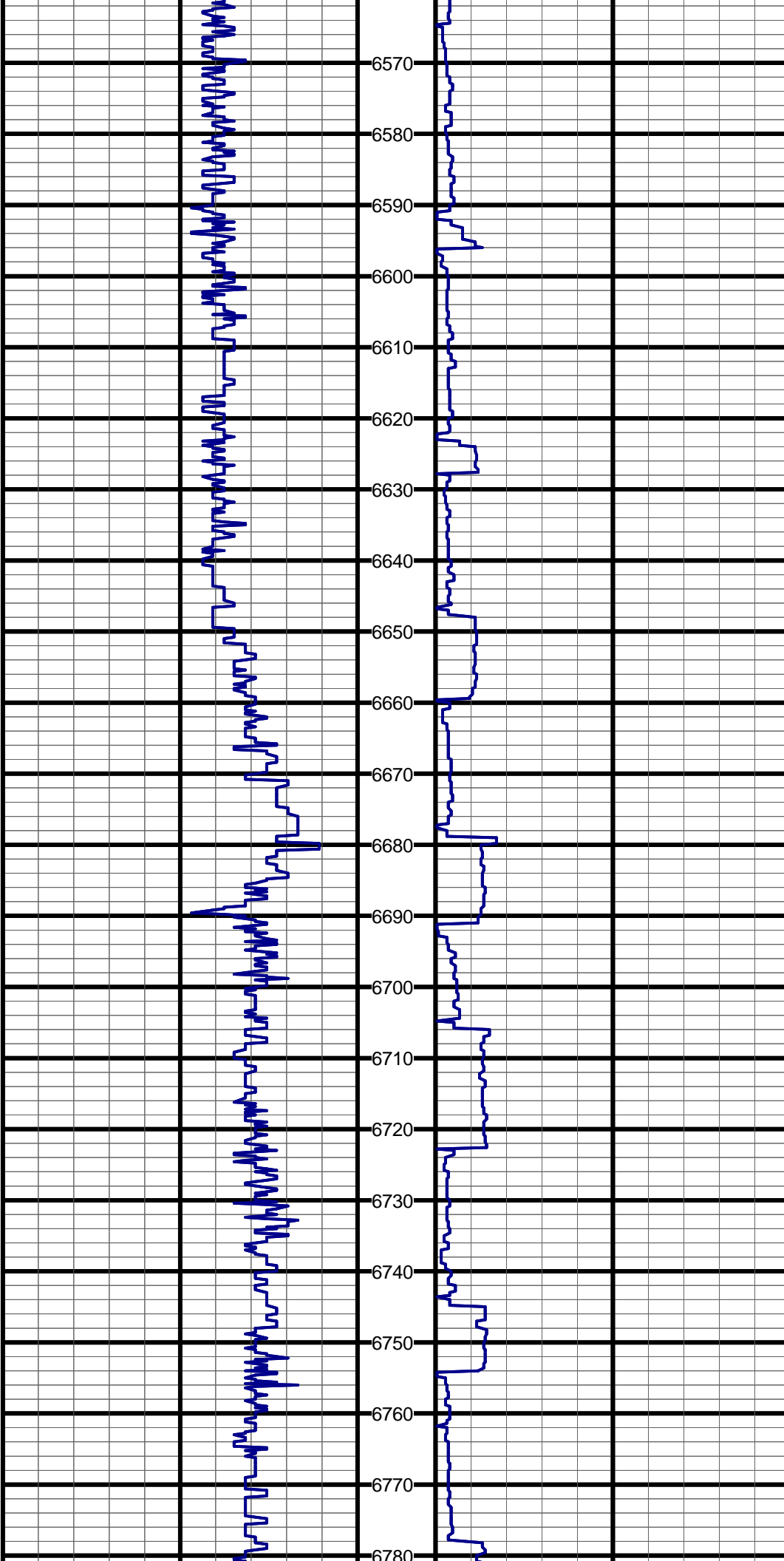
#69 MD:6388.0 TVD:6329.7 I:1.4 A:228.4 VS:-628.4

#70 MD:6451.0 TVD:6392.7 I:0.9 A:328.1 VS:-628.5

#71 MD:6483.0 TVD:6424.6 I:4.4 A:348.4 VS:-627.1

#72 MD:6515.0 TVD:6456.5 I:8.0 A:356.8 VS:-623.7

#73 MD:6547.0 TVD:6488.0 I:11.6 A:357.5 VS:-618.2



#74 MD:6578.0 TVD:6518.2 I:14.6 A:355.3 VS:-611.2

#75 MD:6610.0 TVD:6548.9 I:17.8 A:353.8 VS:-602.4

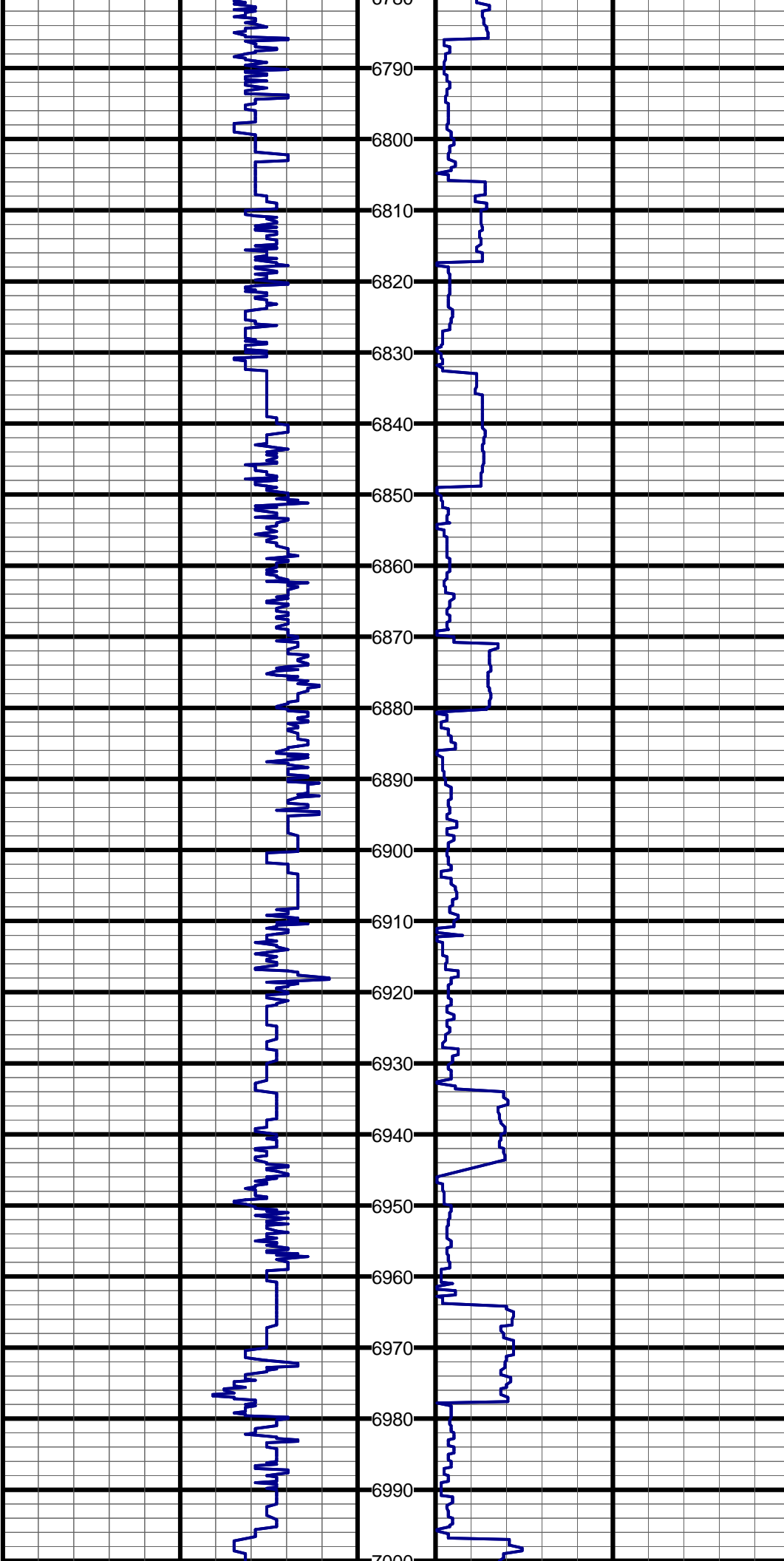
#76 MD:6642.0 TVD:6579.1 I:20.7 A:354.2 VS:-591.9

#77 MD:6674.0 TVD:6608.8 I:23.0 A:353.7 VS:-580.0

#78 MD:6705.0 TVD:6637.2 I:24.5 A:354.8 VS:-567.6

#79 MD:6737.0 TVD:6666.1 I:26.3 A:355.6 VS:-553.9

#80 MD:6769.0 TVD:6694.5 I:28.8 A:355.9 VS:-539.2



#81 MD:6800.0 TVD:6721.3 I:31.3 A:358.0 VS:-523.7

#82 MD:6832.0 TVD:6748.4 I:32.7 A:0.4 VS:-506.7

#83 MD:6864.0 TVD:6775.1 I:34.4 A:1.3 VS:-489.0

#84 MD:6896.0 TVD:6801.1 I:36.9 A:1.8 VS:-470.4

#85 MD:6927.0 TVD:6825.4 I:39.8 A:1.5 VS:-451.2

#86 MD:6959.0 TVD:6849.6 I:42.1 A:0.5 VS:-430.2

#87 MD:6991.0 TVD:6873.0 I:43.9 A:359.5 VS:-408.4

