

PETROLEUM DEVELOPMENT CORP Weld County CO

Well Name: Diana 6T-401

Surface Location: Diana 6T-HZ Pad Sec.6-T6N-R65W
North American Datum 1983 , US State Plane 1983 , Colorado Northern Zone

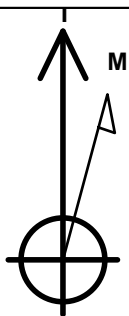
Ground Elevation: 4795.0

+N/-S	+E/-W	Northing	Easting	Latitude	Longitude	Slot
0.0	0.0	1429836.03	3221488.17	40.510570	-104.703430	

RKB -15' WELL @ 4810.0ft (RKB -15')

WELLBORE TARGET DETAILS

Name	TVD	+N/-S	+E/-W	Shape Point
BHL 500'FNL, 1426'FEL	7209.0	4528.5	403.1	



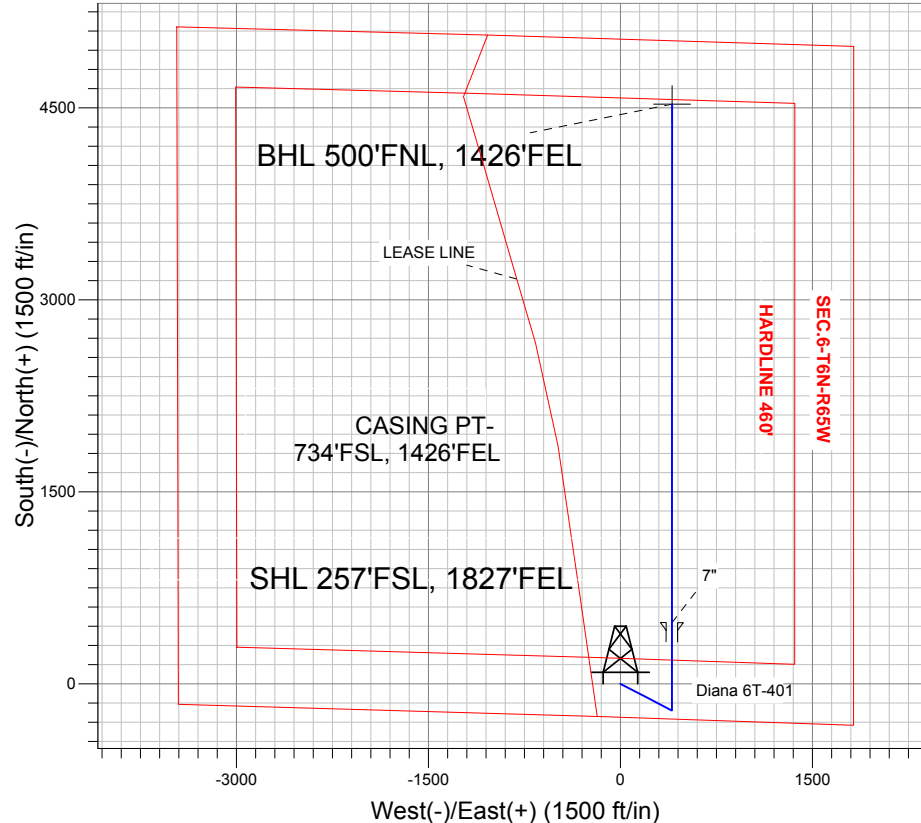
Azimuths to True North
Magnetic North: 8.62°

Magnetic Field
Strength: 53025.8snT
Dip Angle: 67.09°
Date: 1/25/2013
Model: IGRF2010

ANNOTATIONS

TVD	MD	Annotation
1000.0	1000.0	KOP #1
6446.3	6469.9	KOP #2
7220.0	7787.2	End of Build

Diana 6T-HZ Pad Sec.6-T6N-R65W
Diana 6T-401
Plan #1 (1-25-13)
13:36, January 25 2013



ENSIGN
Directional

SECTION DETAILS

Sec	MD	Inc	Azi	TVD	+N/-S	+E/-W	DLeg	TFace	VSec	Target
1	0.0	0.00	0.00	0.0	0.0	0.0	0.00	0.00	0.0	
2	1000.0	0.00	0.00	1000.0	0.0	0.0	0.00	0.00	0.0	
3	1307.2	6.14	117.30	1306.6	-7.5	14.6	2.00	117.30	-6.2	
4	5216.4	6.14	117.30	5193.4	-199.5	386.4	0.00	0.00	-164.4	
5	5523.6	0.00	0.00	5500.0	-207.0	401.0	2.00	180.00	-170.6	
6	6469.9	0.00	0.00	6446.3	-207.0	401.0	0.00	0.00	-170.6	
7	7589.9	84.00	0.03	7206.0	477.1	401.4	7.50	0.03	510.8	
8	7663.9	84.00	0.03	7213.8	550.7	401.4	0.00	0.00	584.1	
9	7787.2	90.16	0.02	7220.0	673.7	401.5	5.00	-0.05	706.7	
10	11642.0	90.16	0.02	7209.0	4528.5	403.1	0.00	0.00	4546.4	BHL 500'FNL, 1426'FEL

BHL 500'FNL, 1426'FEL

End of Build

Vertical Section at 5.09° (600 ft/in)



PETROLEUM DEVELOPMENT CORP Weld County CO

SEC.6-T6N-R65W

Diana 6T-HZ Pad Sec.6-T6N-R65W

Diana 6T-401

Wellbore #1

Plan: Plan #1 (1-25-13)

Standard Planning Report

25 January, 2013

Plan Sections										
Measured Depth (ft)	Inclination (°)	Azimuth (°)	Vertical Depth (ft)	+N/-S (ft)	+E/-W (ft)	Dogleg Rate (°/100ft)	Build Rate (°/100ft)	Turn Rate (°/100ft)	TFO (°)	Target
0.0	0.00	0.00	0.0	0.0	0.0	0.00	0.00	0.00	0.00	
1,000.0	0.00	0.00	1,000.0	0.0	0.0	0.00	0.00	0.00	0.00	
1,307.2	6.14	117.30	1,306.6	-7.5	14.6	2.00	2.00	0.00	117.30	
5,216.4	6.14	117.30	5,193.4	-199.5	386.4	0.00	0.00	0.00	0.00	
5,523.6	0.00	0.00	5,500.0	-207.0	401.0	2.00	-2.00	0.00	180.00	
6,469.9	0.00	0.00	6,446.3	-207.0	401.0	0.00	0.00	0.00	0.00	
7,589.9	84.00	0.03	7,206.0	477.1	401.4	7.50	7.50	0.00	0.03	
7,663.9	84.00	0.03	7,213.8	550.7	401.4	0.00	0.00	0.00	0.00	
7,787.2	90.16	0.02	7,220.0	673.7	401.5	5.00	5.00	0.00	-0.05	
11,642.0	90.16	0.02	7,209.0	4,528.5	403.1	0.00	0.00	0.00	0.00	BHL 500'FNL, 1426

Database:	Landmark	Local Co-ordinate Reference:	Well Diana 6T-401
Company:	PETROLEUM DEVELOPMENT CORP Weld County CO	TVD Reference:	WELL @ 4810.0ft (RKB -15')
Project:	SEC.6-T6N-R65W	MD Reference:	WELL @ 4810.0ft (RKB -15')
Site:	Diana 6T-HZ Pad Sec.6-T6N-R65W	North Reference:	True
Well:	Diana 6T-401	Survey Calculation Method:	Minimum Curvature
Wellbore:	Wellbore #1		
Design:	Plan #1 (1-25-13)		

Planned Survey									
Measured Depth (ft)	Inclination (°)	Azimuth (°)	Vertical Depth (ft)	+N/-S (ft)	+E/-W (ft)	Vertical Section (ft)	Dogleg Rate (°/100ft)	Build Rate (°/100ft)	Turn Rate (°/100ft)
0.0	0.00	0.00	0.0	0.0	0.0	0.0	0.00	0.00	0.00
40.0	0.00	0.00	40.0	0.0	0.0	0.0	0.00	0.00	0.00
80.0	0.00	0.00	80.0	0.0	0.0	0.0	0.00	0.00	0.00
120.0	0.00	0.00	120.0	0.0	0.0	0.0	0.00	0.00	0.00
160.0	0.00	0.00	160.0	0.0	0.0	0.0	0.00	0.00	0.00
200.0	0.00	0.00	200.0	0.0	0.0	0.0	0.00	0.00	0.00
240.0	0.00	0.00	240.0	0.0	0.0	0.0	0.00	0.00	0.00
280.0	0.00	0.00	280.0	0.0	0.0	0.0	0.00	0.00	0.00
320.0	0.00	0.00	320.0	0.0	0.0	0.0	0.00	0.00	0.00
360.0	0.00	0.00	360.0	0.0	0.0	0.0	0.00	0.00	0.00
400.0	0.00	0.00	400.0	0.0	0.0	0.0	0.00	0.00	0.00
440.0	0.00	0.00	440.0	0.0	0.0	0.0	0.00	0.00	0.00
480.0	0.00	0.00	480.0	0.0	0.0	0.0	0.00	0.00	0.00
520.0	0.00	0.00	520.0	0.0	0.0	0.0	0.00	0.00	0.00
560.0	0.00	0.00	560.0	0.0	0.0	0.0	0.00	0.00	0.00
600.0	0.00	0.00	600.0	0.0	0.0	0.0	0.00	0.00	0.00
640.0	0.00	0.00	640.0	0.0	0.0	0.0	0.00	0.00	0.00
680.0	0.00	0.00	680.0	0.0	0.0	0.0	0.00	0.00	0.00
720.0	0.00	0.00	720.0	0.0	0.0	0.0	0.00	0.00	0.00
760.0	0.00	0.00	760.0	0.0	0.0	0.0	0.00	0.00	0.00
800.0	0.00	0.00	800.0	0.0	0.0	0.0	0.00	0.00	0.00
840.0	0.00	0.00	840.0	0.0	0.0	0.0	0.00	0.00	0.00
880.0	0.00	0.00	880.0	0.0	0.0	0.0	0.00	0.00	0.00
920.0	0.00	0.00	920.0	0.0	0.0	0.0	0.00	0.00	0.00
960.0	0.00	0.00	960.0	0.0	0.0	0.0	0.00	0.00	0.00
1,000.0	0.00	0.00	1,000.0	0.0	0.0	0.0	0.00	0.00	0.00
1,040.0	0.80	117.30	1,040.0	-0.1	0.2	-0.1	2.00	2.00	0.00
1,080.0	1.60	117.30	1,080.0	-0.5	1.0	-0.4	2.00	2.00	0.00
1,120.0	2.40	117.30	1,120.0	-1.2	2.2	-1.0	2.00	2.00	0.00
1,160.0	3.20	117.30	1,159.9	-2.0	4.0	-1.7	2.00	2.00	0.00
1,200.0	4.00	117.30	1,199.8	-3.2	6.2	-2.6	2.00	2.00	0.00
1,240.0	4.80	117.30	1,239.7	-4.6	8.9	-3.8	2.00	2.00	0.00
1,280.0	5.60	117.30	1,279.6	-6.3	12.1	-5.2	2.00	2.00	0.00
1,307.2	6.14	117.30	1,306.6	-7.5	14.6	-6.2	2.00	2.00	0.00
1,320.0	6.14	117.30	1,319.3	-8.2	15.8	-6.7	0.00	0.00	0.00
1,360.0	6.14	117.30	1,359.1	-10.1	19.6	-8.4	0.00	0.00	0.00
1,400.0	6.14	117.30	1,398.9	-12.1	23.4	-10.0	0.00	0.00	0.00
1,440.0	6.14	117.30	1,438.6	-14.1	27.3	-11.6	0.00	0.00	0.00
1,480.0	6.14	117.30	1,478.4	-16.0	31.1	-13.2	0.00	0.00	0.00
1,520.0	6.14	117.30	1,518.2	-18.0	34.9	-14.8	0.00	0.00	0.00
1,560.0	6.14	117.30	1,558.0	-20.0	38.7	-16.5	0.00	0.00	0.00
1,600.0	6.14	117.30	1,597.7	-21.9	42.5	-18.1	0.00	0.00	0.00
1,640.0	6.14	117.30	1,637.5	-23.9	46.3	-19.7	0.00	0.00	0.00
1,680.0	6.14	117.30	1,677.3	-25.8	50.1	-21.3	0.00	0.00	0.00
1,720.0	6.14	117.30	1,717.0	-27.8	53.9	-22.9	0.00	0.00	0.00
1,760.0	6.14	117.30	1,756.8	-29.8	57.7	-24.5	0.00	0.00	0.00
1,800.0	6.14	117.30	1,796.6	-31.7	61.5	-26.2	0.00	0.00	0.00
1,840.0	6.14	117.30	1,836.4	-33.7	65.3	-27.8	0.00	0.00	0.00
1,880.0	6.14	117.30	1,876.1	-35.7	69.1	-29.4	0.00	0.00	0.00
1,920.0	6.14	117.30	1,915.9	-37.6	72.9	-31.0	0.00	0.00	0.00
1,960.0	6.14	117.30	1,955.7	-39.6	76.7	-32.6	0.00	0.00	0.00
2,000.0	6.14	117.30	1,995.4	-41.6	80.5	-34.3	0.00	0.00	0.00
2,040.0	6.14	117.30	2,035.2	-43.5	84.3	-35.9	0.00	0.00	0.00

Database:	Landmark	Local Co-ordinate Reference:	Well Diana 6T-401
Company:	PETROLEUM DEVELOPMENT CORP Weld County CO	TVD Reference:	WELL @ 4810.0ft (RKB -15')
Project:	SEC.6-T6N-R65W	MD Reference:	WELL @ 4810.0ft (RKB -15')
Site:	Diana 6T-HZ Pad Sec.6-T6N-R65W	North Reference:	True
Well:	Diana 6T-401	Survey Calculation Method:	Minimum Curvature
Wellbore:	Wellbore #1		
Design:	Plan #1 (1-25-13)		

Planned Survey										
Measured Depth (ft)	Inclination (°)	Azimuth (°)	Vertical Depth (ft)	+N/-S (ft)	+E/-W (ft)	Vertical Section (ft)	Dogleg Rate (°/100ft)	Build Rate (°/100ft)	Turn Rate (°/100ft)	
2,080.0	6.14	117.30	2,075.0	-45.5	88.1	-37.5	0.00	0.00	0.00	
2,120.0	6.14	117.30	2,114.7	-47.4	91.9	-39.1	0.00	0.00	0.00	
2,160.0	6.14	117.30	2,154.5	-49.4	95.7	-40.7	0.00	0.00	0.00	
2,200.0	6.14	117.30	2,194.3	-51.4	99.5	-42.3	0.00	0.00	0.00	
2,240.0	6.14	117.30	2,234.1	-53.3	103.3	-44.0	0.00	0.00	0.00	
2,280.0	6.14	117.30	2,273.8	-55.3	107.1	-45.6	0.00	0.00	0.00	
2,320.0	6.14	117.30	2,313.6	-57.3	110.9	-47.2	0.00	0.00	0.00	
2,360.0	6.14	117.30	2,353.4	-59.2	114.7	-48.8	0.00	0.00	0.00	
2,400.0	6.14	117.30	2,393.1	-61.2	118.5	-50.4	0.00	0.00	0.00	
2,440.0	6.14	117.30	2,432.9	-63.2	122.3	-52.1	0.00	0.00	0.00	
2,480.0	6.14	117.30	2,472.7	-65.1	126.2	-53.7	0.00	0.00	0.00	
2,520.0	6.14	117.30	2,512.4	-67.1	130.0	-55.3	0.00	0.00	0.00	
2,560.0	6.14	117.30	2,552.2	-69.0	133.8	-56.9	0.00	0.00	0.00	
2,600.0	6.14	117.30	2,592.0	-71.0	137.6	-58.5	0.00	0.00	0.00	
2,640.0	6.14	117.30	2,631.8	-73.0	141.4	-60.2	0.00	0.00	0.00	
2,680.0	6.14	117.30	2,671.5	-74.9	145.2	-61.8	0.00	0.00	0.00	
2,720.0	6.14	117.30	2,711.3	-76.9	149.0	-63.4	0.00	0.00	0.00	
2,760.0	6.14	117.30	2,751.1	-78.9	152.8	-65.0	0.00	0.00	0.00	
2,800.0	6.14	117.30	2,790.8	-80.8	156.6	-66.6	0.00	0.00	0.00	
2,840.0	6.14	117.30	2,830.6	-82.8	160.4	-68.2	0.00	0.00	0.00	
2,880.0	6.14	117.30	2,870.4	-84.8	164.2	-69.9	0.00	0.00	0.00	
2,920.0	6.14	117.30	2,910.1	-86.7	168.0	-71.5	0.00	0.00	0.00	
2,960.0	6.14	117.30	2,949.9	-88.7	171.8	-73.1	0.00	0.00	0.00	
3,000.0	6.14	117.30	2,989.7	-90.6	175.6	-74.7	0.00	0.00	0.00	
3,040.0	6.14	117.30	3,029.5	-92.6	179.4	-76.3	0.00	0.00	0.00	
3,080.0	6.14	117.30	3,069.2	-94.6	183.2	-78.0	0.00	0.00	0.00	
3,120.0	6.14	117.30	3,109.0	-96.5	187.0	-79.6	0.00	0.00	0.00	
3,160.0	6.14	117.30	3,148.8	-98.5	190.8	-81.2	0.00	0.00	0.00	
3,200.0	6.14	117.30	3,188.5	-100.5	194.6	-82.8	0.00	0.00	0.00	
3,240.0	6.14	117.30	3,228.3	-102.4	198.4	-84.4	0.00	0.00	0.00	
3,280.0	6.14	117.30	3,268.1	-104.4	202.2	-86.1	0.00	0.00	0.00	
3,320.0	6.14	117.30	3,307.9	-106.4	206.0	-87.7	0.00	0.00	0.00	
3,360.0	6.14	117.30	3,347.6	-108.3	209.8	-89.3	0.00	0.00	0.00	
3,400.0	6.14	117.30	3,387.4	-110.3	213.6	-90.9	0.00	0.00	0.00	
3,440.0	6.14	117.30	3,427.2	-112.2	217.4	-92.5	0.00	0.00	0.00	
3,480.0	6.14	117.30	3,466.9	-114.2	221.2	-94.1	0.00	0.00	0.00	
3,520.0	6.14	117.30	3,506.7	-116.2	225.1	-95.8	0.00	0.00	0.00	
3,560.0	6.14	117.30	3,546.5	-118.1	228.9	-97.4	0.00	0.00	0.00	
3,600.0	6.14	117.30	3,586.2	-120.1	232.7	-99.0	0.00	0.00	0.00	
3,640.0	6.14	117.30	3,626.0	-122.1	236.5	-100.6	0.00	0.00	0.00	
3,680.0	6.14	117.30	3,665.8	-124.0	240.3	-102.2	0.00	0.00	0.00	
3,720.0	6.14	117.30	3,705.6	-126.0	244.1	-103.9	0.00	0.00	0.00	
3,760.0	6.14	117.30	3,745.3	-128.0	247.9	-105.5	0.00	0.00	0.00	
3,800.0	6.14	117.30	3,785.1	-129.9	251.7	-107.1	0.00	0.00	0.00	
3,840.0	6.14	117.30	3,824.9	-131.9	255.5	-108.7	0.00	0.00	0.00	
3,880.0	6.14	117.30	3,864.6	-133.8	259.3	-110.3	0.00	0.00	0.00	
3,920.0	6.14	117.30	3,904.4	-135.8	263.1	-111.9	0.00	0.00	0.00	
3,960.0	6.14	117.30	3,944.2	-137.8	266.9	-113.6	0.00	0.00	0.00	
4,000.0	6.14	117.30	3,983.9	-139.7	270.7	-115.2	0.00	0.00	0.00	
4,040.0	6.14	117.30	4,023.7	-141.7	274.5	-116.8	0.00	0.00	0.00	
4,080.0	6.14	117.30	4,063.5	-143.7	278.3	-118.4	0.00	0.00	0.00	
4,120.0	6.14	117.30	4,103.3	-145.6	282.1	-120.0	0.00	0.00	0.00	
4,160.0	6.14	117.30	4,143.0	-147.6	285.9	-121.7	0.00	0.00	0.00	

Database:	Landmark	Local Co-ordinate Reference:	Well Diana 6T-401
Company:	PETROLEUM DEVELOPMENT CORP Weld County CO	TVD Reference:	WELL @ 4810.0ft (RKB -15')
Project:	SEC.6-T6N-R65W	MD Reference:	WELL @ 4810.0ft (RKB -15')
Site:	Diana 6T-HZ Pad Sec.6-T6N-R65W	North Reference:	True
Well:	Diana 6T-401	Survey Calculation Method:	Minimum Curvature
Wellbore:	Wellbore #1		
Design:	Plan #1 (1-25-13)		

Planned Survey										
Measured Depth (ft)	Inclination (°)	Azimuth (°)	Vertical Depth (ft)	+N/-S (ft)	+E/-W (ft)	Vertical Section (ft)	Dogleg Rate (°/100ft)	Build Rate (°/100ft)	Turn Rate (°/100ft)	
4,200.0	6.14	117.30	4,182.8	-149.6	289.7	-123.3	0.00	0.00	0.00	
4,240.0	6.14	117.30	4,222.6	-151.5	293.5	-124.9	0.00	0.00	0.00	
4,280.0	6.14	117.30	4,262.3	-153.5	297.3	-126.5	0.00	0.00	0.00	
4,320.0	6.14	117.30	4,302.1	-155.4	301.1	-128.1	0.00	0.00	0.00	
4,360.0	6.14	117.30	4,341.9	-157.4	304.9	-129.8	0.00	0.00	0.00	
4,400.0	6.14	117.30	4,381.6	-159.4	308.7	-131.4	0.00	0.00	0.00	
4,440.0	6.14	117.30	4,421.4	-161.3	312.5	-133.0	0.00	0.00	0.00	
4,480.0	6.14	117.30	4,461.2	-163.3	316.3	-134.6	0.00	0.00	0.00	
4,520.0	6.14	117.30	4,501.0	-165.3	320.1	-136.2	0.00	0.00	0.00	
4,560.0	6.14	117.30	4,540.7	-167.2	324.0	-137.8	0.00	0.00	0.00	
4,600.0	6.14	117.30	4,580.5	-169.2	327.8	-139.5	0.00	0.00	0.00	
4,640.0	6.14	117.30	4,620.3	-171.2	331.6	-141.1	0.00	0.00	0.00	
4,680.0	6.14	117.30	4,660.0	-173.1	335.4	-142.7	0.00	0.00	0.00	
4,720.0	6.14	117.30	4,699.8	-175.1	339.2	-144.3	0.00	0.00	0.00	
4,760.0	6.14	117.30	4,739.6	-177.0	343.0	-145.9	0.00	0.00	0.00	
4,800.0	6.14	117.30	4,779.4	-179.0	346.8	-147.6	0.00	0.00	0.00	
4,840.0	6.14	117.30	4,819.1	-181.0	350.6	-149.2	0.00	0.00	0.00	
4,880.0	6.14	117.30	4,858.9	-182.9	354.4	-150.8	0.00	0.00	0.00	
4,920.0	6.14	117.30	4,898.7	-184.9	358.2	-152.4	0.00	0.00	0.00	
4,960.0	6.14	117.30	4,938.4	-186.9	362.0	-154.0	0.00	0.00	0.00	
5,000.0	6.14	117.30	4,978.2	-188.8	365.8	-155.6	0.00	0.00	0.00	
5,040.0	6.14	117.30	5,018.0	-190.8	369.6	-157.3	0.00	0.00	0.00	
5,080.0	6.14	117.30	5,057.7	-192.8	373.4	-158.9	0.00	0.00	0.00	
5,120.0	6.14	117.30	5,097.5	-194.7	377.2	-160.5	0.00	0.00	0.00	
5,160.0	6.14	117.30	5,137.3	-196.7	381.0	-162.1	0.00	0.00	0.00	
5,200.0	6.14	117.30	5,177.1	-198.6	384.8	-163.7	0.00	0.00	0.00	
5,216.4	6.14	117.30	5,193.4	-199.5	386.4	-164.4	0.00	0.00	0.00	
5,240.0	5.67	117.30	5,216.8	-200.6	388.5	-165.3	2.00	-2.00	0.00	
5,280.0	4.87	117.30	5,256.7	-202.3	391.8	-166.7	2.00	-2.00	0.00	
5,320.0	4.07	117.30	5,296.5	-203.7	394.6	-167.9	2.00	-2.00	0.00	
5,360.0	3.27	117.30	5,336.5	-204.9	396.8	-168.9	2.00	-2.00	0.00	
5,400.0	2.47	117.30	5,376.4	-205.8	398.6	-169.6	2.00	-2.00	0.00	
5,440.0	1.67	117.30	5,416.4	-206.4	399.9	-170.2	2.00	-2.00	0.00	
5,480.0	0.87	117.30	5,456.4	-206.8	400.7	-170.5	2.00	-2.00	0.00	
5,520.0	0.07	117.30	5,496.4	-207.0	401.0	-170.6	2.00	-2.00	0.00	
5,523.6	0.00	0.00	5,500.0	-207.0	401.0	-170.6	2.00	-2.00	0.00	
5,560.0	0.00	0.00	5,536.4	-207.0	401.0	-170.6	0.00	0.00	0.00	
5,600.0	0.00	0.00	5,576.4	-207.0	401.0	-170.6	0.00	0.00	0.00	
5,640.0	0.00	0.00	5,616.4	-207.0	401.0	-170.6	0.00	0.00	0.00	
5,680.0	0.00	0.00	5,656.4	-207.0	401.0	-170.6	0.00	0.00	0.00	
5,720.0	0.00	0.00	5,696.4	-207.0	401.0	-170.6	0.00	0.00	0.00	
5,760.0	0.00	0.00	5,736.4	-207.0	401.0	-170.6	0.00	0.00	0.00	
5,800.0	0.00	0.00	5,776.4	-207.0	401.0	-170.6	0.00	0.00	0.00	
5,840.0	0.00	0.00	5,816.4	-207.0	401.0	-170.6	0.00	0.00	0.00	
5,880.0	0.00	0.00	5,856.4	-207.0	401.0	-170.6	0.00	0.00	0.00	
5,920.0	0.00	0.00	5,896.4	-207.0	401.0	-170.6	0.00	0.00	0.00	
5,960.0	0.00	0.00	5,936.4	-207.0	401.0	-170.6	0.00	0.00	0.00	
6,000.0	0.00	0.00	5,976.4	-207.0	401.0	-170.6	0.00	0.00	0.00	
6,040.0	0.00	0.00	6,016.4	-207.0	401.0	-170.6	0.00	0.00	0.00	
6,080.0	0.00	0.00	6,056.4	-207.0	401.0	-170.6	0.00	0.00	0.00	
6,120.0	0.00	0.00	6,096.4	-207.0	401.0	-170.6	0.00	0.00	0.00	
6,160.0	0.00	0.00	6,136.4	-207.0	401.0	-170.6	0.00	0.00	0.00	
6,200.0	0.00	0.00	6,176.4	-207.0	401.0	-170.6	0.00	0.00	0.00	

Database:	Landmark	Local Co-ordinate Reference:	Well Diana 6T-401
Company:	PETROLEUM DEVELOPMENT CORP Weld County CO	TVD Reference:	WELL @ 4810.0ft (RKB -15')
Project:	SEC.6-T6N-R65W	MD Reference:	WELL @ 4810.0ft (RKB -15')
Site:	Diana 6T-HZ Pad Sec.6-T6N-R65W	North Reference:	True
Well:	Diana 6T-401	Survey Calculation Method:	Minimum Curvature
Wellbore:	Wellbore #1		
Design:	Plan #1 (1-25-13)		

Planned Survey									
Measured Depth (ft)	Inclination (°)	Azimuth (°)	Vertical Depth (ft)	+N/-S (ft)	+E/-W (ft)	Vertical Section (ft)	Dogleg Rate (°/100ft)	Build Rate (°/100ft)	Turn Rate (°/100ft)
6,240.0	0.00	0.00	6,216.4	-207.0	401.0	-170.6	0.00	0.00	0.00
6,280.0	0.00	0.00	6,256.4	-207.0	401.0	-170.6	0.00	0.00	0.00
6,320.0	0.00	0.00	6,296.4	-207.0	401.0	-170.6	0.00	0.00	0.00
6,360.0	0.00	0.00	6,336.4	-207.0	401.0	-170.6	0.00	0.00	0.00
6,400.0	0.00	0.00	6,376.4	-207.0	401.0	-170.6	0.00	0.00	0.00
6,440.0	0.00	0.00	6,416.4	-207.0	401.0	-170.6	0.00	0.00	0.00
6,469.9	0.00	0.00	6,446.3	-207.0	401.0	-170.6	0.00	0.00	0.00
6,480.0	0.76	0.03	6,456.4	-206.9	401.0	-170.6	7.50	7.50	0.00
6,520.0	3.76	0.03	6,496.3	-205.4	401.0	-169.0	7.50	7.50	0.00
6,560.0	6.76	0.03	6,536.2	-201.7	401.0	-165.3	7.50	7.50	0.00
6,600.0	9.76	0.03	6,575.7	-195.9	401.0	-159.6	7.50	7.50	0.00
6,640.0	12.76	0.03	6,615.0	-188.1	401.0	-151.8	7.50	7.50	0.00
6,680.0	15.76	0.03	6,653.7	-178.3	401.0	-142.0	7.50	7.50	0.00
6,720.0	18.76	0.03	6,691.9	-166.4	401.0	-130.2	7.50	7.50	0.00
6,760.0	21.76	0.03	6,729.4	-152.6	401.0	-116.4	7.50	7.50	0.00
6,800.0	24.76	0.03	6,766.2	-136.8	401.0	-100.7	7.50	7.50	0.00
6,840.0	27.76	0.03	6,802.1	-119.1	401.0	-83.1	7.50	7.50	0.00
6,880.0	30.76	0.03	6,837.0	-99.5	401.1	-63.6	7.50	7.50	0.00
6,920.0	33.76	0.03	6,870.8	-78.2	401.1	-42.3	7.50	7.50	0.00
6,960.0	36.76	0.03	6,903.4	-55.1	401.1	-19.3	7.50	7.50	0.00
7,000.0	39.76	0.03	6,934.8	-30.3	401.1	5.3	7.50	7.50	0.00
7,040.0	42.76	0.03	6,964.9	-4.0	401.1	31.6	7.50	7.50	0.00
7,080.0	45.76	0.03	6,993.6	23.9	401.1	59.4	7.50	7.50	0.00
7,120.0	48.76	0.03	7,020.7	53.3	401.1	88.7	7.50	7.50	0.00
7,160.0	51.76	0.03	7,046.3	84.1	401.2	119.3	7.50	7.50	0.00
7,200.0	54.76	0.03	7,070.2	116.1	401.2	151.2	7.50	7.50	0.00
7,240.0	57.76	0.03	7,092.4	149.4	401.2	184.4	7.50	7.50	0.00
7,280.0	60.76	0.03	7,112.9	183.8	401.2	218.6	7.50	7.50	0.00
7,320.0	63.76	0.03	7,131.5	219.1	401.2	253.9	7.50	7.50	0.00
7,360.0	66.76	0.03	7,148.2	255.5	401.2	290.0	7.50	7.50	0.00
7,400.0	69.76	0.03	7,163.0	292.6	401.3	327.0	7.50	7.50	0.00
7,440.0	72.76	0.03	7,175.9	330.5	401.3	364.8	7.50	7.50	0.00
7,480.0	75.76	0.03	7,186.7	369.0	401.3	403.1	7.50	7.50	0.00
7,520.0	78.76	0.03	7,195.6	408.0	401.3	442.0	7.50	7.50	0.00
7,560.0	81.76	0.03	7,202.3	447.4	401.3	481.2	7.50	7.50	0.00
7,589.9	84.00	0.03	7,206.0	477.1	401.4	510.8	7.50	7.50	0.00
7,600.0	84.00	0.03	7,207.1	487.1	401.4	520.8	0.00	0.00	0.00
7,640.0	84.00	0.03	7,211.3	526.9	401.4	560.4	0.00	0.00	0.00
7,663.9	84.00	0.03	7,213.8	550.7	401.4	584.1	0.00	0.00	0.00
7,680.0	84.80	0.03	7,215.3	566.7	401.4	600.1	5.00	5.00	0.00
7,720.0	86.80	0.03	7,218.3	606.6	401.4	639.8	5.00	5.00	0.00
7,760.0	88.80	0.03	7,219.8	646.6	401.4	679.6	5.00	5.00	0.00
7,787.2	90.16	0.02	7,220.0	673.7	401.5	706.7	5.00	5.00	0.00
7,800.0	90.16	0.02	7,220.0	686.6	401.5	719.5	0.00	0.00	0.00
7,840.0	90.16	0.02	7,219.9	726.6	401.5	759.3	0.00	0.00	0.00
7,880.0	90.16	0.02	7,219.8	766.6	401.5	799.1	0.00	0.00	0.00
7,920.0	90.16	0.02	7,219.7	806.6	401.5	839.0	0.00	0.00	0.00
7,960.0	90.16	0.02	7,219.5	846.6	401.5	878.8	0.00	0.00	0.00
8,000.0	90.16	0.02	7,219.4	886.6	401.5	918.7	0.00	0.00	0.00
8,040.0	90.16	0.02	7,219.3	926.6	401.6	958.5	0.00	0.00	0.00
8,080.0	90.16	0.02	7,219.2	966.6	401.6	998.4	0.00	0.00	0.00
8,120.0	90.16	0.02	7,219.1	1,006.6	401.6	1,038.2	0.00	0.00	0.00
8,160.0	90.16	0.02	7,219.0	1,046.6	401.6	1,078.1	0.00	0.00	0.00

Database:	Landmark	Local Co-ordinate Reference:	Well Diana 6T-401
Company:	PETROLEUM DEVELOPMENT CORP Weld County CO	TVD Reference:	WELL @ 4810.0ft (RKB -15')
Project:	SEC.6-T6N-R65W	MD Reference:	WELL @ 4810.0ft (RKB -15')
Site:	Diana 6T-HZ Pad Sec.6-T6N-R65W	North Reference:	True
Well:	Diana 6T-401	Survey Calculation Method:	Minimum Curvature
Wellbore:	Wellbore #1		
Design:	Plan #1 (1-25-13)		

Planned Survey									
Measured Depth (ft)	Inclination (°)	Azimuth (°)	Vertical Depth (ft)	+N/-S (ft)	+E/-W (ft)	Vertical Section (ft)	Dogleg Rate (°/100ft)	Build Rate (°/100ft)	Turn Rate (°/100ft)
8,200.0	90.16	0.02	7,218.9	1,086.6	401.6	1,117.9	0.00	0.00	0.00
8,240.0	90.16	0.02	7,218.7	1,126.6	401.7	1,157.7	0.00	0.00	0.00
8,280.0	90.16	0.02	7,218.6	1,166.6	401.7	1,197.6	0.00	0.00	0.00
8,320.0	90.16	0.02	7,218.5	1,206.6	401.7	1,237.4	0.00	0.00	0.00
8,360.0	90.16	0.02	7,218.4	1,246.6	401.7	1,277.3	0.00	0.00	0.00
8,400.0	90.16	0.02	7,218.3	1,286.6	401.7	1,317.1	0.00	0.00	0.00
8,440.0	90.16	0.02	7,218.2	1,326.6	401.7	1,357.0	0.00	0.00	0.00
8,480.0	90.16	0.02	7,218.1	1,366.6	401.8	1,396.8	0.00	0.00	0.00
8,520.0	90.16	0.02	7,217.9	1,406.6	401.8	1,436.6	0.00	0.00	0.00
8,560.0	90.16	0.02	7,217.8	1,446.6	401.8	1,476.5	0.00	0.00	0.00
8,600.0	90.16	0.02	7,217.7	1,486.6	401.8	1,516.3	0.00	0.00	0.00
8,640.0	90.16	0.02	7,217.6	1,526.6	401.8	1,556.2	0.00	0.00	0.00
8,680.0	90.16	0.02	7,217.5	1,566.6	401.8	1,596.0	0.00	0.00	0.00
8,720.0	90.16	0.02	7,217.4	1,606.6	401.9	1,635.9	0.00	0.00	0.00
8,760.0	90.16	0.02	7,217.3	1,646.6	401.9	1,675.7	0.00	0.00	0.00
8,800.0	90.16	0.02	7,217.1	1,686.6	401.9	1,715.6	0.00	0.00	0.00
8,840.0	90.16	0.02	7,217.0	1,726.6	401.9	1,755.4	0.00	0.00	0.00
8,880.0	90.16	0.02	7,216.9	1,766.6	401.9	1,795.2	0.00	0.00	0.00
8,920.0	90.16	0.02	7,216.8	1,806.6	401.9	1,835.1	0.00	0.00	0.00
8,960.0	90.16	0.02	7,216.7	1,846.6	402.0	1,874.9	0.00	0.00	0.00
9,000.0	90.16	0.02	7,216.6	1,886.6	402.0	1,914.8	0.00	0.00	0.00
9,040.0	90.16	0.02	7,216.5	1,926.6	402.0	1,954.6	0.00	0.00	0.00
9,080.0	90.16	0.02	7,216.3	1,966.6	402.0	1,994.5	0.00	0.00	0.00
9,120.0	90.16	0.02	7,216.2	2,006.6	402.0	2,034.3	0.00	0.00	0.00
9,160.0	90.16	0.02	7,216.1	2,046.6	402.0	2,074.1	0.00	0.00	0.00
9,200.0	90.16	0.02	7,216.0	2,086.6	402.1	2,114.0	0.00	0.00	0.00
9,240.0	90.16	0.02	7,215.9	2,126.6	402.1	2,153.8	0.00	0.00	0.00
9,280.0	90.16	0.02	7,215.8	2,166.6	402.1	2,193.7	0.00	0.00	0.00
9,320.0	90.16	0.02	7,215.7	2,206.6	402.1	2,233.5	0.00	0.00	0.00
9,360.0	90.16	0.02	7,215.5	2,246.6	402.1	2,273.4	0.00	0.00	0.00
9,400.0	90.16	0.02	7,215.4	2,286.6	402.2	2,313.2	0.00	0.00	0.00
9,440.0	90.16	0.02	7,215.3	2,326.6	402.2	2,353.1	0.00	0.00	0.00
9,480.0	90.16	0.02	7,215.2	2,366.6	402.2	2,392.9	0.00	0.00	0.00
9,520.0	90.16	0.02	7,215.1	2,406.6	402.2	2,432.7	0.00	0.00	0.00
9,560.0	90.16	0.02	7,215.0	2,446.6	402.2	2,472.6	0.00	0.00	0.00
9,600.0	90.16	0.02	7,214.8	2,486.6	402.2	2,512.4	0.00	0.00	0.00
9,640.0	90.16	0.02	7,214.7	2,526.6	402.3	2,552.3	0.00	0.00	0.00
9,680.0	90.16	0.02	7,214.6	2,566.6	402.3	2,592.1	0.00	0.00	0.00
9,720.0	90.16	0.02	7,214.5	2,606.6	402.3	2,632.0	0.00	0.00	0.00
9,760.0	90.16	0.02	7,214.4	2,646.6	402.3	2,671.8	0.00	0.00	0.00
9,800.0	90.16	0.02	7,214.3	2,686.6	402.3	2,711.6	0.00	0.00	0.00
9,840.0	90.16	0.02	7,214.2	2,726.6	402.3	2,751.5	0.00	0.00	0.00
9,880.0	90.16	0.02	7,214.0	2,766.6	402.4	2,791.3	0.00	0.00	0.00
9,920.0	90.16	0.02	7,213.9	2,806.6	402.4	2,831.2	0.00	0.00	0.00
9,960.0	90.16	0.02	7,213.8	2,846.6	402.4	2,871.0	0.00	0.00	0.00
10,000.0	90.16	0.02	7,213.7	2,886.6	402.4	2,910.9	0.00	0.00	0.00
10,040.0	90.16	0.02	7,213.6	2,926.6	402.4	2,950.7	0.00	0.00	0.00
10,080.0	90.16	0.02	7,213.5	2,966.6	402.4	2,990.6	0.00	0.00	0.00
10,120.0	90.16	0.02	7,213.4	3,006.6	402.5	3,030.4	0.00	0.00	0.00
10,160.0	90.16	0.02	7,213.2	3,046.6	402.5	3,070.2	0.00	0.00	0.00
10,200.0	90.16	0.02	7,213.1	3,086.6	402.5	3,110.1	0.00	0.00	0.00
10,240.0	90.16	0.02	7,213.0	3,126.6	402.5	3,149.9	0.00	0.00	0.00
10,280.0	90.16	0.02	7,212.9	3,166.6	402.5	3,189.8	0.00	0.00	0.00

Database:	Landmark	Local Co-ordinate Reference:	Well Diana 6T-401
Company:	PETROLEUM DEVELOPMENT CORP Weld County CO	TVD Reference:	WELL @ 4810.0ft (RKB -15')
Project:	SEC.6-T6N-R65W	MD Reference:	WELL @ 4810.0ft (RKB -15')
Site:	Diana 6T-HZ Pad Sec.6-T6N-R65W	North Reference:	True
Well:	Diana 6T-401	Survey Calculation Method:	Minimum Curvature
Wellbore:	Wellbore #1		
Design:	Plan #1 (1-25-13)		

Planned Survey

Measured Depth (ft)	Inclination (°)	Azimuth (°)	Vertical Depth (ft)	+N/-S (ft)	+E/-W (ft)	Vertical Section (ft)	Dogleg Rate (°/100ft)	Build Rate (°/100ft)	Turn Rate (°/100ft)
10,320.0	90.16	0.02	7,212.8	3,206.6	402.6	3,229.6	0.00	0.00	0.00
10,360.0	90.16	0.02	7,212.7	3,246.6	402.6	3,269.5	0.00	0.00	0.00
10,400.0	90.16	0.02	7,212.6	3,286.6	402.6	3,309.3	0.00	0.00	0.00
10,440.0	90.16	0.02	7,212.4	3,326.6	402.6	3,349.1	0.00	0.00	0.00
10,480.0	90.16	0.02	7,212.3	3,366.6	402.6	3,389.0	0.00	0.00	0.00
10,520.0	90.16	0.02	7,212.2	3,406.6	402.6	3,428.8	0.00	0.00	0.00
10,560.0	90.16	0.02	7,212.1	3,446.6	402.7	3,468.7	0.00	0.00	0.00
10,600.0	90.16	0.02	7,212.0	3,486.6	402.7	3,508.5	0.00	0.00	0.00
10,640.0	90.16	0.02	7,211.9	3,526.6	402.7	3,548.4	0.00	0.00	0.00
10,680.0	90.16	0.02	7,211.8	3,566.6	402.7	3,588.2	0.00	0.00	0.00
10,720.0	90.16	0.02	7,211.6	3,606.6	402.7	3,628.1	0.00	0.00	0.00
10,760.0	90.16	0.02	7,211.5	3,646.6	402.7	3,667.9	0.00	0.00	0.00
10,800.0	90.16	0.02	7,211.4	3,686.6	402.8	3,707.7	0.00	0.00	0.00
10,840.0	90.16	0.02	7,211.3	3,726.6	402.8	3,747.6	0.00	0.00	0.00
10,880.0	90.16	0.02	7,211.2	3,766.6	402.8	3,787.4	0.00	0.00	0.00
10,920.0	90.16	0.02	7,211.1	3,806.6	402.8	3,827.3	0.00	0.00	0.00
10,960.0	90.16	0.02	7,211.0	3,846.6	402.8	3,867.1	0.00	0.00	0.00
11,000.0	90.16	0.02	7,210.8	3,886.6	402.8	3,907.0	0.00	0.00	0.00
11,040.0	90.16	0.02	7,210.7	3,926.6	402.9	3,946.8	0.00	0.00	0.00
11,080.0	90.16	0.02	7,210.6	3,966.6	402.9	3,986.6	0.00	0.00	0.00
11,120.0	90.16	0.02	7,210.5	4,006.6	402.9	4,026.5	0.00	0.00	0.00
11,160.0	90.16	0.02	7,210.4	4,046.6	402.9	4,066.3	0.00	0.00	0.00
11,200.0	90.16	0.02	7,210.3	4,086.5	402.9	4,106.2	0.00	0.00	0.00
11,240.0	90.16	0.02	7,210.2	4,126.5	402.9	4,146.0	0.00	0.00	0.00
11,280.0	90.16	0.02	7,210.0	4,166.5	403.0	4,185.9	0.00	0.00	0.00
11,320.0	90.16	0.02	7,209.9	4,206.5	403.0	4,225.7	0.00	0.00	0.00
11,360.0	90.16	0.02	7,209.8	4,246.5	403.0	4,265.6	0.00	0.00	0.00
11,400.0	90.16	0.02	7,209.7	4,286.5	403.0	4,305.4	0.00	0.00	0.00
11,440.0	90.16	0.02	7,209.6	4,326.5	403.0	4,345.2	0.00	0.00	0.00
11,480.0	90.16	0.02	7,209.5	4,366.5	403.1	4,385.1	0.00	0.00	0.00
11,520.0	90.16	0.02	7,209.3	4,406.5	403.1	4,424.9	0.00	0.00	0.00
11,560.0	90.16	0.02	7,209.2	4,446.5	403.1	4,464.8	0.00	0.00	0.00
11,600.0	90.16	0.02	7,209.1	4,486.5	403.1	4,504.6	0.00	0.00	0.00
11,640.0	90.16	0.02	7,209.0	4,526.5	403.1	4,544.5	0.00	0.00	0.00
11,642.0	90.16	0.02	7,209.0	4,528.5	403.1	4,546.4	0.00	0.00	0.00

Casing Points

Measured Depth (ft)	Vertical Depth (ft)	Name	Casing Diameter (")	Hole Diameter (")
7,589.9	7,206.0	7"	7	8-3/4

Plan Annotations

Measured Depth (ft)	Vertical Depth (ft)	Local Coordinates	Comment
1,000.0	1,000.0	0.0	KOP #1
6,469.9	6,446.3	-207.0	KOP #2
7,787.2	7,220.0	673.8	End of Build



PETROLEUM DEVELOPMENT CORP Weld County CO

SEC.6-T6N-R65W

Diana 6T-HZ Pad Sec.6-T6N-R65W

Diana 6T-401

Wellbore #1

Plan #1 (1-25-13)

Anticollision Report

25 January, 2013

Company:	PETROLEUM DEVELOPMENT CORP Weld County CO	Local Co-ordinate Reference:	Well Diana 6T-401
Project:	SEC.6-T6N-R65W	TVD Reference:	WELL @ 4810.0ft (RKB -15')
Reference Site:	Diana 6T-HZ Pad Sec.6-T6N-R65W	MD Reference:	WELL @ 4810.0ft (RKB -15')
Site Error:	0.0ft	North Reference:	True
Reference Well:	Diana 6T-401	Survey Calculation Method:	Minimum Curvature
Well Error:	0.0ft	Output errors are at	2.00 sigma
Reference Wellbore	Wellbore #1	Database:	Landmark
Reference Design:	Plan #1 (1-25-13)	Offset TVD Reference:	Offset Datum

Reference	Plan #1 (1-25-13)		
Filter type:	NO GLOBAL FILTER: Using user defined selection & filtering criteria		
Interpolation Method:	Stations	Error Model:	ISCWSA
Depth Range:	Unlimited	Scan Method:	Closest Approach 3D
Results Limited by:	Maximum center-center distance of 10,000.0ft	Error Surface:	Elliptical Conic
Warning Levels Evaluated at:	2.00 Sigma		

Survey Tool Program	Date	1/25/2013		
From (ft)	To (ft)	Survey (Wellbore)	Tool Name	Description
0.0	11,641.1	Plan #1 (1-25-13) (Wellbore #1)	MWD	MWD - Standard

Summary						
Site Name	Reference Measured Depth (ft)	Offset Measured Depth (ft)	Distance Between Centres (ft)	Distance Between Ellipses (ft)	Separation Factor	Warning
Offset Well - Wellbore - Design						
Diana 6T-HZ Pad Sec.6-T6N-R65W						
Diana 6Q-421 - Wellbore #1 - Plan #1 (1-25-13)	1,000.0	1,000.0	58.5	54.2	13.700	CC, ES
Diana 6Q-421 - Wellbore #1 - Plan #1 (1-25-13)	11,642.0	11,644.1	734.1	555.4	4.108	SF
Diana 6T-221 - Wellbore #1 - Plan #1 (1-25-13)	200.0	200.0	30.6	29.9	45.362	CC, ES
Diana 6T-221 - Wellbore #1 - Plan #1 (1-25-13)	11,642.0	11,490.4	381.2	220.9	2.378	SF
Diana 6T-241 - Wellbore #1 - Plan #1 (1-25-13)	1,000.0	1,000.0	27.8	23.5	6.511	CC, ES
Diana 6T-241 - Wellbore #1 - Plan #1 (1-25-13)	11,642.0	11,460.1	374.2	215.5	2.358	SF

Offset Design													Offset Site Error:		0.0 ft
Survey Program: 0-MWD													Offset Well Error:		0.0 ft
Reference		Offset		Semi Major Axis			Distance						Warning		
Measured Depth (ft)	Vertical Depth (ft)	Measured Depth (ft)	Vertical Depth (ft)	Reference (ft)	Offset (ft)	Highside Toolface (°)	Offset Wellbore Centre		Between Centres (ft)	Between Ellipses (ft)	Minimum Separation (ft)	Separation Factor			
							+N/-S (ft)	+E/-W (ft)							
0.0	0.0	0.0	0.0	0.0	0.0	-86.43	3.6	-58.4	58.5						
100.0	100.0	100.0	100.0	0.1	0.1	-86.43	3.6	-58.4	58.5	58.3	0.22	260.304			
200.0	200.0	200.0	200.0	0.3	0.3	-86.43	3.6	-58.4	58.5	57.8	0.67	86.768			
300.0	300.0	300.0	300.0	0.6	0.6	-86.43	3.6	-58.4	58.5	57.4	1.12	52.061			
400.0	400.0	400.0	400.0	0.8	0.8	-86.43	3.6	-58.4	58.5	56.9	1.57	37.186			
500.0	500.0	500.0	500.0	1.0	1.0	-86.43	3.6	-58.4	58.5	56.5	2.02	28.923			
600.0	600.0	600.0	600.0	1.2	1.2	-86.43	3.6	-58.4	58.5	56.0	2.47	23.664			
700.0	700.0	700.0	700.0	1.5	1.5	-86.43	3.6	-58.4	58.5	55.6	2.92	20.023			
800.0	800.0	800.0	800.0	1.7	1.7	-86.43	3.6	-58.4	58.5	55.1	3.37	17.354			
900.0	900.0	900.0	900.0	1.9	1.9	-86.43	3.6	-58.4	58.5	54.7	3.82	15.312			
1,000.0	1,000.0	1,000.0	1,000.0	2.1	2.1	-86.43	3.6	-58.4	58.5	54.2	4.27	13.700	CC, ES		
1,100.0	1,100.0	1,099.8	1,099.8	2.3	2.3	155.27	1.9	-58.6	60.2	55.5	4.67	12.896			
1,200.0	1,199.8	1,199.4	1,199.3	2.5	2.5	152.59	-3.2	-59.2	65.4	60.4	5.03	13.006			
1,307.2	1,306.6	1,306.1	1,305.7	2.8	2.7	149.82	-11.1	-60.2	74.9	69.4	5.44	13.763			
1,400.0	1,398.9	1,398.4	1,397.7	3.0	2.9	148.60	-17.9	-61.0	84.7	78.8	5.82	14.546			
1,500.0	1,498.3	1,497.8	1,496.8	3.2	3.1	147.56	-25.2	-61.9	95.2	89.0	6.25	15.244			
1,600.0	1,597.7	1,597.3	1,596.0	3.5	3.3	146.73	-32.5	-62.8	105.8	99.1	6.69	15.821			
1,700.0	1,697.2	1,696.7	1,695.2	3.7	3.6	146.06	-39.9	-63.7	116.4	109.3	7.14	16.301			
1,800.0	1,796.6	1,796.1	1,794.3	4.0	3.8	145.49	-47.2	-64.6	127.0	119.4	7.60	16.704			
1,900.0	1,896.0	1,895.5	1,893.5	4.3	4.0	145.01	-54.5	-65.5	137.6	129.6	8.08	17.043			
2,000.0	1,995.4	1,995.0	1,992.6	4.5	4.3	144.61	-61.8	-66.3	148.3	139.7	8.56	17.331			

CC - Min centre to center distance or convergent point, SF - min separation factor, ES - min ellipse separation

Company:	PETROLEUM DEVELOPMENT CORP Weld County CO	Local Co-ordinate Reference:	Well Diana 6T-401
Project:	SEC.6-T6N-R65W	TVD Reference:	WELL @ 4810.0ft (RKB -15')
Reference Site:	Diana 6T-HZ Pad Sec.6-T6N-R65W	MD Reference:	WELL @ 4810.0ft (RKB -15')
Site Error:	0.0ft	North Reference:	True
Reference Well:	Diana 6T-401	Survey Calculation Method:	Minimum Curvature
Well Error:	0.0ft	Output errors are at	2.00 sigma
Reference Wellbore	Wellbore #1	Database:	Landmark
Reference Design:	Plan #1 (1-25-13)	Offset TVD Reference:	Offset Datum

Offset Design		Diana 6T-HZ Pad Sec.6-T6N-R65W - Diana 6Q-421 - Wellbore #1 - Plan #1 (1-25-13)											Offset Site Error:		0.0 ft
Survey Program: 0-MWD													Offset Well Error:		0.0 ft
Reference		Offset		Semi Major Axis			Distance							Warning	
Measured Depth	Vertical Depth	Measured Depth	Vertical Depth	Reference	Offset	Highside Toolface	Offset Wellbore Centre		Between Centres	Between Ellipses	Minimum Separation	Separation Factor			
(ft)	(ft)	(ft)	(ft)	(ft)	(ft)	(°)	+N/-S (ft)	+E/-W (ft)	(ft)	(ft)	(ft)				
2,100.0	2,094.9	2,094.4	2,091.8	4.8	4.5	144.25	-69.2	-67.2	158.9	149.9	9.04	17.578			
2,200.0	2,194.3	2,193.8	2,190.9	5.1	4.7	143.94	-76.5	-68.1	169.6	160.0	9.53	17.790			
2,300.0	2,293.7	2,293.3	2,290.1	5.4	5.0	143.67	-83.8	-69.0	180.2	170.2	10.03	17.975			
2,400.0	2,393.1	2,392.7	2,389.2	5.7	5.2	143.43	-91.2	-69.9	190.9	180.3	10.52	18.136			
2,500.0	2,492.6	2,492.1	2,488.4	6.0	5.5	143.21	-98.5	-70.8	201.5	190.5	11.03	18.277			
2,600.0	2,592.0	2,591.5	2,587.5	6.2	5.7	143.02	-105.8	-71.7	212.2	200.6	11.53	18.402			
2,700.0	2,691.4	2,691.0	2,686.7	6.5	6.0	142.84	-113.2	-72.6	222.8	210.8	12.04	18.512			
2,800.0	2,790.8	2,790.4	2,785.8	6.8	6.3	142.68	-120.5	-73.5	233.5	220.9	12.55	18.611			
2,900.0	2,890.3	2,889.8	2,885.0	7.1	6.5	142.53	-127.8	-74.3	244.1	231.1	13.06	18.699			
3,000.0	2,989.7	2,989.3	2,984.2	7.4	6.8	142.40	-135.1	-75.2	254.8	241.2	13.57	18.779			
3,100.0	3,089.1	3,088.7	3,083.3	7.7	7.0	142.27	-142.5	-76.1	265.5	251.4	14.08	18.850			
3,200.0	3,188.5	3,188.1	3,182.5	8.0	7.3	142.16	-149.8	-77.0	276.1	261.5	14.60	18.915			
3,300.0	3,288.0	3,287.5	3,281.6	8.3	7.5	142.06	-157.1	-77.9	286.8	271.7	15.12	18.974			
3,400.0	3,387.4	3,387.0	3,380.8	8.6	7.8	141.96	-164.5	-78.8	297.5	281.9	15.63	19.028			
3,500.0	3,486.8	3,486.4	3,479.9	8.9	8.1	141.87	-171.8	-79.7	308.2	292.0	16.15	19.077			
3,600.0	3,586.2	3,585.8	3,579.1	9.2	8.3	141.78	-179.1	-80.6	318.8	302.2	16.67	19.122			
3,700.0	3,685.7	3,685.2	3,678.2	9.5	8.6	141.70	-186.4	-81.5	329.5	312.3	17.19	19.164			
3,800.0	3,785.1	3,784.7	3,777.4	9.8	8.8	141.63	-193.8	-82.4	340.2	322.5	17.72	19.202			
3,900.0	3,884.5	3,887.6	3,880.1	10.1	9.1	141.79	-199.9	-83.1	350.4	332.2	18.19	19.266			
4,000.0	3,983.9	3,990.9	3,983.3	10.4	9.3	142.51	-202.3	-83.4	359.6	340.9	18.64	19.291			
4,100.0	4,083.4	4,090.9	4,083.4	10.7	9.5	143.52	-202.4	-83.4	368.2	349.1	19.07	19.306			
4,200.0	4,182.8	4,190.3	4,182.8	11.0	9.6	144.49	-202.4	-83.4	376.8	357.3	19.48	19.341			
4,300.0	4,282.2	4,289.7	4,282.2	11.3	9.8	145.41	-202.4	-83.4	385.6	365.7	19.90	19.380			
4,400.0	4,381.6	4,389.2	4,381.6	11.6	10.0	146.29	-202.4	-83.4	394.5	374.2	20.31	19.422			
4,500.0	4,481.1	4,488.6	4,481.1	11.9	10.2	147.13	-202.4	-83.4	403.4	382.7	20.73	19.466			
4,600.0	4,580.5	4,588.0	4,580.5	12.2	10.3	147.94	-202.4	-83.4	412.5	391.3	21.14	19.511			
4,700.0	4,679.9	4,687.4	4,679.9	12.5	10.5	148.71	-202.4	-83.4	421.6	400.1	21.56	19.557			
4,800.0	4,779.4	4,786.9	4,779.4	12.8	10.7	149.45	-202.4	-83.4	430.8	408.8	21.98	19.604			
4,900.0	4,878.8	4,886.3	4,878.8	13.1	10.9	150.15	-202.4	-83.4	440.1	417.7	22.39	19.651			
5,000.0	4,978.2	4,985.7	4,978.2	13.4	11.1	150.83	-202.4	-83.4	449.4	426.6	22.81	19.699			
5,100.0	5,077.6	5,085.1	5,077.6	13.7	11.3	151.48	-202.4	-83.4	458.8	435.5	23.23	19.746			
5,200.0	5,177.1	5,184.6	5,177.1	14.0	11.4	152.11	-202.4	-83.4	468.2	444.6	23.65	19.794			
5,216.4	5,193.4	5,200.9	5,193.4	14.1	11.5	152.21	-202.4	-83.4	469.8	446.1	23.72	19.802			
5,300.0	5,276.6	5,284.1	5,276.6	14.3	11.6	152.70	-202.4	-83.4	476.6	452.6	24.07	19.801			
5,400.0	5,376.4	5,383.9	5,376.4	14.5	11.8	153.08	-202.4	-83.4	482.0	457.6	24.44	19.721			
5,500.0	5,476.4	5,483.9	5,476.4	14.6	12.0	153.24	-202.4	-83.4	484.3	459.5	24.80	19.533			
5,523.6	5,500.0	5,507.5	5,500.0	14.7	12.1	-89.45	-202.4	-83.4	484.4	459.5	24.88	19.470			
5,600.0	5,576.4	5,583.9	5,576.4	14.8	12.2	-89.45	-202.4	-83.4	484.4	459.2	25.17	19.245			
5,700.0	5,676.4	5,683.9	5,676.4	15.0	12.4	-89.45	-202.4	-83.4	484.4	458.9	25.55	18.960			
5,800.0	5,776.4	5,783.9	5,776.4	15.1	12.6	-89.45	-202.4	-83.4	484.4	458.5	25.93	18.682			
5,900.0	5,876.4	5,883.9	5,876.4	15.3	12.8	-89.45	-202.4	-83.4	484.4	458.1	26.31	18.411			
6,000.0	5,976.4	5,983.9	5,976.4	15.5	13.0	-89.45	-202.4	-83.4	484.4	457.7	26.70	18.146			
6,100.0	6,076.4	6,083.9	6,076.4	15.6	13.2	-89.45	-202.4	-83.4	484.4	457.3	27.08	17.887			
6,200.0	6,176.4	6,183.9	6,176.4	15.8	13.4	-89.45	-202.4	-83.4	484.4	456.9	27.47	17.634			
6,300.0	6,276.4	6,283.9	6,276.4	16.0	13.6	-89.45	-202.4	-83.4	484.4	456.6	27.86	17.387			
6,400.0	6,376.4	6,383.9	6,376.4	16.2	13.8	-89.45	-202.4	-83.4	484.4	456.2	28.25	17.146			
6,446.5	6,422.9	6,430.4	6,422.9	16.2	13.9	-89.45	-202.4	-83.4	484.4	456.0	28.44	17.035			
6,469.9	6,446.3	6,453.5	6,446.0	16.3	14.0	-89.45	-202.4	-83.4	484.4	455.9	28.53	16.981			
6,500.0	6,476.4	6,481.3	6,473.8	16.3	14.0	-89.48	-201.9	-83.5	484.5	455.9	28.63	16.920			
6,550.0	6,526.2	6,527.0	6,519.4	16.4	14.1	-89.48	-198.9	-83.9	484.9	456.2	28.80	16.841			
6,600.0	6,575.7	6,572.7	6,564.7	16.5	14.2	-89.48	-193.2	-84.7	485.8	456.9	28.94	16.789			

CC - Min centre to center distance or convergent point, SF - min separation factor, ES - min ellipse separation

Company:	PETROLEUM DEVELOPMENT CORP Weld County CO	Local Co-ordinate Reference:	Well Diana 6T-401
Project:	SEC.6-T6N-R65W	TVD Reference:	WELL @ 4810.0ft (RKB -15')
Reference Site:	Diana 6T-HZ Pad Sec.6-T6N-R65W	MD Reference:	WELL @ 4810.0ft (RKB -15')
Site Error:	0.0ft	North Reference:	True
Reference Well:	Diana 6T-401	Survey Calculation Method:	Minimum Curvature
Well Error:	0.0ft	Output errors are at	2.00 sigma
Reference Wellbore	Wellbore #1	Database:	Landmark
Reference Design:	Plan #1 (1-25-13)	Offset TVD Reference:	Offset Datum

Offset Design Diana 6T-HZ Pad Sec.6-T6N-R65W - Diana 6Q-421 - Wellbore #1 - Plan #1 (1-25-13)													Offset Site Error:	0.0 ft
Survey Program: 0-MWD													Offset Well Error:	0.0 ft
Measured Depth (ft)	Vertical Depth (ft)	Measured Depth (ft)	Vertical Depth (ft)	Reference	Offset	Semi Major Axis	Highside Toolface (°)	Offset Wellbore Centre +N/-S (ft)	Offset Wellbore Centre +E/-W (ft)	Between Centres (ft)	Between Ellipses (ft)	Minimum Separation (ft)	Separation Factor	Warning
6,650.0	6,624.7	6,618.5	6,609.7	16.5	14.2	-89.49	-89.49	-184.8	-85.8	487.1	458.0	29.06	16.763	
6,700.0	6,672.9	6,664.3	6,654.1	16.6	14.3	-89.50	-89.50	-173.7	-87.4	488.8	459.6	29.16	16.760	
6,750.0	6,720.1	6,710.1	6,697.8	16.6	14.3	-89.51	-89.51	-160.1	-89.3	490.8	461.6	29.26	16.777	
6,800.0	6,766.2	6,756.0	6,740.6	16.6	14.4	-89.52	-89.52	-143.8	-91.6	493.3	464.0	29.35	16.810	
6,850.0	6,810.9	6,801.9	6,782.5	16.7	14.4	-89.54	-89.54	-125.0	-94.2	496.2	466.7	29.44	16.855	
6,900.0	6,854.0	6,848.0	6,823.1	16.7	14.5	-89.55	-89.55	-103.7	-97.2	499.4	469.8	29.54	16.907	
6,950.0	6,895.4	6,894.1	6,862.5	16.7	14.5	-89.57	-89.57	-80.0	-100.5	503.0	473.3	29.66	16.960	
7,000.0	6,934.8	6,940.2	6,900.4	16.7	14.6	-89.58	-89.58	-53.9	-104.1	506.9	477.1	29.80	17.009	
7,050.0	6,972.2	6,986.5	6,936.8	16.7	14.7	-89.60	-89.60	-25.5	-108.1	511.2	481.2	29.99	17.048	
7,100.0	7,007.3	7,032.9	6,971.4	16.8	14.8	-89.61	-89.61	5.1	-112.3	515.8	485.6	30.22	17.070	
7,150.0	7,040.0	7,079.5	7,004.2	16.8	14.9	-89.62	-89.62	37.8	-116.9	520.7	490.2	30.50	17.072	
7,200.0	7,070.2	7,126.2	7,035.0	16.8	15.1	-89.63	-89.63	72.5	-121.7	525.9	495.1	30.85	17.049	
7,250.0	7,097.7	7,173.0	7,063.7	16.9	15.3	-89.63	-89.63	109.2	-126.8	531.4	500.1	31.26	16.996	
7,300.0	7,122.4	7,220.0	7,090.2	17.0	15.5	-89.64	-89.64	147.6	-132.2	537.1	505.3	31.76	16.913	
7,350.0	7,144.2	7,267.2	7,114.3	17.2	15.8	-89.64	-89.64	187.8	-137.8	543.0	510.7	32.33	16.796	
7,400.0	7,163.0	7,314.7	7,136.0	17.5	16.1	-89.64	-89.64	229.6	-143.6	549.2	516.2	32.99	16.648	
7,450.0	7,178.8	7,362.3	7,155.1	17.9	16.4	-89.63	-89.63	272.8	-149.7	555.6	521.8	33.73	16.471	
7,500.0	7,191.4	7,410.2	7,171.5	18.3	16.8	-89.62	-89.62	317.3	-155.9	562.1	527.5	34.56	16.266	
7,550.0	7,200.8	7,458.3	7,185.1	18.8	17.3	-89.61	-89.61	363.1	-162.3	568.7	533.3	35.46	16.037	
7,589.9	7,206.0	7,496.9	7,193.9	19.2	17.7	-89.60	-89.60	400.3	-167.5	574.1	537.9	36.24	15.842	
7,600.0	7,207.1	7,506.7	7,195.9	19.3	17.8	-89.69	-89.69	409.8	-168.8	575.5	539.0	36.45	15.790	
7,663.9	7,213.8	7,569.2	7,205.3	20.0	18.5	-89.99	-89.99	470.9	-177.3	584.2	546.4	37.82	15.450	
7,700.0	7,217.0	7,604.9	7,209.0	20.4	18.9	-89.80	-89.80	506.1	-182.2	589.2	550.6	38.64	15.251	
7,787.2	7,220.0	7,689.7	7,217.2	21.4	19.9	-89.71	-89.71	589.7	-193.9	601.3	560.6	40.73	14.764	
7,800.0	7,220.0	7,702.0	7,218.0	21.6	20.1	-89.79	-89.79	601.8	-195.6	603.1	562.0	41.04	14.693	
7,900.0	7,219.7	7,798.3	7,219.9	22.9	21.4	-89.99	-89.99	697.1	-209.4	617.4	573.8	43.64	14.147	
8,000.0	7,219.4	7,897.2	7,218.6	24.3	22.8	-89.90	-89.90	795.0	-223.8	632.0	585.5	46.45	13.607	
8,100.0	7,219.1	7,996.2	7,217.3	25.7	24.3	-89.81	-89.81	892.9	-238.1	646.5	597.1	49.39	13.089	
8,200.0	7,218.9	8,095.1	7,216.0	27.3	25.9	-89.73	-89.73	990.7	-252.4	661.0	608.6	52.46	12.601	
8,300.0	7,218.6	8,194.0	7,214.7	28.8	27.5	-89.65	-89.65	1,088.6	-266.8	675.6	620.0	55.63	12.145	
8,400.0	7,218.3	8,293.0	7,213.5	30.4	29.2	-89.57	-89.57	1,186.5	-281.1	690.1	631.2	58.88	11.721	
8,500.0	7,218.0	8,391.9	7,212.2	32.1	30.9	-89.50	-89.50	1,284.4	-295.4	704.7	642.5	62.20	11.328	
8,600.0	7,217.7	8,490.8	7,210.9	33.7	32.6	-89.43	-89.43	1,382.3	-309.8	719.2	653.6	65.59	10.965	
8,700.0	7,217.4	8,589.8	7,209.6	35.4	34.4	-89.36	-89.36	1,480.1	-324.1	733.7	664.7	69.03	10.630	
8,800.0	7,217.1	8,732.2	7,208.0	37.1	36.7	-89.28	-89.28	1,621.4	-342.0	746.8	673.7	73.10	10.216	
8,900.0	7,216.9	8,902.2	7,207.5	38.9	39.3	-89.28	-89.28	1,791.3	-348.1	750.1	672.7	77.42	9.689	
9,000.0	7,216.6	9,002.2	7,207.5	40.6	41.1	-89.31	-89.31	1,891.2	-347.5	749.5	668.6	80.94	9.260	
9,100.0	7,216.3	9,102.2	7,207.6	42.4	42.8	-89.33	-89.33	1,991.2	-346.8	748.9	664.4	84.48	8.865	
9,200.0	7,216.0	9,202.2	7,207.6	44.1	44.6	-89.36	-89.36	2,091.2	-346.2	748.3	660.3	88.06	8.499	
9,300.0	7,215.7	9,302.2	7,207.7	45.9	46.4	-89.39	-89.39	2,191.2	-345.6	747.8	656.1	91.65	8.159	
9,400.0	7,215.4	9,402.2	7,207.7	47.7	48.2	-89.41	-89.41	2,291.2	-345.0	747.2	651.9	95.26	7.843	
9,500.0	7,215.1	9,502.2	7,207.8	49.5	50.0	-89.44	-89.44	2,391.2	-344.3	746.6	647.7	98.89	7.549	
9,600.0	7,214.8	9,602.2	7,207.9	51.4	51.8	-89.46	-89.46	2,491.2	-343.7	746.0	643.5	102.54	7.275	
9,700.0	7,214.6	9,702.2	7,207.9	53.2	53.6	-89.49	-89.49	2,591.2	-343.1	745.4	639.2	106.20	7.019	
9,800.0	7,214.3	9,802.2	7,208.0	55.0	55.4	-89.52	-89.52	2,691.2	-342.5	744.8	635.0	109.87	6.779	
9,900.0	7,214.0	9,902.2	7,208.0	56.8	57.2	-89.54	-89.54	2,791.2	-341.8	744.2	630.7	113.56	6.554	
10,000.0	7,213.7	10,002.2	7,208.1	58.7	59.1	-89.57	-89.57	2,891.2	-341.2	743.7	626.4	117.25	6.342	
10,100.0	7,213.4	10,102.2	7,208.1	60.5	60.9	-89.59	-89.59	2,991.2	-340.6	743.1	622.1	120.96	6.143	
10,200.0	7,213.1	10,202.2	7,208.2	62.4	62.8	-89.62	-89.62	3,091.2	-340.0	742.5	617.8	124.67	5.956	
10,300.0	7,212.8	10,302.2	7,208.2	64.2	64.6	-89.65	-89.65	3,191.2	-339.3	741.9	613.5	128.39	5.779	
10,400.0	7,212.6	10,402.2	7,208.3	66.1	66.5	-89.67	-89.67	3,291.2	-338.7	741.3	609.2	132.12	5.611	

CC - Min centre to center distance or convergent point, SF - min separation factor, ES - min ellipse separation

Company:	PETROLEUM DEVELOPMENT CORP Weld County CO	Local Co-ordinate Reference:	Well Diana 6T-401
Project:	SEC.6-T6N-R65W	TVD Reference:	WELL @ 4810.0ft (RKB -15')
Reference Site:	Diana 6T-HZ Pad Sec.6-T6N-R65W	MD Reference:	WELL @ 4810.0ft (RKB -15')
Site Error:	0.0ft	North Reference:	True
Reference Well:	Diana 6T-401	Survey Calculation Method:	Minimum Curvature
Well Error:	0.0ft	Output errors are at	2.00 sigma
Reference Wellbore	Wellbore #1	Database:	Landmark
Reference Design:	Plan #1 (1-25-13)	Offset TVD Reference:	Offset Datum

Offset Design Diana 6T-HZ Pad Sec.6-T6N-R65W - Diana 6Q-421 - Wellbore #1 - Plan #1 (1-25-13)													Offset Site Error:	0.0 ft
Survey Program: 0-MWD													Offset Well Error:	0.0 ft
Measured Depth (ft)	Vertical Depth (ft)	Measured Depth (ft)	Vertical Depth (ft)	Reference	Offset	Highside Toolface (°)	Offset Wellbore Centre +N/-S (ft)	Offset Wellbore Centre +E/-W (ft)	Between Centres (ft)	Between Ellipses (ft)	Minimum Separation (ft)	Separation Factor	Warning	
10,500.0	7,212.3	10,502.2	7,208.4	68.0	68.3	-89.70	3,391.2	-338.1	740.7	604.9	135.85	5.453		
10,600.0	7,212.0	10,602.2	7,208.4	69.8	70.2	-89.72	3,491.2	-337.5	740.2	600.6	139.59	5.302		
10,700.0	7,211.7	10,702.2	7,208.5	71.7	72.0	-89.75	3,591.2	-336.8	739.6	596.2	143.34	5.160		
10,800.0	7,211.4	10,802.2	7,208.5	73.6	73.9	-89.78	3,691.2	-336.2	739.0	591.9	147.09	5.024		
10,900.0	7,211.1	10,902.2	7,208.6	75.4	75.8	-89.80	3,791.2	-335.6	738.4	587.6	150.85	4.895		
11,000.0	7,210.8	11,002.2	7,208.6	77.3	77.7	-89.83	3,891.2	-335.0	737.8	583.2	154.61	4.772		
11,100.0	7,210.6	11,102.2	7,208.7	79.2	79.5	-89.86	3,991.2	-334.3	737.2	578.9	158.37	4.655		
11,200.0	7,210.3	11,202.2	7,208.7	81.1	81.4	-89.88	4,091.2	-333.7	736.7	574.5	162.14	4.543		
11,300.0	7,210.0	11,302.1	7,208.8	83.0	83.3	-89.91	4,191.2	-333.1	736.1	570.2	165.91	4.437		
11,400.0	7,209.7	11,402.1	7,208.9	84.9	85.2	-89.94	4,291.1	-332.5	735.5	565.8	169.69	4.334		
11,500.0	7,209.4	11,502.1	7,208.9	86.7	87.1	-89.96	4,391.1	-331.8	734.9	561.5	173.46	4.237		
11,600.0	7,209.1	11,602.1	7,209.0	88.6	88.9	-89.99	4,491.1	-331.2	734.3	557.1	177.24	4.143		
11,642.0	7,209.0	11,644.1	7,209.0	89.3	89.7	-90.00	4,533.1	-331.0	734.1	555.4	178.68	4.108 SF		

Company:	PETROLEUM DEVELOPMENT CORP Weld County CO	Local Co-ordinate Reference:	Well Diana 6T-401
Project:	SEC.6-T6N-R65W	TVD Reference:	WELL @ 4810.0ft (RKB -15')
Reference Site:	Diana 6T-HZ Pad Sec.6-T6N-R65W	MD Reference:	WELL @ 4810.0ft (RKB -15')
Site Error:	0.0ft	North Reference:	True
Reference Well:	Diana 6T-401	Survey Calculation Method:	Minimum Curvature
Well Error:	0.0ft	Output errors are at	2.00 sigma
Reference Wellbore	Wellbore #1	Database:	Landmark
Reference Design:	Plan #1 (1-25-13)	Offset TVD Reference:	Offset Datum

Offset Design Diana 6T-HZ Pad Sec.6-T6N-R65W - Diana 6T-221 - Wellbore #1 - Plan #1 (1-25-13)													Offset Site Error:	0.0 ft
Survey Program: 0-MWD													Offset Well Error:	0.0 ft
Measured Depth (ft)	Vertical Depth (ft)	Measured Depth (ft)	Vertical Depth (ft)	Reference	Offset	Semi Major Axis (ft)	Highside Toolface (°)	Offset Wellbore Centre +N/-S (ft)	Offset Wellbore Centre +E/-W (ft)	Between Centres (ft)	Between Ellipses (ft)	Minimum Separation (ft)	Separation Factor	Warning
0.0	0.0	0.0	0.0	0.0	0.0	90.00	90.00	0.0	30.6	30.6				
100.0	100.0	100.0	100.0	0.1	0.1	90.00	90.00	0.0	30.6	30.6	30.4	0.22	136.085	
200.0	200.0	200.0	200.0	0.3	0.3	90.00	90.00	0.0	30.6	30.6	29.9	0.67	45.362 CC, ES	
300.0	300.0	298.9	298.9	0.6	0.5	90.86	90.86	-0.5	32.2	32.2	31.1	1.11	29.087	
400.0	400.0	397.7	397.5	0.8	0.8	92.98	92.98	-1.9	37.1	37.3	35.7	1.55	24.048	
500.0	500.0	495.9	495.4	1.0	1.0	95.46	95.46	-4.3	45.2	45.7	43.7	2.01	22.713	
600.0	600.0	593.5	592.2	1.2	1.3	97.71	97.71	-7.6	56.5	57.5	55.0	2.50	23.021	
700.0	700.0	691.7	689.4	1.5	1.6	99.47	99.47	-11.7	70.3	72.0	69.0	3.01	23.884	
800.0	800.0	790.6	787.2	1.7	1.9	100.66	100.66	-15.9	84.3	86.8	83.2	3.54	24.474	
900.0	900.0	889.5	885.0	1.9	2.3	101.50	101.50	-20.0	98.4	101.5	97.4	4.08	24.863	
1,000.0	1,000.0	988.4	982.8	2.1	2.6	102.13	102.13	-24.2	112.5	116.3	111.7	4.63	25.135	
1,100.0	1,100.0	1,087.5	1,080.8	2.3	3.0	-14.81	-14.81	-28.3	126.6	129.4	124.7	4.73	27.358	
1,200.0	1,199.8	1,187.0	1,179.2	2.5	3.3	-14.89	-14.89	-32.5	140.7	139.2	134.1	5.16	26.993	
1,307.2	1,306.6	1,294.0	1,285.0	2.8	3.7	-15.37	-15.37	-37.0	155.9	146.0	140.3	5.62	25.956	
1,400.0	1,398.9	1,386.7	1,376.7	3.0	4.1	-15.95	-15.95	-40.9	169.1	150.2	144.1	6.04	24.843	
1,500.0	1,498.3	1,486.6	1,475.5	3.2	4.4	-16.55	-16.55	-45.1	183.3	154.7	148.2	6.50	23.781	
1,600.0	1,597.7	1,586.5	1,574.3	3.5	4.8	-17.11	-17.11	-49.3	197.6	159.2	152.3	6.97	22.841	
1,700.0	1,697.2	1,686.3	1,673.0	3.7	5.1	-17.65	-17.65	-53.5	211.8	163.8	156.3	7.44	22.004	
1,800.0	1,796.6	1,786.2	1,771.8	4.0	5.5	-18.15	-18.15	-57.7	226.0	168.4	160.4	7.92	21.256	
1,900.0	1,896.0	1,886.1	1,870.6	4.3	5.9	-18.63	-18.63	-61.9	240.2	172.9	164.5	8.40	20.584	
2,000.0	1,995.4	1,986.0	1,969.4	4.5	6.2	-19.08	-19.08	-66.1	254.4	177.5	168.6	8.89	19.977	
2,100.0	2,094.9	2,085.9	2,068.2	4.8	6.6	-19.51	-19.51	-70.3	268.6	182.1	172.8	9.38	19.427	
2,200.0	2,194.3	2,185.8	2,166.9	5.1	6.9	-19.91	-19.91	-74.5	282.8	186.8	176.9	9.87	18.927	
2,300.0	2,293.7	2,285.6	2,265.7	5.4	7.3	-20.30	-20.30	-78.7	297.0	191.4	181.0	10.36	18.470	
2,400.0	2,393.1	2,385.5	2,364.5	5.7	7.7	-20.67	-20.67	-82.9	311.2	196.0	185.2	10.86	18.051	
2,500.0	2,492.6	2,485.4	2,463.3	6.0	8.0	-21.03	-21.03	-87.1	325.5	200.7	189.3	11.36	17.666	
2,600.0	2,592.0	2,585.3	2,562.1	6.2	8.4	-21.36	-21.36	-91.3	339.7	205.3	193.4	11.86	17.311	
2,700.0	2,691.4	2,685.2	2,660.8	6.5	8.7	-21.68	-21.68	-95.5	353.9	210.0	197.6	12.36	16.983	
2,800.0	2,790.8	2,785.1	2,759.6	6.8	9.1	-21.99	-21.99	-99.7	368.1	214.6	201.8	12.87	16.678	
2,900.0	2,890.3	2,885.0	2,858.4	7.1	9.5	-22.29	-22.29	-103.9	382.3	219.3	205.9	13.38	16.395	
3,000.0	2,889.7	2,884.8	2,857.2	7.4	9.8	-22.57	-22.57	-108.1	396.5	224.0	210.1	13.88	16.131	
3,100.0	3,089.1	3,084.7	3,055.9	7.7	10.2	-22.84	-22.84	-112.2	410.7	228.6	214.2	14.39	15.885	
3,200.0	3,188.5	3,184.6	3,154.7	8.0	10.6	-23.10	-23.10	-116.4	424.9	233.3	218.4	14.90	15.654	
3,300.0	3,288.0	3,284.5	3,253.5	8.3	10.9	-23.35	-23.35	-120.6	439.1	238.0	222.6	15.42	15.438	
3,400.0	3,387.4	3,384.4	3,352.3	8.6	11.3	-23.59	-23.59	-124.8	453.3	242.7	226.8	15.93	15.235	
3,500.0	3,486.8	3,484.3	3,451.1	8.9	11.6	-23.82	-23.82	-129.0	467.6	247.4	231.0	16.45	15.044	
3,600.0	3,586.2	3,584.1	3,549.8	9.2	12.0	-24.04	-24.04	-133.2	481.8	252.1	235.1	16.96	14.863	
3,700.0	3,685.7	3,684.0	3,648.6	9.5	12.4	-24.26	-24.26	-137.4	496.0	256.8	239.3	17.48	14.693	
3,800.0	3,785.1	3,783.9	3,747.4	9.8	12.7	-24.46	-24.46	-141.6	510.2	261.5	243.5	18.00	14.532	
3,900.0	3,884.5	3,883.8	3,846.2	10.1	13.1	-24.66	-24.66	-145.8	524.4	266.2	247.7	18.51	14.380	
4,000.0	3,983.9	3,983.7	3,945.0	10.4	13.5	-24.86	-24.86	-150.0	538.6	270.9	251.9	19.03	14.235	
4,100.0	4,083.4	4,083.6	4,043.7	10.7	13.8	-25.04	-25.04	-154.2	552.8	275.6	256.1	19.55	14.098	
4,200.0	4,182.8	4,183.5	4,142.5	11.0	14.2	-25.22	-25.22	-158.4	567.0	280.4	260.3	20.07	13.967	
4,300.0	4,282.2	4,283.3	4,241.3	11.3	14.5	-25.40	-25.40	-162.6	581.2	285.1	264.5	20.59	13.843	
4,400.0	4,381.6	4,383.2	4,340.1	11.6	14.9	-25.56	-25.56	-166.8	595.5	289.8	268.7	21.12	13.724	
4,500.0	4,481.1	4,483.1	4,438.9	11.9	15.3	-25.73	-25.73	-171.0	609.7	294.5	272.9	21.64	13.611	
4,600.0	4,580.5	4,583.0	4,537.6	12.2	15.6	-25.88	-25.88	-175.2	623.9	299.3	277.1	22.16	13.503	
4,700.0	4,679.9	4,682.9	4,636.4	12.5	16.0	-26.04	-26.04	-179.4	638.1	304.0	281.3	22.69	13.400	
4,800.0	4,779.4	4,782.8	4,735.2	12.8	16.4	-26.18	-26.18	-183.6	652.3	308.7	285.5	23.21	13.301	
4,900.0	4,878.8	4,882.6	4,834.0	13.1	16.7	-26.33	-26.33	-187.8	666.5	313.5	289.7	23.74	13.207	
5,000.0	4,978.2	4,982.5	4,932.8	13.4	17.1	-26.47	-26.47	-192.0	680.7	318.2	293.9	24.26	13.116	

CC - Min centre to center distance or convergent point, SF - min separation factor, ES - min ellipse separation

Company:	PETROLEUM DEVELOPMENT CORP Weld County CO	Local Co-ordinate Reference:	Well Diana 6T-401
Project:	SEC.6-T6N-R65W	TVD Reference:	WELL @ 4810.0ft (RKB -15')
Reference Site:	Diana 6T-HZ Pad Sec.6-T6N-R65W	MD Reference:	WELL @ 4810.0ft (RKB -15')
Site Error:	0.0ft	North Reference:	True
Reference Well:	Diana 6T-401	Survey Calculation Method:	Minimum Curvature
Well Error:	0.0ft	Output errors are at	2.00 sigma
Reference Wellbore	Wellbore #1	Database:	Landmark
Reference Design:	Plan #1 (1-25-13)	Offset TVD Reference:	Offset Datum

Offset Design Diana 6T-HZ Pad Sec.6-T6N-R65W - Diana 6T-221 - Wellbore #1 - Plan #1 (1-25-13)													Offset Site Error:	0.0 ft
Survey Program: 0-MWD													Offset Well Error:	0.0 ft
Measured Depth (ft)	Vertical Depth (ft)	Measured Depth (ft)	Vertical Depth (ft)	Reference	Offset	Semi Major Axis	Highside Toolface (°)	Offset Wellbore Centre +N/-S (ft)	Offset Wellbore Centre +E/-W (ft)	Between Centres (ft)	Between Ellipses (ft)	Minimum Separation (ft)	Separation Factor	Warning
5,100.0	5,077.6	5,082.4	5,031.5	13.7	17.5	-26.60		-196.2	694.9	322.9	298.2	24.79	13.029	
5,200.0	5,177.1	5,189.2	5,137.2	14.0	17.8	-26.77		-200.5	709.5	327.1	301.8	25.31	12.922	
5,216.4	5,193.4	5,207.7	5,155.6	14.1	17.9	-26.82		-201.1	711.7	327.5	302.1	25.40	12.894	
5,300.0	5,276.6	5,301.5	5,248.9	14.3	18.1	-27.05		-203.9	721.0	328.9	303.2	25.76	12.769	
5,400.0	5,376.4	5,413.9	5,361.1	14.5	18.3	-27.23		-206.0	728.4	330.1	304.0	26.12	12.637	
5,500.0	5,476.4	5,526.4	5,473.4	14.6	18.4	-27.30		-207.0	731.5	330.6	304.1	26.43	12.508	
5,523.6	5,500.0	5,552.9	5,500.0	14.7	18.5	90.00		-207.0	731.6	330.6	304.1	26.50	12.473	
5,600.0	5,576.4	5,629.3	5,576.4	14.8	18.6	90.00		-207.0	731.6	330.6	303.8	26.78	12.346	
5,700.0	5,676.4	5,729.3	5,676.4	15.0	18.7	90.00		-207.0	731.6	330.6	303.5	27.13	12.186	
5,800.0	5,776.4	5,829.3	5,776.4	15.1	18.8	90.00		-207.0	731.6	330.6	303.1	27.48	12.029	
5,900.0	5,876.4	5,929.3	5,876.4	15.3	19.0	90.00		-207.0	731.6	330.6	302.7	27.84	11.875	
6,000.0	5,976.4	6,029.3	5,976.4	15.5	19.1	90.00		-207.0	731.6	330.6	302.4	28.20	11.723	
6,100.0	6,076.4	6,129.3	6,076.4	15.6	19.2	90.00		-207.0	731.6	330.6	302.0	28.56	11.575	
6,200.0	6,176.4	6,229.3	6,176.4	15.8	19.4	90.00		-207.0	731.6	330.6	301.7	28.93	11.429	
6,266.6	6,242.9	6,295.9	6,242.9	15.9	19.5	90.00		-207.0	731.6	330.6	301.4	29.17	11.333	
6,300.0	6,276.4	6,329.3	6,276.4	16.0	19.5	90.00		-207.0	731.6	330.6	301.3	29.29	11.286	
6,325.6	6,301.9	6,354.9	6,301.9	16.0	19.6	89.92		-206.6	731.6	330.6	301.2	29.39	11.248	
6,400.0	6,376.4	6,428.7	6,375.5	16.2	19.6	88.87		-200.5	731.6	330.7	300.9	29.74	11.119	
6,469.9	6,446.3	6,496.4	6,442.2	16.3	19.7	86.84		-188.7	731.6	331.1	301.0	30.14	10.985	
6,500.0	6,476.4	6,525.0	6,469.9	16.3	19.7	85.71		-182.0	731.6	331.6	301.2	30.33	10.932	
6,550.0	6,526.2	6,572.0	6,514.9	16.4	19.8	83.91		-168.7	731.6	332.6	301.9	30.63	10.857	
6,600.0	6,575.7	6,618.3	6,558.5	16.5	19.8	82.16		-152.9	731.6	333.8	302.9	30.90	10.804	
6,650.0	6,624.7	6,664.2	6,600.6	16.5	19.8	80.45		-134.7	731.6	335.4	304.3	31.14	10.773	
6,700.0	6,672.9	6,709.5	6,641.0	16.6	19.8	78.81		-114.2	731.6	337.2	305.9	31.33	10.764	
6,750.0	6,720.1	6,754.4	6,679.8	16.6	19.8	77.23		-91.6	731.6	339.3	307.8	31.49	10.775	
6,800.0	6,766.2	6,800.0	6,717.8	16.6	19.8	75.68		-66.4	731.7	341.5	309.9	31.61	10.805	
6,850.0	6,810.9	6,842.8	6,752.0	16.7	19.9	74.28		-40.6	731.7	343.8	312.1	31.68	10.853	
6,900.0	6,854.0	6,886.5	6,785.4	16.7	19.9	72.92		-12.5	731.7	346.3	314.5	31.73	10.914	
6,950.0	6,895.4	6,929.7	6,816.8	16.7	19.9	71.64		17.3	731.7	348.7	317.0	31.75	10.984	
7,000.0	6,934.8	6,972.7	6,846.3	16.7	19.9	70.45		48.5	731.7	351.2	319.5	31.76	11.060	
7,050.0	6,972.2	7,015.3	6,873.7	16.7	19.9	69.34		81.1	731.7	353.7	322.0	31.75	11.141	
7,100.0	7,007.3	7,057.7	6,899.2	16.8	20.0	68.32		115.0	731.7	356.2	324.4	31.80	11.200	
7,150.0	7,040.0	7,100.0	6,922.7	16.8	20.0	67.38		150.1	731.8	358.5	326.7	31.85	11.256	
7,200.0	7,070.2	7,141.8	6,944.0	16.8	20.1	66.53		186.1	731.8	360.7	328.8	31.96	11.288	
7,250.0	7,097.7	7,183.5	6,963.2	16.9	20.1	65.76		223.1	731.8	362.8	330.7	32.12	11.295	
7,300.0	7,122.4	7,225.0	6,980.3	17.0	20.2	65.09		260.9	731.8	364.7	332.4	32.37	11.268	
7,350.0	7,144.2	7,266.4	6,995.3	17.2	20.4	64.50		299.4	731.8	366.5	333.7	32.71	11.204	
7,400.0	7,163.0	7,307.6	7,008.2	17.5	20.5	64.00		338.6	731.9	368.0	334.8	33.15	11.101	
7,450.0	7,178.8	7,350.0	7,019.2	17.9	20.7	63.57		379.5	731.9	369.2	335.5	33.71	10.953	
7,500.0	7,191.4	7,389.8	7,027.4	18.3	20.9	63.25		418.5	731.9	370.3	335.9	34.38	10.770	
7,550.0	7,200.8	7,430.8	7,033.7	18.8	21.2	63.00		459.0	731.9	371.0	335.9	35.17	10.549	
7,589.9	7,206.0	7,463.5	7,037.2	19.2	21.5	62.87		491.5	731.9	371.5	335.6	35.89	10.350	
7,600.0	7,207.1	7,471.7	7,037.9	19.3	21.5	62.84		499.7	731.9	371.6	335.5	36.06	10.305	
7,663.9	7,213.8	7,523.8	7,040.0	20.0	22.0	62.39		551.7	732.0	373.5	336.4	37.10	10.066	
7,700.0	7,217.0	7,557.7	7,039.9	20.4	22.3	61.90		585.6	732.0	375.0	337.2	37.80	9.922	
7,787.2	7,220.0	7,644.8	7,039.5	21.4	23.2	61.35		672.7	732.0	376.7	336.9	39.81	9.463	
7,800.0	7,220.0	7,657.6	7,039.4	21.6	23.3	61.35		685.5	732.0	376.7	336.6	40.10	9.395	
7,900.0	7,219.7	7,757.6	7,038.9	22.9	24.5	61.32		785.5	732.1	376.8	334.4	42.45	8.876	
8,000.0	7,219.4	7,857.6	7,038.4	24.3	25.8	61.29		885.5	732.1	376.9	332.0	44.94	8.386	
8,100.0	7,219.1	7,957.6	7,037.9	25.7	27.1	61.26		985.5	732.2	377.0	329.5	47.56	7.928	
8,200.0	7,218.9	8,057.6	7,037.4	27.3	28.6	61.24		1,085.5	732.2	377.1	326.9	50.27	7.503	

CC - Min centre to center distance or convergent point, SF - min separation factor, ES - min ellipse separation

Company:	PETROLEUM DEVELOPMENT CORP Weld County CO	Local Co-ordinate Reference:	Well Diana 6T-401
Project:	SEC.6-T6N-R65W	TVD Reference:	WELL @ 4810.0ft (RKB -15')
Reference Site:	Diana 6T-HZ Pad Sec.6-T6N-R65W	MD Reference:	WELL @ 4810.0ft (RKB -15')
Site Error:	0.0ft	North Reference:	True
Reference Well:	Diana 6T-401	Survey Calculation Method:	Minimum Curvature
Well Error:	0.0ft	Output errors are at	2.00 sigma
Reference Wellbore	Wellbore #1	Database:	Landmark
Reference Design:	Plan #1 (1-25-13)	Offset TVD Reference:	Offset Datum

Offset Design		Diana 6T-HZ Pad Sec.6-T6N-R65W - Diana 6T-221 - Wellbore #1 - Plan #1 (1-25-13)											Offset Site Error: 0.0 ft	
Survey Program: 0-MWD													Offset Well Error: 0.0 ft	
Reference		Offset		Semi Major Axis			Distance							Warning
Measured Depth	Vertical Depth	Measured Depth	Vertical Depth	Reference	Offset	Highside Toolface	Offset Wellbore Centre		Between Centres	Between Ellipses	Minimum Separation	Separation Factor		
(ft)	(ft)	(ft)	(ft)	(ft)	(ft)	(°)	+N/-S (ft)	+E/-W (ft)	(ft)	(ft)	(ft)			
8,300.0	7,218.6	8,157.6	7,036.9	28.8	30.0	61.21	1,185.5	732.3	377.3	324.2	53.06	7.110		
8,400.0	7,218.3	8,257.6	7,036.4	30.4	31.6	61.18	1,285.5	732.3	377.4	321.4	55.93	6.748		
8,500.0	7,218.0	8,357.6	7,035.9	32.1	33.2	61.15	1,385.5	732.4	377.5	318.6	58.85	6.414		
8,600.0	7,217.7	8,457.6	7,035.3	33.7	34.8	61.12	1,485.5	732.4	377.6	315.8	61.83	6.107		
8,700.0	7,217.4	8,557.6	7,034.8	35.4	36.4	61.09	1,585.5	732.5	377.7	312.9	64.85	5.825		
8,800.0	7,217.1	8,657.6	7,034.3	37.1	38.1	61.06	1,685.5	732.5	377.8	309.9	67.90	5.564		
8,900.0	7,216.9	8,757.6	7,033.8	38.9	39.8	61.03	1,785.5	732.6	377.9	306.9	70.99	5.323		
9,000.0	7,216.6	8,857.6	7,033.3	40.6	41.5	61.01	1,885.5	732.6	378.0	303.9	74.11	5.101		
9,100.0	7,216.3	8,957.6	7,032.8	42.4	43.2	60.98	1,985.5	732.7	378.2	300.9	77.26	4.895		
9,200.0	7,216.0	9,057.6	7,032.3	44.1	45.0	60.95	2,085.5	732.7	378.3	297.8	80.42	4.704		
9,300.0	7,215.7	9,157.6	7,031.8	45.9	46.7	60.92	2,185.5	732.8	378.4	294.8	83.61	4.526		
9,400.0	7,215.4	9,257.6	7,031.3	47.7	48.5	60.89	2,285.5	732.8	378.5	291.7	86.81	4.360		
9,500.0	7,215.1	9,357.6	7,030.8	49.5	50.3	60.86	2,385.5	732.9	378.6	288.6	90.02	4.206		
9,600.0	7,214.8	9,457.6	7,030.3	51.4	52.1	60.83	2,485.5	732.9	378.7	285.5	93.25	4.061		
9,700.0	7,214.6	9,557.6	7,029.8	53.2	53.9	60.81	2,585.5	733.0	378.8	282.3	96.49	3.926		
9,800.0	7,214.3	9,657.6	7,029.3	55.0	55.7	60.78	2,685.5	733.0	378.9	279.2	99.74	3.799		
9,900.0	7,214.0	9,757.6	7,028.8	56.8	57.5	60.75	2,785.5	733.1	379.1	276.1	103.00	3.680		
10,000.0	7,213.7	9,857.6	7,028.3	58.7	59.3	60.72	2,885.4	733.1	379.2	272.9	106.27	3.568		
10,100.0	7,213.4	9,957.6	7,027.8	60.5	61.1	60.69	2,985.4	733.2	379.3	269.7	109.54	3.462		
10,200.0	7,213.1	10,057.6	7,027.2	62.4	63.0	60.66	3,085.4	733.2	379.4	266.6	112.82	3.363		
10,300.0	7,212.8	10,157.6	7,026.7	64.2	64.8	60.64	3,185.4	733.3	379.5	263.4	116.11	3.269		
10,400.0	7,212.6	10,257.6	7,026.2	66.1	66.7	60.61	3,285.4	733.3	379.6	260.2	119.40	3.179		
10,500.0	7,212.3	10,357.6	7,025.7	68.0	68.5	60.58	3,385.4	733.4	379.7	257.0	122.70	3.095		
10,600.0	7,212.0	10,457.6	7,025.2	69.8	70.4	60.55	3,485.4	733.4	379.9	253.9	126.00	3.015		
10,700.0	7,211.7	10,557.6	7,024.7	71.7	72.2	60.52	3,585.4	733.5	380.0	250.7	129.31	2.938		
10,800.0	7,211.4	10,657.6	7,024.2	73.6	74.1	60.49	3,685.4	733.5	380.1	247.5	132.62	2.866		
10,900.0	7,211.1	10,757.6	7,023.7	75.4	75.9	60.47	3,785.4	733.6	380.2	244.3	135.93	2.797		
11,000.0	7,210.8	10,857.6	7,023.2	77.3	77.8	60.44	3,885.4	733.6	380.3	241.1	139.24	2.731		
11,100.0	7,210.6	10,957.6	7,022.7	79.2	79.7	60.41	3,985.4	733.7	380.4	237.9	142.56	2.669		
11,200.0	7,210.3	11,057.6	7,022.2	81.1	81.5	60.38	4,085.4	733.7	380.5	234.7	145.88	2.609		
11,300.0	7,210.0	11,157.6	7,021.7	83.0	83.4	60.35	4,185.4	733.8	380.7	231.5	149.20	2.551		
11,400.0	7,209.7	11,257.6	7,021.2	84.9	85.3	60.32	4,285.4	733.8	380.8	228.3	152.52	2.497		
11,500.0	7,209.4	11,357.6	7,020.7	86.7	87.2	60.30	4,385.4	733.9	380.9	225.0	155.84	2.444		
11,600.0	7,209.1	11,457.6	7,020.2	88.6	89.0	60.27	4,485.4	733.9	381.0	221.8	159.17	2.394		
11,616.9	7,209.1	11,474.5	7,020.1	88.9	89.4	60.26	4,502.4	734.0	381.0	221.4	159.67	2.386		
11,642.0	7,209.0	11,490.4	7,020.0	89.3	89.7	60.26	4,518.3	734.0	381.2	220.9	160.26	2.378 SF		

Company:	PETROLEUM DEVELOPMENT CORP Weld County CO	Local Co-ordinate Reference:	Well Diana 6T-401
Project:	SEC.6-T6N-R65W	TVD Reference:	WELL @ 4810.0ft (RKB -15')
Reference Site:	Diana 6T-HZ Pad Sec.6-T6N-R65W	MD Reference:	WELL @ 4810.0ft (RKB -15')
Site Error:	0.0ft	North Reference:	True
Reference Well:	Diana 6T-401	Survey Calculation Method:	Minimum Curvature
Well Error:	0.0ft	Output errors are at	2.00 sigma
Reference Wellbore	Wellbore #1	Database:	Landmark
Reference Design:	Plan #1 (1-25-13)	Offset TVD Reference:	Offset Datum

Offset Design Diana 6T-HZ Pad Sec.6-T6N-R65W - Diana 6T-241 - Wellbore #1 - Plan #1 (1-25-13)													Offset Site Error:	0.0 ft
Survey Program: 0-MWD													Offset Well Error:	0.0 ft
Measured Depth (ft)	Vertical Depth (ft)	Measured Depth (ft)	Vertical Depth (ft)	Reference	Offset	Semi Major Axis	Highside Toolface (°)	Offset Wellbore Centre +N/-S (ft)	+E/-W (ft)	Between Centres (ft)	Between Ellipses (ft)	Minimum Separation (ft)	Separation Factor	Warning
0.0	0.0	0.0	0.0	0.0	0.0	-90.02	-90.02	0.0	-27.8	27.8				
100.0	100.0	100.0	100.0	0.1	0.1	-90.02	-90.02	0.0	-27.8	27.8	27.6	0.22	123.713	
200.0	200.0	200.0	200.0	0.3	0.3	-90.02	-90.02	0.0	-27.8	27.8	27.1	0.67	41.238	
300.0	300.0	300.0	300.0	0.6	0.6	-90.02	-90.02	0.0	-27.8	27.8	26.7	1.12	24.743	
400.0	400.0	400.0	400.0	0.8	0.8	-90.02	-90.02	0.0	-27.8	27.8	26.2	1.57	17.673	
500.0	500.0	500.0	500.0	1.0	1.0	-90.02	-90.02	0.0	-27.8	27.8	25.8	2.02	13.746	
600.0	600.0	600.0	600.0	1.2	1.2	-90.02	-90.02	0.0	-27.8	27.8	25.3	2.47	11.247	
700.0	700.0	700.0	700.0	1.5	1.5	-90.02	-90.02	0.0	-27.8	27.8	24.9	2.92	9.516	
800.0	800.0	800.0	800.0	1.7	1.7	-90.02	-90.02	0.0	-27.8	27.8	24.4	3.37	8.248	
900.0	900.0	900.0	900.0	1.9	1.9	-90.02	-90.02	0.0	-27.8	27.8	24.0	3.82	7.277	
1,000.0	1,000.0	1,000.0	1,000.0	2.1	2.1	-90.02	-90.02	0.0	-27.8	27.8	23.5	4.27	6.511 CC, ES	
1,100.0	1,100.0	1,100.0	1,100.0	2.3	2.4	154.23	154.23	0.0	-27.8	29.4	24.7	4.70	6.250	
1,200.0	1,199.8	1,199.8	1,199.8	2.5	2.6	158.01	158.01	0.0	-27.8	34.2	29.0	5.11	6.686	
1,307.2	1,306.6	1,306.6	1,306.6	2.8	2.8	162.68	162.68	0.0	-27.8	43.1	37.5	5.55	7.765	
1,400.0	1,398.9	1,398.9	1,398.9	3.0	3.0	165.90	165.90	0.0	-27.8	52.7	46.7	5.94	8.861	
1,500.0	1,498.3	1,498.3	1,498.3	3.2	3.3	168.27	168.27	0.0	-27.8	63.1	56.7	6.37	9.904	
1,600.0	1,597.7	1,597.7	1,597.7	3.5	3.5	169.96	169.96	0.0	-27.8	73.6	66.8	6.80	10.819	
1,700.0	1,697.2	1,697.2	1,697.2	3.7	3.7	171.23	171.23	0.0	-27.8	84.2	76.9	7.24	11.626	
1,800.0	1,796.6	1,796.6	1,796.6	4.0	3.9	172.22	172.22	0.0	-27.8	94.8	87.1	7.68	12.341	
1,900.0	1,896.0	1,896.0	1,896.0	4.3	4.1	173.00	173.00	0.0	-27.8	105.4	97.3	8.12	12.978	
2,000.0	1,995.4	1,995.4	1,995.4	4.5	4.4	173.65	173.65	0.0	-27.8	116.0	107.4	8.56	13.547	
2,100.0	2,094.9	2,094.9	2,094.9	4.8	4.6	174.18	174.18	0.0	-27.8	126.7	117.6	9.01	14.060	
2,200.0	2,194.3	2,194.3	2,194.3	5.1	4.8	174.64	174.64	0.0	-27.8	137.3	127.8	9.45	14.523	
2,300.0	2,293.7	2,293.7	2,293.7	5.4	5.0	175.02	175.02	0.0	-27.8	148.0	138.1	9.90	14.943	
2,400.0	2,393.1	2,393.1	2,393.1	5.7	5.3	175.36	175.36	0.0	-27.8	158.6	148.3	10.35	15.325	
2,500.0	2,492.6	2,492.6	2,492.6	6.0	5.5	175.65	175.65	0.0	-27.8	169.3	158.5	10.80	15.675	
2,600.0	2,592.0	2,592.0	2,592.0	6.2	5.7	175.91	175.91	0.0	-27.8	180.0	168.7	11.25	15.996	
2,700.0	2,691.4	2,691.4	2,691.4	6.5	5.9	176.14	176.14	0.0	-27.8	190.6	178.9	11.70	16.292	
2,800.0	2,790.8	2,790.8	2,790.8	6.8	6.2	176.34	176.34	0.0	-27.8	201.3	189.2	12.15	16.565	
2,900.0	2,890.3	2,890.3	2,890.3	7.1	6.4	176.53	176.53	0.0	-27.8	212.0	199.4	12.61	16.817	
3,000.0	2,989.7	2,989.7	2,989.7	7.4	6.6	176.70	176.70	0.0	-27.8	222.7	209.6	13.06	17.052	
3,100.0	3,089.1	3,095.0	3,095.0	7.7	6.8	176.60	176.60	-1.4	-27.1	232.2	218.7	13.50	17.204	
3,200.0	3,188.5	3,201.4	3,201.2	8.0	7.0	175.91	175.91	-6.4	-24.7	239.0	225.1	13.91	17.177	
3,300.0	3,288.0	3,307.9	3,307.3	8.3	7.2	174.64	174.64	-14.9	-20.6	243.0	228.7	14.34	16.952	
3,400.0	3,387.4	3,409.3	3,408.0	8.6	7.4	173.05	173.05	-25.4	-15.5	245.3	230.5	14.76	16.614	
3,500.0	3,486.8	3,509.0	3,507.1	8.9	7.6	171.49	171.49	-35.8	-10.5	247.6	232.4	15.20	16.294	
3,600.0	3,586.2	3,608.7	3,606.1	9.2	7.8	169.96	169.96	-46.2	-5.5	250.1	234.5	15.64	15.993	
3,700.0	3,685.7	3,708.5	3,705.2	9.5	8.0	168.46	168.46	-56.7	-0.4	252.8	236.7	16.09	15.709	
3,800.0	3,785.1	3,808.2	3,804.3	9.8	8.2	166.99	166.99	-67.1	4.6	255.6	239.1	16.56	15.442	
3,900.0	3,884.5	3,908.0	3,903.3	10.1	8.4	165.56	165.56	-77.5	9.6	258.7	241.6	17.03	15.189	
4,000.0	3,983.9	4,007.7	4,002.4	10.4	8.7	164.16	164.16	-88.0	14.7	261.8	244.3	17.51	14.952	
4,100.0	4,083.4	4,107.5	4,101.5	10.7	8.9	162.80	162.80	-98.4	19.7	265.2	247.2	18.01	14.728	
4,200.0	4,182.8	4,207.2	4,200.6	11.0	9.1	161.46	161.46	-108.8	24.8	268.7	250.1	18.51	14.516	
4,300.0	4,282.2	4,307.0	4,299.6	11.3	9.4	160.17	160.17	-119.3	29.8	272.3	253.3	19.02	14.317	
4,400.0	4,381.6	4,406.7	4,398.7	11.6	9.6	158.91	158.91	-129.7	34.8	276.0	256.5	19.54	14.129	
4,500.0	4,481.1	4,506.5	4,497.8	11.9	9.9	157.68	157.68	-140.1	39.9	279.9	259.8	20.06	13.952	
4,600.0	4,580.5	4,606.2	4,596.8	12.2	10.1	156.49	156.49	-150.6	44.9	283.9	263.3	20.60	13.785	
4,700.0	4,679.9	4,706.0	4,695.9	12.5	10.4	155.33	155.33	-161.0	50.0	288.1	266.9	21.14	13.627	
4,800.0	4,779.4	4,805.7	4,795.0	12.8	10.7	154.20	154.20	-171.4	55.0	292.3	270.6	21.69	13.479	
4,900.0	4,878.8	4,905.5	4,894.1	13.1	10.9	153.11	153.11	-181.8	60.0	296.7	274.4	22.24	13.339	
5,000.0	4,978.2	5,004.1	4,992.0	13.4	11.2	152.08	152.08	-192.1	65.0	301.2	278.4	22.79	13.213	

CC - Min centre to center distance or convergent point, SF - min separation factor, ES - min ellipse separation

Diana 6T-HZ Pad Sec.6-T6N-R65W - Diana 6T-241 - Wellbore #1 - Plan #1 (1-25-13)													Offset Site Error: 0.0 ft	
Survey Program: 0-MWD													Offset Well Error: 0.0 ft	
Reference		Offset		Semi Major Axis			Distance							Warning
Measured Depth (ft)	Vertical Depth (ft)	Measured Depth (ft)	Vertical Depth (ft)	Reference (ft)	Offset (ft)	Highside Toolface (°)	Offset Wellbore Centre +N/-S (ft)	+E/-W (ft)	Between Centres (ft)	Between Ellipses (ft)	Minimum Separation (ft)	Separation Factor		
5,100.0	5,077.6	5,100.0	5,087.6	13.7	11.4	151.50	-199.9	68.8	306.8	283.5	23.30	13.164		
5,200.0	5,177.1	5,195.0	5,182.4	14.0	11.6	151.48	-204.8	71.1	313.8	290.0	23.77	13.199		
5,216.4	5,193.4	5,210.7	5,198.1	14.1	11.7	151.53	-205.4	71.4	315.1	291.2	23.85	13.213		
5,300.0	5,276.6	5,290.3	5,277.7	14.3	11.8	151.93	-206.9	72.2	321.1	296.9	24.19	13.273		
5,400.0	5,376.4	5,389.1	5,376.4	14.5	12.0	152.46	-207.0	72.2	326.4	301.9	24.55	13.298		
5,500.0	5,476.4	5,489.0	5,476.4	14.6	12.2	152.69	-207.0	72.2	328.7	303.8	24.90	13.203		
5,523.6	5,500.0	5,512.6	5,500.0	14.7	12.3	-90.00	-207.0	72.2	328.8	303.8	24.98	13.161		
5,600.0	5,576.4	5,589.0	5,576.4	14.8	12.4	-90.00	-207.0	72.2	328.8	303.5	25.28	13.006		
5,700.0	5,676.4	5,689.0	5,676.4	15.0	12.6	-90.00	-207.0	72.2	328.8	303.1	25.67	12.810		
5,800.0	5,776.4	5,789.0	5,776.4	15.1	12.8	-90.00	-207.0	72.2	328.8	302.7	26.06	12.619		
5,900.0	5,876.4	5,889.0	5,876.4	15.3	13.1	-90.00	-207.0	72.2	328.8	302.4	26.45	12.433		
6,000.0	5,976.4	5,989.0	5,976.4	15.5	13.3	-90.00	-207.0	72.2	328.8	302.0	26.84	12.251		
6,100.0	6,076.4	6,089.0	6,076.4	15.6	13.5	-90.00	-207.0	72.2	328.8	301.6	27.23	12.073		
6,200.0	6,176.4	6,189.0	6,176.4	15.8	13.7	-90.00	-207.0	72.2	328.8	301.2	27.63	11.901		
6,300.0	6,276.4	6,289.0	6,276.4	16.0	13.9	-90.00	-207.0	72.2	328.8	300.8	28.03	11.732		
6,329.5	6,305.9	6,318.5	6,305.9	16.0	13.9	-89.90	-206.4	72.2	328.8	300.7	28.14	11.686		
6,400.0	6,376.4	6,388.5	6,375.5	16.2	14.1	-88.87	-200.5	72.2	328.9	300.5	28.35	11.601		
6,469.9	6,446.3	6,456.2	6,442.2	16.3	14.2	-86.82	-188.7	72.2	329.3	300.8	28.49	11.559		
6,500.0	6,476.4	6,484.8	6,470.0	16.3	14.2	-85.75	-182.0	72.2	329.8	301.2	28.53	11.557		
6,550.0	6,526.2	6,531.8	6,515.1	16.4	14.2	-83.94	-168.7	72.2	330.7	302.1	28.59	11.567		
6,600.0	6,575.7	6,578.2	6,558.7	16.5	14.3	-82.17	-152.9	72.2	332.0	303.4	28.64	11.593		
6,650.0	6,624.7	6,624.0	6,600.8	16.5	14.3	-80.46	-134.6	72.2	333.6	304.9	28.68	11.632		
6,700.0	6,672.9	6,669.4	6,641.2	16.6	14.4	-78.81	-114.1	72.2	335.4	306.7	28.72	11.681		
6,750.0	6,720.1	6,714.3	6,680.0	16.6	14.4	-77.22	-91.6	72.3	337.5	308.7	28.75	11.738		
6,800.0	6,766.2	6,758.7	6,717.0	16.6	14.5	-75.70	-67.0	72.3	339.7	310.9	28.78	11.800		
6,850.0	6,810.9	6,802.8	6,752.2	16.7	14.5	-74.25	-40.6	72.3	342.0	313.2	28.82	11.865		
6,900.0	6,854.0	6,846.4	6,785.6	16.7	14.6	-72.88	-12.4	72.3	344.4	315.6	28.87	11.930		
6,950.0	6,895.4	6,889.7	6,817.0	16.7	14.6	-71.60	17.4	72.3	346.9	318.0	28.94	11.990		
7,000.0	6,934.8	6,932.7	6,846.5	16.7	14.7	-70.40	48.6	72.3	349.5	320.4	29.01	12.044		
7,050.0	6,972.2	6,975.3	6,874.0	16.7	14.9	-69.28	81.3	72.4	352.0	322.8	29.12	12.088		
7,100.0	7,007.3	7,017.7	6,899.4	16.8	15.0	-68.25	115.1	72.4	354.4	325.2	29.24	12.120		
7,150.0	7,040.0	7,059.9	6,922.8	16.8	15.2	-67.30	150.2	72.4	356.8	327.4	29.40	12.136		
7,200.0	7,070.2	7,100.0	6,943.3	16.8	15.4	-66.48	184.7	72.4	359.0	329.4	29.58	12.135		
7,250.0	7,097.7	7,143.5	6,963.4	16.9	15.7	-65.68	223.3	72.5	361.1	331.2	29.83	12.103		
7,300.0	7,122.4	7,185.1	6,980.5	17.0	16.0	-65.00	261.1	72.5	363.0	332.9	30.13	12.048		
7,350.0	7,144.2	7,226.4	6,995.5	17.2	16.3	-64.40	299.7	72.5	364.7	334.3	30.48	11.965		
7,400.0	7,163.0	7,267.7	7,008.3	17.5	16.6	-63.90	338.9	72.5	366.3	335.4	30.90	11.854		
7,450.0	7,178.8	7,308.8	7,019.0	17.9	17.0	-63.48	378.6	72.5	367.5	336.2	31.38	11.714		
7,500.0	7,191.4	7,350.0	7,027.5	18.3	17.4	-63.14	418.9	72.6	368.6	336.7	31.92	11.545		
7,550.0	7,200.8	7,390.9	7,033.8	18.8	17.8	-62.89	459.3	72.6	369.4	336.8	32.55	11.348		
7,589.9	7,206.0	7,423.5	7,037.3	19.2	18.2	-62.75	491.7	72.6	369.8	336.7	33.10	11.173		
7,600.0	7,207.1	7,431.8	7,038.0	19.3	18.3	-62.73	500.0	72.6	369.9	336.6	33.27	11.120		
7,663.9	7,213.8	7,483.9	7,040.1	20.0	18.8	-62.27	552.0	72.7	371.8	337.5	34.31	10.838		
7,700.0	7,217.0	7,518.2	7,040.0	20.4	19.3	-61.78	586.3	72.7	373.3	338.5	34.86	10.710		
7,787.2	7,220.0	7,605.3	7,039.8	21.4	20.3	-61.26	673.4	72.7	374.9	338.4	36.47	10.280		
7,800.0	7,220.0	7,618.1	7,039.8	21.6	20.5	-61.26	686.3	72.7	374.9	338.1	36.77	10.197		
7,900.0	7,219.7	7,718.1	7,039.5	22.9	21.9	-61.26	786.3	72.8	374.9	335.8	39.13	9.580		
8,000.0	7,219.4	7,818.1	7,039.2	24.3	23.3	-61.26	886.3	72.9	374.9	333.2	41.65	9.001		
8,100.0	7,219.1	7,918.1	7,038.9	25.7	24.8	-61.26	986.3	72.9	374.8	330.6	44.29	8.464		
8,200.0	7,218.9	8,018.1	7,038.6	27.3	26.3	-61.26	1,086.3	73.0	374.8	327.8	47.03	7.970		
8,300.0	7,218.6	8,118.1	7,038.4	28.8	27.9	-61.26	1,186.3	73.0	374.8	324.9	49.86	7.517		

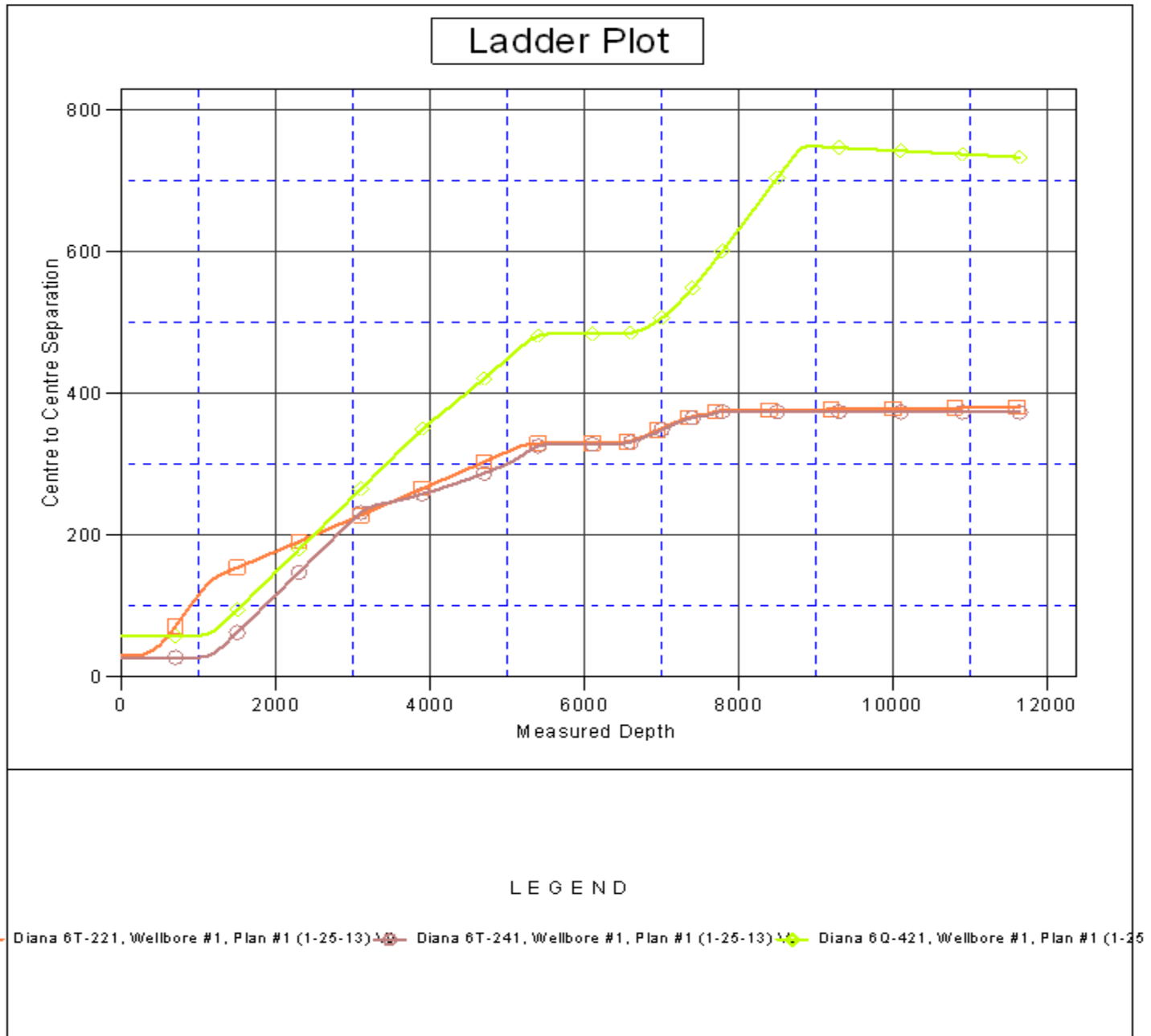
Company:	PETROLEUM DEVELOPMENT CORP Weld County CO	Local Co-ordinate Reference:	Well Diana 6T-401
Project:	SEC.6-T6N-R65W	TVD Reference:	WELL @ 4810.0ft (RKB -15')
Reference Site:	Diana 6T-HZ Pad Sec.6-T6N-R65W	MD Reference:	WELL @ 4810.0ft (RKB -15')
Site Error:	0.0ft	North Reference:	True
Reference Well:	Diana 6T-401	Survey Calculation Method:	Minimum Curvature
Well Error:	0.0ft	Output errors are at	2.00 sigma
Reference Wellbore	Wellbore #1	Database:	Landmark
Reference Design:	Plan #1 (1-25-13)	Offset TVD Reference:	Offset Datum

Offset Design Diana 6T-HZ Pad Sec.6-T6N-R65W - Diana 6T-241 - Wellbore #1 - Plan #1 (1-25-13)												Offset Site Error:	0.0 ft
Survey Program: 0-MWD												Offset Well Error:	0.0 ft
Reference		Offset		Semi Major Axis			Distance					Warning	
Measured Depth	Vertical Depth	Measured Depth	Vertical Depth	Reference	Offset	Highside Toolface	Offset Wellbore Centre		Between Centres	Between Ellipses	Minimum Separation		Separation Factor
(ft)	(ft)	(ft)	(ft)	(ft)	(ft)	(°)	+N/-S (ft)	+E/-W (ft)	(ft)	(ft)	(ft)		
8,400.0	7,218.3	8,218.1	7,038.1	30.4	29.6	-61.26	1,286.3	73.1	374.8	322.0	52.77	7.103	
8,500.0	7,218.0	8,318.1	7,037.8	32.1	31.3	-61.26	1,386.3	73.2	374.8	319.0	55.73	6.724	
8,600.0	7,217.7	8,418.1	7,037.5	33.7	33.0	-61.26	1,486.3	73.2	374.8	316.0	58.75	6.379	
8,700.0	7,217.4	8,518.1	7,037.2	35.4	34.7	-61.26	1,586.3	73.3	374.7	312.9	61.82	6.062	
8,800.0	7,217.1	8,618.1	7,037.0	37.1	36.4	-61.26	1,686.3	73.3	374.7	309.8	64.92	5.772	
8,900.0	7,216.9	8,718.1	7,036.7	38.9	38.2	-61.26	1,786.3	73.4	374.7	306.6	68.05	5.506	
9,000.0	7,216.6	8,818.1	7,036.4	40.6	39.9	-61.26	1,886.3	73.5	374.7	303.5	71.21	5.261	
9,100.0	7,216.3	8,918.1	7,036.1	42.4	41.7	-61.26	1,986.3	73.5	374.7	300.3	74.40	5.036	
9,200.0	7,216.0	9,018.1	7,035.9	44.1	43.5	-61.26	2,086.3	73.6	374.6	297.0	77.61	4.827	
9,300.0	7,215.7	9,118.1	7,035.6	45.9	45.3	-61.26	2,186.3	73.6	374.6	293.8	80.84	4.634	
9,400.0	7,215.4	9,218.1	7,035.3	47.7	47.2	-61.26	2,286.3	73.7	374.6	290.5	84.09	4.455	
9,500.0	7,215.1	9,318.1	7,035.0	49.5	49.0	-61.26	2,386.3	73.8	374.6	287.2	87.35	4.288	
9,600.0	7,214.8	9,418.1	7,034.7	51.4	50.8	-61.26	2,486.3	73.8	374.6	283.9	90.62	4.133	
9,700.0	7,214.6	9,518.1	7,034.5	53.2	52.7	-61.26	2,586.3	73.9	374.5	280.6	93.91	3.988	
9,800.0	7,214.3	9,618.1	7,034.2	55.0	54.5	-61.26	2,686.3	73.9	374.5	277.3	97.21	3.853	
9,900.0	7,214.0	9,718.1	7,033.9	56.8	56.4	-61.26	2,786.3	74.0	374.5	274.0	100.52	3.726	
10,000.0	7,213.7	9,818.1	7,033.6	58.7	58.2	-61.26	2,886.3	74.1	374.5	270.7	103.83	3.607	
10,100.0	7,213.4	9,918.1	7,033.3	60.5	60.1	-61.26	2,986.2	74.1	374.5	267.3	107.16	3.495	
10,200.0	7,213.1	10,018.1	7,033.1	62.4	61.9	-61.26	3,086.2	74.2	374.5	264.0	110.49	3.389	
10,300.0	7,212.8	10,118.1	7,032.8	64.2	63.8	-61.26	3,186.2	74.2	374.4	260.6	113.83	3.289	
10,400.0	7,212.6	10,218.1	7,032.5	66.1	65.7	-61.26	3,286.2	74.3	374.4	257.2	117.18	3.195	
10,500.0	7,212.3	10,318.1	7,032.2	68.0	67.5	-61.26	3,386.2	74.4	374.4	253.9	120.53	3.106	
10,600.0	7,212.0	10,418.1	7,031.9	69.8	69.4	-61.26	3,486.2	74.4	374.4	250.5	123.88	3.022	
10,700.0	7,211.7	10,518.1	7,031.7	71.7	71.3	-61.25	3,586.2	74.5	374.4	247.1	127.24	2.942	
10,800.0	7,211.4	10,618.1	7,031.4	73.6	73.2	-61.25	3,686.2	74.5	374.3	243.7	130.61	2.866	
10,900.0	7,211.1	10,718.1	7,031.1	75.4	75.1	-61.25	3,786.2	74.6	374.3	240.4	133.97	2.794	
11,000.0	7,210.8	10,818.1	7,030.8	77.3	77.0	-61.25	3,886.2	74.7	374.3	237.0	137.35	2.725	
11,100.0	7,210.6	10,918.1	7,030.5	79.2	78.8	-61.25	3,986.2	74.7	374.3	233.6	140.72	2.660	
11,200.0	7,210.3	11,018.1	7,030.3	81.1	80.7	-61.25	4,086.2	74.8	374.3	230.2	144.10	2.597	
11,300.0	7,210.0	11,118.1	7,030.0	83.0	82.6	-61.25	4,186.2	74.8	374.3	226.8	147.48	2.538	
11,400.0	7,209.7	11,218.1	7,029.7	84.9	84.5	-61.25	4,286.2	74.9	374.2	223.4	150.87	2.481	
11,500.0	7,209.4	11,318.1	7,029.4	86.7	86.4	-61.25	4,386.2	75.0	374.2	220.0	154.26	2.426	
11,600.0	7,209.1	11,418.1	7,029.1	88.6	88.2	-61.25	4,486.2	75.0	374.2	216.6	157.58	2.375	
11,642.0	7,209.0	11,460.1	7,029.0	89.3	88.9	-61.25	4,528.2	75.1	374.2	215.5	158.72	2.358 SF	

Company:	PETROLEUM DEVELOPMENT CORP Weld County CO	Local Co-ordinate Reference:	Well Diana 6T-401
Project:	SEC.6-T6N-R65W	TVD Reference:	WELL @ 4810.0ft (RKB -15')
Reference Site:	Diana 6T-HZ Pad Sec.6-T6N-R65W	MD Reference:	WELL @ 4810.0ft (RKB -15')
Site Error:	0.0ft	North Reference:	True
Reference Well:	Diana 6T-401	Survey Calculation Method:	Minimum Curvature
Well Error:	0.0ft	Output errors are at	2.00 sigma
Reference Wellbore	Wellbore #1	Database:	Landmark
Reference Design:	Plan #1 (1-25-13)	Offset TVD Reference:	Offset Datum

Reference Depths are relative to WELL @ 4810.0ft (RKB -15')
Offset Depths are relative to Offset Datum
Central Meridian is -105.500000 °

Coordinates are relative to: Diana 6T-401
Coordinate System is US State Plane 1983, Colorado Northern Zone
Grid Convergence at Surface is: 0.51°



Company:	PETROLEUM DEVELOPMENT CORP Weld County CO	Local Co-ordinate Reference:	Well Diana 6T-401
Project:	SEC.6-T6N-R65W	TVD Reference:	WELL @ 4810.0ft (RKB -15')
Reference Site:	Diana 6T-HZ Pad Sec.6-T6N-R65W	MD Reference:	WELL @ 4810.0ft (RKB -15')
Site Error:	0.0ft	North Reference:	True
Reference Well:	Diana 6T-401	Survey Calculation Method:	Minimum Curvature
Well Error:	0.0ft	Output errors are at	2.00 sigma
Reference Wellbore	Wellbore #1	Database:	Landmark
Reference Design:	Plan #1 (1-25-13)	Offset TVD Reference:	Offset Datum

Reference Depths are relative to WELL @ 4810.0ft (RKB -15')
Offset Depths are relative to Offset Datum
Central Meridian is -105.500000 °

Coordinates are relative to: Diana 6T-401
Coordinate System is US State Plane 1983, Colorado Northern Zone
Grid Convergence at Surface is: 0.51°

