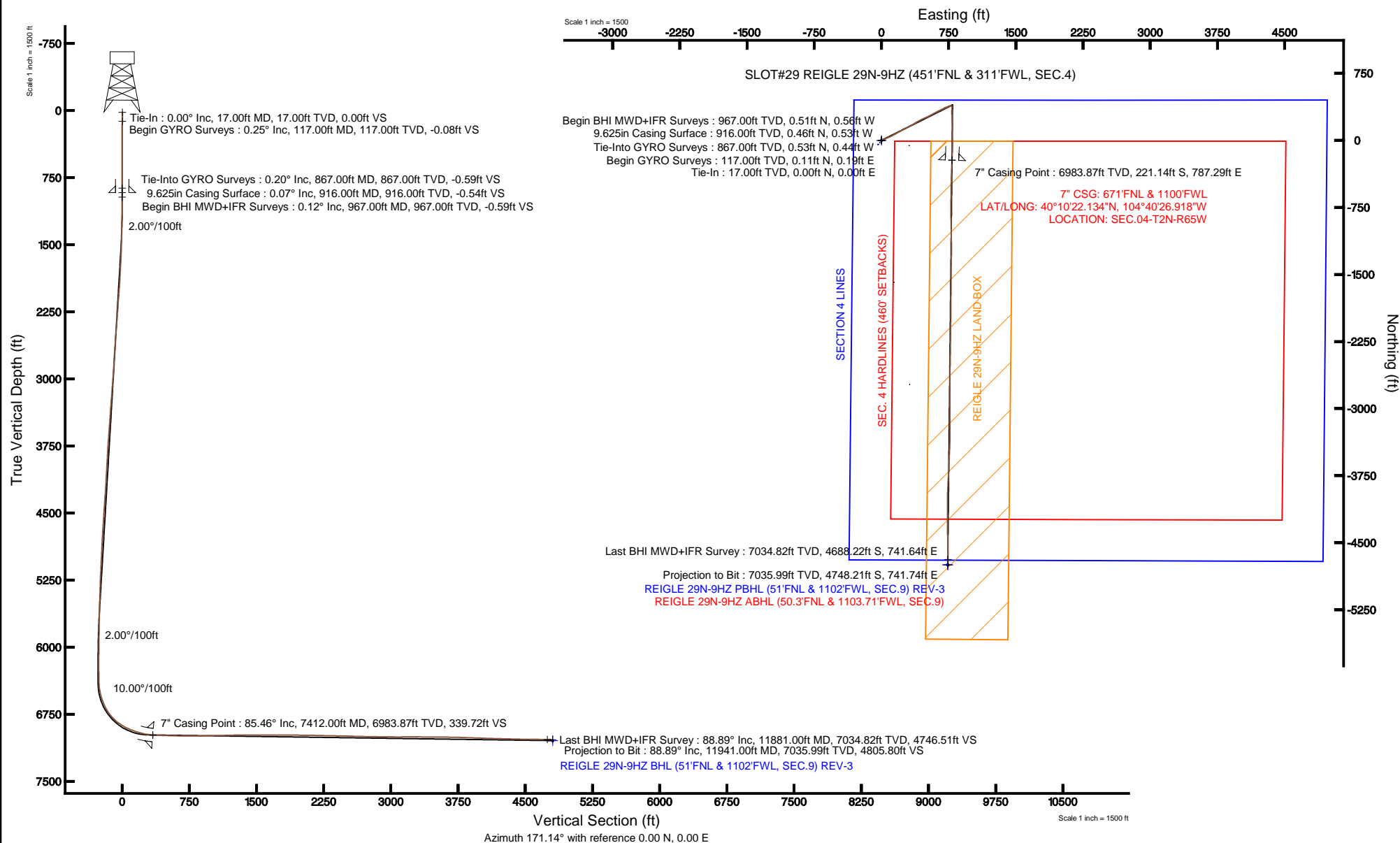


KERR-MCGEE OIL & GAS ONSHORE LP

Location: COLORADO Slot: SLOT#29 REIGLE 29N-9HZ (451'FNL & 311'FWL, SEC.4)
 Field: WELD COUNTY (KERR MCGEE) Well: REIGLE 29N-9HZ
 Facility: SEC.04-T2N-R65W Wellbore: REIGLE 29N-9HZ PWB

Plot reference wellpath is REIGLE 29N-9HZ (REV-C.0) PWP

True vertical depths are referenced to XTREME 6 (RKB)	Grid System: NAD83 / Lambert Colorado SP, Northern Zone (501), US feet
Measured depths are referenced to XTREME 6 (RKB)	North Reference: True north
XTREME 6 (RKB) to Mean Sea Level: 4886 feet	Scale: True distance
Mean Sea Level to Mud line (At Slot: SLOT#29 REIGLE 29N-9HZ (451'FNL & 311'FWL, SEC.4)): 0 feet	Depths are in feet
Coordinates are in feet referenced to Slot	Created by: wiljet02 on 2/22/2013





Actual Wellpath Report

REIGLE 29N-9HZ AWP

Page 1 of 7



REFERENCE WELLPATH IDENTIFICATION

Operator	KERR-MCGEE OIL & GAS ONSHORE LP	Slot	SLOT#29 REIGLE 29N-9HZ (451'FNL & 311'FWL, SEC.4)
Area	COLORADO	Well	REIGLE 29N-9HZ
Field	WELD COUNTY (KERR MCGEE)	Wellbore	REIGLE 29N-9HZ AWB
Facility	SEC.04-T2N-R65W		

REPORT SETUP INFORMATION

Projection System	NAD83 / Lambert Colorado SP, Northern Zone (501), US feet	Software System	WellArchitect® 3.0.2
North Reference	True	User	Wilsjef02
Scale	0.999958	Report Generated	2/22/2013 at 09:00:55
Convergence at slot	0.53° East	Database/Source file	WellArchitectDB/REIGLE_29N-9HZ_AWB.xml

WELLPATH LOCATION

	Local coordinates		Grid coordinates		Geographic coordinates	
	North[ft]	East[ft]	Easting[US ft]	Northing[US ft]	Latitude	Longitude
Slot Location	1769.06	-2183.39	3229987.65	1307087.87	40°10'24.319"N	104°40'37.060"W
Facility Reference Pt			3232187.42	1305339.42	40°10'06.838"N	104°40'08.933"W
Field Reference Pt			3197771.84	1268891.29	40°04'09.600"N	104°47'36.000"W

WELLPATH DATUM

Calculation method	Minimum curvature	XTREME 6 (RKB) to Facility Vertical Datum	4886.00ft
Horizontal Reference Pt	Slot	XTREME 6 (RKB) to Mean Sea Level	4886.00ft
Vertical Reference Pt	XTREME 6 (RKB)	XTREME 6 (RKB) to Mud Line at Slot (SLOT#29 REIGLE 29N-9HZ (451'FNL & 311'FWL, SEC.4))	4886.00ft
MD Reference Pt	XTREME 6 (RKB)	Section Origin	N 0.00, E 0.00 ft
Field Vertical Reference	Mean Sea Level	Section Azimuth	171.14°



Actual Wellpath Report

REIGLE 29N-9HZ AWP

Page 2 of 7



REFERENCE WELLPATH IDENTIFICATION

Operator	KERR-MCGEE OIL & GAS ONSHORE LP	Slot	SLOT#29 REIGLE 29N-9HZ (451'FNL & 311'FWL, SEC.4)
Area	COLORADO	Well	REIGLE 29N-9HZ
Field	WELD COUNTY (KERR MCGEE)	Wellbore	REIGLE 29N-9HZ AWB
Facility	SEC.04-T2N-R65W		

WELLPATH DATA (155 stations) † = interpolated/extrapolated station

MD [ft]	Inclination [°]	Azimuth [°]	TVD [ft]	Vert Sect [ft]	North [ft]	East [ft]	Latitude	Longitude	DLS [°/100ft]	Comments
0.00†	0.000	59.750	0.00	0.00	0.00	0.00	40°10'24.319"N	104°40'37.060"W	0.00	
17.00	0.000	59.750	17.00	0.00	0.00	0.00	40°10'24.319"N	104°40'37.060"W	0.00	Tie-In
117.00	0.250	59.750	117.00	-0.08	0.11	0.19	40°10'24.320"N	104°40'37.058"W	0.25	Begin GYRO Surveys
217.00	0.060	104.100	217.00	-0.14	0.21	0.43	40°10'24.321"N	104°40'37.054"W	0.21	
317.00	0.130	35.290	317.00	-0.20	0.29	0.54	40°10'24.322"N	104°40'37.053"W	0.12	
417.00	0.140	297.530	417.00	-0.35	0.44	0.50	40°10'24.323"N	104°40'37.054"W	0.20	
517.00	0.120	312.610	517.00	-0.51	0.56	0.32	40°10'24.325"N	104°40'37.056"W	0.04	
617.00	0.110	266.880	617.00	-0.60	0.63	0.14	40°10'24.325"N	104°40'37.058"W	0.09	
717.00	0.140	231.010	717.00	-0.55	0.55	-0.05	40°10'24.324"N	104°40'37.061"W	0.08	
817.00	0.200	296.220	817.00	-0.59	0.55	-0.30	40°10'24.324"N	104°40'37.064"W	0.19	
867.00	0.200	226.790	867.00	-0.59	0.53	-0.44	40°10'24.324"N	104°40'37.066"W	0.46	Tie-Into GYRO Surveys
967.00	0.120	6.200	967.00	-0.59	0.51	-0.56	40°10'24.324"N	104°40'37.067"W	0.30	Begin BHI MWD+IFR Surveys
1057.00	0.740	46.230	1056.99	-1.01	1.01	-0.13	40°10'24.329"N	104°40'37.062"W	0.73	
1148.00	2.210	47.040	1147.96	-2.33	2.61	1.58	40°10'24.345"N	104°40'37.040"W	1.62	
1239.00	3.840	54.430	1238.83	-4.69	5.58	5.34	40°10'24.374"N	104°40'36.991"W	1.84	
1330.00	4.990	68.540	1329.56	-6.92	8.80	11.51	40°10'24.406"N	104°40'36.912"W	1.73	
1420.00	6.760	72.530	1419.09	-8.57	11.82	20.20	40°10'24.436"N	104°40'36.800"W	2.02	
1510.00	8.660	70.690	1508.27	-10.59	15.65	31.65	40°10'24.474"N	104°40'36.652"W	2.13	
1595.00	10.390	72.200	1592.10	-12.94	20.11	44.99	40°10'24.518"N	104°40'36.480"W	2.06	
1680.00	11.530	66.140	1675.55	-16.33	25.89	60.06	40°10'24.575"N	104°40'36.286"W	1.91	
1765.00	11.340	65.640	1758.86	-20.77	32.77	75.44	40°10'24.643"N	104°40'36.088"W	0.25	
1851.00	11.580	68.710	1843.15	-24.89	39.40	91.18	40°10'24.708"N	104°40'35.885"W	0.76	
1936.00	12.030	63.220	1926.35	-29.45	46.48	107.04	40°10'24.778"N	104°40'35.681"W	1.42	
2021.00	12.410	60.250	2009.42	-35.43	55.01	122.88	40°10'24.863"N	104°40'35.477"W	0.86	
2106.00	11.720	59.340	2092.55	-41.90	63.94	138.23	40°10'24.951"N	104°40'35.279"W	0.84	
2190.00	11.290	60.930	2174.86	-47.90	72.29	152.76	40°10'25.033"N	104°40'35.092"W	0.64	
2275.00	11.830	61.150	2258.13	-53.76	80.53	167.66	40°10'25.115"N	104°40'34.900"W	0.64	
2360.00	11.580	60.780	2341.37	-59.71	88.90	182.74	40°10'25.198"N	104°40'34.706"W	0.31	
2445.00	10.940	60.040	2424.73	-65.58	97.10	197.18	40°10'25.279"N	104°40'34.520"W	0.77	
2531.00	11.270	60.510	2509.12	-71.48	105.31	211.56	40°10'25.360"N	104°40'34.335"W	0.40	
2616.00	11.610	57.200	2592.43	-77.88	114.03	225.98	40°10'25.446"N	104°40'34.149"W	0.87	
2701.00	11.630	60.410	2675.69	-84.38	122.89	240.62	40°10'25.533"N	104°40'33.960"W	0.76	
2787.00	11.760	65.820	2759.91	-89.77	130.77	256.15	40°10'25.611"N	104°40'33.760"W	1.28	
2872.00	12.800	64.900	2842.96	-94.69	138.31	272.58	40°10'25.686"N	104°40'33.548"W	1.24	
2957.00	12.670	64.950	2925.87	-99.92	146.25	289.55	40°10'25.764"N	104°40'33.330"W	0.15	
3042.00	13.110	62.190	3008.73	-105.65	154.69	306.53	40°10'25.848"N	104°40'33.111"W	0.89	
3127.00	12.550	61.410	3091.61	-111.90	163.61	323.16	40°10'25.936"N	104°40'32.897"W	0.69	
3213.00	12.000	61.820	3175.64	-118.01	172.30	339.25	40°10'26.022"N	104°40'32.690"W	0.65	
3298.00	12.290	60.380	3258.74	-124.14	180.95	354.90	40°10'26.107"N	104°40'32.488"W	0.49	
3383.00	11.210	58.440	3341.96	-130.54	189.74	369.80	40°10'26.194"N	104°40'32.296"W	1.35	
3468.00	10.540	60.350	3425.43	-136.49	197.91	383.60	40°10'26.275"N	104°40'32.118"W	0.89	
3553.00	10.890	59.230	3508.95	-142.25	205.87	397.26	40°10'26.353"N	104°40'31.942"W	0.48	
3638.00	11.560	60.550	3592.32	-148.24	214.16	411.57	40°10'26.435"N	104°40'31.758"W	0.84	
3724.00	12.070	61.240	3676.50	-154.33	222.73	426.96	40°10'26.520"N	104°40'31.560"W	0.62	
3809.00	10.780	61.700	3759.81	-160.00	230.77	441.75	40°10'26.599"N	104°40'31.369"W	1.52	



Actual Wellpath Report

REIGLE 29N-9HZ AWP

Page 3 of 7



REFERENCE WELLPATH IDENTIFICATION

Operator	KERR-MCGEE OIL & GAS ONSHORE LP	Slot	SLOT#29 REIGLE 29N-9HZ (451'FNL & 311'FWL, SEC.4)
Area	COLORADO	Well	REIGLE 29N-9HZ
Field	WELD COUNTY (KERR MCGEE)	Wellbore	REIGLE 29N-9HZ AWB
Facility	SEC.04-T2N-R65W		

WELLPATH DATA (155 stations)

MD [ft]	Inclination [°]	Azimuth [°]	TVD [ft]	Vert Sect [ft]	North [ft]	East [ft]	Latitude	Longitude	DLS [°/100ft]	Comments
3894.00	11.380	65.710	3843.23	-164.88	237.99	456.39	40°10'26.671"N	104°40'31.181"W	1.15	
3979.00	12.140	66.400	3926.44	-169.38	245.02	472.23	40°10'26.740"N	104°40'30.977"W	0.91	
4064.00	12.150	66.830	4009.54	-173.87	252.11	488.64	40°10'26.810"N	104°40'30.765"W	0.11	
4149.00	12.140	66.250	4092.64	-178.38	259.23	505.04	40°10'26.881"N	104°40'30.554"W	0.14	
4234.00	11.600	63.640	4175.82	-183.25	266.63	520.88	40°10'26.954"N	104°40'30.350"W	0.90	
4319.00	10.830	60.630	4259.20	-188.61	274.34	535.50	40°10'27.030"N	104°40'30.161"W	1.14	
4405.00	11.150	61.220	4343.62	-194.28	282.30	549.83	40°10'27.109"N	104°40'29.977"W	0.39	
4489.00	12.040	62.660	4425.91	-199.82	290.24	564.73	40°10'27.187"N	104°40'29.785"W	1.11	
4575.00	11.390	62.430	4510.12	-205.39	298.29	580.22	40°10'27.267"N	104°40'29.585"W	0.76	
4659.00	10.960	62.460	4592.52	-210.61	305.82	594.66	40°10'27.341"N	104°40'29.399"W	0.51	
4743.00	10.440	61.950	4675.06	-215.67	313.09	608.45	40°10'27.413"N	104°40'29.222"W	0.63	
4828.00	10.060	60.780	4758.71	-220.79	320.34	621.73	40°10'27.484"N	104°40'29.051"W	0.51	
4913.00	10.050	64.390	4842.40	-225.51	327.17	634.90	40°10'27.552"N	104°40'28.881"W	0.74	
4998.00	9.100	64.180	4926.22	-229.61	333.30	647.64	40°10'27.613"N	104°40'28.717"W	1.12	
5083.00	9.160	64.650	5010.14	-233.49	339.12	659.80	40°10'27.670"N	104°40'28.560"W	0.11	
5169.00	9.060	63.050	5095.05	-237.53	345.12	672.02	40°10'27.729"N	104°40'28.403"W	0.32	
5254.00	8.630	63.720	5179.04	-241.52	350.98	683.71	40°10'27.787"N	104°40'28.252"W	0.52	
5339.00	7.970	65.430	5263.15	-245.03	356.25	694.78	40°10'27.839"N	104°40'28.109"W	0.83	
5424.00	7.310	65.660	5347.40	-248.07	360.93	705.07	40°10'27.886"N	104°40'27.977"W	0.78	
5509.00	6.400	66.420	5431.79	-250.71	365.06	714.34	40°10'27.926"N	104°40'27.858"W	1.08	
5595.00	5.840	67.570	5517.30	-252.96	368.64	722.78	40°10'27.962"N	104°40'27.749"W	0.67	
5680.00	5.440	66.700	5601.89	-254.98	371.89	730.48	40°10'27.994"N	104°40'27.650"W	0.48	
5764.00	4.890	68.650	5685.55	-256.75	374.77	737.47	40°10'28.022"N	104°40'27.560"W	0.69	
5849.00	4.590	68.160	5770.25	-258.29	377.35	744.00	40°10'28.048"N	104°40'27.475"W	0.36	
5934.00	4.490	70.510	5854.99	-259.67	379.73	750.29	40°10'28.071"N	104°40'27.394"W	0.25	
6019.00	4.210	70.580	5939.74	-260.86	381.87	756.37	40°10'28.093"N	104°40'27.316"W	0.33	
6104.00	3.670	72.120	6024.54	-261.86	383.75	761.90	40°10'28.111"N	104°40'27.245"W	0.65	
6190.00	3.500	76.640	6110.37	-262.49	385.20	767.08	40°10'28.125"N	104°40'27.178"W	0.38	
6275.00	3.250	81.730	6195.23	-262.67	386.14	771.98	40°10'28.135"N	104°40'27.115"W	0.46	
6360.00	3.040	90.000	6280.10	-262.30	386.49	776.62	40°10'28.138"N	104°40'27.055"W	0.59	
6420.00	2.860	93.430	6340.02	-261.74	386.40	779.71	40°10'28.137"N	104°40'27.015"W	0.42	
6439.00	2.870	97.070	6359.00	-261.51	386.31	780.65	40°10'28.136"N	104°40'27.003"W	0.96	
6482.00	3.580	119.900	6401.93	-260.37	385.51	782.89	40°10'28.129"N	104°40'26.974"W	3.38	
6524.00	6.170	157.980	6443.78	-257.35	382.76	784.87	40°10'28.101"N	104°40'26.949"W	9.55	
6567.00	9.640	171.550	6486.37	-251.50	377.06	786.26	40°10'28.045"N	104°40'26.931"W	9.11	
6609.00	14.220	177.640	6527.46	-242.85	368.42	786.99	40°10'27.960"N	104°40'26.922"W	11.29	
6652.00	17.580	182.280	6568.81	-231.23	356.65	786.95	40°10'27.843"N	104°40'26.922"W	8.35	
6695.00	21.670	183.390	6609.30	-217.09	342.23	786.23	40°10'27.701"N	104°40'26.931"W	9.55	
6737.00	24.390	182.010	6647.95	-201.00	325.82	785.46	40°10'27.539"N	104°40'26.941"W	6.60	
6780.00	27.950	178.970	6686.54	-182.29	306.87	785.33	40°10'27.351"N	104°40'26.943"W	8.84	
6822.00	33.360	177.310	6722.65	-161.04	285.47	786.05	40°10'27.140"N	104°40'26.934"W	13.04	
6865.00	37.980	176.080	6757.58	-136.09	260.45	787.51	40°10'26.893"N	104°40'26.915"W	10.87	
6907.00	43.440	177.800	6789.40	-108.85	233.11	788.95	40°10'26.622"N	104°40'26.896"W	13.27	
6950.00	48.560	177.850	6819.26	-78.14	202.21	790.12	40°10'26.317"N	104°40'26.881"W	11.91	
6993.00	52.760	178.890	6846.52	-45.16	168.97	791.06	40°10'25.989"N	104°40'26.869"W	9.94	



Actual Wellpath Report

REIGLE 29N-9HZ AWP

Page 4 of 7



REFERENCE WELLPATH IDENTIFICATION

Operator	KERR-MCGEE OIL & GAS ONSHORE LP	Slot	SLOT#29 REIGLE 29N-9HZ (451'FNL & 311'FWL, SEC.4)
Area	COLORADO	Well	REIGLE 29N-9HZ
Field	WELD COUNTY (KERR MCGEE)	Wellbore	REIGLE 29N-9HZ AWB
Facility	SEC.04-T2N-R65W		

WELLPATH DATA (155 stations) † = interpolated/extrapolated station

MD [ft]	Inclination [°]	Azimuth [°]	TVD [ft]	Vert Sect [ft]	North [ft]	East [ft]	Latitude	Longitude	DLS [°/100ft]	Comments
7035.00	57.520	179.360	6870.52	-11.04	134.52	791.58	40°10'25.648"N	104°40'26.863"W	11.37	
7077.00	60.960	179.450	6891.99	24.67	98.44	791.96	40°10'25.292"N	104°40'26.858"W	8.19	
7120.00	65.560	178.560	6911.34	62.70	60.06	792.63	40°10'24.912"N	104°40'26.849"W	10.86	
7162.00	68.260	178.870	6927.81	101.00	21.43	793.49	40°10'24.531"N	104°40'26.838"W	6.46	
7205.00	71.830	179.860	6942.48	140.99	-18.98	793.94	40°10'24.131"N	104°40'26.832"W	8.58	
7247.00	73.860	180.790	6954.87	180.61	-59.10	793.71	40°10'23.735"N	104°40'26.835"W	5.28	
7290.00	77.500	182.470	6965.50	221.57	-100.74	792.52	40°10'23.323"N	104°40'26.851"W	9.27	
7332.00	80.050	182.850	6973.68	261.93	-141.89	790.61	40°10'22.917"N	104°40'26.875"W	6.14	
7379.00	83.070	182.210	6980.57	307.50	-188.33	788.56	40°10'22.458"N	104°40'26.902"W	6.57	
7412.00†	85.457	182.210	6983.87	339.72	-221.14	787.29	40°10'22.134"N	104°40'26.918"W	7.23	7" Casing Point
7422.00	86.180	182.210	6984.60	349.51	-231.10	786.91	40°10'22.035"N	104°40'26.923"W	7.23	
7482.00	88.120	182.130	6987.59	408.33	-290.98	784.64	40°10'21.443"N	104°40'26.952"W	3.24	
7568.00	88.210	181.780	6990.34	492.76	-376.89	781.70	40°10'20.594"N	104°40'26.990"W	0.42	
7653.00	88.670	181.760	6992.65	576.27	-461.82	779.08	40°10'19.755"N	104°40'27.024"W	0.54	
7738.00	89.440	180.800	6994.06	659.93	-546.78	777.18	40°10'18.916"N	104°40'27.048"W	1.45	
7823.00	90.330	180.560	6994.23	743.75	-631.78	776.17	40°10'18.076"N	104°40'27.061"W	1.08	
7909.00	89.500	180.430	6994.35	828.61	-717.77	775.43	40°10'17.226"N	104°40'27.071"W	0.98	
7994.00	91.410	179.670	6993.68	912.58	-802.77	775.36	40°10'16.386"N	104°40'27.072"W	2.42	
8079.00	91.320	178.990	6991.65	996.69	-887.73	776.35	40°10'15.546"N	104°40'27.059"W	0.81	
8164.00	91.290	178.640	6989.72	1080.90	-972.69	778.11	40°10'14.707"N	104°40'27.037"W	0.41	
8250.00	91.350	179.320	6987.74	1166.08	-1058.66	779.64	40°10'13.857"N	104°40'27.017"W	0.79	
8335.00	91.260	178.720	6985.80	1250.25	-1143.62	781.09	40°10'13.018"N	104°40'26.998"W	0.71	
8422.00	90.240	180.280	6984.66	1336.32	-1230.61	781.85	40°10'12.158"N	104°40'26.988"W	2.14	
8507.00	90.300	181.500	6984.26	1420.09	-1315.60	780.53	40°10'11.318"N	104°40'27.006"W	1.44	
8592.00	90.300	181.060	6983.82	1503.76	-1400.57	778.63	40°10'10.478"N	104°40'27.030"W	0.52	
8677.00	89.750	180.140	6983.78	1587.60	-1485.57	777.74	40°10'09.638"N	104°40'27.042"W	1.26	
8762.00	89.470	180.780	6984.36	1671.48	-1570.56	777.06	40°10'08.799"N	104°40'27.050"W	0.82	
8848.00	89.290	180.270	6985.29	1756.32	-1656.55	776.27	40°10'07.949"N	104°40'27.061"W	0.63	
8933.00	90.270	180.110	6985.61	1840.26	-1741.55	775.99	40°10'07.109"N	104°40'27.064"W	1.17	
9018.00	89.810	180.950	6985.56	1924.12	-1826.55	775.20	40°10'06.269"N	104°40'27.074"W	1.13	
9103.00	89.440	180.480	6986.11	2007.94	-1911.54	774.14	40°10'05.429"N	104°40'27.088"W	0.70	
9188.00	89.100	180.150	6987.19	2091.84	-1996.53	773.67	40°10'04.589"N	104°40'27.094"W	0.56	
9274.00	88.700	180.660	6988.85	2176.71	-2082.51	773.07	40°10'03.739"N	104°40'27.102"W	0.75	
9359.00	88.340	180.740	6991.04	2260.50	-2167.48	772.03	40°10'02.900"N	104°40'27.115"W	0.43	
9444.00	89.350	181.010	6992.75	2344.26	-2252.45	770.73	40°10'02.060"N	104°40'27.132"W	1.23	
9529.00	89.100	180.890	6993.90	2428.01	-2337.43	769.32	40°10'01.220"N	104°40'27.150"W	0.33	
9614.00	88.460	181.100	6995.71	2511.74	-2422.39	767.85	40°10'00.381"N	104°40'27.169"W	0.79	
9699.00	87.870	180.850	6998.44	2595.44	-2507.34	766.40	40°09'59.541"N	104°40'27.188"W	0.75	
9784.00	89.290	180.570	7000.54	2679.23	-2592.30	765.35	40°09'58.702"N	104°40'27.202"W	1.70	
9869.00	88.640	179.620	7002.08	2763.18	-2677.29	765.21	40°09'57.862"N	104°40'27.203"W	1.35	
9954.00	89.630	180.220	7003.36	2847.18	-2762.28	765.32	40°09'57.022"N	104°40'27.202"W	1.36	
10039.00	89.350	180.820	7004.12	2931.04	-2847.27	764.55	40°09'56.182"N	104°40'27.212"W	0.78	
10124.00	88.920	179.870	7005.40	3014.93	-2932.26	764.04	40°09'55.342"N	104°40'27.219"W	1.23	
10209.00	90.330	180.210	7005.96	3098.91	-3017.25	763.98	40°09'54.502"N	104°40'27.219"W	1.71	
10293.00	90.150	180.280	7005.60	3181.85	-3101.25	763.62	40°09'53.672"N	104°40'27.224"W	0.23	



Actual Wellpath Report

REIGLE 29N-9HZ AWP

Page 5 of 7



REFERENCE WELLPATH IDENTIFICATION

Operator	KERR-MCGEE OIL & GAS ONSHORE LP	Slot	SLOT#29 REIGLE 29N-9HZ (451'FNL & 311'FWL, SEC.4)
Area	COLORADO	Well	REIGLE 29N-9HZ
Field	WELD COUNTY (KERR MCGEE)	Wellbore	REIGLE 29N-9HZ AWB
Facility	SEC.04-T2N-R65W		

WELLPATH DATA (155 stations)

MD [ft]	Inclination [°]	Azimuth [°]	TVD [ft]	Vert Sect [ft]	North [ft]	East [ft]	Latitude	Longitude	DLS [°/100ft]	Comments
10378.00	89.930	179.480	7005.55	3265.86	-3186.25	763.80	40°09'52.832"N	104°40'27.222"W	0.98	
10463.00	89.560	180.120	7005.92	3349.89	-3271.25	764.10	40°09'51.992"N	104°40'27.218"W	0.87	
10548.00	89.870	180.210	7006.35	3433.84	-3356.25	763.85	40°09'51.152"N	104°40'27.221"W	0.38	
10633.00	89.470	182.300	7006.84	3517.51	-3441.22	761.99	40°09'50.313"N	104°40'27.245"W	2.50	
10719.00	89.380	183.000	7007.70	3601.78	-3527.12	758.02	40°09'49.464"N	104°40'27.296"W	0.82	
10804.00	89.010	182.790	7008.89	3684.99	-3612.01	753.72	40°09'48.625"N	104°40'27.352"W	0.50	
10889.00	88.450	182.470	7010.78	3768.26	-3696.90	749.82	40°09'47.786"N	104°40'27.402"W	0.76	
10974.00	87.780	183.260	7013.57	3851.44	-3781.74	745.58	40°09'46.948"N	104°40'27.457"W	1.22	
11060.00	88.610	182.580	7016.28	3935.59	-3867.59	741.20	40°09'46.099"N	104°40'27.513"W	1.25	
11145.00	87.780	181.600	7018.96	4019.00	-3952.49	738.10	40°09'45.260"N	104°40'27.553"W	1.51	
11230.00	88.020	180.640	7022.07	4102.66	-4037.41	736.44	40°09'44.421"N	104°40'27.575"W	1.16	
11315.00	88.730	179.570	7024.48	4186.58	-4122.38	736.28	40°09'43.581"N	104°40'27.577"W	1.51	
11399.00	88.490	180.170	7026.52	4269.59	-4206.35	736.47	40°09'42.752"N	104°40'27.574"W	0.77	
11484.00	88.080	179.870	7029.07	4353.53	-4291.31	736.45	40°09'41.912"N	104°40'27.575"W	0.60	
11569.00	89.560	178.510	7030.82	4437.67	-4376.28	737.65	40°09'41.072"N	104°40'27.559"W	2.36	
11654.00	89.350	179.170	7031.63	4521.90	-4461.26	739.37	40°09'40.233"N	104°40'27.537"W	0.81	
11739.00	89.320	179.230	7032.61	4606.06	-4546.25	740.55	40°09'39.393"N	104°40'27.522"W	0.08	
11823.00	89.070	179.620	7033.79	4689.17	-4630.23	741.40	40°09'38.563"N	104°40'27.511"W	0.55	
11881.00	88.890	179.900	7034.82	4746.51	-4688.22	741.64	40°09'37.990"N	104°40'27.508"W	0.57	Last BHI MWD+IFR Survey
11941.00	88.890	179.900	7035.99	4805.80	-4748.21	741.74	40°09'37.397"N	104°40'27.506"W	0.00	Projection to Bit

HOLE & CASING SECTIONS - Ref Wellbore: REIGLE 29N-9HZ AWB Ref Wellpath: REIGLE 29N-9HZ AWP

String/Diameter	Start MD [ft]	End MD [ft]	Interval [ft]	Start TVD [ft]	End TVD [ft]	Start N/S [ft]	Start E/W [ft]	End N/S [ft]	End E/W [ft]
13.5in Open Hole	17.00	916.00	899.00	17.00	916.00	0.00	0.00	0.46	-0.53
9.625in Casing Surface	17.00	916.00	899.00	17.00	916.00	0.00	0.00	0.46	-0.53
8.75in Open Hole	916.00	7422.00	6506.00	916.00	6984.60	0.46	-0.53	-231.10	786.91
7in Casing Intermediate	17.00	7412.00	7395.00	17.00	6983.87	0.00	0.00	-221.14	787.29
6.125in Open Hole	7412.00	11941.00	4529.00	6983.87	7035.99	-221.14	787.29	-4748.21	741.74



Actual Wellpath Report

REIGLE 29N-9HZ AWP

Page 6 of 7



REFERENCE WELLPATH IDENTIFICATION

Operator	KERR-MCGEE OIL & GAS ONSHORE LP	Slot	SLOT#29 REIGLE 29N-9HZ (451'FNL & 311'FWL, SEC.4)
Area	COLORADO	Well	REIGLE 29N-9HZ
Field	WELD COUNTY (KERR MCGEE)	Wellbore	REIGLE 29N-9HZ AWB
Facility	SEC.04-T2N-R65W		

TARGETS

Name	MD [ft]	TVD [ft]	North [ft]	East [ft]	Grid East [US ft]	Grid North [US ft]	Latitude	Longitude	Shape
SECTION 4 LINES		0.00	-44.83	-39.67	3229948.40	1307042.68	40°10'23.876"N	104°40'37.571"W	polygon
REIGLE 29N-9HZ BHL (51'FNL & 1102'FWL, SEC.9) REV-2		7001.00	-4748.91	740.03	3230771.69	1302346.24	40°09'37.390"N	104°40'27.529"W	point
REIGLE 29N-9HZ BHL ON PLAT (51'FNL & 1172'FWL, SEC.9) REV-1		7001.00	-4748.91	810.03	3230841.68	1302346.89	40°09'37.390"N	104°40'26.627"W	point
REIGLE 29N-9HZ LAND BOX		7001.00	0.00	0.00	3229987.65	1307087.87	40°10'24.319"N	104°40'37.060"W	polygon
REIGLE 29N-9HZ BHL (51'FNL & 1102'FWL, SEC.9) REV-3		7047.00	-4748.91	740.03	3230771.69	1302346.24	40°09'37.390"N	104°40'27.529"W	point
SEC. 4 HARDLINES (460' SETBACKS)		7220.00	-44.83	-39.67	3229948.40	1307042.68	40°10'23.876"N	104°40'37.571"W	polygon

WELLPATH COMPOSITION - Ref Wellbore: REIGLE 29N-9HZ AWB Ref Wellpath: REIGLE 29N-9HZ AWP

Start MD [ft]	End MD [ft]	Positional Uncertainty Model	Log Name/Comment	Wellbore
17.00	867.00	Generic gyro - continuous (Standard)	GYRODATA SURVEYS <117-867>	REIGLE 29N-9HZ AWB
867.00	7379.00	NaviTrak (MAGCORR,IFR)	BHI MWD+IFR SURVEYS 8 3/4" HOLE <967-7379>	REIGLE 29N-9HZ AWB
7379.00	11881.00	OnTrak (MAGCORR,IFR)	BHI MWD+IFR SURVEYS 6 1/8" HOLE <7422-11881>	REIGLE 29N-9HZ AWB
11881.00	11941.00	Blind Drilling (std)	Projection to bit	REIGLE 29N-9HZ AWB



Actual Wellpath Report

REIGLE 29N-9HZ AWP

Page 7 of 7



REFERENCE WELLPATH IDENTIFICATION

Operator	KERR-MCGEE OIL & GAS ONSHORE LP	Slot	SLOT#29 REIGLE 29N-9HZ (451'FNL & 311'FWL, SEC.4)
Area	COLORADO	Well	REIGLE 29N-9HZ
Field	WELD COUNTY (KERR MCGEE)	Wellbore	REIGLE 29N-9HZ AWB
Facility	SEC.04-T2N-R65W		

WELLPATH COMMENTS

MD [ft]	Inclination [°]	Azimuth [°]	TVD [ft]	Comment
17.00	0.000	59.750	17.00	Tie-In
117.00	0.250	59.750	117.00	Begin GYRO Surveys
867.00	0.200	226.790	867.00	Tie-Into GYRO Surveys
967.00	0.120	6.200	967.00	Begin BHI MWD+IFR Surveys
7412.00	85.457	182.210	6983.87	7" Casing Point
11881.00	88.890	179.900	7034.82	Last BHI MWD+IFR Survey
11941.00	88.890	179.900	7035.99	Projection to Bit