

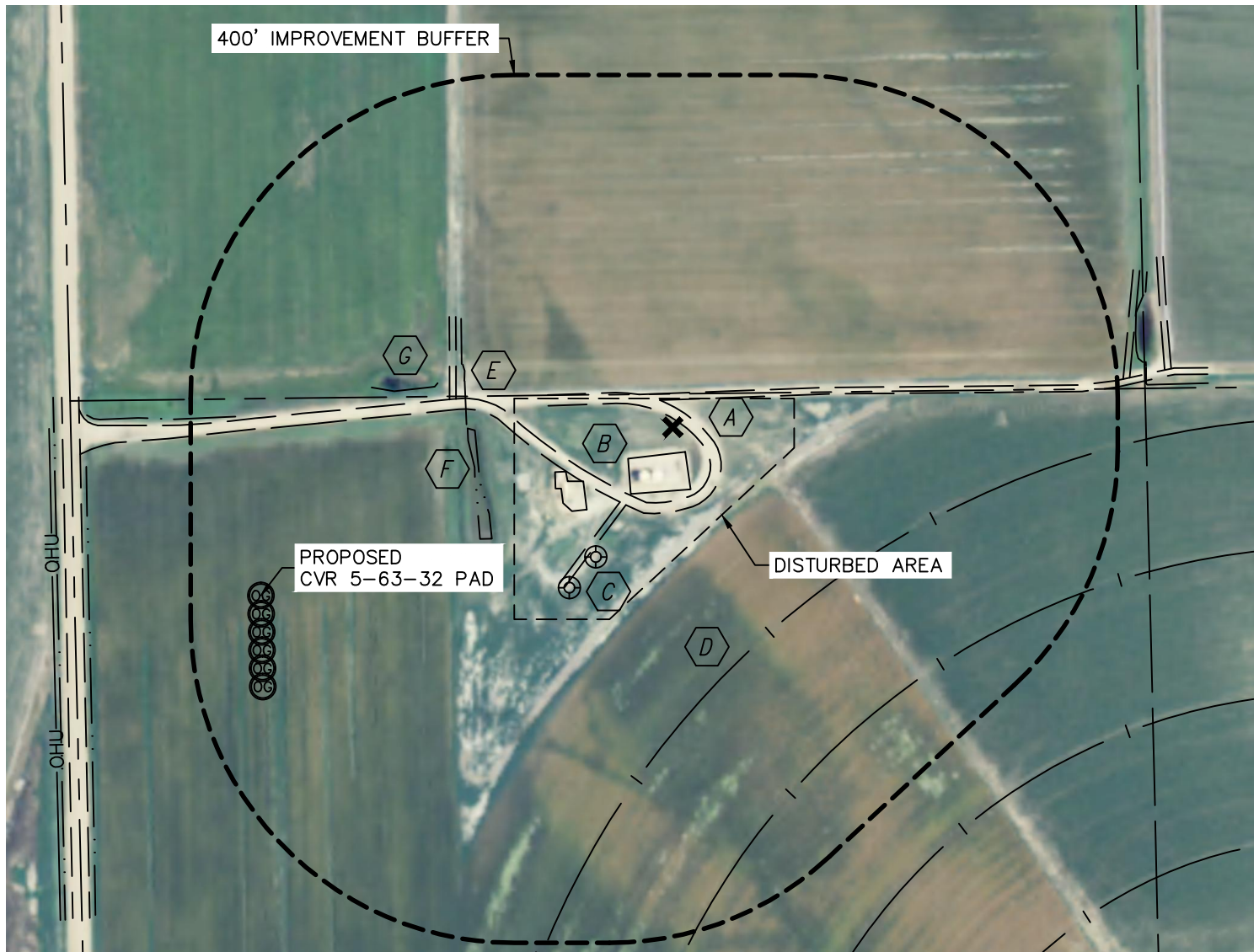


Lat40°, Inc. 1635 Foxtrail Drive, Suite 325 Loveland, CO 970-776-3321

PRODUCTION FACILITY LOCATION DRAWING

CVR 5-63-32 PAD



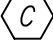


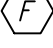

SECTION: 32
TOWNSHIP: 5N
RANGE: 63W




REFERENCE POINT LOCATION:

LAT: 40.35587°N
LONG: 104.46682°W
ELEV: 4578'
PDOP: 1.5
DATE: 12/13/2012
OPERATOR: WYATT HALL
1/41/4: NW1/4SW1/4
FSL: 2620'
FWL: 744'
DISTANCE TO WELL: 550'
ASSOCIATED NEW WELLS:
CVR 5-63-32-40H, 26H,
9H, 25H, 24H & 23H
ASSOCIATED EXISTING WELLS:
CENTENNIAL REIN 23-32 &
13-32

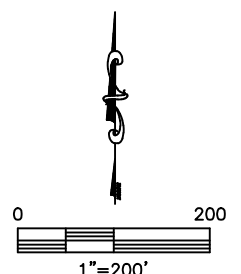
IMPROVEMENTS:

-  ACCESS ROAD 92' NE, 40' NW, 274' NW, 139' SW
-  EX. PRODUCTION EQUIPMENT (BILL BARRETT) 32' S, 129' SW
-  EX. WELL HEAD 187' & 236' SW
-  IRRIGATION PIVOT TRACK 271', 431' & 611' SE
-  DITCH 267' W
-  POND 244' & 541' W
-  LOW AREA 298' W

LEGEND

 - REFERENCE POINT
ALL DISTANCES ARE APPROXIMATE.

NEAREST: BUILDING 1312' NW (DWELLING),
PUBLIC ROAD 733' W (CR 63), ABOVE GROUND UTILITY 770' W,
RAILROAD 5280'+, PROPERTY LINE 41' N



DATE: rev2/26/2013
PROJECT#: 2012174