

# Well Name: Kintz 2

Surface Location: Kintz 1 Pad Sec.8-T3N-R68W  
 North American Datum 1983 US State Plane 1983 Colorado Northern Zone  
 Ground Elevation: 5079.0

+N/-S  
0.0

+E/-W  
0.0

Northing  
1331570.51

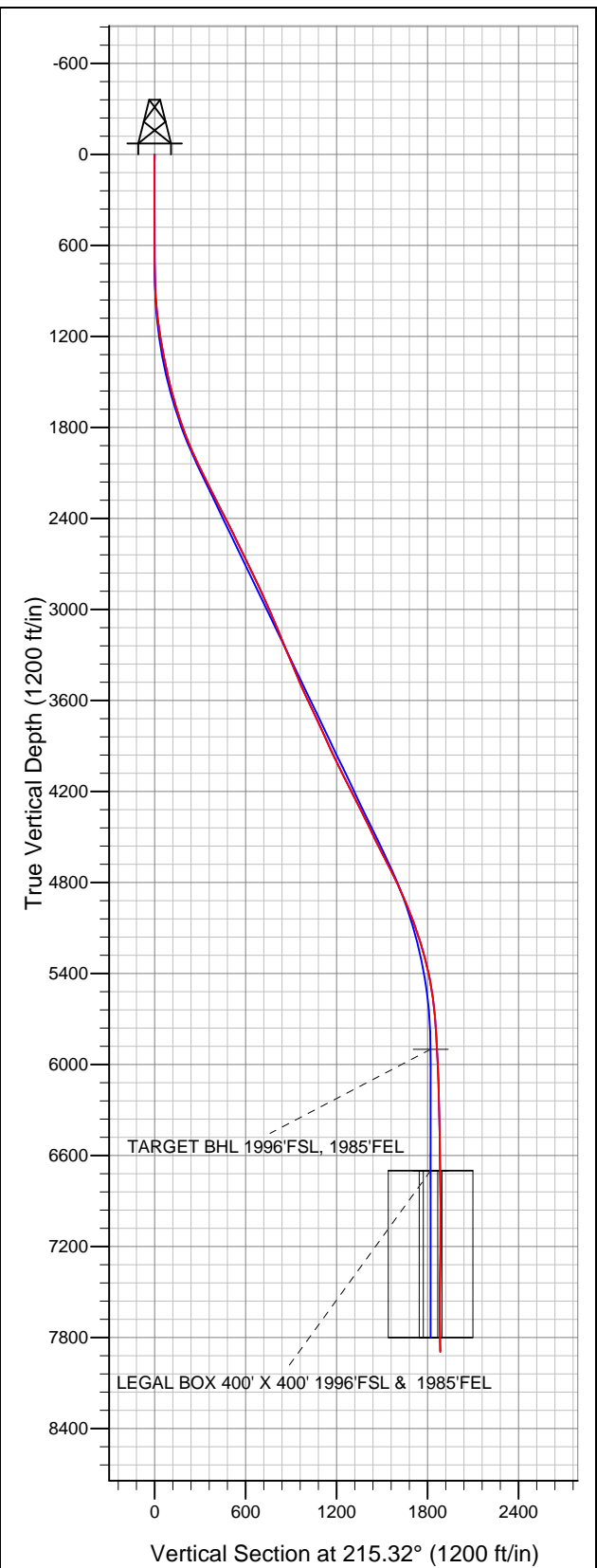
Easting  
3133746.31

Latitude  
40.242568

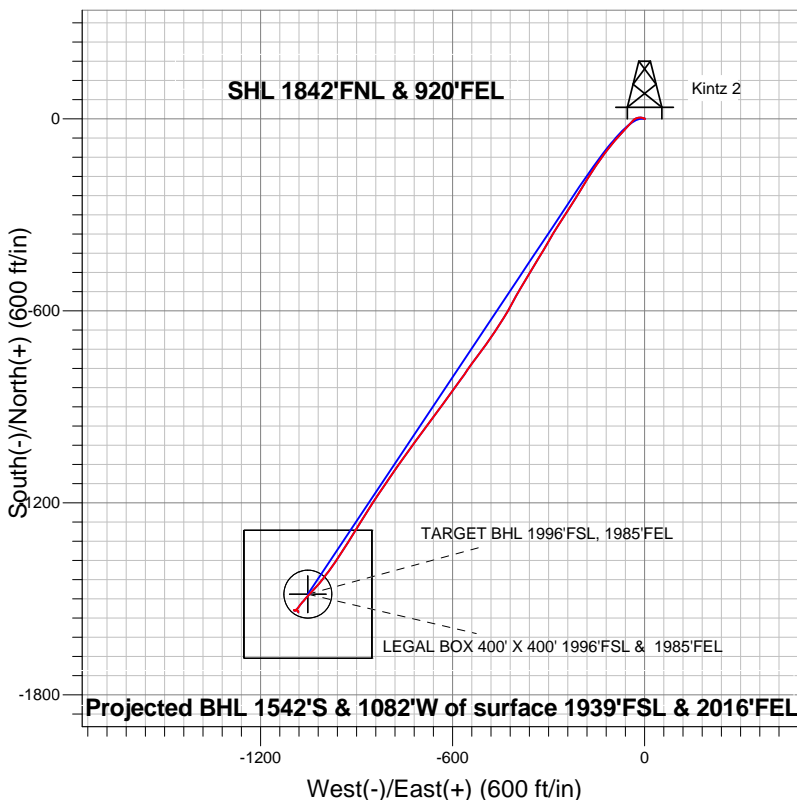
Longitude  
-105.020890

Slot

Original Well Elev WELL @ 5092.0ft (Original Well Elev)



## Top Operating Company



## LEGEND

- Kintz 2, Wellbore #1, Plan #2 (1-28-13) V0
- Wellbore #1
- Survey #1

## Final Survey Plot

Projected Final Survey -  
 8275'MD & 7894'TVD @ 1884'VS  
 1.0 deg Inc 176.6 deg AZ

Project: SEC.8-T3N-R68W  
 Site: Kintz 1 Pad Sec.8-T3N-R68W  
 Well: Kintz 2  
 Plan: Wellbore #1



## **Top Operating Company**

**SEC.8-T3N-R68W**

**Kintz 1 Pad Sec.8-T3N-R68W**

**Kintz 2**

**Wellbore #1**

**Survey: Survey #1**

## **Standard Survey Report**

**04 February, 2013**

Survey									
Measured Depth (ft)	Inclination (°)	Azimuth (°)	Vertical Depth (ft)	+N/-S (ft)	+E/-W (ft)	Vertical Section (ft)	Dogleg Rate (°/100ft)	Build Rate (°/100ft)	Turn Rate (°/100ft)
0.0	0.00	0.00	0.0	0.0	0.0	0.0	0.00	0.00	0.00
48.0	0.40	66.10	48.0	0.1	0.2	-0.1	0.83	0.83	0.00
137.0	0.20	31.80	137.0	0.3	0.5	-0.6	0.29	-0.22	-38.54
225.0	0.20	33.60	225.0	0.6	0.7	-0.9	0.01	0.00	2.05
328.0	0.40	287.90	328.0	0.8	0.4	-0.9	0.48	0.19	-102.62
391.0	0.60	271.60	391.0	0.9	-0.1	-0.7	0.39	0.32	-25.87
440.0	0.60	271.60	440.0	0.9	-0.6	-0.4	0.00	0.00	0.00
473.0	0.80	279.10	473.0	1.0	-1.0	-0.2	0.67	0.61	22.73
600.0	0.60	294.80	600.0	1.4	-2.5	0.3	0.22	-0.16	12.36
728.0	1.90	290.90	727.9	2.4	-5.1	1.0	1.02	1.02	-3.05
857.0	4.00	277.70	856.8	3.8	-11.5	3.6	1.70	1.63	-10.23
985.0	6.20	255.90	984.3	2.7	-22.7	10.9	2.26	1.72	-17.03
1,113.0	7.70	226.60	1,111.4	-4.9	-35.6	24.6	2.97	1.17	-22.89

<b>Company:</b>	Top Operating Company	<b>Local Co-ordinate Reference:</b>	Well Kintz 2
<b>Project:</b>	SEC.8-T3N-R68W	<b>TVD Reference:</b>	WELL @ 5092.0ft (Original Well Elev)
<b>Site:</b>	Kintz 1 Pad Sec.8-T3N-R68W	<b>MD Reference:</b>	WELL @ 5092.0ft (Original Well Elev)
<b>Well:</b>	Kintz 2	<b>North Reference:</b>	True
<b>Wellbore:</b>	Wellbore #1	<b>Survey Calculation Method:</b>	Minimum Curvature
<b>Design:</b>	Wellbore #1	<b>Database:</b>	Landmark

## Survey

Measured Depth (ft)	Inclination (°)	Azimuth (°)	Vertical Depth (ft)	+N/-S (ft)	+E/-W (ft)	Vertical Section (ft)	Dogleg Rate (°/100ft)	Build Rate (°/100ft)	Turn Rate (°/100ft)
1,241.0	9.90	221.10	1,237.8	-19.1	-49.1	43.9	1.84	1.72	-4.30
1,370.0	11.40	222.30	1,364.6	-36.8	-64.9	67.6	1.18	1.16	0.93
1,498.0	13.60	222.70	1,489.6	-57.3	-83.7	95.1	1.72	1.72	0.31
1,626.0	15.70	219.00	1,613.4	-81.8	-104.8	127.3	1.80	1.64	-2.89
1,755.0	17.90	216.20	1,736.9	-111.3	-127.5	164.5	1.82	1.71	-2.17
1,883.0	21.20	214.80	1,857.5	-146.2	-152.3	207.4	2.60	2.58	-1.09
2,011.0	24.30	210.60	1,975.5	-187.9	-178.9	256.8	2.73	2.42	-3.28
2,139.0	26.50	212.70	2,091.2	-234.6	-207.8	311.6	1.86	1.72	1.64
2,267.0	27.00	211.80	2,205.5	-283.4	-238.5	369.1	0.50	0.39	-0.70
2,395.0	27.00	212.90	2,319.5	-332.4	-269.6	427.1	0.39	0.00	0.86
2,524.0	27.20	209.70	2,434.4	-382.6	-300.1	485.7	1.14	0.16	-2.48
2,654.0	25.80	211.60	2,550.7	-432.5	-329.7	543.5	1.26	-1.08	1.46
2,782.0	25.90	211.10	2,665.9	-480.2	-358.7	599.2	0.19	0.08	-0.39
2,911.0	26.00	210.40	2,781.9	-528.7	-387.6	655.5	0.25	0.08	-0.54
3,039.0	24.70	207.90	2,897.6	-576.6	-414.3	709.9	1.32	-1.02	-1.95
3,167.0	23.90	212.30	3,014.2	-622.1	-440.6	762.4	1.55	-0.63	3.44
3,295.0	22.20	212.90	3,132.0	-664.3	-467.6	812.4	1.34	-1.33	0.47
3,423.0	22.60	215.30	3,250.4	-704.7	-495.0	861.2	0.78	0.31	1.88
3,552.0	22.80	217.80	3,369.4	-744.7	-524.6	910.9	0.76	0.16	1.94
3,680.0	23.20	214.40	3,487.2	-785.1	-554.1	960.9	1.08	0.31	-2.66
3,808.0	25.20	217.10	3,603.9	-827.6	-584.8	1,013.4	1.79	1.56	2.11
3,937.0	25.10	215.30	3,720.7	-871.9	-617.1	1,068.2	0.60	-0.08	-1.40
4,065.0	24.80	215.80	3,836.8	-915.8	-648.5	1,122.2	0.29	-0.23	0.39
4,193.0	25.30	216.00	3,952.7	-959.7	-680.3	1,176.4	0.40	0.39	0.16
4,322.0	25.60	216.90	4,069.2	-1,004.3	-713.2	1,231.8	0.38	0.23	0.70
4,450.0	28.10	216.40	4,183.4	-1,050.7	-747.7	1,289.6	1.96	1.95	-0.39
4,576.0	26.60	213.40	4,295.3	-1,098.1	-780.9	1,347.4	1.62	-1.19	-2.38
4,705.0	25.60	215.10	4,411.2	-1,145.0	-812.8	1,404.2	0.97	-0.78	1.32
4,833.0	26.30	212.70	4,526.3	-1,191.5	-844.0	1,460.2	0.99	0.55	-1.88
4,962.0	27.30	212.90	4,641.4	-1,240.4	-875.5	1,518.3	0.78	0.78	0.16
5,090.0	26.40	210.60	4,755.6	-1,289.5	-906.0	1,576.0	1.07	-0.70	-1.80
5,218.0	23.70	213.00	4,871.6	-1,335.6	-934.5	1,630.0	2.25	-2.11	1.88
5,347.0	21.90	214.60	4,990.5	-1,377.2	-962.2	1,680.0	1.48	-1.40	1.24
5,475.0	19.30	215.50	5,110.3	-1,414.1	-988.1	1,725.0	2.05	-2.03	0.70
5,603.0	16.50	218.10	5,232.1	-1,445.6	-1,011.6	1,764.4	2.27	-2.19	2.03
5,731.0	13.30	224.80	5,355.8	-1,470.3	-1,033.2	1,797.0	2.84	-2.50	5.23
5,860.0	10.10	220.60	5,482.1	-1,489.5	-1,051.0	1,822.9	2.57	-2.48	-3.26
5,988.0	7.00	222.20	5,608.6	-1,503.8	-1,063.6	1,841.9	2.43	-2.42	1.25
6,117.0	3.60	217.90	5,737.1	-1,512.8	-1,071.3	1,853.7	2.65	-2.64	-3.33
6,245.0	3.10	219.00	5,864.8	-1,518.7	-1,076.0	1,861.2	0.39	-0.39	0.86
6,373.0	2.50	214.10	5,992.7	-1,523.7	-1,079.7	1,867.4	0.50	-0.47	-3.83
6,501.0	1.80	213.70	6,120.6	-1,527.6	-1,082.4	1,872.2	0.55	-0.55	-0.31
6,629.0	1.80	219.40	6,248.5	-1,530.9	-1,084.8	1,876.3	0.14	0.00	4.45
6,757.0	0.70	225.20	6,376.5	-1,533.0	-1,086.6	1,879.0	0.86	-0.86	4.53
6,886.0	1.00	254.70	6,505.5	-1,533.8	-1,088.3	1,880.7	0.40	0.23	22.87
7,015.0	1.00	254.90	6,634.5	-1,534.4	-1,090.4	1,882.4	0.00	0.00	0.16
7,143.0	1.60	269.10	6,762.4	-1,534.7	-1,093.3	1,884.3	0.53	0.47	11.09
7,271.0	0.80	243.80	6,890.4	-1,535.2	-1,095.9	1,886.2	0.74	-0.63	-19.77
7,399.0	0.80	156.30	7,018.4	-1,536.4	-1,096.3	1,887.4	0.86	0.00	-68.36
7,528.0	2.00	87.30	7,147.4	-1,537.1	-1,093.7	1,886.5	1.45	0.93	-53.49
7,656.0	1.80	83.30	7,275.3	-1,536.7	-1,089.5	1,883.8	0.19	-0.16	-3.13
7,785.0	1.30	91.70	7,404.3	-1,536.6	-1,086.0	1,881.6	0.42	-0.39	6.51
7,913.0	1.00	121.80	7,532.2	-1,537.2	-1,083.6	1,880.7	0.52	-0.23	23.52
8,041.0	0.80	175.80	7,660.2	-1,538.7	-1,082.6	1,881.4	0.65	-0.16	42.19

<b>Company:</b>	Top Operating Company	<b>Local Co-ordinate Reference:</b>	Well Kintz 2
<b>Project:</b>	SEC.8-T3N-R68W	<b>TVD Reference:</b>	WELL @ 5092.0ft (Original Well Elev)
<b>Site:</b>	Kintz 1 Pad Sec.8-T3N-R68W	<b>MD Reference:</b>	WELL @ 5092.0ft (Original Well Elev)
<b>Well:</b>	Kintz 2	<b>North Reference:</b>	True
<b>Wellbore:</b>	Wellbore #1	<b>Survey Calculation Method:</b>	Minimum Curvature
<b>Design:</b>	Wellbore #1	<b>Database:</b>	Landmark

Survey									
Measured Depth (ft)	Inclination (°)	Azimuth (°)	Vertical Depth (ft)	+N/-S (ft)	+E/-W (ft)	Vertical Section (ft)	Dogleg Rate (°/100ft)	Build Rate (°/100ft)	Turn Rate (°/100ft)
8,231.0	1.00	176.60	7,850.2	-1,541.6	-1,082.4	1,883.7	0.11	0.11	0.42
8,275.0	1.00	176.60	7,894.2	-1,542.4	-1,082.4	1,884.3	0.00	0.00	0.00

Checked By: _____	Approved By: _____	Date: _____
-------------------	--------------------	-------------