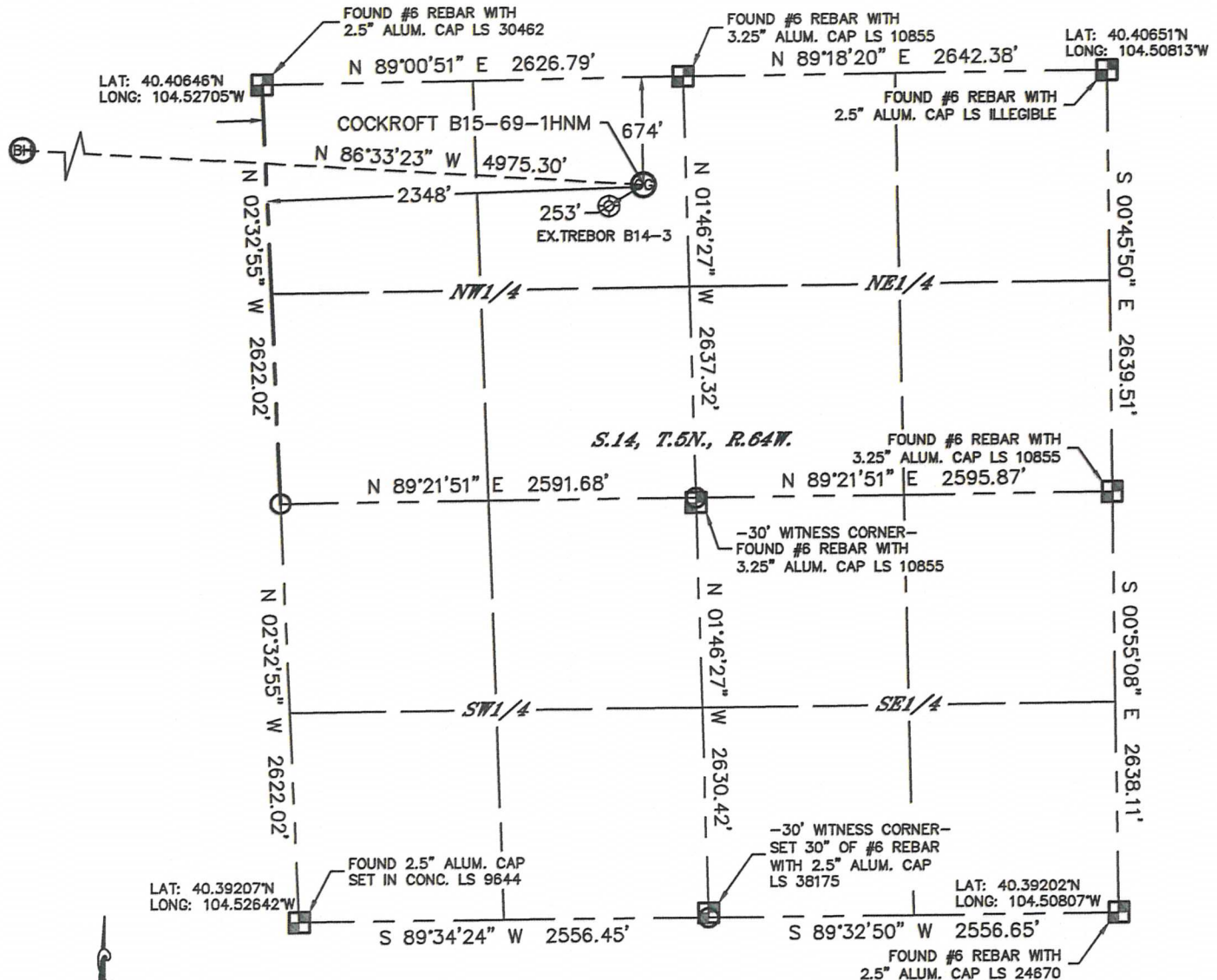


WELL LOCATION CERTIFICATE

SECTION: 14
TOWNSHIP: 5N
RANGE: 64W

THIS MAP DOES NOT REPRESENT A BOUNDARY SURVEY



In accordance with a request from Jacob Rice with Noble Energy Inc. Lat40°, Inc. has determined the surface location of the COCKROFT B15-69-1HNM to be 674' from the NORTH line and 2348' from the WEST line as measured at right angles from the section lines of Section 14, Township 5 North, Range 64 West and the bottom hole to be 330' from the NORTH line and 2600' from the EAST line as measured at right angles from the section lines of Section 15, Township 5 North, Range 64 West of the Sixth Principal Meridian, County of Weld, State of Colorado.

I hereby state that this Well Location Certificate was prepared by me, or under my direct supervision, that the fieldwork was completed on 3/16/2012, for and on behalf of Noble Energy Inc. That this is not a Land Survey Plat or an Improvement Survey Plat, and that it is not to be relied upon for establishment of fence, building, or other future improvement lines.

NOTE:

- 1) Bearings shown are Grid Bearings of the Colorado State Plane Coordinate System, North Zone, North American Datum 1983/2007. The lineal dimensions as contained herein are based upon the "U.S. Survey Foot."
- 2) Ground elevations are based on an observed GPS elevation (NAVD 1988 DATUM).
- 3) NEAREST EXISTING WELL: TREBOR B14-3, 253'
- 4) IMPROVEMENTS: See LOCATION DRAWING for all visible improvements within 400' of disturbed area.
- 5) SURFACE USE: CROP LAND
- 6) INSTRUMENT OPERATOR: ADAM KELLY

SURFACE LOCATION

LAT: 40.40465°N
LONG: 104.51854°W
PDOP: 2.3
ELEV: 4585'
1/4, 1/4: NE1/4NW1/4
NEAREST PROPERTY LINE: 208' SOUTH

BOTTOM HOLE

LAT: 40.40562°N
LONG: 104.53635°W

NOTE

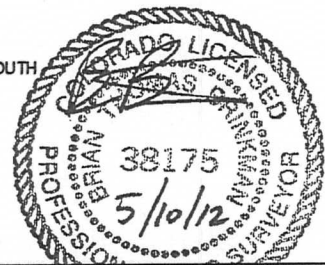
According to Colorado law, you must commence any legal action based upon any defect in this W.L.C. within three years after you discover such defect. In no event, may any action based upon any defect in this survey be commenced more than ten years after the date of the certificate shown hereon. (13-80-105 C.R.S.)

LEGEND

- = ALIQUOT MONUMENT AS DESCRIBED
- = CALCULATED POSITION

SHEET 1 OF 2

Brian T. Brinkman—On Behalf of Lat40°, Inc.
Colorado Licensed Professional Land Surveyor No. 38175
DATE: rev 5/10/12
PROJECT#: 2012029

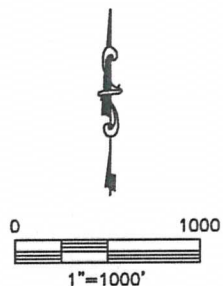
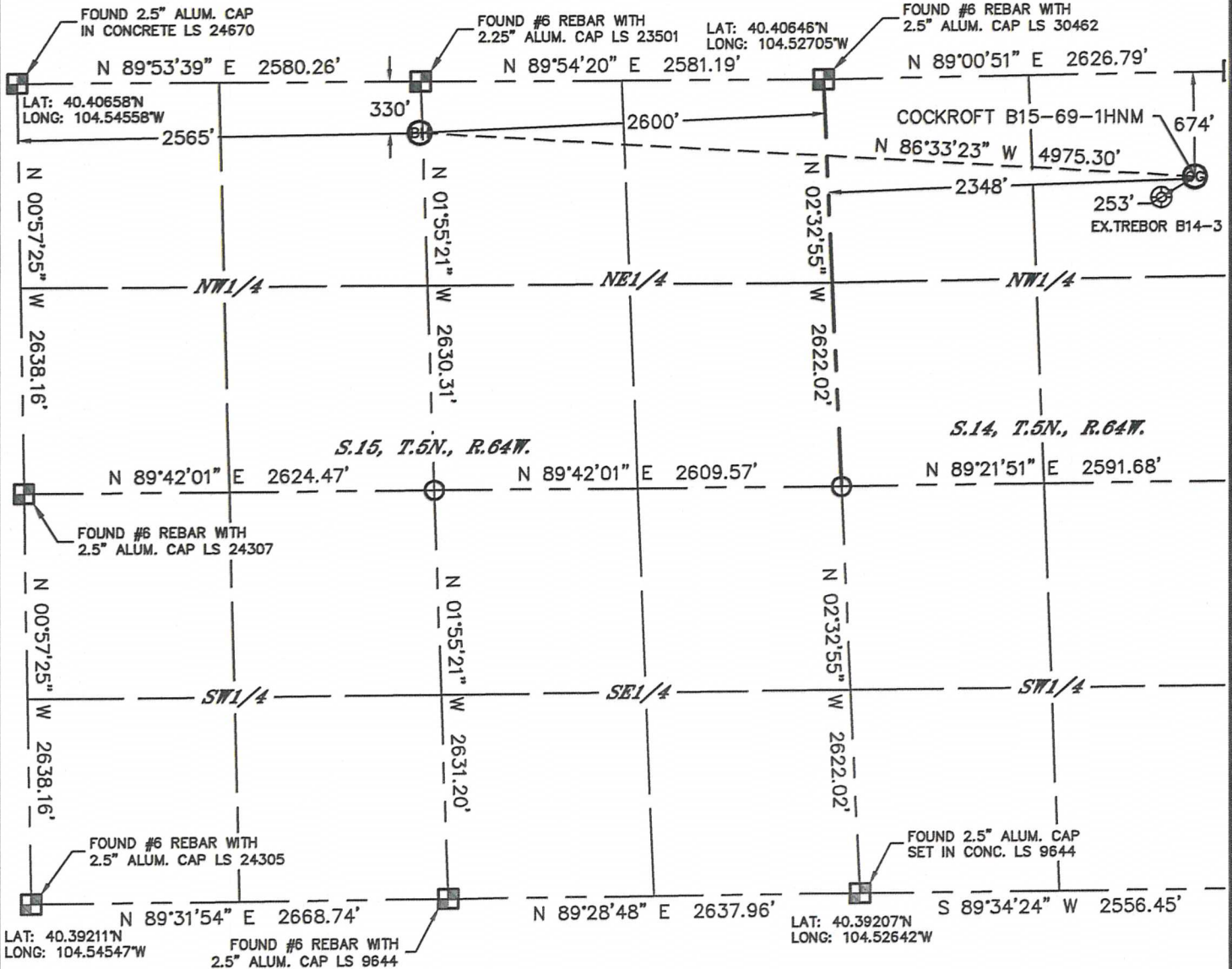


Lat40°, Inc. 1635 Foxtrail Drive, Suite 325 Loveland, CO 970-776-3321

WELL LOCATION CERTIFICATE

SECTION: 14
TOWNSHIP: 5N
RANGE: 64W

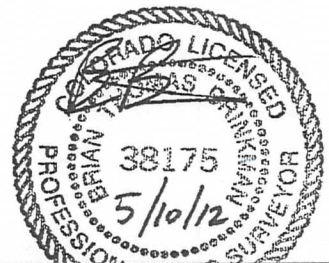
THIS MAP DOES NOT REPRESENT A BOUNDARY SURVEY



- LEGEND
- = ALIQUOT MONUMENT AS DESCRIBED
 - = CALCULATED POSITION

SHEET 2 OF 2

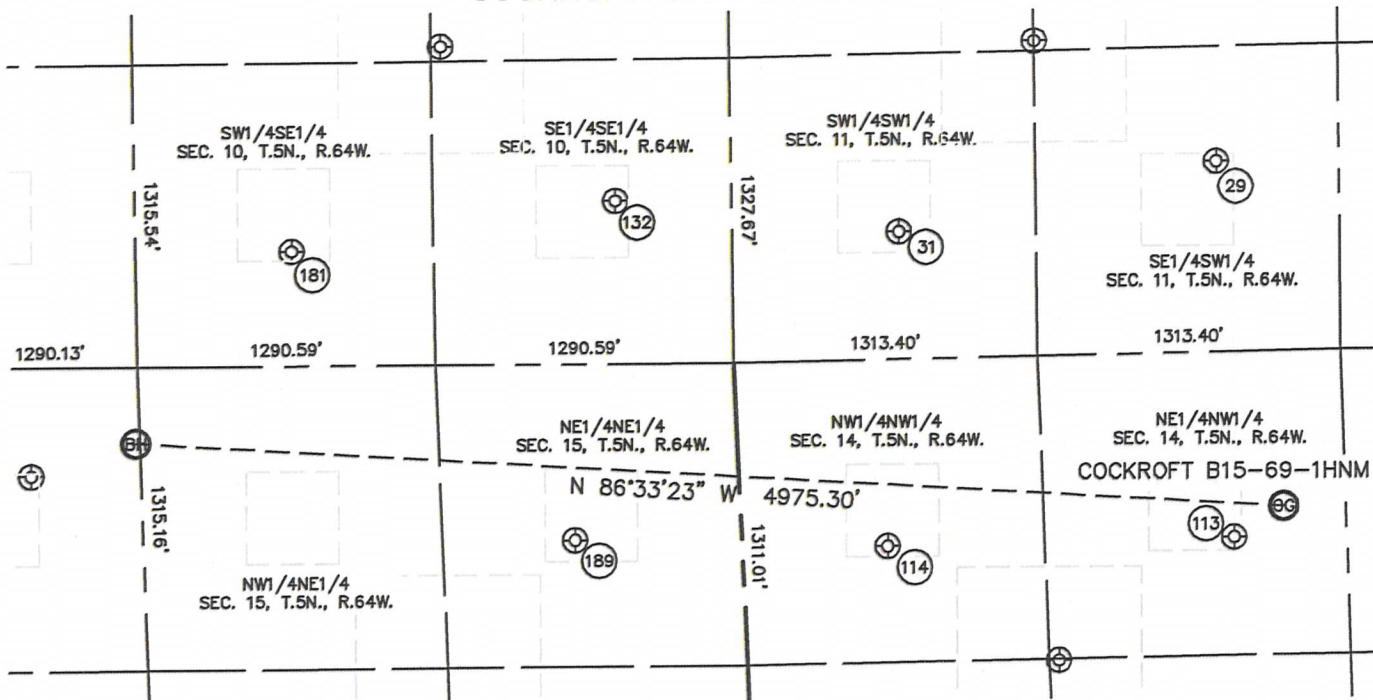
Brian T. Brinkman—On Behalf of Lat40°, Inc.
Colorado Licensed Professional Land Surveyor No. 38175
DATE: rev 5/10/12
PROJECT#: 2012029



SITE SKETCH

COCKROFT B15-69-1HNM

SECTION: 14
TOWNSHIP: 5N
RANGE: 64W



(29)
TREBOR B11-14
SE1/4SW1/4
830' FSL
2099' FWL
LAT-40.40877°N
LONG-104.51952°W
PDOP:1.3
ELEV: 4596'

(31)
TREBOR B11-13
SW1/4SW1/4
555' FSL
722' FWL
LAT-40.40799°N
LONG-104.52446°W
PDOP:1.3
ELEV: 4600'

(113)
TREBOR B14-3
NE1/4NW1/4
803' FNL
2127' FWL
LAT-40.40429°N
LONG-104.51931°W
PDOP:1.3
ELEV: 4585'

(114)
TREBOR B14-4
NW1/4NW1/4
808' FNL
627' FWL
LAT-40.40425°N
LONG-104.52470°W
PDOP:1.9
ELEV: 4586'

(132)
SLW B10-16
SE1/4SE1/4
710' FSL
503' FEL
LAT-40.40842°N
LONG-104.52886°W
PDOP:1.3
ELEV: 4602'

(181)
TREBOR B10-15
SW1/4SE1/4
500' FSL
1906' FEL
LAT-40.40788°N
LONG-104.53389°W
PDOP:1.3
ELEV: 4596'

(189)
LOUSTALET 41-15
NE1/4NE1/4
762' FNL
721' FEL
LAT-40.40438°N
LONG-104.52955°W
PDOP:2.1
ELEV: 4574'

