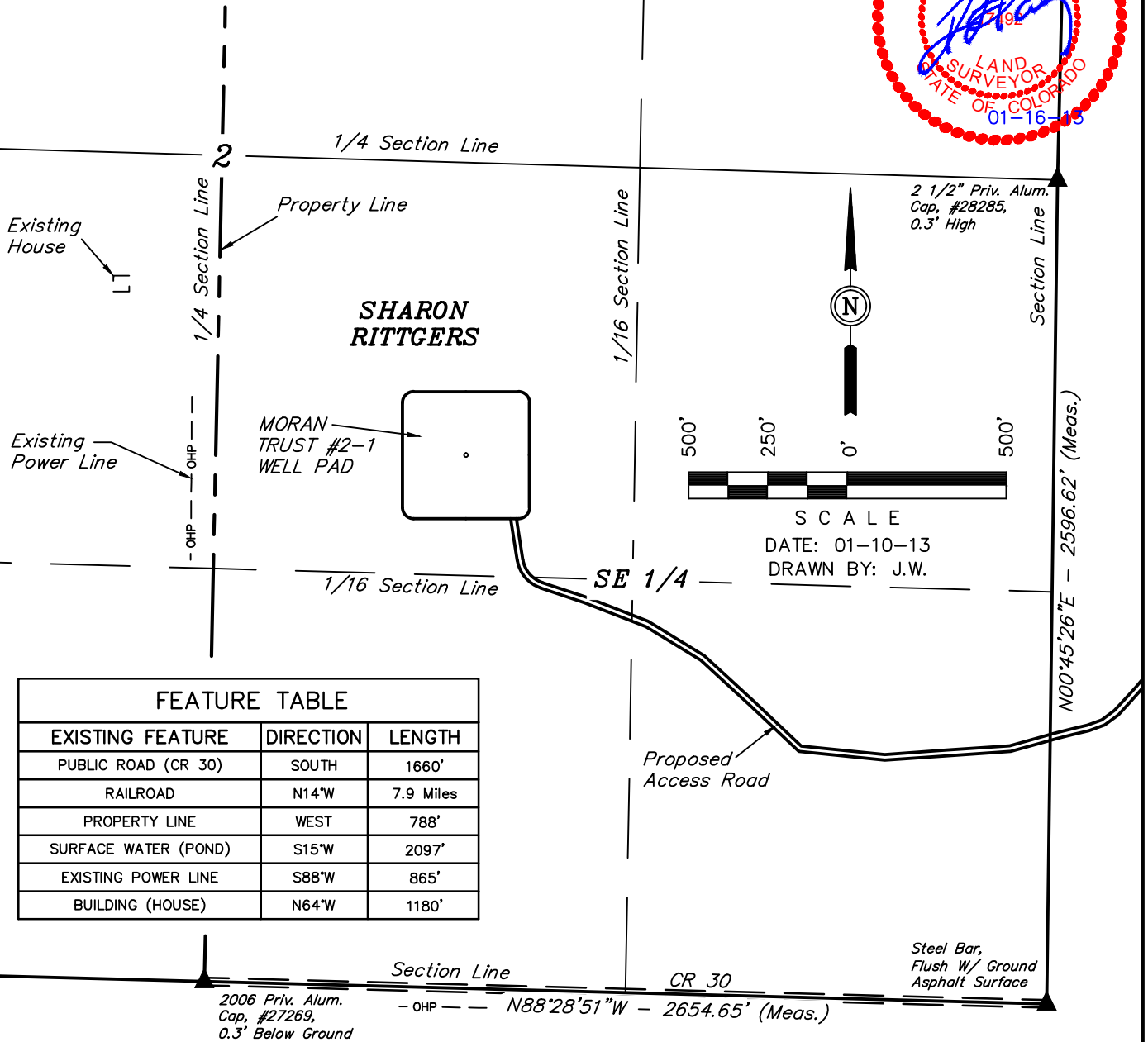


ConocoPhillips Company

LOCATION DRAWING FOR

MORAN TRUST #2-1
SECTION 2, T5S, R64W, 6th P.M.
1680' FSL 1853' FEL

FIGURE #4



FEATURE TABLE

EXISTING FEATURE	DIRECTION	LENGTH
PUBLIC ROAD (CR 30)	SOUTH	1660'
RAILROAD	N14°W	7.9 Miles
PROPERTY LINE	WEST	788'
SURFACE WATER (POND)	S15°W	2097'
EXISTING POWER LINE	S88°W	865'
BUILDING (HOUSE)	N64°W	1180'

PLANT COMMUNITY

- ☐ DISTURBED GRASSLAND
- ☐ NATIVE GRASSLAND
- ☐ SHRUB LAND
- ☐ PLAINS RIPARIAN
- ☐ MOUNTAIN RIPARIAN
- ☐ FOREST LAND
- ☐ WETLANDS AQUATIC
- ☐ ALPINE
- ☐ OTHER (Describe): _____

CURRENT LAND USE

- CROP LAND: ☐ IRRIGATED ☐ DRY LAND ☐ IMPROVED PASTURE ☐ HAY MEADOW ☐ CRP
- NON-CROP LAND: ☐ RANGELAND ☐ TIMBER ☐ RECREATIONAL ☐ OTHER (Describe) _____
- SUBDIVIDED: ☐ INDUSTRIAL ☐ COMMERCIAL ☐ RESIDENTIAL

FUTURE LAND USE

- CROP LAND: ☐ IRRIGATED ☐ DRY LAND ☐ IMPROVED PASTURE ☐ HAY MEADOW ☐ CRP
- NON-CROP LAND: ☐ RANGELAND ☐ TIMBER ☐ RECREATIONAL ☐ OTHER (Describe) _____
- SUBDIVIDED: ☐ INDUSTRIAL ☐ COMMERCIAL ☐ RESIDENTIAL

ConocoPhillips Company

LOCATION DRAWING DETAIL FOR

MORAN TRUST #2-1
SECTION 2, T5S, R64W, 6th P.M.
1680' FSL 1853' FEL

FIGURE #4A

SCALE: 1" = 200'
DATE: 01-10-13
DRAWN BY: J.W.
REVISED: 01-30-13



400' Offset
from Edge of
Disturbance

400'

Topsoil
Stockpile

Spills
Stockpile

PROPOSED
MORAN TRUST #2-1
(NAD 83)
Lat: 39.641706°
Long: 104.516628°

400'

400'

400'

Proposed
Access Road