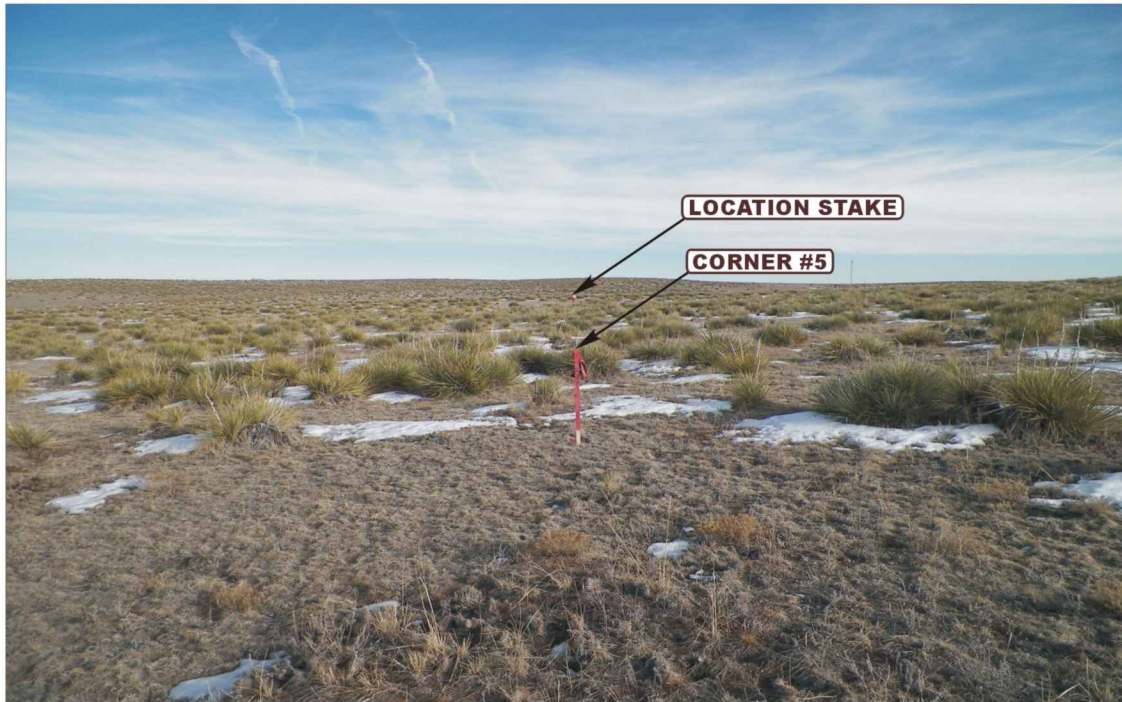


**ConocoPhillips Company**  
**MORAN TRUST #2-1**  
 LOCATED IN ARAPAHOE COUNTY, COLORADO  
 SECTION 2, T5S, R64W, 6th P.M.



**PHOTO: VIEW FROM CORNER #5 TO LOCATION STAKE**

**CAMERA ANGLE: EASTERLY**



**PHOTO: VIEW FROM BEGINNING OF PROPOSED ACCESS**

**CAMERA ANGLE: WESTERLY**



- Since 1964 -

**U&LS** Uintah Engineering & Land Surveying  
 85 South 200 East Vernal, Utah 84078  
 (435) 789-1017 \* FAX (435) 789-1813

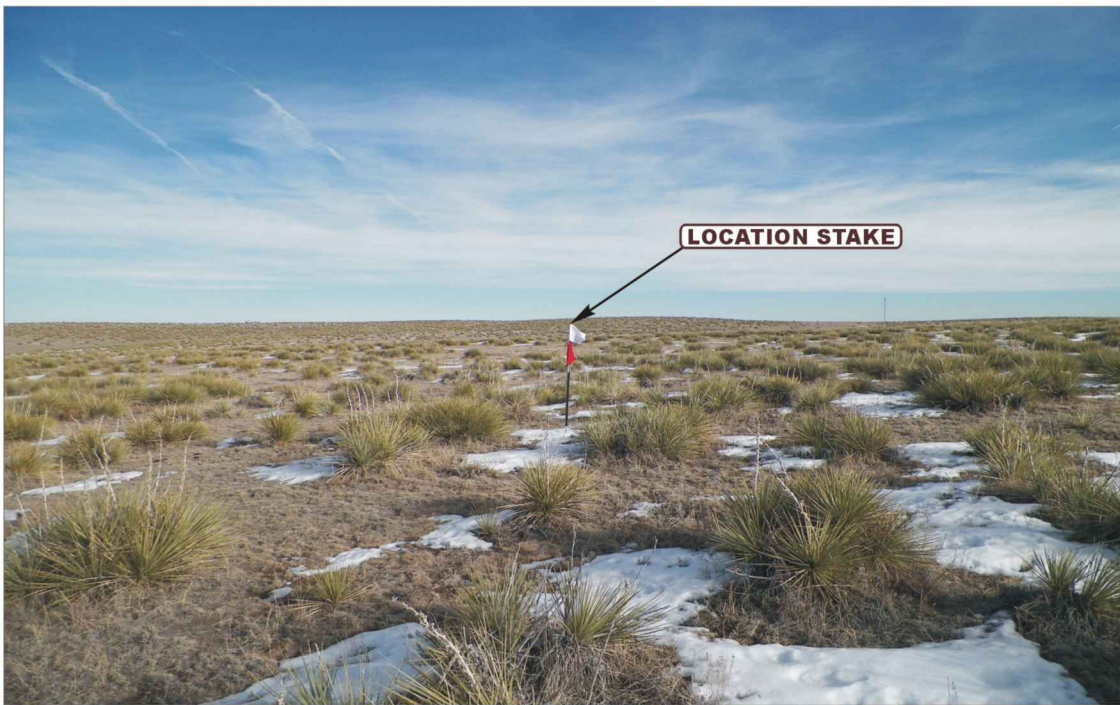
<b>LOCATION PHOTOS</b>	<b>01</b> MONTH	<b>14</b> DAY	<b>13</b> YEAR	<b>PHOTO</b>
<b>TAKEN BY: D.L.S.</b>	<b>DRAWN BY: J.L.H.</b>	<b>REVISED: 00-00-00</b>	<b>P1</b>	

**ConocoPhillips Company**  
**MORAN TRUST #2-1**  
 LOCATED IN ARAPAHOE COUNTY, COLORADO  
 SECTION 2, T5S, R64W, 6th P.M.



**PHOTO: VIEW OF LOCATION STAKE**

**CAMERA ANGLE: NORTHERLY**



**PHOTO: VIEW OF LOCATION STAKE**

**CAMERA ANGLE: EASTERLY**

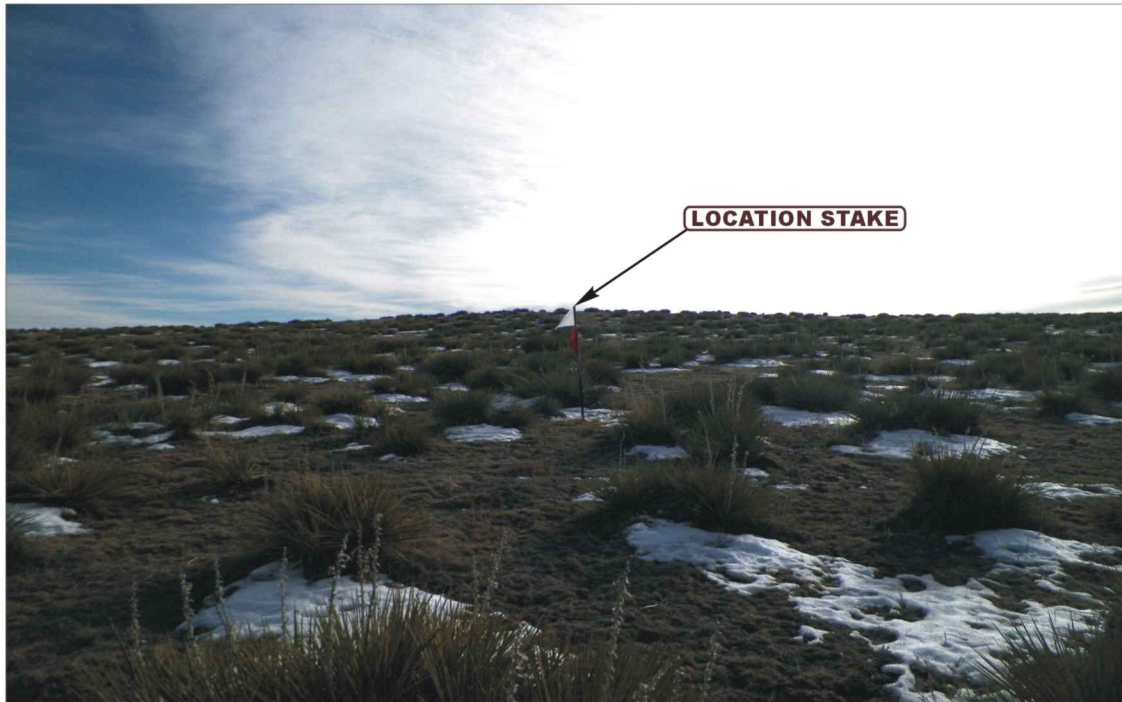


- Since 1964 -

**UELS** Uintah Engineering & Land Surveying  
 85 South 200 East Vernal, Utah 84078  
 (435) 789-1017 \* FAX (435) 789-1813

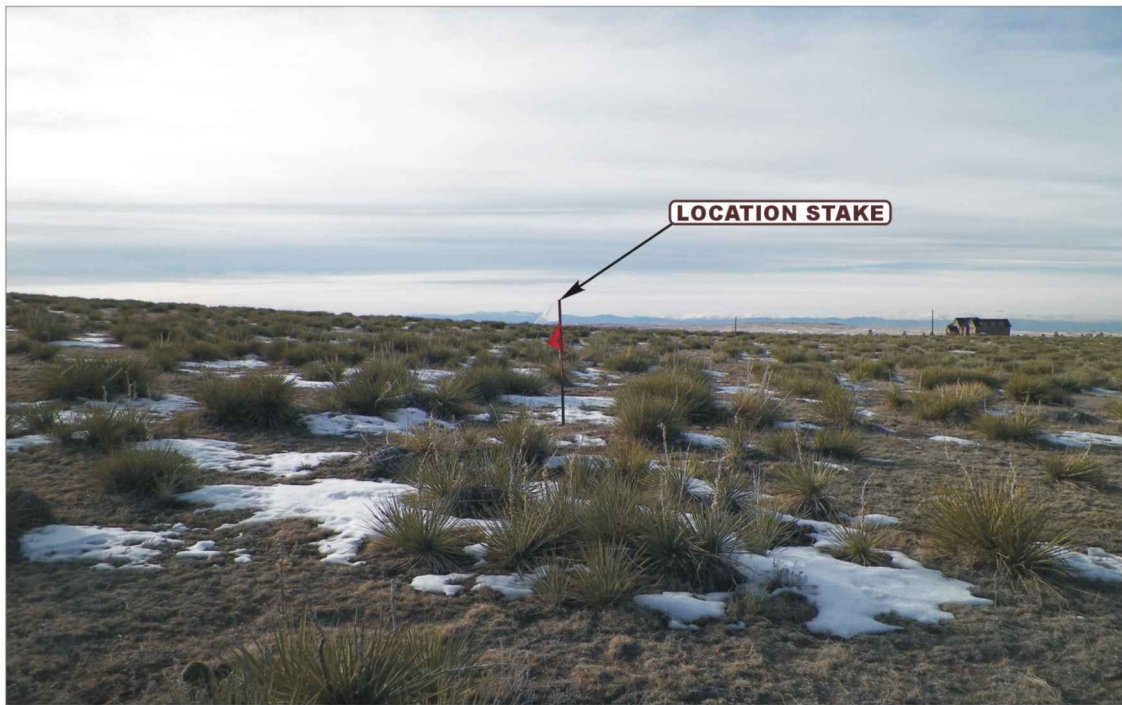
<b>LOCATION PHOTOS</b>	<b>01</b>	<b>14</b>	<b>13</b>	<b>PHOTO P2</b>
	MONTH	DAY	YEAR	
TAKEN BY: D.L.S.		DRAWN BY: J.L.H.		REVISED: 00-00-00

**ConocoPhillips Company**  
**MORAN TRUST #2-1**  
 LOCATED IN ARAPAHOE COUNTY, COLORADO  
 SECTION 2, T5S, R64W, 6th P.M.



**PHOTO: VIEW OF LOCATION STAKE**

**CAMERA ANGLE: SOUTHERLY**



**PHOTO: VIEW OF LOCATION STAKE**

**CAMERA ANGLE: WESTERLY**



- Since 1964 -

**U**  
**E**  
**L**  
**S** Uintah Engineering & Land Surveying  
 85 South 200 East Vernal, Utah 84078  
 (435) 789-1017 \* FAX (435) 789-1813

<b>LOCATION PHOTOS</b>	<b>01</b>	<b>14</b>	<b>13</b>	<b>PHOTO</b> <b>P3</b>
	MONTH	DAY	YEAR	
TAKEN BY: D.L.S.	DRAWN BY: J.L.H.	REVISED: 00-00-00		