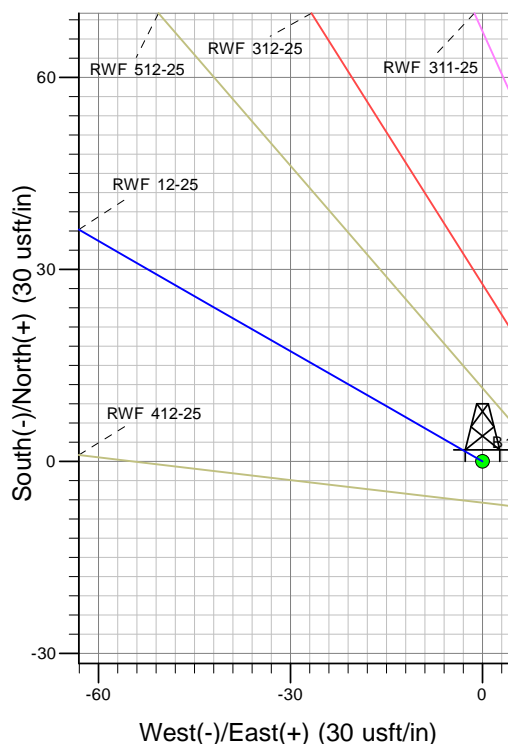
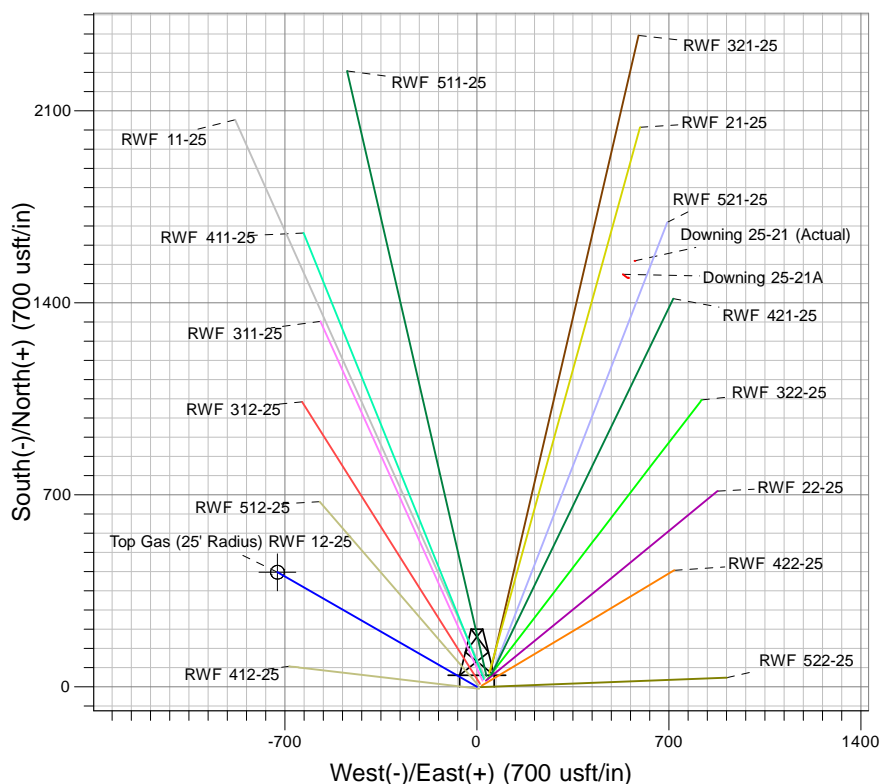
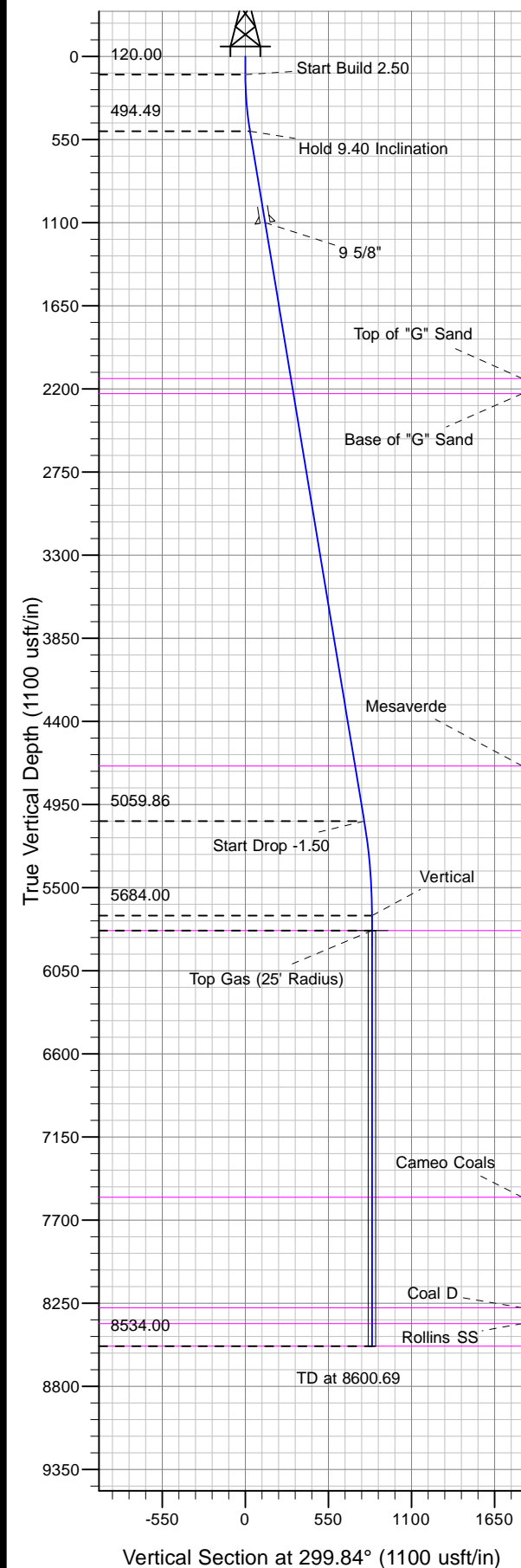




Well Name: RWF 12-25  
Surface Location: RWF 22-25 Pad  
North American Datum 1983 , US State Plane 1983, Colorado Central Zone  
Ground Elevation: 6038.00

+N/-S	+E/-W	Northing	Easting	Latitude	Longitude	Slot
0.00	0.00	1614411.00	2339410.00	39.49697	-107.84114	B1

KELLY BUSHING @ 6064.00usft (Nabors 577)



Project: RU 25-06S-094W  
Site: RWF 22-25 Pad  
Well: RWF 12-25  
Design #2 01Feb13 kjs



Azimuths to True North  
Magnetic North: 10.09°  
Magnetic Field  
Strength: 52121.6snT  
Dip Angle: 65.73°  
Date: 12/4/2012  
Model: IGRF2010

#### ANNOTATIONS

MD	Inc	Azi	TVD	+N/-S	+E/-W	Vsect	Departure	Annotation
120.00	0.00	0.00	120.00	0.00	0.00	0.00	0.00	Start Build 2.50
496.17	9.40	299.84	494.49	15.33	-26.72	30.80	30.80	Hold 9.40 Inclination
5123.74	9.40	299.84	5059.86	391.57	-682.61	786.95	786.95	Start Drop -1.50
5750.69	0.00	0.00	5684.00	417.12	-727.14	838.29	838.29	Vertical
5850.69	0.00	0.00	5784.00	417.12	-727.14	838.29	838.29	Top Gas
8600.69	0.00	0.00	8534.00	417.12	-727.14	838.29	838.29	TD at 8600.69