



Weatherford®

6 3/4 in. & 4 3/4 in. WeatherfordLLWD™
Gamma Ray & Resistivity
1 in. & 5 in. TRUE VERTICAL DEPTH
RECORDED DATA
FINAL PRINT

Company: Anadarko
 Well: Haymaker 29N-9HZ
 Field: Wattenberg
 Rig: H & P 307
 County: Weld

COMPANY Anadarko
WELL Haymaker 29N-9HZ
FIELD Wattenberg
RIG H & P 307
COUNTY Weld **STATE** Colorado
API # 05-123-35660-0000

Location
 Latitude: 40.147054° N X = 3,230,041.05 ft Mag Decl: 8.56°
 Longitude: 104.677089° W Y = 1,297,482.60 ft Mag Dip: 66.93°
 Other Services: Temperature and Directional

Permanent Datum: Mean Sea Level
 Log Measured From: Drill Floor Elev: 4922 ft above perm. datum
 Depth Reference: Drillers Tally Total Depth: 11591 ft
 Depth Logged: 6688 ft to 11591 ft Runs: 5
 Date Logged: 13-Nov-12 to 20-Nov-12 Spud Date: 13-Oct-12

Borehole Record		Casing Record		Elevation		
Hole Size	From	To	Size	Weight	From	To
8.750 in.	911 ft	7486 ft	9.625 in.	53.5 lb/ft	Surface	911 ft
6.125 in.	7486 ft	11591 ft	7.000 in.	26.0 lb/ft	Surface	7486 ft

Borehole Deviation Record		Mud Record				
Hole Size	Min. Inc.	Max. Inc.	Type	Weight	From	To
8.750 in.	0.69°	88.11°	WBM	8.40 - 8.60 ppg	1125 ft	6673 ft
6.125 in.	87.66°	92.83°	WBM	8.60 - 10.25 ppg	6673 ft	7658 ft
			WBM	8.60 - 10.30 ppg	7658 ft	11591 ft

All interpretations of log data are opinions based on inferences from electrical or other measurements. Weatherford International does not guarantee the accuracy or correctness of any interpretation or recommendation and we shall not be liable or responsible for any loss, cost, damages or expenses incurred or sustained by anyone resulting from any interpretation or recommendation made by any of our employees or agents.

RUN SUMMARY

M/LWD Run Number		2	3	4	5			
Bit Size	in.	8.750	6.125	6.125	6.125			
Bit Type		PDC	PDC	PDC	PDC			
Bit TFA	sq.in.	0.650	0.648	0.648	0.648			
Bit Start Depth	ft	6688	7462	9590	11178			
Bit End Depth	ft	7462	9590	11178	11591			
Top Log Interval	ft	6630	7387	9515	11103			
Bottom Log Interval	ft	7462	9590	11178	11591			
Begin Log Time	hrs	20:59	22:12	9:51	19:58			
Begin Log Date	DD-MMM-YY	13-Nov-12	16-Nov-12	18-Nov-12	19-Nov-12			
End Log Time	hrs	21:14	15:38	3:06	0:28			
End Log Date	DD-MMM-YY	14-Nov-12	17-Nov-12	19-Nov-12	20-Nov-12			
Drill or Wipe		Drill	Drill	Drill	Drill			
Flow Rate	gal/min	615	275	296	297.5			
Max AV / CV @ MWD	ft/min	486 / 166	451 / 317	488 / 317	488 / 266			
Min Inc @ Depth	deg @ ft	0.69 @ 1043	0.44 @ 6635	89.38 @ 9726	89.47 @ 11339			
Max Inc @ Depth	deg @ ft	88.11 @ 7428	87.72 @ 9252	92.53 @ 11055	92.83 @ 11149			
MUD DATA								
Depth	ft	6688	7462	9590	11591			
Fluid Type		WBM	WBM	WBM	WBM			
Mud Weight	ppg	10.00	10.10	9.90	10.00			
Plastic Viscosity	cP	12	11	11	9			
Solids / Sand	%	8.0 / 0.25	7.4 / 0.25	7.4 / 0.25	8.0 / .30			
Total Chlorides	ppm	1100	1500	1500	1700			
pH		6	10	10	8.7			
Oil:Water Ratio	% Vol	89.0:11.0	89.0:11.0	89.0:11.0	89.0 : 11.0			
Rm @ Temperature	ohm-m @ deg F	N/A	0.78 @ 70	0.78 @ 70	0.78 @ 70			
Rmc @ Temperature	ohm-m @ deg F	N/A	1.96 @ 70	1.96 @ 70	1.96 @ 70			
Rmf @ Temperature	ohm-m @ deg F	N/A	1.95 @ 70	1.95 @ 70	1.95 @ 70			
KCl	% Vol	0	0	0	0			
Client Representative		D. Barone	D. Barone	D. Barone	D. Barone			
WeatherfordM/LWD Engineer		R. Komrs	P. Hashman	P. Hashman	P. Hashman			

EQUIPMENT SUMMARY

M/LWD Run Number	2	3	4	5	
MWD Build Number	CP20001PDRBY-02	N/A	N/A	N/A	
HEL Serial Number	N/A	NW22044PDBB4.75	NW22040PDBB4.75-M4	NW22040PDBB4.75-M4	
MFR Serial Number	N/A	NW22045RBK4.75-M2	NW22045RBK4.75-M2	NW22045RBK4.75-M2	
IDS Serial Number	N/A	NW22544BI4.75	NW22544BI4.75	NW22544BI4.75	
SAGR Serial Number	N/A	NW22546JB4.75	NW22546JB4.75	NW22546JB4.75	
Sensor to Bit Offsets / Acquisition Rates					
Directional	ft / sec	57.88 / RT	53.69 / RT	53.69 / RT	53.81 / RT
Gamma Ray	ft / sec	43.67 / RT	39.12 / 5	39.12 / 5	39.28 / 5
Resistivity	ft / sec	N/A	74.80 / 5	74.80 / 5	74.96 / 5
Other Information					
Total BHA Length	ft	1470.63	5696.39	5696.39	5696.39
BHA Assembly Type		Steerable	Steerable	Steerable	Steerable
Stabilizer Location	ft	N/A	34.20	34.20	34.20
Run Circulating Time	hr	31.49	22.53	21.53	15.34
Run Drilling Time	hr	15.87	10.24	10.39	2.43

MUD SUMMARY

Date and Time	Run	Bit Depth	Mud Weight	% K	Rm @ Temp	Rmf @ Temp	Rmc @ Temp	BHCT
13 Nov 12 @ 20:59	02	6688 ft	10.00 ppg	0	N/A	N/A	N/A	166 F
16 Nov 12 @ 22:12	03	7462 ft	10.10 ppg	0	0.78 @ 70	1.95 @ 70	1.96 @ 70	210 F
17 Nov 12 @ 09:51	04	9590 ft	9.90 ppg	0	1.96 @ 70	1.95 @ 70	1.96 @ 70	213 F
19 Nov 12 @ 13:00	05	11178 ft	9.90 ppg	0	1.96 @ 70	1.95 @ 70	1.96 @ 70	232 F

M/LWD RUN REMARKS

Run Number: 2 :: REAL TIME DATA LOG

WFT Services Provided:

Real Time Logging: Gamma Ray and Temperature.

Directional Services: On demand Inclination and Azimuth.

Borehole and Environmental Correction:

Collar O.D.: 6.750 in.

Gamma Ray: Collar O.D., collar I.D. and K1 factor.

Collar I.D.: 3.250 in.

K1 Factor: 3.975

KCl Concentration: 0%

Run Number: 3 :: RECORDED DATA LOG

WFT Services Provided:

Recorded and Real Time Logging: Gamma Ray, Deep, Medium and Shallow Resistivity, and Temperature.

Directional Services: On demand Inclination and Azimuth.

Borehole and Environmental Correction:

Hole Size: 6.125 in.

Gamma Ray: Corrected for mud weight, hole size and KCl concentration.

Mud Weight: 10.10 ppg

Resistivities: Corrected for borehole temperature, hole size, drilling fluid resistivity and dielectric correction.

Borehole Temperature: 172° F

Drilling Fluid Resistivity: 0.918 ohm-m

KCl Concentration: 0%

Run Number: 4 :: RECORDED DATA LOG

WFT Services Provided:

Recorded and Real Time Logging: Gamma Ray, Deep, Medium and Shallow Resistivity, and Temperature.

Directional Services: On demand Inclination and Azimuth.

Borehole and Environmental Correction:

Hole Size: 6.125 in.

Gamma Ray: Corrected for mud weight, hole size and KCl concentration.

Mud Weight: 9.90 ppg

Resistivities: Corrected for borehole temperature, hole size, drilling fluid resistivity and dielectric correction.

Borehole Temperature: 210° F

Drilling Fluid Resistivity: 0.780 ohm-m

KCl Concentration: 0%

Run Number: 5 :: RECORDED DATA LOG

WFT Services Provided:

Recorded and Real Time Logging: Gamma Ray, Deep, Medium and Shallow Resistivity, and Temperature.

Directional Services: On demand Inclination and Azimuth.

Borehole and Environmental Correction:

Hole Size: 6.125 in.

Gamma Ray: Corrected for mud weight, hole size and KCl concentration.

Mud Weight: 9.90 ppg

Resistivities: Corrected for borehole temperature, hole size, drilling fluid resistivity and dielectric correction.

Borehole Temperature: 210° F

Drilling Fluid Resistivity: 0.780 ohm-m

KCl Concentration: 0%

M/LWD LOG COMMENTS

Comment No. 2-1

REAL TIME DATA LOG

Start of MWD Drilling Run 02

Weatherford International provided 6 3/4 in. Directional, Gamma Ray and Temperature for Run 02.

Run 02 started formation drilling November 13, 2012 at 20:59 at 6688 MD / 6600 TVD. Weatherford International logged the 8.750 in. borehole.

The WBM at the start of drilling was 10.10 ppg.

Comment No. 2-2

End of MWD Drilling Run 02

Run 02 ended drilling formation November 14, 2012 at 21:14 at 7462 MD / 7004 TVD.

The WBM at the end of drilling was 10.10 ppg.

Comment No. 3-1

RECORDED DATA LOG

Start of LWD Drilling Run 03

Weatherford International provided 4 3/4 in. Directional, Resistivity, Gamma Ray, and Temperature for Run 03.

Run 03 started formation drilling November 16, 2012 at 22:12 at 7462 MD / 7004 TVD. Weatherford International logged the 6.125 in. borehole.

The WBM at the start of drilling was 10.10 ppg.

Comment No. 3-2

End of LWD Drilling Run 02

Run 02 ended drilling formation November 17, 2012 at 15:38 at 9590 MD / 7022 TVD.

The WBM at the end of drilling was 9.90 ppg.

Comment No. 4-1

RECORDED DATA LOG

Start of LWD Drilling Run 04

Weatherford International provided 4 3/4 in. Directional, Resistivity, Gamma Ray, and Temperature for Run 04.

Run 04 started formation drilling November 18, 2012 at 09:51 at 9590 MD / 7022 TVD. Weatherford International logged the 6.125 in. borehole.

The WBM at the start of drilling was 9.90 ppg.

Comment No. 4-2

End of LWD Drilling Run 04

Run 04 ended drilling formation November 19, 2012 at 03:06 at 11178 MD / 7027 TVD.

The WBM at the end of drilling was 10.10 ppg.

Comment No. 5-1

RECORDED DATA LOG

Start of LWD Drilling Run 05

Weatherford International provided 4 3/4 in. Directional, Resistivity, Gamma Ray, and Temperature for Run 05.

Run 05 started formation drilling November 19, 2012 at 19:58 at 11178 MD / 7027 TVD. Weatherford International logged the 6.125 in. borehole.

The WBM at the start of drilling was 9.90 ppg.

Comment No. 5-2

End of LWD Drilling Run 05

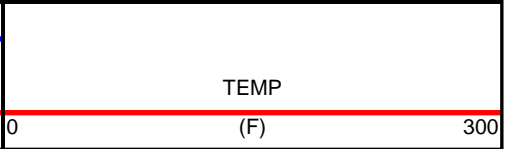
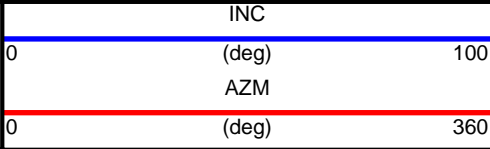
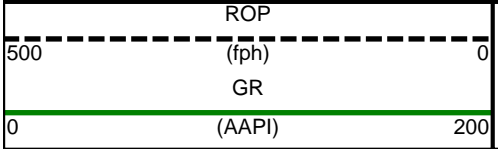
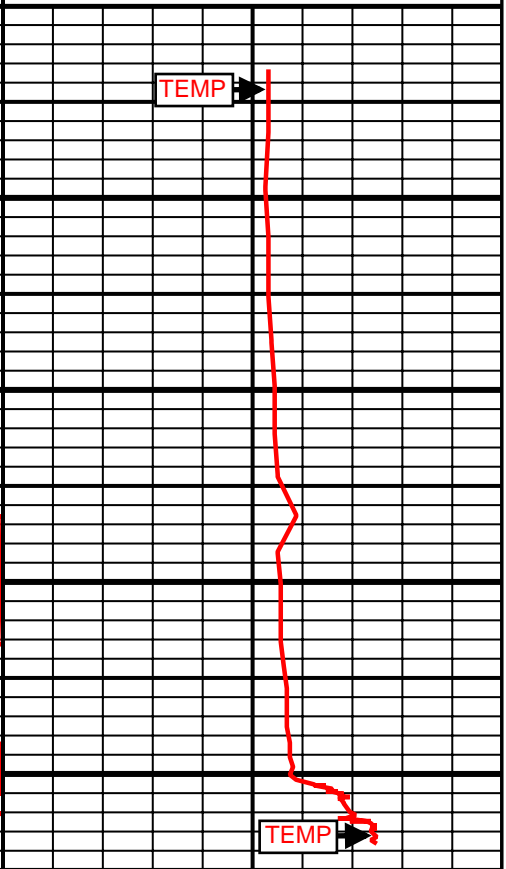
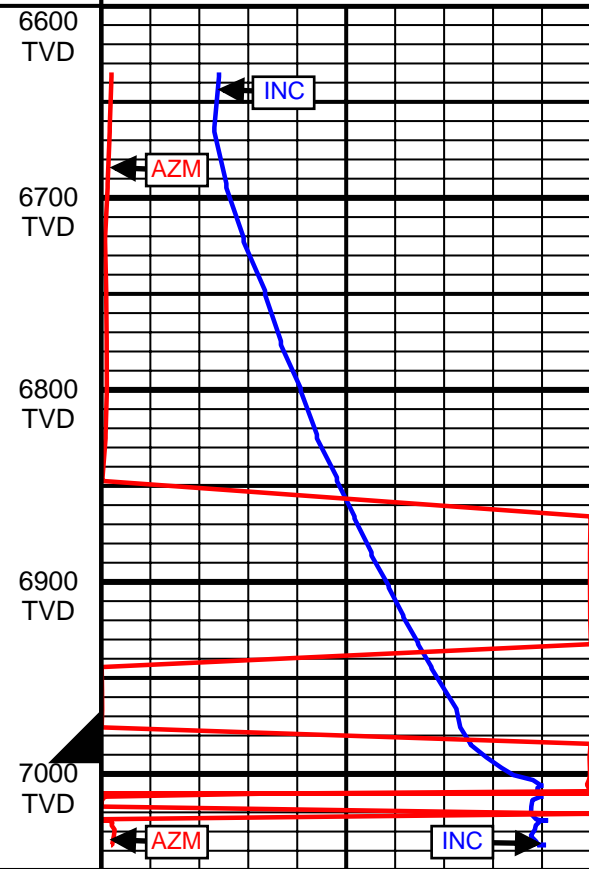
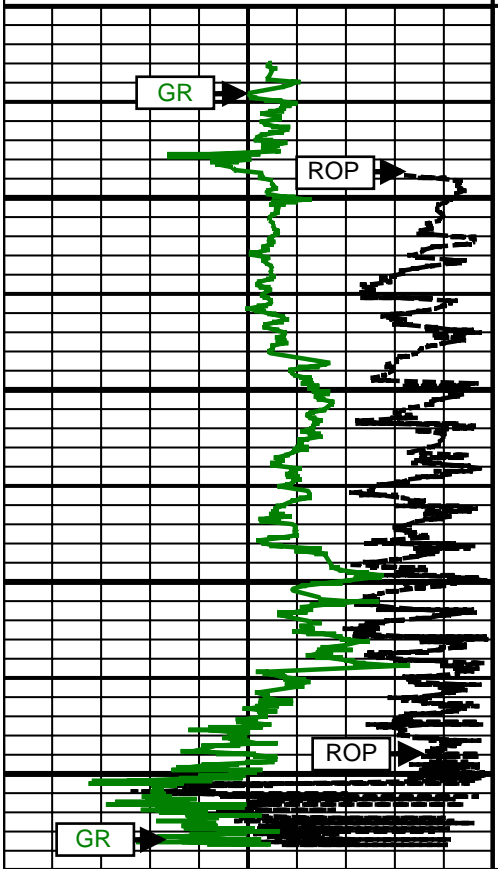
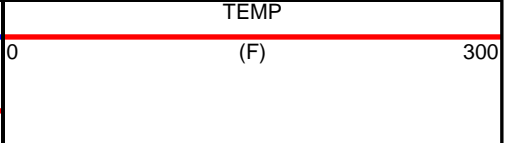
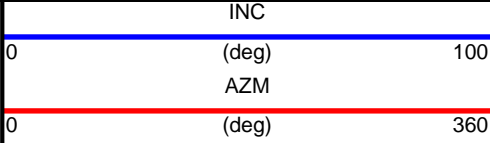
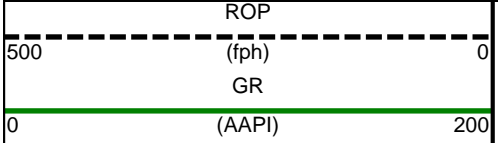
Run 05 ended drilling formation November 20, 2012 at 00:28 at 11590 MD / 7037 TVD.

The WBM at the end of drilling was 10.10 ppg.

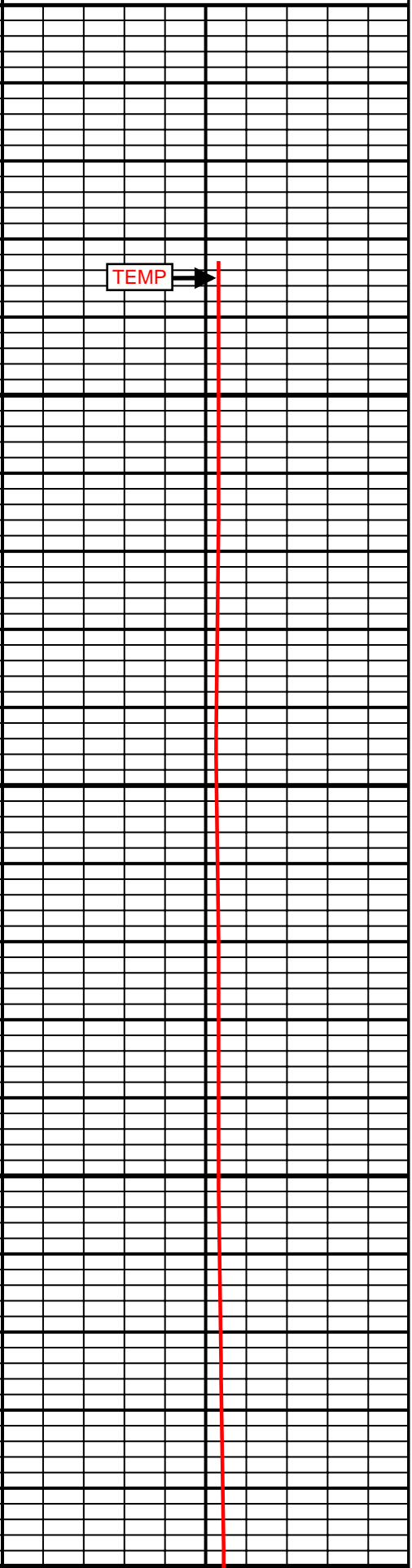
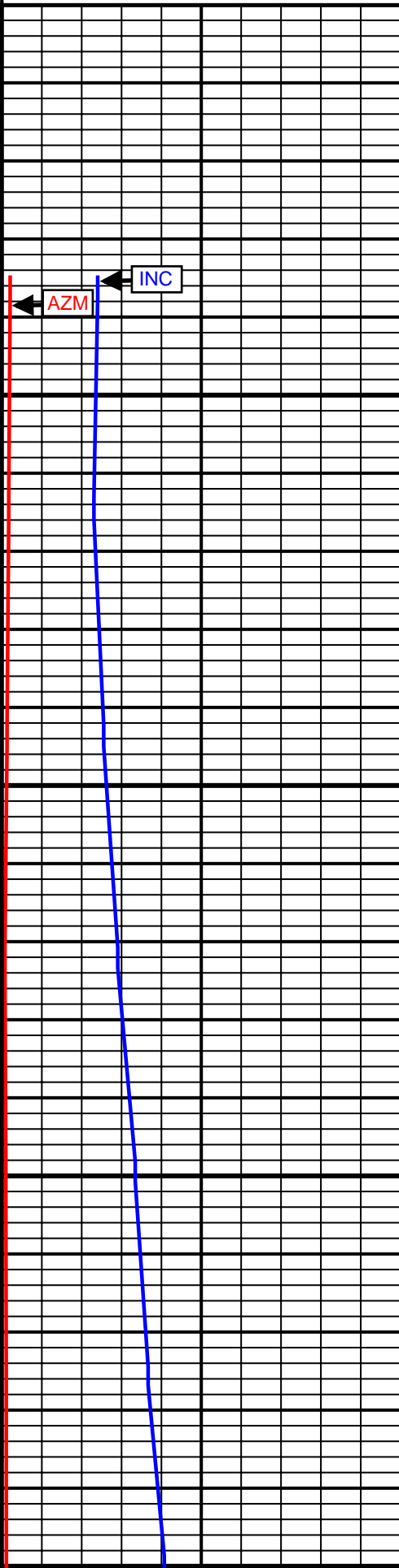
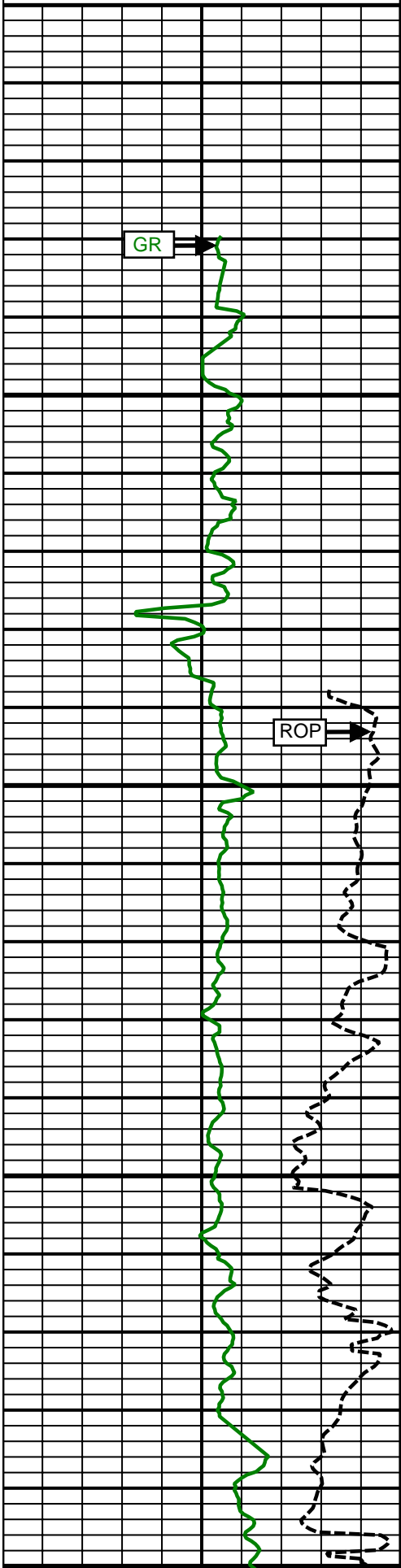
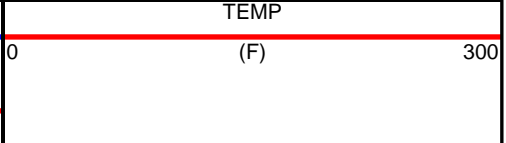
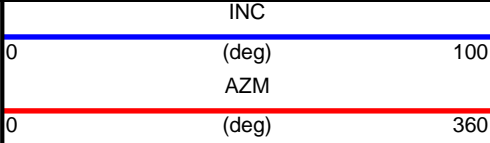
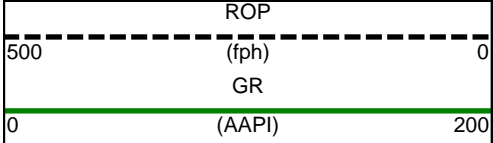
CURVE SPECIFICATIONS

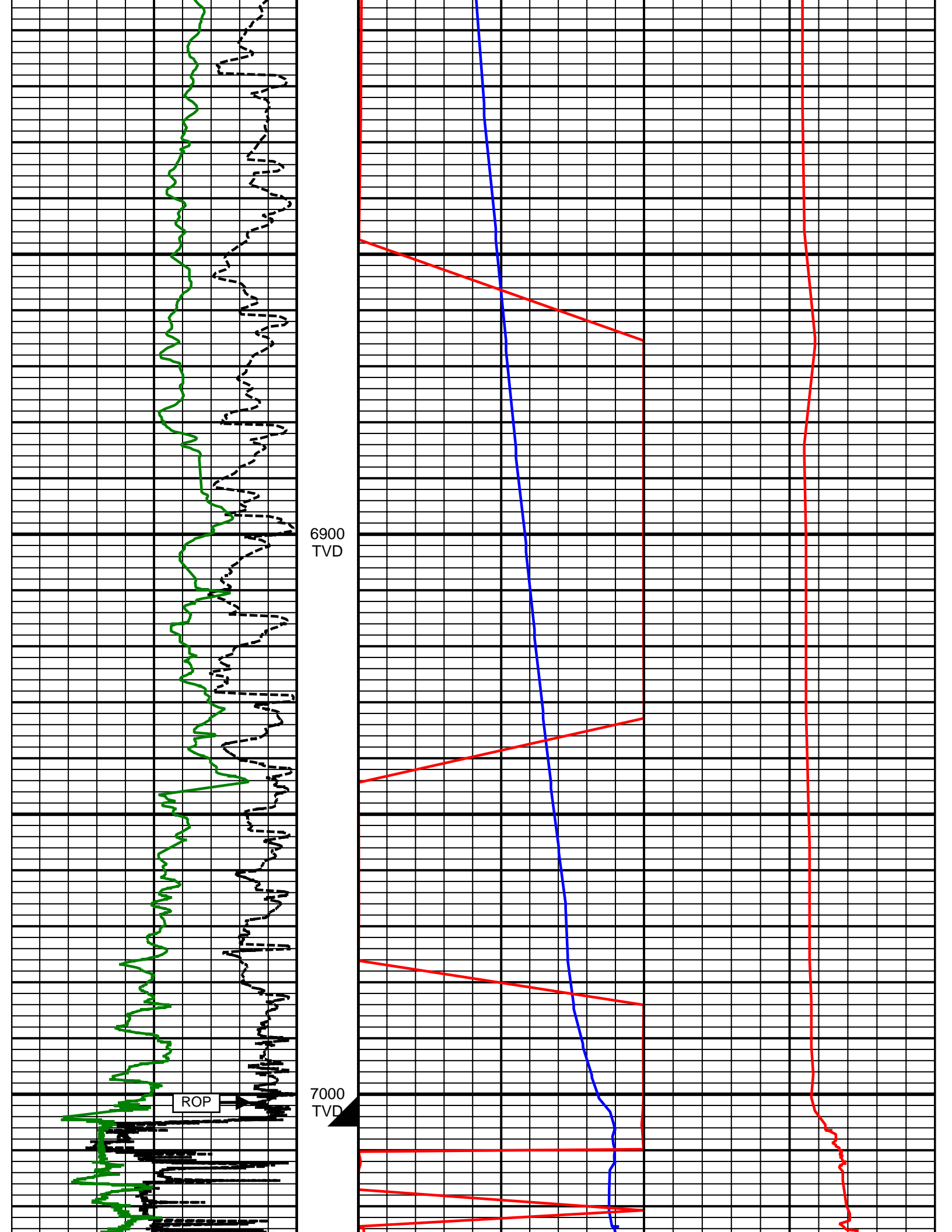
CURVE TYPE	MNEMONIC	UNITS	COMMENTS	CORRECTIONS
Rate of Penetration	ROP	fph	Rate of Penetration 3.0 ft window 0.5 ft Exponential Smoothing	None
Gamma Ray	GR	AAPI	Gamma Ray 3.0 ft window 0.5 ft Exponential Smoothing	See M/LWD Run Remarks
Inclination	INC	deg	Survey Inclination No Smoothing	None
Azimuth	AZM	deg	Survey Azimuth No Smoothing	
Temperature	TEMP	F	Temperature 3.0 ft window 0.5 ft Exponential Smoothing	

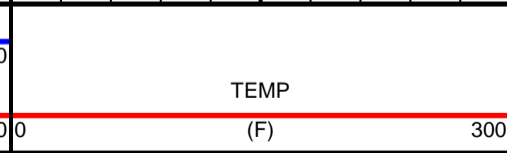
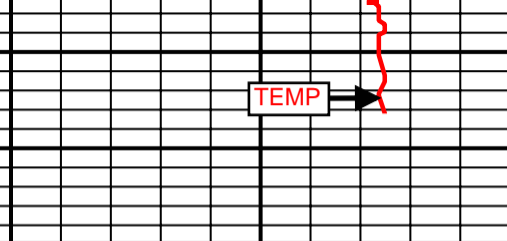
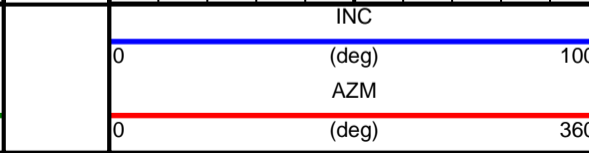
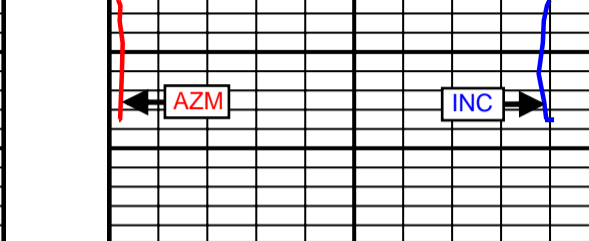
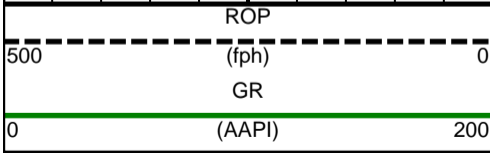
1 Inch - True Vertical Depth



5 Inch - True Vertical Depth







SURVEY

Survey Calculation Method: **Minimum Curvature**

Magnetic Reference	Target Direction	Total Magnetic Field	Magnetic Dip Angle	Magnetic Declination	Grid Convergence	Total Correction
True North	12.73 deg	52930 nT	66.93 deg	8.56 deg	0.00 deg	8.56 deg
Survey Tie-On	Depth	INC	AZ	TVD	NS	EW
	911.00 ft	0.76 deg	280.76 deg	910.97 ft	-2.51 ft	-4.51 ft

Depth (ft)	Inc (deg)	Azm (deg)	TVD (ft)	Well Head		VSect (ft)	Dogleg (deg/100ft)
				NS (ft)	EW (ft)		
1043.00	0.69	331.34	1042.96	-1.65	-5.75	-2.88	0.47
1134.00	1.51	103.61	1133.95	-1.45	-4.85	-2.48	2.24
1228.00	3.88	113.08	1227.84	-2.99	-0.72	-3.07	2.56
1320.00	5.87	105.79	1319.50	-5.49	6.67	-3.88	2.26
1412.00	7.84	116.93	1410.85	-9.61	16.80	-5.67	2.57
1507.00	9.79	113.36	1504.72	-15.75	29.99	-8.75	2.13
1602.00	11.02	110.53	1598.16	-22.14	45.91	-11.48	1.40
1696.00	10.99	110.36	1690.43	-28.40	62.72	-13.89	0.05
1791.00	10.30	107.33	1783.79	-34.09	79.32	-15.77	0.93
1886.00	9.43	104.96	1877.39	-38.62	94.94	-16.75	1.01
1981.00	10.15	107.90	1971.00	-43.21	110.43	-17.81	0.92
2075.00	10.76	111.02	2063.44	-48.90	126.50	-19.82	0.89
2170.00	11.72	107.99	2156.62	-55.06	143.96	-21.99	1.19
2265.00	9.77	107.01	2249.95	-60.40	160.84	-23.47	2.06
2359.00	10.43	108.37	2342.50	-65.41	176.55	-24.90	0.75
2454.00	12.18	114.62	2435.65	-72.30	193.82	-27.81	2.25
2549.00	9.99	113.17	2528.87	-79.72	210.51	-31.37	2.32
2644.00	10.13	119.77	2622.42	-87.11	225.34	-35.31	1.22
2738.00	11.80	120.73	2714.70	-96.12	240.77	-40.71	1.79
2834.00	9.51	118.97	2809.04	-104.98	256.15	-45.96	2.41
2929.00	11.44	118.81	2902.45	-113.32	271.27	-50.76	2.03
3024.00	11.44	116.37	2995.56	-122.05	287.97	-55.59	0.51
3119.00	12.47	118.31	3088.50	-131.10	305.44	-60.57	1.16
3214.00	10.38	117.62	3181.61	-139.93	322.06	-65.52	2.20
3309.00	10.18	121.34	3275.09	-148.27	336.81	-70.40	0.73
3405.00	11.45	122.26	3369.38	-157.76	352.11	-76.30	1.34
3499.00	10.83	120.25	3461.61	-167.19	367.63	-82.07	0.78
3594.00	11.54	116.54	3554.81	-175.94	383.84	-87.03	1.06
3689.00	12.68	115.60	3647.69	-184.69	401.75	-91.62	1.22
3784.00	9.77	112.93	3740.86	-192.33	418.58	-95.37	3.11
3879.00	10.95	116.20	3834.31	-199.46	434.10	-98.90	1.39
3973.00	13.07	113.26	3926.25	-207.60	451.88	-102.92	2.35
4068.00	11.95	114.01	4019.00	-215.84	470.73	-106.81	1.19
4163.00	11.69	114.26	4111.98	-223.80	488.49	-110.66	0.28
4258.00	10.48	112.01	4205.21	-230.99	505.27	-113.97	1.35
4353.00	12.12	102.57	4298.37	-236.40	523.02	-115.34	2.60
4448.00	11.50	100.17	4391.36	-240.24	542.08	-114.89	0.83
4542.00	9.89	96.37	4483.73	-242.79	559.32	-113.58	1.87
4638.00	10.48	101.68	4578.21	-245.48	576.07	-112.50	1.15
4733.00	9.77	98.94	4671.73	-248.48	592.49	-111.81	0.90
4828.00	11.25	106.79	4765.14	-252.41	609.33	-111.93	2.16
4923.00	12.08	117.92	4858.19	-259.74	626.99	-115.20	2.52

5018.00	10.75	112.38	4951.31	-267.77	643.96	-119.29	1.81
5114.00	11.07	112.66	5045.58	-274.73	660.75	-122.38	0.34
5209.00	10.62	118.08	5138.88	-282.36	676.89	-126.27	1.17
5304.00	10.98	120.27	5232.20	-291.04	692.42	-131.31	0.57
5399.00	8.23	116.77	5325.86	-298.67	706.31	-135.69	2.96
5494.00	8.70	115.68	5419.83	-304.85	718.86	-138.95	0.52
5589.00	7.43	124.68	5513.89	-311.45	730.38	-142.85	1.88
5683.00	8.13	121.49	5607.02	-318.38	741.05	-147.26	0.87
5778.00	9.46	115.24	5700.91	-325.22	753.84	-151.11	1.72
5873.00	9.40	108.19	5794.63	-330.97	768.27	-153.54	1.22
5967.00	9.73	101.14	5887.32	-334.91	783.36	-154.05	1.29
6062.00	6.88	94.47	5981.32	-336.90	796.91	-153.01	3.16
6157.00	6.96	94.39	6075.63	-337.78	808.32	-151.36	0.08
6252.00	5.57	93.27	6170.06	-338.49	818.67	-149.77	1.47
6347.00	4.30	95.47	6264.70	-339.09	826.82	-148.56	1.35
6442.00	2.03	89.57	6359.55	-339.42	832.04	-147.73	2.41
6453.00	1.78	84.31	6370.55	-339.40	832.41	-147.63	2.77
6473.00	1.68	88.05	6390.54	-339.36	833.01	-147.46	0.75
6505.00	1.97	42.12	6422.52	-338.93	833.85	-146.86	4.53
6537.00	5.45	13.06	6454.45	-337.04	834.56	-144.86	12.03
6569.00	9.79	2.37	6486.16	-332.84	835.02	-140.66	14.21
6600.00	13.52	358.52	6516.52	-326.59	835.03	-134.55	12.28
6632.00	16.12	357.90	6547.45	-318.41	834.77	-126.63	8.14
6663.00	19.57	2.93	6576.96	-308.92	834.88	-117.35	12.18
6695.00	23.35	6.40	6606.74	-297.26	835.86	-105.76	12.46
6727.00	24.01	7.31	6636.04	-284.50	837.40	-92.98	2.36
6758.00	23.07	6.03	6664.46	-272.20	838.84	-80.67	3.45
6790.00	25.50	4.49	6693.63	-259.10	840.04	-67.62	7.85
6822.00	29.03	2.65	6722.07	-244.47	840.94	-53.15	11.34
6854.00	33.42	3.45	6749.43	-227.91	841.82	-36.81	13.78
6886.00	36.65	3.86	6775.62	-209.58	843.00	-18.67	10.12
6917.00	40.69	3.91	6799.82	-190.26	844.31	0.47	13.03
6950.00	44.02	2.98	6824.21	-168.07	845.64	22.41	10.27
6982.00	48.10	0.73	6846.41	-145.05	846.37	45.02	13.72
7013.00	51.69	359.64	6866.37	-121.34	846.44	68.16	11.89
7045.00	55.16	359.24	6885.44	-95.65	846.19	93.17	10.89
7076.00	58.67	359.24	6902.36	-69.68	845.84	118.42	11.32
7107.00	61.66	359.39	6917.78	-42.79	845.52	144.58	9.65
7139.00	64.65	359.84	6932.23	-14.24	845.33	172.38	9.43
7170.00	67.41	0.17	6944.82	14.08	845.34	200.01	8.96
7202.00	70.15	0.37	6956.40	43.91	845.48	229.13	8.58
7233.00	72.54	0.56	6966.32	73.27	845.72	257.83	7.73
7265.00	73.27	0.22	6975.73	103.86	845.92	287.71	2.50
7297.00	75.37	359.56	6984.37	134.67	845.86	317.75	6.86
7328.00	78.61	358.88	6991.35	164.86	845.45	347.11	10.67
7360.00	81.72	359.12	6996.82	196.38	844.90	377.74	9.75
7391.00	84.12	359.23	7000.64	227.14	844.46	407.64	7.75
7428.00	88.11	358.47	7003.14	264.04	843.72	443.47	10.98
7544.00	89.51	357.06	7005.55	379.92	839.19	555.51	1.71
7638.00	89.65	357.63	7006.24	473.82	834.84	646.14	0.62
7733.00	90.26	358.16	7006.32	568.75	831.35	737.97	0.85
7828.00	90.35	358.86	7005.81	663.72	828.88	830.06	0.74
7923.00	91.50	0.27	7004.28	758.70	828.16	922.54	1.92
8018.00	90.00	359.99	7003.03	853.69	828.37	1015.24	1.61
8113.00	88.77	358.51	7004.05	948.67	827.13	1107.62	2.03
8208.00	89.03	358.69	7005.88	1043.63	824.81	1199.73	0.33
8303.00	88.94	358.33	7007.56	1138.58	822.34	1291.80	0.39
8398.00	89.29	359.04	7009.03	1233.54	820.16	1383.95	0.83
8493.00	89.75	359.66	7009.82	1328.53	819.08	1476.37	0.81
8589.00	89.74	0.63	7010.25	1424.53	819.33	1570.06	1.01
8683.00	89.57	0.97	7010.82	1518.52	820.64	1662.03	0.40

8778.00	89.56	2.04	7011.54	1613.48	823.13	1755.20	1.13
8873.00	89.74	3.09	7012.12	1708.38	827.39	1848.71	1.12
8967.00	90.25	2.58	7012.13	1802.27	832.03	1941.31	0.77
9063.00	88.03	0.25	7013.57	1898.22	834.41	2035.42	3.35
9158.00	87.78	0.04	7017.04	1993.15	834.65	2128.08	0.34
9252.00	87.72	358.49	7020.73	2087.07	833.44	2219.42	1.65
9347.00	88.77	0.35	7023.64	2182.01	832.48	2311.82	2.25
9442.00	91.23	1.68	7023.64	2276.99	834.16	2404.83	2.94
9537.00	90.44	4.15	7022.26	2371.85	838.99	2498.42	2.73
9631.00	89.51	5.96	7022.30	2465.48	847.28	2591.58	2.16
9726.00	89.38	7.39	7023.22	2559.83	858.32	2686.04	1.51
9821.00	89.63	7.06	7024.04	2654.07	870.26	2780.60	0.44
9917.00	89.81	6.93	7024.51	2749.35	881.96	2876.12	0.23
10012.00	90.00	5.98	7024.66	2843.75	892.64	2970.55	1.02
10107.00	89.38	8.05	7025.18	2938.03	904.24	3065.07	2.27
10202.00	88.70	7.47	7026.77	3032.15	917.06	3159.70	0.94
10297.00	88.52	9.76	7029.07	3126.04	931.29	3254.42	2.42
10392.00	87.66	9.11	7032.24	3219.70	946.85	3349.21	1.13
10486.00	88.77	8.31	7035.17	3312.57	961.08	3442.93	1.46
10581.00	89.01	8.00	7037.01	3406.59	974.55	3537.61	0.41
10676.00	90.80	7.03	7037.17	3500.77	986.98	3632.21	2.14
10770.00	90.00	6.31	7036.51	3594.13	997.89	3725.68	1.14
10866.00	91.11	3.15	7035.58	3689.79	1005.81	3820.73	3.49
10960.00	89.63	0.48	7034.97	3783.73	1008.79	3913.01	3.25
11055.00	92.53	1.16	7033.18	3878.69	1010.14	4005.94	3.14
11149.00	92.83	1.39	7028.79	3972.56	1012.23	4097.97	0.40
11244.00	92.10	0.93	7024.70	4067.45	1014.15	4190.95	0.91
11339.00	89.47	359.39	7023.40	4162.43	1014.42	4283.65	3.21
11434.00	91.42	359.58	7022.66	4257.42	1013.57	4376.12	2.06
11528.00	90.12	359.59	7021.40	4351.41	1012.89	4467.65	1.38
11537.00	90.49	359.70	7021.35	4360.41	1012.83	4476.41	4.29
11591.00	90.49	359.70	7020.89	4414.41	1012.55	4529.02	0.00

Weatherford M/LWD Surveys from 1043.00 ft MD to 11537.00 ft MD.

TD 11591.00 ft MD.

The total correction is 8.56 deg relative to True North.



Weatherford[®]

Field Print

COMPANY	<u>Anadarko</u>		
WELL	<u>Haymaker 29N-9HZ</u>		
FIELD	<u>Wattenberg</u>		
RIG	<u>H & P 307</u>		
LOC.	<u>Colorado</u>	COUNTY	<u>Weld</u>