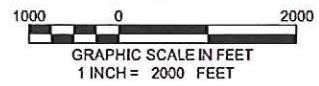
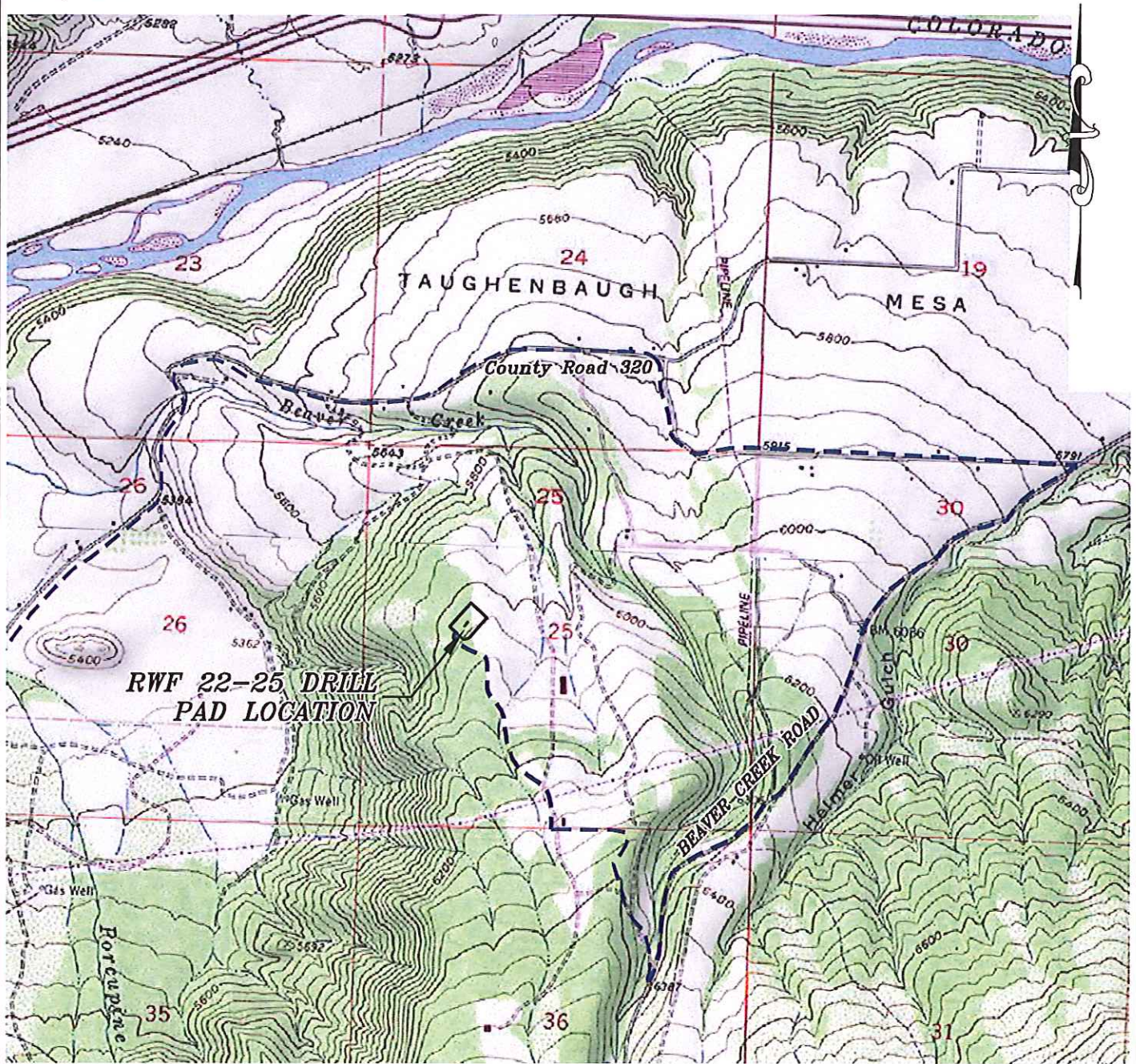


Section 25
T. 6 S., R 94 W.

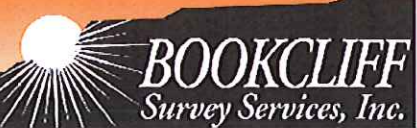


ACCESS DESCRIPTION:
 FROM THE INTERSECTION OF STATE HIGHWAY 6 AND COUNTY ROAD 323 NORTH OF RULISON, PROCEED SOUTHERLY ALONG COUNTY ROAD 323 ±1.1 MILES TO THE INTERSECTION WITH COUNTY ROAD 309, PROCEED LEFT IN AN EASTERLY DIRECTION ±2.3 MILES TO THE INTERSECTION WITH COUNTY ROAD 320, PROCEED RIGHT IN AN EASTERLY DIRECTION ±6.1 MILES TO THE INTERSECTION WITH COUNTY ROAD 317 (Beaver Creek Road), PROCEED RIGHT IN A SOUTHERLY DIRECTION ±1.7 MILES TO THE INTERSECTION WITH A DIRT/GRAVEL ROAD, PROCEED RIGHT IN AN WESTERLY DIRECTION ±0.6 MILES TO AN INTERSECTION WITH A DIRT/GRAVEL ROAD, PROCEED RIGHT IN A NORTHERLY DIRECTION ±0.6 MILES TO THE RWF 22-25 DRILL PAD LOCATION, AS SHOWN HEREON.

Construction Plan Prepared for:
WPXENERGY WPX Energy Rocky Mountain, LLC

*RWF 22-25 Drill Pad - Plat 5
 ACCESS ROAD & TOPO MAP*

136 East Third Street
 Rifle, Colorado 81650
 Ph. (970) 625-2720
 Fax: (970) 625-2773



SCALE: 1" = 2000'
 DATE: 1/11/13
 PLAT: 5 of 7
 PROJECT: Valley
 DFT: cws

K:\2012 WILLIAMS VALLEY\RWF 22-25\RWF 22-25.dwg, 1/10/2013 12:02:06 PM