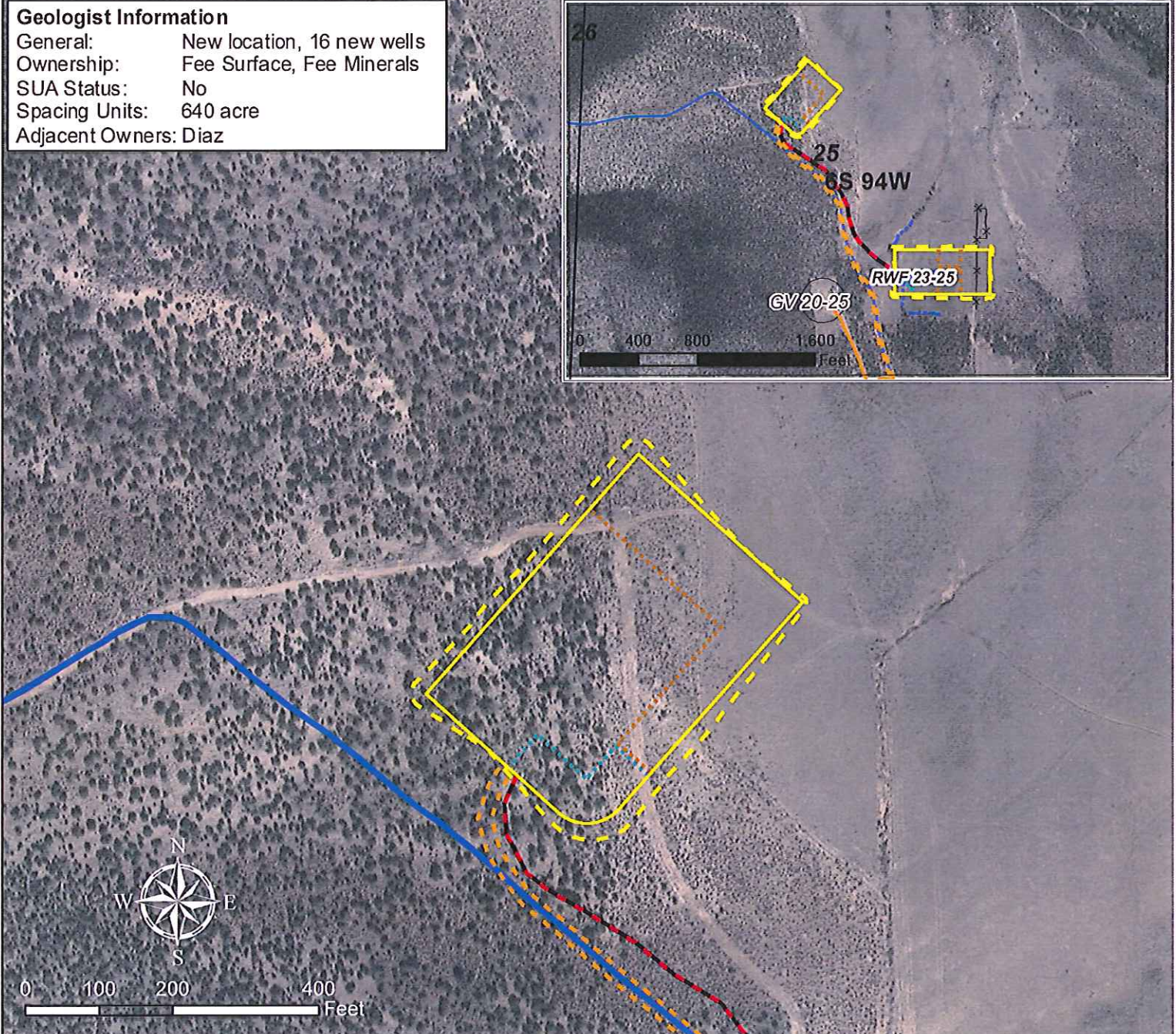
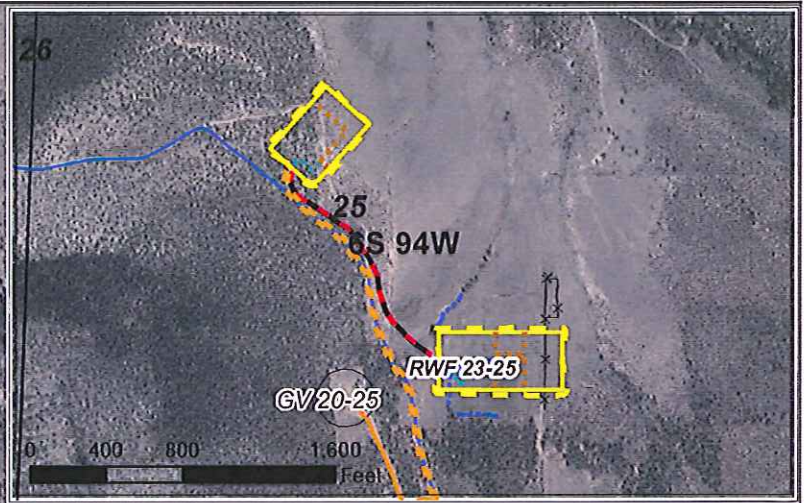


Geologist Information

General: New location, 16 new wells
 Ownership: Fee Surface, Fee Minerals
 SUA Status: No
 Spacing Units: 640 acre
 Adjacent Owners: Diaz



Plan of Development

Access: New road
Drilling: Efficiency rig
Cuttings: Cuttings managed on surface on south and east edge of pad
SIMOPS: Yes
Completion: Will frac from the RWF 23-25 frac pad. Will run 3 – 4.5" temp surface frac lines from RWF 23-25 to pad. Water will be pumped to frac pad via buried water line.
Flowback: Flow back to the RWF 23-25 frac pad.
Prod Equip: Production equipment to on the southern corner of pad. Water will be piped into water lines to existing infrastructure near the Juhan tank pad. Condensate will be stored in tanks on pad and then hauled off.
Pipeline: ETC dedicated.

Legend

- Proposed Road
- Proposed Cuttings Management Area
- Proposed Production Equipment Area
- Proposed Daylight Line
- Proposed Pad or Pit
- Temporary Surface Frac Lines
- Existing Gas Pipeline
- Existing Water Pipeline
- Proposed Water Pipeline
- Existing Road
- Existing Pad

WPX Energy Rocky Mountain, LLC

RWF 22-25 Plan of Development
 T6S R94W, Section 25

Date Prepared: February 21, 2013

