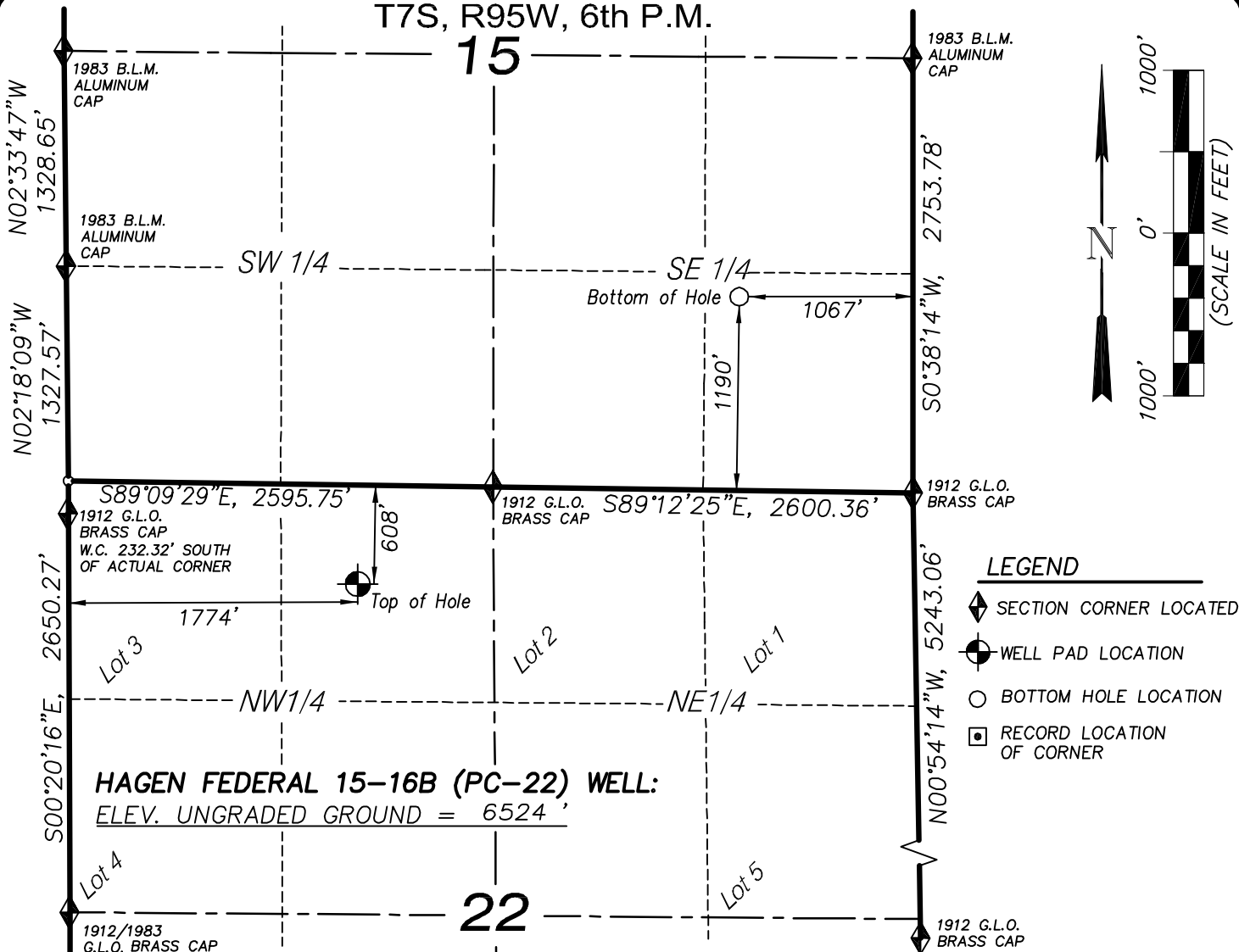


T7S, R95W, 6th P.M.

15

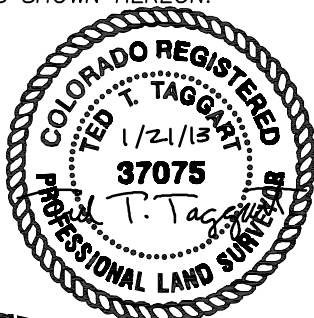


### HAGEN FEDERAL 15-16B WELL (PC-22)

(WELLHEAD LOCATION) NAD 83  
LATITUDE = 39.428594° N  
LONGITUDE = 107.986492° W  
(BOTTOM HOLE LOCATION) NAD 83  
LATITUDE = 39.433454° N  
LONGITUDE = 107.978144° W

### CERTIFICATE OF SURVEYOR

I, TED TAGGART OF FRUITA, COLORADO HEREBY CERTIFY THAT THIS MAP WAS MADE FROM NOTES TAKEN DURING AN ACTUAL SURVEY MADE BY ME OR UNDER MY DIRECTION FOR ENCANA OIL & GAS (USA) INC. AND THAT THIS LOCATION HAS BEEN STAKED ON THE GROUND AS SHOWN HEREON.



906 Main Street  
Evanston, Wyoming 82930  
Phone No. (307) 789-4545

## MAP to ACCOMPANY APPLICATION for PERMIT to DRILL Encana Oil & Gas (USA) Inc. Hagen Federal 15-16B (PC-22) Well

NE1/4 NW1/4, SECTION 22  
T7S, R95W, 6th P.M.  
GARFIELD COUNTY, COLORADO

Location Plat	Scale: 1" = 1000'	SHEET
Project No. 07-04-103	Date Surveyed: 9/27/07	<b>1q</b> OF 10
Date Drawn: 1/27/08	Latest Revision Date: 1/21/13	