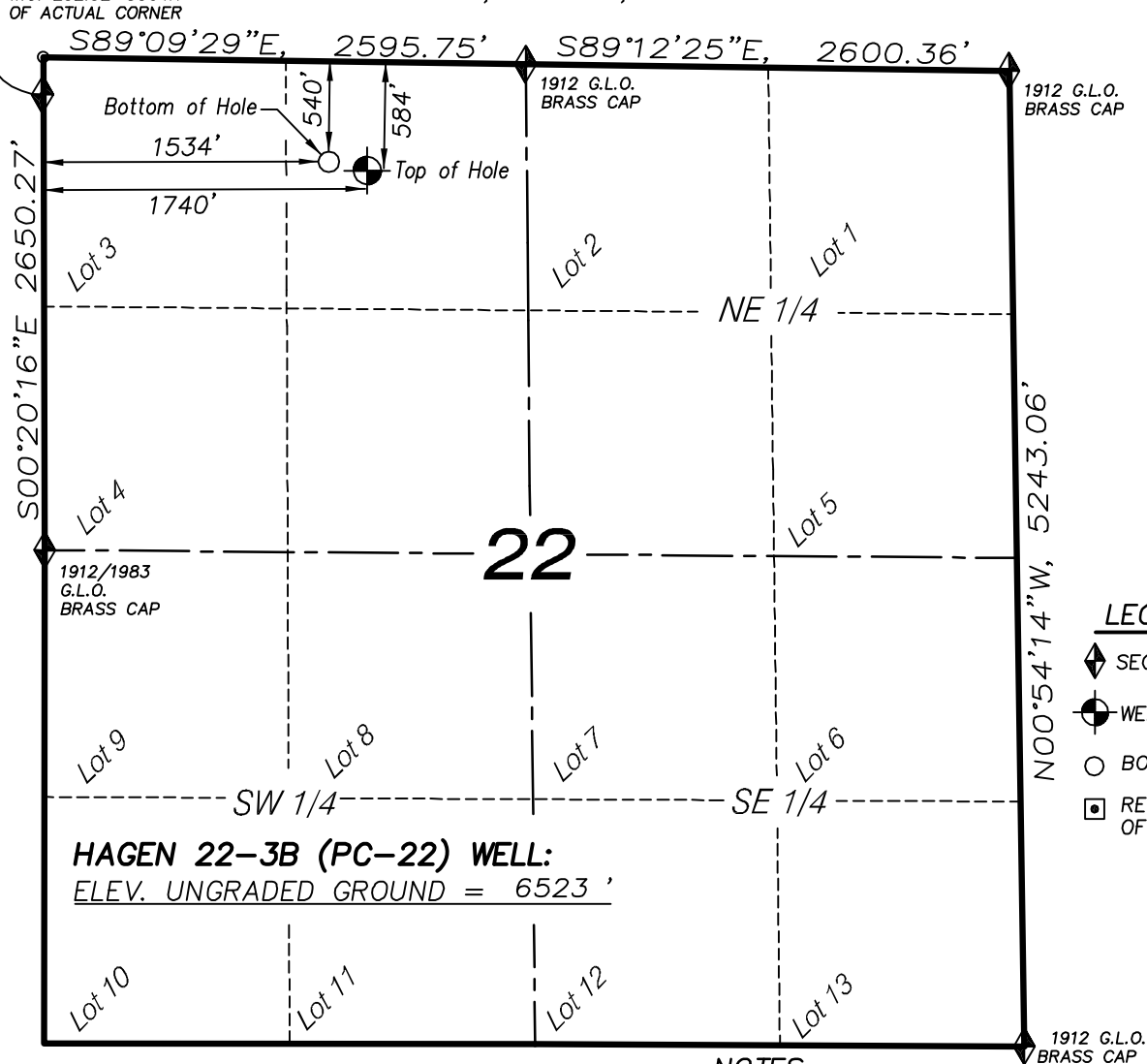


1912 G.L.O. Brass cap  
W.C. 232.32' SOUTH  
OF ACTUAL CORNER

T7S, R95W, 6th P.M.



#### LEGEND

- ◆ SECTION CORNER LOCATED
- ⊙ WELL PAD LOCATION
- BOTTOM HOLE LOCATION
- RECORD LOCATION OF CORNER

**HAGEN 22-3B (PC-22) WELL:**  
ELEV. UNGRADED GROUND = 6523 '

#### NOTES

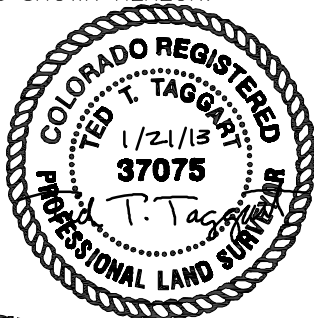
1. WELL FOOTAGES ARE MEASURED AT RIGHT ANGLES TO SECTION LINES.
2. BASIS OF BEARING: GEODETIC- BASED ON GPS OBSERVATIONS.
3. ELEVATIONS BASED ON GPS OBSERVATIONS, NAVD 88 (GEOID 03), POST PROCESSED USING NGS OPUS.
4. THE BOTTOM HOLE BEARS N77°05'31"W, 212' FROM TOP OF HOLE.
5. SEE ADDENDUM TO LEGAL PLAT (SHEET 1v) FOR VISIBLE IMPROVEMENTS WITHIN 400 FEET OF THE PROPOSED OIL & GAS LOCATION.
6. CONTROL FOR SURVEY WAS ESTABLISHED USING DIFFERENTIALLY CORRECTED GPS FROM AN OPUS BASED CONTROL NETWORK. WELL LOCATION WAS ESTABLISHED USING NON-GPS CONVENTIONAL METHODS, THEREFORE NO PDOP READING WAS TAKEN.

#### HAGEN 22-3B WELL (PC-22)

(WELLHEAD LOCATION) NAD 83  
LATITUDE = 39.428659° N  
LONGITUDE = 107.986614° W  
(BOTTOM HOLE LOCATION) NAD 83  
LATITUDE = 39.428787° N  
LONGITUDE = 107.987344° W

#### CERTIFICATE OF SURVEYOR

I, TED TAGGART OF FRUITA, COLORADO HEREBY CERTIFY THAT THIS MAP WAS MADE FROM NOTES TAKEN DURING AN ACTUAL SURVEY MADE BY ME OR UNDER MY DIRECTION FOR ENCANA OIL & GAS (USA) INC. AND THAT THIS LOCATION HAS BEEN STAKED ON THE GROUND AS SHOWN HEREON.



906 Main Street  
Evanston, Wyoming 82930  
Phone No. (307) 789-4545

MAP to ACCOMPANY  
APPLICATION for PERMIT to DRILL  
Encana Oil & Gas (USA) Inc.  
**Hagen 22-3B (PC-22) Well**

NE1/4 NW1/4, SECTION 22  
T7S, R95W, 6th P.M.  
GARFIELD COUNTY, COLORADO

Location Plat		Scale: 1" = 1000'	SHEET <b>1i</b> OF 10
Project No.	07-04-103	Date Surveyed: 9/27/07	
Date Drawn:	1/27/08	Latest Revision Date: 1/21/13	