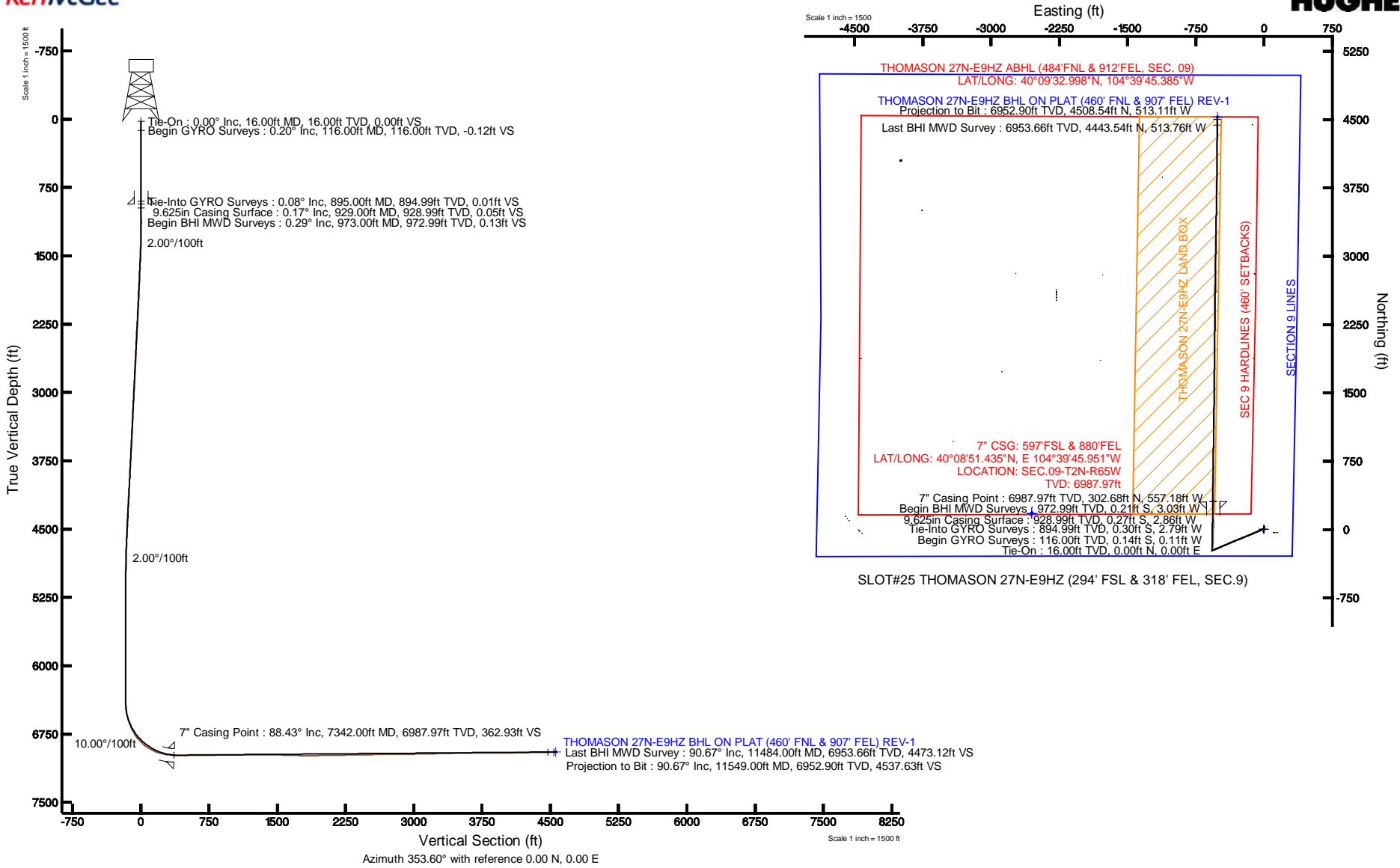


KERR-MCGEE OIL & GAS ONSHORE LP

Location: COLORADO Slot: SLOT#25 THOMASON 27N-E9HZ (294' FSL & 318' FEL, SEC.9)
 Field: WELD COUNTY (KERR MCGEE) Well: THOMASON 27N-E9HZ
 Facility: SEC.09-T2N-R65W Wellbore: THOMASON 27N-E9HZ PWB

Plot reference wellpath is THOMASON 27N-E9HZ (REV-A.0) PWB

True vertical depths are referenced to XTREME 20 (RT)	Grid System: NAD83 / Lambert Colorado SP, Northern Zone (501), US feet
Measured depths are referenced to XTREME 20 (RT)	North Reference: True north
XTREME 20 (RT) to Mean Sea Level: 4886 feet	Scale: True distance
Mean Sea Level to Mud line (At Slot: SLOT#25 THOMASON 27N-E9HZ (294' FSL & 318' FEL, SEC.9)): 0 feet	Depths are in feet
Coordinates are in feet referenced to Slot	Created by: preacin on 2/22/2013





Actual Wellpath Report

THOMASON 27N-E9HZ AWP

Page 1 of 7



REFERENCE WELLPATH IDENTIFICATION

Operator	KERR-MCGEE OIL & GAS ONSHORE LP	Slot	SLOT#25 THOMASON 27N-E9HZ (294' FSL & 318' FEL, SEC.9)
Area	COLORADO	Well	THOMASON 27N-E9HZ
Field	WELD COUNTY (KERR MCGEE)	Wellbore	THOMASON 27N-E9HZ AWB
Facility	SEC.09-T2N-R65W		

REPORT SETUP INFORMATION

Projection System	NAD83 / Lambert Colorado SP, Northern Zone (501), US feet	Software System	WellArchitect® 3.0.0
North Reference	True	User	Precain
Scale	0.999958	Report Generated	2/18/2013 at 7:45:16 PM
Convergence at slot	0.54° East	Database/Source file	WellArchitectDB/THOMASON_27N-E9HZ_AWB.xml

WELLPATH LOCATION

	Local coordinates		Grid coordinates		Geographic coordinates	
	North[ft]	East[ft]	Easting[US ft]	Northing[US ft]	Latitude	Longitude
Slot Location	12.04	4457.01	3234603.42	1297429.20	40°08'48.444"N	104°39'38.776"W
Facility Reference Pt			3230146.91	1297375.78	40°08'48.329"N	104°40'36.170"W
Field Reference Pt			3197771.84	1268891.29	40°04'09.600"N	104°47'36.000"W

WELLPATH DATUM

Calculation method	Minimum curvature	XTREME 20 (RT) to Facility Vertical Datum	4886.00ft
Horizontal Reference Pt	Slot	XTREME 20 (RT) to Mean Sea Level	4886.00ft
Vertical Reference Pt	XTREME 20 (RT)	XTREME 20 (RT) to Mud Line at Slot (SLOT#25 THOMASON 27N-E9HZ (294' FSL & 318' FEL, SEC.9))	4886.00ft
MD Reference Pt	XTREME 20 (RT)	Section Origin	N 0.00, E 0.00 ft
Field Vertical Reference	Mean Sea Level	Section Azimuth	353.51°



Actual Wellpath Report

THOMASON 27N-E9HZ AWP



REFERENCE WELLPATH IDENTIFICATION			
Operator	KERR-MCGEE OIL & GAS ONSHORE LP	Slot	SLOT#25 THOMASON 27N-E9HZ (294' FSL & 318' FEL, SEC.9)
Area	COLORADO	Well	THOMASON 27N-E9HZ
Field	WELD COUNTY (KERR MCGEE)	Wellbore	THOMASON 27N-E9HZ AWP
Facility	SEC.09-T2N-R65W		

WELLPATH DATA (148 stations) † = interpolated/extrapolated station										
MD [ft]	Inclination [°]	Azimuth [°]	TVD [ft]	Vert Sect [ft]	North [ft]	East [ft]	Latitude	Longitude	DLS [°/100ft]	Comments
0.00†	0.000	219.050	0.00	0.00	0.00	0.00	40°08'48.444"N	104°39'38.776"W	0.00	
16.00	0.000	219.050	16.00	0.00	0.00	0.00	40°08'48.444"N	104°39'38.776"W	0.00	Tie-On
116.00	0.200	219.050	116.00	-0.12	-0.14	-0.11	40°08'48.443"N	104°39'38.777"W	0.20	Begin GYRO Surveys
216.00	0.470	262.120	216.00	-0.25	-0.33	-0.63	40°08'48.441"N	104°39'38.784"W	0.35	
316.00	0.250	199.820	316.00	-0.46	-0.59	-1.11	40°08'48.438"N	104°39'38.790"W	0.42	
416.00	0.230	240.520	416.00	-0.73	-0.89	-1.36	40°08'48.435"N	104°39'38.793"W	0.17	
516.00	0.240	306.810	515.99	-0.67	-0.87	-1.70	40°08'48.435"N	104°39'38.798"W	0.26	
616.00	0.160	271.720	615.99	-0.50	-0.74	-2.00	40°08'48.437"N	104°39'38.802"W	0.14	
716.00	0.210	300.250	715.99	-0.38	-0.64	-2.30	40°08'48.438"N	104°39'38.806"W	0.10	
816.00	0.230	307.310	815.99	-0.13	-0.43	-2.62	40°08'48.440"N	104°39'38.810"W	0.03	
895.00	0.080	299.900	894.99	0.02	-0.30	-2.79	40°08'48.441"N	104°39'38.812"W	0.19	Tie-Into GYRO Surveys
973.00	0.290	288.360	972.99	0.13	-0.21	-3.03	40°08'48.442"N	104°39'38.815"W	0.27	Begin BHI MWD Surveys
1065.00	0.300	311.260	1064.99	0.41	0.02	-3.43	40°08'48.444"N	104°39'38.820"W	0.13	
1157.00	1.920	258.960	1156.97	0.46	-0.12	-5.12	40°08'48.443"N	104°39'38.842"W	1.91	
1249.00	3.250	245.950	1248.88	-0.45	-1.48	-9.02	40°08'48.429"N	104°39'38.892"W	1.57	
1336.00	5.250	240.040	1335.63	-2.77	-4.47	-14.72	40°08'48.400"N	104°39'38.966"W	2.35	
1422.00	7.120	242.450	1421.13	-6.26	-8.90	-22.86	40°08'48.356"N	104°39'39.070"W	2.19	
1507.00	8.520	250.460	1505.34	-9.57	-13.44	-33.46	40°08'48.311"N	104°39'39.207"W	2.08	
1592.00	9.470	251.420	1589.29	-12.46	-17.78	-46.02	40°08'48.268"N	104°39'39.369"W	1.13	
1677.00	9.520	252.410	1673.13	-15.27	-22.13	-59.35	40°08'48.225"N	104°39'39.540"W	0.20	
1763.00	9.250	250.920	1757.98	-18.15	-26.54	-72.66	40°08'48.182"N	104°39'39.712"W	0.42	
1848.00	8.750	249.440	1841.93	-21.21	-31.04	-85.17	40°08'48.137"N	104°39'39.873"W	0.65	
1933.00	8.770	249.490	1925.94	-24.35	-35.58	-97.30	40°08'48.092"N	104°39'40.029"W	0.03	
2018.00	8.550	243.750	2009.97	-28.06	-40.65	-109.03	40°08'48.042"N	104°39'40.180"W	1.05	
2103.00	9.430	245.320	2093.93	-32.37	-46.35	-121.03	40°08'47.986"N	104°39'40.334"W	1.07	
2189.00	10.010	246.120	2178.69	-36.80	-52.32	-134.26	40°08'47.927"N	104°39'40.505"W	0.69	
2274.00	10.770	247.320	2262.30	-41.22	-58.37	-148.35	40°08'47.867"N	104°39'40.686"W	0.93	
2359.00	9.900	248.530	2345.92	-45.32	-64.11	-162.47	40°08'47.810"N	104°39'40.868"W	1.05	
2444.00	10.730	246.680	2429.54	-49.50	-69.91	-176.54	40°08'47.753"N	104°39'41.049"W	1.05	
2529.00	9.660	247.710	2513.20	-53.73	-75.75	-190.41	40°08'47.695"N	104°39'41.228"W	1.28	
2615.00	11.130	248.980	2597.79	-57.78	-81.46	-204.83	40°08'47.639"N	104°39'41.414"W	1.73	
2700.00	9.960	248.250	2681.35	-61.77	-87.13	-219.32	40°08'47.583"N	104°39'41.600"W	1.39	
2785.00	10.350	247.960	2765.02	-65.75	-92.72	-233.22	40°08'47.528"N	104°39'41.779"W	0.46	
2870.00	10.090	245.980	2848.67	-70.04	-98.62	-247.10	40°08'47.469"N	104°39'41.958"W	0.51	
2955.00	9.820	247.500	2932.39	-74.28	-104.42	-260.60	40°08'47.412"N	104°39'42.132"W	0.44	
3041.00	10.250	245.980	3017.07	-78.61	-110.34	-274.36	40°08'47.354"N	104°39'42.309"W	0.59	
3126.00	10.160	247.230	3100.73	-82.99	-116.32	-288.18	40°08'47.294"N	104°39'42.487"W	0.28	
3211.00	10.550	248.640	3184.35	-87.09	-122.06	-302.34	40°08'47.238"N	104°39'42.669"W	0.55	
3296.00	10.030	250.430	3267.98	-90.76	-127.37	-316.56	40°08'47.185"N	104°39'42.852"W	0.72	
3382.00	9.390	247.550	3352.75	-94.38	-132.56	-330.11	40°08'47.134"N	104°39'43.027"W	0.93	
3467.00	8.840	243.620	3436.67	-98.51	-138.11	-342.36	40°08'47.079"N	104°39'43.185"W	0.98	
3552.00	8.910	245.750	3520.66	-102.74	-143.72	-354.22	40°08'47.024"N	104°39'43.337"W	0.40	
3637.00	9.860	245.490	3604.52	-107.00	-149.44	-366.84	40°08'46.967"N	104°39'43.500"W	1.12	
3723.00	10.000	246.890	3689.23	-111.41	-155.42	-380.41	40°08'46.908"N	104°39'43.675"W	0.32	
3808.00	10.410	246.790	3772.88	-115.73	-161.35	-394.25	40°08'46.850"N	104°39'43.853"W	0.48	



Actual Wellpath Report

THOMASON 27N-E9HZ AWP



REFERENCE WELLPATH IDENTIFICATION				
Operator	KERR-MCGEE OIL & GAS ONSHORE LP		Slot	SLOT#25 THOMASON 27N-E9HZ (294' FSL & 318' FEL, SEC.9)
Area	COLORADO		Well	THOMASON 27N-E9HZ
Field	WELD COUNTY (KERR MCGEE)		Wellbore	THOMASON 27N-E9HZ AWP
Facility	SEC.09-T2N-R65W			

WELLPATH DATA (148 stations)										
MD [ft]	Inclination [°]	Azimuth [°]	TVD [ft]	Vert Sect [ft]	North [ft]	East [ft]	Latitude	Longitude	DLS [°/100ft]	Comments
3893.00	10.000	247.160	3856.54	-120.02	-167.24	-408.11	40°08'46.791"N	104°39'44.031"W	0.49	
3978.00	10.080	246.300	3940.24	-124.29	-173.09	-421.73	40°08'46.733"N	104°39'44.207"W	0.20	
4063.00	11.030	245.330	4023.80	-129.03	-179.48	-435.93	40°08'46.670"N	104°39'44.390"W	1.14	
4148.00	10.290	244.060	4107.33	-134.10	-186.19	-450.14	40°08'46.604"N	104°39'44.573"W	0.91	
4234.00	8.860	241.910	4192.13	-139.09	-192.67	-462.89	40°08'46.540"N	104°39'44.737"W	1.71	
4319.00	8.910	241.280	4276.11	-143.99	-198.92	-474.44	40°08'46.478"N	104°39'44.885"W	0.13	
4404.00	9.760	247.370	4359.99	-148.48	-204.85	-486.87	40°08'46.420"N	104°39'45.045"W	1.53	
4490.00	8.900	246.840	4444.85	-152.42	-210.27	-499.71	40°08'46.366"N	104°39'44.573"W	1.00	
4575.00	8.870	250.070	4528.83	-155.83	-215.09	-511.92	40°08'46.318"N	104°39'45.368"W	0.59	
4660.00	8.570	249.770	4612.85	-158.85	-219.52	-524.02	40°08'46.275"N	104°39'45.524"W	0.36	
4745.00	8.330	249.450	4696.92	-161.85	-223.87	-535.73	40°08'46.232"N	104°39'45.675"W	0.29	
4830.00	7.480	250.420	4781.12	-164.60	-227.88	-546.71	40°08'46.192"N	104°39'45.816"W	1.01	
4915.00	6.260	254.500	4865.50	-166.58	-230.98	-556.38	40°08'46.161"N	104°39'45.941"W	1.54	
5001.00	5.480	245.740	4951.05	-168.57	-233.92	-564.65	40°08'46.132"N	104°39'46.047"W	1.38	
5086.00	4.790	249.510	5035.71	-170.66	-236.83	-571.67	40°08'46.104"N	104°39'46.137"W	0.90	
5171.00	3.370	259.050	5120.50	-171.72	-238.54	-577.45	40°08'46.087"N	104°39'46.212"W	1.85	
5256.00	1.680	258.780	5205.41	-172.01	-239.26	-581.12	40°08'46.080"N	104°39'46.259"W	1.99	
5341.00	0.520	346.370	5290.40	-171.73	-239.13	-582.44	40°08'46.081"N	104°39'46.276"W	2.04	
5426.00	0.910	52.880	5375.39	-171.01	-238.35	-581.99	40°08'46.089"N	104°39'46.270"W	1.00	
5512.00	0.800	67.240	5461.38	-170.49	-237.70	-580.89	40°08'46.095"N	104°39'46.256"W	0.28	
5597.00	1.020	68.020	5546.37	-170.12	-237.19	-579.64	40°08'46.100"N	104°39'46.240"W	0.26	
5682.00	1.170	78.770	5631.36	-169.85	-236.74	-578.09	40°08'46.104"N	104°39'46.220"W	0.30	
5767.00	1.060	90.970	5716.34	-169.88	-236.58	-576.45	40°08'46.106"N	104°39'46.199"W	0.31	
5852.00	1.080	96.710	5801.32	-170.16	-236.69	-574.87	40°08'46.105"N	104°39'46.179"W	0.13	
5938.00	0.880	90.650	5887.31	-170.43	-236.79	-573.41	40°08'46.104"N	104°39'46.160"W	0.26	
6023.00	0.580	85.880	5972.31	-170.53	-236.77	-572.32	40°08'46.104"N	104°39'46.146"W	0.36	
6108.00	0.290	95.700	6057.30	-170.59	-236.76	-571.68	40°08'46.104"N	104°39'46.138"W	0.35	
6193.00	0.150	228.490	6142.30	-170.70	-236.85	-571.55	40°08'46.103"N	104°39'46.136"W	0.48	
6278.00	0.120	234.710	6227.30	-170.81	-236.98	-571.71	40°08'46.102"N	104°39'46.138"W	0.04	
6363.00	0.220	253.970	6312.30	-170.88	-237.07	-571.94	40°08'46.101"N	104°39'46.141"W	0.13	
6449.00	0.630	61.310	6398.30	-170.73	-236.89	-571.68	40°08'46.103"N	104°39'46.138"W	0.98	
6492.00	2.910	33.250	6441.28	-169.80	-235.87	-570.87	40°08'46.113"N	104°39'46.127"W	5.52	
6534.00	7.470	15.510	6483.10	-166.45	-232.34	-569.56	40°08'46.148"N	104°39'46.110"W	11.38	
6576.00	12.320	7.680	6524.46	-159.57	-225.26	-568.23	40°08'46.218"N	104°39'46.093"W	11.96	
6619.00	15.780	6.550	6566.17	-149.42	-214.91	-566.95	40°08'46.320"N	104°39'46.077"W	8.07	
6661.00	17.900	12.200	6606.37	-137.74	-202.92	-564.93	40°08'46.439"N	104°39'46.051"W	6.37	
6704.00	21.450	9.910	6646.85	-123.93	-188.71	-562.18	40°08'46.579"N	104°39'46.015"W	8.45	
6746.00	24.290	7.900	6685.55	-108.19	-172.59	-559.67	40°08'46.738"N	104°39'45.983"W	7.01	
6790.00	28.310	5.110	6724.99	-89.20	-153.22	-557.50	40°08'46.930"N	104°39'45.955"W	9.56	
6832.00	33.950	3.140	6760.92	-67.86	-131.58	-555.97	40°08'47.144"N	104°39'45.935"W	13.64	
6875.00	38.890	1.210	6795.52	-42.63	-106.08	-555.02	40°08'47.396"N	104°39'45.923"W	11.79	
6917.00	43.450	0.610	6827.12	-15.22	-78.44	-554.59	40°08'47.669"N	104°39'45.918"W	10.90	
6960.00	48.020	0.190	6857.13	15.34	-47.65	-554.38	40°08'47.973"N	104°39'45.915"W	10.65	
7002.00	52.880	0.700	6883.86	47.48	-15.28	-554.13	40°08'48.293"N	104°39'45.912"W	11.61	
7045.00	57.830	0.770	6908.30	82.56	20.08	-553.67	40°08'48.642"N	104°39'45.906"W	11.51	



Actual Wellpath Report

THOMASON 27N-E9HZ AWP



REFERENCE WELLPATH IDENTIFICATION			
Operator	KERR-MCGEE OIL & GAS ONSHORE LP	Slot	SLOT#25 THOMASON 27N-E9HZ (294' FSL & 318' FEL, SEC.9)
Area	COLORADO	Well	THOMASON 27N-E9HZ
Field	WELD COUNTY (KERR MCGEE)	Wellbore	THOMASON 27N-E9HZ AWP
Facility	SEC.09-T2N-R65W		

WELLPATH DATA (148 stations) † = interpolated/extrapolated station										
MD [ft]	Inclination [°]	Azimuth [°]	TVD [ft]	Vert Sect [ft]	North [ft]	East [ft]	Latitude	Longitude	DLS [°/100ft]	Comments
7087.00	64.150	359.880	6928.66	119.01	56.79	-553.47	40°08'49.005"N	104°39'45.903"W	15.16	
7130.00	67.720	359.160	6946.19	158.05	96.05	-553.80	40°08'49.393"N	104°39'45.907"W	8.44	
7172.00	71.970	358.870	6960.66	197.29	135.46	-554.48	40°08'49.783"N	104°39'45.916"W	10.14	
7215.00	77.240	358.400	6972.07	238.57	176.89	-555.47	40°08'50.192"N	104°39'45.929"W	12.30	
7257.00	81.120	359.100	6979.95	279.64	218.13	-556.37	40°08'50.599"N	104°39'45.941"W	9.38	
7295.00	84.010	359.650	6984.87	317.12	255.80	-556.78	40°08'50.972"N	104°39'45.946"W	7.74	
7342.00†	88.434	359.374	6987.97	363.75	302.68	-557.18	40°08'51.435"N	104°39'45.951"W	9.43	7" Casing Point
7353.00	89.470	359.310	6988.17	374.69	313.68	-557.31	40°08'51.544"N	104°39'45.953"W	9.43	
7439.00	89.410	359.130	6989.01	460.26	399.67	-558.48	40°08'52.394"N	104°39'45.968"W	0.22	
7524.00	89.690	359.570	6989.68	544.81	484.66	-559.44	40°08'53.233"N	104°39'45.980"W	0.61	
7609.00	90.980	0.320	6989.18	629.27	569.66	-559.52	40°08'54.073"N	104°39'45.981"W	1.76	
7694.00	91.010	1.260	6987.70	713.57	654.64	-558.35	40°08'54.913"N	104°39'45.966"W	1.11	
7779.00	91.530	1.450	6985.82	797.76	739.59	-556.34	40°08'55.753"N	104°39'45.940"W	0.65	
7865.00	91.910	1.180	6983.24	882.92	825.53	-554.37	40°08'56.602"N	104°39'45.915"W	0.54	
7950.00	90.490	0.880	6981.46	967.17	910.49	-552.84	40°08'57.442"N	104°39'45.895"W	1.71	
8035.00	89.530	1.000	6981.44	1051.45	995.48	-551.45	40°08'58.281"N	104°39'45.877"W	1.14	
8120.00	90.000	1.580	6981.79	1135.67	1080.46	-549.53	40°08'59.121"N	104°39'45.853"W	0.88	
8206.00	90.740	1.360	6981.24	1220.84	1166.43	-547.33	40°08'59.971"N	104°39'45.824"W	0.90	
8291.00	89.350	0.840	6981.17	1305.09	1251.41	-545.70	40°09'00.810"N	104°39'45.803"W	1.75	
8376.00	90.060	1.310	6981.61	1389.35	1336.39	-544.10	40°09'01.650"N	104°39'45.783"W	1.00	
8462.00	88.270	0.580	6982.86	1474.61	1422.37	-542.68	40°09'02.500"N	104°39'45.765"W	2.25	
8547.00	88.270	0.730	6985.43	1558.91	1507.32	-541.71	40°09'03.339"N	104°39'45.752"W	0.18	
8632.00	88.240	0.960	6988.01	1643.18	1592.28	-540.46	40°09'04.179"N	104°39'45.736"W	0.27	
8718.00	88.830	359.850	6990.21	1728.53	1678.24	-539.85	40°09'05.028"N	104°39'45.728"W	1.46	
8803.00	89.290	0.160	6991.61	1812.97	1763.23	-539.84	40°09'05.868"N	104°39'45.728"W	0.65	
8888.00	91.130	359.730	6991.30	1897.43	1848.23	-539.92	40°09'06.708"N	104°39'45.729"W	2.22	
8974.00	90.920	359.740	6989.76	1982.91	1934.21	-540.32	40°09'07.558"N	104°39'45.734"W	0.24	
9059.00	90.830	359.230	6988.46	2067.43	2019.20	-541.09	40°09'08.398"N	104°39'45.744"W	0.61	
9144.00	91.230	359.450	6986.93	2151.98	2104.18	-542.07	40°09'09.238"N	104°39'45.757"W	0.54	
9229.00	91.230	359.550	6985.11	2236.50	2189.16	-542.81	40°09'10.077"N	104°39'45.766"W	0.12	
9314.00	90.920	0.480	6983.51	2320.93	2274.14	-542.78	40°09'10.917"N	104°39'45.766"W	1.15	
9400.00	90.920	0.360	6982.13	2406.30	2360.13	-542.15	40°09'11.767"N	104°39'45.758"W	0.14	
9485.00	90.890	0.590	6980.79	2490.66	2445.11	-541.45	40°09'12.607"N	104°39'45.749"W	0.27	
9570.00	91.260	0.120	6979.19	2575.04	2530.10	-540.92	40°09'13.447"N	104°39'45.742"W	0.70	
9655.00	90.580	1.150	6977.83	2659.37	2615.08	-539.98	40°09'14.286"N	104°39'45.730"W	1.45	
9741.00	90.610	1.430	6976.94	2744.57	2701.05	-538.05	40°09'15.136"N	104°39'45.705"W	0.33	
9826.00	90.210	1.140	6976.33	2828.79	2786.03	-536.14	40°09'15.976"N	104°39'45.681"W	0.58	
9911.00	90.360	0.950	6975.91	2913.05	2871.01	-534.59	40°09'16.815"N	104°39'45.661"W	0.28	
9997.00	91.070	1.170	6974.83	2998.30	2956.99	-533.00	40°09'17.665"N	104°39'45.640"W	0.86	
10082.00	91.200	1.180	6973.15	3082.52	3041.96	-531.26	40°09'18.505"N	104°39'45.618"W	0.15	
10167.00	91.350	1.010	6971.26	3166.75	3126.92	-529.63	40°09'19.344"N	104°39'45.597"W	0.27	
10252.00	91.890	1.320	6968.85	3250.96	3211.87	-527.90	40°09'20.184"N	104°39'45.575"W	0.73	
10338.00	91.140	1.270	6966.58	3336.14	3297.82	-525.96	40°09'21.033"N	104°39'45.550"W	0.87	
10423.00	91.670	1.330	6964.50	3420.33	3382.77	-524.03	40°09'21.873"N	104°39'45.525"W	0.63	
10508.00	91.660	1.200	6962.03	3504.51	3467.71	-522.16	40°09'22.712"N	104°39'45.501"W	0.15	



Actual Wellpath Report

THOMASON 27N-E9HZ AWP

Page 5 of 7



REFERENCE WELLPATH IDENTIFICATION

Operator	KERR-MCGEE OIL & GAS ONSHORE LP	Slot	SLOT#25 THOMASON 27N-E9HZ (294' FSL & 318' FEL, SEC.9)
Area	COLORADO	Well	THOMASON 27N-E9HZ
Field	WELD COUNTY (KERR MCGEE)	Wellbore	THOMASON 27N-E9HZ AWB
Facility	SEC.09-T2N-R65W		

WELLPATH DATA (148 stations)

MD [ft]	Inclination [°]	Azimuth [°]	TVD [ft]	Vert Sect [ft]	North [ft]	East [ft]	Latitude	Longitude	DLS [°/100ft]	Comments
10593.00	89.560	0.990	6961.12	3588.76	3552.69	-520.53	40°09'23.552"N	104°39'45.480"W	2.48	
10679.00	89.470	1.660	6961.85	3673.96	3638.66	-518.54	40°09'24.401"N	104°39'45.454"W	0.79	
10764.00	90.210	0.650	6962.09	3758.20	3723.64	-516.83	40°09'25.241"N	104°39'45.432"W	1.47	
10849.00	89.440	359.810	6962.35	3842.61	3808.64	-516.49	40°09'26.081"N	104°39'45.428"W	1.34	
10934.00	90.890	359.860	6962.10	3927.09	3893.63	-516.74	40°09'26.921"N	104°39'45.431"W	1.71	
11019.00	90.950	0.080	6960.74	4011.54	3978.62	-516.78	40°09'27.761"N	104°39'45.432"W	0.27	
11105.00	91.170	359.770	6959.15	4096.99	4064.61	-516.89	40°09'28.611"N	104°39'45.433"W	0.44	
11190.00	91.620	0.460	6957.08	4181.40	4149.58	-516.72	40°09'29.450"N	104°39'45.431"W	0.97	
11275.00	90.340	0.560	6955.62	4265.75	4234.57	-515.97	40°09'30.290"N	104°39'45.421"W	1.51	
11360.00	90.550	0.390	6954.96	4350.12	4319.56	-515.26	40°09'31.130"N	104°39'45.412"W	0.32	
11445.00	90.620	0.940	6954.10	4434.45	4404.55	-514.27	40°09'31.970"N	104°39'45.400"W	0.65	
11484.00	90.670	0.570	6953.66	4473.14	4443.54	-513.76	40°09'32.355"N	104°39'45.393"W	0.96	Last BHI MWD Survey
11549.00	90.670	0.570	6952.90	4537.64	4508.54	-513.11	40°09'32.998"N	104°39'45.385"W	0.00	Projection to Bit

HOLE & CASING SECTIONS - Ref Wellbore: THOMASON 27N-E9HZ AWB Ref Wellpath: THOMASON 27N-E9HZ AWP

String/Diameter	Start MD [ft]	End MD [ft]	Interval [ft]	Start TVD [ft]	End TVD [ft]	Start N/S [ft]	Start E/W [ft]	End N/S [ft]	End E/W [ft]
13.5in Open Hole	16.00	929.00	913.00	16.00	928.99	0.00	0.00	-0.27	-2.86
9.625in Casing Surface	16.00	929.00	913.00	16.00	928.99	0.00	0.00	-0.27	-2.86
8.75in Open Hole	929.00	7352.00	6423.00	928.99	6988.16	-0.27	-2.86	312.68	-557.29
7in Casing Intermediate	16.00	7342.00	7326.00	16.00	6987.97	0.00	0.00	302.68	-557.18
6.125in Open Hole	7342.00	11549.00	4207.00	6987.97	6952.90	302.68	-557.18	4508.54	-513.11



Actual Wellpath Report

THOMASON 27N-E9HZ AWP

Page 6 of 7



REFERENCE WELLPATH IDENTIFICATION

Operator	KERR-MCGEE OIL & GAS ONSHORE LP	Slot	SLOT#25 THOMASON 27N-E9HZ (294' FSL & 318' FEL, SEC.9)
Area	COLORADO	Well	THOMASON 27N-E9HZ
Field	WELD COUNTY (KERR MCGEE)	Wellbore	THOMASON 27N-E9HZ AWB
Facility	SEC.09-T2N-R65W		

TARGETS

Name	MD [ft]	TVD [ft]	North [ft]	East [ft]	Grid East [US ft]	Grid North [US ft]	Latitude	Longitude	Shape
SECTION 9 LINES		-11.00	175.40	-2552.39	3232049.59	1297580.42	40°08'50.176"N	104°40'11.644"W	polygon
THOMASON 27N-E9HZ BHL ON PLAT (460' FNL & 907' FEL) REV-1		6951.00	4533.27	-508.71	3234051.85	1301957.25	40°09'33.242"N	104°39'45.328"W	point
THOMASON 27N-E9HZ LAND BOX		7000.00	0.00	0.00	3234603.42	1297429.20	40°08'48.444"N	104°39'38.776"W	polygon
SEC 9 HARDLINES (460' SETBACKS)		7189.00	175.40	-2552.39	3232049.59	1297580.42	40°08'50.176"N	104°40'11.644"W	polygon

WELLPATH COMPOSITION - Ref Wellbore: THOMASON 27N-E9HZ AWB Ref Wellpath: THOMASON 27N-E9HZ AWP

Start MD [ft]	End MD [ft]	Positional Uncertainty Model	Log Name/Comment	Wellbore
16.00	895.00	Generic gyro - continuous (Standard)	GYRODATA SURVEYS <116-895>	THOMASON 27N-E9HZ AWB
895.00	7295.00	NaviTrak (MagCorr)	BHI MWD SURVEYS 8 3/4" HOLE <973-7295>	THOMASON 27N-E9HZ AWB
7295.00	11484.00	OnTrak (MagCorr)	BHI MWD SURVEYS 6 1/8" HOLE <7353-11484>	THOMASON 27N-E9HZ AWB
11484.00	11549.00	Blind Drilling (std)	Projection to bit	THOMASON 27N-E9HZ AWB



Actual Wellpath Report

THOMASON 27N-E9HZ AWP

Page 7 of 7



REFERENCE WELLPATH IDENTIFICATION			
Operator	KERR-MCGEE OIL & GAS ONSHORE LP	Slot	SLOT#25 THOMASON 27N-E9HZ (294' FSL & 318' FEL, SEC.9)
Area	COLORADO	Well	THOMASON 27N-E9HZ
Field	WELD COUNTY (KERR MCGEE)	Wellbore	THOMASON 27N-E9HZ AWB
Facility	SEC.09-T2N-R65W		

WELLPATH COMMENTS				
MD [ft]	Inclination [°]	Azimuth [°]	TVD [ft]	Comment
16.00	0.000	219.050	16.00	Tie-On
116.00	0.200	219.050	116.00	Begin GYRO Surveys
895.00	0.080	299.900	894.99	Tie-Into GYRO Surveys
973.00	0.290	288.360	972.99	Begin BHI MWD Surveys
7342.00	88.434	359.374	6987.97	7" Casing Point
11484.00	90.670	0.570	6953.66	Last BHI MWD Survey
11549.00	90.670	0.570	6952.90	Projection to Bit