

---

**NOBLE ENERGY INC E-BUSINESS**

---

**Darling 6-27 EG  
WATTENBERG  
Weld County , Colorado**

**Recement Service  
26-Nov-2012**

**Job Site Documents**

## The Road to Excellence Starts with Safety

Sold To #: 345242		Ship To #: 2965478		Quote #:		Sales Order #: 900022552	
Customer: NOBLE ENERGY INC E-BUSINESS				Customer Rep: Swift, Carl			
Well Name: Darling			Well #: 6-27 EG			API/UWI #:	
Field: WATTENBERG		City (SAP): GREELEY		County/Parish: Weld		State: Colorado	
Contractor: Leed			Rig/Platform Name/Num: Leed 715				
Job Purpose: Recement Service							
Well Type: Development Well			Job Type: Recement Service				
Sales Person: AARON, WESLEY			Srv Supervisor: BULINSKI, MATTHEW			MBU ID Emp #: 483865	

## Job Personnel

HES Emp Name	Exp Hrs	Emp #	HES Emp Name	Exp Hrs	Emp #	HES Emp Name	Exp Hrs	Emp #
BULINSKI, MATTHEW J	0.0	483865	IPSON, TIMOTHY J	0.0	485018	MARKOVICH, STEVEN Michael	0.0	502964
RICHEY, JESSICA L	0.0	525703	WHEELER, JUSTIN W	0.0	196470			

## Equipment

HES Unit #	Distance-1 way	HES Unit #	Distance-1 way	HES Unit #	Distance-1 way	HES Unit #	Distance-1 way
10822531C	100 mile	10972458	100 mile	11019275C	100 mile	11398490	100 mile
11605598	100 mile	11633848	100 mile				

## Job Hours

Date	On Location Hours	Operating Hours	Date	On Location Hours	Operating Hours	Date	On Location Hours	Operating Hours
11-26-12	5.5	3						
TOTAL			Total is the sum of each column separately					

## Job

## Job Times

Formation Name	Top	Bottom	Called Out	Date	Time	Time Zone
Formation Depth (MD)			26 - Nov - 2012	05:00	MST	
Form Type	BHST		On Location	26 - Nov - 2012	09:00	MST
Job depth MD	4288	Job Depth TVD	Job Started	26 - Nov - 2012	10:03	MST
Water Depth		Wk Ht Above Floor	Job Completed	26 - Nov - 2012	13:49	MST
Perforation Depth (MD)	From	To	Departed Loc	26 - Nov - 2012	14:30	MST

## Well Data

Description	New / Used	Max pressure psig	Size in	ID in	Weight lbm/ft	Thread	Grade	Top MD ft	Bottom MD ft	Top TVD ft	Bottom TVD ft
9" Open Hole				9.				3250	4288		
4 1/2" Production Casing	Unknown		4.5	4.	11.6				4288		4288.
Surface Casing	Used		8.625	8.097	24.		J-55		720		720
1 1/4" tubing	Used		1.25	.671	3.02		P-105		4288		4288

## Tools and Accessories

Type	Size	Qty	Make	Depth	Type	Size	Qty	Make	Depth	Type	Size	Qty	Make
Guide Shoe					Packer					Top Plug			
Float Shoe					Bridge Plug					Bottom Plug			
Float Collar					Retainer					SSR plug set			
Insert Float										Plug Container			
Stage Tool										Centralizers			

## Miscellaneous Materials

Gelling Agt	Conc	Surfactant	Conc	Acid Type	Qty	Conc	%
Treatment Fld	Conc	Inhibitor	Conc	Sand Type	Size	Qty	

## Fluid Data

Stage/Plug #: 1

Fluid #	Stage Type	Fluid Name	Qty	Qty uom	Mixing Density lbm/gal	Yield ft <sup>3</sup> /sk	Mix Fluid Gal/sk	Rate bbl/min	Total Mix Fluid Gal/sk
1	13.5 FracCem	FRACCEM (TM) SYSTEM (452963)	305.0	sacks	13.5	1.48	7.07		7.07
	5 lbm	ENHANCER 923, BULK (101894003)							
	0.2 %	ECONOLITE (100001580)							
	3 lbm	SILICALITE - COMPACTED, 50 LB SK (100012223)							
	0.2 %	FE-2 (100001615)							
	0.2 %	HALAD(R)-344, 50 LB (100003670)							
	7.07 Gal	FRESH WATER							
2	15.8# Cement	CMT - PREMIUM - CLASS G, 94 LB SK (100003685)	300.0	sacks	15.8	1.15	4.99		4.99
	94 lbm	CMT - PREMIUM - CLASS G REG OR TYPE V, BULK (100003685)							
	4.989 Gal	FRESH WATER							
<b>Calculated Values</b>		<b>Pressures</b>		<b>Volumes</b>					
Displacement	5.5	Shut In: Instant		Lost Returns	0	Cement Slurry	141.5	Pad	
Top Of Cement		5 Min		Cement Returns	7	Actual Displacement	5.5	Treatment	
Frac Gradient		15 Min		Spacers	16	Load and Breakdown		Total Job	156
<b>Rates</b>									
Circulating	1.5	Mixing	1.5	Displacement	1.5	Avg. Job			1.5
Cement Left In Pipe	Amount	0 ft	Reason	Shoe Joint					
Frac Ring # 1 @	ID	Frac ring # 2 @	ID	Frac Ring # 3 @	ID	Frac Ring # 4 @	ID		
The Information Stated Herein Is Correct				Customer Representative Signature					

## The Road to Excellence Starts with Safety

Sold To #: 345242		Ship To #: 2965478		Quote #:		Sales Order #: 900022552	
Customer: NOBLE ENERGY INC E-BUSINESS				Customer Rep: Swift, Carl			
Well Name: Darling			Well #: 6-27 EG			API/UWI #:	
Field: WATTENBERG		City (SAP): GREELEY		County/Parish: Weld			State: Colorado
Legal Description:							
Lat:				Long:			
Contractor: Leed			Rig/Platform Name/Num: Leed 715				
Job Purpose: Recement Service						Ticket Amount:	
Well Type: Development Well			Job Type: Recement Service				
Sales Person: AARON, WESLEY			Srv Supervisor: BULINSKI, MATTHEW			MBU ID Emp #: 483865	

Activity Description	Date/Time	Cht #	Rate bbl/ min	Volume bbl		Pressure psig		Comments
				Stage	Total	Tubing	Casing	
Arrive at Location from Service Center	11/26/2012 09:00							WATER PROVIDED BY CUSTOMER, TESTED OK FOR MIXING CMT
Assessment Of Location Safety Meeting	11/26/2012 09:05							HAZARD HUNT BEFORE SPOTTING IN TRUCKS
Safety Meeting - Pre Rig-Up	11/26/2012 09:07							PRE RIG UP MEETING ON RIGGING TRUCKS AND IRON
Start Job	11/26/2012 10:03							1 1/4 TUBING SET AT 4288FT
Test Lines	11/26/2012 10:04		0.5			4703.0		4500PSI PRESSURE TEST
Establish Rate	11/26/2012 10:07		1.3			1987.0		10BBSL AHEAD TO SEE INJECTION RATE AND CATCH RETURNS
Pump Cement	11/26/2012 10:14		1.7	83		2897.0		305SKS FRACCEM MIXED AT 13.5PPG DENSITY VERIFY BY PRESSURIZED SCALES
Pump Displacement	11/26/2012 11:04		1.7	5	88	3008.0		5BBSL DISPLACEMENT
Shutdown	11/26/2012 11:07							SHUTDOWN FOR 1 HR & 45MINS WHILE RIG HANDS PULL STANDS TO 720FT
Pump Spacer 1	11/26/2012 13:04		1	6	94	156.0		6 BBSL WATER AHEAD TO GET RETURNS
Activity Description	Date/Time	Cht #	Rate bbl/ min	Volume bbl		Pressure psig		Comments
				Stage	Total	Tubing	Casing	

# HALLIBURTON

## *Cementing Job Log*

Pump Cement	11/26/2012 13:14		1.5	61.5	155.5	758.0		MIXED AND PUMPED 300SKS CLASS G PREMIUM 15.8 DENSITY VERIFY BY PRESSURIZED SCALES
Cement Returns to Surface	11/26/2012 13:43					891.0		54BBLs AWAY CMT TO SURFACE
Pump Displacement	11/26/2012 13:44		1	0.5	156	892.0		.5BBL DISPLACE LINE
Shutdown	11/26/2012 13:45							RIG DOWN SAFETY HUDDLE
End Job	11/26/2012 13:49							

Sold To # : 345242

Ship To # : 2965478

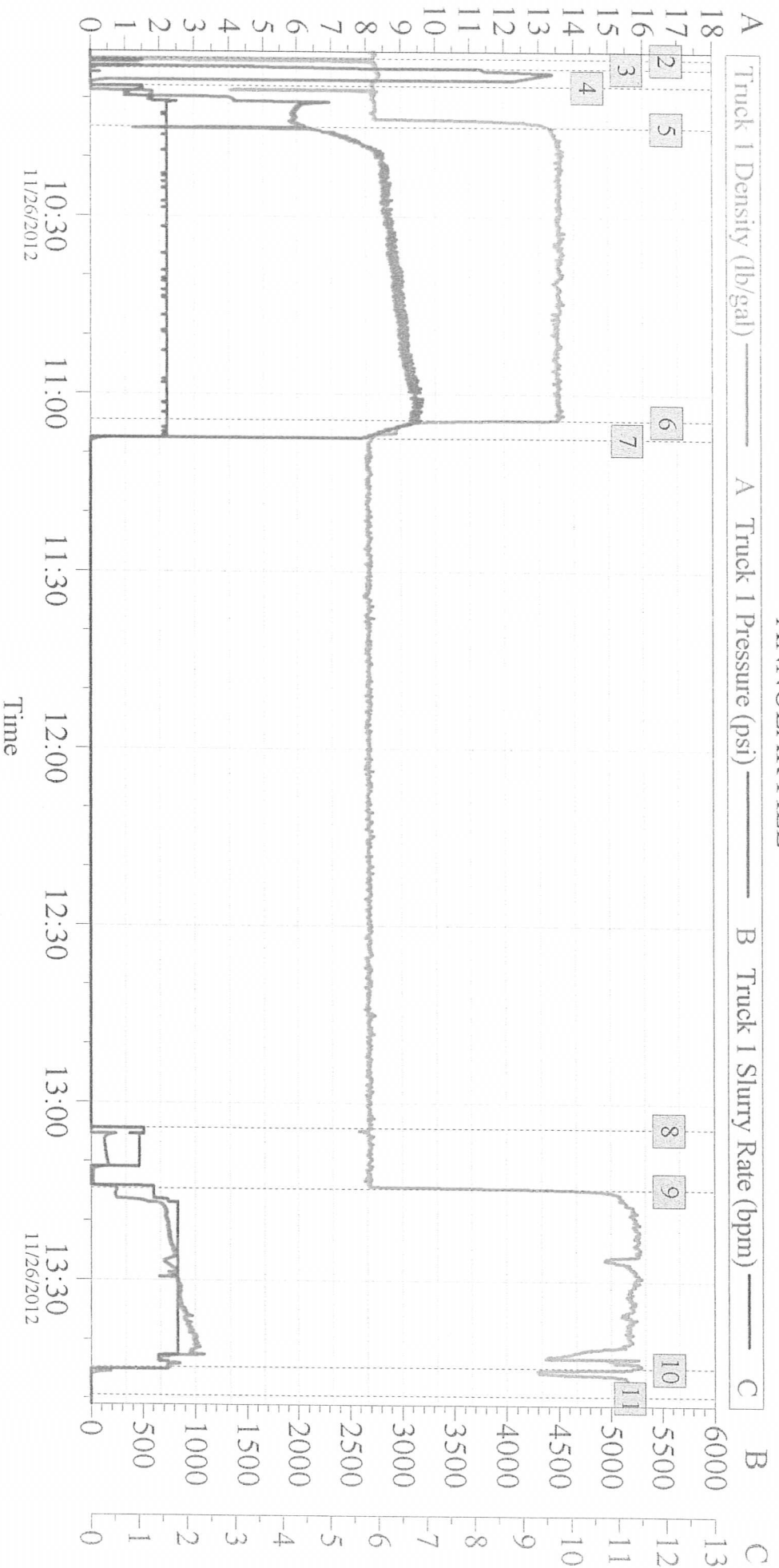
Quote # :

Sales Order # : 900022552

SUMMIT Version: 7.3.0045

Monday, November 26, 2012 02:09:00

# NOBLE DARLING 6-27EG ANNULAR FILL



## Global Event Log

2	Start Job	10:03:11	3	Test Lines	10:04:48
4	Pump to see injection rate & returns	10:07:52	5	Pump Cement	10:14:50
6	Pump Displacement	11:04:26	7	Shutdown	11:07:33
8	Pump for circulation	13:04:15	9	Pump Cement	13:14:28
10	Pump Displacement	13:44:41	11	End Job	13:49:28