

**HALLIBURTON**

---

**NOBLE ENERGY INC E-BUSINESS**

---

**Moser Farms 4-2  
Wattenberg  
Weld County , Colorado**

**Recement Service**  
**13-Dec-2012**

**Job Site Documents**

# HALLIBURTON

## Cementing Job Summary

*The Road to Excellence Starts with Safety*

Sold To #: 345242	Ship To #: 2969130	Quote #:	Sales Order #: 900070125
Customer: NOBLE ENERGY INC E-BUSINESS		Customer Rep: Swift, Carl	
Well Name: Moser Farms	Well #: 4-2	API/UWI #: 05-123-14869	
Field: Wattenberg	City (SAP): HUDSON	County/Parish: Weld	State: Colorado
Lat: N 40.166 deg. OR N 40 deg. 9 min. 58.565 secs.		Long: W 104.661 deg. OR W -105 deg. 20 min. 20.526 secs.	
Contractor: Leed	Rig/Platform Name/Num:		
Job Purpose: Recement Service			
Well Type: Development Well	Job Type: Recement Service		
Sales Person: AARON, WESLEY	Srvc Supervisor: BULINSKI, MATTHEW	MBU ID Emp #: 483865	

### Job Personnel

HES Emp Name	Exp Hrs	Emp #	HES Emp Name	Exp Hrs	Emp #	HES Emp Name	Exp Hrs	Emp #
BOURGEOIS, KEVIN Paul	6	459092	BULINSKI, MATTHEW J	6	483865	IPSON, TIMOTHY J	6	485018
MARKOVICH, STEVEN Michael	6	502964						

### Equipment

HES Unit #	Distance-1 way	HES Unit #	Distance-1 way	HES Unit #	Distance-1 way	HES Unit #	Distance-1 way
11036298	18 mile	11362287C	18 mile	11532299	18 mile	11605598	18 mile
11764052	18 mile						

### Job Hours

Date	On Location Hours	Operating Hours	Date	On Location Hours	Operating Hours	Date	On Location Hours	Operating Hours
12-13-12	6	2.5						

TOTAL Total is the sum of each column separately

### Job

Formation Name	Formation Depth (MD)	Top	Bottom	Form Type	Job depth MD	Job Depth TVD	Water Depth	Perforation Depth (MD)	From	To
				BHST	4633. ft	4633. ft				

### Job Times

Date	Time	Time Zone
13 - Dec - 2012	04:00	MST
13 - Dec - 2012	08:00	MST
13 - Dec - 2012	09:49	MST
13 - Dec - 2012	12:55	MST
13 - Dec - 2012	13:45	MST

### Well Data

Description	New / Used	Max pressure psig	Size in	ID in	Weight lbm/ft	Thread	Grade	Top MD ft	Bottom MD ft	Top TVD ft	Bottom TVD ft
10" Open Hole				9.				496.	4607.		
4 1/2" Production Casing	Unknown		4.5	4.	11.6				4633.		4633.
Surface Casing	Used		8.625	8.097	24.		J-55		496.		496.
1 1/4" tubing	Used		1.25	.671	3.02		P-105		4633.		4633.

### Tools and Accessories

Type	Size	Qty	Make	Depth	Type	Size	Qty	Make	Depth	Type	Size	Qty	Make
Guide Shoe					Packer					Top Plug			
Float Shoe					Bridge Plug					Bottom Plug			
Float Collar					Retainer					SSR plug set			
Insert Float										Plug Container			
Stage Tool										Centralizers			

### Miscellaneous Materials

Gelling Agt	Conc	Surfactant	Conc	Acid Type	Qty	Conc	%
Treatment Fld	Conc	Inhibitor	Conc	Sand Type	Size	Qty	

### Fluid Data

Stage/Plug #: 1

Summit Version: 7.3.0045

Thursday, December 13, 2012 13:16:00

# HALLIBURTON

## Cementing Job Summary

Fluid #	Stage Type	Fluid Name	Qty	Qty uom	Mixing Density lbm/gal	Yield ft <sup>3</sup> /sk	Mix Fluid Gal/sk	Rate bbl/min	Total Mix Fluid Gal/sk
1	13.5 FracCem	FRACCEM (TM) SYSTEM (452963)	220.0	sacks	13.5	1.48	7.07		7.07
	5 lbm	ENHANCER 923, BULK (101894003)							
	0.2 %	ECONOLITE (100001580)							
	3 lbm	SILICALITE - COMPACTED, 50 LB SK (100012223)							
	0.2 %	FE-2 (100001615)							
	0.2 %	HALAD(R)-344, 50 LB (100003670)							
	7.07 Gal	FRESH WATER							
2	15.8# Cement	CMT - PREMIUM - CLASS G, 94 LB SK (100003685)	300.0	sacks	15.8	1.15	4.99		4.99
	94 lbm	CMT - PREMIUM - CLASS G REG OR TYPE V, BULK (100003685)							
	4.989 Gal	FRESH WATER							
Calculated Values		Pressures		Volumes					
Displacement	7	Shut In: Instant		Lost Returns	0	Cement Slurry	119	Pad	
Top Of Cement		5 Min		Cement Returns	11	Actual Displacement	7	Treatment	
Frac Gradient		15 Min		Spacers	21	Load and Breakdown		Total Job	147.5
Rates									
Circulating	1.5	Mixing	1.5	Displacement	1.5	Avg. Job	1.5		
Cement Left In Pipe	Amount	0 ft	Reason						
Frac Ring # 1 @	ID	Frac ring # 2 @	ID	Frac Ring # 3 @	ID	Frac Ring # 4 @	ID		
The Information Stated Herein Is Correct				Customer Representative Signature					

# HALLIBURTON

## Cementing Job Log

*The Road to Excellence Starts with Safety*

Sold To #: 345242	Ship To #: 2969130	Quote #:	Sales Order #: 900070125
Customer: NOBLE ENERGY INC E-BUSINESS		Customer Rep: Swift, Carl	
Well Name: Moser Farms	Well #: 4-2	API/UWI #: 05-123-14869	
Field: Wattenberg	City (SAP): HUDSON	County/Parish: Weld	State: Colorado
Legal Description:			
Lat: N 40.166 deg. OR N 40 deg. 9 min. 58.565 secs.		Long: W 104.661 deg. OR W -105 deg. 20 min. 20.526 secs.	
Contractor: Leed		Rig/Platform Name/Num:	
Job Purpose: Recement Service			Ticket Amount:
Well Type: Development Well		Job Type: Recement Service	
Sales Person: AARON, WESLEY		Srv Supervisor: BULINSKI, MATTHEW	
		MBU ID Emp #: 483865	

Activity Description	Date/Time	Cht #	Rate bbl/min	Volume bbl		Pressure psig		Comments
				Stage	Total	Tubing	Casing	
Arrive at Location from Service Center	12/13/2012 08:00							Water ordered by company man; delivered by water truck
Assessment Of Location Safety Meeting	12/13/2012 08:05							Harzard hunt on location before spotting in trucks
Start Job	12/13/2012 09:49							
Test Lines	12/13/2012 09:50							3500psi Pressure test lines to rig floor
Pump Spacer 1	12/13/2012 09:52		1.5	10		1330.0		Pump H2Ospacer ahead to see returns to surface and see injection rater
Pump Cement	12/13/2012 10:02		1.5	58	68	2303.0		220sks FracCem mixed at 13.5ppg verify by Pressurized Mud Scales
Pump Displacement	12/13/2012 10:46		1.5	6	74	2298.0		6bbbls displacment to clear tubing
Shutdown	12/13/2012 10:50							
Other	12/13/2012 10:56							Rig hands pull pipe up to 845ft leaving 27 stands in hole
Pump Spacer 1	12/13/2012 12:14		1.5	11	85	341.0		Pump H2Ospacer ahead to see returns
Pump Cement	12/13/2012 12:27		2	61.5	146.5	1250.0		300sks Premium G mixed at 15.8ppg verify by Pressurized Mud Scales
Cement Returns to Surface	12/13/2012 12:52					1215.0		cmt to surface at 50bbbls finished pumping 11bbbls
Pump Displacement	12/13/2012 12:55		1.5	1	147.5	1246.0		1bbl displacment to clear lines
Safety Meeting - Pre Rig-Down	12/13/2012 13:05							

Sold To # : 345242

Ship To # :2969130

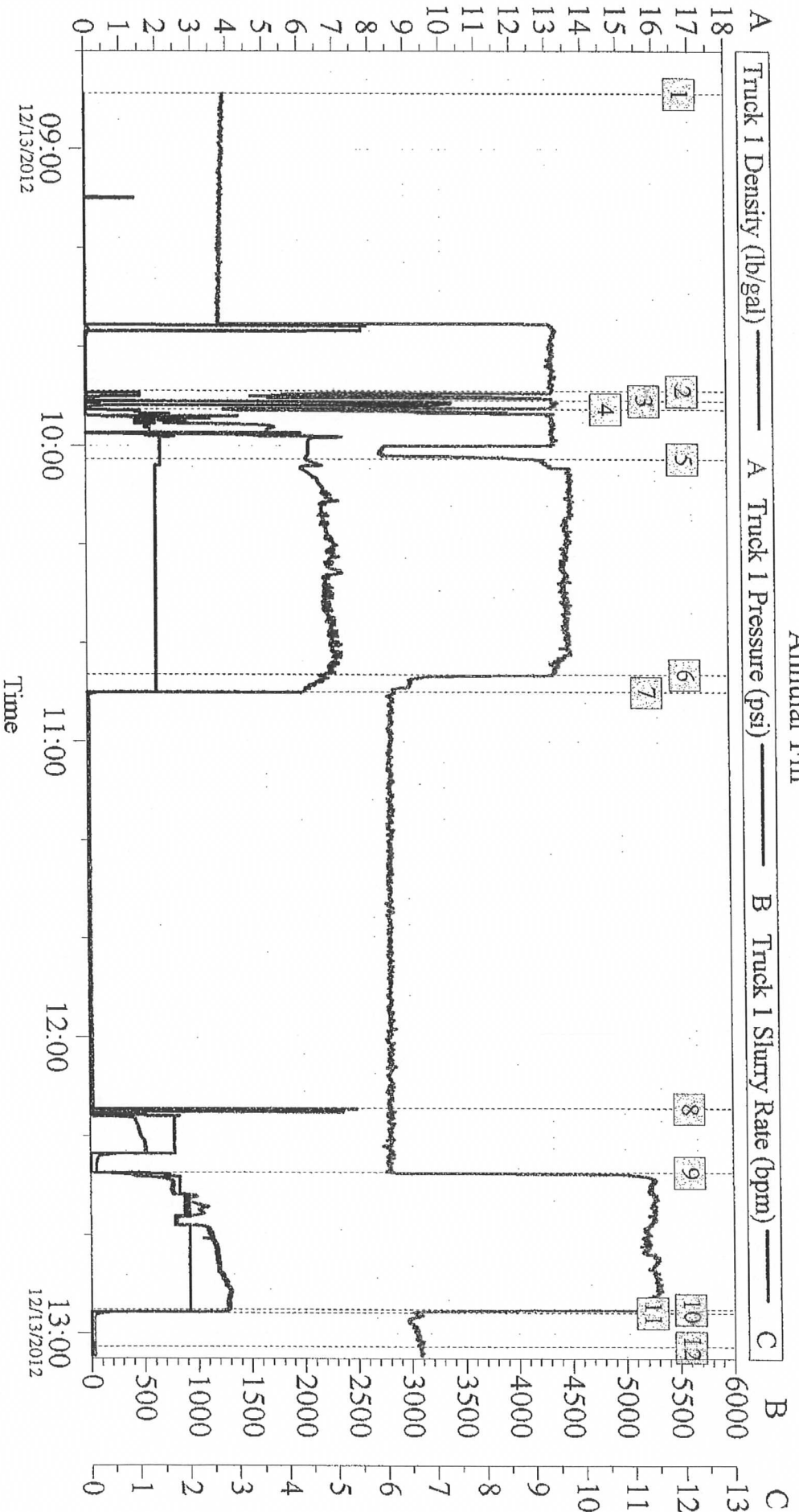
Quote # :

Sales Order # : 900070125

SUMMIT Version: 7.3.0045

Thursday, December 13, 2012 01:16:00

# Noble Moser Farms 4-2 Annular Fill



## Global Event Log

1 Starting Job	08:48:43	2 Start Job	09:49:00	3 Test Lines	09:50:59
4 Pump Spacer 1	09:52:45	5 Pump Cement	10:02:47	6 Pump Displacement	10:46:24
7 Shutdown	10:50:01	8 Pump Spacer 1	12:14:27	9 Pump Cement	12:27:21
10 Pump Displacement	12:55:07	11 Shutdown	12:55:52	12 End Job	13:02:45