

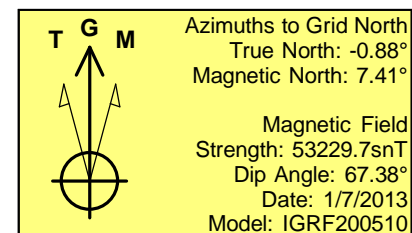
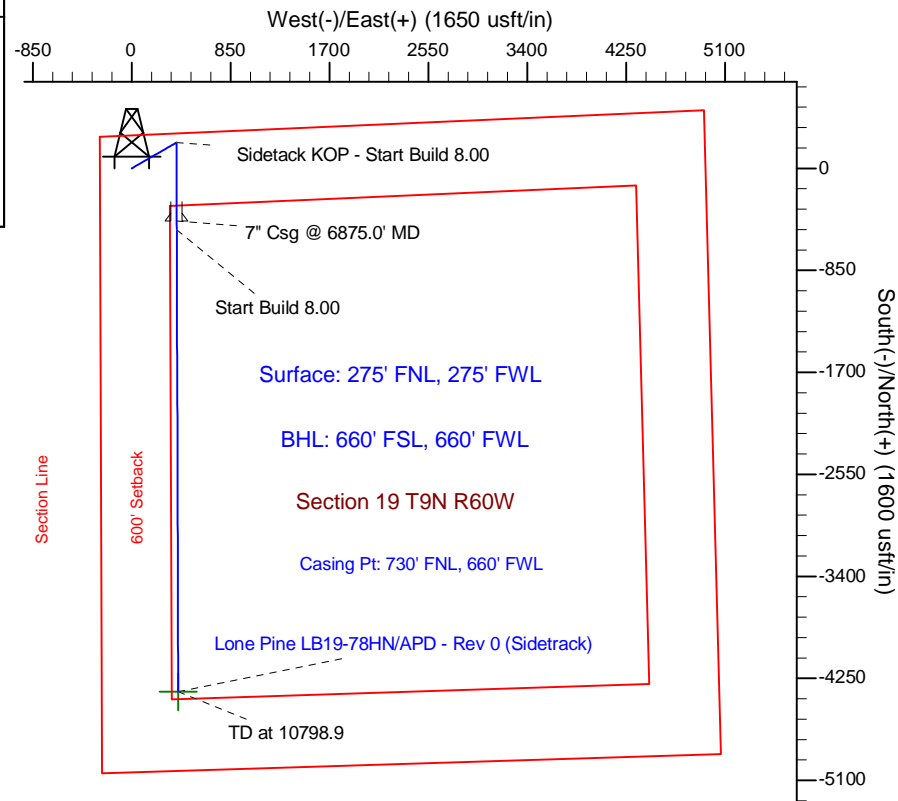
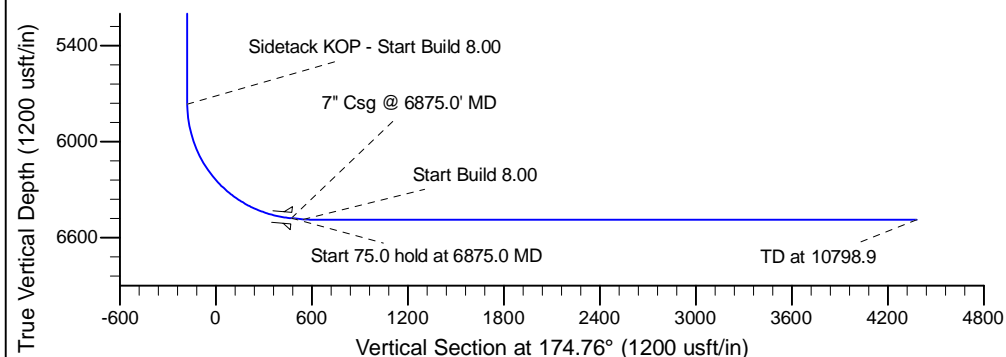
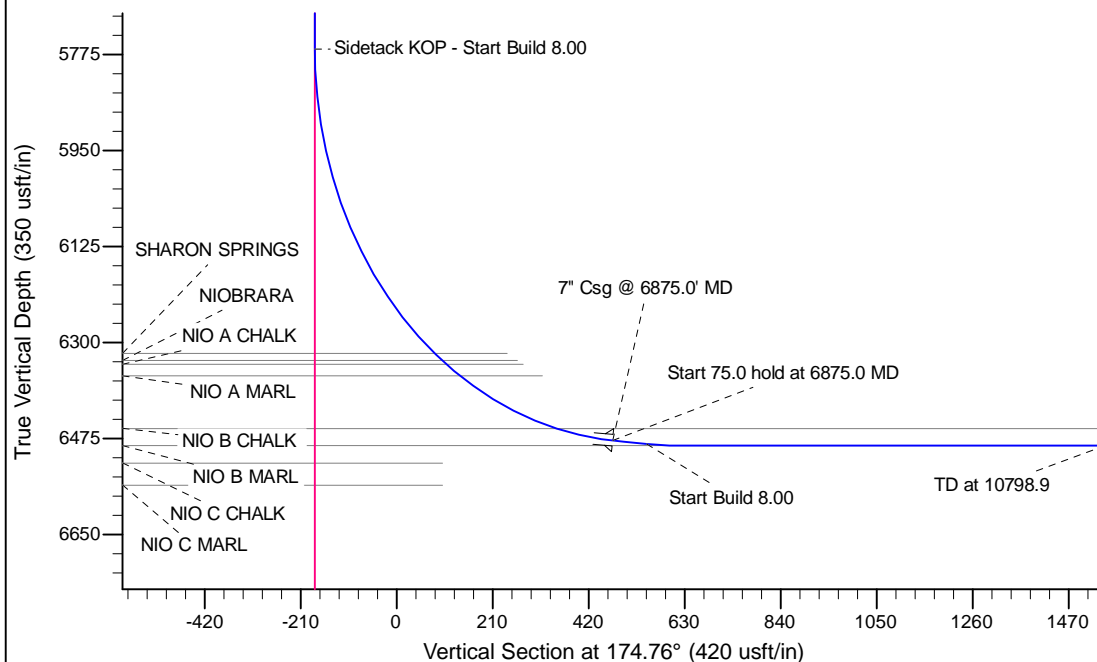
Project: Wattenberg Field  
 Site: LB (Sec.19-T09N-R60W) Weld County, CO  
 Well: Lone Pine LB19-78HN  
 Wellbore: Original Drilling  
 Design: APD - Rev 0 (Sidetrack)

# Northern Region Drilling

Geodetic System: US State Plane 1983  
 Datum: North American Datum 1983  
 Ellipsoid: GRS 1980  
 Zone: Colorado Northern Zone  
 System Datum: Mean Sea Level

## SECTION DETAILS

Sec	MD	Inc	Azi	TVD	+N/-S	+E/-W	Dleg	TFace	VSect	Target
1	0.0	0.00	0.00	0.0	0.0	0.0	0.00	0.00	0.0	
2	2000.0	0.00	0.00	2000.0	0.0	0.0	0.00	0.00	0.0	
3	2701.3	14.03	60.82	2694.3	41.6	74.6	2.00	60.82	-34.7	
4	3815.9	14.03	60.82	3775.7	173.4	310.4	0.00	0.00	-144.3	
5	4517.2	0.00	0.00	4470.0	215.0	385.0	2.00	180.00	-178.9	
6	5812.5	0.00	0.00	5765.3	215.0	385.0	0.00	0.00	-178.9	
7	6875.0	85.00	179.81	6478.7	-438.8	387.2	8.00	179.81	472.3	
8	6950.0	85.00	179.81	6485.3	-513.5	387.4	0.00	0.00	546.7	
9	7012.5	90.00	179.81	6488.0	-575.9	387.6	8.00	0.00	608.9	
10	10798.9	90.00	179.81	6488.0	-4362.4	400.1	0.00	0.00	4380.7	Lone Pine LB19-78HN BHL 660'FSL, 660'FWL



WELL DETAILS: Lone Pine LB19-78HN			
Ground Level:	4970.0	Latitude	40.741064
Northing	1515683.88	Easting	3375522.84
Longitude	-104.144803		
Plan: APD - Rev 0 (Sidetrack) (Lone Pine LB19-78HN/Original Drilling)			
Created By: Carrie Wilers	Date: 13:34, February 15 2013		
Checked: _____	Date: _____		
Reviewed: _____	Date: _____		
Approved: _____	Date: _____		