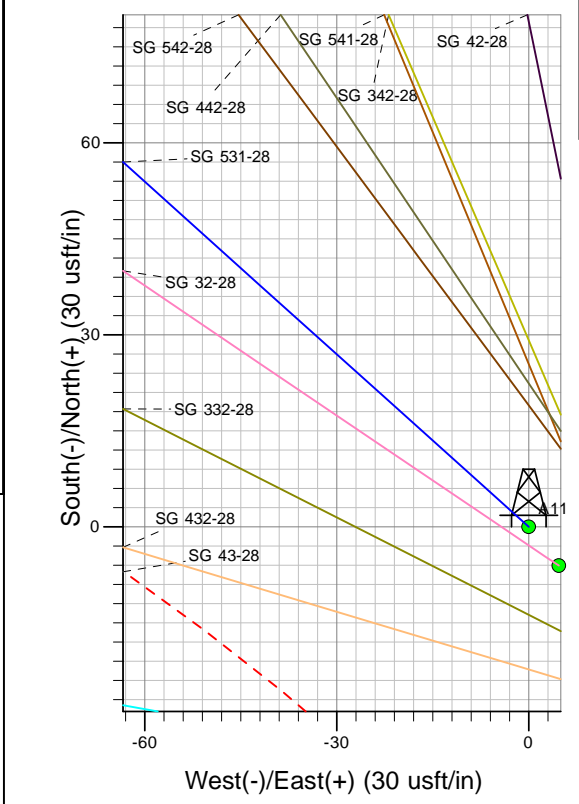
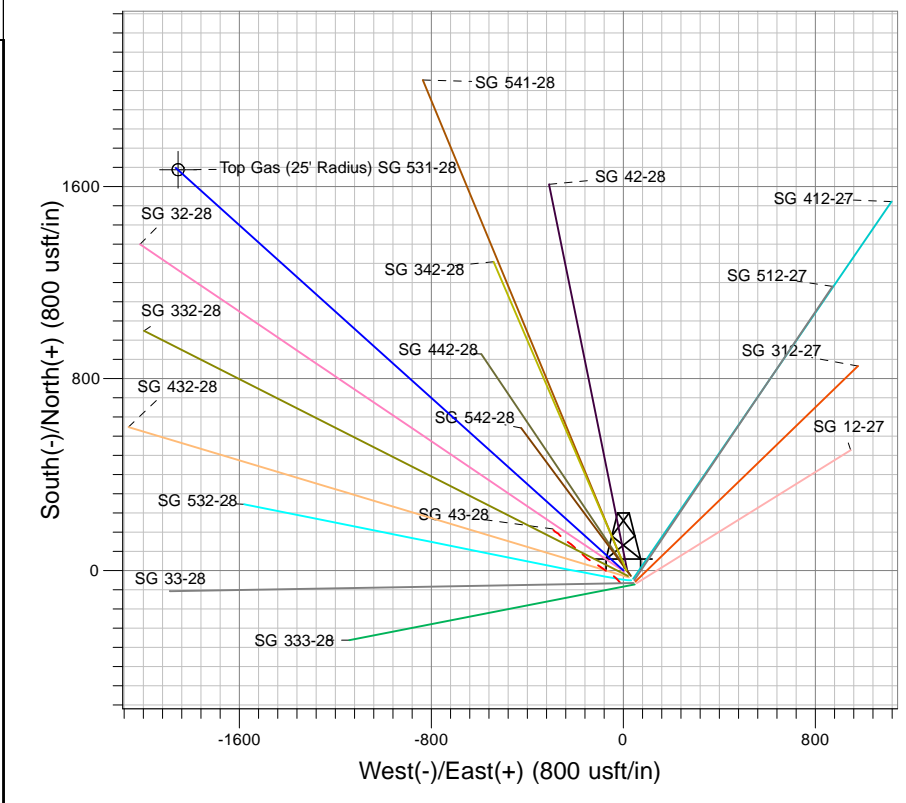
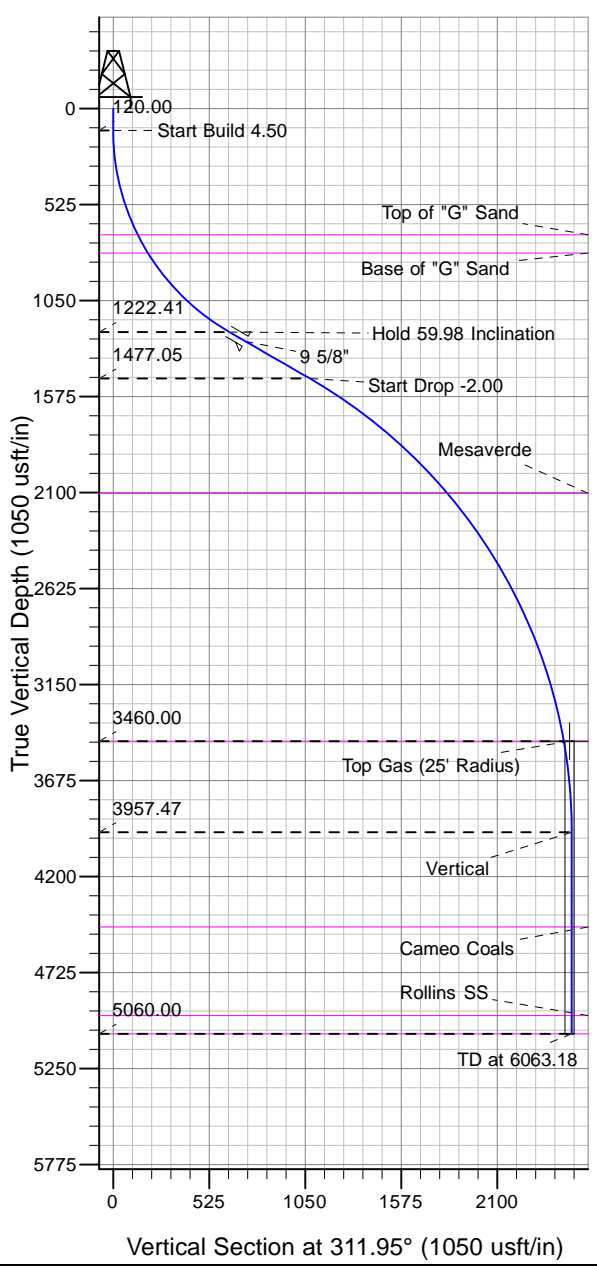




Well Name: SG 531-28  
 Surface Location: SG 43-28 Pad  
 North American Datum 1983 , US State Plane 1983, Colorado Central Zone  
 Ground Elevation: 5119.00  
 +N/-S 0.00    +E/-W 0.00    Northing 1583890.17    Easting 2263430.24    Latitude 39.40752    Longitude -108.10717    Slot A 11  
 KELLY BUSHING @ 5145.00usft (Nabors 573 (26' RKB) kjs)



Project: SG 28-07S-096W  
 Site: SG 43-28 Pad  
 Well: SG 531-28  
 Design #2 16Jan13 kjs

**T M**  
 Azimuths to True North  
 Magnetic North: 10.27°  
 Magnetic Field  
 Strength: 52097.4snT  
 Dip Angle: 65.62°  
 Date: 5/30/2012  
 Model: IGRF2010

ANNOTATIONS

MD	Inc	Azi	TVD	+N/-S	+E/-W	VSect	Departure	Annotation
120.00	0.00	0.00	120.00	0.00	0.00	0.00	0.00	Start Build 4.50
1452.84	59.98	311.95	1222.41	425.24	-473.19	636.19	636.19	Hold 59.98 Inclination
1961.76	59.98	311.95	1477.05	719.78	-800.93	1076.83	1076.83	Start Drop -2.00
4460.64	10.00	311.95	3460.00	1647.48	-1833.23	2464.74	2464.74	Top Gas
4960.64	0.00	0.00	3957.47	1676.57	-1865.60	2508.26	2508.26	Vertical
6063.18	0.00	0.00	5060.00	1676.57	-1865.60	2508.26	2508.26	TD at 6063.18