

T7S, R96W, 6th P.M.

WPX Energy Rocky Mountain, LLC

Well location, FEDERAL SG 531-28, located as shown in the NE 1/4 SE 1/4 of Section 28, T7S, R96W, 6th P.M., Garfield County, Colorado.

BASIS OF ELEVATION

SPOT ELEVATION AT THE NORTHWEST CORNER OF SECTION 30, T5S, R95W, 6th P.M. TAKEN FROM THE FORKED GULCH QUADRANGLE, COLORADO, GARFIELD COUNTY, 7.5 MINUTE SERIES (TOPOGRAPHICAL MAP) PUBLISHED BY THE UNITED STATES DEPARTMENT OF THE INTERIOR, GEOLOGICAL SURVEY. SAID ELEVATION IS MARKED AS BEING 5966 FEET.

BASIS OF BEARINGS

BASIS OF BEARINGS IS A G.P.S. OBSERVATION.

LINE TABLE		
LINE	DIRECTION	LENGTH
L1	N01°06'05"E	46.30'
L2	N89°52'40"W	509.15'
L3	N88°40'54"W	572.72'
L4	N00°12'56"W	223.00'



SCALE
0 50 100



CERTIFICATE
THIS IS TO CERTIFY THAT THE ABOVE PLAT WAS PREPARED FROM FIELD NOTES OF ACTUAL SURVEYS MADE BY ME OR UNDER MY SUPERVISION AND THAT THE SAME ARE TRUE AND CORRECT TO THE BEST OF MY KNOWLEDGE AND BELIEF.

REVISED: 12-12-12 M.D.

UTIAH ENGINEERING & LAND SURVEYING
 85 SOUTH 200 EAST - VERNAL, UTAH 84078
 (435) 789-1017

DATE SURVEYED: 02-28-11
 DATE DRAWN: 11-26-12

REFERENCES: G.L.O. PLAT

FILE: WPX ENERGY ROCKY MOUNTAIN, LLC

WEATHER: COLD

PARTY: B.J. R.P. M.D.

SCALE: 1" = 1000'

1920, 1982 Brass Cap, 1.0' High, Pile of Stones
 Lat: 39.415786°
 Long: 108.123806°

1920 Brass Cap, 1.6' High, Brass Cap
 Lat: 39.415778°
 Long: 108.114806°

1920 Brass Cap, 2.2' High
 Lat: 39.415658°
 Long: 108.123808°

1920 Brass Cap, 0.6' High, Pile of Stones
 Lat: 39.412103°
 Long: 108.105528°

1982 Brass Cap, 0.6' High, Pile of Stones
 Lat: 39.408431°
 Long: 108.105367°

1 1/2" Alum. Cap #5 Rebar, Fence Corner
 Lat: 39.404817°
 Long: 108.105206°

2007 Alum. Cap, 1.3' High, Mound of Stones
 Lat: 39.401303°
 Long: 108.114508°

2007 Alum. Cap, 11' High, PLS 27925
 Lat: 39.401303°
 Long: 108.114508°

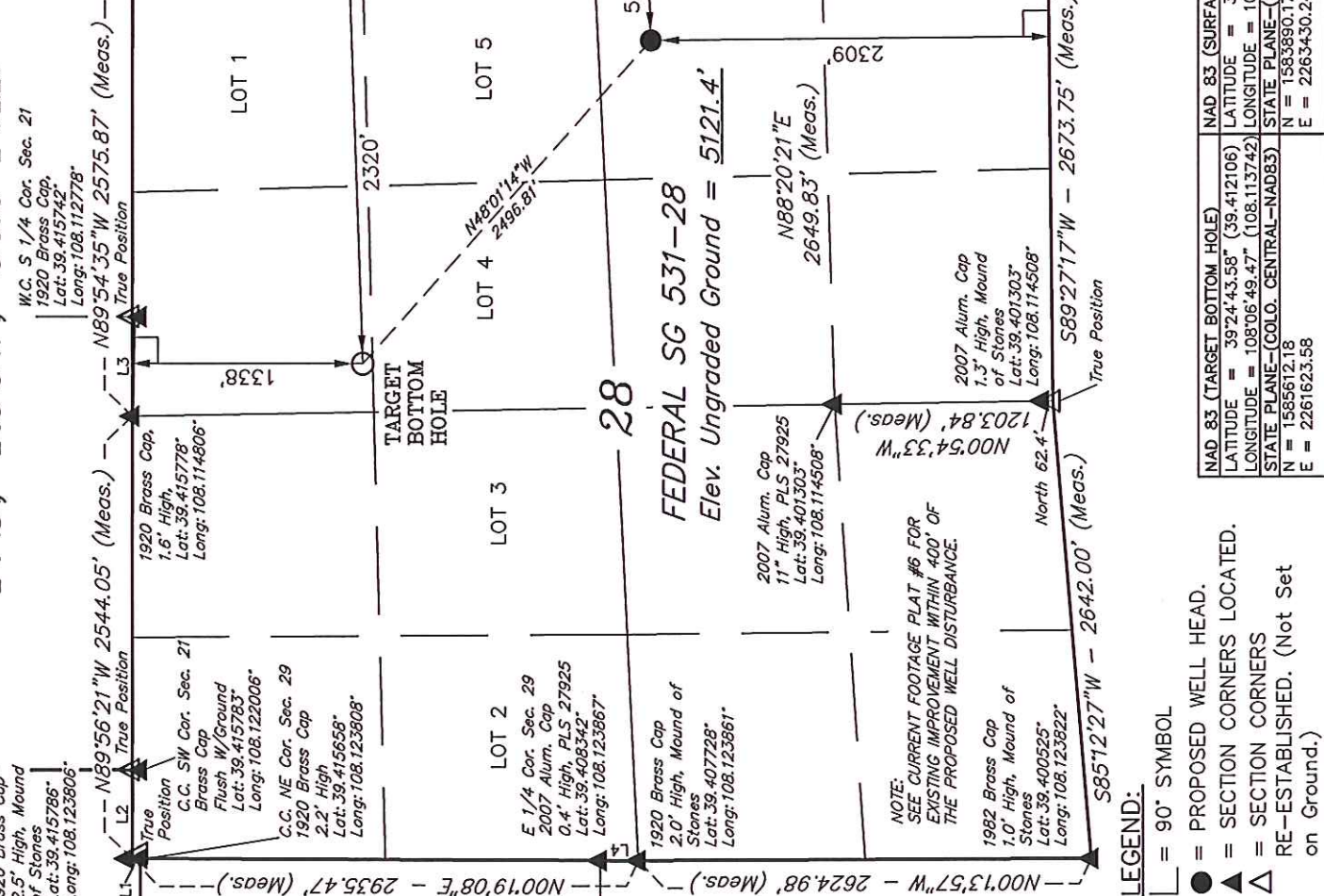
1982 Alum. Cap, 1.4' Deep in Ground Steel Post, E-W Fencing
 Lat: 39.401200°
 Long: 108.105050°

NAD 83 (TARGET BOTTOM HOLE)
 LATITUDE = 39°24'43.58" (39.412106)
 LONGITUDE = 108°06'49.47" (108.113742)
 STATE PLANE-(COLO. CENTRAL-NAD83)
 N = 1585612.18
 E = 2261623.58

NAD 83 (SURFACE LOCATION)
 LATITUDE = 39°24'27.08" (39.407522)
 LONGITUDE = 108°06'25.83" (108.107175)
 STATE PLANE-(COLO. CENTRAL-NAD83)
 N = 1583890.17
 E = 2263430.24

NOTE:
 SEE CURRENT FOOTAGE PLAT #6 FOR EXISTING IMPROVEMENT WITHIN 400' OF THE PROPOSED WELL DISTURBANCE.

LEGEND:
 = 90° SYMBOL
 = PROPOSED WELL HEAD.
 = SECTION CORNERS LOCATED.
 = SECTION CORNERS RE-ESTABLISHED. (Not Set on Ground.)



W.C. S 1/4 Cor. Sec. 21
 1920 Brass Cap,
 Lat: 39.415742°
 Long: 108.112778°

1920 Brass Cap, 1.6' High, Brass Cap
 Lat: 39.415778°
 Long: 108.114806°

1920 Brass Cap, 2.2' High
 Lat: 39.415658°
 Long: 108.123808°

1920 Brass Cap, 0.6' High, Pile of Stones
 Lat: 39.412103°
 Long: 108.105528°

1982 Brass Cap, 0.6' High, Pile of Stones
 Lat: 39.408431°
 Long: 108.105367°

1 1/2" Alum. Cap #5 Rebar, Fence Corner
 Lat: 39.404817°
 Long: 108.105206°

2007 Alum. Cap, 1.3' High, Mound of Stones
 Lat: 39.401303°
 Long: 108.114508°

2007 Alum. Cap, 11' High, PLS 27925
 Lat: 39.401303°
 Long: 108.114508°

1982 Alum. Cap, 1.4' Deep in Ground Steel Post, E-W Fencing
 Lat: 39.401200°
 Long: 108.105050°

NAD 83 (TARGET BOTTOM HOLE)
 LATITUDE = 39°24'43.58" (39.412106)
 LONGITUDE = 108°06'49.47" (108.113742)
 STATE PLANE-(COLO. CENTRAL-NAD83)
 N = 1585612.18
 E = 2261623.58

NAD 83 (SURFACE LOCATION)
 LATITUDE = 39°24'27.08" (39.407522)
 LONGITUDE = 108°06'25.83" (108.107175)
 STATE PLANE-(COLO. CENTRAL-NAD83)
 N = 1583890.17
 E = 2263430.24

NOTE:
 SEE CURRENT FOOTAGE PLAT #6 FOR EXISTING IMPROVEMENT WITHIN 400' OF THE PROPOSED WELL DISTURBANCE.

LEGEND:
 = 90° SYMBOL
 = PROPOSED WELL HEAD.
 = SECTION CORNERS LOCATED.
 = SECTION CORNERS RE-ESTABLISHED. (Not Set on Ground.)

REVISIONS:
 1. 12-12-12 M.D. REVISED PLAT #1