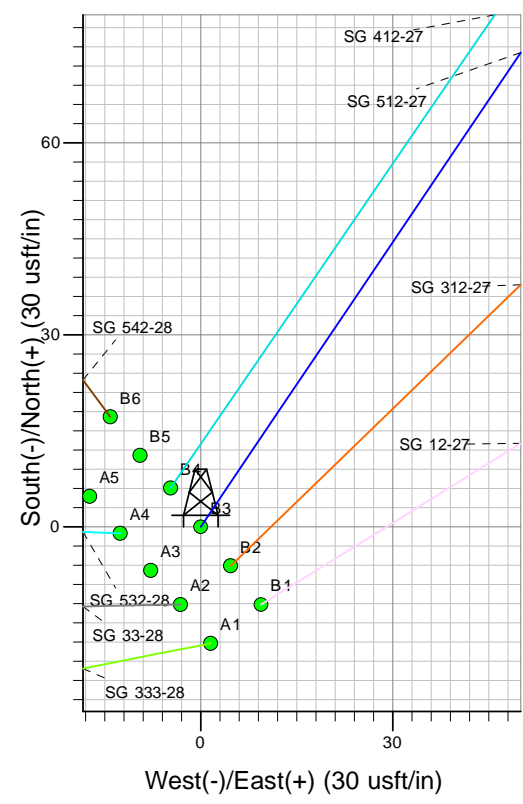
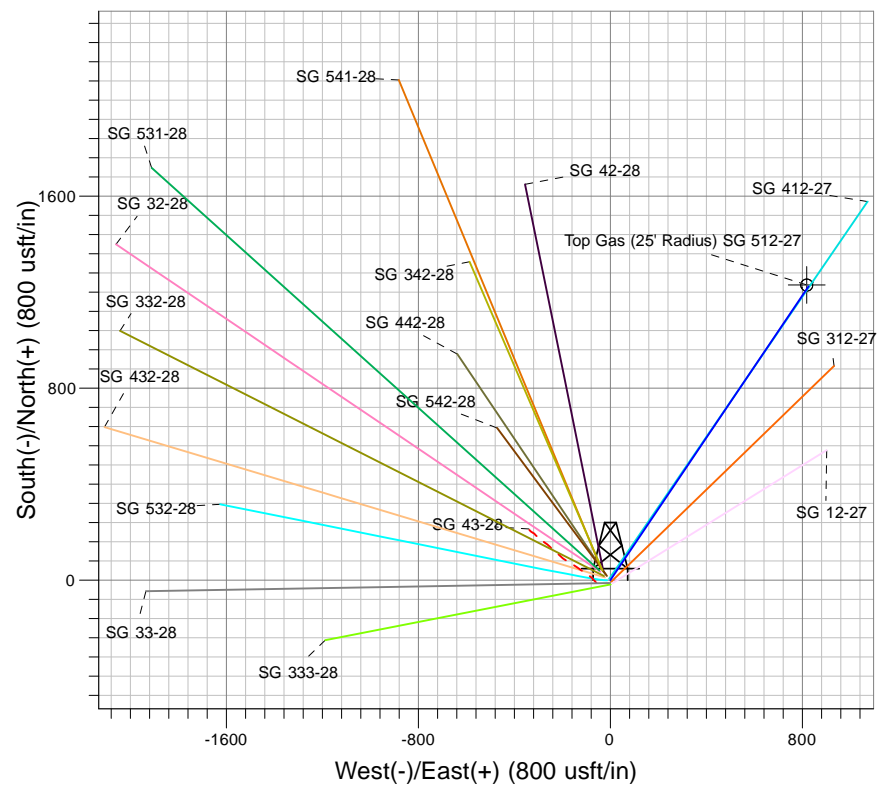
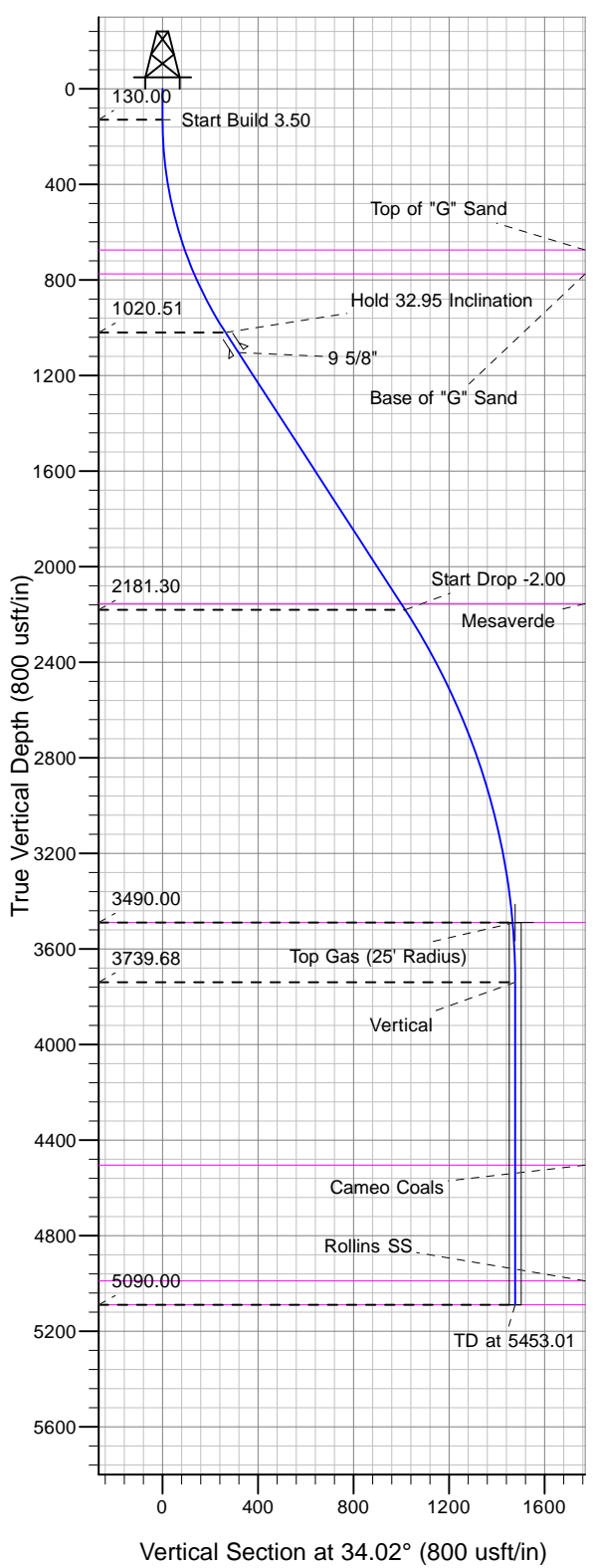




Well Name: SG 512-27  
 Surface Location: SG 43-28 Pad  
 North American Datum 1983, US State Plane 1983, Colorado Central Zone  
 Ground Elevation: 5119.00

+N/-S	+E/-W	Northing	Easting	Latitude	Longitude	Slot
0.00	0.00	1583848.41	2263474.58	39.40741	-108.10701	B3

KELLY BUSHING @ 5145.00usft (Nabors 573 (26' RKB) kjs)



Project: SG 28-07S-096W  
 Site: SG 43-28 Pad  
 Well: SG 512-27  
 Design #2 16Jan13 kjs

**T** Azimuths to True North  
**M** Magnetic North: 10.27°  
 Magnetic Field  
 Strength: 52097.4snT  
 Dip Angle: 65.62°  
 Date: 5/30/2012  
 Model: IGRF2010

ANNOTATIONS

MD	Inc	Azi	TVD	+N/-S	+E/-W	VSect	Departure	Annotation
130.00	0.00	0.00	130.00	0.00	0.00	0.00	0.00	Start Build 3.50
1071.57	32.95	34.02	1020.51	218.32	147.36	263.40	263.40	Hold 32.95 Inclination
2454.95	32.95	34.02	2181.30	842.06	568.37	1015.93	1015.93	Start Drop -2.00
3852.69	5.00	34.02	3490.00	1215.09	820.15	1465.97	1465.97	Top Gas
4102.69	0.00	0.00	3739.68	1224.12	826.25	1476.88	1476.88	Vertical
5453.01	0.00	0.00	5090.00	1224.12	826.25	1476.88	1476.88	TD at 5453.01