

# WPX Energy Rocky Mountain, LLC

PLAT #2a\_LOCATION LAYOUT FOR SG 43-28  
SECTION 28, T7S, R96W, 6th P.M.

SCALE: 1" = 50'

DATE: 03-01-11

DRAWN BY: C.H.

REV: 03-19-12 C.A.G.

REV: 04-02-12 C.A.G.

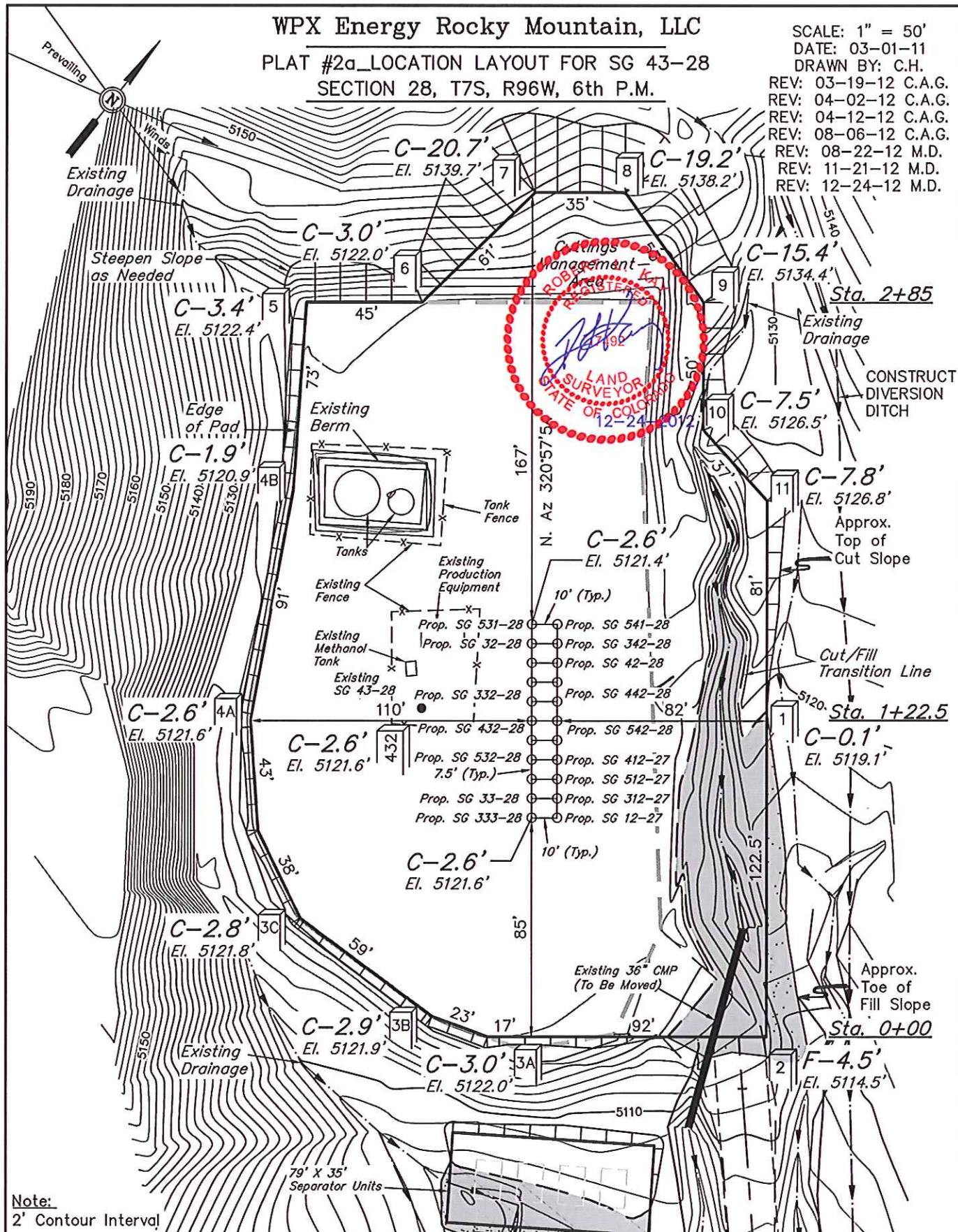
REV: 04-12-12 C.A.G.

REV: 08-06-12 C.A.G.

REV: 08-22-12 M.D.

REV: 11-21-12 M.D.

REV: 12-24-12 M.D.



## Note:

2' Contour Interval

Elev. Ungraded Ground At 432-28 Loc. Stake = 5121.0'  
FINISHED GRADE ELEV. AT 432-28 LOC. STAKE = 5119.0'

UINTAH ENGINEERING & LAND SURVEYING  
85 So. 200 East \* Vernal, Utah 84078 \* (435) 789-1017



# WPX Energy Rocky Mountain, LLC

PLAT #2b LOCATION LAYOUT FOR SG 43-28  
SECTION 28, T7S, R96W, 6th P.M.

SCALE: 1" = 50'

DATE: 03-01-11

DRAWN BY: C.H.

REV: 03-19-12 C.A.G.

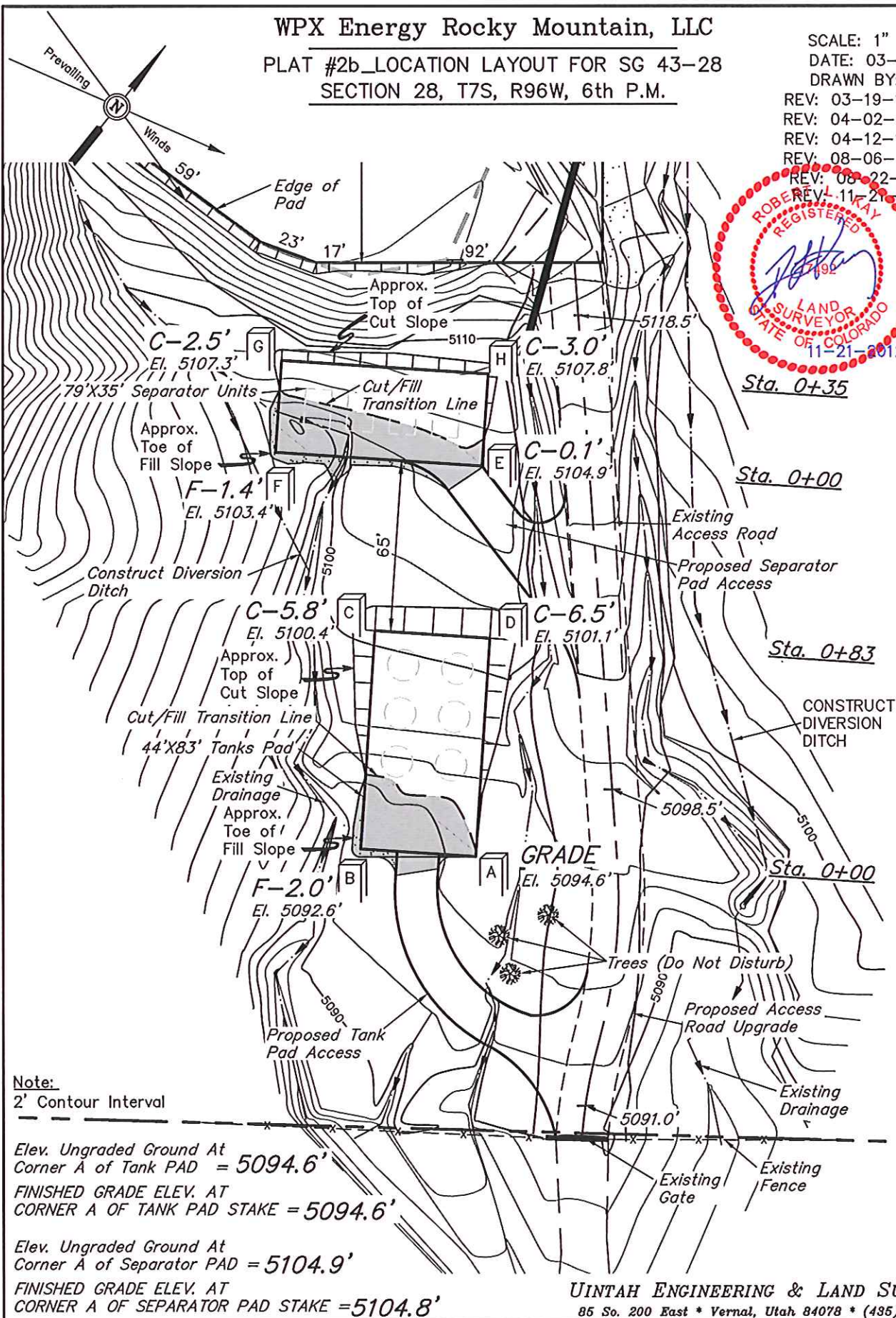
REV: 04-02-12 C.A.G.

REV: 04-12-12 C.A.G.

REV: 08-06-12 C.A.G.

REV: 08-22-12 M.D.

REV: 11-21-12 M.D.



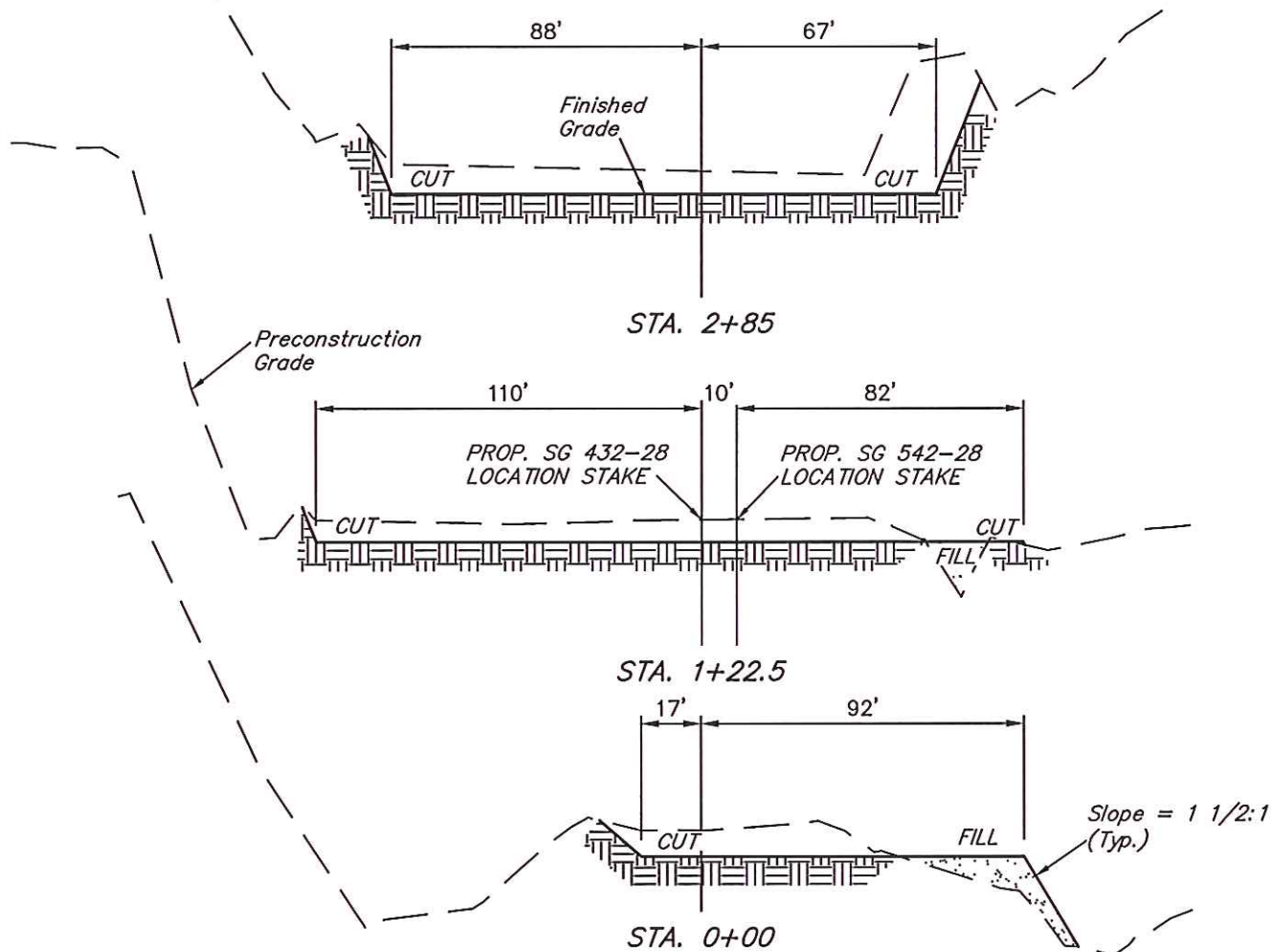
UINTAH ENGINEERING & LAND SURVEYING  
85 So. 200 East \* Vernal, Utah 84078 \* (435) 789-1017

# WPX Energy Rocky Mountain, LLC

PLAT #3a\_TYPICAL CROSS SECTION FOR SG 43-28  
SECTION 28, T7S, R96W, 6th P.M.

1" = 20'  
X-Section  
Scale  
1" = 50'

DATE: 03-19-12  
DRAWN BY: C.A.G.  
REVISED: 04-12-12  
REV: 08-06-12 C.A.G.  
REV: 08-22-12 M.D.  
REV.: 11-21-12 M.D.



## NOTE:

Topsoil should not be Stripped Below Finished Grade on Substructure Area.

\* NOTE:  
FILL QUANTITY INCLUDES  
5% FOR COMPACTION

## APPROXIMATE PAD YARDAGES

(6") Topsoil Stripping = 150 Cu. Yds.  
Remaining Location = 5,210 Cu. Yds.  
TOTAL CUT = 5,360 CU. YDS.  
FILL = 850 CU. YDS.

EXCESS MATERIAL = 4,510 Cu. Yds.  
Topsoil = 150 Cu. Yds.  
EXCESS UNBALANCE = 4,360 Cu. Yds. \*\*  
(After Interim Rehabilitation)

\*\*NOTE:  
EXCESS MATERIAL TO BE USED FOR  
RAMPING ROAD ONTO LOCATION.

UINTAH ENGINEERING & LAND SURVEYING  
85 So. 200 East \* Vernal, Utah 84078 \* (435) 789-1017



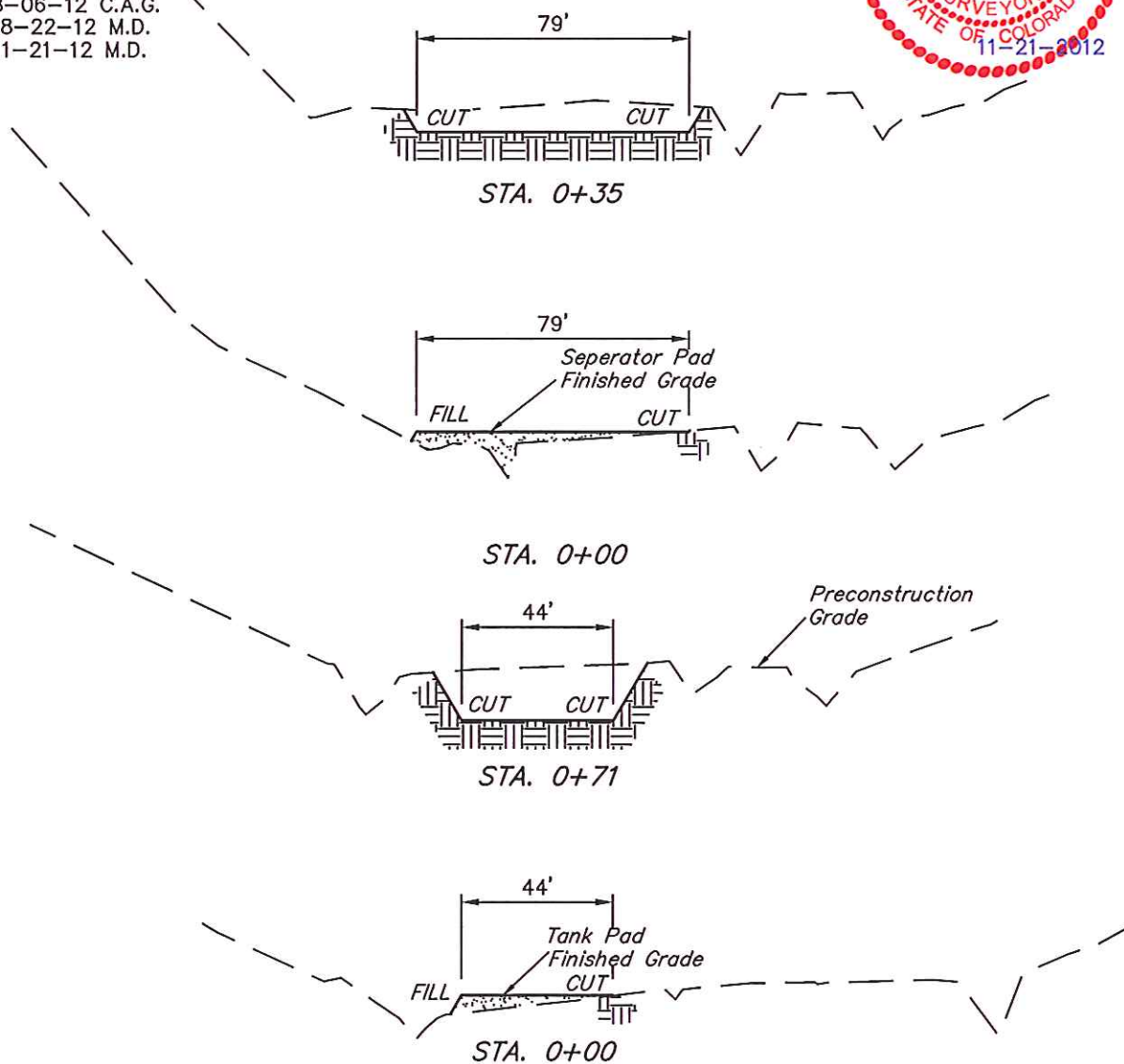
# WPX Energy Rocky Mountain, LLC

PLAT #3b\_TYPICAL CROSS SECTION FOR SG 43-28  
SECTION 28, T7S, R96W, 6th P.M.



1" = 20'  
X-Section  
Scale  
1" = 50'

DATE: 03-19-12  
DRAWN BY: C.A.G.  
REVISED: 04-12-12  
REV: 08-06-12 C.A.G.  
REV: 08-22-12 M.D.  
REV: 11-21-12 M.D.



## NOTE:

Topsoil should not be Stripped Below Finished Grade on Substructure Area.

\* NOTE:  
FILL QUANTITY INCLUDES  
5% FOR COMPACTION

\*\*NOTE:  
EXCESS MATERIAL TO BE USED  
FOR RAMPING ROAD ONTO  
LOCATION.

## APPROXIMATE TANK PAD YARDAGES

(6") Topsoil Stripping = 100 Cu. Yds.  
Remaining Location = 470 Cu. Yds.  
**TOTAL CUT = 570 CU.YDS.**  
**FILL = 30 CU.YDS.**  
EXCESS MATERIAL = 540 Cu. Yds.  
Topsoil = 100 Cu. Yds.  
EXCESS UNBALANCE = 440 Cu. Yds. \*\*  
(After Interim Rehabilitation)

## APPROXIMATE SEPARATOR PAD YARDAGES

(6") Topsoil Stripping = 70 Cu. Yds.  
Remaining Location = 90 Cu. Yds.  
**TOTAL CUT = 160 CU.YDS.**  
**FILL = 90 CU.YDS.**  
EXCESS MATERIAL = 70 Cu. Yds.  
Topsoil = 70 Cu. Yds.  
EXCESS UNBALANCE = 0 Cu. Yds.  
(After Interim Rehabilitation)

UINTAH ENGINEERING & LAND SURVEYING  
85 So. 200 East \* Vernal, Utah 84078 \* (435) 789-1017