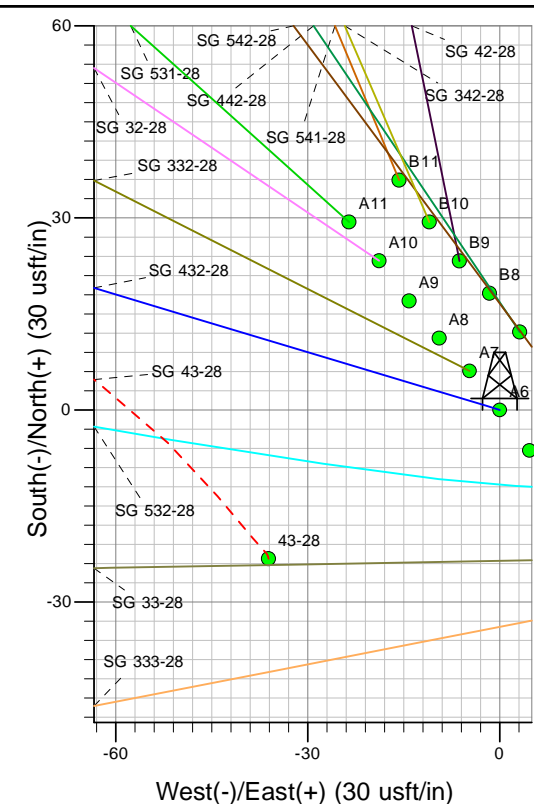
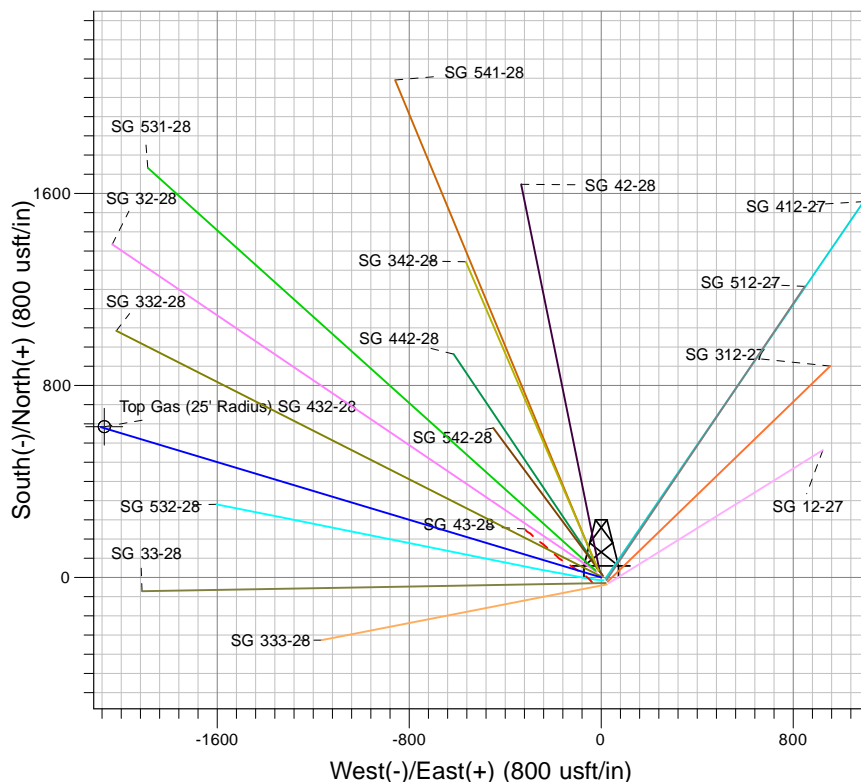
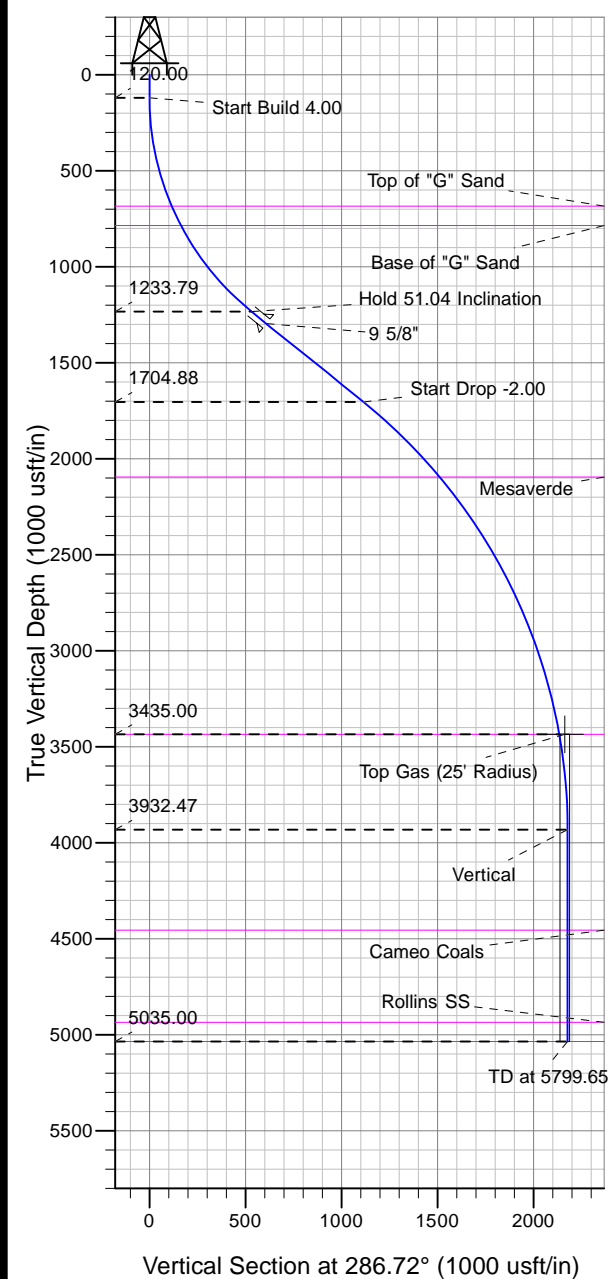




Well Name: SG 432-28
 Surface Location: SG 43-28 Pad
 North American Datum 1983 , US State Plane 1983, Colorado Central Zone
 Ground Elevation: 5119.00

+N/-S	+E/-W	Northing	Easting	Latitude	Longitude	Slot
0.00	0.00	1583860.16	2263452.93	39.40744	-108.10709	A6

KELLY BUSHING @ 5145.00usft (Nabors 573 (26' RKB) kjs)



Project: SG 28-07S-096W
 Site: SG 43-28 Pad
 Well: SG 432-28
 Design #2 16Jan13 kjs

Azimuths to True North
 Magnetic North: 10.27°

Magnetic Field
 Strength: 52097.4snT
 Dip Angle: 65.62°
 Date: 5/30/2012
 Model: IGRF2010

ANNOTATIONS									
MD	Inc	Azi	TVD	+N/-S	+E/-W	Vsect	Departure	Annotation	
120.00	0.00	0.00	120.00	0.00	0.00	0.00	0.00	Start Build 4.00	
1395.98	51.04	286.72	1233.79	152.98	-509.24	531.72	531.72	Hold 51.04 Inclination	
2145.17	51.04	286.72	1704.88	320.59	-1067.16	1114.27	1114.27	Start Drop -2.00	
4197.12	10.00	286.72	3435.00	614.02	-2043.95	2134.18	2134.18	Top Gas	
4697.12	0.00	0.00	3932.47	626.55	-2085.63	2177.71	2177.71	Vertical	
5799.65	0.00	0.00	5035.00	626.55	-2085.63	2177.71	2177.71	TD at 5799.65	