

T7S, R96W, 6th P.M.

WPX Energy Rocky Mountain, LLC

Well location, FEDERAL SG 432-28, located as shown in the NE 1/4 SE 1/4 of Section 28, T7S, R96W, 6th P.M., Garfield County, Colorado.

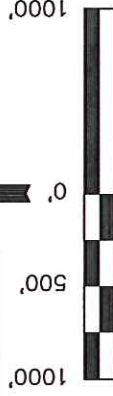
BASIS OF ELEVATION

SPOT ELEVATION AT THE NORTHWEST CORNER OF SECTION 30, T5S, R95W, 6th P.M. TAKEN FROM THE FORKED GULCH QUADRANGLE, COLORADO, GARFIELD COUNTY, 7.5 MINUTE SERIES (TOPOGRAPHICAL MAP) PUBLISHED BY THE UNITED STATES DEPARTMENT OF THE INTERIOR, GEOLOGICAL SURVEY. SAID ELEVATION IS MARKED AS BEING 5966 FEET.

BASIS OF BEARINGS

BASIS OF BEARINGS IS A G.P.S. OBSERVATION.

| LINE TABLE | | |
|------------|-------------|---------|
| LINE | DIRECTION | LENGTH |
| L1 | N01°06'05"E | 46.30' |
| L2 | N89°52'40"W | 509.15' |
| L3 | N88°40'54"W | 572.72' |
| L4 | N00°12'56"W | 223.00' |



SCALE

CERTIFICATE

THIS IS TO CERTIFY THAT THE ABOVE PLAT WAS PREPARED FROM FIELD NOTES OF ACTUAL SURVEYS MADE BY ME OR UNDER MY SUPERVISION AND THAT THE SAME ARE TRUE AND CORRECT TO THE BEST OF MY KNOWLEDGE AND BELIEF.

REGISTERED LAND SURVEYOR
STATE OF COLORADO
EXPIRATION DATE 12-12-2012

REVISED: 12-12-12 M.D.

UTAH ENGINEERING & LAND SURVEYING

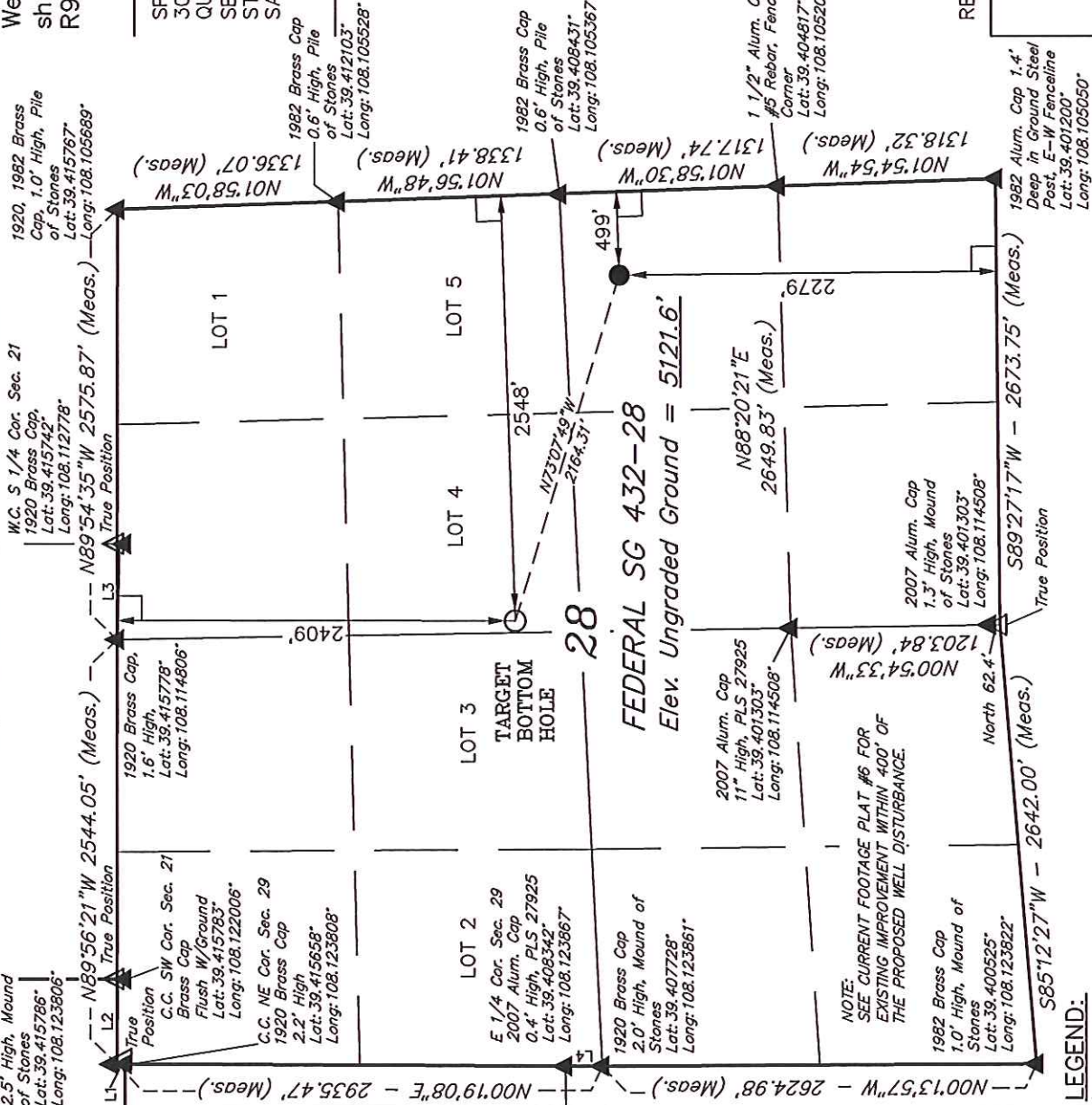
85 SOUTH 200 EAST - VERNAL, UTAH 84078

(435) 789-1017

| | | | | | |
|---------|----------------|----------------|--------------------------------|-------------|----------|
| SCALE | 1" = 1000' | DATE SURVEYED: | 02-28-11 | DATE DRAWN: | 11-26-12 |
| PARTY | B.J. R.P. M.D. | REFERENCES | G.L.O. PLAT | | |
| WEATHER | COLD | FILE | WPX ENERGY ROCKY MOUNTAIN, LLC | | |

| | | |
|------------|--|--|
| PDOP = 1.7 | NAD 83 (SURFACE LOCATION) | NAD 83 (TARGET BOTTOM HOLE) |
| | LATITUDE = 39°24'26.79" (39.407442) | LATITUDE = 39°24'33.00" (39.409167) |
| | LONGITUDE = 108°06'25.53" (108.107092) | LONGITUDE = 108°06'51.91" (108.114419) |
| | STATE PLANE-(COLO. CENTRAL-NAD83) | STATE PLANE-(COLO. CENTRAL-NAD83) |
| | N = 1583860.16 | N = 1584547.70 |
| | E = 2263452.93 | E = 2261401.36 |

| | |
|---------------------|--------------------------------------|
| LEGEND: | 90° SYMBOL |
| PROPOSED WELL HEAD. | SECTION CORNERS LOCATED. |
| SECTION CORNERS | RE-ESTABLISHED. (Not Set on Ground.) |



NOTE: SEE CURRENT FOOTAGE PLAT #6 FOR EXISTING IMPROVEMENT WITHIN 400' OF THE PROPOSED WELL DISTURBANCE.