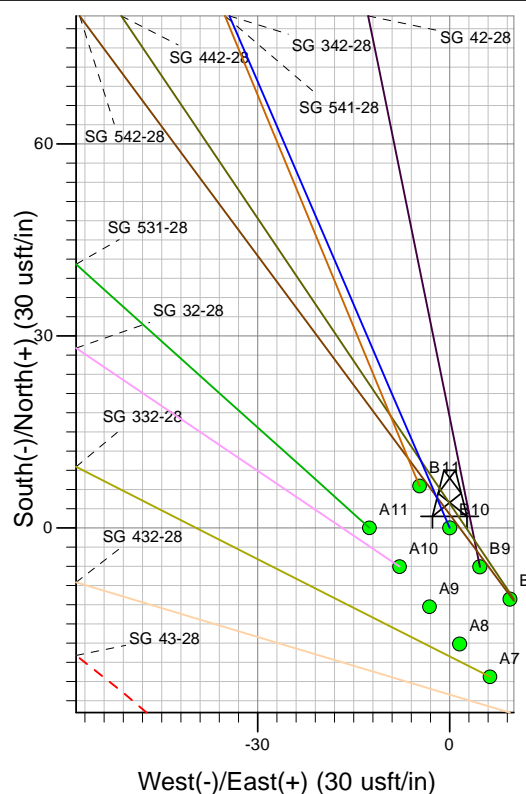
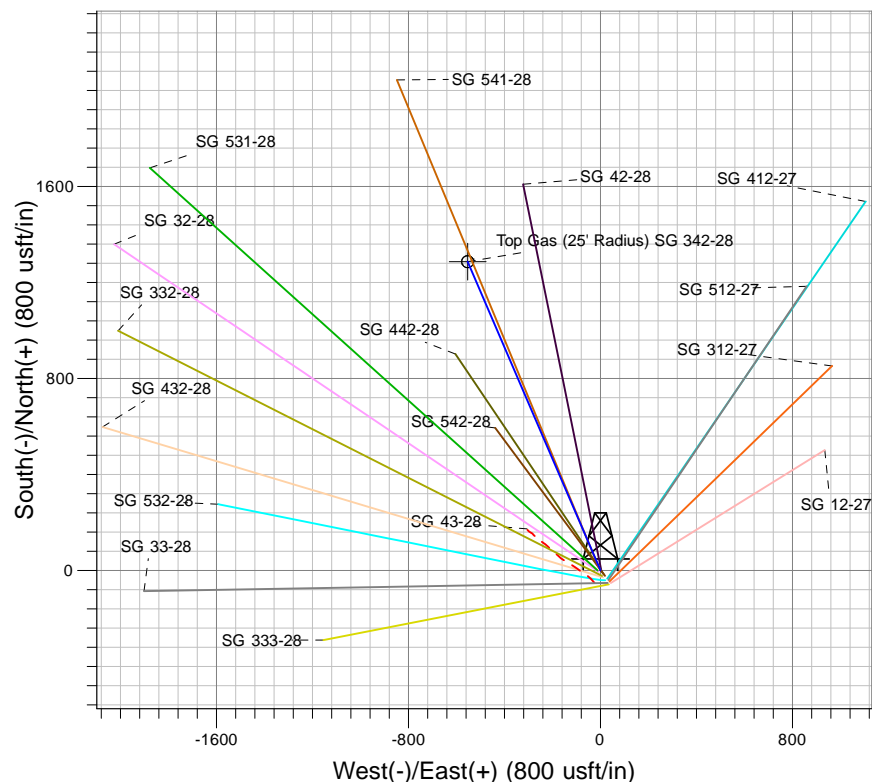
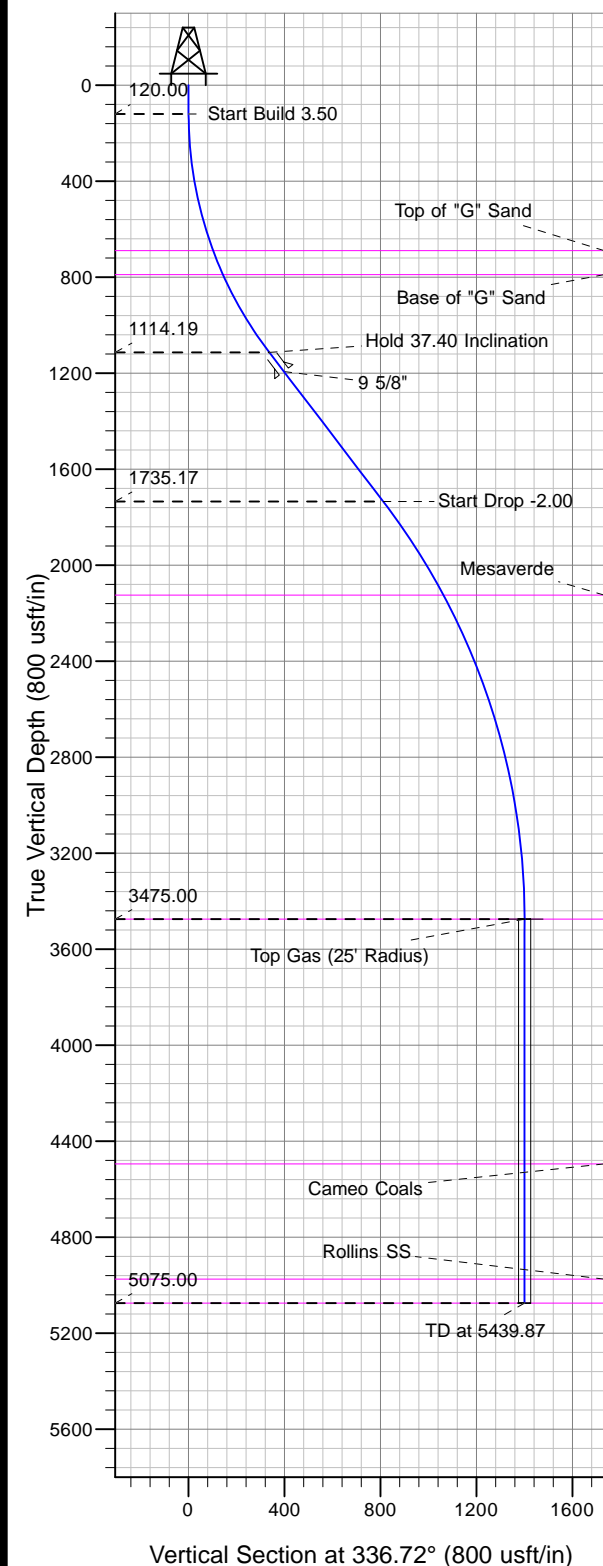




Well Name: SG 342-28  
 Surface Location: SG 43-28 Pad  
 North American Datum 1983 , US State Plane 1983, Colorado Central Zone  
 Ground Elevation: 5119.00

+N/-S	+E/-W	Northing	Easting	Latitude	Longitude	Slot
0.00	0.00	1583889.81	2263442.79	39.40752	-108.10713	B10

KELLY BUSHING @ 5145.00usft (Nabors 573 (26' RKB) kjs)



Project: SG 28-07S-096W  
 Site: SG 43-28 Pad  
 Well: SG 342-28  
 Design #2 16Jan13 kjs



Azimuths to True North  
 Magnetic North: 10.27°  
 Magnetic Field  
 Strength: 52097.5nT  
 Dip Angle: 65.62°  
 Date: 5/30/2012  
 Model: IGRF2010

#### ANNOTATIONS

MD	Inc	Azi	TVD	+N/-S	+E/-W	Vsect	Departure	Annotation
120.00	0.00	0.00	120.00	0.00	0.00	0.00	0.00	Start Build 3.50
1188.45	37.40	336.72	1114.19	309.08	-132.99	336.47	336.47	Hold 37.40 Inclination
1970.08	37.40	336.72	1735.17	745.13	-320.61	811.17	811.17	Start Drop -2.00
3839.87	0.00	0.00	3475.00	1286.01	-553.33	1400.00	1400.00	Top Gas
5439.87	0.00	0.00	5075.00	1286.01	-553.33	1400.00	1400.00	TD at 5439.87