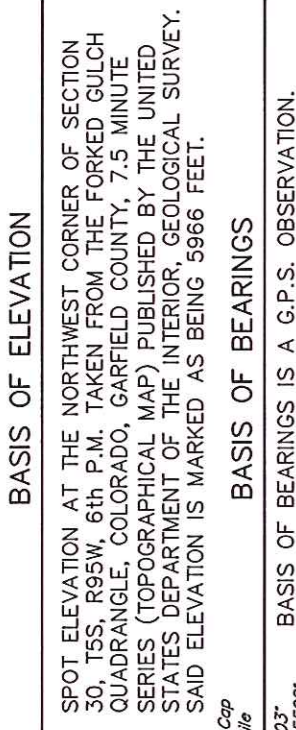
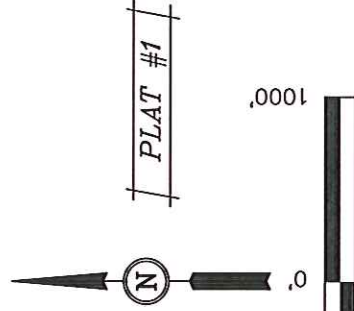


## WPX Energy Rocky Mountain, LLC

Well location, FEDERAL SG 342-28, located as shown in the NE 1/4 SE 1/4 of Section 28, T7S, R96W, 6th P.M., Garfield County, Colorado.



LINE TABLE		
LINE	DIRECTION	LENGTH
L1	N01°06'05"E	46.30'
L2	N89°52'40"W	509.15'
L3	N88°40'54"W	572.72'
L4	N00°12'56"W	223.00'



CERTIFICATE

THIS IS TO CERTIFY THAT THE ABOVE PLANT WAS PREPARED FROM FIELD NOTES OF ACTUAL SURVEYS MADE BY ME OR UNDER MY SUPERVISION AND THAT THE SAME ARE TRUE AND CORRECT TO THE BEST OF MY KNOWLEDGE AND BELIEF.

REGISTERED LAND SURVEYOR  
REGISTRATION NO. 17492  
STATE OF COLORADO

REVISÉ: 12-12-12 M.D.

UTAH ENGINEERING & LAND SURVEYING  
85 SOUTH 200 EAST - VERNAL, UTAH 84078  
(435) 789-1017

$\text{PDOP} = 1$

SCALE 1" = 1000'

DATE SURVEYED:

DATE DRAWN:

▲ = SECTION CORNERS LOCATED.  
△ = SECTION CORNERS  
RE-ESTABLISHED. (Not Set  
on Ground.)

NAD 83 (TARGET BOTTOM HOLE)	NAD 83 (SURFACE LOCATION)
LATITUDE = 39°24'39.79" (39.411053)	LATITUDE = 39°24'27.08" (39.407571)
LONGITUDE = 108°06'32.72" (108.108089)	LONGITUDE = 108°06'25.67" (108.1071)
STATE PLANE-(COLO. CENTRAL-NAD83)	STATE PLANE-(COLO. CENTRAL-NAD83)
N = 13685191.10	N = 13683689.81
E = 2262926.61	E = 2263442.79

PARTY	B.J.	R.P.	M.D.
-------	------	------	------

WEATHER	FILE
COLD	WP

MOUNTAIN, L