

T7S, R96W, 6th P.M.

WPX Energy Rocky Mountain, LLC

Well location, FEDERAL SG 412-27 (SURFACE LOCATION), located as shown in the NE 1/4 SE 1/4 of Section 28, T7S, R96W, 6th P.M., Garfield County, Colorado.

BASIS OF ELEVATION

SPOT ELEVATION AT THE NORTHWEST CORNER OF SECTION 30, T5S, R95W, 6th P.M. TAKEN FROM THE FORKED GULCH QUADRANGLE, COLORADO, GARFIELD COUNTY, 7.5 MINUTE SERIES (TOPOGRAPHICAL MAP) PUBLISHED BY THE UNITED STATES DEPARTMENT OF THE INTERIOR, GEOLOGICAL SURVEY. SAID ELEVATION IS MARKED AS BEING 5966 FEET.

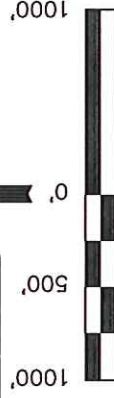
BASIS OF BEARINGS

BASIS OF BEARINGS IS A G.P.S. OBSERVATION.

LINE TABLE		
LINE	DIRECTION	LENGTH
L1	N01°06'05"E	46.30'
L2	N89°52'40"W	509.15'
L3	N88°40'54"W	572.72'
L4	N00°12'56"W	223.00'



PLAT #1



SCALE

CERTIFICATE

THIS IS TO CERTIFY THAT THE ABOVE PLAT WAS PREPARED FROM FIELD NOTES OF ACTUAL SURVEYS MADE BY ME OR UNDER MY SUPERVISION AND THAT THE SAME ARE TRUE AND CORRECT TO THE BEST OF MY KNOWLEDGE AND BELIEF.

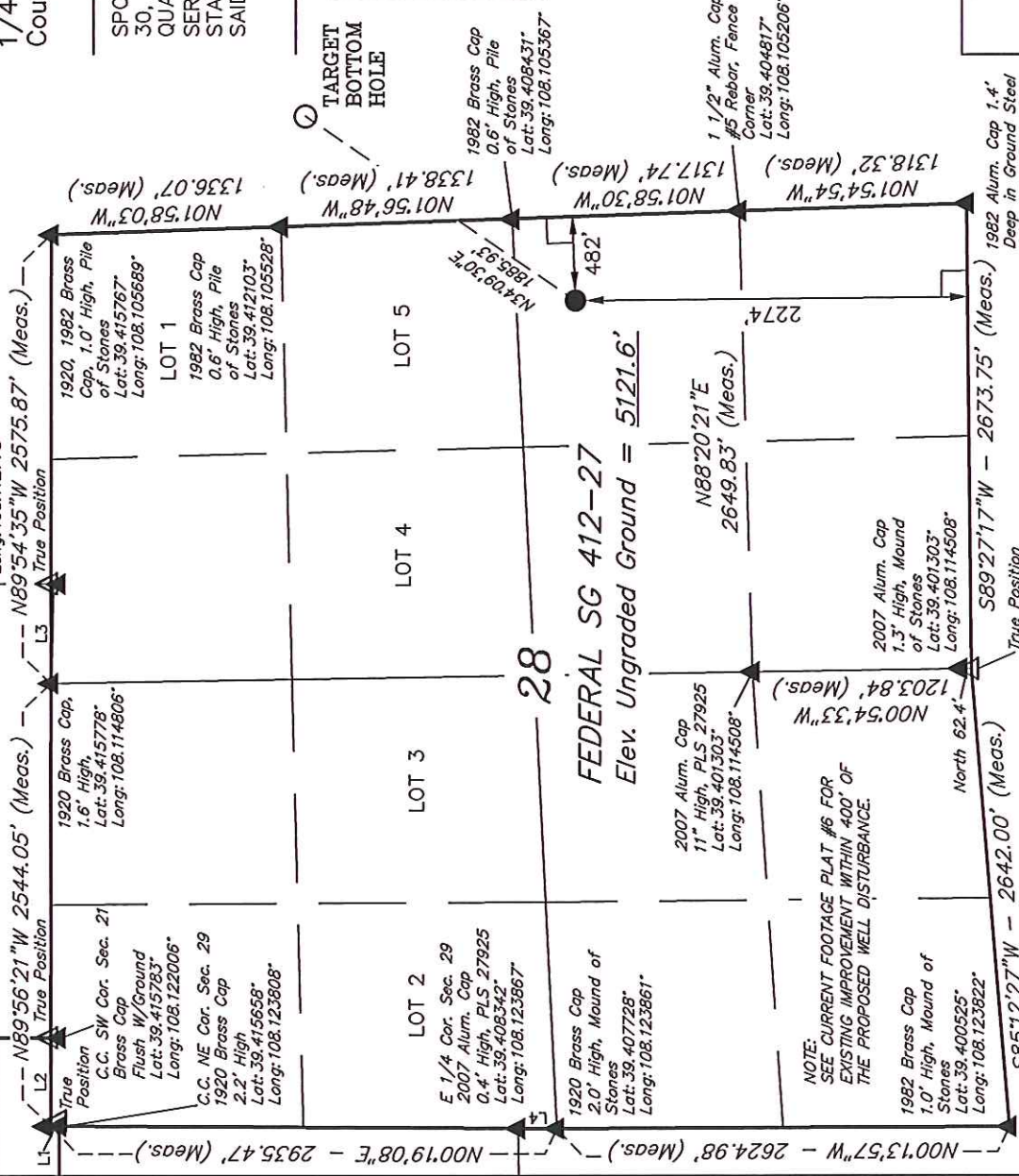
REGISTERED LAND SURVEYOR
REGISTRATION NO. 17492
STATE OF COLORADO
DATE OF QUALIFICATION 02-26-2012

UNTAEH ENGINEERING & LAND SURVEYING

85 SOUTH 200 EAST - VERNAL, UTAH 84078

(435) 789-1017

SCALE	1" = 1000'	DATE SURVEYED:	02-28-11	DATE DRAWN:	11-26-12
PARTY	B.J. R.P. M.D.	REFERENCES	G.L.O. PLAT		
WEATHER	COLD	FILE	WPX ENERGY ROCKY MOUNTAIN, LLC		



LEGEND:

- 90° SYMBOL
 - PROPOSED WELL HEAD.
 - SECTION CORNERS LOCATED.
 - SECTION CORNERS
 - RE-ESTABLISHED. (Not Set on Ground.)
- NOTE:
THE PROPOSED BOTTOM HOLE FOR THIS WELL IS LOCATED IN THE SW 1/4 NW 1/4 OF SECTION 27, T7S, R96W, 6th P.M. AT A DISTANCE OF 1488' FNL 629' FWL IT BEARS N34°09'30"E 1885.93' FROM THE PROPOSED WELL HEAD.

PDOP = 1.7
NAD 83 (SURFACE LOCATION)
LATITUDE = 39°24'26.74" (39.407428)
LONGITUDE = 108°06'25.31" (108.107031)
STATE PLANE-COLO. CENTRAL-NAD83
N = 1583854.61
E = 2263470.05

WPX Energy Rocky Mountain, LLC

T7S, R96W, 6th P.M.

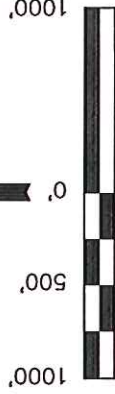
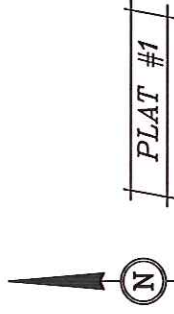
Well location, FEDERAL SG 412-27 (TARGET BOTTOM HOLE), located as shown in the SW 1/4 NW 1/4 of Section 27, T7S, R96W, 6th P.M., Garfield County, Colorado.

BASIS OF ELEVATION

SPOT ELEVATION AT THE NORTHWEST CORNER OF SECTION 30, T5S, R95W, 6th P.M. TAKEN FROM THE FORKED GULCH QUADRANGLE, COLORADO, GARFIELD COUNTY, 7.5 MINUTE SERIES (TOPOGRAPHICAL MAP) PUBLISHED BY THE UNITED STATES DEPARTMENT OF THE INTERIOR, GEOLOGICAL SURVEY. SAID ELEVATION IS MARKED AS BEING 5966 FEET.

BASIS OF BEARINGS

BASIS OF BEARINGS IS A G.P.S. OBSERVATION.



CERTIFICATE

THIS IS TO CERTIFY THAT THE ABOVE PLAT WAS PREPARED FROM FIELD NOTES OF ACTUAL SURVEYS MADE BY ME OR UNDER MY SUPERVISION AND THAT THE SAME ARE TRUE AND CORRECT TO THE BEST OF MY KNOWLEDGE AND BELIEF.

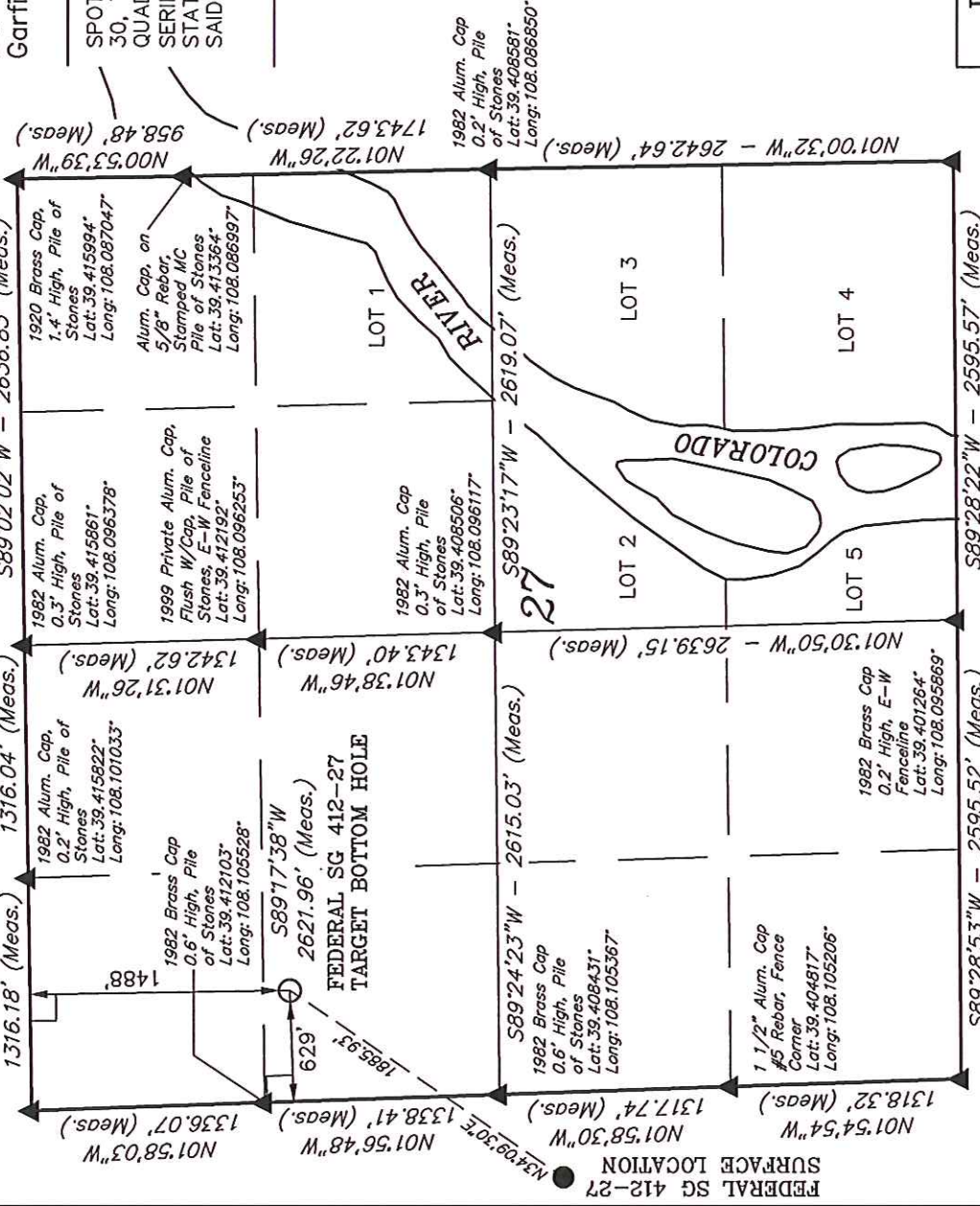
REGISTERED LAND SURVEYOR
REGISTRATION NO. 12442
STATE OF COLORADO
Exp. 06-26-2012

UNTAEH ENGINEERING & LAND SURVEYING

85 SOUTH 200 EAST - VERNAL, UTAH 84078

(435) 789-1017

SCALE 1" = 1000'	DATE SURVEYED: 02-28-11	DATE DRAWN: 11-26-12
PARTY B.J. R.P. M.D.	REFERENCES G.L.O. PLAT	
WEATHER COLD	FILE WPX ENERGY ROCKY MOUNTAIN, LLC	



NOTE:
THE PROPOSED WELL HEAD FOR THIS WELL IS LOCATED IN THE NE 1/4 SE 1/4 OF SECTION 28, T7S, R96W, 6th P.M. AT A DISTANCE OF 2274' FSL 482' FEL. IT BEARS S34°09'30"W 1885.93' FROM THE PROPOSED TARGET BOTTOM HOLE.

LEGEND:

- 90° SYMBOL
- PROPOSED WELL HEAD.
- SECTION CORNERS LOCATED.

NAD 83 (TARGET BOTTOM HOLE)
LATITUDE = 39°24'42.16" (39.411711)
LONGITUDE = 108°06'11.82" (108.103283)
STATE PLANE - (COLO. CENTRAL - NAD83)
N = 1585383.73
E = 2264573.11