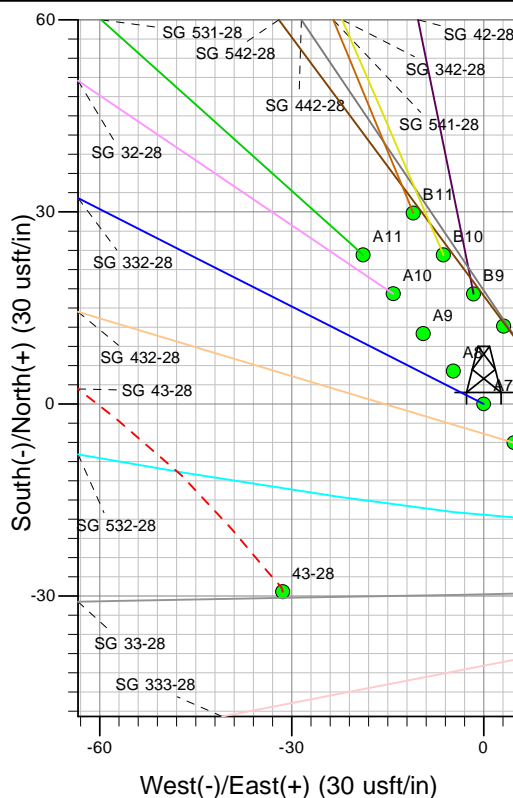
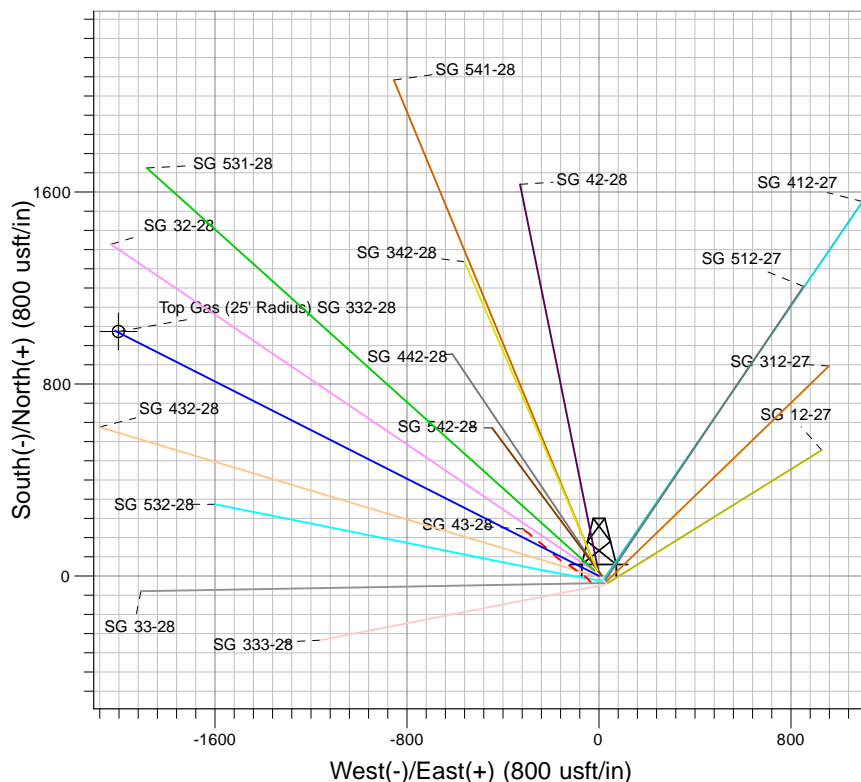
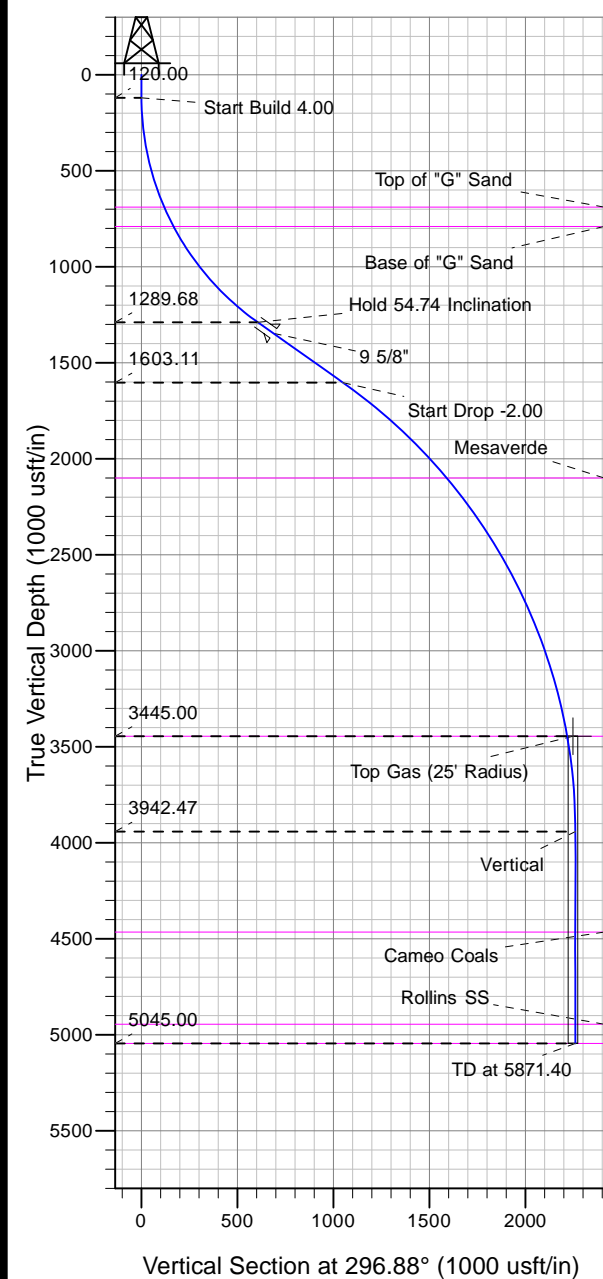




Well Name: SG 332-28  
 Surface Location: SG 43-28 Pad  
 North American Datum 1983 , US State Plane 1983, Colorado Central Zone  
 Ground Elevation: 5119.00  
 +N/-S 0.00 +E/-W 0.00 Northing 1583866.37 Easting 2263448.40 Latitude 39.40746 Longitude -108.10711 Slot A7  
 KELLY BUSHING @ 5145.00usft (Nabors 573 (26' RKB) kjs)



Project: SG 28-07S-096W  
 Site: SG 43-28 Pad  
 Well: SG 332-28  
 Design #2 16Jan13 kjs

Azimuths to True North  
 Magnetic North: 10.27°  
 Magnetic Field  
 Strength: 52097.4snT  
 Dip Angle: 65.62°  
 Date: 5/30/2012  
 Model: IGRF2010

#### ANNOTATIONS

MD	Inc	Azi	TVD	+N/-S	+E/-W	Vsect	Departure	Annotation
120.00	0.00	0.00	120.00	0.00	0.00	0.00	0.00	Start Build 4.00
1488.62	54.74	296.88	1289.68	273.76	-540.17	605.59	605.59	Hold 54.74 Inclination
2031.63	54.74	296.88	1603.11	474.22	-935.70	1049.00	1049.00	Start Drop -2.00
4268.86	10.00	296.88	3445.00	1002.07	-1977.22	2216.65	2216.65	Top Gas
4768.86	0.00	0.00	3942.47	1021.74	-2016.04	2260.17	2260.17	Vertical
5871.40	0.00	0.00	5045.00	1021.74	-2016.04	2260.17	2260.17	TD at 5871.40