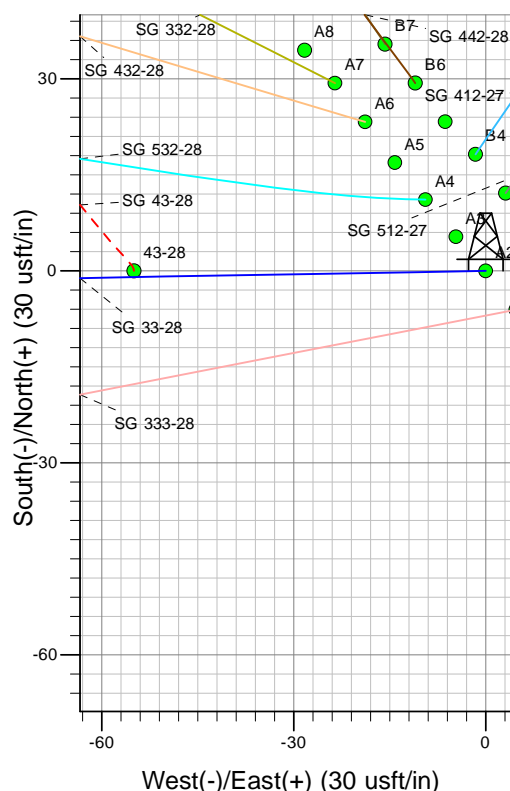
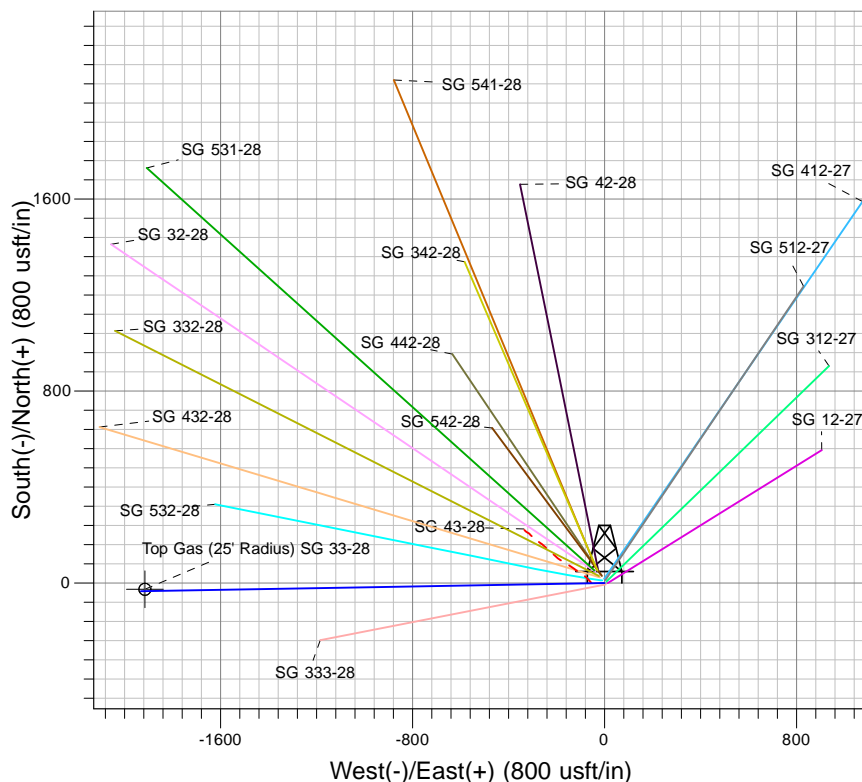
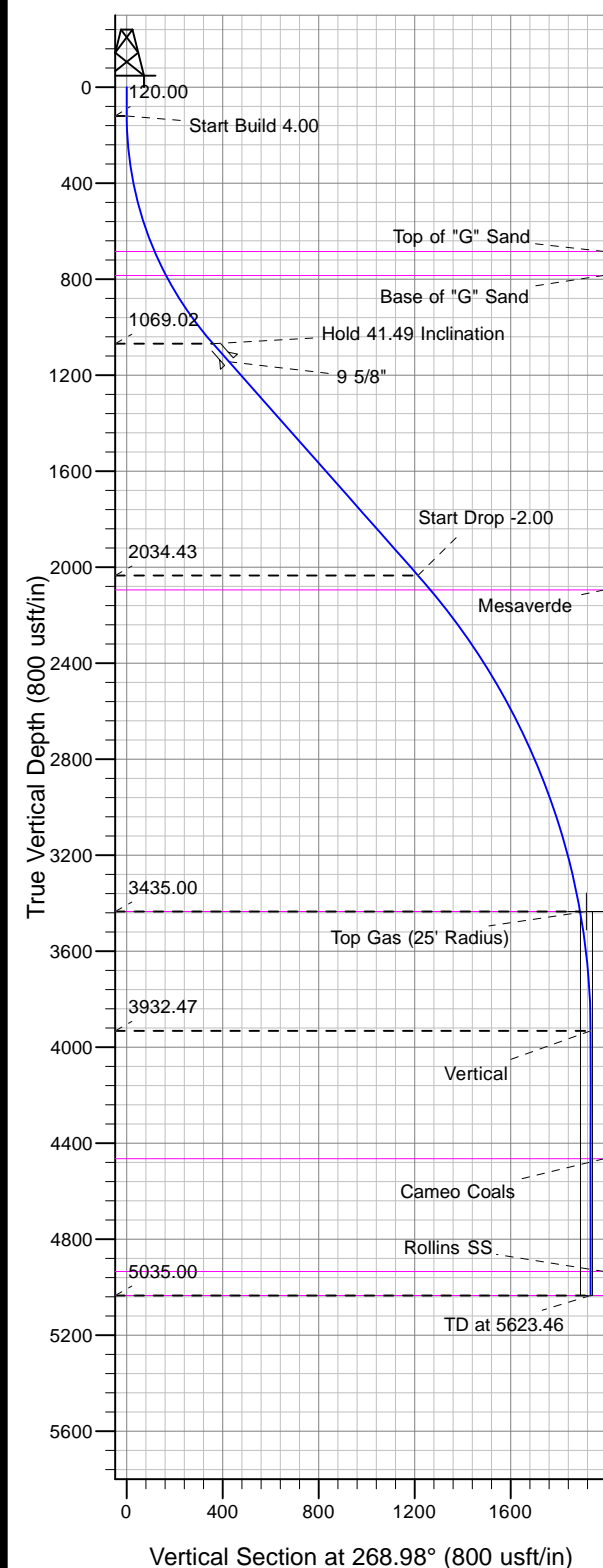




Well Name: SG 33-28
 Surface Location: SG 43-28 Pad
 North American Datum 1983 , US State Plane 1983, Colorado Central Zone
 Ground Elevation: 5119.00

+N/-S	+E/-W	Northing	Easting	Latitude	Longitude	Slot
0.00	0.00	1583836.36	2263471.10	39.40738	-108.10702	A2

KELLY BUSHING @ 5145.00usft (Nabors 573 (26' RKB) kjs)



Project: SG 28-07S-096W
 Site: SG 43-28 Pad
 Well: SG 33-28
 Design #2 16Jan13 kjs

Azimuths to True North
 Magnetic North: 10.27°
 Magnetic Field
 Strength: 52097.4snT
 Dip Angle: 65.62°
 Date: 5/30/2012
 Model: IGRF2010

ANNOTATIONS

MD	Inc	Azi	TVD	+N/-S	+E/-W	V/Sect	Departure	Annotation
120.00	0.00	0.00	120.00	0.00	0.00	0.00	0.00	Start Build 4.00
1157.35	41.49	268.98	1069.02	-6.38	-359.44	359.49	359.49	Hold 41.49 Inclination
2446.23	41.49	268.98	2034.43	-21.55	-1213.24	1213.43	1213.43	Start Drop -2.00
4020.93	10.00	268.98	3435.00	-33.54	-1888.60	1888.89	1888.89	Top Gas
4520.93	0.00	0.00	3932.47	-34.32	-1932.11	1932.42	1932.42	Vertical
5623.46	0.00	0.00	5035.00	-34.32	-1932.11	1932.42	1932.42	TD at 5623.46