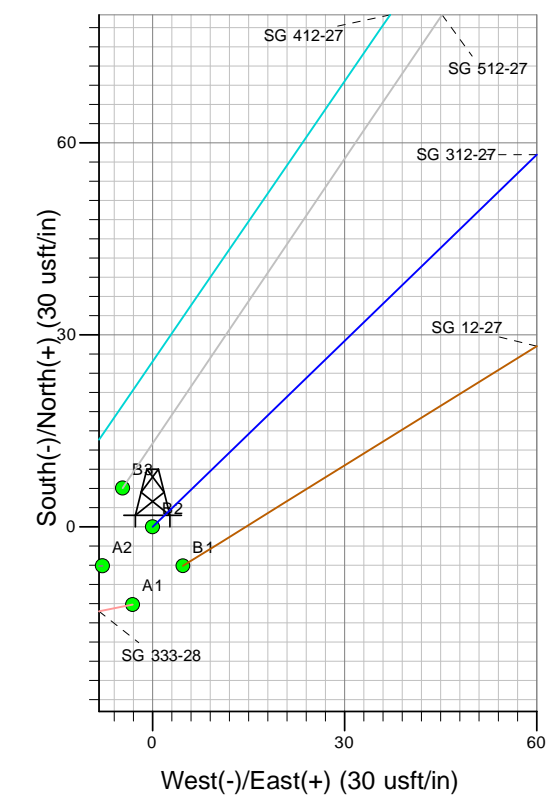
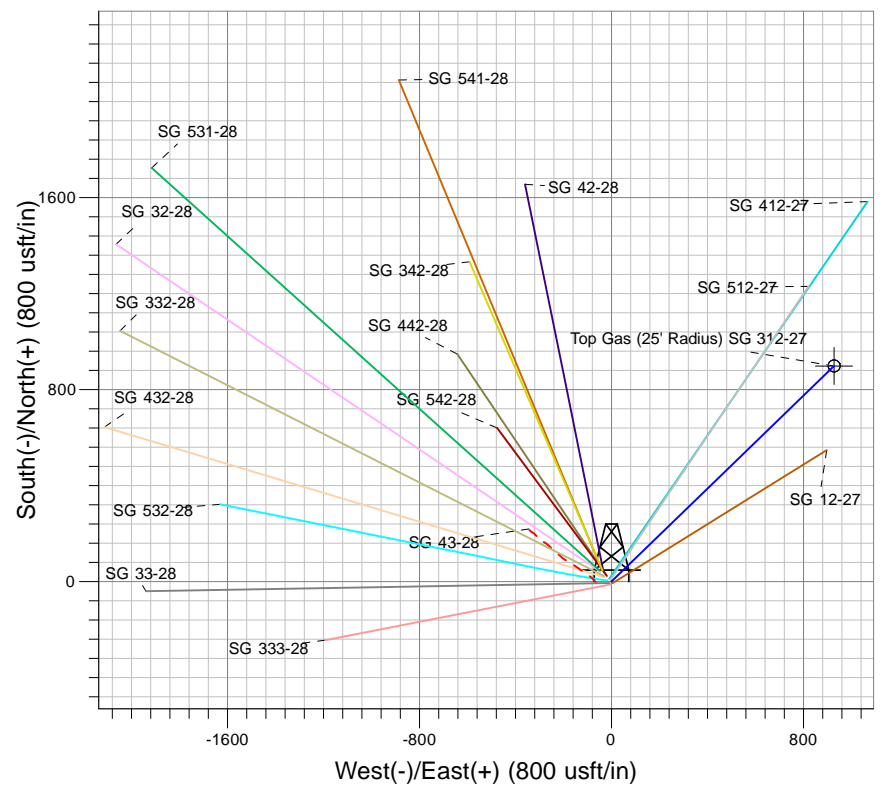
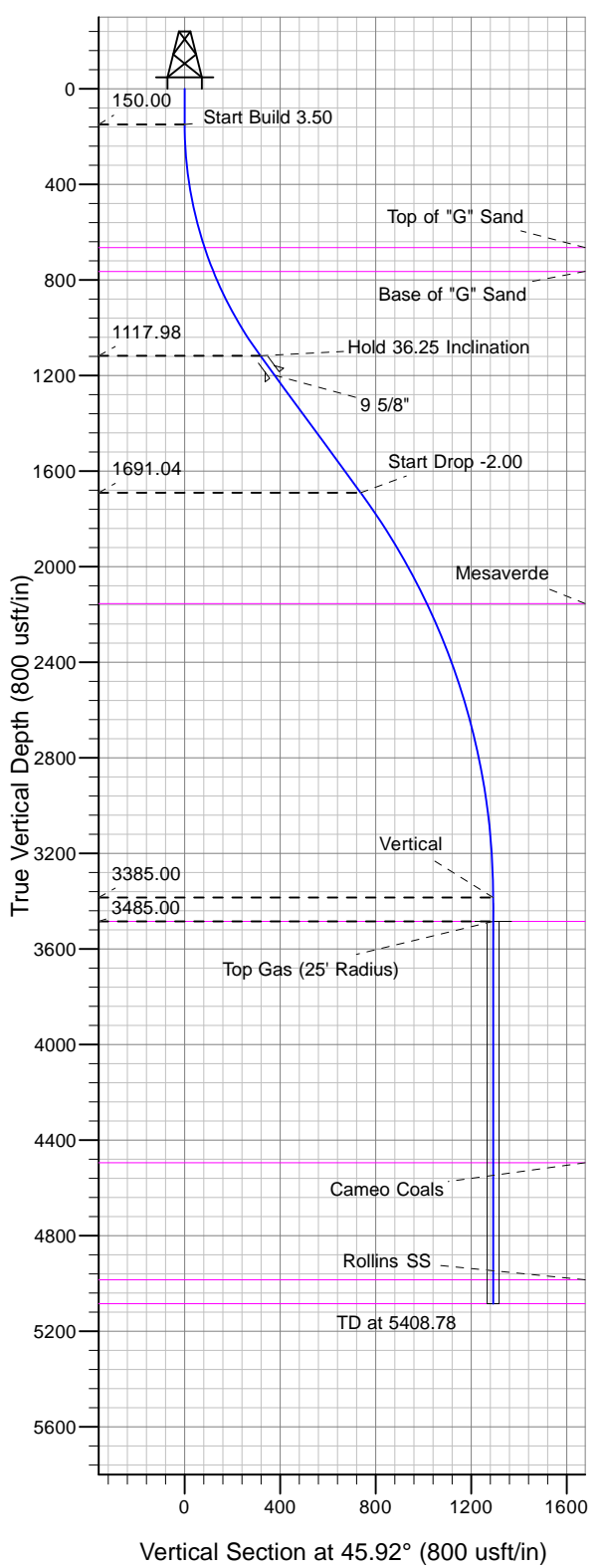




Well Name: SG 312-27
 Surface Location: SG 43-28 Pad
 North American Datum 1983 , US State Plane 1983, Colorado Central Zone
 Ground Elevation: 5119.00
 +N/-S 0.00 +E/-W 0.00 Northing 1583842.21 Easting 2263479.11 Latitude 39.40739 Longitude -108.10700 Slot B2
 KELLY BUSHING @ 5145.00usft (Nabors 573 (26' RKB) kjs)



Project: SG 28-07S-096W
 Site: SG 43-28 Pad
 Well: SG 312-27
 Design #2 16Jan13 kjs

T M
 Azimuths to True North
 Magnetic North: 10.27°
 Magnetic Field
 Strength: 52097.4snT
 Dip Angle: 65.62°
 Date: 5/30/2012
 Model: IGRF2010

ANNOTATIONS

MD	Inc	Azi	TVD	+N/-S	+E/-W	V Sect	Departure	Annotation
150.00	0.00	0.00	150.00	0.00	0.00	0.00	0.00	Start Build 3.50
1185.70	36.25	45.92	1117.98	220.43	227.60	316.85	316.85	Hold 36.25 Inclination
1896.30	36.25	45.92	1691.04	512.75	529.44	737.03	737.03	Start Drop -2.00
3708.78	0.00	0.00	3385.00	898.49	927.74	1291.51	1291.51	Vertical
3808.78	0.00	0.00	3485.00	898.49	927.74	1291.51	1291.51	Top Gas
5408.78	0.00	0.00	5085.00	898.49	927.74	1291.51	1291.51	TD at 5408.78