

T7S, R96W, 6th P.M.

WPX Energy Rocky Mountain, LLC

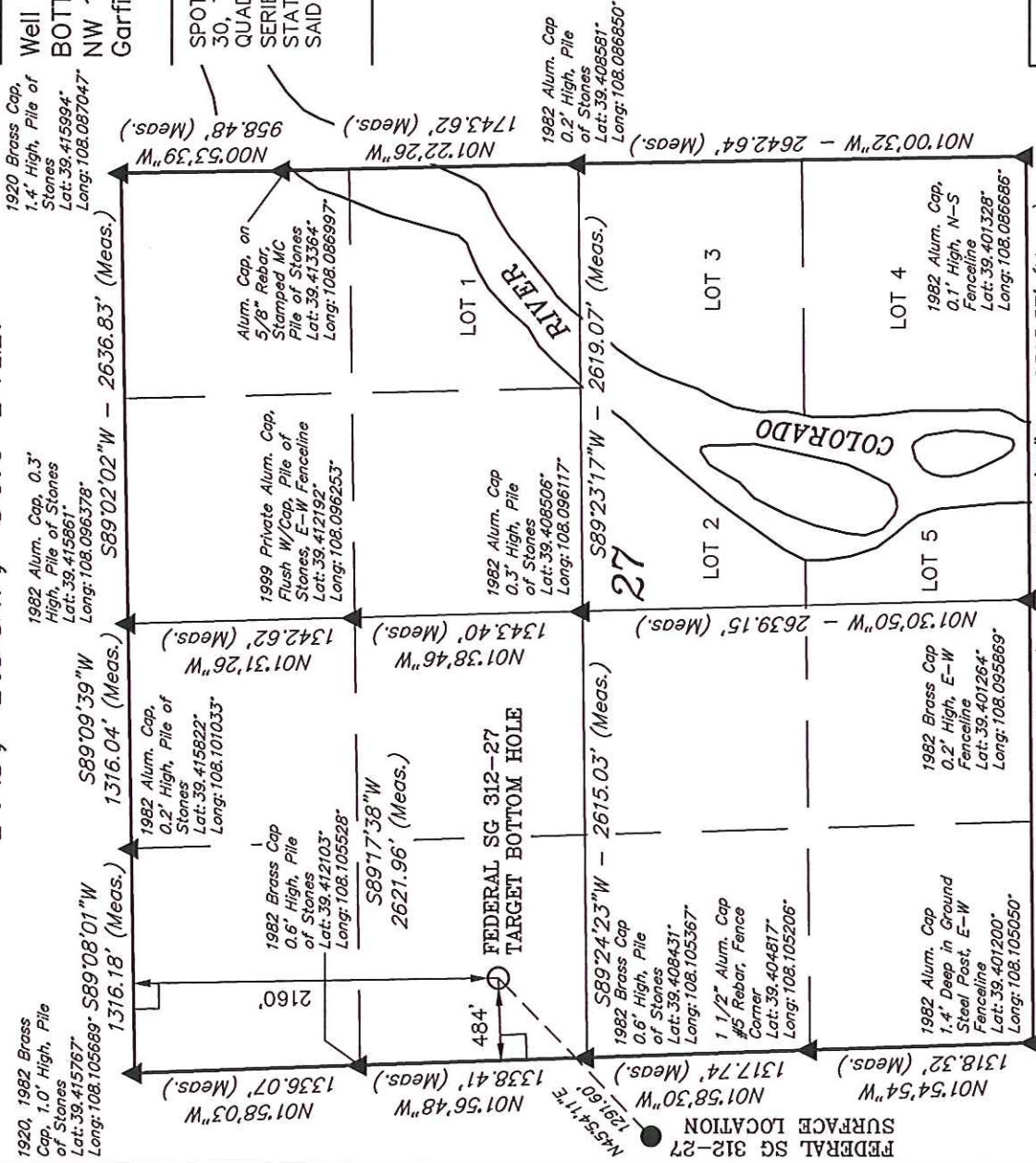
Well location, FEDERAL SG 312-27 (TARGET BOTTOM HOLE), located as shown in the SW 1/4 NW 1/4 of Section 27, T7S, R96W, 6th P.M., Garfield County, Colorado.

BASIS OF ELEVATION

SPOT ELEVATION AT THE NORTHWEST CORNER OF SECTION 30, T5S, R95W, 6th P.M. TAKEN FROM THE FORKED GULCH QUADRANGLE, COLORADO, GARFIELD COUNTY, 7.5 MINUTE SERIES (TOPOGRAPHICAL MAP) PUBLISHED BY THE UNITED STATES DEPARTMENT OF THE INTERIOR, GEOLOGICAL SURVEY. SAID ELEVATION IS MARKED AS BEING 5966 FEET.

BASIS OF BEARINGS

BASIS OF BEARINGS IS A G.P.S. OBSERVATION.



THIS IS TO CERTIFY THAT THE ABOVE PLAT WAS PREPARED FROM FIELD NOTES OF ACTUAL SURVEYS MADE BY ME OR UNDER MY SUPERVISION AND THAT THE SAME ARE TRUE AND CORRECT TO THE BEST OF MY KNOWLEDGE AND BELIEF.

UTAH ENGINEERING & LAND SURVEYING	
85 SOUTH 200 EAST - VERNAL, UTAH 84078 (435) 789-1017	
SCALE 1" = 1000'	DATE SURVEYED: 02-28-11
PARTY B.J. R.P. M.D.	DATE DRAWN: 11-26-12
WEATHER COLD	REFERENCES G.L.O. PLAT
FILE WPX ENERGY ROCKY MOUNTAIN, LLC	

NAD 83 (TARGET BOTTOM HOLE)	
LATITUDE = 39°24'35.50"	(39.409861)
LONGITUDE = 108°06'13.37"	(108.103714)
STATE PLANE-(COLO. CENTRAL-NAD83)	
N = 1584713.67	
E = 2264432.20	

NOTE: THE PROPOSED WELL HEAD FOR THIS WELL IS LOCATED IN THE NE 1/4 SE 1/4 OF SECTION 28, T7S, R96W, 6th P.M. AT A DISTANCE OF 2262' FSL 473' FELL IT BEARS S45°54'11"W 1291.60' FROM THE PROPOSED TARGET BOTTOM HOLE.

- LEGEND:**
- = 90° SYMBOL
 - = PROPOSED WELL HEAD.
 - ▲ = SECTION CORNERS LOCATED.