

T7S, R96W, 6th P.M.

WPX Energy Rocky Mountain, LLC

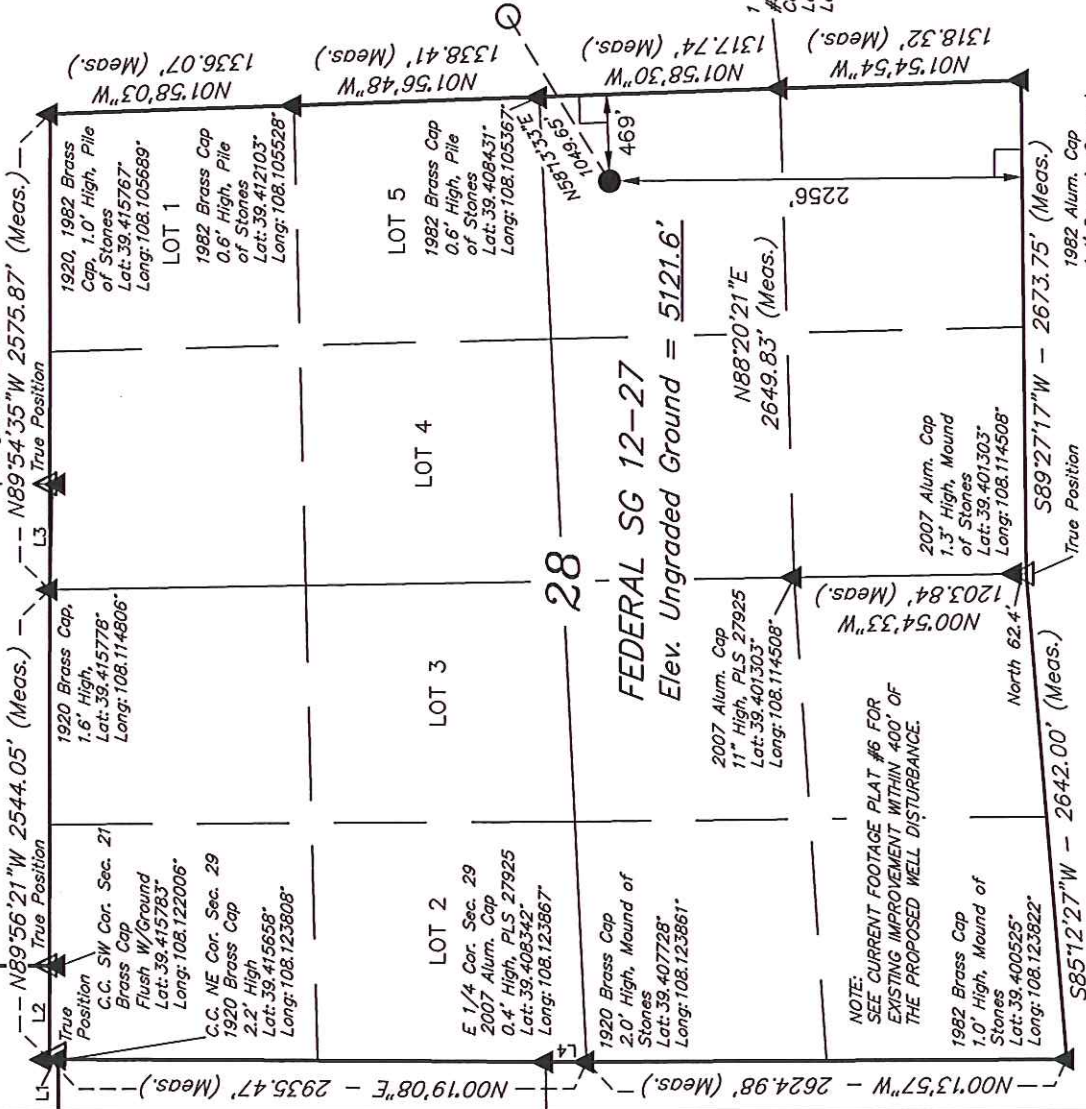
Well location, FEDERAL SG 12-27 (SURFACE LOCATION), located as shown in the NE 1/4 SE 1/4 of Section 28, T7S, R96W, 6th P.M., Garfield County, Colorado.

BASIS OF ELEVATION

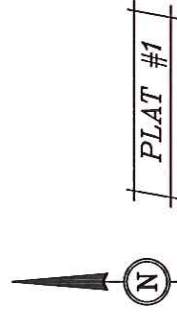
SPOT ELEVATION AT THE NORTHWEST CORNER OF SECTION 30, T5S, R95W, 6th P.M. TAKEN FROM THE FORKED GULCH QUADRANGLE, COLORADO, GARFIELD COUNTY, 7.5 MINUTE SERIES (TOPOGRAPHICAL MAP) PUBLISHED BY THE UNITED STATES DEPARTMENT OF THE INTERIOR, GEOLOGICAL SURVEY. SAID ELEVATION IS MARKED AS BEING 5966 FEET.

BASIS OF BEARINGS

BASIS OF BEARINGS IS A G.P.S. OBSERVATION.



LINE TABLE	
LINE	DIRECTION LENGTH
L1	N01°06'05"E 46.30'
L2	N89°52'40"W 509.15'
L3	N88°40'54"W 572.72'
L4	N00°12'56"W 223.00'



SCALE
0 50 100

CERTIFICATE
THIS IS TO CERTIFY THAT THE ABOVE PLAT WAS PREPARED FROM FIELD NOTES OF ACTUAL SURVEYS MADE BY ME OR UNDER MY SUPERVISION AND THAT THE SAME ARE TRUE AND CORRECT TO THE BEST OF MY KNOWLEDGE AND BELIEF.
REGISTERED LAND SURVEYOR
REGISTRATION NO. 17492
STATE OF COLORADO
00-26-2012

UTIAH ENGINEERING & LAND SURVEYING
85 SOUTH 200 EAST - VERNAL, UTAH 84078
(435) 789-1017

SCALE 1" = 1000'
DATE SURVEYED: 02-28-11
DATE DRAWN: 11-26-12

PARTY B.J. R.P. M.D.
REFERENCES G.L.O. PLAT

WEATHER COLD
FILE WPX ENERGY ROCKY MOUNTAIN, LLC

NOTE: THE PROPOSED BOTTOM HOLE FOR THIS WELL IS LOCATED IN THE SW 1/4 NW 1/4 OF SECTION 27, T7S, R96W, 6th P.M. AT A DISTANCE OF 2511' ENL 442' FWL, IT BEARS N58°13'33"E 1049.65' FROM THE PROPOSED WELL HEAD.

NOTE: SEE CURRENT FOOTAGE PLAT #6 FOR EXISTING IMPROVEMENT WITHIN 400' OF THE PROPOSED WELL DISTURBANCE.

NOTE: RE-ESTABLISHED. (Not Set on Ground.)

- LEGEND:**
- 90° SYMBOL
 - PROPOSED WELL HEAD.
 - SECTION CORNERS LOCATED.
 - SECTION CORNERS RE-ESTABLISHED. (Not Set on Ground.)

PDOP = 1.7
NAD 83 (SURFACE LOCATION)
LATITUDE = 39°24'26.56" (39.407378)
LONGITUDE = 108°06'25.13" (108.108981)
STATE PLANE--(COLO. CENTRAL--NAD83)
N = 1583836.00
E = 2263483.65

WPX Energy Rocky Mountain, LLC

Well location, FEDERAL SG 12-27 (TARGET BOTTOM HOLE), located as shown in the SW 1/4 NW 1/4 of Section 27, T7S, R96W, 6th P.M., Garfield County, Colorado.

BASIS OF ELEVATION

SPOT ELEVATION AT THE NORTHWEST CORNER OF SECTION 30, T5S, R95W, 6th P.M. TAKEN FROM THE FORKED GULCH QUADRANGLE, COLORADO, GARFIELD COUNTY, 7.5 MINUTE SERIES (TOPOGRAPHICAL MAP) PUBLISHED BY THE UNITED STATES DEPARTMENT OF THE INTERIOR, GEOLOGICAL SURVEY. SAID ELEVATION IS MARKED AS BEING 5966 FEET.

BASIS OF BEARINGS

BASIS OF BEARINGS IS A G.P.S. OBSERVATION.

T7S, R96W, 6th P.M.

1920, 1982 Brass Cap, 1.0' High, Pile of Stones
 Lat: 39.415767
 Long: 108.1055689

1316.18' (Meas.)
 1982 Alum. Cap, 0.2' High, Pile of Stones
 Lat: 39.415822
 Long: 108.101033

1316.04' (Meas.)
 1982 Alum. Cap, 0.3' High, Pile of Stones
 Lat: 39.415861
 Long: 108.096378

1342.62' (Meas.)
 1999 Private Alum. Cap, Flush W/ Cap, Pile of Stones, E-W Fenceline
 Lat: 39.412192
 Long: 108.096253

1743.62' (Meas.)
 1982 Alum. Cap, 0.2' High, Pile of Stones
 Lat: 39.408561
 Long: 108.086850

1920 Brass Cap, 1.4' High, Pile of Stones
 Lat: 39.415994
 Long: 108.087047

Alum. Cap, on 5/8" Rebar, Stamped MC Pile of Stones
 Lat: 39.413364
 Long: 108.086997

1743.62' (Meas.)

2621.96' (Meas.)
 1982 Brass Cap, 0.6' High, Pile of Stones
 Lat: 39.412103
 Long: 108.105528

1343.40' (Meas.)
 1982 Alum. Cap, 0.3' High, Pile of Stones
 Lat: 39.408506
 Long: 108.096117

1743.62' (Meas.)

1338.41' (Meas.)
 1982 Brass Cap, 1.1/2" Alum. Cap #5 Rebar, Fence Corner
 Lat: 39.408431
 Long: 108.105367

1342.62' (Meas.)
 1982 Alum. Cap, 0.2' High, E-W Fenceline
 Lat: 39.401264
 Long: 108.095869

1743.62' (Meas.)

1317.74' (Meas.)
 1982 Alum. Cap, 0.1' High, N-S Fenceline
 Lat: 39.401328
 Long: 108.086666

1342.62' (Meas.)

1743.62' (Meas.)

1318.32' (Meas.)
 1982 Alum. Cap, 0.1' High, N-S Fenceline
 Lat: 39.401328
 Long: 108.086666

1342.62' (Meas.)

1743.62' (Meas.)

1317.74' (Meas.)

1342.62' (Meas.)

1743.62' (Meas.)

1317.74' (Meas.)

1342.62' (Meas.)

1743.62' (Meas.)

1317.74' (Meas.)

1342.62' (Meas.)

1743.62' (Meas.)

1317.74' (Meas.)

1342.62' (Meas.)

1743.62' (Meas.)

1317.74' (Meas.)

1342.62' (Meas.)

1743.62' (Meas.)

1317.74' (Meas.)

1342.62' (Meas.)

1743.62' (Meas.)

1317.74' (Meas.)

1342.62' (Meas.)

1743.62' (Meas.)

1317.74' (Meas.)

1342.62' (Meas.)

1743.62' (Meas.)

1317.74' (Meas.)

1342.62' (Meas.)

1743.62' (Meas.)

1317.74' (Meas.)

1342.62' (Meas.)

1743.62' (Meas.)

1317.74' (Meas.)

1342.62' (Meas.)

1743.62' (Meas.)

1317.74' (Meas.)

1342.62' (Meas.)

1743.62' (Meas.)

1317.74' (Meas.)

1342.62' (Meas.)

1743.62' (Meas.)

1317.74' (Meas.)

1342.62' (Meas.)

1743.62' (Meas.)

1317.74' (Meas.)

1342.62' (Meas.)

1743.62' (Meas.)

1317.74' (Meas.)

1342.62' (Meas.)

1743.62' (Meas.)

1317.74' (Meas.)

1342.62' (Meas.)

1743.62' (Meas.)



SCALE

CERTIFICATE

THIS IS TO CERTIFY THAT THE ABOVE PLAT WAS PREPARED FROM FIELD NOTES OF ACTUAL SURVEYS MADE BY ME OR UNDER MY SUPERVISION AND THAT THE SAME ARE TRUE AND CORRECT TO THE BEST OF MY KNOWLEDGE AND BELIEF.



UTAH ENGINEERING & LAND SURVEYING
 85 SOUTH 200 EAST - VERNAL, UTAH 84078
 (435) 789-1017

SCALE	1" = 1000'	DATE SURVEYED:	02-28-11	DATE DRAWN:	11-26-12
PARTY	B.J. R.P. M.D.	REFERENCES	G.L.O. PLAT		
WEATHER	COLD	FILE	WPX ENERGY ROCKY MOUNTAIN, LLC		

NAD 83 (TARGET BOTTOM HOLE)	
LATITUDE = 39°24'32.03"	(39.408897)
LONGITUDE = 108°06'13.76"	(108.103822)
STATE PLANE-COLO. CENTRAL-NAD83	
N = 1584363.61	E = 2264391.55

NOTE:
 THE PROPOSED WELL HEAD FOR THIS WELL IS LOCATED IN THE NE 1/4 SE 1/4 OF SECTION 28, T7S, R96W, 6th P.M. AT A DISTANCE OF 2256' FSL 469' FEL IT BEARS S58°13'33"W 1049.65' FROM THE PROPOSED TARGET BOTTOM HOLE.

- LEGEND:**
- = 90° SYMBOL
 - = PROPOSED WELL HEAD.
 - ▲ = SECTION CORNERS LOCATED.