

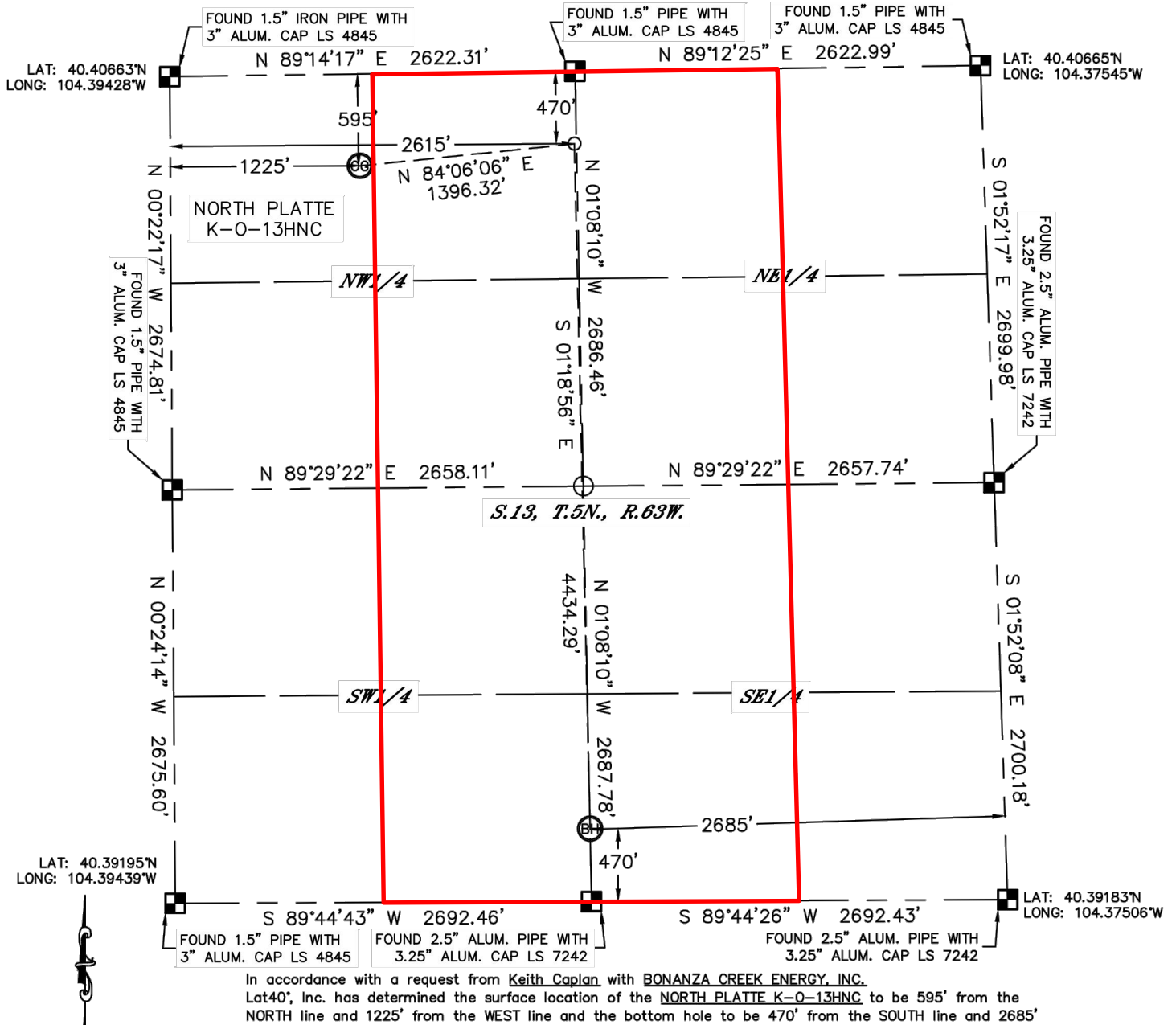


Lat40°, Inc. 1635 Foxtrail Drive, Suite 325 Loveland, CO 970-776-3321

WELL LOCATION CERTIFICATE

SECTION: 13
TOWNSHIP: 5N
RANGE: 63W

THIS MAP DOES NOT REPRESENT A BOUNDARY SURVEY



Wellbore Spacing Unit Outline



Wellbore Spacing Unit Map
14 February 2013 ksc

North Platte K-O-13HNC
E/2 W/2 & W/2 E/2 Sec 13 T5N R63W 6th PM
Weld County, Colorado