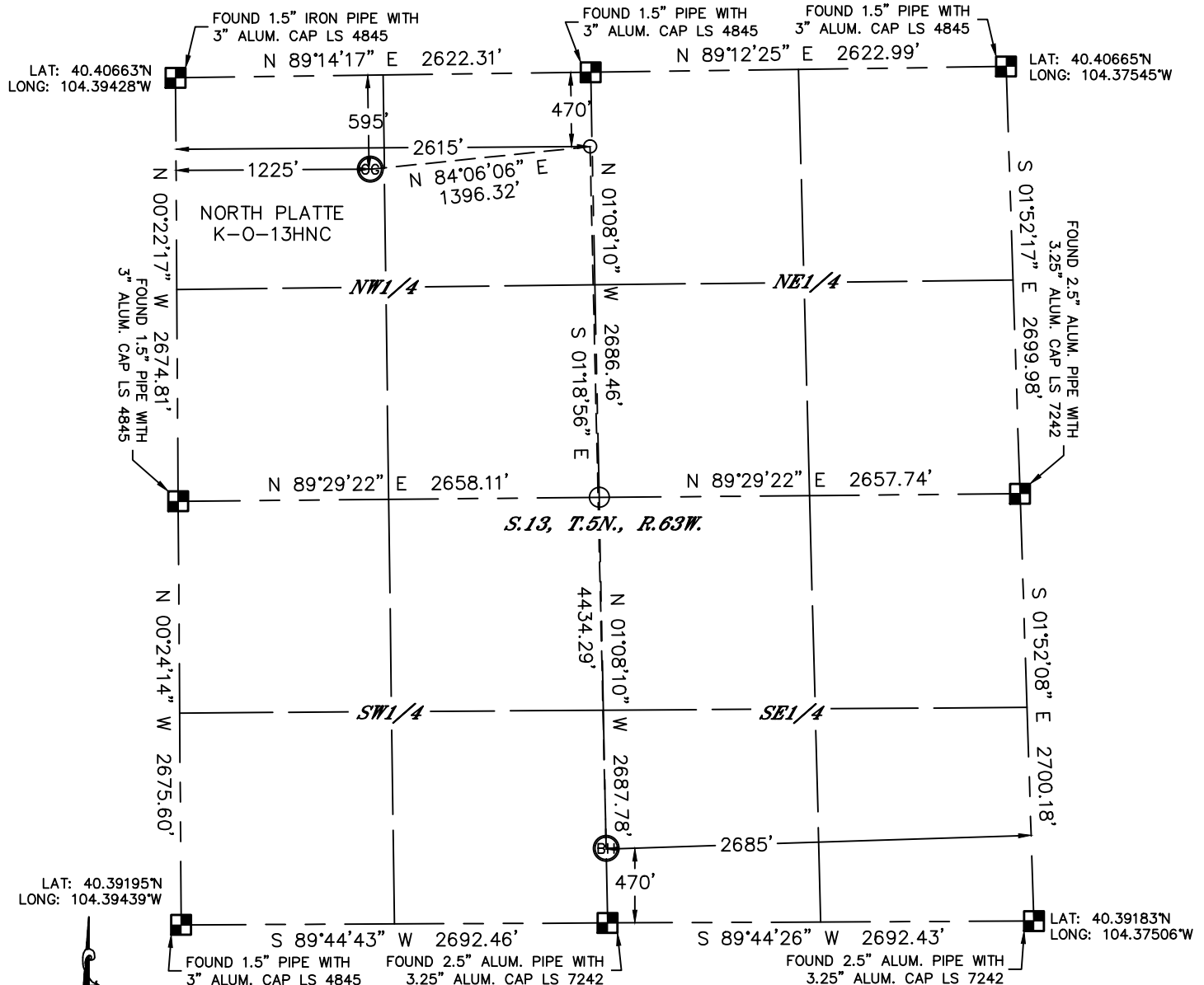


Lat40°, Inc. 1635 Foxtrail Drive, Suite 325 Loveland, CO 970-776-3321

# WELL LOCATION CERTIFICATE

SECTION: 13  
TOWNSHIP: 5N  
RANGE: 63W

THIS MAP DOES NOT REPRESENT A BOUNDARY SURVEY



In accordance with a request from Keith Caplan with BONANZA CREEK ENERGY, INC. Lat40<sup>+</sup>, Inc. has determined the surface location of the NORTH PLATTE K-0-13HNC to be 595' from the NORTH line and 1225' from the WEST line and the bottom hole to be 470' from the SOUTH line and 2685' from the WEST line as measured at right angles from the section lines of Section 13, Township 5 North, Range 63 West of the Sixth Principal Meridian, County of Weld, State of Colorado.

I hereby state that this Well Location Certificate was prepared by me, or under my direct supervision, that the fieldwork was completed on 10/24/12, for and on behalf of BONANZA CREEK ENERGY, INC.. That this is not a Land Survey Plat or an Improvement Survey Plat, and that it is not to be relied upon for establishment of fence, building, or other future improvement lines.

**NOTE:**

- 1) Bearings shown are Grid Bearings of the Colorado State Plane Coordinate System, North Zone, North American Datum 1983/2007. The lineal dimensions as contained herein are based upon the "U.S. Survey Foot."
- 2) Ground elevations are based on an observed GPS elevation (NAVD 1988 DATUM).
- 3) IMPROVEMENTS: See LOCATION DRAWING for all visible improvements within 400' of disturbed area.
- 4) SURFACE USE: RANGELAND
- 5) INSTRUMENT OPERATOR: BRIAN ROTTINGHAUS

## SURFACE LOCATION

LATITUDE: 40.40500°N  
LONGITUDE: 104.38989  
PDOP: 1.7  
ELEV: 4630'  
1/4,1/4: NW1/4NW1/4  
NEAREST PROPERTY LI

TARGET

LATITUDE: 40.40535°N  
W LONGITUDE: 104.38490  
1/4, 1/4: NE1/4NW1/4



BOTTOM HOLE

LATITUDE: 40.39318°N  
LONGITUDE: 104.38473°W  
1/4, 1/4: SW 1/4 SE 1/4

NOTE

NOTE  
According to Colorado law, you must commence any legal action based upon any defect in this W.L.C. within three years after you discover such defect. In no event, may any action based upon any defect in this survey be commenced more than ten years after the date of the certificate shown hereon. (13-80-105 C.R.S.)

### LEGEND

-  = ALIQUOT MONUMENT AS DESCRIBED  
 = CALCULATED POSITION

Kyle E. Rutz—On behalf of Ed401, Inc.

Colorado Licensed Professional Land Surveyor No. 38307 DATE: 10/29/12 PROJECT#: 2012003

