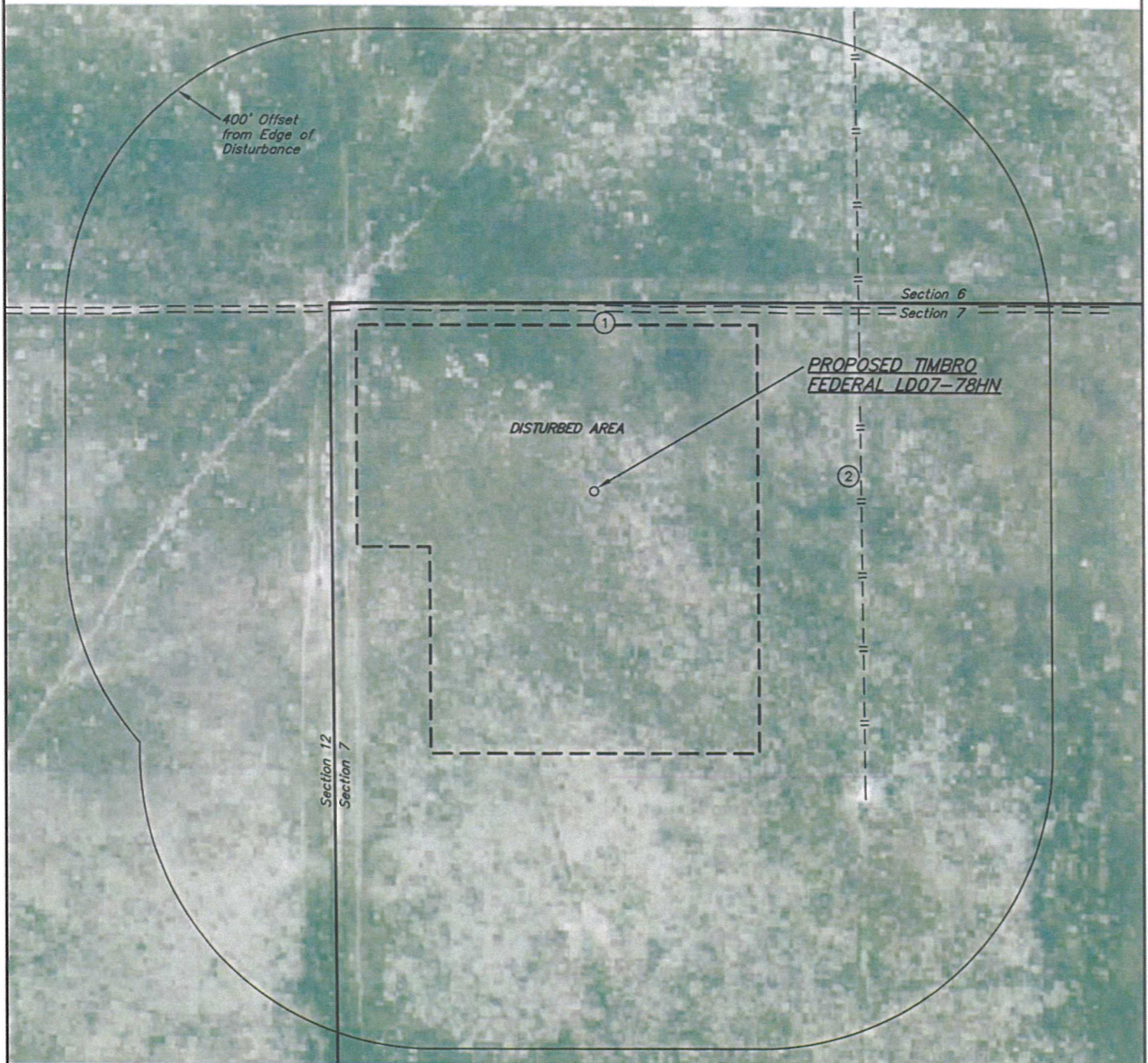


NOBLE ENERGY, INC.

LOCATION DRAWING

TIMBRO FEDERAL LD07-78HN
SECTION 7, T9N, R58W, 6th P.M.

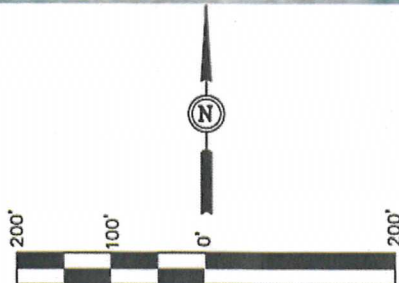
DATE: 10-04-12
DRAWN BY: H.K.W.



IMPROVEMENTS:

- ① 2-TRACK 248' N
- ② UNDERGROUND UTILITY 366' E

NOTE:
DIRECTION AND DISTANCE TO IMPROVEMENTS
AND NEAREST FEATURES ARE FROM PROPOSED
TIMBRO FEDERAL LD07-78HN.



NEAREST FEATURE: BUILDING 5280' +, PUBLIC ROAD
5280' + (CR 119), ABOVE GROUND UTILITY 5280' +,
RAILROAD 5280' +, PROPERTY LINE 255' N

UINTAH ENGINEERING & LAND SURVEYING
85 So. 200 East * Vernal, Utah 84078 * (435) 789-1017