

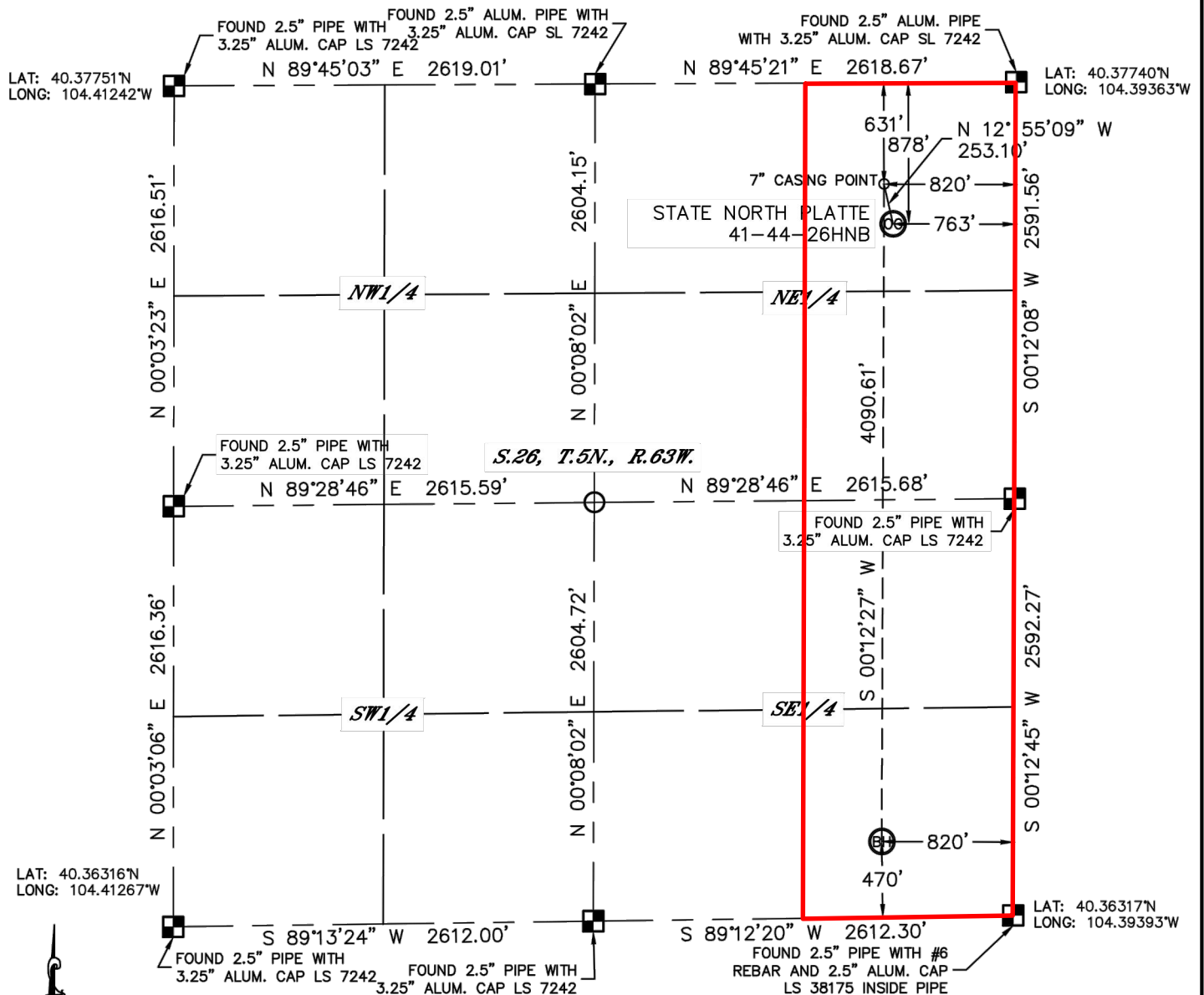


Lat40°, Inc. 1635 Foxtrail Drive, Suite 325 Loveland, CO 970-776-3321

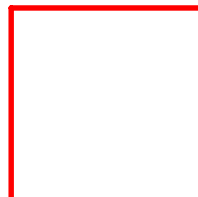
## WELL LOCATION CERTIFICATE

THIS MAP DOES NOT REPRESENT A BOUNDARY SURVEY

SECTION: 26  
TOWNSHIP: 5N  
RANGE: 63W



In accordance with a request from Michael Meagher with BONANZA CREEK ENERGY, INC., Lat40°, Inc. has determined the surface location of the STATE NORTH PLATTE 41-44-26HNB to be 878' from the NORTH line and 763' from the EAST line and the bottom hole to be 470' from the SOUTH line and 820' from the EAST line as measured at right angles from the section lines of Section 26, Township 5



Wellbore Spacing Unit Outline



### Wellbore Spacing Unit Map

14 February 2013 ksc

State North Platte 41-44-26HNB  
E/2 E/2 Sec 26 T5N R63W 6th PM  
Weld County, Colorado