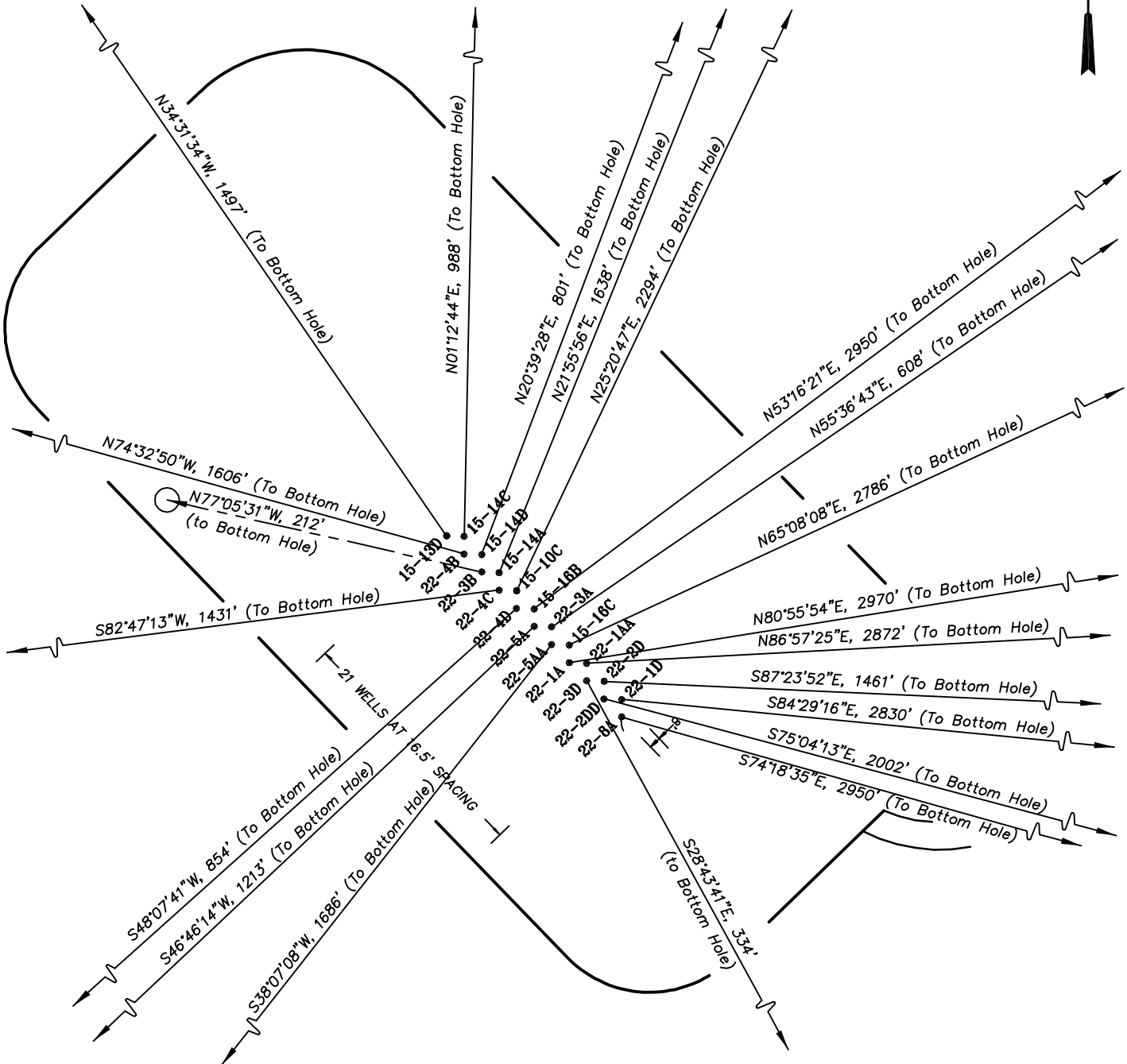
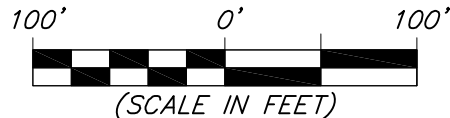


Encana Oil & Gas (USA) Inc.
 Well Pad (PC-22)
 Section 22, T7S, R95W, 6th P.M.
 WELL PAD INTERFERENCE PLAT



**See Sheets 2a & 2b
 for Additional Details**



906 Main Street
 Evanston, Wyoming 82930
 Phone No. (307) 789-4545

| | | | |
|--------------------------|-----------|-------------------------------|--|
| <i>Interference Plat</i> | | Scale: 1" = 100' | SHEET 2 OF 10 |
| Project No. | 07-04-103 | Date Surveyed: 9/27/07 | |
| Date Drawn: | 1/27/08 | Latest Revision Date: 1/21/13 | |

Encana Oil & Gas (USA) Inc.
 Well Pad (PC-22)
 Section 22, T7S, R95W, 6th P.M.
 WELL PAD INTERFERENCE PLAT

| | |
|-----------------------------|-------------------------|
| HAGEN FEDERAL 22-8A | |
| NAD 83 (SURFACE LOCATION) | NAD 83 (BOTTOM HOLE) |
| LATITUDE = 39.428400° | LATITUDE = 39.426234° |
| LONGITUDE = 107.986289° | LONGITUDE = 107.976229° |
| HAGEN FEDERAL 22-2DD | |
| NAD 83 (SURFACE LOCATION) | NAD 83 (BOTTOM HOLE) |
| LATITUDE = 39.428432° | LATITUDE = 39.427033° |
| LONGITUDE = 107.986329° | LONGITUDE = 107.979478° |
| HAGEN 22-3D | |
| NAD 83 (SURFACE LOCATION) | NAD 83 (BOTTOM HOLE) |
| LATITUDE = 39.428465° | LATITUDE = 39.427663° |
| LONGITUDE = 107.986370° | LONGITUDE = 107.985799° |
| HAGEN FEDERAL 22-1A | |
| NAD 83 (SURFACE LOCATION) | NAD 83 (BOTTOM HOLE) |
| LATITUDE = 39.428497° | LATITUDE = 39.429806° |
| LONGITUDE = 107.986411° | LONGITUDE = 107.976035° |
| HAGEN FEDERAL 22-5AA | |
| NAD 83 (SURFACE LOCATION) | NAD 83 (BOTTOM HOLE) |
| LATITUDE = 39.428530° | LATITUDE = 39.424880° |
| LONGITUDE = 107.986451° | LONGITUDE = 107.990120° |
| HAGEN FEDERAL 22-5A | |
| NAD 83 (SURFACE LOCATION) | NAD 83 (BOTTOM HOLE) |
| LATITUDE = 39.428562° | LATITUDE = 39.426274° |
| LONGITUDE = 107.986492° | LONGITUDE = 107.989611° |
| HAGEN FEDERAL 22-4D | |
| NAD 83 (SURFACE LOCATION) | NAD 83 (BOTTOM HOLE) |
| LATITUDE = 39.428595° | LATITUDE = 39.427024° |
| LONGITUDE = 107.986533° | LONGITUDE = 107.988778° |
| HAGEN FEDERAL 22-4C | |
| NAD 83 (SURFACE LOCATION) | NAD 83 (BOTTOM HOLE) |
| LATITUDE = 39.428627° | LATITUDE = 39.428122° |
| LONGITUDE = 107.986574° | LONGITUDE = 107.991595° |
| HAGEN 22-3B | |
| NAD 83 (SURFACE LOCATION) | NAD 83 (BOTTOM HOLE) |
| LATITUDE = 39.428659° | LATITUDE = 39.428787° |
| LONGITUDE = 107.986614° | LONGITUDE = 107.987344° |
| HAGEN FEDERAL 22-4B | |
| NAD 83 (SURFACE LOCATION) | NAD 83 (BOTTOM HOLE) |
| LATITUDE = 39.428692° | LATITUDE = 39.429853° |
| LONGITUDE = 107.986655° | LONGITUDE = 107.992139° |
| HAGEN 15-13D | |
| NAD 83 (SURFACE LOCATION) | NAD 83 (BOTTOM HOLE) |
| LATITUDE = 39.428724° | LATITUDE = 39.432102° |
| LONGITUDE = 107.986696° | LONGITUDE = 107.989712° |

| | |
|-----------------------------|-------------------------|
| HAGEN FEDERAL 22-1D | |
| NAD 83 (SURFACE LOCATION) | NAD 83 (BOTTOM HOLE) |
| LATITUDE = 39.428431° | LATITUDE = 39.427709° |
| LONGITUDE = 107.986289° | LONGITUDE = 107.976317° |
| HAGEN FEDERAL 22-2D | |
| NAD 83 (SURFACE LOCATION) | NAD 83 (BOTTOM HOLE) |
| LATITUDE = 39.428464° | LATITUDE = 39.428294° |
| LONGITUDE = 107.986329° | LONGITUDE = 107.981165° |
| HAGEN FEDERAL 22-1AA | |
| NAD 83 (SURFACE LOCATION) | NAD 83 (BOTTOM HOLE) |
| LATITUDE = 39.428496° | LATITUDE = 39.428938° |
| LONGITUDE = 107.986370° | LONGITUDE = 107.976221° |
| HAGEN FEDERAL 15-16C | |
| NAD 83 (SURFACE LOCATION) | NAD 83 (BOTTOM HOLE) |
| LATITUDE = 39.428529° | LATITUDE = 39.431764° |
| LONGITUDE = 107.986411° | LONGITUDE = 107.977479° |
| HAGEN 22-3A | |
| NAD 83 (SURFACE LOCATION) | NAD 83 (BOTTOM HOLE) |
| LATITUDE = 39.428561° | LATITUDE = 39.429508° |
| LONGITUDE = 107.986452° | LONGITUDE = 107.984679° |
| HAGEN FEDERAL 15-16B | |
| NAD 83 (SURFACE LOCATION) | NAD 83 (BOTTOM HOLE) |
| LATITUDE = 39.428594° | LATITUDE = 39.433454° |
| LONGITUDE = 107.986492° | LONGITUDE = 107.978144° |
| HAGEN CLEM 15-10C | |
| NAD 83 (SURFACE LOCATION) | NAD 83 (BOTTOM HOLE) |
| LATITUDE = 39.428626° | LATITUDE = 39.434325° |
| LONGITUDE = 107.986533° | LONGITUDE = 107.983079° |
| HAGEN 15-14A | |
| NAD 83 (SURFACE LOCATION) | NAD 83 (BOTTOM HOLE) |
| LATITUDE = 39.428659° | LATITUDE = 39.432833° |
| LONGITUDE = 107.986574° | LONGITUDE = 107.984425° |
| HAGEN 15-14D | |
| NAD 83 (SURFACE LOCATION) | NAD 83 (BOTTOM HOLE) |
| LATITUDE = 39.428691° | LATITUDE = 39.430750° |
| LONGITUDE = 107.986614° | LONGITUDE = 107.985623° |
| HAGEN 15-14C | |
| NAD 83 (SURFACE LOCATION) | NAD 83 (BOTTOM HOLE) |
| LATITUDE = 39.428723° | LATITUDE = 39.431435° |
| LONGITUDE = 107.986655° | LONGITUDE = 107.986592° |

**See Sheet 2 & 2b
 for Additional Details**



906 Main Street
 Evanston, Wyoming 82930
 Phone No. (307) 789-4545

| | | | | |
|--------------------------|-----------|-----------------------|-------------------------------|---------|
| <i>Interference Plat</i> | | <i>Scale: none</i> | SHEET 2a OF 10 | |
| Project No. | 07-04-103 | Date Surveyed: | | 9/27/07 |
| Date Drawn: | 1/27/08 | Latest Revision Date: | | 1/21/13 |

Encana Oil & Gas (USA) Inc.
 Well Pad (PC-22)
 Section 22, T7S, R95W, 6th P.M.
 WELL PAD INTERFERENCE PLAT

| RELATIVE COORDINATES From top hole to bottom hole | | |
|--|-------|-------|
| WELL | NORTH | EAST |
| 22-8A | -798 | 2840 |
| 22-2DD | -516 | 1934 |
| 22-3D | -293 | 161 |
| 22-1A | 468 | 2933 |
| 22-5AA | -1326 | -1041 |
| 22-5A | -831 | -884 |
| 22-4D | -570 | -636 |
| 22-4C | -180 | -1420 |
| 22-3B | 47 | -207 |
| 22-4B | 428 | -1548 |
| 15-13D | 1233 | -848 |
| 22-1D | -272 | 2817 |
| 22-2D | -66 | 1459 |
| 22-1AA | 152 | 2868 |
| 15-16C | 1171 | 2528 |
| 22-3A | 343 | 502 |
| 15-16B | 1764 | 2364 |
| 15-10C | 2073 | 982 |
| 15-14A | 1519 | 612 |
| 15-14D | 749 | 283 |
| 15-14C | 988 | 21 |

TOP HOLE FOOTAGES

HAGEN FEDERAL 22-8A (PC-22)
678' FNL & 1831' FWL
 HAGEN FEDERAL 22-2DD (PC-22)
666' FNL & 1819' FWL
 HAGEN 22-3D (PC-22)
654' FNL & 1808' FWL
 HAGEN FEDERAL 22-1A (PC-22)
642' FNL & 1797' FWL
 HAGEN FEDERAL 22-5AA (PC-22)
631' FNL & 1785' FWL
 HAGEN FEDERAL 22-5A (PC-22)
619' FNL & 1774' FWL
 HAGEN FEDERAL 22-4D (PC-22)
607' FNL & 1762' FWL
 HAGEN FEDERAL 22-4C (PC-22)
596' FNL & 1751' FWL
 HAGEN 22-3B (PC-22)
584' FNL & 1740' FWL
 HAGEN FEDERAL 22-4B (PC-22)
572' FNL & 1728' FWL
 HAGEN 15-13D (PC-22)
561' FNL & 1717' FWL
 HAGEN FEDERAL 22-1D (PC-22)
666' FNL & 1831' FWL
 HAGEN FEDERAL 22-2D (PC-22)
654' FNL & 1819' FWL
 HAGEN FEDERAL 22-1AA (PC-22)
643' FNL & 1808' FWL
 HAGEN FEDERAL 15-16C (PC-22)
631' FNL & 1797' FWL
 HAGEN 22-3A (PC-22)
619' FNL & 1785' FWL
 HAGEN FEDERAL 15-16B (PC-22)
608' FNL & 1774' FWL
 HAGEN CLEM 15-10C (PC-22)
596' FNL & 1762' FWL
 HAGEN 15-14A (PC-22)
584' FNL & 1751' FWL
 HAGEN 15-14D (PC-22)
572' FNL & 1740' FWL
 HAGEN 15-14C (PC-22)
561' FNL & 1728' FWL

**See Sheet 2 & 2a
 for Additional Details**



906 Main Street
 Evanston, Wyoming 82930
 Phone No. (307) 789-4545

| | | | | |
|--------------------------|-----------|-----------------------|-------------------------------|---------|
| <i>Interference Plat</i> | | Scale: none | SHEET 2b OF 10 | |
| Project No. | 07-04-103 | Date Surveyed: | | 9/27/07 |
| Date Drawn: | 1/27/08 | Latest Revision Date: | | 1/21/13 |