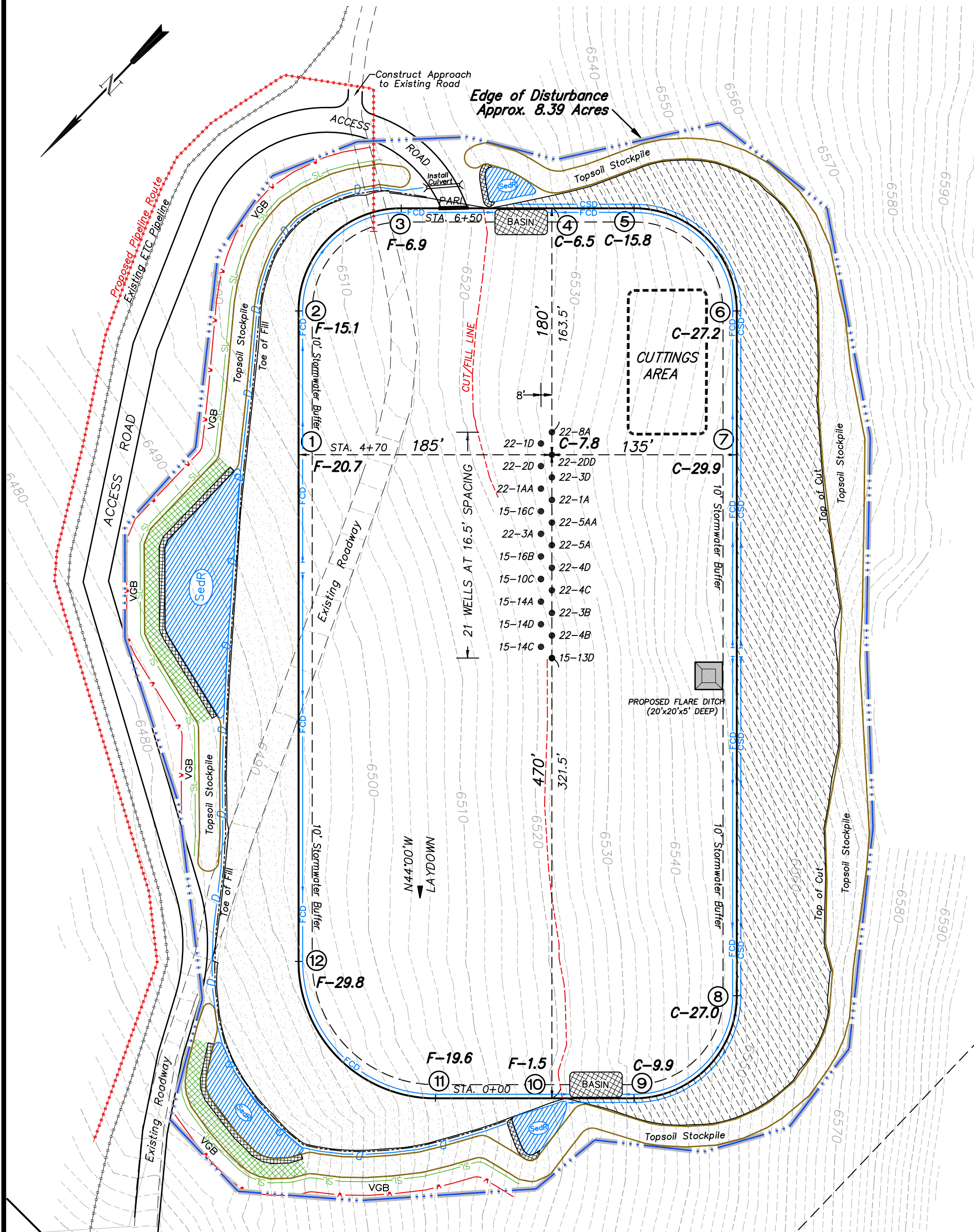


Encana Oil & Gas (USA) Inc. PC-22 Well Pad

NE1/4 NW1/4, SECTION 22, T7S, R95W, 6th P.M.
WELL PAD LAYOUT

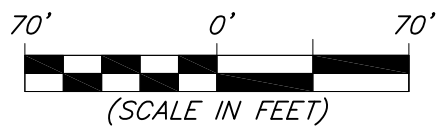


Total Surface Disturbance = 8.39 Acres
(See Sheet 4 for Details)

- NOTES:
- (1) Slope Track and/or Terrace all Slopes and Piles
 - (2) Erosion Control & Seed Topsoil
 - (3) Erosion Control & Seed Outside
 - (4) Slope away from Substructure Areas 1% to 3% to Flow Control

- LEGEND**
- SL- SLASH
 - ST SEDIMENT TRAP
 - SedR SEDIMENT RESERVOIR
 - R.O.D. RUN-ON DIVERSION
 - W- PERIMETER CONTROL (WATTLES)
 - CSD CUT SLOPE DIVERSION (BERM TOE OF CUT SLOPE)
 - D FILL DIVERSION TO SEDIMENT TRAP
 - VGB VEGETATION BUFFER (UNDISTURBED LAND INSIDE PC)
 - FCD FLOW CONTROL DITCH
 - PARI PAD/ACCESS ROAD INTERFACE
 - LEVEL SPREADER
 - TOE BERM (PLACED AT TOE OF ALL FILL SLOPES/STOCKPILES)
 - TOPSOIL BERM
 - SEED, ECB & FLEX
 - SEED

Elev. Ungraded Ground At 22-2DD Well Loc. Stake = 6529.1'
FINISHED GRADE ELEV. AT 22-2DD WELL LOC. STAKE = 6521.3'

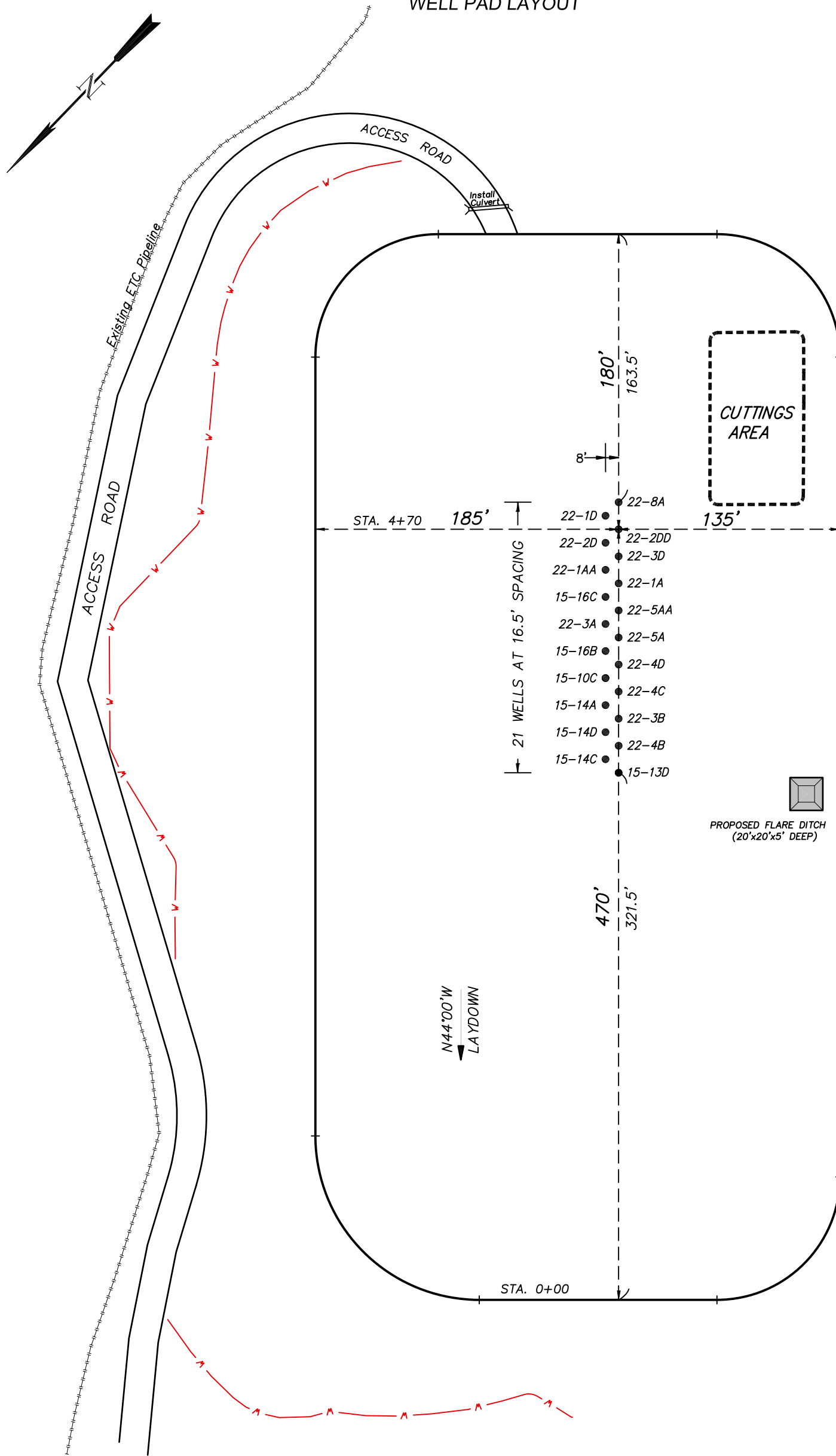


906 Main Street
Evanston, Wyoming 82930
Phone No. (307) 789-4545

Well Pad Layout		Scale: 1" = 70'	SHEET
Project No.	07-04-103	Date Surveyed:	3
Date Drawn:	12/12/12	Latest Revision Date:	OF 10
			1/21/13

Encana Oil & Gas (USA) Inc. PC-22 Well Pad

NE1/4 NW1/4, SECTION 22, T7S, R95W, 6th P.M.
WELL PAD LAYOUT



Total Surface Disturbance = **8.39 Acres**
(See Sheet 4 for Details)

- NOTES:
- (1) Slope Track and/or Terrace all Slopes and Piles
 - (2) Erosion Control & Seed Topsoil
 - (3) Erosion Control & Seed Outside
 - (4) Slope away from Substructure Areas 1% to 3% to Flow Control

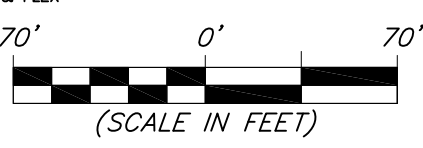
- LEGEND**
- SL— = SLASH
 - ST = SEDIMENT TRAP
 - SedR = SEDIMENT RESERVOIR
 - R.O.D. = RUN-ON DIVERSION
 - W- = PERIMETER CONTROL (WATTLES)
 - CSD = CUT SLOPE DIVERSION (BERM TOE OF CUT SLOPE)
 - D = FILL DIVERSION TO SEDIMENT TRAP
 - VCB = VEGETATION BUFFER (UNDISTURBED LAND INSIDE PC)
 - FCD = FLOW CONTROL DITCH
 - PARI = PAD/ACCESS ROAD INTERFACE
 - [Pattern] = LEVEL SPREADER
 - [Pattern] = TOE BERM (PLACED AT TOE OF ALL FILL SLOPES/STOCKPILES)
 - [Pattern] = TOPSOIL BERM
 - [Pattern] = SEED, ECB & FLEX
 - [Pattern] = SEED

PRE-CONSTRUCTION PHASE COMPLETE,
AUTHORIZATION TO CONTINUE
CONSTRUCTION.

SIGNATURE: _____



906 Main Street
Evanston, Wyoming 82930
Phone No. (307) 789-4545



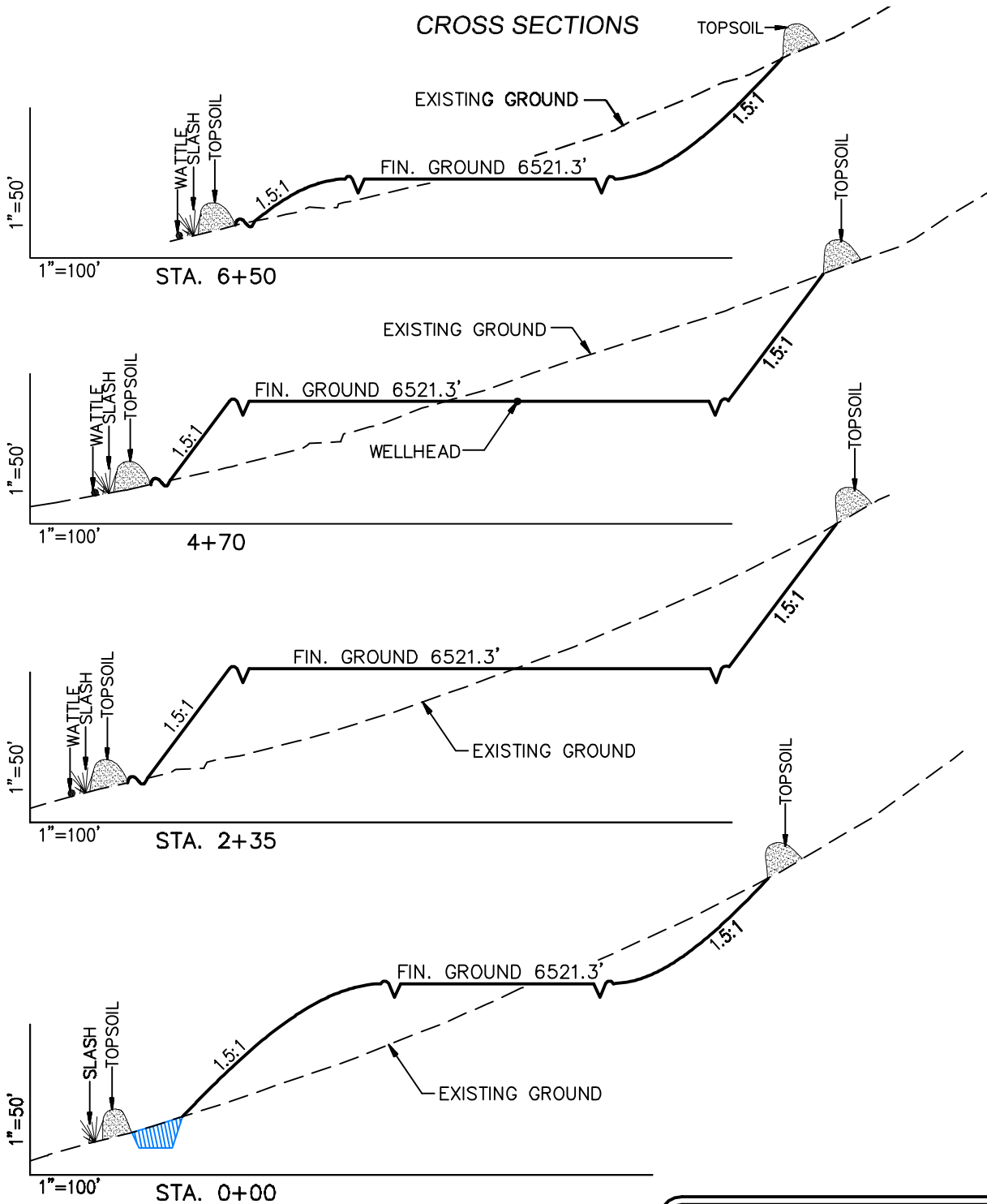
Pre-Construction		Scale: 1" = 70'
Project No.	07-04-103	Date Surveyed: 9/27/07
Date Drawn:	1/27/08	Latest Revision Date: 1/21/13

SHEET
3a
OF 10

Encana Oil & Gas (USA) Inc.

PC-22 Well Pad

CROSS SECTIONS



SURFACE DISTURBANCE (IN ACRES)

Well Pad	4.64
Side Slopes	2.00
Stockpiles & Stormwater	1.75
TOTAL	8.39

NOTE:
ALL CUT AND FILL
SLOPES ARE AT 1.5:1
UNLESS OTHERWISE
NOTED.

EARTHWORK QUANTITIES

(in Cubic Yards w/ 0% shrink/swell)

ITEM	CUT	FILL	6" TOPSOIL	EXCESS
PAD	73,000	70,000	Topsoil not included in Excavation	3000
PIT	0	0		0
TOTALS	73,000	70,000	5350	3000

Cross Sections

Scale: As Shown

SHEET

Project No. 07-04-103

Date Surveyed: 9/27/07

4

Date Drawn: 1/27/08

Latest Revision Date: 1/21/13

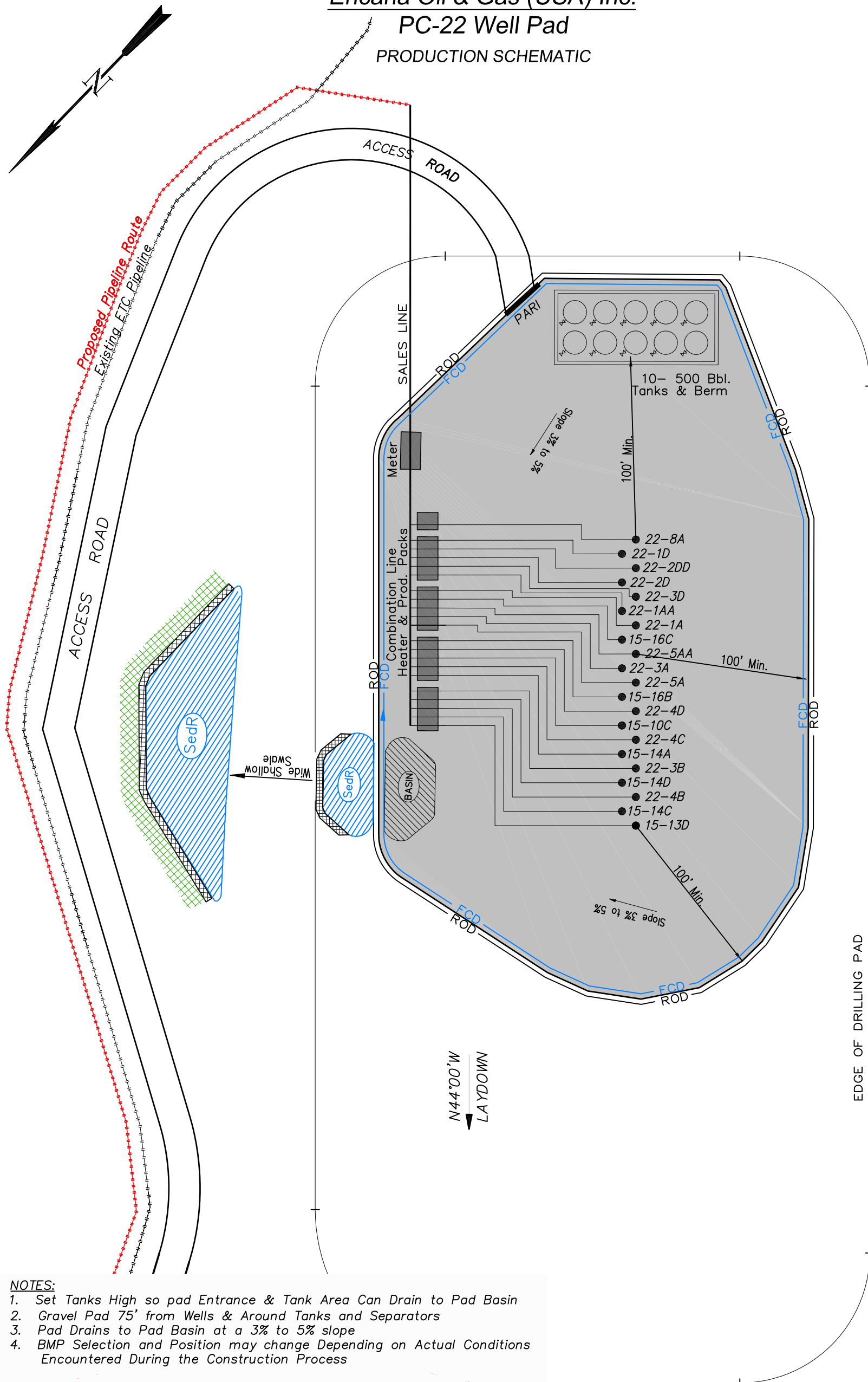
OF 10



906 Main Street
Evanston, Wyoming 82930
Phone No. (307) 789-4545

Encana Oil & Gas (USA) Inc.

PC-22 Well Pad
PRODUCTION SCHEMATIC



NOTES:

1. Set Tanks High so pad Entrance & Tank Area Can Drain to Pad Basin
2. Gravel Pad 75' from Wells & Around Tanks and Separators
3. Pad Drains to Pad Basin at a 3% to 5% slope
4. BMP Selection and Position may change Depending on Actual Conditions Encountered During the Construction Process

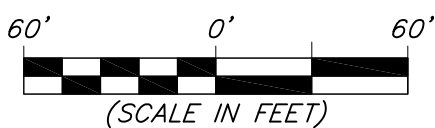
NOTE:

Actual Equipment Layout and Reclaimed Pad Surface Area May Change due to Production Requirements or Site Conditions.

ESTIMATED AREAS
RECLAIMED AREA: 6.4 ACRES
UNRECLAIMED AREA: 2.0 ACRES
(Production Pad)

LEGEND

- SedR = SEDIMENT RESERVOIR
- R.O.D. = RUN-ON DIVERSION
- W- = PERIMETER CONTROL (WATTLES)
- CSD = CUT SLOPE DIVERSION (BERM TOE OF CUT SLOPE)
- D = FILL DIVERSION TO SEDIMENT TRAP
- VGB = VEGETATION BUFFER (UNDISTURBED LAND INSIDE PC)
- FCD = FLOW CONTROL DITCH
- PARI = PAD/ACCESS ROAD INTERFACE
- [Cross-hatched] = LEVEL SPREADER
- [Green hatched] = SEED, ECB & FLEX
- [Red hatched] = SEED

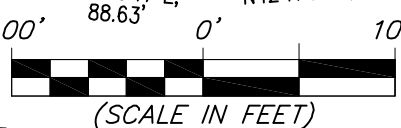
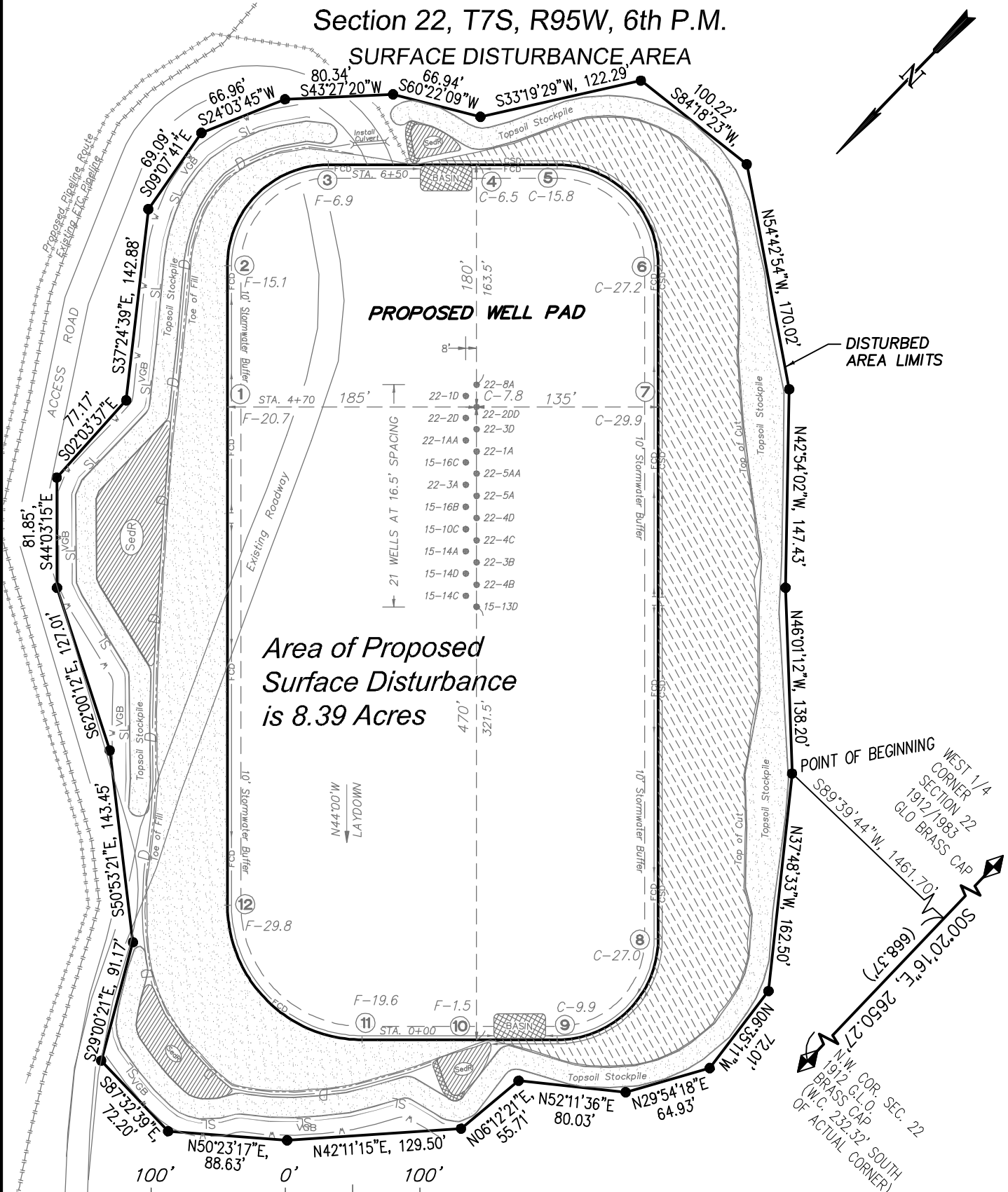
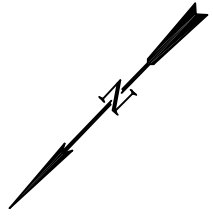


Production Schematic		Scale: 1" = 60'	SHEET
Project No.	07-04-103	Date Surveyed:	9/27/07
Date Drawn:	1/27/08	Latest Revision Date:	1/21/13
			6 OF 10



906 Main Street
Evanston, Wyoming 82930
Phone No. (307) 789-4545

Encana Oil & Gas (USA) Inc.
 PC-22 Well Pad
 Section 22, T7S, R95W, 6th P.M.
 SURFACE DISTURBANCE AREA



906 Main Street
 Evanston, Wyoming 82930
 Phone No. (307) 789-4545

<i>Surface Disturbance</i>		Scale: 1" = 100'	SHEET
Project No.	07-04-103	Date Surveyed:	9/27/07
Date Drawn:	1/27/08	Latest Revision Date:	1/21/13
			7 OF 10