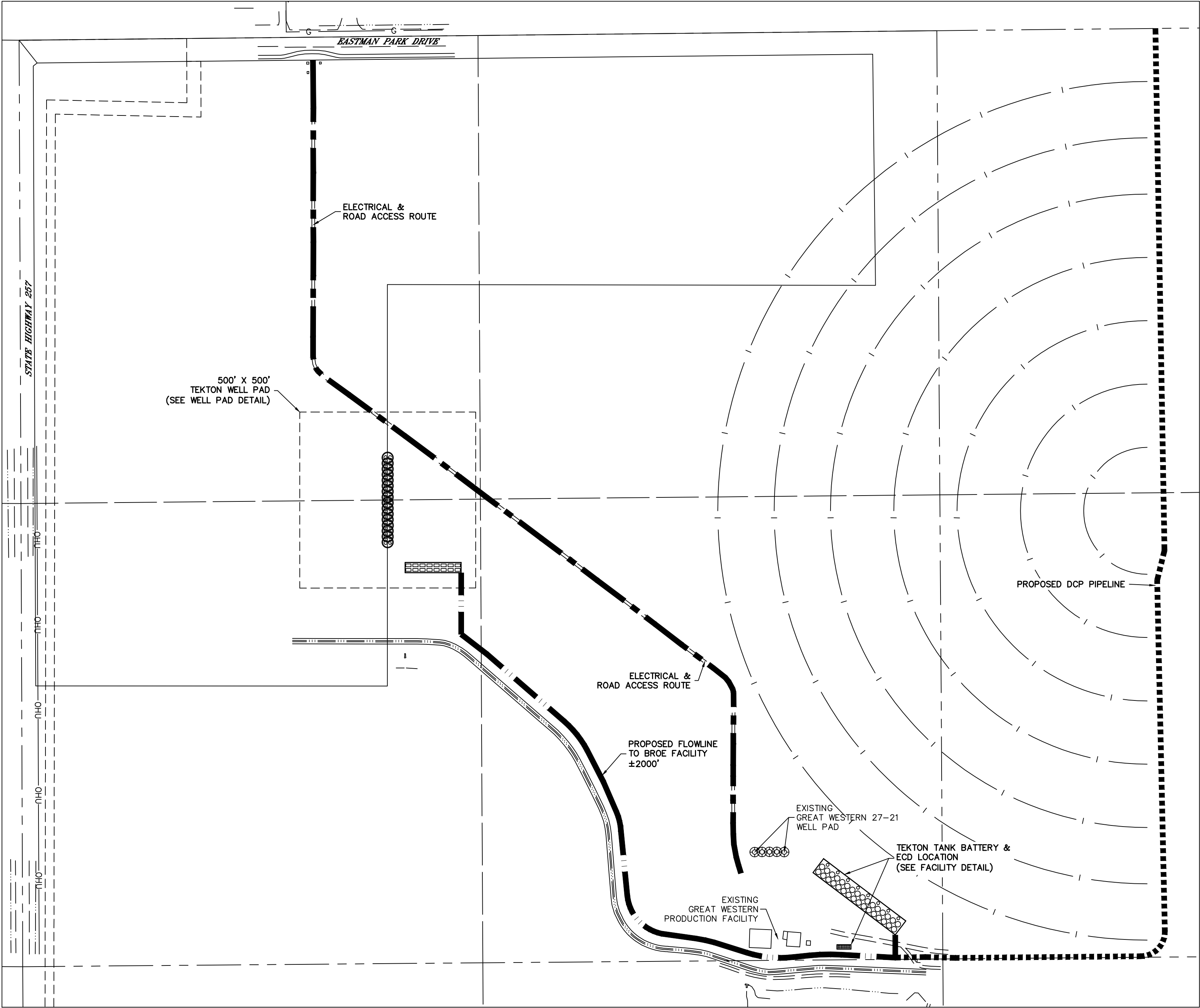
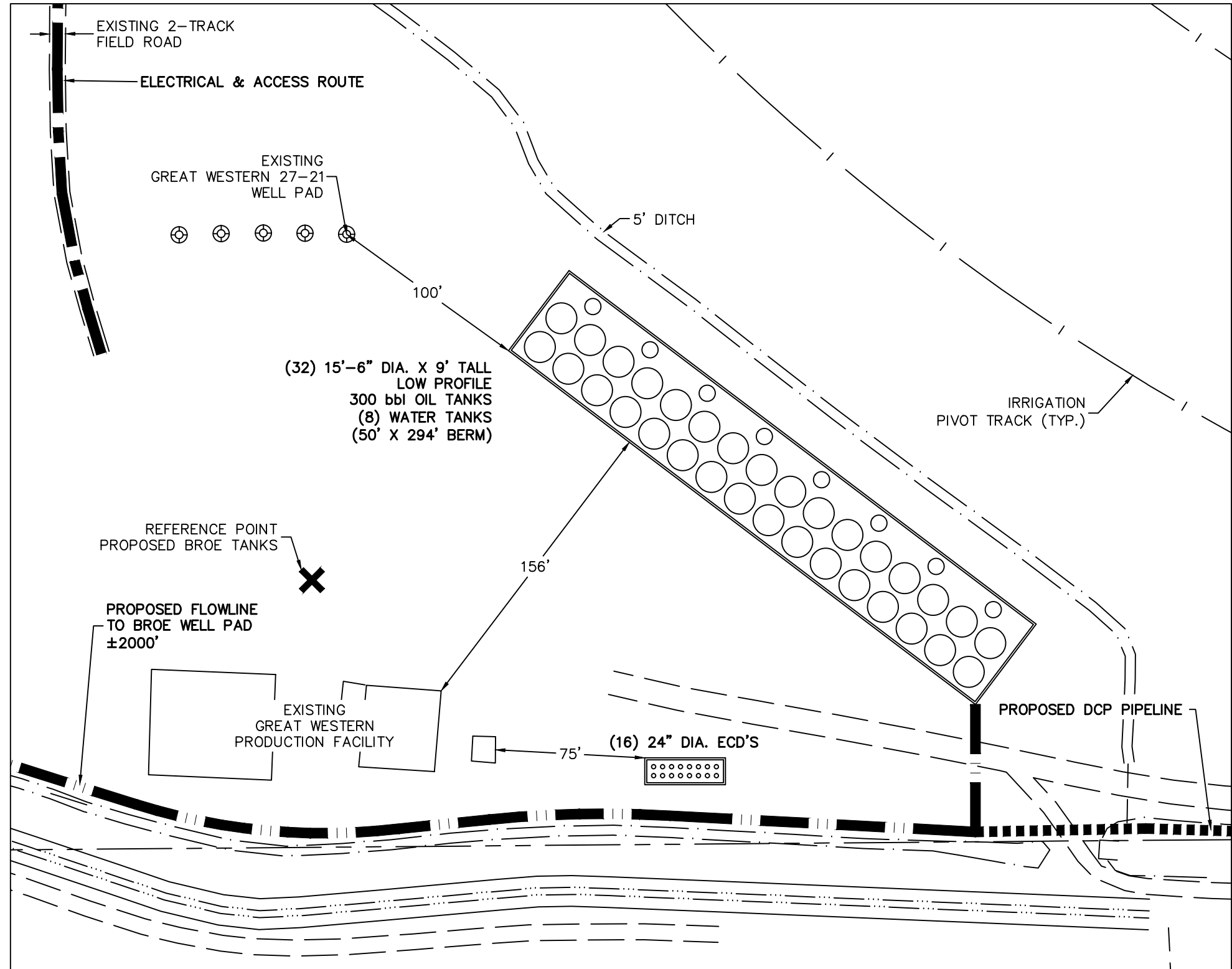
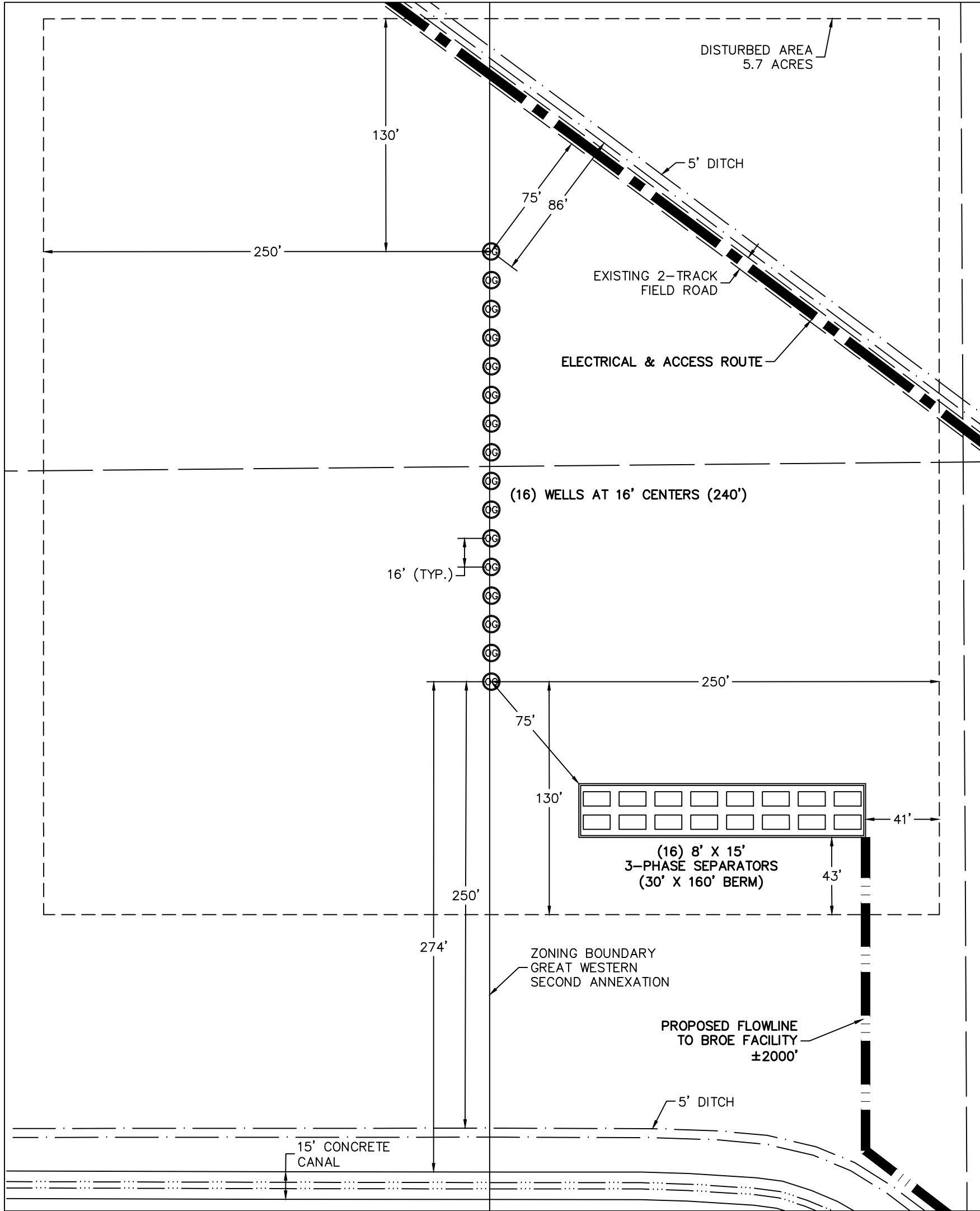


BROE FACILITY DETAIL

A PORTION OF THE NORTHWEST QUARTER (NW1/4) OF
SECTION 27, TOWNSHIP 6 NORTH, RANGE 67 WEST OF THE 6TH P.M.
(GREAT WESTERN 2ND ANNEXATION) TOWN OF WINDSOR,
COUNTY OF WELD, STATE OF COLORADO

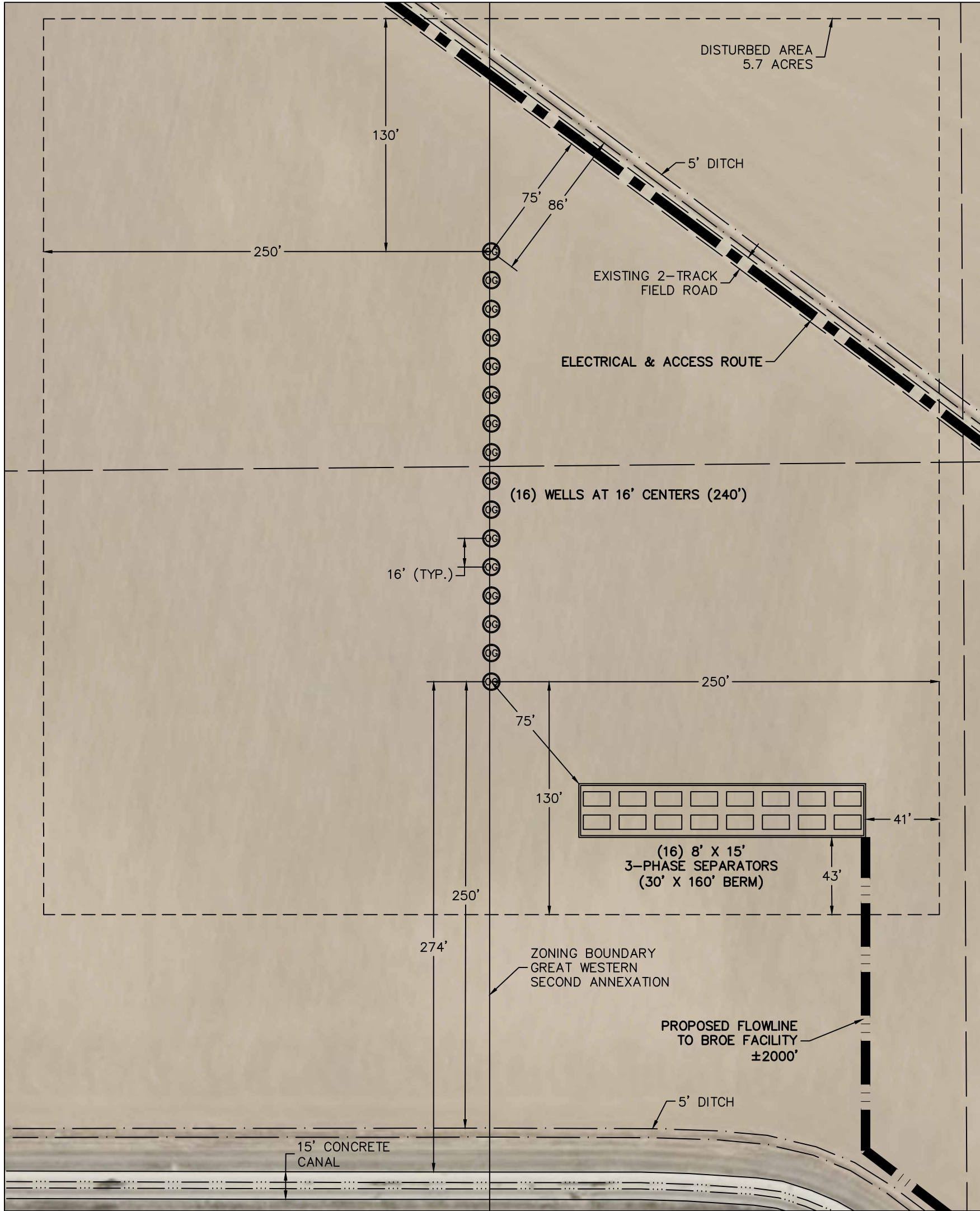


Lat40°, Inc.
Professional Land Surveyors
1635 Foxtrail Drive, Suite 325
Loveland, CO 80537
O: 970-776-3321

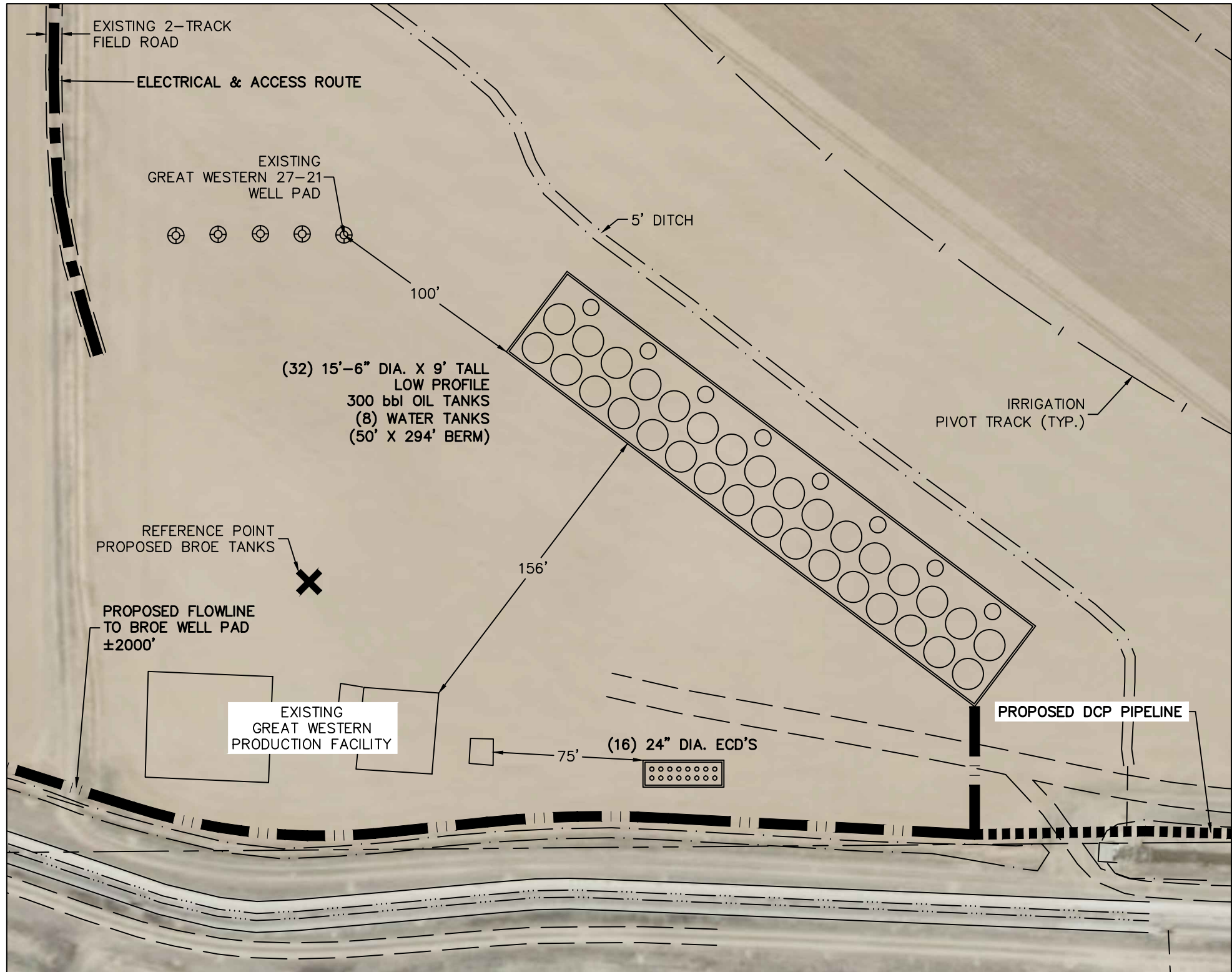
DATE: 12/11/12	FILE NAME: 2012167WELL.dwg	DRAWN BY: BTB	CHECKED BY: BTB	SCALE: AS NOTED	PROJECT #: 2012167
REVISIONS:		DATE:		BROE FACILITY DETAIL FOR TEKTON ENERGY, LLC 640 PLAZA DRIVE, SUITE 290 HIGHLANDS RANCH, CO 80129	
REVISE FLOWLINES		BTB	12/21/2012		
ADD OPERATIONS MAP		BTB	12/21/2012		
					1 SHEET 1 OF 1

BROE FACILITY DETAIL

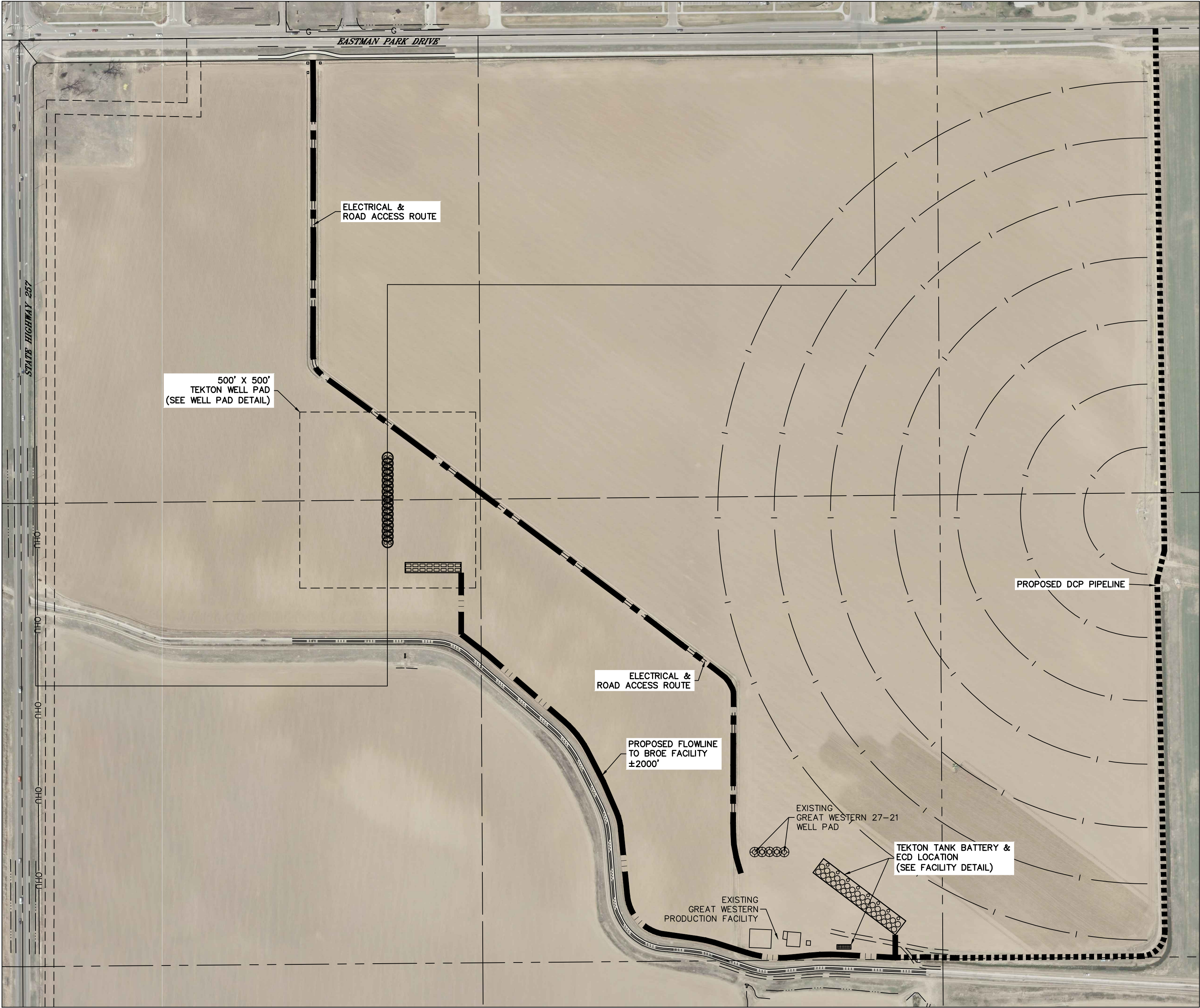
A PORTION OF THE NORTHWEST QUARTER (NW1/4) OF
SECTION 27, TOWNSHIP 6 NORTH, RANGE 67 WEST OF THE 6TH P.M.
(GREAT WESTERN 2ND ANNEXATION) TOWN OF WINDSOR,
COUNTY OF WELD, STATE OF COLORADO



WELL PAD DETAIL
SCALE: 1" = 60'



FACILITY DETAIL
SCALE: 1" = 60'



OPERATIONS MAP
SCALE: 1" = 200'



Lat40°, Inc.
Professional Land Surveyors
1635 Foxtrail Drive, Suite 325
Loveland, CO 80537
O: 970-776-3321

DATE: 12/11/12	FILE NAME: 2012167WELL.dwg	DRAWN BY: BTB	CHECKED BY: BTB	SCALE: AS NOTED	PROJECT #: 2012167
REVISIONS:	DATE:	BROE FACILITY DETAIL FOR TEKTON ENERGY, LLC 640 PLAZA DRIVE, SUITE 290 HIGHLANDS RANCH, CO 80129			
REVISE FLOWLINES	BTB 12/21/2012				
ADD OPERATIONS MAP	BTB 12/21/2012				
					1 SHEET 1 OF 1