

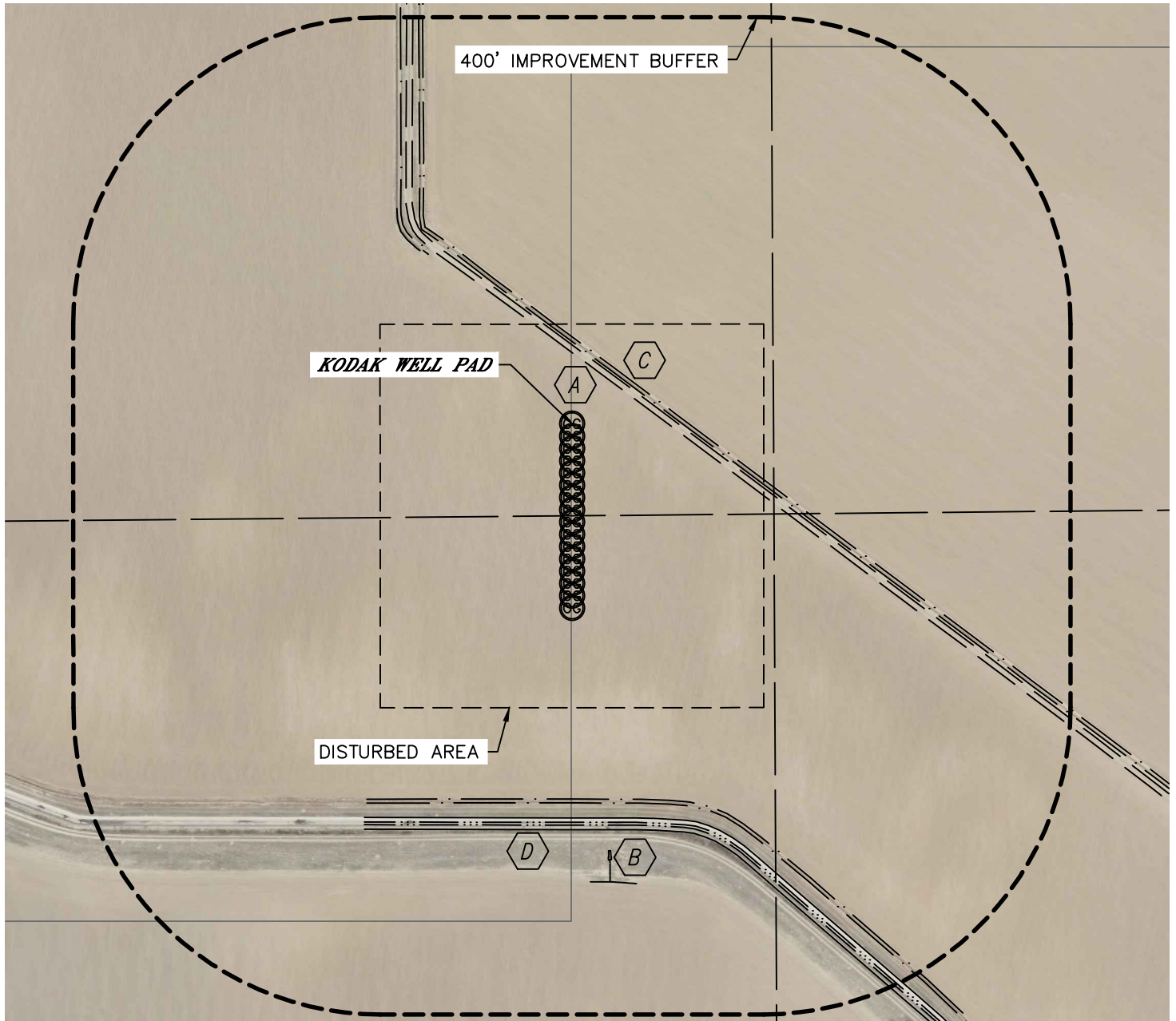


Lat40°, Inc. 1635 Foxtrail Drive, Suite 325 Loveland, CO 970-776-3321

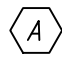
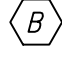
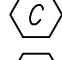

LOCATION DRAWING

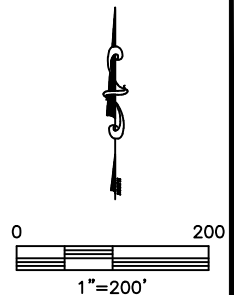
KODAK WELL PAD

SECTION: 27
TOWNSHIP: 6N
RANGE: 67W



IMPROVEMENTS:
(MEASURED FROM THE PROPOSED KODAK 1 WELL LOCATION)

-  ACCESS ROAD 75' NE
-  CONCRETE STRUCTURE 559' S
-  DITCH 86' NE, 297' NW, 490' S, 599' S
-  CANAL 514' S



NEAREST: BUILDING 1300' NW (DWELLING), PUBLIC ROAD 1023' W (HWY 257),
ABOVE GROUND UTILITY 997' W, RAILROAD 1111' W, PROPERTY LINE 1' W

DATE: 1/31/2013
PROJECT#: 2012167