



December 27, 2012

Colorado Oil & Gas Conservation Commission  
The Chancery Building  
1120 Lincoln Street, Suite 801  
Denver, CO 80203

RE: Mathews 4B-14H  
Township 1 North, Range 66 West, 6<sup>th</sup> P.M.  
Section 14: 472' FSL, 1990' FEL (Surface Location)  
Section 14: 460' FNL, 2175' FEL (Bottom Hole Location)  
Weld County, Colorado

To Whom It May Concern:

Encana Oil & Gas (USA) Inc. ("Encana") is planning to drill the captioned boundary well in accordance with the provisions of COGCC Rule 318A.e.

Encana's proposed wellbore spacing unit consists of T1N, R66W, Section 14: E/2, creating a 320 - acre wellbore spacing unit for the proposed formation(s).

Encana is not the only owner within the proposed spacing unit, and as such provided notice to the remaining owner(s) within said proposed spacing unit as required under COGCC Rule 318A.e(6). The required thirty (30) day notice period has elapsed absent the receipt by Encana of an objection to said proposal by the owner(s) within the proposed spacing unit for this well.

Enclosed is a copy of the map illustrating the proposed wellbore spacing unit to assist you in your review and approval of Encana's proposed APD for the captioned well.

Thank you for your time and attention to this matter. Encana respectfully requests that the COGCC review the enclosed information and approve the Application for Permit to Drill the captioned well.

A handwritten signature in black ink, appearing to read "Erin Hochstetler".

Erin Hochstetler  
Permitting Technician

**Encana Oil & Gas (USA) Inc.**  
Republic Plaza  
370 – 17 Street, Suite 1700  
Denver, Colorado  
United States 80202  
T 303.623.2300  
F 303.623.2400  
[www.encana.com](http://www.encana.com)

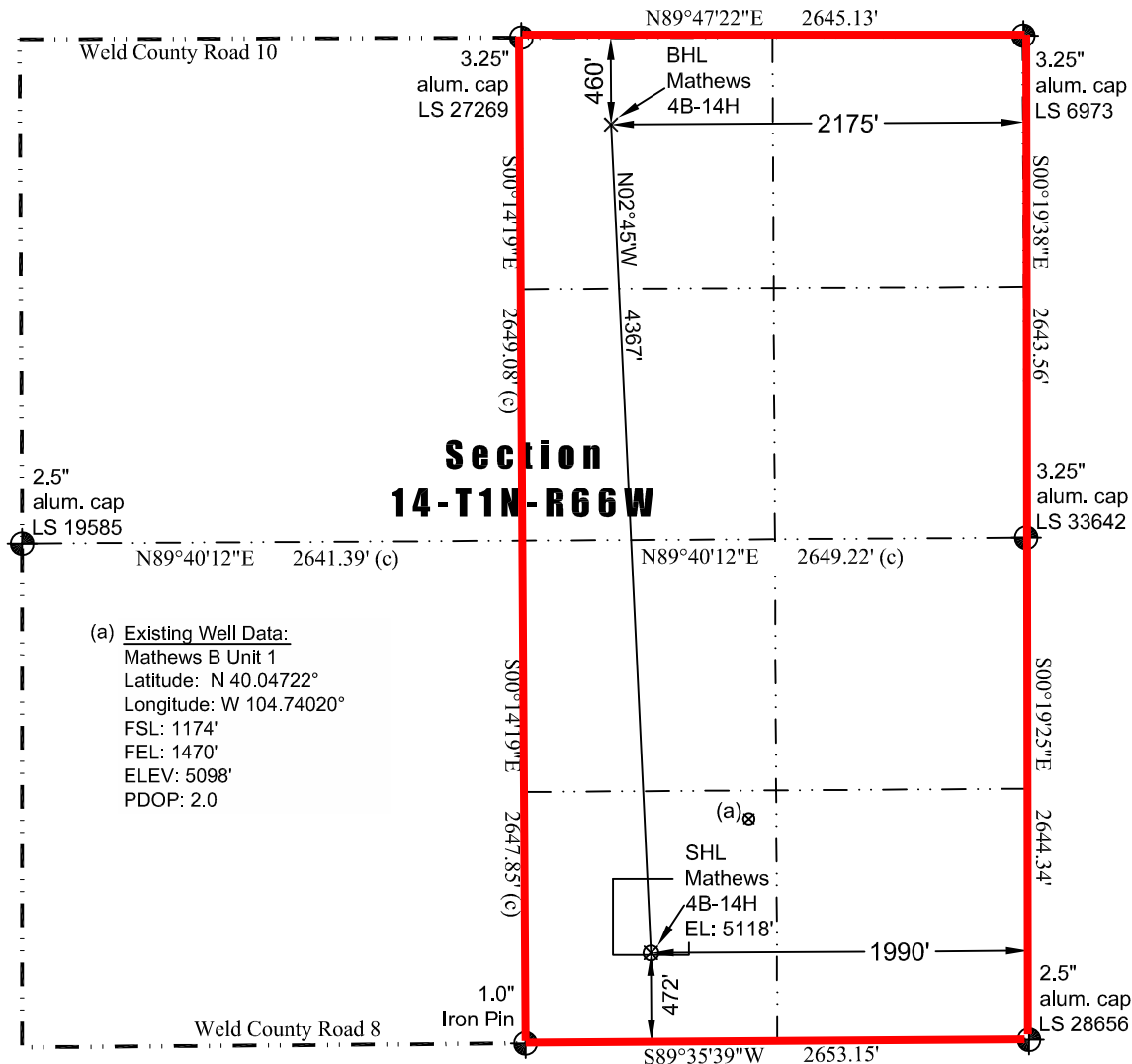
# Proposed Spacing Unit Map

JR Land Surveying, LLC

8114 Northstar Drive  
Windsor, Colorado 80528  
P. 970-576-4641

## WELL LOCATION CERTIFICATE

*THIS MAP DOES NOT REPRESENT A BOUNDARY SURVEY*



Scale 1" = 1000'  
1000  
approximate scale

**LEGEND**  
— found survey monument  
— calculated dimension  
(c)

(a) Existing Well Data:  
Mathews B Unit 1  
Latitude: N 40.04722°  
Longitude: W 104.74020°  
FSL: 1174'  
FEL: 1470'  
ELEV: 5098'  
PDOP: 2.0

In accordance with a request from Jay Knutson of EnCana Oil & Gas (USA) Inc., JR Land Surveying, LLC has determined the location of the **Mathews 4B-14H** well site to be SHL: 472' FSL and 1990' FEL, (BHL: 460' FNL and 2175' FEL) as measured at ninety (90) degrees from the section lines of Section 14, Township 1 North, Range 66 West, 6th Principal Meridian, County of Weld, CO.

### Proposed Surface Hole Data:

Latitude: N 40.04529° (BHL: 40.05727°)  
Longitude: W 104.74206° (BHL: 104.74268°)  
PDOP: 1.4

### Nearest:

Building: 584' southeast  
Public Road: 461' south  
Property Line: 472' south  
Existing Well: Mathews B Unit 1, 875' northeast  
Above Ground Utility: 443' south  
Railroad: 16,450' southeast  
Well Window: SHL is 10' inside

### Notes:

- 1) Bearings and distances based on NAD 83 Colorado North State Plane Coordinates using RTK GPS observations taken 12/6/12 by operator John Rice.
- 2) Conversion factor to ground (1.000279646).
- 3) Elevations based on NAVD 88 GPS heights and Geoid 2003 corrections.
- 4) See Location Drawing for visible improvements within 400 of pad site.
- 5) The surface use is a uncultivated field.

**NOTICE:** According to Colorado law you MUST commence any legal action based upon any defect in this W.L.C. within three years after you first discover such defect. In no event may any action based upon any defect in this W.L.C. be commenced more than ten years from this said date of the certification shown hereon.

I hereby certify that this Well Location Certificate was prepared by me or under my direct supervision on 12/28/2012 for and on behalf of EnCana Oil & Gas (USA) Inc. That it is not a Land Survey Plat or an Improvement Survey Plat and that it is not to be relied upon for establishment of fences, buildings, or other future improvement lines.

John Robert McGehee LS#38219  
Well: Mathews 4B-14H WLC

